

- 1 FRONT - A

2 FRONT INTERFACING - A

3 WELT - A,B

4 SIDE FRONT - A

5 BACK - A

6 SIDE BACK - A

7 BACK FACING - A

8 FRONT LINING - A

9 BACK LINING - A

10 BUTTONHOLE GUIDE - A

11 FRONT - B

12 FRONT INTERFACING - B

13 SIDE FRONT - B

14 POCKET - B

15 FLAP - B

16 BACK - B

17 SIDE BACK - B

18 FRONT LINING - B

19 FRONT WAISTBAND - B

20 BACK WAISTBAND - B
- 1 DEVANT – A

2 ENTOILAGE DEVANT – A

3 BORDURE - A, B

4 CÔTÉ DEVANT – A

5 DOS – A

6 CÔTÉ DOS – A

7 PAREMENTURE DOS – A

8 DOUBLURE DEVANT – A

9 DOUBLURE DOS – A

10 GUIDE POUR BOUTONNIÈRE – A

11 DEVANT – B

12 ENTOILAGE DEVANT – B

13 CÔTÉ DEVANT – B

14 POCHE – B

15 RABAT – B

16 DOS – B

17 CÔTÉ DOS – B

18 DOUBLURE DEVANT – B

19 CEINTURE DEVANT – B

20 CEINTURE DOS – B

BODY MEASUREMENTS / MESURES DU CORPS

MISSSES/JEUNE FEMME											
Sizes/Tailles	6	8	10	12	14	16	18	20	22	24	
Bust (ins)	30½	31½	32½	34	36	38	40	42	44	46	
Waist	23	24	25	26½	28	30	32	34	37	39	
Hip	32½	33½	34½	36	38	40	42	44	46	48	
Bk. Wst Lgth.	15½	15¾	16	16¼	16½	16¾	17	17¼	17½	17¾	
T. poitrine (cm)	78	80	83	87	92	97	102	107	112	117	
T. taille	58	61	64	67	71	76	81	87	94	97	
T. hanches	83	85	88	92	97	102	107	112	117	122	
Nuque à taille	39.5	40	40.5	41.5	42	42.5	43	44	44	45	

FABRIC CUTTING LAYOUTS



Indicates Bustline, Waistline, Hipline and/or Biceps. Measurements refer to circumference of Finished Garment (Body Measurement + Wearing Ease + Design Ease). Adjust Pattern if necessary.

Lines shown are CUTTING LINES, however, 5/8" (1.5cm) SEAM ALLOWANCES ARE INCLUDED, unless otherwise indicated. See SEWING INFORMATION for seam allowance.

Find layout(s) by Garment/View, Fabric Width and Size. Layouts show approximate position of pattern pieces; position may vary slightly according to your pattern size.

All layouts are for with or without nap unless specified. For fabrics with nap, pile, shading or one-way design, use WITH NAP layout.

RIGHT SIDE OF PATTERN	WRONG SIDE OF PATTERN	RIGHT SIDE OF FABRIC	WRONG SIDE OF FABRIC
-----------------------	-----------------------	----------------------	----------------------

S/T = SIZE(S)/TAILLE(S)  
\* = WITH NAP/AVEC SENS  
S/L = SELVAGE(S)/LISIÈRE(S)  
AS/TT = ALL SIZE(S)/TOUTES TAILLE(S)  
\*\* = WITHOUT NAP/SANS SENS  
F/P = FOLD/PLIURE  
CF/PT = CROSSWISE FOLD/PLIURE TRAME

Position fabric as indicated on layout. If layout shows...

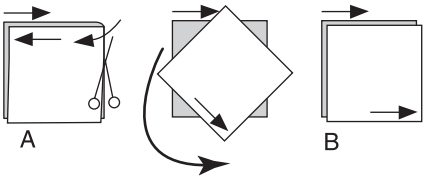
**GRAINLINE**—Place on straight grain of fabric, keeping line parallel to selvage or fold. ON “with nap” layout arrows should point in the same directions. (On Fur Pile fabrics, arrows point in direction of pile.)

**SINGLE THICKNESS**—Place fabric right side up. (For Fur Pile fabrics, place pile side down.)

DOUBLE THICKNESS

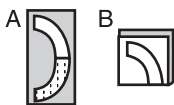
WITH FOLD—Fold fabric right sides together.

✱ WITHOUT FOLD—With right sides together, fold fabric CROSSWISE. Cut fold from selvage to selvage (A). Keeping right sides together, turn upper layer completely around so nap runs in the same direction as lower layer.



**FOLD**—Place edge indicated exactly along fold of fabric. NEVER cut on this line.

When pattern piece is shown like this...



- Cut other pieces first, allowing enough fabric to cut this piece (A). Fold fabric and cut piece on fold, as shown (B).

✱ Cut piece only once. Cut other pieces first, allowing enough fabric to cut this piece. Open fabric; cut piece on single layer.

Cut out all pieces along cutting line indicated for desired size using long, even scissor strokes, cutting notches outward.

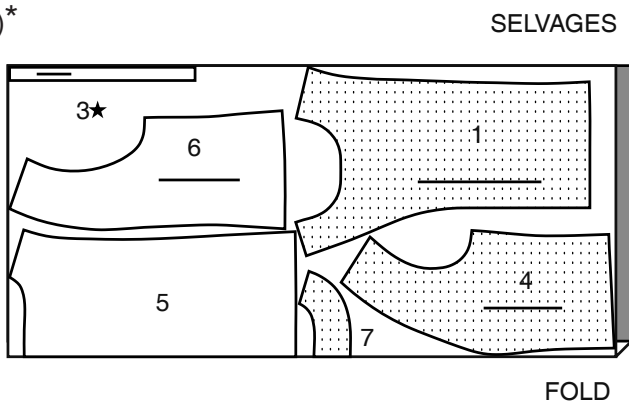
Transfer all markings and lines of construction before removing pattern tissue. (Fur Pile fabrics, transfer markings to wrong side.)

**NOTE:** Broken-line boxes ( a! b! c! ) in layouts represent pieces cut by measurements provided.

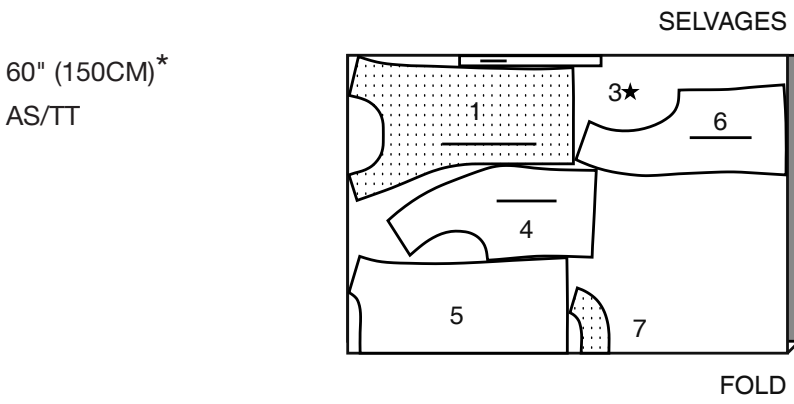
TOP A / HAUT A

PIECES 1 3 4 5 6 7

45" (115CM)\*  
AS/TT



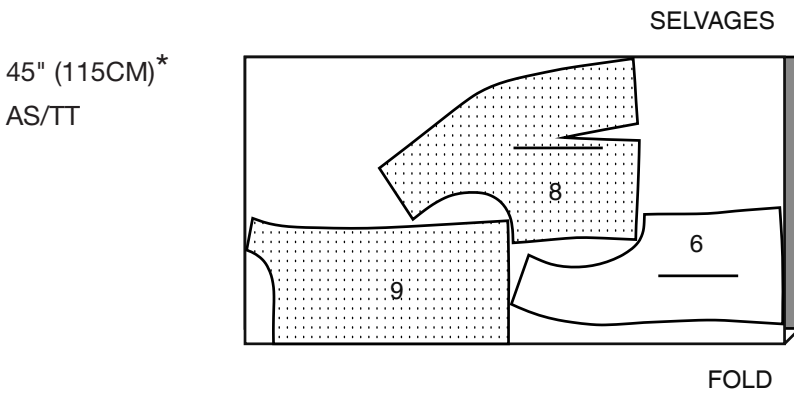
60" (150CM)\*  
AS/TT



LINING A / DOUBLURE A

PIECES 6 8 9

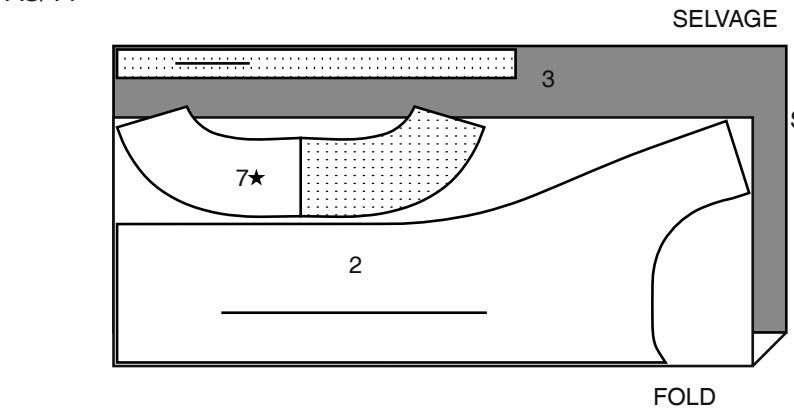
45" (115CM)\*  
AS/TT



INTERFACING A / ENTOILAGE A

PIECES 2 3 7

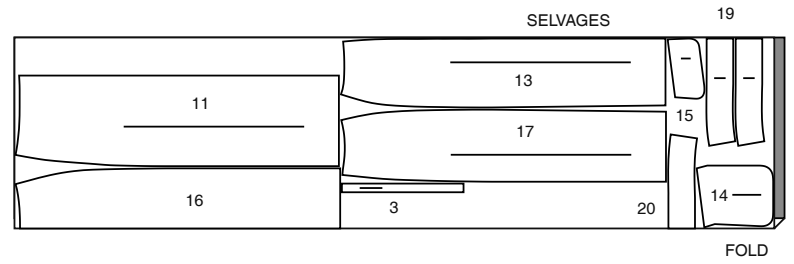
20" (51CM)  
AS/TT



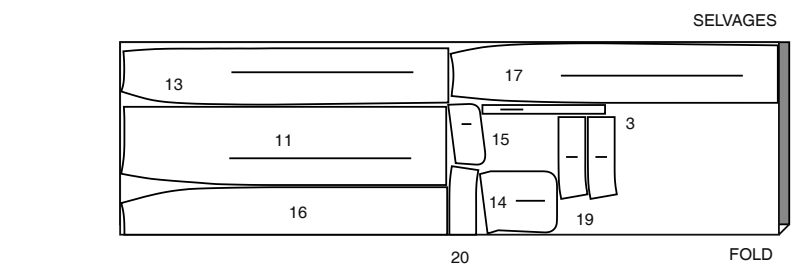
SKIRT B / JUPE B

PIECES 3 11 13 14 15 16 17 19 20

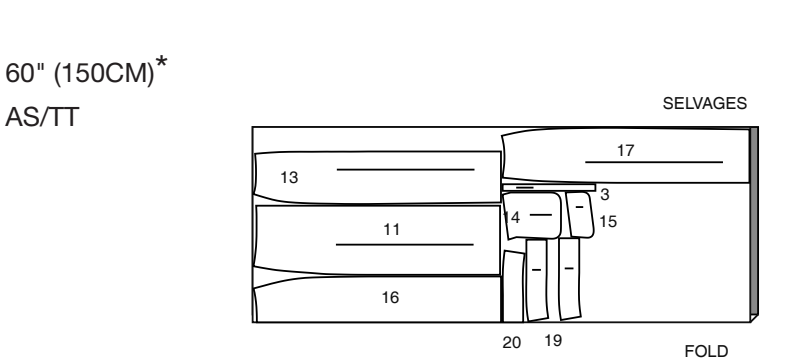
45" (115CM)\*  
S/T 6 8 10 12 14



45" (115CM)\*  
S/T 16 18 20 22 24



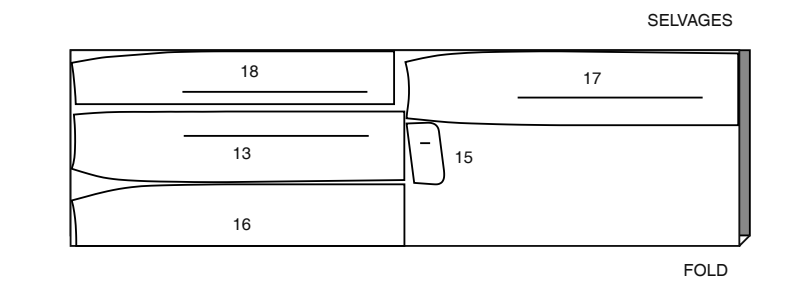
60" (150CM)\*  
AS/TT



LINING B / DOUBLURE B

PIECES 13 15 16 17 18

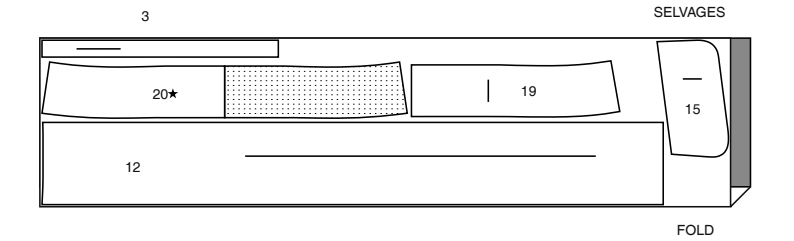
45" (115CM)\*  
AS/TT



INTERFACING B / ENTOILAGE B

PIECES 3 12 15 19 20

20" (51CM)  
AS/TT



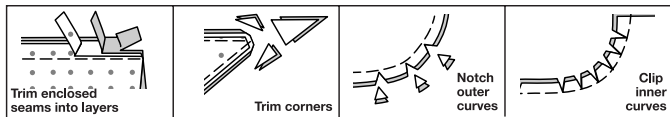
SEWING INFORMATION

**5/8" (1.5cm) SEAM ALLOWANCES ARE INCLUDED,**  
(unless otherwise indicated)

ILLUSTRATION SHADING KEY

Right Side	Wrong Side	Interfacing	Lining	Underlining
------------	------------	-------------	--------	-------------

Press as you sew. Press seams flat, then press open, unless otherwise instructed. Clip seam allowances, where necessary, so they lay flat.



## GLOSSARY

Sewing methods in **BOLD TYPE** have Sewing Tutorial Video available. Scan QR CODE to watch videos:

**CATCH STITCH** – See **Hand Stitching**: “hand sewing a catch stitch” video.

**EASE** – See **Gathering**: “sewing two row gathers” video.

**NARROW HEM** – See **Hems**: “sewing narrow hems” video.

**SLIPSTITCH** – See **Hand Stitching**: “how to slip stitch” video.

**STAYSTITCH** – See **Machine Stitches**: “how to do stay stitching” video.

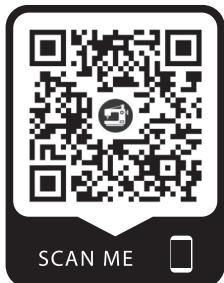
**STITCH IN THE DITCH** – See **Machine Stitches**: “how to stitch in the ditch” video.

**TOPSTITCH** – See **Machine Stitches**: “how to topstitch” video.

**TRIM SEAM** – See **Seams**: “how to trim, clip and layer seams” video.

**UNDERSTITCH** – See **Machine Stitches**: “how to understitch” video.

SEWING TUTORIALS



Build your skills viewing short, easy-to-follow videos at [simplicity.com/sewingtutorials](https://www.simplicity.com/sewingtutorials)

**PATTERN PIECES WILL BE IDENTIFIED BY NUMBERS THE FIRST TIME THEY ARE USED.**

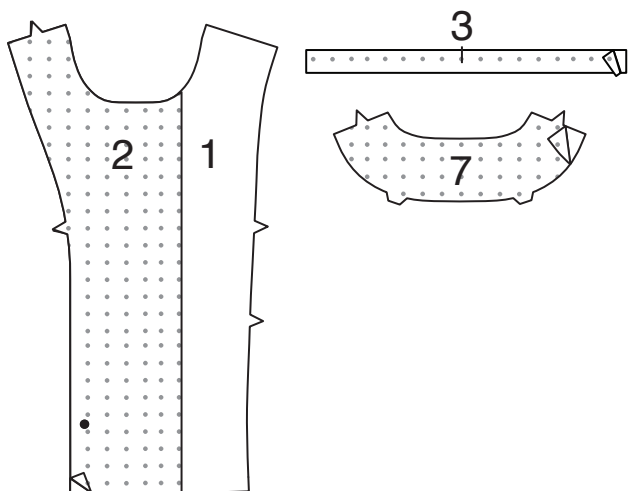
**STITCH 5/8" (1.5CM) SEAMS WITH RIGHT SIDES TOGETHER UNLESS OTHERWISE STATED.**

## TOP A

**NOTE:** Trim 1" (2.5cm) from lower edge of **SIDE BACK (6)** **LINING** sections, before stitching seams.

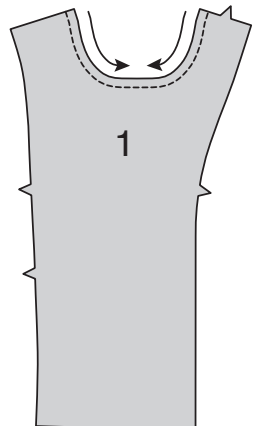
## INTERFACING

**1.** Pin **FRONT INTERFACING (2)** to **WRONG** side of **FRONT (1)** along single notched edge, and pin interfacing sections to **WRONG** side of **WELT (3)** and **BACK FACING (7)**. Fuse in place following manufacturer's directions.

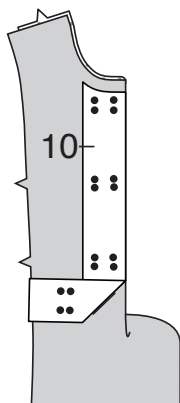


## FRONT

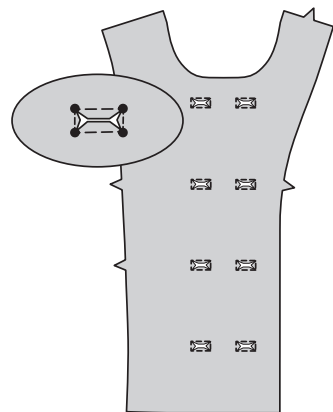
**2.** To **STAYSTITCH** neck edge of **FRONT (1)**, stitch 1/2" (1.3cm) from cut edge in direction of arrows. This stitching stays in permanently to prevent stretching on curved edges. (Shown only in the first illustration.)



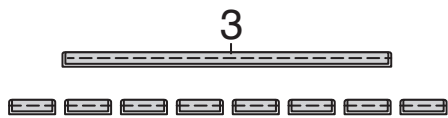
**3.** Fold front along the foldline with **WRONG** sides together forming facing. Press. On **OUTSIDE**, pin **BUTTONHOLE GUIDE (10)** to front along pressed edge, between the neck seamline and hem allowance marking, matching centers. Transfer markings to both layers.



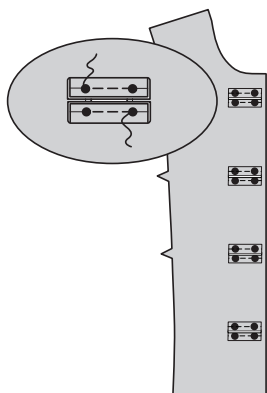
**4.** Open out the facing. Stitch along stitching lines on front, pivoting with needle in fabric at small dots. Slash along slash lines, being careful not to slash through stitching. Stitch along stitching lines and slash facing in the same manner.



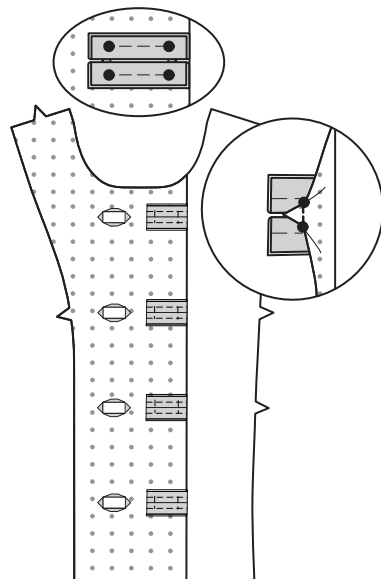
**5.** Fold **WELT (3)** in half, lengthwise, with **WRONG** sides together. Press. Baste lengthwise, 1/4" (6mm) from raw edge. Cut welt into eight sections along solid lines.



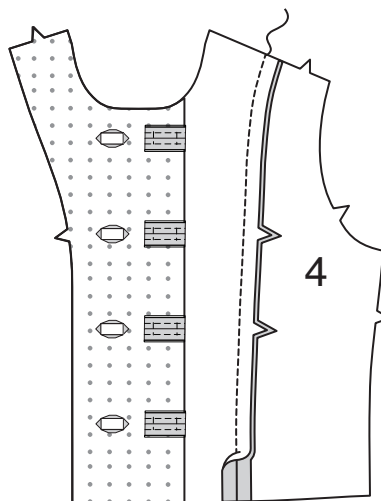
**6.** On **OUTSIDE**, pin two welts to front over each buttonhole, placing basting along stitching lines, matching small dots. Stitch along stitching lines on long edges of openings between the small dots.



**7.** Turn seam allowances to **INSIDE**; press, pressing welts out. On **INSIDE**, stitch welt ends to triangular seam allowances between remaining small dots, as shown. Press under raw edges of buttonholes on facing along stitching lines.

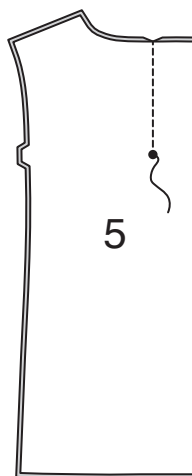


**8.** With **RIGHT** sides together and raw edges even, pin front to **SIDE FRONT (4)** along side front edges, matching notches. Stitch. Press seam open.

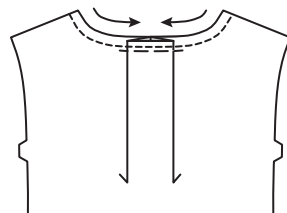


## BACK

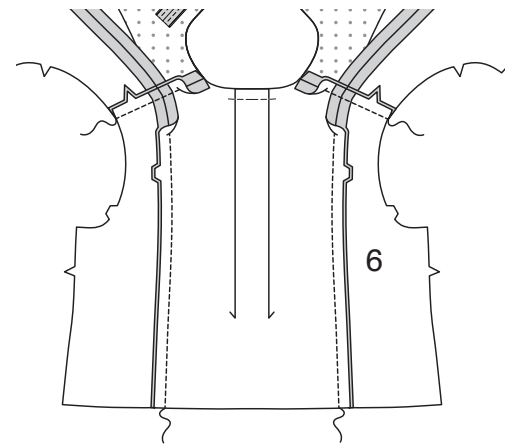
**9.** To make a pleat in **BACK (5)**, fold back along center with **RIGHT** sides together, matching broken lines and small dots. Stitch along broken line from neck edge to small dot, back-stitching at dot to reinforce the seam.



**10.** Press pleat flat along solid lines, bringing stitching to center. Baste. **STAYSTITCH** neck edge by stitching 1/2" (1.3cm) from cut edge in direction of arrows. This stitching stays in permanently to prevent stretching on curved edges. (Shown only in the first illustration.)

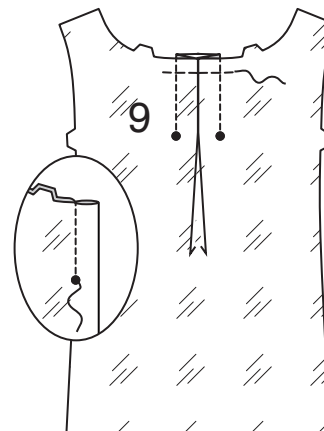


**11.** Pin back to **SIDE BACK (6)** along side back edges, matching notches. Stitch. Stitch front to back at shoulder edges. Press seams open.

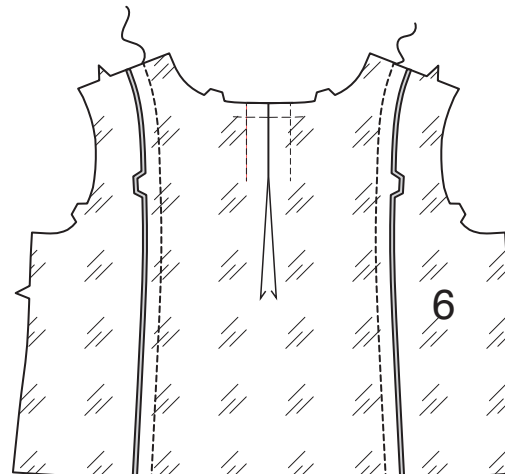


## LINING

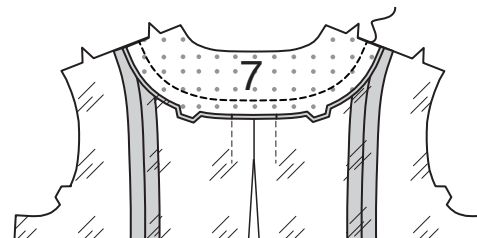
**12.** To make two pleats in **BACK LINING (9)**, on **INSIDE**, bring broken lines and small dots together. Stitch along broken lines from neck edge to small dots, back-stitching at dots to reinforce the seam. Press pleats toward center, and solid lines to broken lines. Baste across raw edge at neckline.



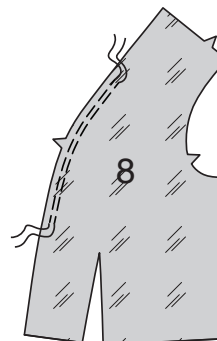
**13.** Pin back lining to **SIDE BACK (6)** lining along side back edges, matching notches. Stitch. Press seams open.



**14.** With **RIGHT** sides together and raw edges even, pin upper edge of back lining to lower edge of **BACK FACING (7)**, matching centers and notches. Stitch. Press seam toward lining.

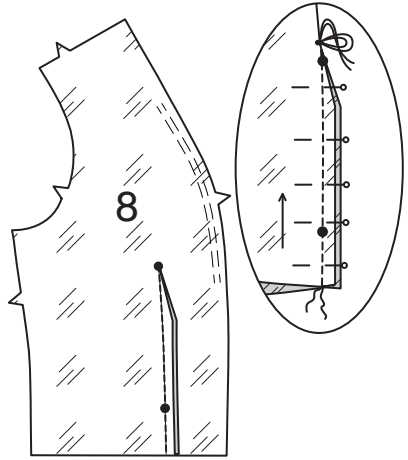


**15.** To **EASE FRONT LINING (8)** for 4" (10cm) each side of the side front notch, loosen needle tension slightly. On **OUTSIDE**, stitch 5/8" (1.5cm) from cut edge using a long stitch. Stitch again 1/4" (6mm) from first stitching within the seam allowance.

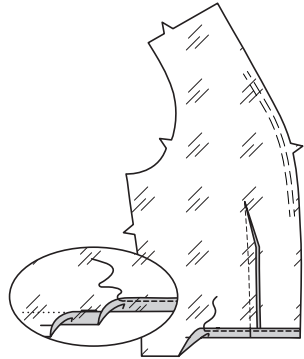




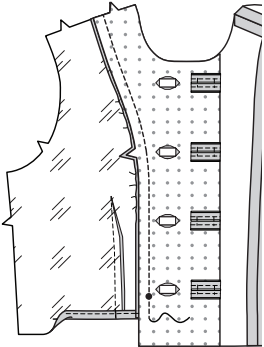
**16.** To stitch dart seam, with **RIGHT** sides together, bring broken lines together carefully matching small dots. On **INSIDE**, place pins at **RIGHT** angles to the broken lines. Stitch the dart seam from outer edge to the point. Press the dart seam flat along the stitching to “blend” the stitches, then press dart toward front.  
**TIP** – To prevent a “bubble” at the point, make the last few stitches right on the fold and leave the thread ends long enough to tie a knot. **DO NOT** back-stitch at the point.



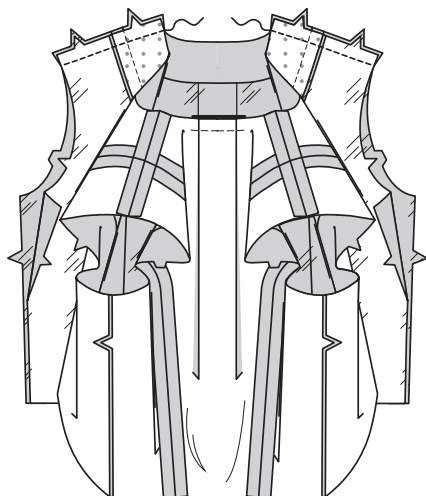
**17.** Press up 1” (2.5cm) on lower edge of lining. To form **NARROW HEM**, tuck under raw edge to meet crease. Press. Stitch hem in place from side front edge to 2” (5cm) from side edge.



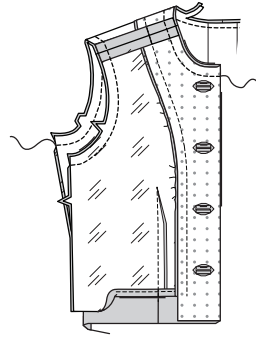
**18.** With **RIGHT** sides together and raw edges even, pin front lining to front facing extension, matching small dots and notches, pulling up ease stitches to make the curve. Stitch. Press seam toward lining.



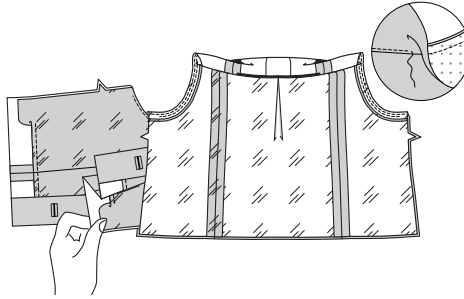
**19.** With **RIGHT** sides together and raw edges even, pin front facing/lining to back facing/lining at shoulder edges. Stitch. Press seams open.



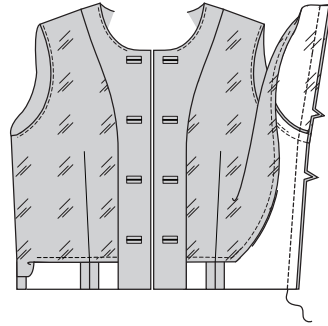
**20.** Turn front facing to **OUTSIDE** along foldline. Pin facing/lining to top along neck edge. Stitch. Pin lining to top at armhole edges. Stitch. **TRIM SEAMS.**



**21. UNDERSTITCH** the lining/facing as far as possible. Turn top **RIGHT** side out by pulling each front through shoulder and out through one of the side opening edges, as shown; press.

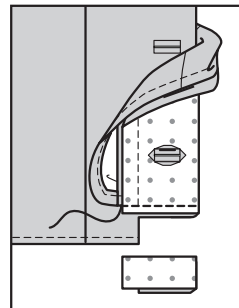


**22.** Open out lining at side edges. With **RIGHT** sides together and raw edges even, pin top and lining at side seams, matching armhole seams and notches. In one continuous seam, stitch top and lining side seam. Press seams open.

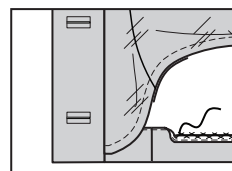


## FINISHING

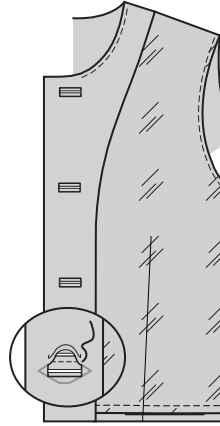
**23.** Finish **NARROW HEM** on lining, connecting to previous stitching. Finish lower edge of top by stitching 1/4” (6mm) from raw edge. Turn facing to **OUTSIDE** at lower edge of garment. Stitch across facing 1-1/2” (3.8cm) from lower edge. Trim facing close to stitching. Trim top to within 5/8” (1.5cm) of inner edge of facing.



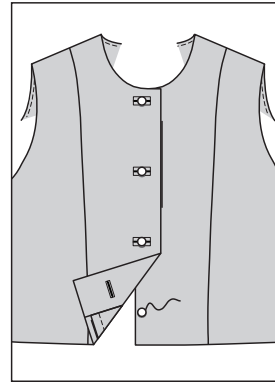
**24.** Turn facing to **INSIDE**; press, pressing up hem along hemline. **CATCH STITCH** hem in place, invisibly.



**25.** Pin pressed buttonhole edges of facing along welt seams. **SLIPSTITCH** in place, invisibly.



**26.** Lap **RIGHT** front over **LEFT** front, matching centers. Sew buttons to **LEFT** front under buttonholes.

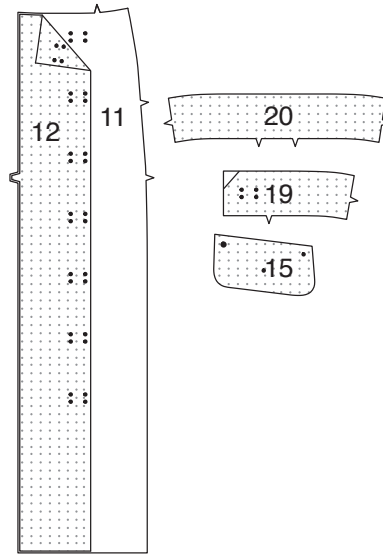


## SKIRT B

**NOTE:** Trim 1” (2.5cm) from lower edge of **SIDE FRONT** (13), **BACK** (16), and **SIDE BACK** (17) **LINING** sections, before stitching seams.

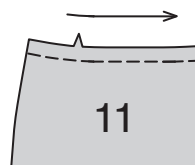
## INTERFACING

**1.** Pin **FRONT INTERFACING** (12) to **WRONG** side of **FRONT** (11) along double notched edge, and pin interfacing sections to **WRONG** side of **FLAP** (15), **FRONT WAISTBAND** (19), and **BACK WAISTBAND** (20) sections. Fuse in place following manufacturer’s directions.

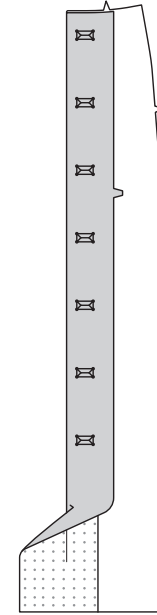


## FRONT

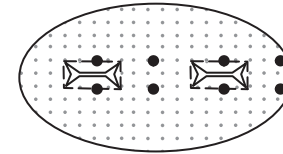
**2.** To **STAYSTITCH** upper edge of **FRONT** (11), stitch 1/2” (1.3cm) from cut edge in direction of arrows. This stitching stays in permanently to prevent stretching on curved edges. (Shown only in the first illustration.)



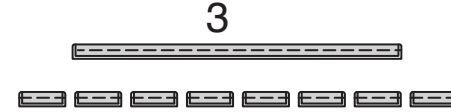
**3.** Fold front along the foldline with **WRONG** sides together forming facing. Press. Transfer buttonhole markings to facing.



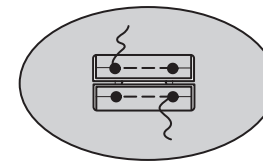
**4.** Open out the facing. Stitch along stitching lines on front, pivoting with needle in fabric at small dots. Slash along slash lines, being careful not to slash through stitching. Stitch along stitching lines and slash facing in the same manner.



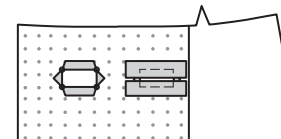
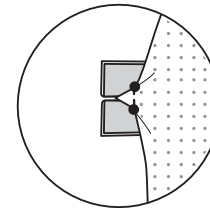
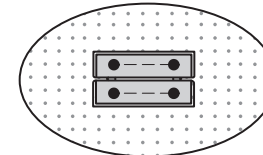
**5.** Fold two **WELT** (3) sections in half, lengthwise, with **WRONG** sides together. Press. Baste lengthwise, 1/4” (6mm) from raw edge. Cut welt into sixteen sections along solid lines.



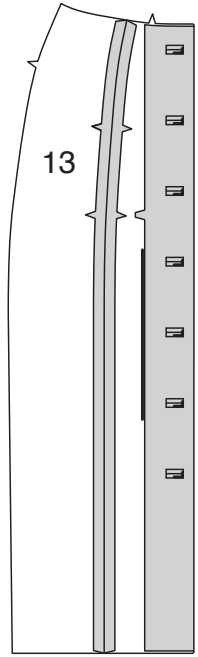
**6.** On **OUTSIDE**, pin two welts to front over each buttonhole, placing basting along stitching lines, matching small dots. Stitch along stitching lines on long edges of openings between the small dots. (Remaining two welts will be stitched to **RIGHT** front waistband.)



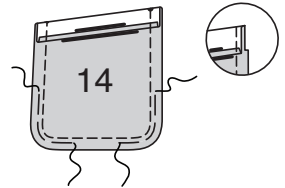
**7.** Turn seam allowances to **INSIDE**; press, pressing welts out. On **INSIDE**, stitch welt ends to triangular seam allowances between remaining small dots, as shown. Press under raw edges of buttonholes on facing along stitching lines.



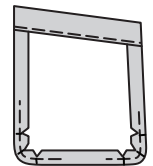
**8.** With **RIGHT** sides together and raw edges even, pin front to **SIDE FRONT** (13) along side front edges, matching notches. Stitch. Press seam open.



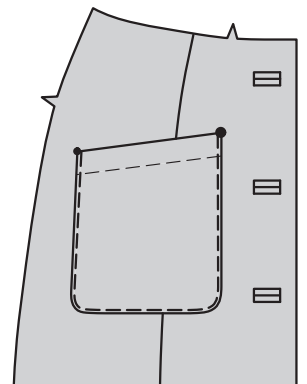
**9.** Press under 1/4” (6mm) on upper edge of **POCKET** (14). Turn upper edge to **OUTSIDE** along fold line, forming facing. Stitch along seam line on raw edges. To ease curved edge of pocket, stitch 1/4” (6mm) **INSIDE** the seam line, using a long machine-stitch. Trim seam allowance in the facing area to 1/4” (6mm).



**10.** Turn corners **RIGHT** side out, turning facing to the **WRONG** side; press, pressing under raw edges along stitching. Pull up ease stitches to shape the curve. To eliminate bulk, notch out the fullness in the seam allowance along the curves as far as the ease stitches. Stitch facing close to inner edge.



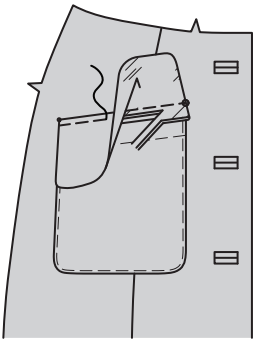
**11.** On **OUTSIDE**, pin pocket to front along pocket line, matching small and large dots. Stitch close to side and lower edges.



**12.** With **RIGHT** sides together, stitch lining to **FLAP** (15), leaving edge with small dots open. **TRIM SEAM.**

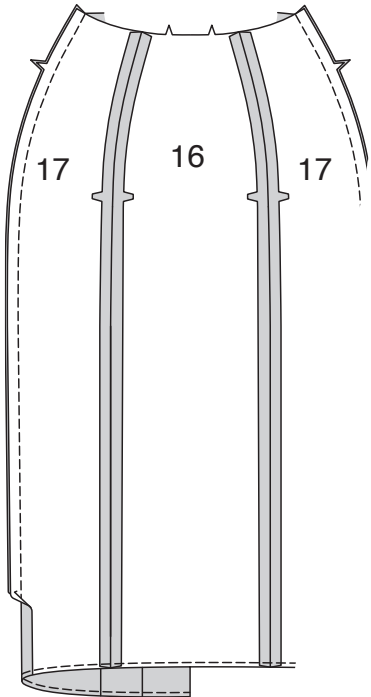


**13.** Turn flap; press. Machine-baste 5/8" (1.5cm) from raw edge. On OUTSIDE, pin flap to front, placing basting along flap line, matching small and large dots, as shown. Stitch along basting. Trim close to stitching. Turn flap down; press.  
**TOPSTITCH** flap 1/4" (6mm) from upper edge.



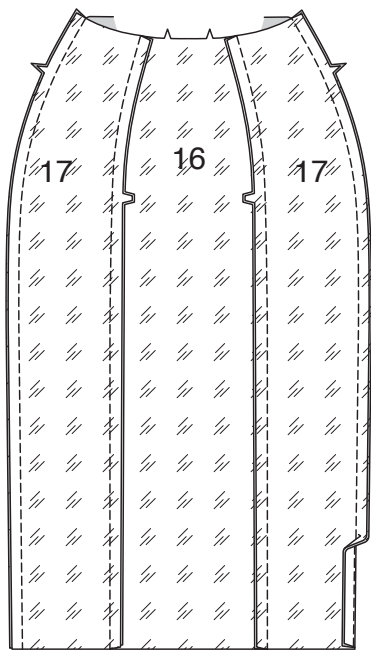
### BACK

**14.** With RIGHT sides together and raw edges even, pin BACK (16) to SIDE BACK (17), matching notches. Stitch. Press seam open. Stitch front to back at side edges, matching notches. Finish lower edge of skirt by stitching 1/4" (6mm) from raw edge.

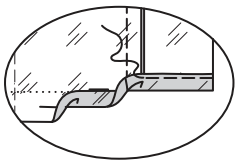
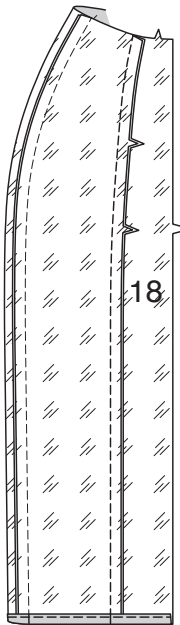


### LINING

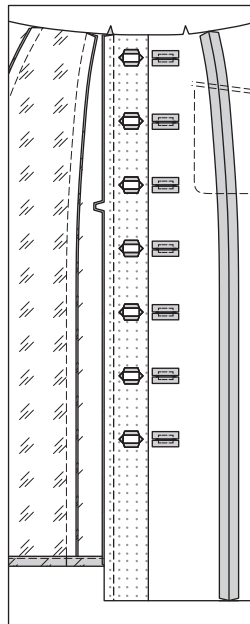
**15.** Stitch back, side back, and side front lining sections together in the same manner as for skirt. Press seams toward back.



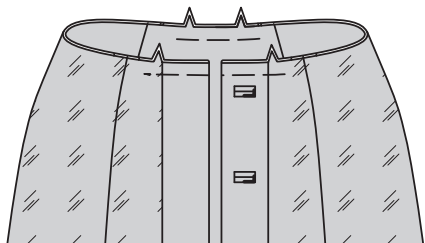
**16.** Stitch FRONT LINING (18) to side front lining, matching notches. Stitch. Press seams toward front. Press up 1-3/8" (3.5cm) on lower edge of lining. To form **NARROW HEM**, tuck under raw edge 5/8" (1.5cm). Press. Stitch hem in place.



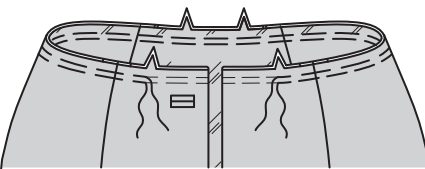
**17.** With RIGHT sides together and raw edges even, pin front lining to front facing extension, matching notches. Stitch. Press seam toward lining.



**18.** Turn front facing to INSIDE along foldline. Pin facing/lining to skirt along upper edge with WRONG sides together, matching seams and notches. Baste across upper front edge to notch and between the back notches.

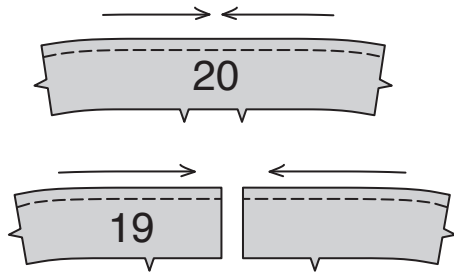


**19.** To **EASE** upper edge of skirt between the front and back notches, loosen needle tension slightly. On OUTSIDE, stitch 5/8" (1.5cm) from cut edge using a long stitch. Stitch again 1/4" (6mm) from the first stitching within the seam allowance.

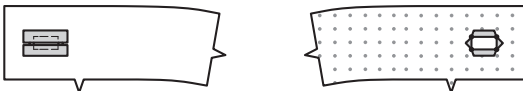


### WAISTBAND

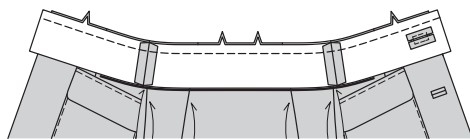
**20.** To **STAYSTITCH** FRONT WAISTBAND (19) and BACK WAISTBAND (20) sections, stitch 1/2" (1.3cm) from cut edge in direction of arrows. This stitching stays in permanently to prevent stretching on curved edges. (Shown only in the first illustration.)



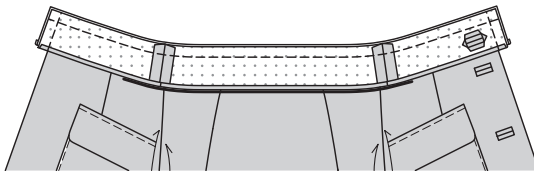
**21.** Apply remaining welts to RIGHT front waistband, and press under slashed edges to stitching on RIGHT front waistband facing in the same manner as for skirt.



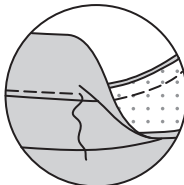
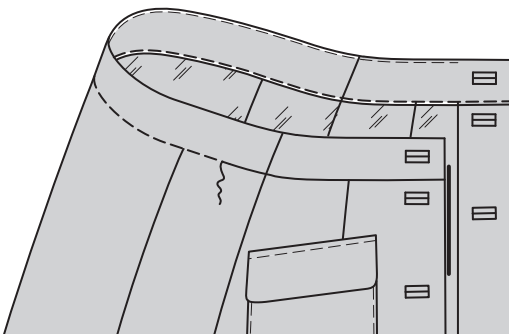
**22.** Stitch front waistband sections to back waistband at side edges. With RIGHT sides together and raw edges even, pin upper edge of skirt to lower edge of waistband, matching centers, seams, and notches, pulling up ease stitches to fit. (Waistband extends 5/8" (1.5cm) beyond front edges of skirt.) Stitch. **TRIM SEAM.** Press seam toward waistband, pressing waistband out.



**23.** Stitch ends of waistband facing. Press under notched edge 1/2" (1.3cm). Trim to 1/4" (6mm). With RIGHT sides together and raw edges even, pin facing to waistband, matching centers and seams. Stitch upper edge and ends. **TRIM SEAM.**

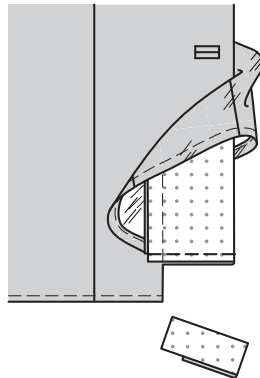


**24.** **UNDERSTITCH** the facing. Turn facing to INSIDE; press. On INSIDE, pin pressed edge of facing over seam, placing pins on OUTSIDE. On OUTSIDE, **STITCH IN THE DITCH** of the seam, catching in pressed edge of facing on the INSIDE.

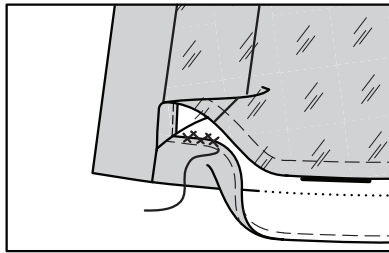


### FINISHING

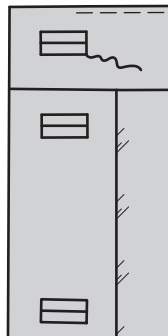
**25.** Turn facing to OUTSIDE at lower edge of garment. Stitch across facing 2" (5cm) from lower edge. Trim facing close to stitching. Trim skirt to within 5/8" (1.5cm) of inner edge of facing.



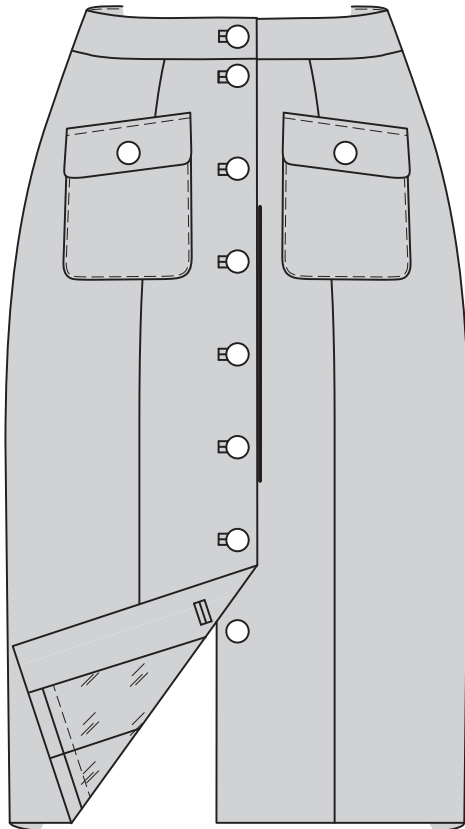
**26.** Turn facing to INSIDE; press, pressing up hem along hemline. **CATCH STITCH** hem in place, invisibly.



**27.** Pin pressed buttonhole edges of facing along welt seams. **SLIPSTITCH** in place, invisibly.



**28.** Lap RIGHT front over LEFT front, matching centers. Sew buttons to LEFT front under buttonholes. Sew buttons to flaps at small dots.



### FRANÇAIS

### PLANS DE COUPE



Indique: pointe de poitrine, ligne de taille, de hanches et/ou avantbras. Ces mesures sont basées sur la circonférence du vêtement fini. (Mesures du corps + Aisance confort + Aisance mode) Ajuster le patron si nécessaire.

Les lignes épaisses sont les LIGNES DE COUPE, cependant, des rentrés de 1.5cm sont compris, sauf si indiqué différemment. Voir EXPLICATIONS DE COUTURE pour largeur spécifiée des rentrés.

Choisir le(s) plan(s) de coupe selon modèle/largeur du tissu/taille. Les plans de coupe indiquent la position approximative des pièces et peut légèrement varier selon la taille du patron.

Les plans de coupe sont établis pour tissu avec/sans sens. Pour tissu avec sens, pelucheux ou certains imprimés, utiliser un plan de coupe AVEC SENS.

ENDROIT DU PATRON	ENVERS DU PATRON	ENDROIT DU TISSU	ENVERS DU TISSU

**S/T** = SIZE(S)/TAILLE(S)  
**\*** = WITH NAP/AVEC SENS  
**S/L** = SELVAGE(S)/LISIÈRE(S)  
**AS/TT** = ALL SIZE(S)/TOUTES TAILLE(S)  
**\*\*** = WITHOUT NAP/SANS SENS  
**F/P** = FOLD/PLIURE  
**CF/PT** = CROSSWISE FOLD/PLIURE TRAME

Disposer le tissu selon le plan de coupe. Si ce dernier indique...

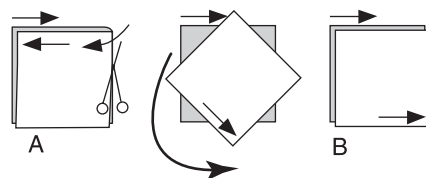
**DROIT FIL**—A placer sur le droit fil du tissu, parallèlement aux lisières ou au pli. Pour plan "avec sans," les flèches seront dirigées dans la même direction. (Pour fausse fourrure, placer la pointe de la flèche dans le sens descendant des poils.)

**SIMPLE EPAISSEUR**—Placer l'endroit sur le dessus. (Pour fausse fourrure, placer le tissu l'endroit dessous.)

**DOUBLE EPAISSEUR**

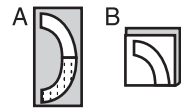
**AVEC PLIURE**—Placer endroit contre endroit.

**\* SANS PLIURE**—Plier le tissu en deux sur la TRAME, endroit contre endroit. Couper à la pliure, de lisière à lisière (A). Placer les 2 épaisseurs dans le même sens du tissu, endroit contre endroit (B).



**PLIURE**—Placer la ligne du patron exactement sur la pliure NE JAMAIS COUPER sur cette ligne.

Si la pièce se présente ainsi...  
 • Couper d'abord les autres pièces, réservant du tissu (A). Plier le tissu et couper la pièce sur la pliure, comme illustré (B).



★ Couper d'abord les autres pièces, réservant pour la pièce en question. Déplier le tissu et couper la pièce sur une seule épaisseur.

Couper régulièrement les pièces le long de la ligne de coupe indiquée pour la taille choisie, coupant les crans vers l'extérieur.

Marquer repères et lignes avant de retirer le patron. (Pour fausse fourrure, marquer sur l'envers du tissu.)





**3.** Plier le devant sur la ligne de pliure ENVERS CONTRE ENVERS en formant la parementure. Presser.  
Reporter les marques de la boutonnière sur la parementure.

**4.** Déplier la parementure.  
Piquer le long des lignes de piqûre sur le devant, en pivotant avec l'aiguille piquée dans le tissu sur les petits cercles. Couper sur les lignes de coupe, en veillant à ne pas couper à travers la piqûre. Piquer sur les lignes de piqûre et faire une coupe sur la parementure de la même façon.

**5.** Plier deux pièces de la BORDURE (3) en deux dans le sens de la longueur, ENVERS CONTRE ENVERS. Presser. Bâtir dans le sens de la longueur, à 6 mm du bord non fini.  
Couper la bordure en seize morceaux le long des lignes continues.

**6.** Sur l'ENDROIT, épingler deux bordures sur le devant par-dessus chaque boutonnière, en plaçant le bâti le long des lignes de piqûre, en faisant coïncider les petits cercles. Piquer le long des lignes de piqûre sur les longs bords des ouvertures entre les petits cercles. (Les deux bordures restantes seront piquées sur la ceinture devant DROIT).

**7.** Retourner les valeurs de couture vers l'INTÉRIEUR ; presser, en pressant les bordures vers l'extérieur. Sur l'ENVERS, piquer les extrémités de la bordure sur les valeurs de couture triangulaires entre les petits cercles restants, comme illustré.  
Rentrer au fer les bords non finis des boutonnières sur la parementure le long des lignes de piqûre.

**8.** ENDROIT CONTRE ENDROIT et ayant les bords non finis au même niveau, épingler le devant sur le CÔTÉ DEVANT (13) le long des bords du côté devant, en faisant coïncider les encoches. Piquer. Ouvrir la couture au fer.

**9.** Rentrer au fer 6 mm sur le bord supérieur de la POCHE (14). Retourner le bord supérieur vers l'EXTÉRIEUR le long de la ligne de pliure, en formant la parementure. Piquer le long de la ligne de couture sur les bords non finis.  
Pour soutenir le bord arrondi de la poche, piquer à 6 mm DANS la ligne de couture, à grands points. Recouper la valeur de couture dans la zone de la parementure à 6 mm.

**10.** Retourner les coins à l'ENDROIT, en retournant la parementure vers l'ENVERS ; presser, en rentrant au fer les bords non finis le long de la piqûre. Tirer sur le fauil pour donner forme à la courbe. Pour supprimer le volume, couper l'ampleur en faisant des encoches sur la valeur de couture le long des courbes jusqu'au fauil. Piquer la parementure près du bord intérieur.

**11.** Sur l'ENDROIT, épingler la poche sur le devant le long de la ligne de poche, en faisant coïncider les petits et les grands cercles. Piquer près des bords du côté et inférieur.

**12.** ENDROIT CONTRE ENDROIT, piquer la doublure sur le RABAT (15), en laissant ouvert le bord avec petits cercles.  
**COUPER LA COUTURE.**

**13.** Retourner le rabat ; presser. Bâtir à la machine à 1.5 cm du bord non fini. Sur l'ENDROIT, épingler le rabat sur le devant, en plaçant le bâti le long de la ligne de rabat, en faisant coïncider le petit et le grand cercle, comme illustré. Piquer le long du bâti. Recouper près de la piqûre. Rabattre le rabat ; presser.  
**SURPIQUER** le rabat à 6 mm du bord supérieur.

## DOS

**14.** ENDROIT CONTRE ENDROIT et ayant les bords non finis au même niveau, épingler le DOS (16) et le CÔTÉ DOS (17), en faisant coïncider les encoches. Piquer. Ouvrir les coutures au fer. Piquer le devant et le dos sur les bords du côté, en faisant coïncider les encoches.  
Finir le bord inférieur de la jupe en piquant à 6 mm du bord non fini.

## DOUBLURE

**15.** Piquer ensemble les pièces de la doublure dos, côté dos et côté devant, comme décrit pour la jupe. Presser les coutures vers le dos.

**16.** Piquer la DOUBLURE DEVANT (18) sur la doublure côté devant, en faisant coïncider les encoches. Piquer. Presser les coutures vers le devant.  
Relever au fer 3.5 cm sur le bord inférieur de la doublure.  
Pour faire un **OURLET ÉTROIT**, replier le bord non fini à 1.5 cm. Presser. Piquer l'ourlet en place.

**17.** ENDROIT CONTRE ENDROIT et ayant les bords non finis au même niveau, épingler la doublure devant sur le prolongement de parementure devant, en faisant coïncider les encoches. Piquer. Presser la couture vers la doublure.

**18.** Retourner la parementure devant vers l'INTÉRIEUR le long de la ligne de pliure. Épingler la parementure/doublure sur la jupe le long du bord supérieur ENVERS CONTRE ENVERS, en faisant coïncider les coutures et les encoches. Bâtir à travers le bord supérieur du devant jusqu'à l'encoche et entre les encoches du dos.

**19.** Pour **SOUTENIR** le bord supérieur de la jupe entre les encoches du devant et dos, relâcher légèrement la tension de l'aiguille. Sur l'ENDROIT, piquer à 1.5 cm du bord coupé à grands points. Piquer de nouveau à 6 mm de la première piqûre à l'intérieur de la valeur de couture.

## CEINTURE

**20.** Pour faire une **PIQÛRE DE SOUTIEN** sur les pièces de la CEINTURE DEVANT (19) et de la CEINTURE DOS (20), piquer à 1.3 cm du bord coupé dans le sens des flèches. Cette piqûre reste de façon permanente et aide à empêcher que les bords arrondis se déforment. (Montrée seulement dans le premier croquis).

**21.** Poser les autres bordures sur la ceinture devant DROIT, et rentrer au fer les bords coupés vers la piqûre sur la parementure de ceinture devant DROIT, comme décrit pour la jupe.

**22.** Piquer les pièces de la ceinture devant et la ceinture dos sur les bords du côté.  
ENDROIT CONTRE ENDROIT et ayant les bords non finis au même niveau, épingler le bord supérieur de la jupe sur le bord inférieur de la ceinture, en faisant coïncider les milieux, les coutures et les encoches, en tirant sur le fauil pour ajuster. (La ceinture s'étende 1.5 cm au-delà des bords du devant de la jupe). Piquer. **COUPER LA COUTURE.**  
Presser la couture vers la ceinture, en pressant la ceinture vers l'extérieur.

**23.** Piquer les extrémités de la parementure de ceinture. Rentrer au fer le bord à encoche à 1.3 cm. Recouper à 6 mm.  
ENDROIT CONTRE ENDROIT et ayant les bords non finis au même niveau, épingler la parementure sur la ceinture, en faisant coïncider les milieux et les coutures.  
Piquer le bord supérieur et les extrémités.  
**COUPER LA COUTURE.**

**24.** SOUS-PIQUER la parementure. Retourner la parementure vers l'INTÉRIEUR ; presser.  
Sur l'ENVERS, épingler le bord pressé de la parementure par-dessus la couture, en plaçant les épingles sur l'ENDROIT. Sur l'ENDROIT, **PIQUER DANS LE SILLON** de la couture, en saisissant le bord pressé de la parementure sur l'ENVERS.

## FINITION

**25.** Retourner la parementure vers l'EXTÉRIEUR sur le bord inférieur du vêtement.  
Piquer à travers la parementure à 5 cm du bord inférieur. Recouper la parementure près de la piqûre. Recouper la jupe jusqu'à 1.5 cm du bord intérieur de la parementure.

**26.** Retourner la parementure vers l'INTÉRIEUR ; presser, en relevant au fer un ourlet le long de la ligne d'ourlet. Coudre aux **POINTS DE CHAUSSON** l'ourlet en place, de façon invisible.

**27.** Épingler les bords pressés de la boutonnière de la parementure le long des coutures de la bordure. Coudre en place aux **POINTS COULÉS**, de façon invisible.

**28.** Superposer le devant DROIT au devant GAUCHE, en faisant coïncider les milieux. Coudre les boutons sur le devant GAUCHE sous les boutonnières.  
Coudre les boutons sur les petits cercles des rabats.