

FABRIC CUTTING LAYOUTS

⊕ Indicates Bustline, Waistline, Hipline and/or Biceps. Measurements refer to circumference of Finished Garment (Body Measurement + Wearing Ease + Design Ease). Adjust Pattern if necessary.

Lines shown are CUTTING LINES, however, 5/8" (1.5cm) SEAM ALLOWANCES ARE INCLUDED, unless otherwise indicated. See SEWING INFORMATION for seam allowance.

Find layout(s) by Garment/View, Fabric Width and Size. Layouts show approximate position of pattern pieces; position may vary slightly according to your pattern size.

All layouts are for with or without nap unless specified. For fabrics with nap, pile, shading or one-way design, use WITH NAP layout.

RIGHT SIDE OF PATTERN	WRONG SIDE OF PATTERN	RIGHT SIDE OF FABRIC	WRONG SIDE OF FABRIC

S/T = SIZE(S)/TAILLE(S)  
\* = WITH NAP/AVEC SENS  
S/L = SELVAGE(S)/LISIERE(S)  
AS/TT = ALL SIZE(S)/TOUTES TAILLE(S)  
\*\* = WITHOUT NAP/SANS SENS  
F/P = FOLD/PLIURE  
CF/PT = CROSSWISE FOLD/PLIURE TRAME

Position fabric as indicated on layout. If layout shows...

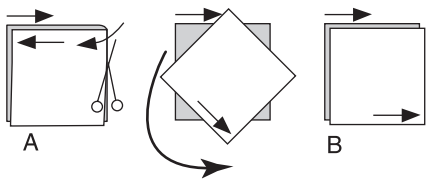
**GRAINLINE**—Place on straight grain of fabric, keeping line parallel to selvage or fold. ON “with nap” layout arrows should point in the same directions. (On Fur Pile fabrics, arrows point in direction of pile.)

**SINGLE THICKNESS**—Place fabric right side up. (For Fur Pile fabrics, place pile side down.)

DOUBLE THICKNESS

WITH FOLD—Fold fabric right sides together.

\* WITHOUT FOLD—With right sides together, fold fabric CROSSWISE. Cut fold from selvage to selvage (A). Keeping right sides together, turn upper layer completely around so nap runs in the same direction as lower layer.



**FOLD**—Place edge indicated exactly along fold of fabric. NEVER cut on this line.

When pattern piece is shown like this...



• Cut other pieces first, allowing enough fabric to cut this piece (A). Fold fabric and cut piece on fold, as shown (B).

★ Cut piece only once. Cut other pieces first, allowing enough fabric to cut this piece. Open fabric; cut piece on single layer.

Cut out all pieces along cutting line indicated for desired size using long, even scissor strokes, cutting notches outward.

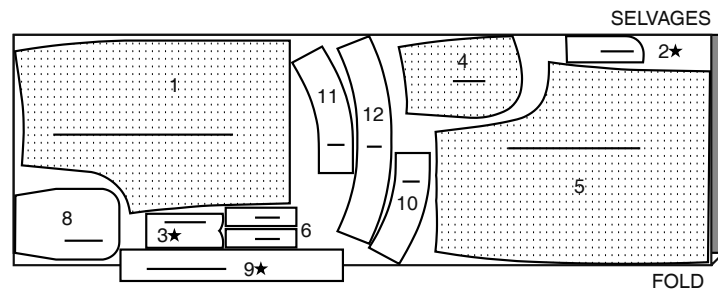
Transfer all markings and lines of construction before removing pattern tissue. (Fur Pile fabrics, transfer markings to wrong side.)

**NOTE:** Broken-line boxes ( a! b! c! ) in layouts represent pieces cut by measurements provided.

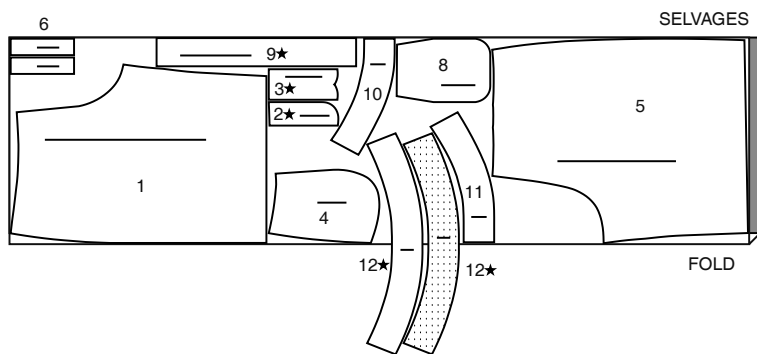
SHORTS A / SHORT A

PIECES: 1 2 3 4 5 6 8 9 10 11 12

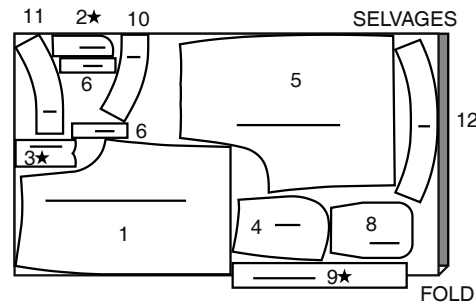
45" (115 cm) \*  
S/T  
8-10-12-14-16-18



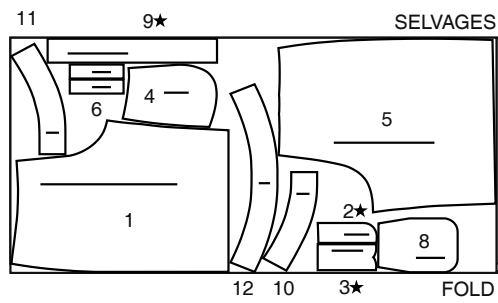
45" (115CM) \*  
S/T  
20-22-24-26



60" (150 cm) \*  
S/T  
8-10-12-14-16-18



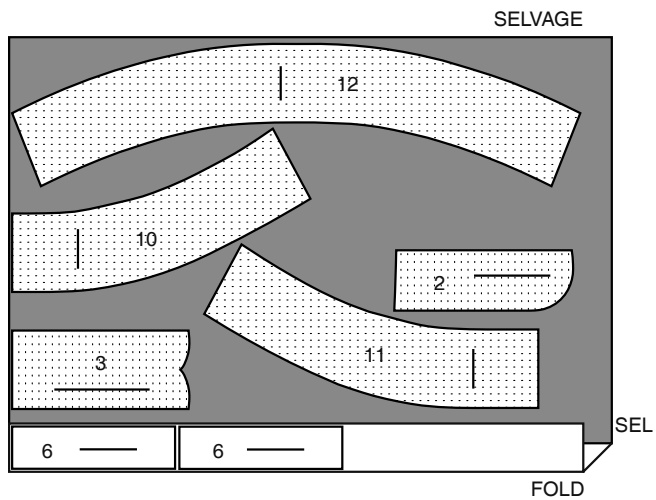
60" (150 cm) \*  
S/T  
20-22-24-26



INTERFACING A,B / ENTOILAGE A, B

PIECES: 2 3 6 10 11 12

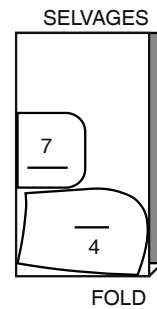
20" (51CM) \*\*  
AS/TT



LINING A,B / DOUBLURE A, B

PIECES: 4 7

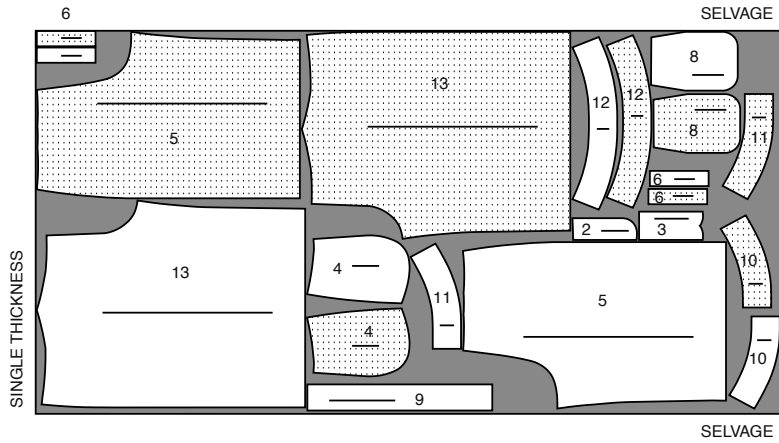
45" (115 cm) \*  
AS/TT



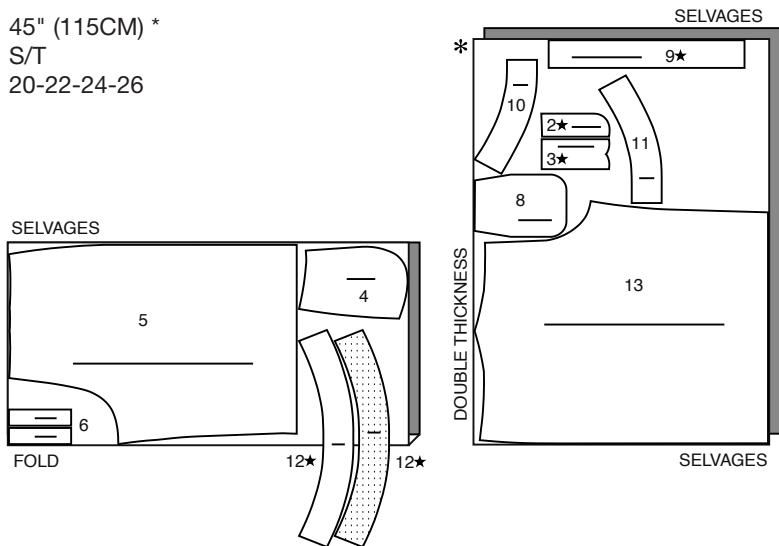
SHORTS B / SHORT B

PIECES: 2 3 4 5 6 8 9 10 11 12 13

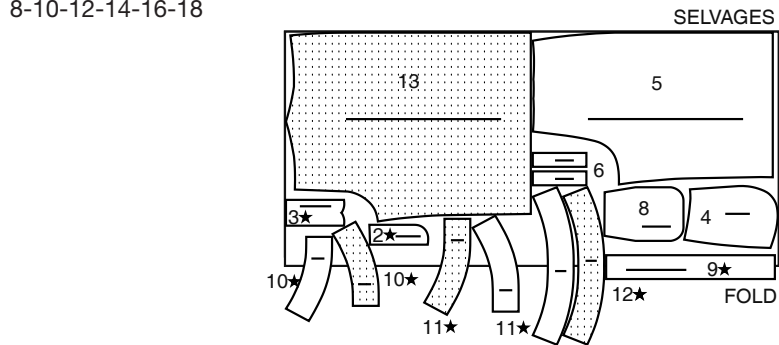
45" (115 cm) \*  
S/T  
8-10-12-14-16-18



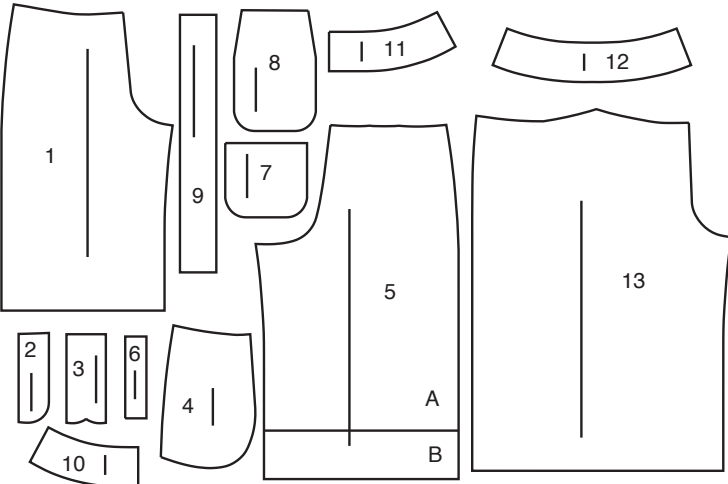
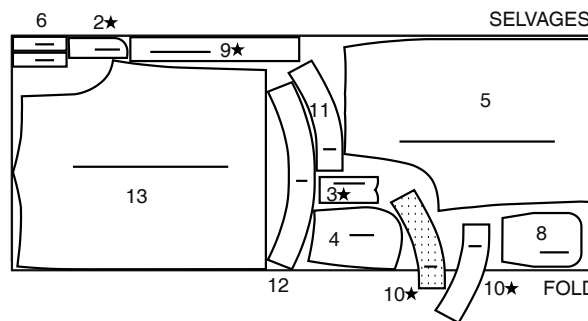
45" (115CM) \*  
S/T  
20-22-24-26



60" (150 cm) \*  
S/T  
8-10-12-14-16-18



60" (150 cm) \*  
S/T  
20-22-24-26



- |                              |  |
|------------------------------|--|
| 1 Front-A                    | 1 Devant - A                             |
| 2 Right Fly Facing-A,B       | 2 Parementure de braguette droite - A, B |
| 3 Left Fly-A,B               | 3 Braguette gauche - A, B                |
| 4 Front Pocket-A,B           | 4 Poche devant - A, B                    |
| 5 Back-A,B                   | 5 Dos - A, B                             |
| 6 Welt-A,B                   | 6 Bordure - A, B                         |
| 7 Pocket Lining-A,B          | 7 Doublure de poche - A, B               |
| 8 Back Pocket-A,B            | 8 Poche dos - A, B                       |
| 9 Carrier-A,B                | 9 Passant - A, B                         |
| 10 Right Front Waistband-A,B | 10 Ceinture devant droit - A, B          |
| 11 Left Front Waistband-A,B  | 11 Ceinture devant gauche - A, B         |
| 12 Back Waistband-A,B        | 12 Ceinture dos - A, B                   |
| 13 Front-B                   | 13 Devant - B                            |

BODY MEASUREMENTS / MESURES DU CORPS

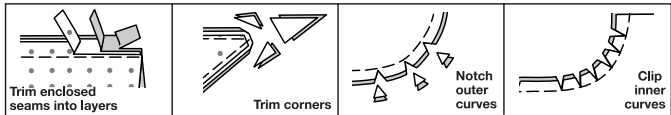
	MISSES/JEUNE FEMME										
Sizes/Tailles	8	10	12	14	16	18	20	22	24	26	
Bust (ins)	31½	32½	34	36	38	40	42	44	46	48	
Waist	24	25	26½	28	30	32	34	37	39	41	
Hip	33½	34½	36	38	40	42	44	46	48	50	
Bk. Wst Lgth.	15¾	16	16¼	16½	16¾	17	17¼	17½	17¾	18	
T. poitrine (cm)	80	83	87	92	97	102	107	112	117	122	
T. taille	61	64	67	71	76	81	87	94	97	104	
T. hanches	85	88	92	97	102	107	112	117	122	127	
Nuque à taille	40	40.5	41.5	42	42.5	43	44	44	45	46	

SEWING INFORMATION

**5/8" (1.5cm) SEAM ALLOWANCES ARE INCLUDED,**  
(unless otherwise indicated)  
**ILLUSTRATION SHADING KEY**

Right Side	Wrong Side	Interfacing	Lining	Underlining

Press as you sew. Press seams flat, then press open, unless otherwise instructed. Clip seam allowances, where necessary, so they lay flat.



GLOSSARY

Sewing methods in **BOLD TYPE** have Sewing Tutorial Video available. Scan QR CODE to watch videos:

**BELT LOOP/CARRIER** - see **Loops and Straps: “how to sew belt loops”** video.

**DART** - see **Darts: “sewing flat dart”** video.

**EDGE STITCH** - see **Machine Stitches: “how to edgestitch”** video.

**FINISH** - see **Seams: “how to finish seam allowances”** video.

**FLY FRONT ZIPPER** - See **“how to Fly Front Zipper”** video.

**REINFORCE** - see **Machine Stitches: “how to reinforce”** video.

**SLIPSTITCH** - Slide needle through a folded edge, then pick up a thread of underneath fabric.

**STAYSTITCH** - see **Machine Stitches: “how to do staystitching”** video.

**TACK** - See **Hand-Stitching: “how to tack”** video.

**TOPSTITCH** - see **Machine Stitches: “how to topstitch”** video.

**TRIM** - see **How to Sew: “Trim, Clip, and Layer Seams”** video.

**UNDERSTITCH** - see **Machine Stitches: “how to understitch”** video.

SEWING TUTORIALS



Build your skills viewing short, easy-to-follow videos at [simplicity.com/sewingtutorials](https://www.simplicity.com/sewingtutorials)

**PATTERN PIECES WILL BE IDENTIFIED BY NUMBERS THE FIRST TIME THEY ARE USED.**

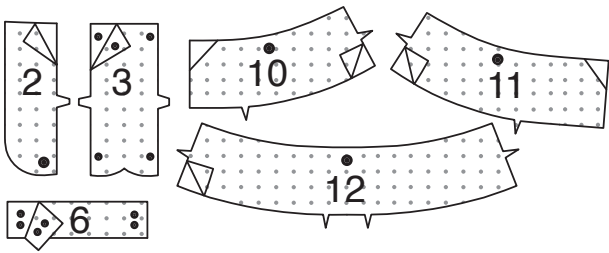
**STITCH 5/8” (1.5CM) SEAMS WITH RIGHT SIDES TOGETHER UNLESS OTHERWISE STATED.**

SHORTS A, B

**NOTE:** Illustrated for View A unless otherwise indicated.

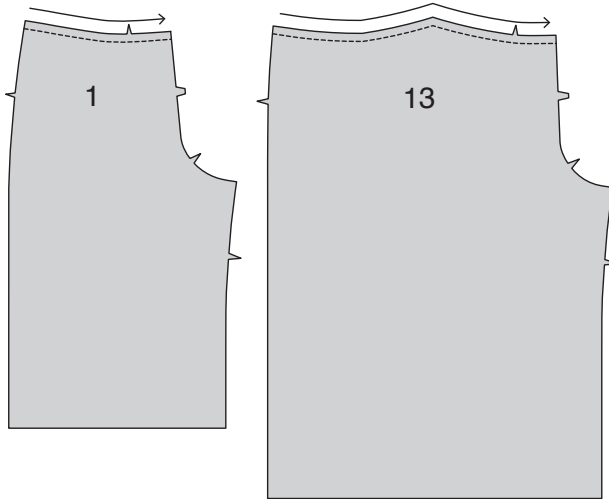
INTERFACING

**1.** Pin Interfacing to wrong side of each matching Fabric section. Trim corners as shown. Fuse, following manufacturer’s instructions.

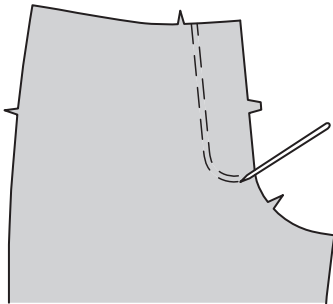


FRONT AND FLY

**2. STAYSTITCH** upper edge of FRONT (1 or 13) sections 1/2” (1.3cm) from raw edge in direction of arrows. This stitching stays in permanently to prevent stretching on curved edges. (Shown only in the first illustration).

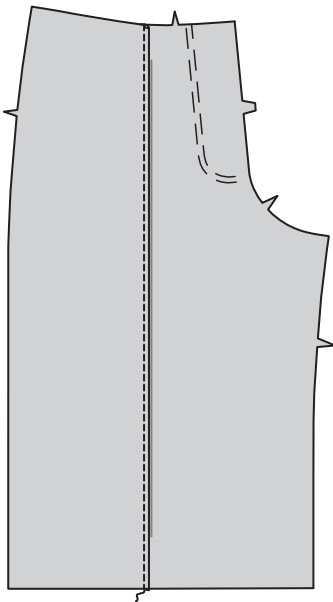


**3.** Transfer stitching line on RIGHT front to OUTSIDE with a water-soluble fabric marking pen OR by hand-basting. This will serve as a guide for the fly stitching later on.



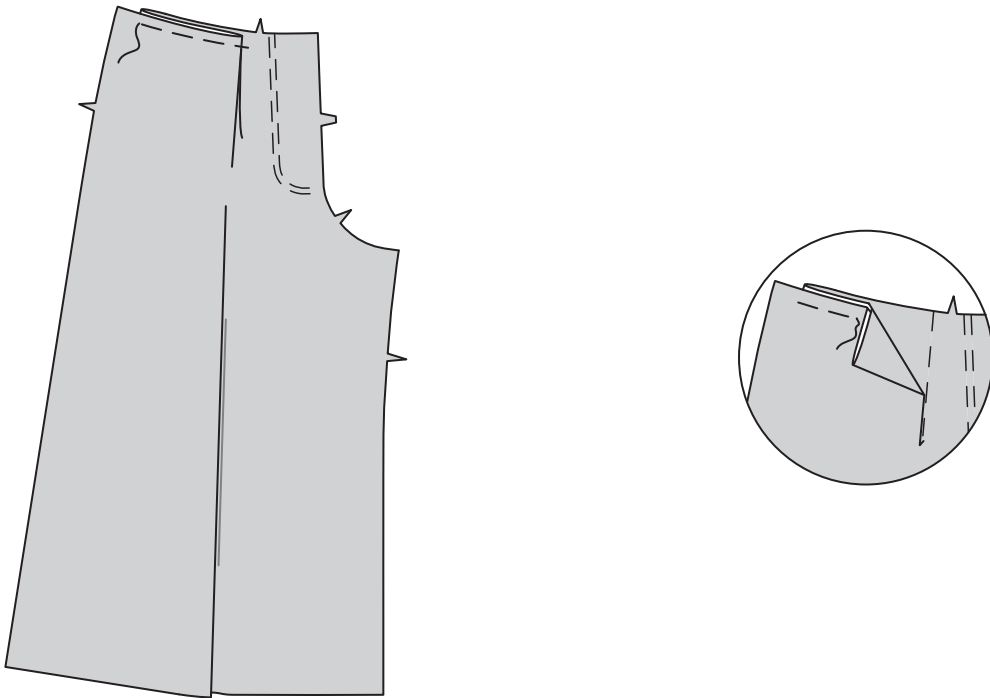
VIEW A:

**4.** To make tuck, on OUTSIDE, crease front along foldline; press. Stitch 1/8” (3mm) from pressed edge. Turn tuck toward center front.



VIEW B:

**5.** To make pleat, on OUTSIDE, fold front along solid line. Bring fold to broken line; pin. Press. Baste across upper edge.



**NOTE:** It may be necessary to shorten zipper. To make new zipper stop, place zipper along opening edge with pull tab 1/8” (3mm) below seamline. Mark placement of new zipper stop. Whipstitch across teeth at marking. Cut zipper 3/4” (2cm) below the new stop.

**6.** Construct **FLY FRONT ZIPPER** for views A, B, as follows:

**A-**Stitch front sections together at center front between large dot and notch.

**B-**Turn in left front opening edge along foldline; press.

**C-**Place closed zipper (face up) under left front opening edge, having pressed edge close to zipper teeth and zipper stop at small dot. Using a zipper foot, baste close to pressed edge.

**D-**With right sides together, fold LEFT FLY (3) in half lengthwise. Stitch lower edge. **TRIM.** Turn. Press. Baste raw edges.

**E-**On inside, pin left fly to left front opening edge (over zipper), matching notches and small dots, having raw edges even. Baste along previous basting for zipper.

**F-**On OUTSIDE, using a zipper foot, stitch close to pressed edge of front through all layers.

**G-FINISH** outer edge of RIGHT FLY FACING (2). Pin fly facing to right front opening edge, matching notches, and large dots. Stitch, ending at large dot. **TRIM. UNDERSTITCH** fly facing by pressing facing and seam away from garment, stitching through facing and seam allowances close to seam. Turn facing to inside.

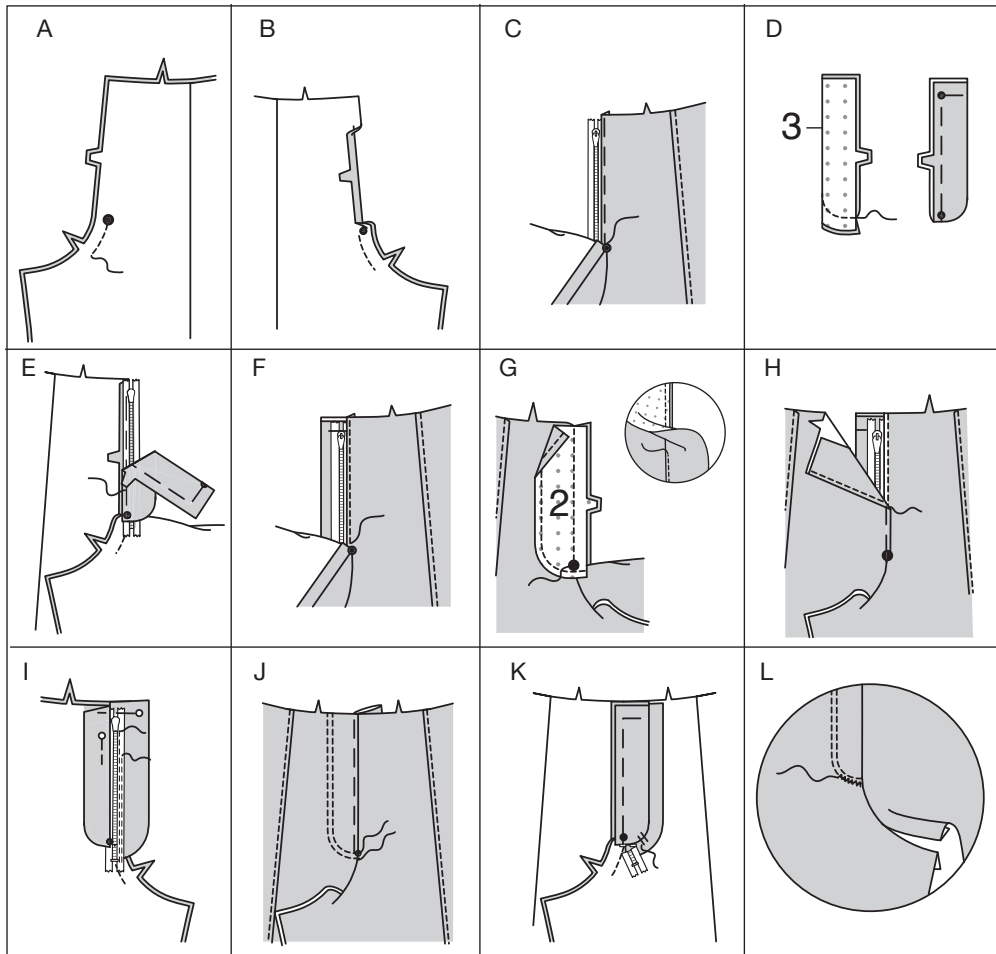
**H-**Lap right front over left, matching centers. Baste close to edge through all thicknesses.

**I-**Pin left fly out of the way. Open out fly facing. Pin remaining zipper tape to fly facing, keeping right front free. Using a zipper foot, stitch in place close to zipper teeth and along center of zipper tape.

**J-**Turn facing down. On outside, **TOPSTITCH** right front along stitching lines, keeping left fly free.

**K-**Turn left fly back in place. On inside, hand **TACK** fly and facing together at lower edge, as shown. Trim away excess zipper tape even with lower edge of fly, if needed.

**L-**If desired, on outside, machine-stitch a bar tack across lower end of fly through all thicknesses.

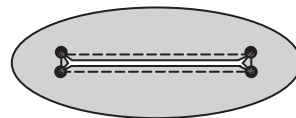
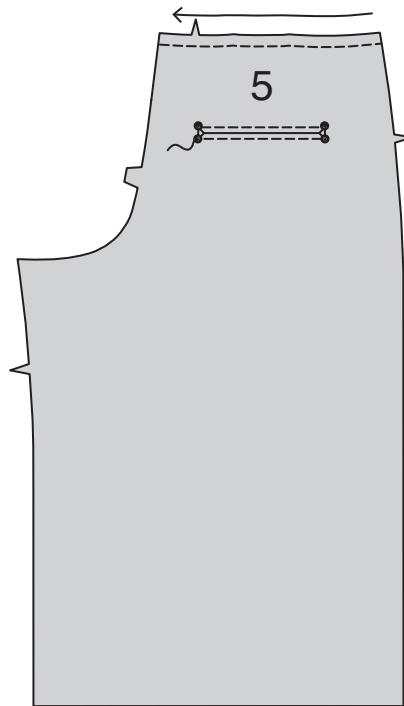


BACK AND WELT POCKETS

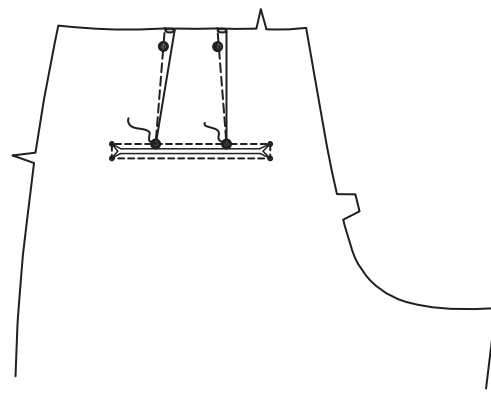
**7. STAYSTITCH** upper edge of BACK (5) sections in direction of arrows.

To **REINFORCE** pocket opening, stitch along stitching lines, pivoting at small dots, as shown.

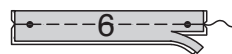
Slash back along solid lines between stitching, clipping diagonally to small dots, as shown.



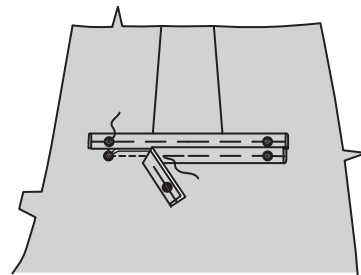
**8.** To make back **DARTS**, bring broken lines together, matching small dots. Stitch along broken line from wide end to point. Press darts toward center back.



**9.** With wrong sides together, fold each WELT (6) in half lengthwise, matching small dots. Baste 5/8” (1.5cm) from long edges. Trim seam allowances on edges to a scant 1/4” (6mm).

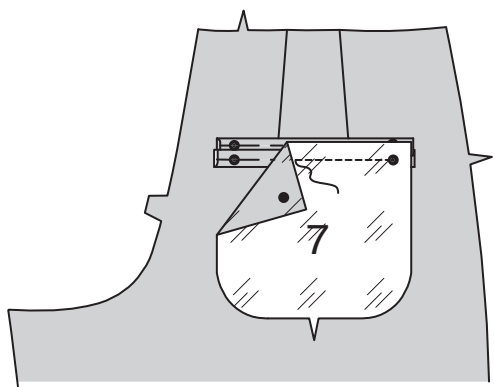


**10.** On outside, pin welts to back, matching small dots, having basting stitches along stitching lines, and fold edges away from opening. Stitch along stitching lines between small dots.

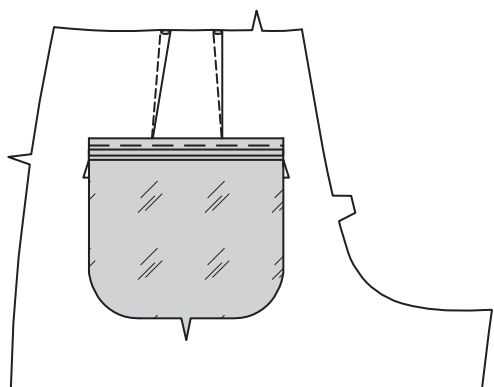




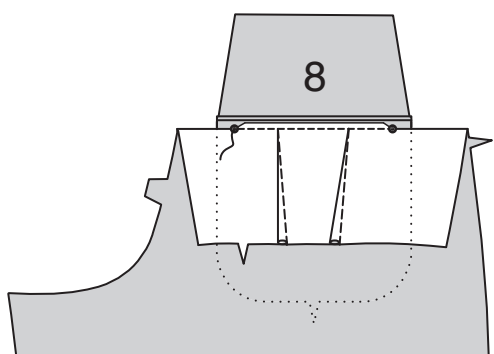
**11.** With RIGHT sides together, pin POCKET LINING (7) to back over lower stitching line, matching small dots and placing pocket seam line along stitching lines. Stitch along stitching line between small dots.



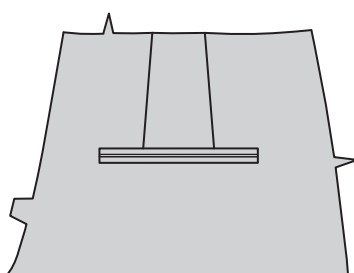
**12.** Turn pocket lining and welts to INSIDE through slash. Press welt toward pocket opening, pressing lining down.



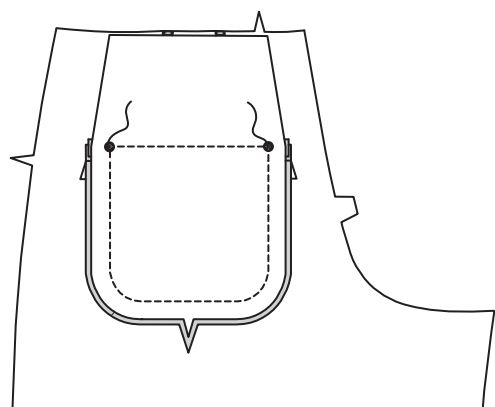
**13.** Turn upper edge of pants down over right side of back. Pin upper welt and back seam allowance to RIGHT side of BACK POCKET (8), matching small dots and having stitching lines along basting. Stitch along stitching line between small dots.



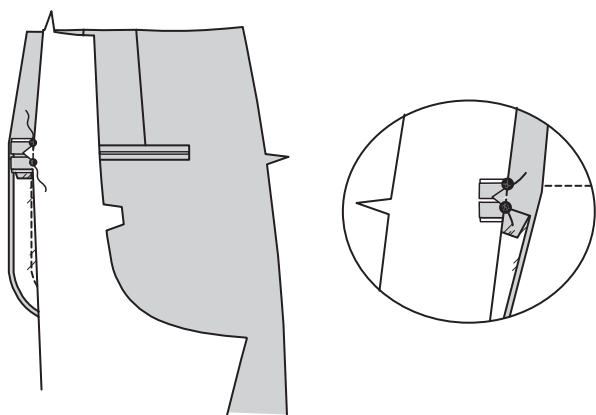
**14.** Turn upper edge of pants back in place and press, pressing welts toward pocket opening.  
**TIP-** Loosely whip stitch pressed edges of welts together so that they just meet. Remove stitching when pants have been completed.



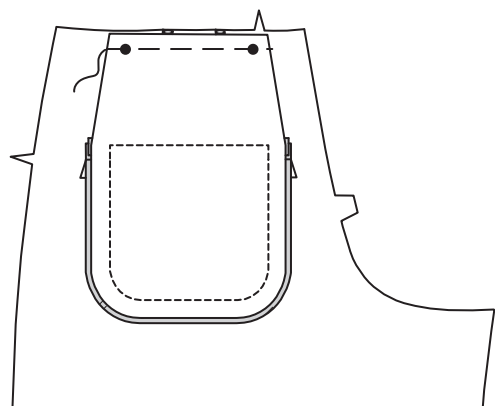
**15.** With RIGHT sides together and raw edges even, pin BACK POCKET (8) to pocket lining along side and lower edges. Stitch below small dots, keeping welts and back free.



**16.** Stitch pocket to lining along side and lower edges, catching in triangular ends of welts, as shown, keeping back free.

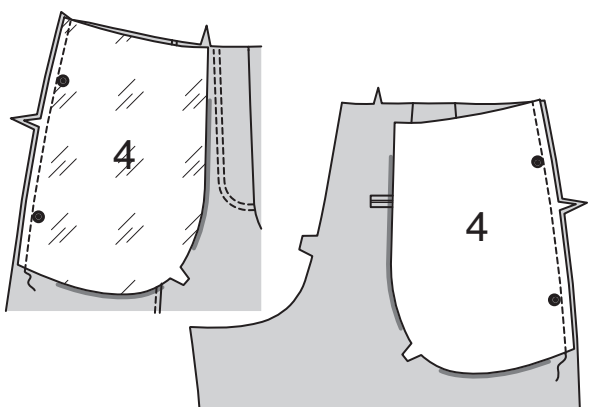


**17.** Baste upper edge of pocket to upper edge of back, matching small dots.

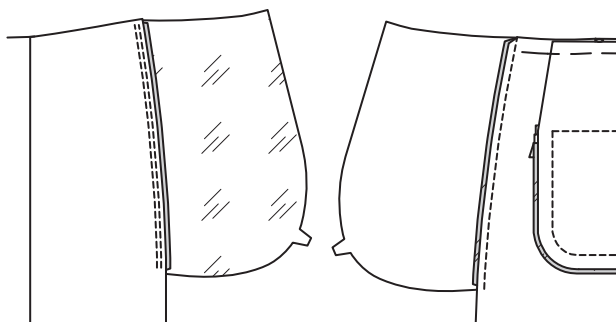


### FRONT POCKETS, LEG AND CROTCH SEAMS

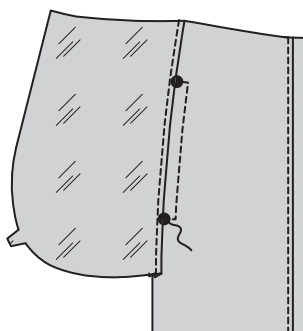
**18.** Apply pockets to side edges of front and back as follows:  
Pin FRONT POCKET (4) lining section to front, matching large dots and having raw edges even.  
Stitch in a 1/4" (6mm) seam.  
Stitch FRONT POCKET (4) fabric section to back in same manner.



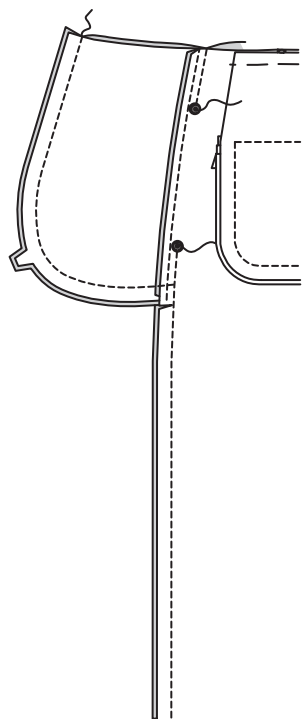
**19.** Press seam toward pocket, pressing pocket out. **UNDERSTITCH** front pocket.



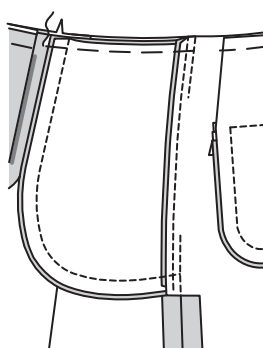
**VIEW A:**  
**20.** Press seam and pocket open. On OUTSIDE, **TOP-STITCH** front 1/4" (6mm) from finished edge, squaring stitching to large dots, as shown.



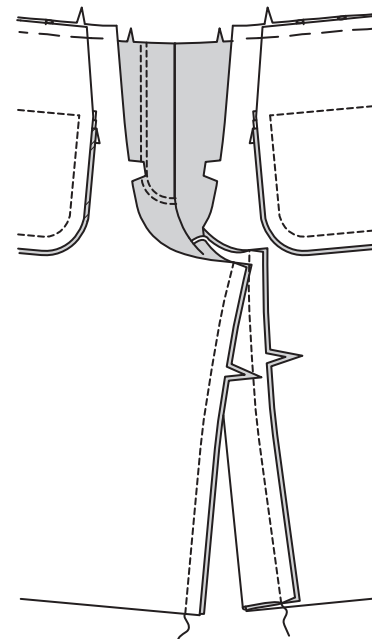
**VIEWS A, B**  
**21.** Pin front to back at sides. Stitch, leaving seam open between large dots. Stitch pocket edges together to side seams. Clip back seam allowances below pockets.



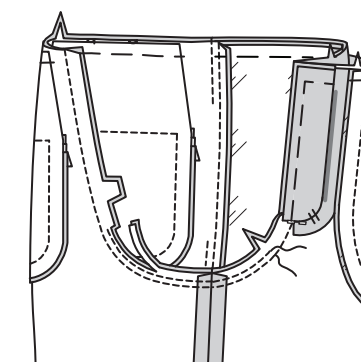
**22.** Turn pockets toward front along seamlines; press. Baste to upper edge of front.



**23.** Stitch front to back at inner leg seams.

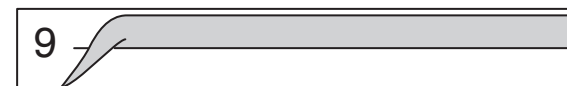


**24.** Slip one pants leg inside the other, having RIGHT sides together. Pin crotch seam matching inner leg seams. Stitch seam, connecting to previous stitching on front. Stitch again 1/4" (6mm) away in seam allowance along curve. Trim close to second stitching below notches.



### WAISTBAND AND CARRIERS

**25.** Fold CARRIER (9) in half, lengthwise with WRONG sides together. Press, setting in a crease.



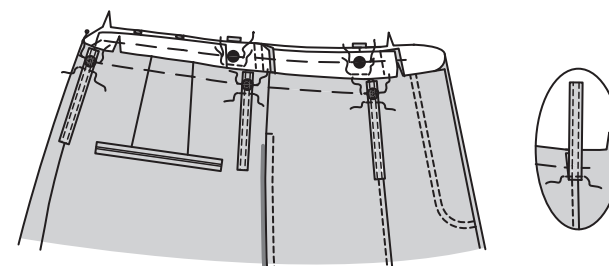
**26.** Open out long edges of carrier and turn them to WRONG side so that they meet at the crease. Press.



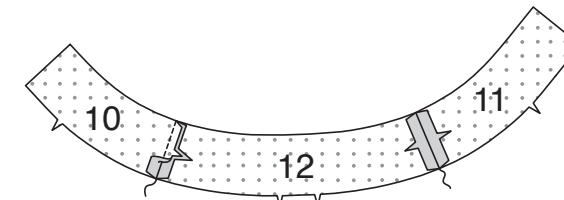
**27.** Fold carrier in half lengthwise, bringing pressed edges together. **EDGESTITCH** close to both long edges.



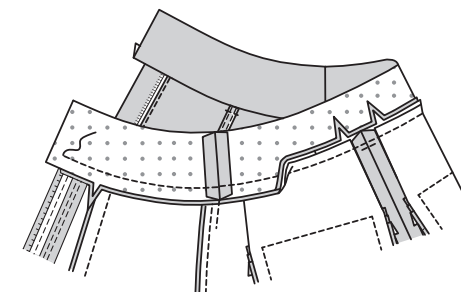
**28.** Cut carrier into five sections, each 4-1/4" (11cm) long. On OUTSIDE, baste carriers to upper edge of shorts, centering over large dots and having raw edges even. Stitch across carrier exactly 1" (2.5cm) from upper edge. Turn carriers up away from pants; press. **EDGESTITCH** each carrier close to turned edge.



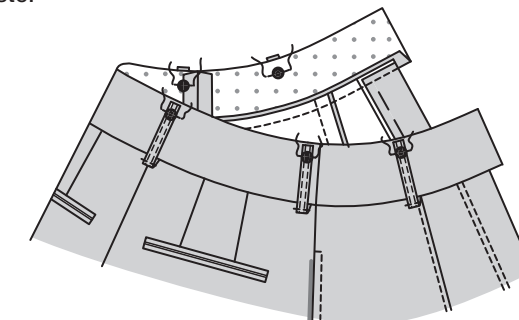
**NOTE:** Top of waistband is at natural waistline.  
**29.** Stitch interfaced RIGHT FRONT WAISTBAND (10) and LEFT FRONT WAISTBAND (11) to interfaced BACK FACING (12) at sides, matching notches. The remaining waistband sections will be used for the waistband facing.



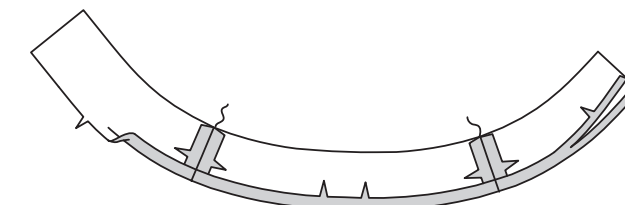
**30.** Pin waistband to upper edge of shorts, matching side seams, centers front and back. Stitch, being careful not to catch in free edges of carriers. **TRIM** seam; clip curves. Press waistband out, pressing seam toward waistband.



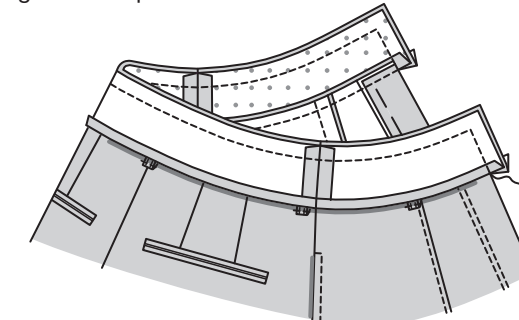
**31.** Turn carriers up, centering remaining ends over large dots on upper edge of waistband, having raw edges even. Baste.



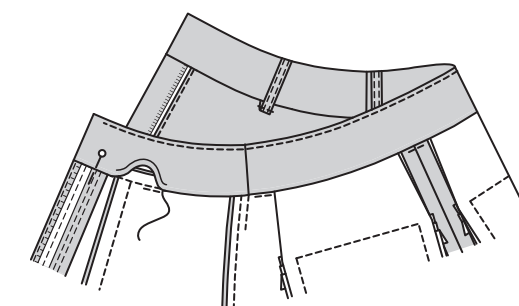
**32.** Stitch waistband facings together at sides same as for waistband. Turn in seam 5/8" (1.5cm) on lower edge of facing; press, easing in fullness. Press. Trim to 3/8" (1cm).  
**TIP-** Stitch lower edge of facing 5/8" (1.5cm) from raw edge to create a pressing guide. Trim after pressing.



**33.** With RIGHT sides together and raw edges even, pin facing to waistband (over carriers), matching side seams and centers. Stitch front and upper edges. **TRIM** seam. **UNDERSTITCH** facing as far as possible.



**34.** Turn facing to inside; press. **SLIPSTITCH** pressed edge of facing over seam.







**11.**ENDROIT CONTRE ENDROIT, épingler la DOUBLURE DE POCHE (7) sur le dos par-dessus la ligne de piqûre inférieure, en faisant coïncider les petits cercles et en plaçant la ligne de couture de la poche le long des lignes de piqûre. Piquer sur la ligne de piqûre entre les petits cercles.

**12.**Retourner la doublure de poche et les bordures vers l'INTÉRIEUR à travers la coupe.  
Presser la bordure vers l'ouverture de la poche, en pressant la doublure vers le bas.

**13.**Retourner le bord supérieur du pantalon vers le bas par-dessus l'endroit du dos.  
Épingler la bordure supérieure et la valeur de couture du dos sur l'ENDROIT de la POCHE DOS (8), en faisant coïncider les petits cercles et ayant les lignes de piqûre le long du bâti. Piquer sur la ligne de piqûre entre les petits cercles.

**14.**Retourner le bord supérieur du pantalon dos en place et presser, en pressant les bordures vers l'ouverture de la poche.  
**ASTUCE-** Surfiler lâchement les bords pressés des bordures ensemble de sorte qu'ils se rejoignent. Enlever la piqûre une fois le pantalon terminé.

**15.**ENDROIT CONTRE ENDROIT et ayant les bords non finis au même niveau, épingler la POCHE DOS (8) sur la doublure de poche le long des bords du côté et inférieur.  
Piquer au-dessous de petits cercles, en maintenant libres les bordures et le dos.

**16.**Piquer la poche sur la doublure le long des bords du côté et inférieur, en saisissant les extrémités triangulaires des bordures, comme illustré, en maintenant le dos libre.

**17.**Bâtir le bord supérieur de la poche sur le bord supérieur du dos, en faisant coïncider les petits cercles.

POCHES DEVANT, COUTURES DE JAMBE ET  
D'ENTREJAMBE

**18.**Poser les poches sur les bords du côté du devant et dos comme suit : Épingler la doublure de POCHE DEVANT (4) sur le devant, en faisant coïncider les grands cercles et ayant les bords non finis au même niveau.  
Piquer en couture de 6 mm.  
Piquer de la même façon la pièce en tissu de la POCHE DEVANT (4) sur le dos.

**19.**Presser la couture vers la poche, en pressant la poche vers l'extérieur.  
**SOUS-PIQUER** la poche devant.

MODÈLE A :

**20.**Presser la couture et la poche ouvertes. Sur l'ENDROIT, **SURPIQUER** le devant à 6 mm du bord fini, en piquant à angle droit aux grands cercles, comme illustré.

MODÈLES A, B

**21.**Épingler le devant et le dos sur les côtés. Pique en laissant la couture ouverte entre les grands cercles. Piquer les bords de la poche ensemble sur les coutures latérales. Cranter les valeurs de couture du dos au-dessous des poches.

**22.**Retourner les poches vers le devant le long des lignes de couture ; presser.  
Bâtir jusqu'au bord supérieur du devant.

**23.**Piquer le devant et le dos sur les coutures intérieures de la jambe.

**24.**Enfiler une jambe du pantalon dans l'autre, ENDROIT CONTRE ENDROIT.  
Épingler la couture d'entrejambe en faisant coïncider les coutures intérieures de la jambe.  
Piquer la couture, en raccordant avec la piqûre précédente sur le devant.  
Piquer de nouveau à 6 mm dans la valeur de couture le long de la courbe.  
Recouper près de la seconde piqûre au-dessous des encoches.

CEINTURE ET PASSANTS

**25.**Plier le PASSANT (9) en deux dans le sens de la longueur, ENVERS CONTRE ENVERS. Presser en marquant un pli.

**26.**Déplier les longs bords du passant et les retourner vers l'ENVERS de sorte qu'ils se rejoignent sur le pli. Presser.

**27.**Plier le passant en deux dans le sens de la longueur, en amenant les bords pressés l'un sur l'autre.  
**PIQUER LE BORD** près de deux longs bords.

**28.**Couper le passant en cinq morceaux de 11 cm de longueur.  
Sur l'ENDROIT, bâtir les passants sur le bord supérieur du short, en centrant par-dessus les grands cercles et ayant les bords non finis au même niveau.  
Piquer à travers le passant exactement à 2.5 cm du bord supérieur.  
Relever les passants à l'opposé du pantalon ; presser.  
**PIQUER LE BORD** sur chaque passant près du bord retourné.

**NOTE :** Le haut de la ceinture est sur la ligne naturelle de la taille.

**29.**Piquer la CEINTURE DEVANT DROIT (10) et la CEINTURE DEVANT GAUCHE (11) entoilées sur la PAREMENTURE DOS (12) entoilée sur les côtés, en faisant coïncider les encoches. Les pièces restantes de la ceinture seront utilisées pour la parementure de ceinture.

**30.**Épingler la ceinture sur le bord supérieur du short, en faisant coïncider les coutures du côté et les milieux devant et dos. Piquer en veillant à ne pas saisir les bords libres des passants.  
**COUPER LA COUTURE** ; cranter les courbes.  
Presser la ceinture vers l'extérieur, en pressant la couture vers la ceinture.

**31.**Relever les passants, en centrant les extrémités restantes par-dessus les grands cercles sur le bord supérieur de la ceinture et ayant les bords non finis au même niveau. Bâtir.

**32.**Piquer les parementures de ceinture ensemble sur les côtés comme décrit pour la ceinture.  
Replier la couture 1.5 cm sur le bord inférieur de la parementure ; presser, en répartissant l'ampleur. Presser. Recouper à 1 cm.  
**ASTUCE** – Piquer le bord inférieur de la parementure à 1.5 cm du bord non fini pour créer un guide pour repasser. Recouper après presser.

**33.**ENDROIT CONTRE ENDROIT et ayant les bords non finis au même niveau, épingler la parementure sur la ceinture (par-dessus les passants), en faisant coïncider les coutures du côté et les milieux.  
Piquer les bords du devant et supérieur. **COUPER LA COUTURE. SOUS-PIQUER** la parementure aussi loin que possible.

**34.**Retourner la parementure vers l'intérieur ; presser. Coudre le bord pressé de la parementure par-dessus la couture aux **POINTS COULÉS**.

FINITION

**35.**Faire la boutonnière sur la marque du devant droit.  
Coudre le bouton sur le petit cercle de la ceinture gauche.

**36. MODÈLE A :** rejoindre les coutures de la jambe. Presser le long du rempli devant et de la pliure dos jusqu'à 23 cm du bord supérieur du dos, en formant les plis.

**MODÈLE B :** rejoindre les coutures de la jambe. Presser le long des pliures devant et dos jusqu'à 23 cm du bord supérieur du dos, en formant les plis.

MODÈLES A, B :

**37.**Relever un ourlet de 3.8 cm sur le bord inférieur du short ; bâtir près de la pliure.  
Rentrer au fer 6 mm sur le bord non fini intérieur ; bâtir près du bord pressé.  
Sur l'ENDROIT, **SURPIQUER** le long du bâti supérieur.