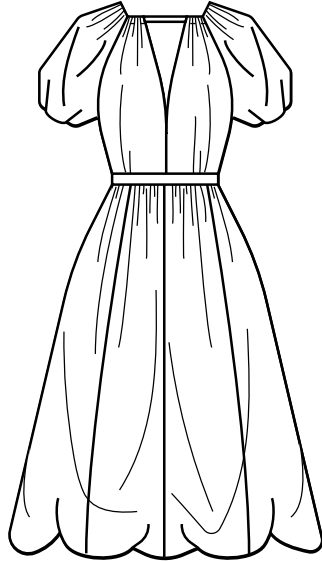
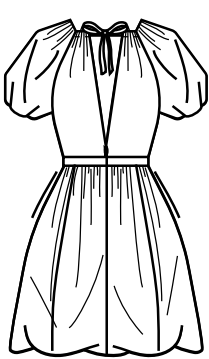


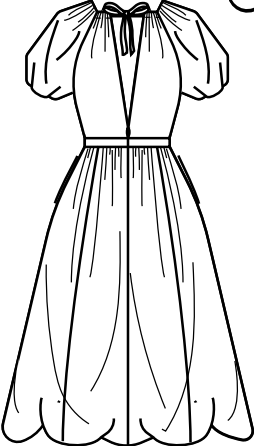
A



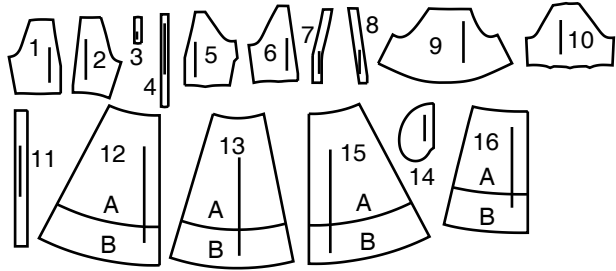
B



A



B



- 1 Bodice Front-A,B

2 Bodice Back-A,B

3 Strap-A,B

4 Tie End-A,B

5 Bodice Front Lining-A,B

6 Bodice Back Lining-A,B

7 Front Interfacing-A,B

8 Back Interfacing-A,B

9 Sleeve-A,B

10 Sleeve Stay-A,B

11 Waistband-A,B

12 Skirt Front-A,B

13 Skirt Side Front and Side Back-A,B

14 Pocket-A,B

15 Skirt Back-A,B

16 Skirt Lining-A,B
- 1 Corsage devant - A, B

2 Corsage dos - A, B

3 Bretelle - A, B

4 Attache - A, B

5 Doublure corsage devant - A, B

6 Doublure corsage dos - A, B

7 Entoilage devant - A, B

8 Entoilage dos - A, B

9 Manche - A, B

10 Soutien de manche - A, B

11 Ceinture - A, B

12 Jupe devant - A, B

13 Jupe côté devant et côté dos - A, B

14 Poche - A, B

15 Jupe dos - A, B

16 Doublure de jupe - A, B

BODY MEASUREMENTS / MESURES DU CORPS

MISSES/JEUNE FEMME											
Sizes/Tailles	6	8	10	12	14	16	18	20	22	24	
Bust (ins)	30½	31½	32½	34	36	38	40	42	44	46	
Waist	23	24	25	26½	28	30	32	34	37	39	
Hip	32½	33½	34½	36	38	40	42	44	46	48	
Bk. Wst Lgth.	15½	15¾	16	16¼	16½	16¾	17	17¼	17½	17¾	
T. poitrine (cm)	78	80	83	87	92	97	102	107	112	117	
T. taille	58	61	64	67	71	76	81	87	94	97	
T. hanches	83	85	88	92	97	102	107	112	117	122	
Nuque à taille	39.5	40	40.5	41.5	42	42.5	43	44	44	45	

FABRIC CUTTING LAYOUTS

⊕ Indicates Bustline, Waistline, Hipline and/or Biceps. Measurements refer to circumference of Finished Garment (Body Measurement + Wearing Ease + Design Ease). Adjust Pattern if necessary.

Lines shown are CUTTING LINES, however, 5/8" (1.5cm) SEAM ALLOWANCES ARE INCLUDED, unless otherwise indicated. See SEWING INFORMATION for seam allowance.

Find layout(s) by Garment/View, Fabric Width and Size. Layouts show approximate position of pattern pieces; position may vary slightly according to your pattern size.

All layouts are for with or without nap unless specified. For fabrics with nap, pile, shading or one-way design, use WITH NAP layout.

RIGHT SIDE OF PATTERN	WRONG SIDE OF PATTERN	RIGHT SIDE OF FABRIC	WRONG SIDE OF FABRIC
-----------------------	-----------------------	----------------------	----------------------

S/T = SIZE(S)/TAILLE(S)
* = WITH NAP/AVEC SENS
S/L = SELVAGE(S)/LISIÈRE(S)
AS/TT = ALL SIZE(S)/TOUTES TAILLE(S)
** = WITHOUT NAP/SANS SENS
F/P = FOLD/PLIURE
CF/PT = CROSSWISE FOLD/PLIURE TRAME

Position fabric as indicated on layout. If layout shows...

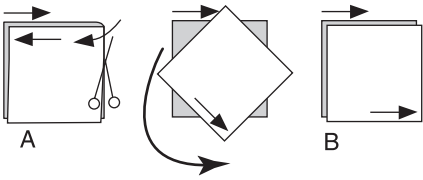
GRAINLINE—Place on straight grain of fabric, keeping line parallel to selvage or fold. ON “with nap” layout arrows should point in the same directions. (On Fur Pile fabrics, arrows point in direction of pile.)

SINGLE THICKNESS—Place fabric right side up. (For Fur Pile fabrics, place pile side down.)

DOUBLE THICKNESS

WITH FOLD—Fold fabric right sides together.

* WITHOUT FOLD—With right sides together, fold fabric CROSSWISE. Cut fold from selvage to selvage (A). Keeping right sides together, turn upper layer completely around so nap runs in the same direction as lower layer.



FOLD—Place edge indicated exactly along fold of fabric. NEVER cut on this line.

When pattern piece is shown like this...

• Cut other pieces first, allowing enough fabric to cut this piece (A). Fold fabric and cut piece on fold, as shown (B).

★ Cut piece only once. Cut other pieces first, allowing enough fabric to cut this piece. Open fabric; cut piece on single layer.

Cut out all pieces along cutting line indicated for desired size using long, even scissor strokes, cutting notches outward.

Transfer all markings and lines of construction before removing pattern tissue. (Fur Pile fabrics, transfer markings to wrong side.)

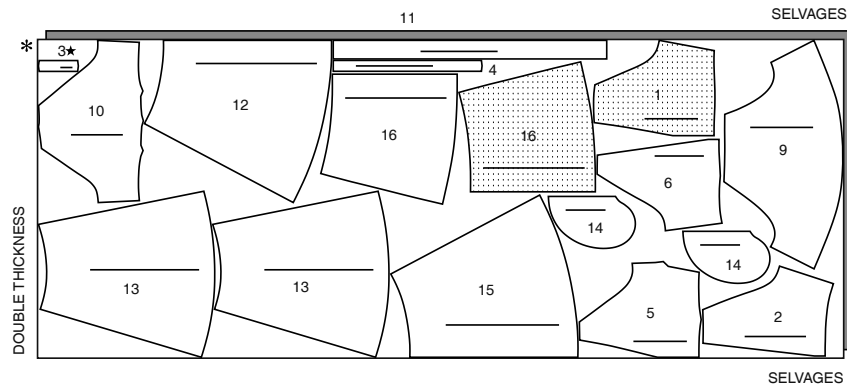
NOTE: Broken-line boxes (a! b! c!) in layouts represent pieces cut by measurements provided.

DRESS A / ROBE A

PIECES 1 2 3 4 5 6 9 10 11 12 13 14 15 16

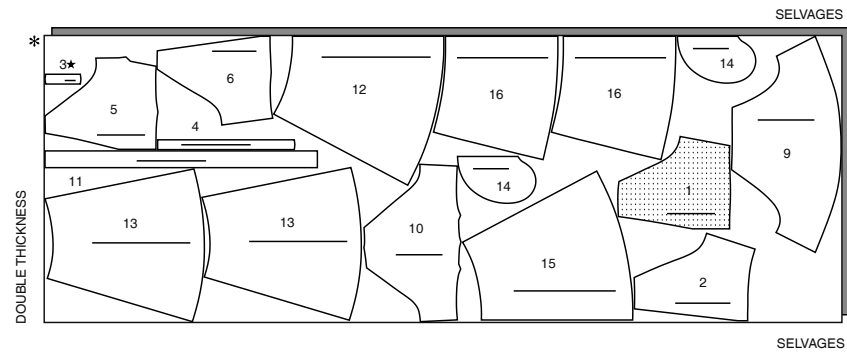
45" (115CM)*

S/T 6 8 10 12 14 16 18 20



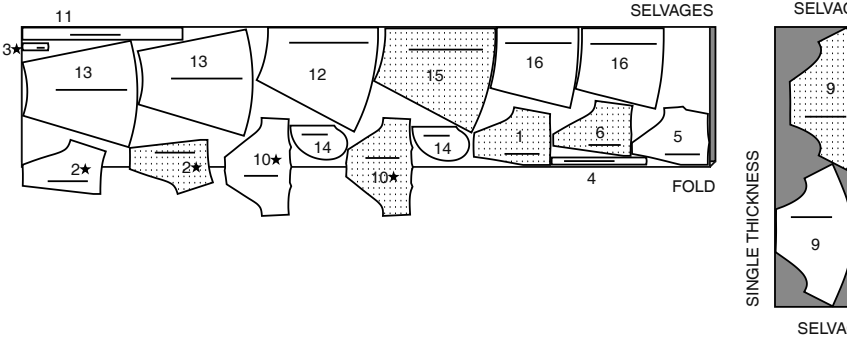
45" (115CM)*

S/T 22 24



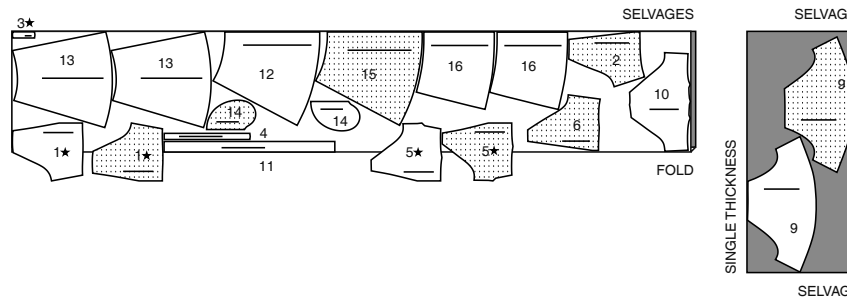
60" (150CM)*

S/T 6 8 10 12 14 16



60" (150CM)*

S/T 18 20 22 24

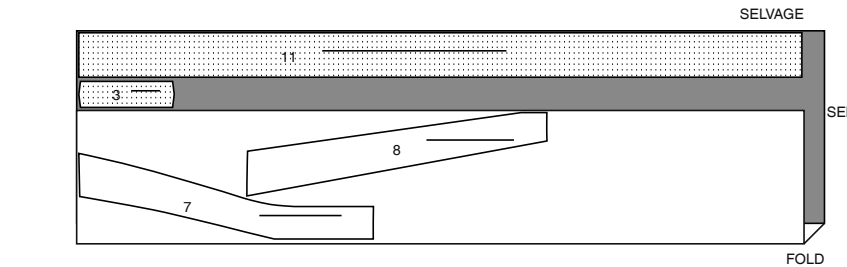


INTERFACING A,B / ENTOILAGE A, B

PIECES 3 7 8 11

20" (51CM)

AS/TT

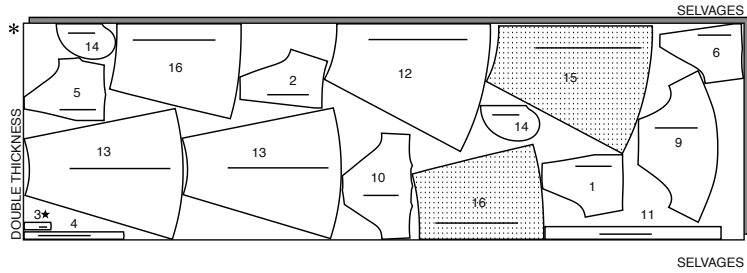


DRESS B / ROBE B

PIECES 1 2 3 4 5 6 9 10 11 12 13 14 15 16

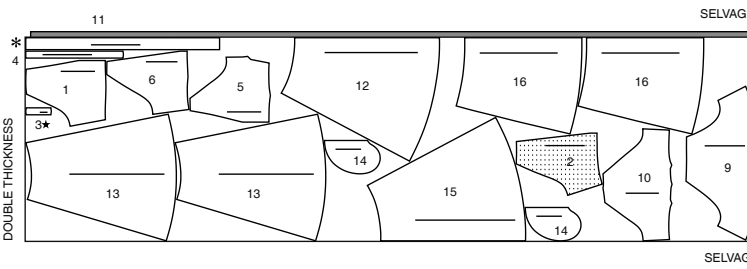
45" (115CM)*

S/T 6 8 10 12 14 16 18



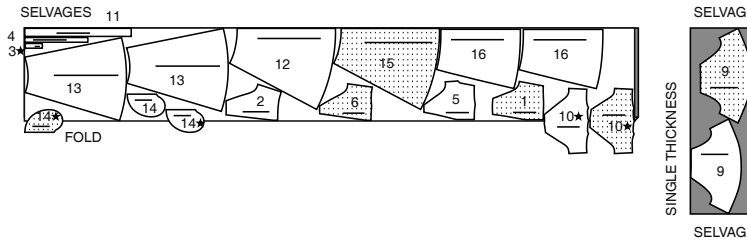
45" (115CM)*

S/T 20 22 24



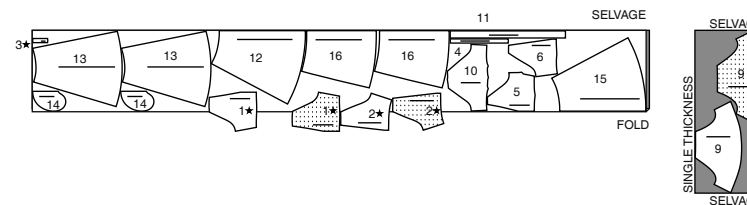
60" (150CM)*

S/T 6 8 10 12 14 16



60" (150CM)*

S/T 18 20 22 24



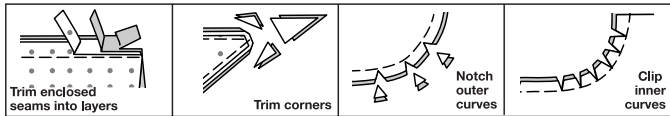
SEWING INFORMATION

5/8" (1.5cm) SEAM ALLOWANCES ARE INCLUDED,
(unless otherwise indicated)

ILLUSTRATION SHADING KEY

Right Side	Wrong Side	Interfacing	Lining	Underlining

Press as you sew. Press seams flat, then press open, unless otherwise instructed. Clip seam allowances, where necessary, so they lay flat.



GLOSSARY

Sewing methods in **BOLD TYPE** have Sewing Tutorial Video available. Scan QR CODE to watch videos:

DART - See **Darts**: “sewing flat dart” video.

EASE/GATHER - See **Gathering**: “sewing two row gathers” video.

EDGESTITCH - See **Machine Stitches**: “how to edgestitch” video.

REINFORCE - See **Machine Stitches**: “how to reinforce” video.

STAYSTITCH - See **Machine Stitches**: “how to do stay-stitching” video.

UNDERSTITCH - See **Machine Stitches**: “how to understitch” video.

INVISIBLE ZIPPER - See **Zipper**: “sewing an invisible zipper” video.

SLIPSTITCH - Slide needle through a folded edge, then pick up a thread of underneath fabric.

SEWING TUTORIALS



Build your skills viewing short, easy-to-follow videos at [simplicity.com/sewingtutorials](https://www.simplicity.com/sewingtutorials)

PATTERN PIECES WILL BE IDENTIFIED BY NUMBERS THE FIRST TIME THEY ARE USED.

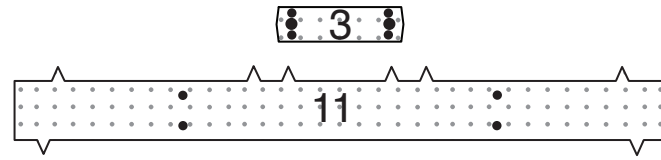
STITCH SEAMS WITH RIGHT SIDES TOGETHER UNLESS OTHERWISE STATED.

NOTE: Under each sub-heading, the first view will be illustrated, unless otherwise illustrated.

DRESS A, B

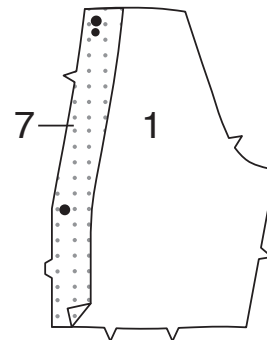
INTERFACING

1. Fuse INTERFACING to wrong side of each matching FABRIC section, following manufacturer's instructions.

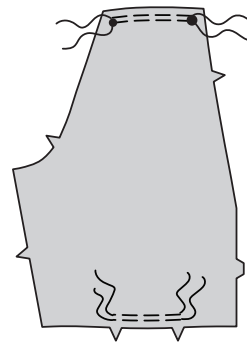


BODICE FRONT

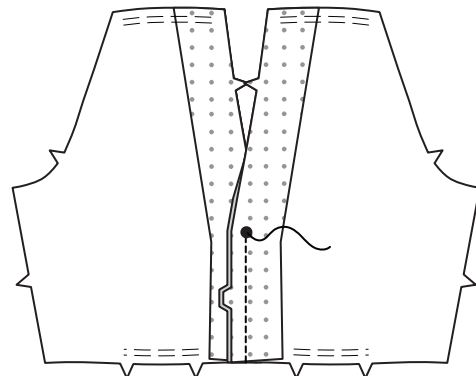
2. Fuse FRONT INTERFACING (7) to wrong side of BODICE FRONT (1), matching centers and dots, following manufacturer's instructions.



3. **GATHER** upper edge of bodice front between small and large dot. **GATHER** lower edge of bodice front between notches.

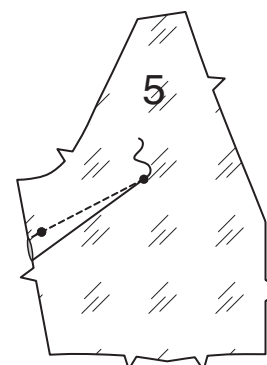


4. Pin bodice front sections, RIGHT sides together, matching dots. Stitch from lower edge to large dot.

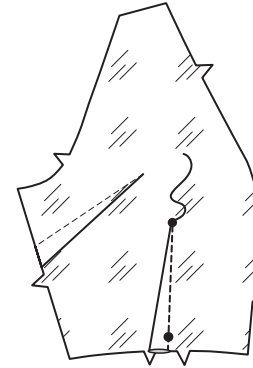


BODICE FRONT LINING

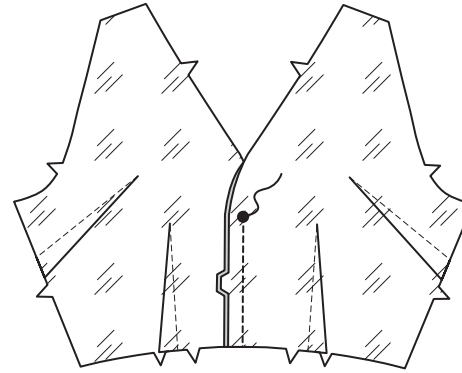
5. To make bust **DART** in BODICE FRONT LINING (5), with RIGHT sides together, bring broken lines together, matching small dots. Stitch along broken line from raw edge to point. Press dart downward.



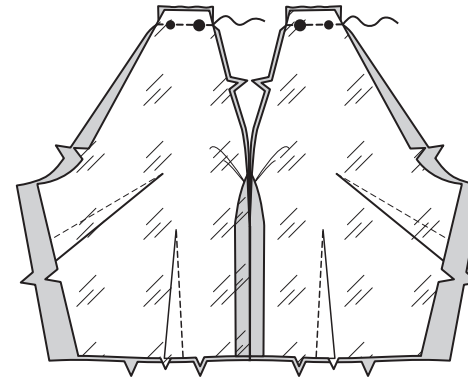
6. To make waist **DART** in bodice front lining, with RIGHT sides together, bring broken lines together, matching small dots. Stitch along broken line from raw edge to point. Press dart toward side.



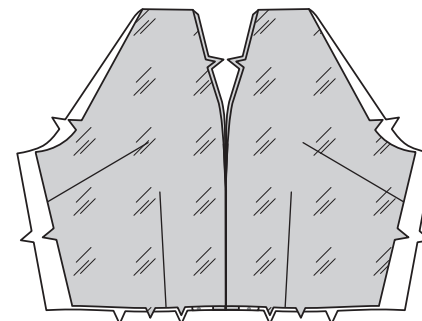
7. Pin bodice front lining sections, RIGHT sides together, matching dots. Stitch from lower edge to large dot.



8. With RIGHT sides together, pin lining to bodice front, matching centers and dots. Adjust gathers on upper edge; baste. Stitch; trim seams.

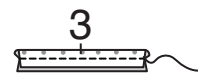


9. Turn lining to inside; press.



STRAP AND BACK LINING

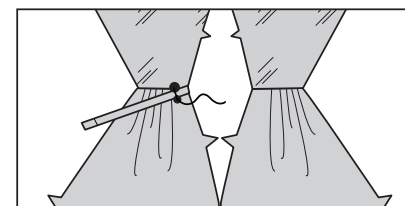
10. Fold STRAP (3) in half lengthwise, RIGHT sides together. Stitch long edge in a 3/8" (1cm) seam; trim seam.



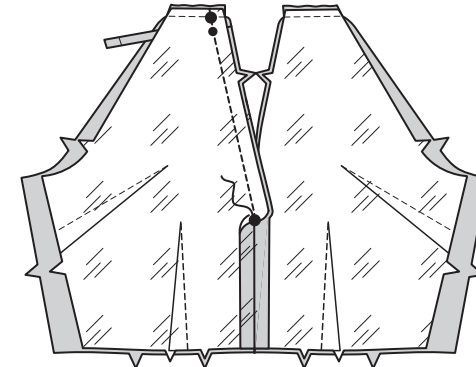
11. Turn strap RIGHT side out; press. Baste raw edges.



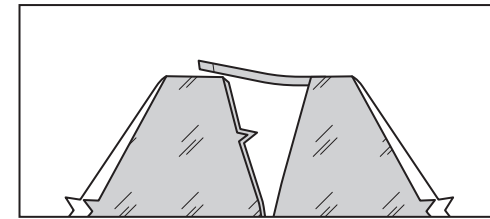
12. Open out lining on upper edge. On outside, pin strap to upper edge of right bodice front, matching small and large dots, having raw edges even. Baste.



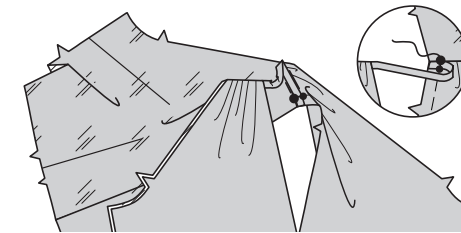
13. Pin lining to right bodice front, RIGHT sides together, matching centers and dots. Stitch right front, from upper edge to large dot; trim seam.



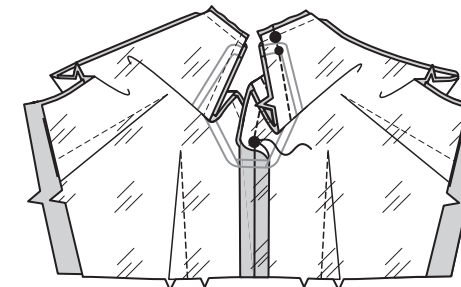
14. Turn lining to inside, turning strap out; press.



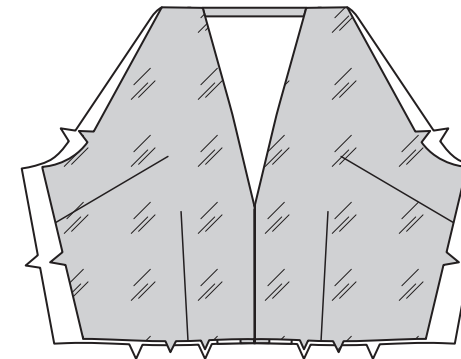
15. Keeping left bodice lining free, on outside, pin free end of strap to upper edge of left bodice front, matching small and large dots, having raw edges even. Baste.



16. Keeping right bodice free, pin left lining to left bodice front, RIGHT sides together, matching centers and dots. Stitch left front, from upper edge to lower large dot; trim seam.

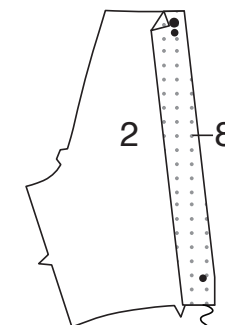


17. Turn lining to inside, turning strap out; press.

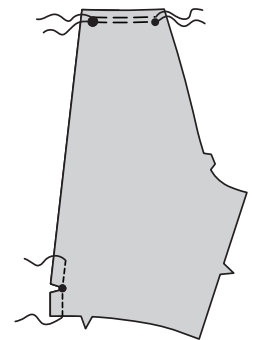


BODICE BACK

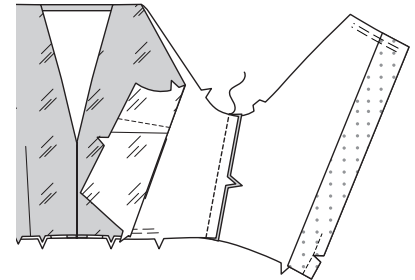
18. Fuse BACK INTERFACING (8) to wrong side of BODICE BACK (2), wrong sides together, matching centers and dots, following manufacturer's instructions



19. REINFORCE bodice center back through small dot. Clip to dot. **GATHER** upper edge of bodice back between small and large dots.

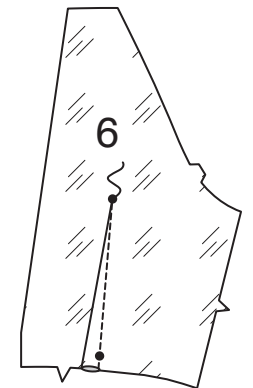


20. Keeping lining free, stitch bodice back to bodice front at sides.

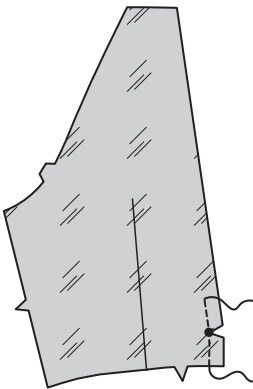


BODICE BACK LINING AND TIE ENDS

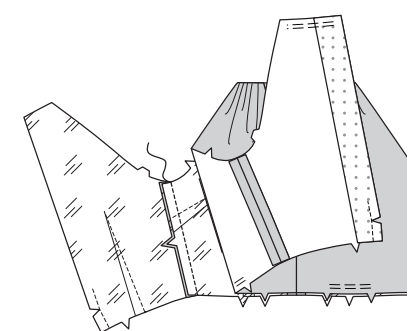
21. To make **DART** in BODICE BACK LINING (6), with RIGHT sides together, bring broken lines together, matching small dots. Stitch along broken line from raw edge to point. Press dart toward center back.



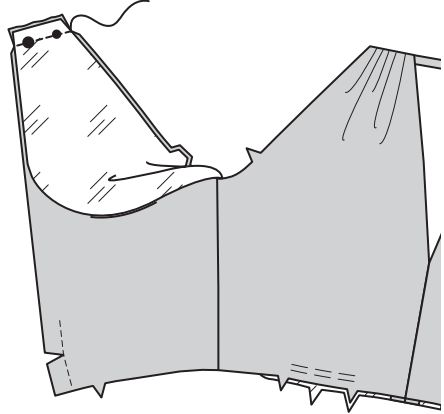
22. REINFORCE back lining through small dot on center back. Clip to dot.



23. Keeping back section free, stitch bodice back lining to bodice front lining at sides.



24. With RIGHT sides together, pin back lining to bodice back at upper edge, matching small and large dot. Adjust gathers on bodice back. Baste; stitch upper edge. Trim seam.



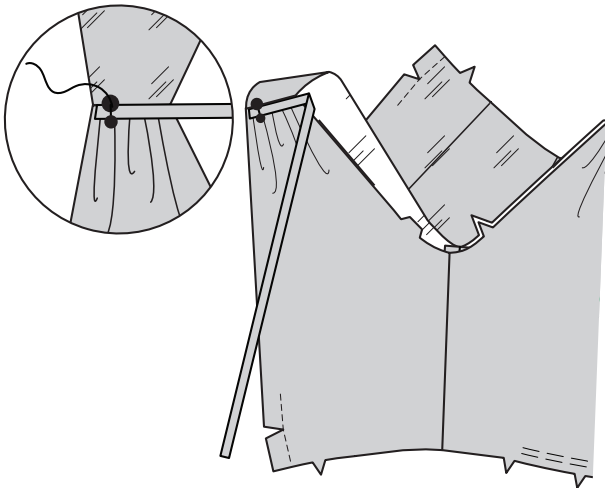
25. Fold TIE END (4) in half lengthwise, RIGHT sides together. Stitch in a 3/8"(1cm) seam, leaving end with dots free; trim seam.



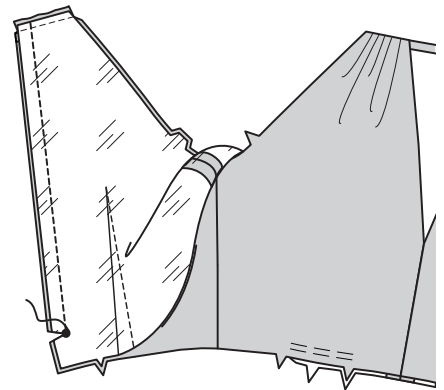
26. Turn tie end RIGHT side out; press. Baste raw edges.



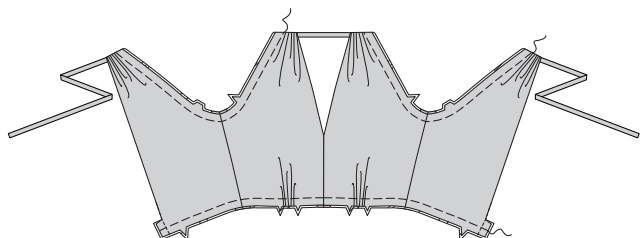
27. Open out lining on upper edge of bodice back. On outside, pin one tie end section to upper edge of each bodice back, matching small and large dots, having raw edges even. Baste.



28. With RIGHT sides together, pin lining to bodice back, matching large dots. Stitch back edge, from upper edge to dot; trim seam.

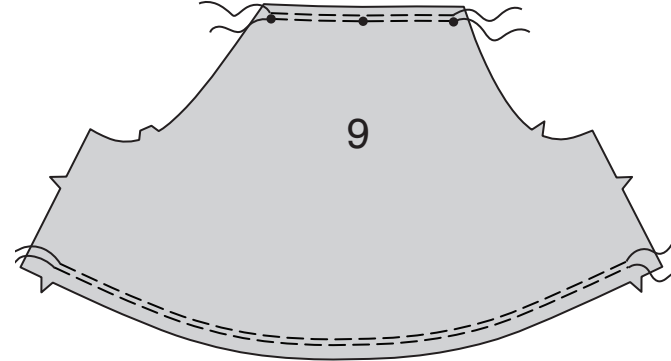


29. Turn lining to inside; turning tie ends out. Baste armhole edges together, matching seams. Pin lower edges together, matching centers and seams. Adjust gather in bodice front between notches. Baste raw edges together.

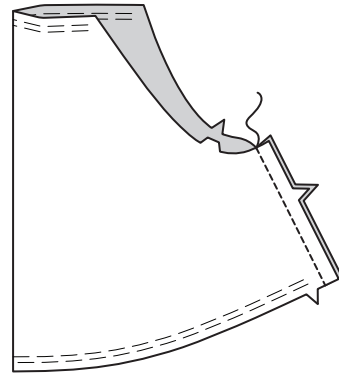


SLEEVE AND SLEEVE STAY

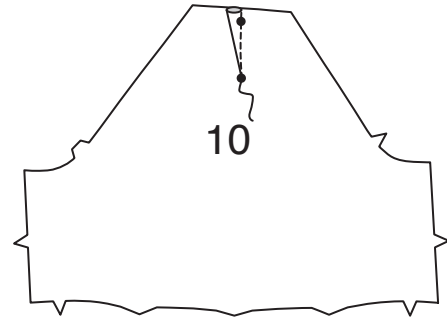
30. GATHER upper edge of SLEEVE (9) between outer small dots. GATHER lower edge of sleeve between notches.



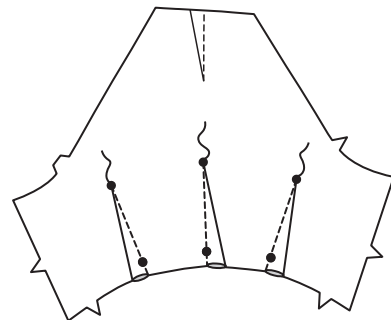
31. Stitch sleeve underarm seam.



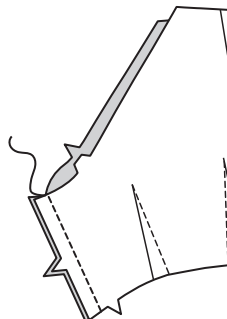
32. To make upper DART in SLEEVE STAY (10), with RIGHT sides together, bring broken lines together, matching small dots. Stitch along broken line from raw edge to point. Press dart toward back of sleeve.



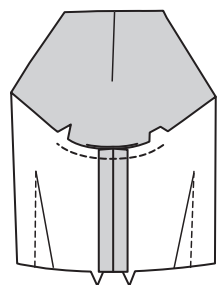
33. Stitch lower DARTS. Press side front and center dart toward front of sleeve. Press side back dart toward back of sleeve.



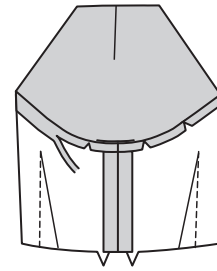
34. Stitch underarm seam of sleeve stay.



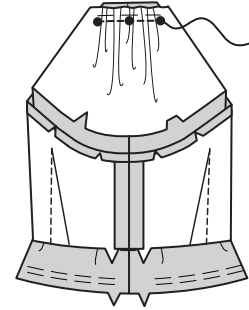
35. STAYSTITCH underarm edge of sleeve stay below notches.



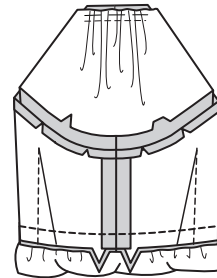
36. Press under 5/8"(1.5cm) on armhole edge of sleeve stay. Trim pressed edge to 3/8"(1cm), clipping where necessary.



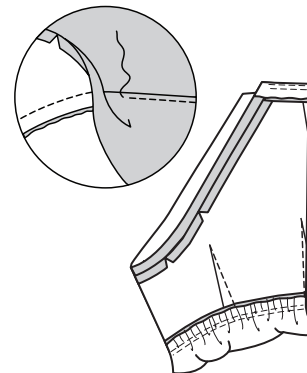
37. With RIGHT sides together, pin sleeve stay to sleeve, matching seams and dots. Adjust gathers on upper edge of sleeve; baste. Stitch between end dots; trim seams.



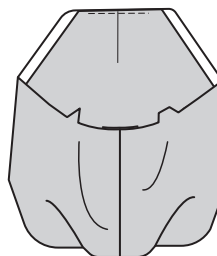
38. Pin stay to lower edge of sleeve, matching notches and seams, having raw edges even. Adjust gathers; baste. Stitch lower edge; trim seam.



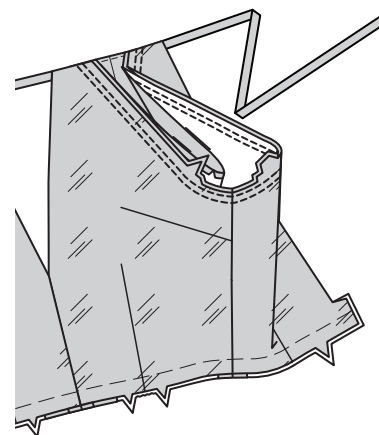
39. UNDERSTITCH upper and lower edge of sleeve stay as far as possible.



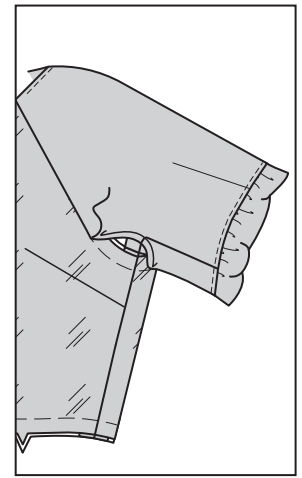
40. Turn sleeve, RIGHT side out; press.



41. Keeping sleeve stay free, pin sleeve to bodice armhole edge, RIGHT sides together, matching notches and underarm seams. Baste. Stitch. Stitch again 1/4"(6mm) away in seam allowance. Trim close to second stitching. Press seam flat. Turn seam toward sleeve.



42. Pin pressed edge of sleeve stay just over armhole seam, matching notches and seams. Adjust ease. SLIPSTITCH in place.

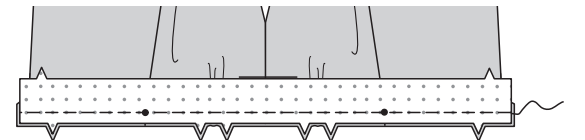


WAISTBAND

43. STAYSTITCH lower edge of interfaced WAISTBAND (11) section. (Uninterfaced waistband section will be used as facing.)



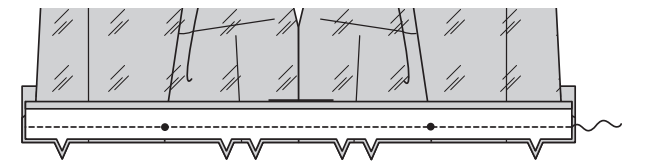
44. With RIGHT sides together, pin waistband to lower edge of bodice, matching notches, centers and small dots to side seams. Baste.



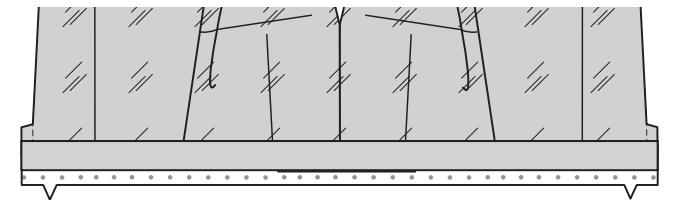
45. Press under 5/8"(1.5cm) on lower edge of waistband FACING (11). Trim pressed edge to 3/8"(1cm).



46. With RIGHT sides together, pin waistband facing to waistband (over bodice), matching notches, centers and small dots. Baste. Stitch through all thicknesses. Trim seams.

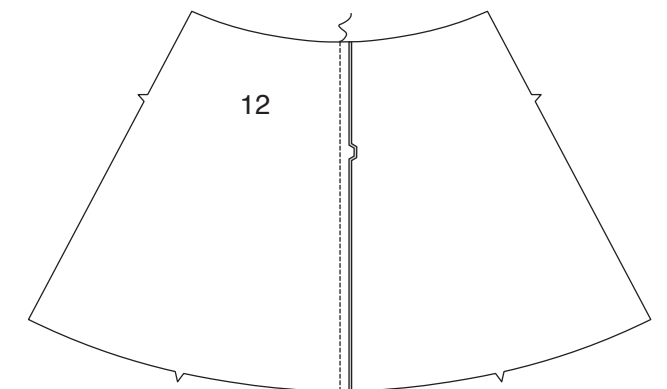


47. Turn facing and waistband down; press.

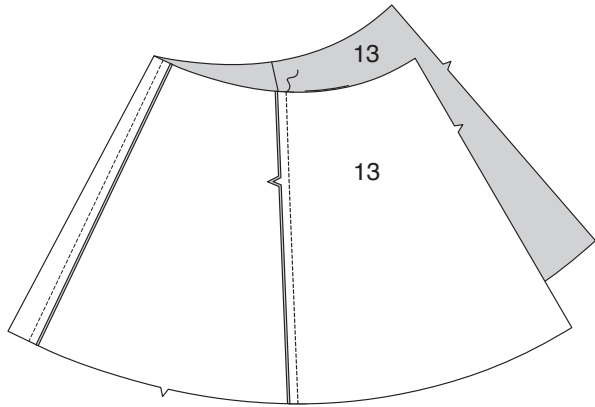


SKIRT

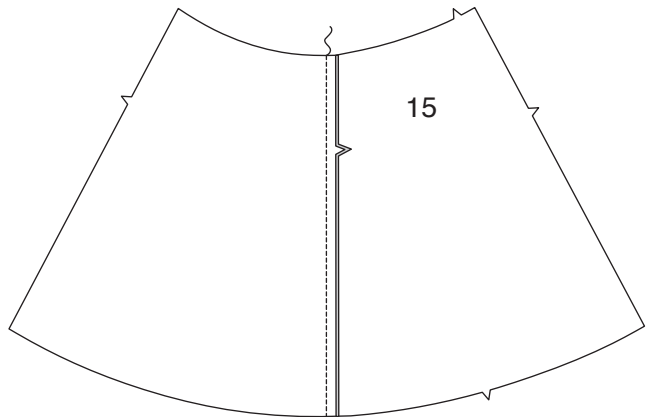
48. Pin SKIRT FRONT (12) sections, RIGHT sides together. Stitch center front seam. Press seams toward right front.



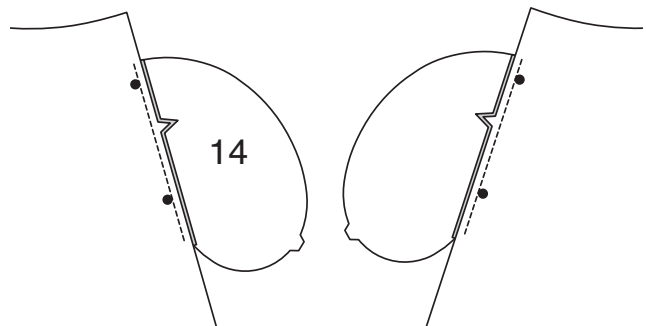
49. Pin two SKIRT SIDE FRONT AND SIDE BACK (13) sections to each side of skirt front. Stitch; press seams toward center front.



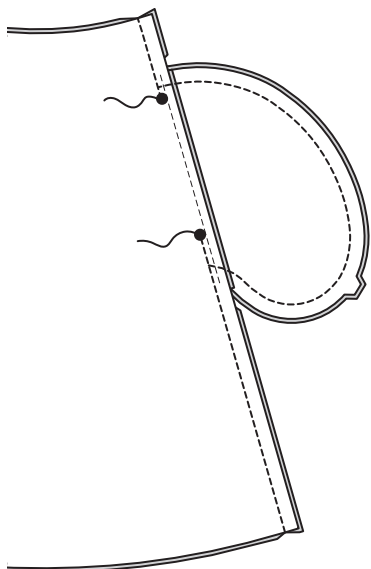
50. Pin one remaining skirt side front and side back section to each side of SKIRT BACK (15), matching notches. Stitch; press seams toward center back.



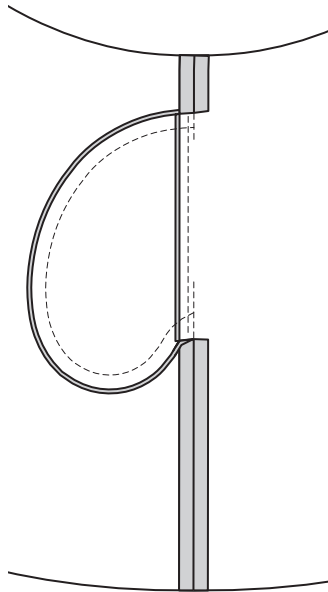
51. Stitch one POCKET (14) section to skirt side front and side back at each side in 3/8" (1cm) seam. Press seams toward pockets.



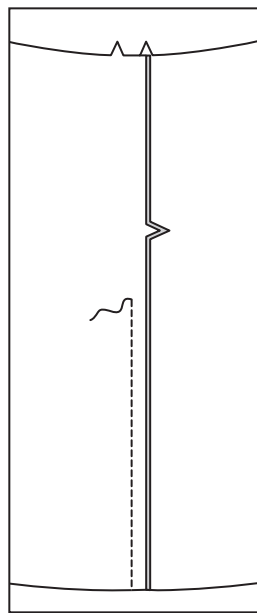
52. Stitch front to back at sides, RIGHT sides together, leaving open between large dots. Stitch pocket edges together to side seams.



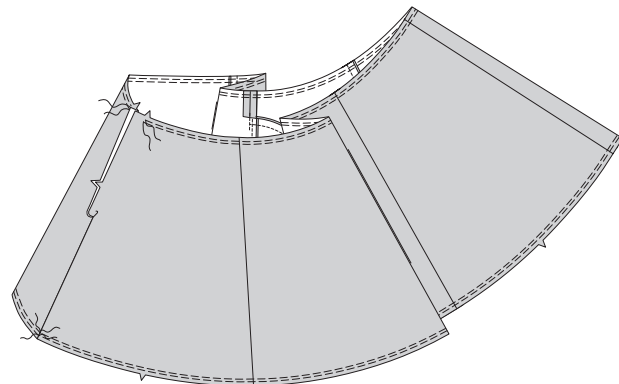
53. Clip back seam allowances above and below pockets. Turn pockets toward front along seamlines; press.



54. Stitch center back seam on skirt back, from lower edge to 3" (7.5cm) below notch.

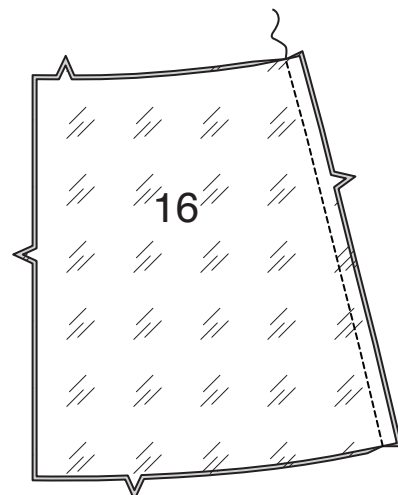


55. GATHER upper edge of skirt between notches. GATHER lower edge of skirt.

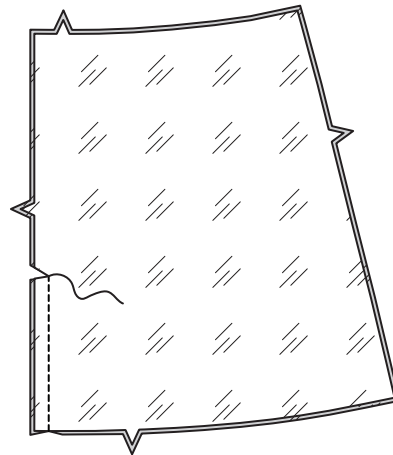


SKIRT LINING

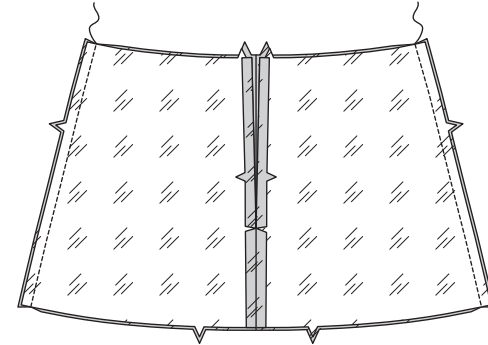
56. For front, pin two SKIRT LINING (16) sections, RIGHT sides together, matching notches. Stitch center front seam.



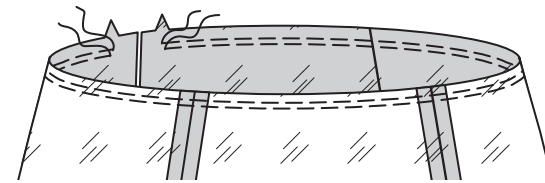
57. For back, pin two remaining skirt lining sections, RIGHT sides together, matching notches. Stitch center back seam, from lower edge to 3" (7.5cm) below notch; clip to stitching at end of opening.



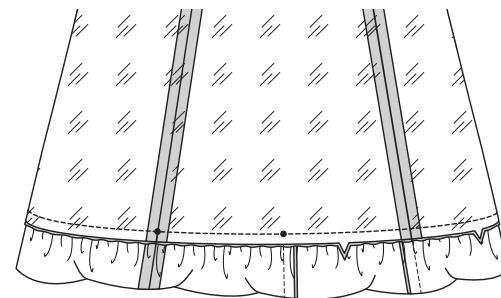
58. Stitch back lining to front lining at sides.



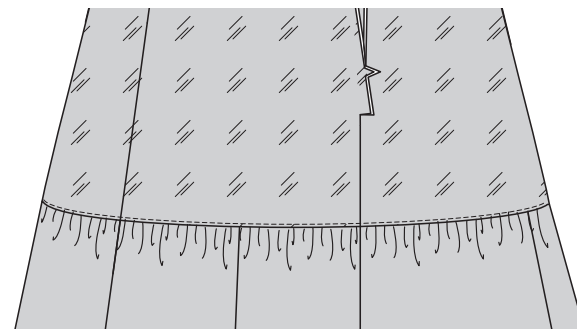
59. GATHER upper edge of skirt lining between notches.



60. With RIGHT sides together, pin lining to lower edge of skirt, matching center backs, center fronts and side seams to small dots. Adjust gathers; baste. Stitch lower edge. Turn seams toward lining.



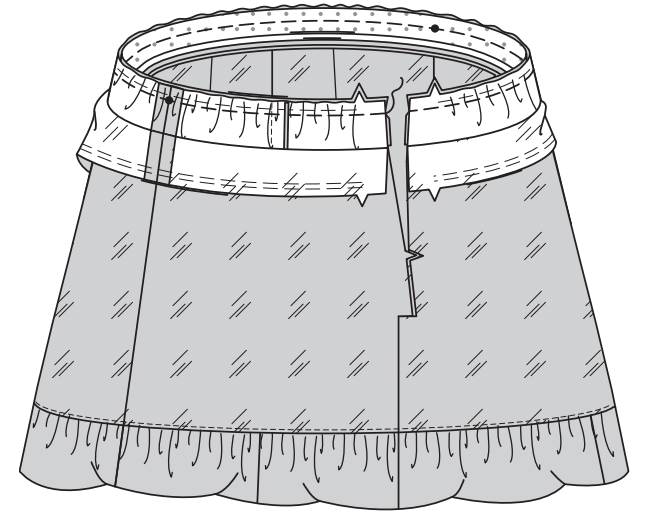
61. UNDERSTITCH lining seam.



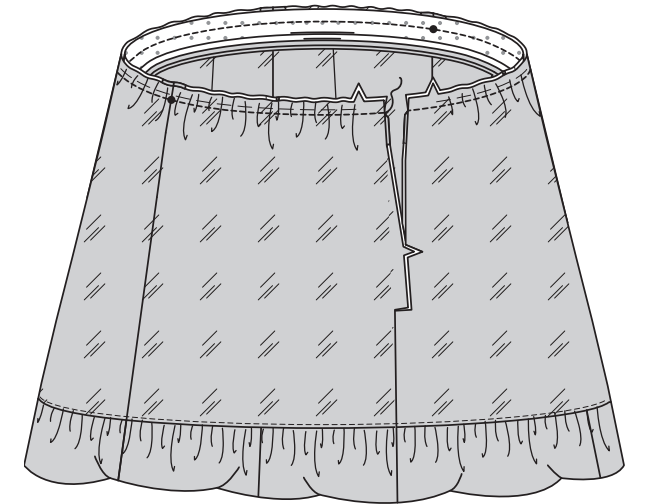
62. Turn skirt RIGHT side out; press.



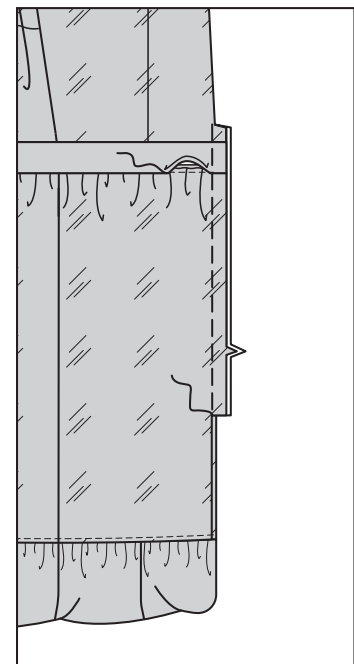
63. Keeping skirt lining and waistband facing free, pin skirt to lower edge of waistband, RIGHT sides together, matching centers and side seams to small dots. Adjust gathers; baste.



64. Pin skirt lining to skirt, wrong sides together, matching centers and side seams to small dots. Adjust gathers; baste. Stitch through all layers; trim seams.

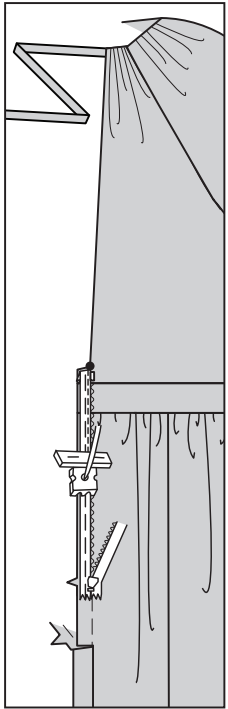


65. Turn seams toward waistband, turning skirt/lining down. Pin pressed edge of waistband facing just over skirt seam. SLIPSTITCH pressed edge of waistband facing over seam. Baste back edges together.

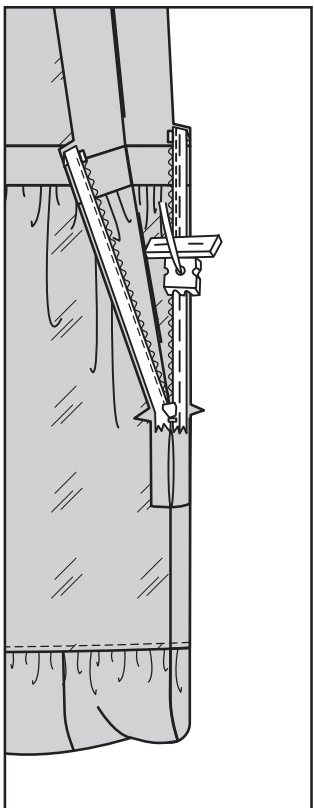


INVISIBLE ZIPPER

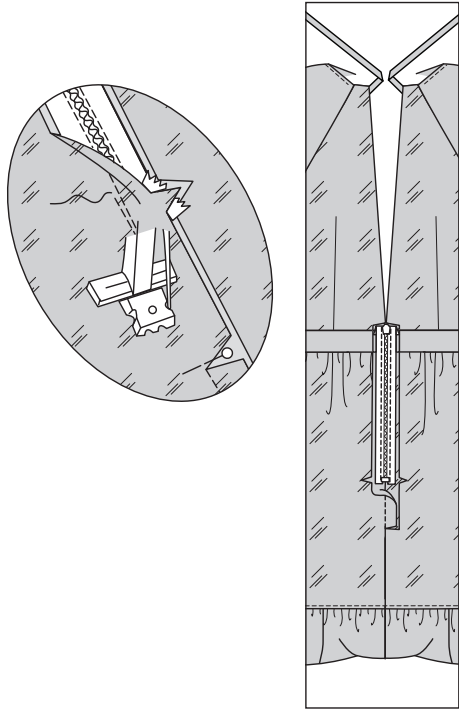
66. Open the zipper and press the tape using a cool iron. On OUTSIDE, pin RIGHT side of the zipper face down on the RIGHT side of the zipper opening. Have the coil along the seam line, the tape within the seam allowance and the top stop 1/8”(3mm) below back bodice dot, as shown. Turn in upper end of zipper. Hand-baste along center of the tape. Position zipper foot at the top of the zipper with RIGHT groove of the foot over coil. Stitch along tape to the notch. Back-stitch to reinforce.



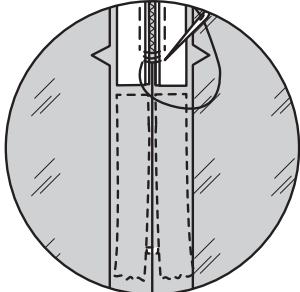
67. Pin the remaining half of the zipper to the LEFT side of the zipper opening in same manner. Make sure the upper and lower edges of the garment are even. Hand-baste along the center of the tape. Position zipper foot at the top of the zipper with LEFT groove over the coil. Stitch along tape to the notch. Back-stitch to reinforce.



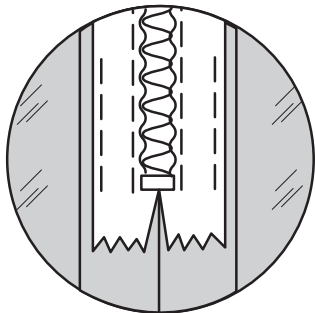
68. Close zipper and check that it is invisible from the OUTSIDE. Pull the free ends of the zipper tape away from the seam allowance. Pin remaining center back seam together below zipper. Position zipper foot all the way to the LEFT so the needle goes down through the outer notch of the foot. Start stitching seam 1/4”(6mm) above lowest stitch and slightly to the LEFT. Stitch remainder of seam. If you prefer, open out each seam allowance at end of zipper and stitch tape to seam allowance.



69. If the zipper is longer than the opening, using a strong thread, hand-sew a few small stitches across ends of coils at end of opening. Trim away lower end of zipper tape to within 5/8”(1.5cm) of hand-stitches.

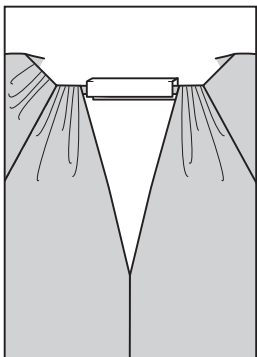
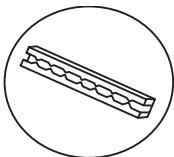


70. If you prefer, open out each seam allowance at end of zipper and stitch tape to seam allowance.



FINISHING

71. Apply Metal Teeth Crimp Clasp or Screw in Strap End to front strap, centering decoration, as shown.



FRANÇAIS

PLANS DE COUPE



Indique: pointe de poitrine, ligne de taille, de hanches et/ou avantbras. Ces mesures sont basées sur la circonférence du vêtement fini. (Mesures du corps + Aisance confort + Aisance mode) Ajuster le patron si nécessaire.

Les lignes épaisses sont les LIGNES DE COUPE, cependant, des rentrés de 1.5cm sont compris, sauf si indiqué différemment. Voir EXPLICATIONS DE COUTURE pour largeur spécifiée des rentrés.

Choisir le(s) plan(s) de coupe selon modèle/largeur du tissu/taille. Les plans de coupe indiquent la position approximative des pièces et peut légèrement varier selon la taille du patron.

Les plans de coupe sont établis pour tissu avec/sans sens. Pour tissu avec sens, pelucheux ou certains imprimés, utiliser un plan de coupe AVEC SENS.

ENDROIT DU PATRON	ENVERS DU PATRON	ENDROIT DU TISSU	ENVERS DU TISSU

S/T = SIZE(S)/TAILLE(S)
***** = WITH NAP/AVEC SENS
S/L = SELVAGE(S)/LISIÈRE(S)
AS/TT = ALL SIZE(S)/TOUTES TAILLE(S)
****** = WITHOUT NAP/SANS SENS
F/P = FOLD/PLIURE
CF/PT = CROSSWISE FOLD/PLIURE TRAME

Disposer le tissu selon le plan de coupe. Si ce dernier indique...

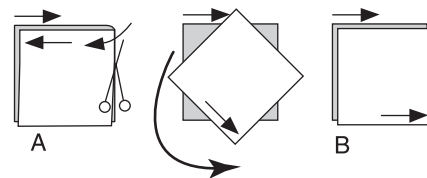
DROIT FIL—A placer sur le droit fil du tissu, parallèlement aux lisières ou au pli. Pour plan "avec sans," les flèches seront dirigées dans la même direction. (Pour fausse fourrure, placer la pointe de la flèche dans le sens descendant des poils.)

SIMPLE EPAISSEUR—Placer l'endroit sur le dessus. (Pour fausse fourrure, placer le tissu l'endroit dessous.)

DOUBLE EPAISSEUR

AVEC PLIURE—Placer endroit contre endroit.

***** **SANS PLIURE**—Plier le tissu en deux sur la TRAME, endroit contre endroit. Couper à la pliure, de lisière à lisière (A). Placer les 2 épaisseurs dans le même sens du tissu, endroit contre endroit (B).



PLIURE—Placer la ligne du patron exactement sur la pliure NE JAMAIS COUPER sur cette ligne.

Si la pièce se présente ainsi...

- Couper d'abord les autres pièces, réservant du tissu (A). Plier le tissu et couper la pièce sur la pliure, comme illustré (B).



- ★ Couper d'abord les autres pièces, réservant pour lapièce en question. Déplier le tissu et couper la pièce sur une seule épaisseur.

Couper régulièrement les pièces le long de la ligne de coupe indiquée pour la taille choisie, coupant les crans vers l'extérieur.

Marquer repères et lignes avant de retirer le patron. (Pour fausse fourrure, marquer sur l'envers du tissu.)

NOTE: Les parties encadrées avec des pointillées sur les plans de coupe (a! b! c!) représentent les pièces coupées d'après les mesures données.

EXPLICATIONS DE COUTURE

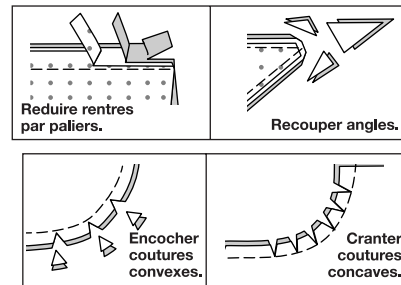
RENTRES DE COUTURE COMPRIS

Les rentrés sont tous de 1.5cm, sauf si indiqué différemment.

LEGENDE DES CROQUIS

Endroit	Envers	Entoilage
Doublure	Triplure	

Au fur et à mesure de l'assemblage, repasser les rentrés ensemble puis ouverts, sauf si contre indiqué. Pour aplatir les coutures, cranter les rentrés où nécessaire.



GLOSSAIRE

Les termes de couture imprimés en **CARACTÈRES GRAS** ont l'aide d'une Vidéo de Tutoriel de couture. Scanner le CODE QR pour regarder les vidéos :

PINCE – reportez-vous à la vidéo **Pinc**es : “coudre une pince plate”.

SOUTENIR/FRONCER – reportez-vous à la vidéo **Froncer** : “coudre deux rangées de fronces”.

PIQUER LE BORD – reportez-vous à la vidéo **Points à la machine** : “comment piquer le bord”.

RENFORCER – reportez-vous à la vidéo **Points à la machine** : “comment renforcer les coutures”.

PIQÛRE DE SOUTIEN - reportez-vous à la vidéo **Points à la machine** : “comment faire une piqûre de soutien”.

SOUS-PIQUER – reportez-vous à la vidéo **Points à la machine** : “comment faire une sous-piqûre”.

FERMETURE À GLISSIÈRE INVISIBLE - reportez-vous à la vidéo **Fermetures à glissière** : “coudre une fermeture invisible”.

POINTS COULÉS - Glissez l'aiguille dans le bord plié et faites un point au-dessous dans le tissu, ne prenant qu'un seul fil.

TUTORIELS DE COUTURE



Développez vos compétences en regardant des vidéos courtes et faciles à suivre sur [simplicity.com/sewingtutorials](https://www.simplicity.com/sewingtutorials).

LES PIÈCES DU PATRON SERONT IDENTIFIÉES PAR DES NUMÉROS LA PREMIÈRE FOIS QU'ELLES SERONT UTILISÉES.

PIQUER LES COUTURES ENDROIT CONTRE ENDROIT, SAUF INDIQUÉ DIFFÉREMMENT.

