

- 1 BODICE FRONT - A,B
2 BODICE SIDE FRONT - A,B
3 BODICE BACK - A,B
4 BODICE SIDE BACK - A,B
5 FRONT FACING - A,B
6 BACK FACING - A,B
7 BODICE FRONT LINING - A,B
8 BODICE SIDE FRONT LINING - A,B
9 BODICE BACK LINING - A,B
10 BODICE SIDE BACK LINING - A,B
11 SKIRT FRONT - A,B
12 SKIRT BACK - A,B
13 LOWER FRONT INTERFACING - A,B
14 LOWER BACK INTERFACING - A,B
15 BACK INTERFACING - A,B
16 SKIRT RIGHT BACK LINING - A,B
17 SKIRT LEFT BACK LINING - A,B
18 BELT - A,B
19 SLEEVE - B
20 SLEEVE INTERFACING - B
- 1 CORSAGE DEVANT - A, B
2 CORSAGE CÔTÉ DEVANT - A, B
3 CORSAGE DOS - A, B
4 CORSAGE CÔTÉ DOS - A, B
5 PAREMENTURE DEVANT - A, B
6 PAREMENTURE DOS - A, B
7 DOUBLURE CORSAGE DEVANT - A, B
8 DOUBLURE CORSAGE CÔTÉ DEVANT - A, B
9 DOBLURE CORSAGE DOS - A, B
10 DOUBLURE CORSAGE CÔTÉ DOS - A, B
11 JUPE DEVANT - A, B
12 JUPE DOS - A, B
13 ENTOILAGE DEVANT INFÉRIEUR - A, B
14 ENTOILAGE DOS INFÉRIEUR - A, B
15 ENTOILAGE DOS - A, B
16 DOUBLURE JUPE DOS DROIT - A, B
17 DOUBLURE JUPE DOS GAUCHE - A, B
18 CEINTURE - A, B
19 MANCHE - B
20 ENTOILAGE DE MANCHE - B

BODY MEASUREMENTS / MESURES DU CORPS

	MISSES/JEUNE FEMME									
Sizes/Tailles	4	6	8	10	12	14	16	18	20	22
Bust (ins)	29½	30½	31½	32½	34	36	38	40	42	44
Waist	22	23	24	25	26½	28	30	32	34	37
Hip	31½	32½	33½	34½	36	38	40	42	44	46
Bk. Wst Lgth.	15½	15½	15½	16	16¼	16½	16¾	17	17¼	17½
T. poitrine (cm)	75	78	80	83	87	92	97	102	107	112
T. taille	56	58	61	64	67	71	76	81	87	94
T. hanches	89	83	85	88	92	97	102	107	112	117
Nuque à taille	39	39.5	40	40.5	41.5	42	42.5	43	44	44

FABRIC CUTTING LAYOUTS

⊕ Indicates Bustline, Waistline, Hipline and/or Biceps. Measurements refer to circumference of Finished Garment (Body Measurement + Wearing Ease + Design Ease). Adjust Pattern if necessary.

Lines shown are CUTTING LINES, however, 5/8" (1.5cm) SEAM ALLOWANCES ARE INCLUDED, unless otherwise indicated. See SEWING INFORMATION for seam allowance.

Find layout(s) by Garment/View, Fabric Width and Size. Layouts show approximate position of pattern pieces; position may vary slightly according to your pattern size.

All layouts are for with or without nap unless specified. For fabrics with nap, pile, shading or one-way design, use WITH NAP layout.

RIGHT SIDE OF PATTERN	WRONG SIDE OF PATTERN	RIGHT SIDE OF FABRIC	WRONG SIDE OF FABRIC
-----------------------	-----------------------	----------------------	----------------------

S/T = SIZE(S)/TAILLE(S)
* = WITH NAP/AVEC SENS
S/L = SELVAGE(S)/LISIÈRE(S)
AS/TT = ALL SIZE(S)/TOUTES TAILLE(S)
** = WITHOUT NAP/SANS SENS
F/P = FOLD/PLIURE
CF/PT = CROSSWISE FOLD/PLIURE TRAME

Position fabric as indicated on layout. If layout shows...

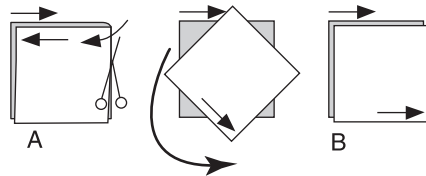
GRAINLINE—Place on straight grain of fabric, keeping line parallel to selvage or fold. ON “with nap” layout arrows should point in the same directions. (On Fur Pile fabrics, arrows point in direction of pile.)

SINGLE THICKNESS—Place fabric right side up. (For Fur Pile fabrics, place pile side down.)

DOUBLE THICKNESS

WITH FOLD—Fold fabric right sides together.

* **WITHOUT FOLD**—With right sides together, fold fabric CROSSWISE. Cut fold from selvage to selvage (A). Keeping right sides together, turn upper layer completely around so nap runs in the same direction as lower layer.



FOLD—Place edge indicated exactly along fold of fabric. NEVER cut on this line.

When pattern piece is shown like this...

• Cut other pieces first, allowing enough fabric to cut this piece (A). Fold fabric and cut piece on fold, as shown (B).

★ Cut piece only once. Cut other pieces first, allowing enough fabric to cut this piece. Open fabric; cut piece on single layer.

Cut out all pieces along cutting line indicated for desired size using long, even scissor strokes, cutting notches outward.

Transfer all markings and lines of construction before removing pattern tissue. (Fur Pile fabrics, transfer markings to wrong side.)

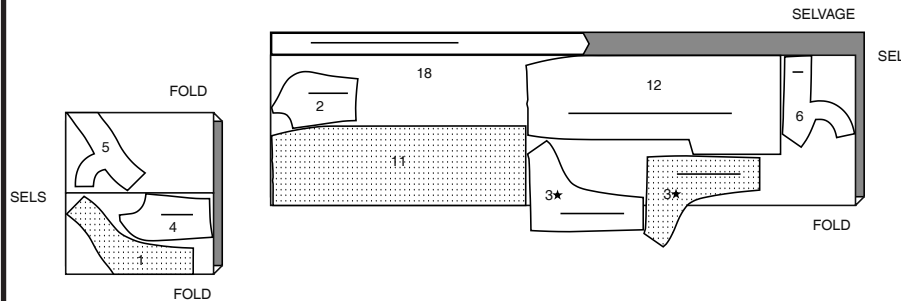
NOTE: Broken-line boxes (a! b! c!) in layouts represent pieces cut by measurements provided.

DRESS AND BELT A / ROBE ET CEINTURE A

PIECES 1 2 3 4 5 6 11 12 18

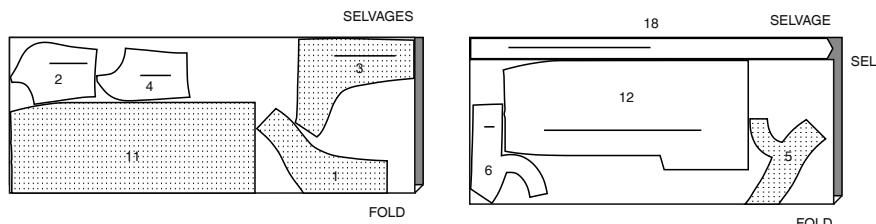
45" (115CM)*

S/T 4 6 8 10 12 14



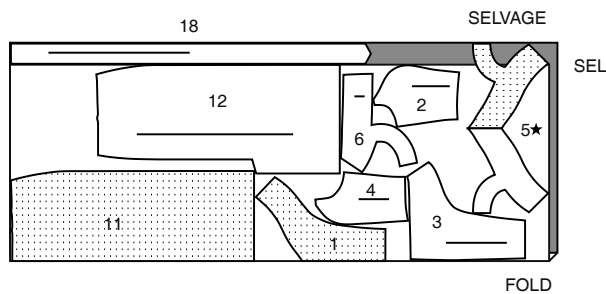
45" (115CM)*

S/T 16 18 20 22



60" (150CM)*

AS/TT

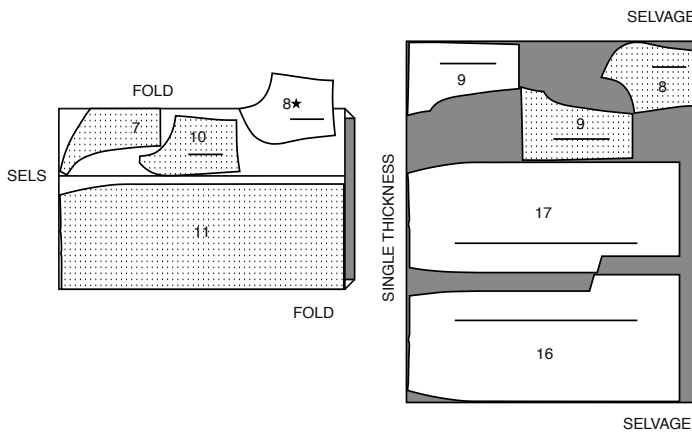


LINING / DOUBLURE

PIECES 7 8 9 10 11 16 17

45" (115CM)*

AS/TT

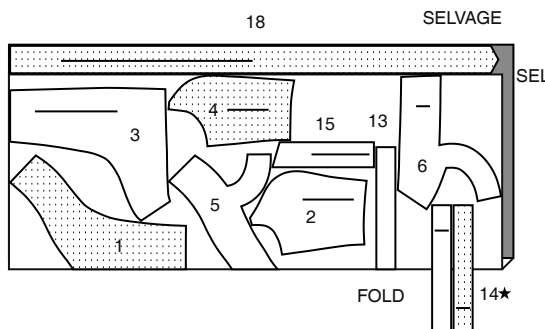


INTERFACING / ENTOILAGE

PIECES 1 2 3 4 5 6 13 14 15 18

45" (115CM)**

AS/TT

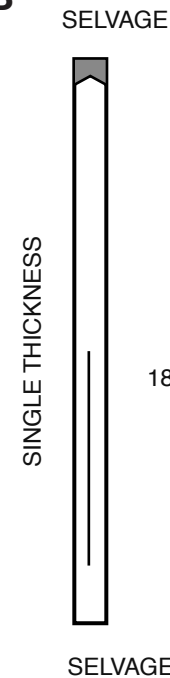


BELT BACKING A,B SANGLE POUR CEINTURE A, B

PIECE 18

54" (140CM)

AS/TT

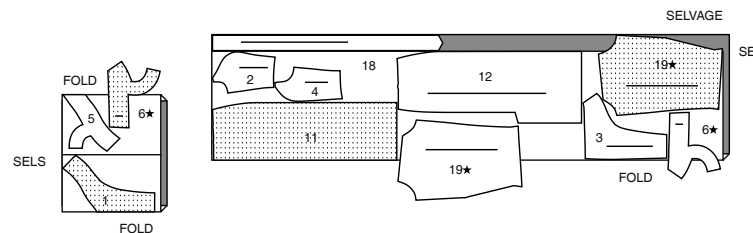


DRESS AND BELT B / ROBE ET CEINTURE B

PIECES 1 2 3 4 5 6 11 12 18 19

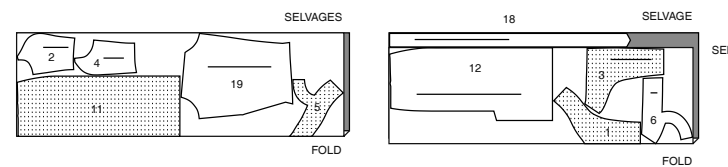
45" (115CM)*

S/T 4 6 8 10 12 14



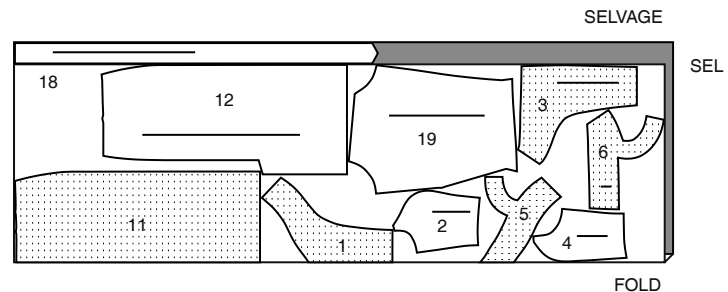
45" (115CM)*

S/T 16 18 20 22



60" (150CM)*

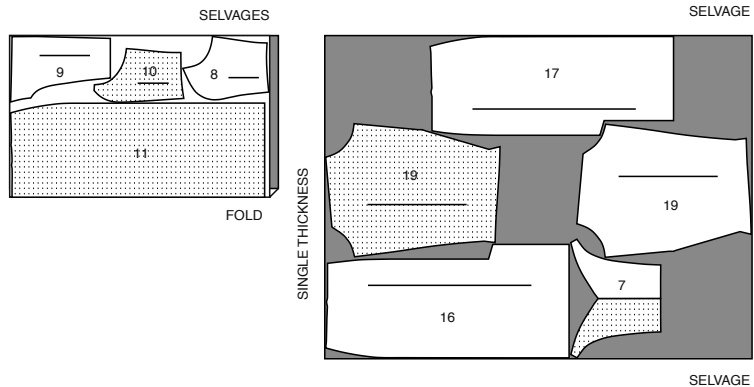
AS/TT



LINING / DOUBLURE

PIECES 7 8 9 10 11 16 17 19

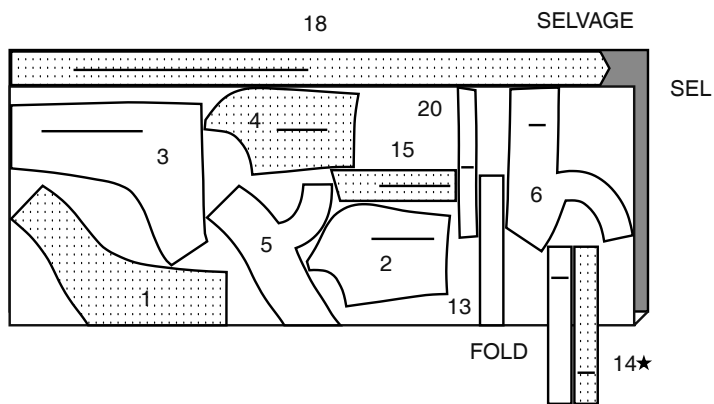
45" (115CM)*
AS/TT



INTERFACING / ENTOILAGE

PIECES 1 2 3 4 5 6 13 14 15 18 20

45" (115CM)**
AS/TT



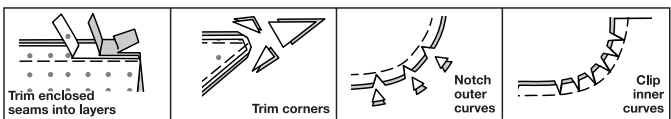
SEWING INFORMATION

5/8" (1.5cm) SEAM ALLOWANCES ARE INCLUDED,
(unless otherwise indicated)

ILLUSTRATION SHADING KEY

Right Side	Wrong Side	Interfacing	Lining	Underlining

Press as you sew. Press seams flat, then press open, unless otherwise instructed. Clip seam allowances, where necessary, so they lay flat.



GLOSSARY

Sewing methods in **BOLD TYPE** have Sewing Tutorial Video available. Scan QR CODE to watch videos:

CATCH STITCH – See Hand Stitching: “hand sewing a catch stitch” video.

FLAT DART – See Darts: “sewing flat dart” video.

INVISIBLE ZIPPER – See Zippers: “sewing an invisible zipper” video.

SET IN SLEEVE – See Armholes/Sleeves: “sewing a set in sleeve” video.

STAYSTITCH – See Machine Stitches: “how to do stay stitching” video.

TRIM SEAM – See Seams: “how to trim, clip and layer seams” video.

UNDERSTITCH – See Machine Stitches: “how to understitch” video.

SEWING TUTORIALS



Build your skills viewing short, easy-to-follow videos at
[simplicity.com/sewingtutorials](https://www.simplicity.com/sewingtutorials)

PATTERN PIECES WILL BE IDENTIFIED BY NUMBERS THE FIRST TIME THEY ARE USED.

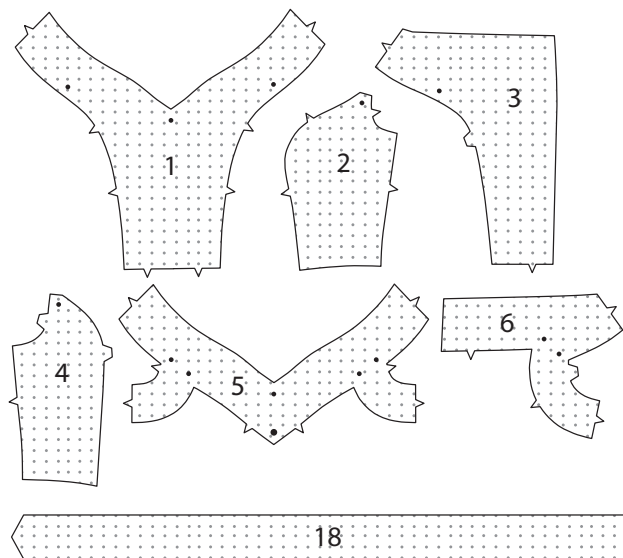
STITCH 5/8" (1.5CM) SEAMS WITH RIGHT SIDES TOGETHER UNLESS OTHERWISE STATED.

DRESS A, B

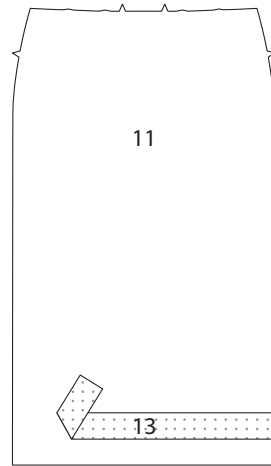
NOTE: Trim 1-1/2" (3.8cm) from lower edge of **SKIRT FRONT (11) LINING**, and additionally for **View B**, trim 1" (2.5cm) from lower edge of **SLEEVE (19) LINING** before stitching seams.

INTERFACING

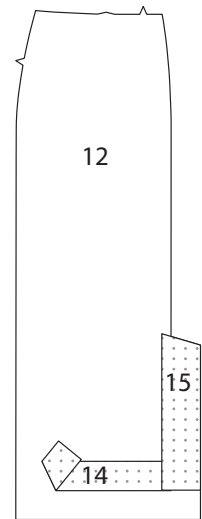
1. Pin interfacing to **WRONG** side of **BODICE FRONT (1)**, **BODICE SIDE FRONT (2)**, **BODICE BACK (3)**, **BODICE SIDE BACK (4)**, **FRONT FACING (5)**, **BACK FACING (6)**, and **BELT (18)**. Fuse in place following manufacturer's directions.



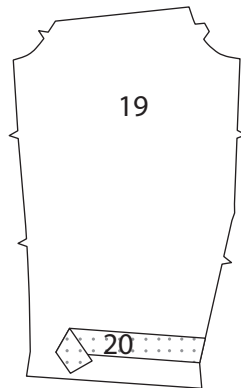
2. Pin **LOWER FRONT INTERFACING (13)** to **WRONG** side of **SKIRT FRONT (11)** 2" (5cm) above lower raw edge. Fuse in place following manufacturer's directions.



3. Pin **BACK INTERFACING (15)** to vent of **SKIRT BACK (12)** with edges even, and **LOWER BACK INTERFACING (14)** to skirt back 2" (5cm) above lower raw edge, lapping back interfacing at center back, as shown. Fuse in place following manufacturer's directions.

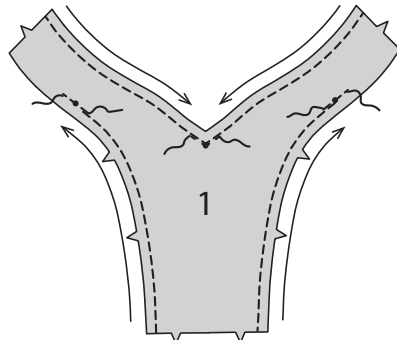


4. FOR VIEW B – Pin **SLEEVE INTERFACING (20)** to **WRONG** side of **SLEEVE (19)** 1-1/2" (3.8cm) above lower raw edge. Fuse in place following manufacturer's directions.

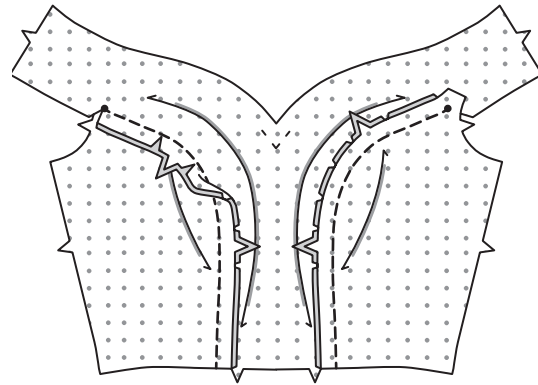


BODICE

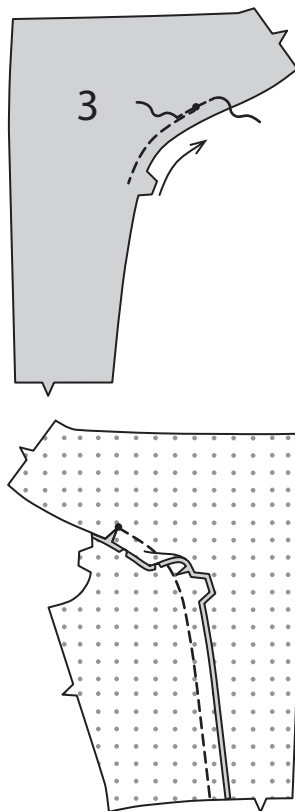
5. To **STAYSTITCH** neckline and side front edge of **BODICE FRONT (1)**, stitch 1/2" (1.3cm) from cut edge in direction of arrows. This stitching stays in permanently to prevent stretching on curved edges. (Shown only in the first illustration.)
To reinforce front neckline and side front edge of bodice front at small dots, stitch along seam line for about 1" (2.5cm) each side of small dots, stitching through dots, as shown.



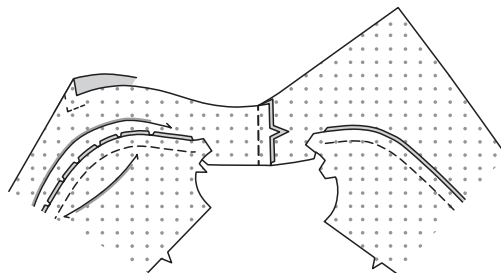
6. Reinforce side front edge of **BODICE SIDE FRONT (2)** in the same manner. With **RIGHT** sides together and raw edges even, pin bodice front to bodice side front along side front edges, matching small dots and notches clipping front as needed. Stitch. Press seam toward front. Clip seam allowance to stitching at the small dot.



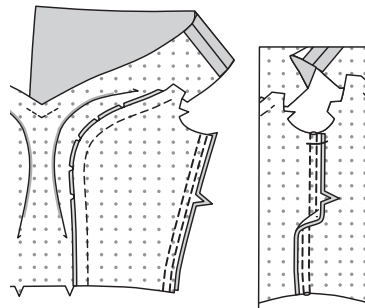
7. STAYSTITCH side back of **BODICE BACK (3)**. Reinforce side back edges of bodice back and **BODICE SIDE BACK (4)** at the small dots in the same manner as for bodice front. With **RIGHT** sides together and raw edges even, pin bodice back to bodice side back along side back edges, matching small dots and notches. Stitch. Press seam toward back. Clip seam allowance to stitching at the small dot.



8. Stitch bodice front to bodice back at shoulder edges.

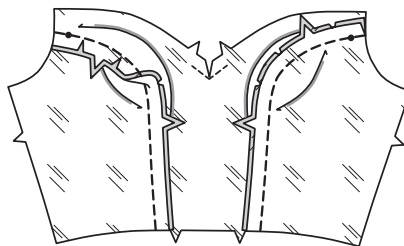
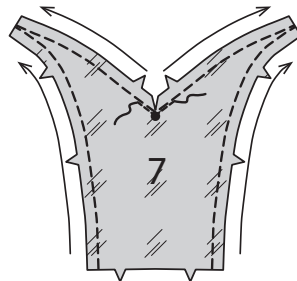


9. FOR VIEW B – Stitch bodice front to bodice back at side edges. To form casing for boning, stitch again 3/8" (1cm) from first stitching within the seam allowance. Press seam toward back. Baste in place along upper seamline.

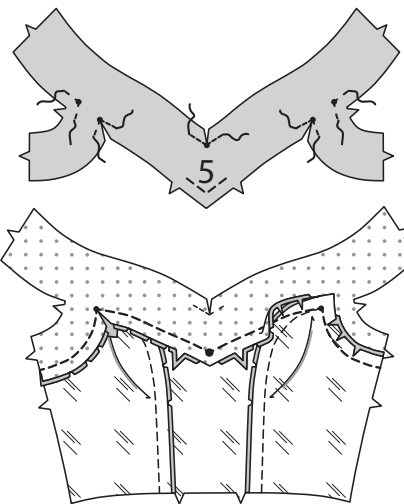


BODICE LINING

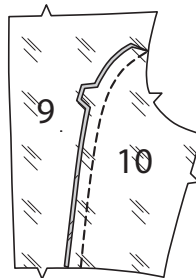
10. Reinforce side front edges of **BODICE FRONT LINING (7)** and **BODICE SIDE FRONT LINING (8)** at the small dots and large dot at center front in the same manner as for bodice front. **STAYSTITCH** in same manner as front. With **RIGHT** sides together and raw edges even, pin bodice front lining to bodice side front lining along side front edges, matching small dots and notches clipping front as needed. Stitch. Press seam toward front. Clip seam allowance to stitching at the small and large dot.



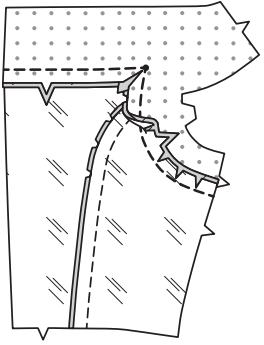
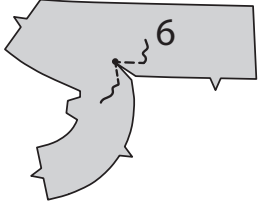
11. Reinforce **FRONT FACING (5)** at the small dots and large dot at center front in the same manner as for bodice front. Clip seam allowance to stitching at the small dots on lower edge of facing. With **RIGHT** sides together and raw edges even, pin upper edge of bodice front lining to lower edge of front facing, matching small dots, large dots, and notches. Stitch, pivoting with needle in fabric at dots. Press seam toward lining, pressing out the facing.



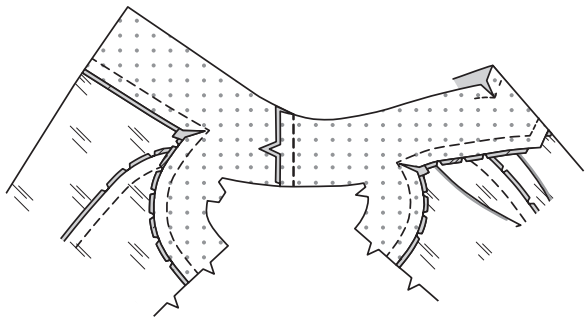
12. With **RIGHT** sides together and raw edges even, pin **BODICE BACK LINING (9)** to **BODICE SIDE BACK LINING (10)** along side back edges, matching notches. Stitch. Press seam toward back.



13. Reinforce BACK FACING (6) at the small dot in the same manner as for bodice front. Clip seam allowance to stitching at the small dot.
With RIGHT sides together and raw edges even, pin upper edge of bodice back lining to lower edge of back facing, matching small dots and notches. Stitch, pivoting with needle in fabric at dot. Press seam toward lining, pressing out the facing.

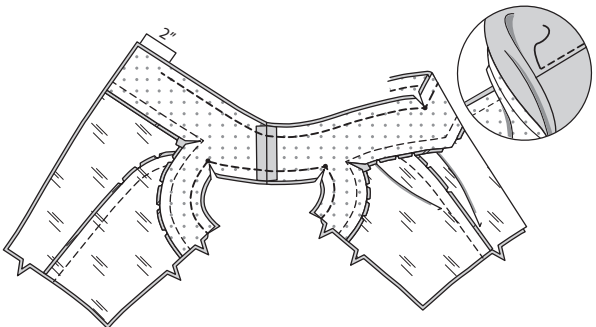


14. Stitch front facing to back facing at shoulder edges.

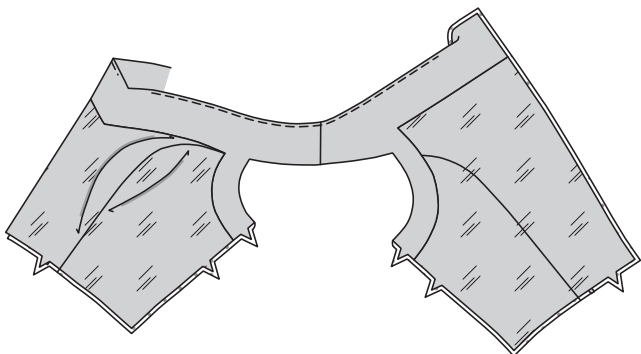


CONTINUE AS FOLLOWS FOR VIEW A

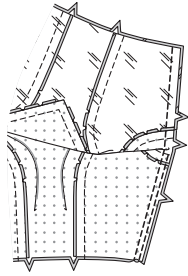
15. With RIGHT sides together and raw edges even, pin bodice to facing along upper edge, matching centers, seams, and notches. Stitch to within 2" (5cm) of back edges. To reinforce the seam at center front, stitch again along stitching lines. **TRIM SEAM.** **UNDERSTITCH** the facing to within 3" (5cm) of back edges.
With RIGHT sides together and raw edges even, pin facing/lining to bodice along armhole edges, matching seams, small dots, and notches. Stitch. **TRIM SEAM.**



16. Turn bodice RIGHT side out by pulling each back through shoulder and out one of the side opening edges, as shown; press.

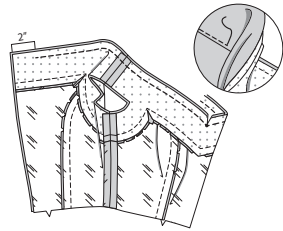


17. With RIGHT sides together and raw edges even, pin bodice and lining at sides, matching armhole seams. Stitch side edges together. To form casing for boning, stitch bodice again 3/8" (1cm) from first stitching within the seam allowance. Press seam toward back.

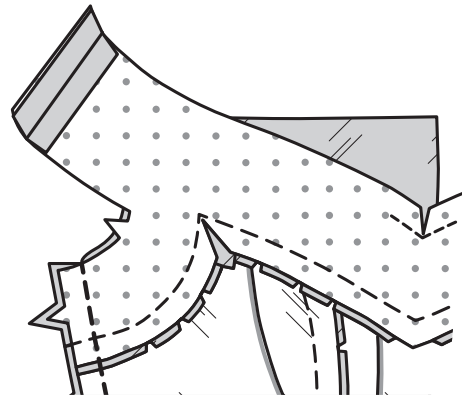


CONTINUE AS FOLLOWS FOR VIEW B

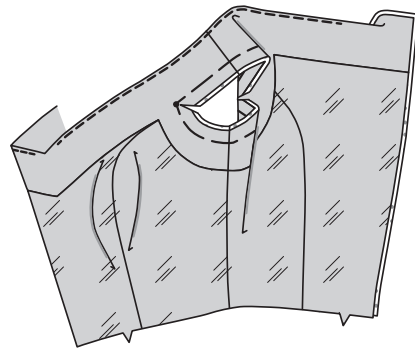
18. Stitch bodice front lining to bodice back lining at side edges.



19. With RIGHT sides together and raw edges even, pin bodice to facing along upper edge, matching centers, seams, and notches. Stitch to within 2" (5cm) of back edges. To reinforce the seam at center front, stitch again along stitching lines. **TRIM SEAM.** **UNDERSTITCH** the facing to within 3" (5cm) of back edges.

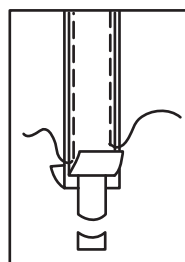


20. Pin bodice to facing/lining along armhole edges, matching seams and notches. Baste. Clip armhole edges to basting at small dots.

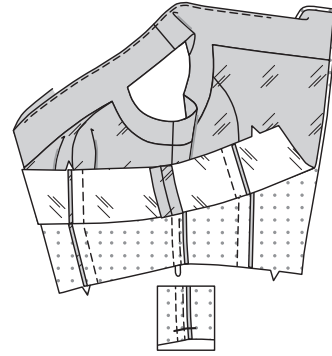


CONTINUE AS FOLLOWS FOR BOTH VIEWS

21. Cut two pieces of boning the length of stitched casing, excluding upper and lower seam allowances. Remove boning from casing.
Trim 1/4" (6mm) of boning from each end, curving ends, as shown.

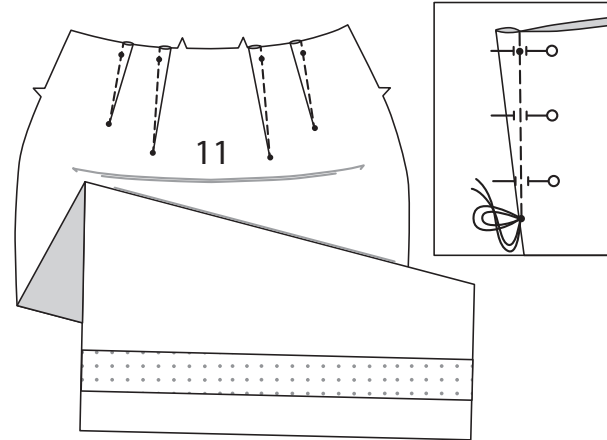


22. Insert boning between side seam allowances of bodice. Baste 5/8" (1.5cm) from lower edges of casing, being careful not to catch in boning.
Turn lining to INSIDE; press.

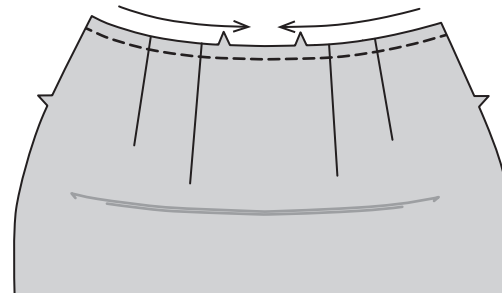


SKIRT

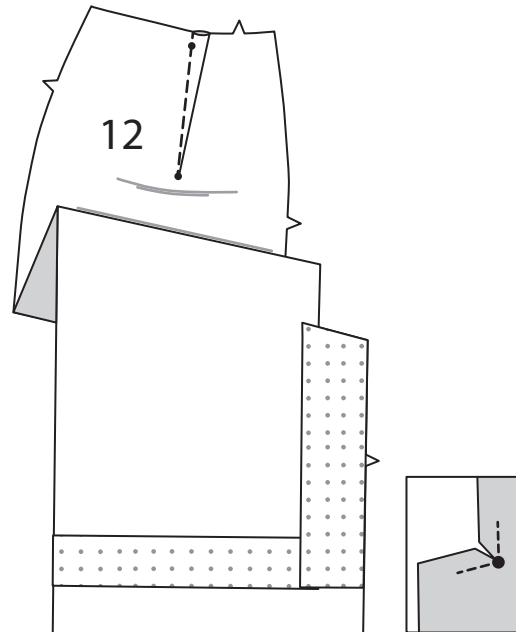
23. To make **FLAT DART(s)** in SKIRT FRONT (11), with RIGHT sides together, fold the fabric through the center of the dart, bringing broken lines and small dots together. On INSIDE, place pins at RIGHT angles to the broken lines. Stitch the dart from wide end to point.
Press the dart flat along the stitching to "blend" the stitches, then press dart toward center.
TIP – To prevent a "bubble" at the point, make the last few stitches right on the fold and leave the thread ends long enough to tie a knot. DO NOT back-stitch at the point.



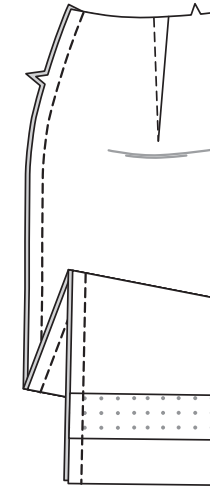
24. **STAYSTITCH** upper edge of skirt front in the direction of the arrows.



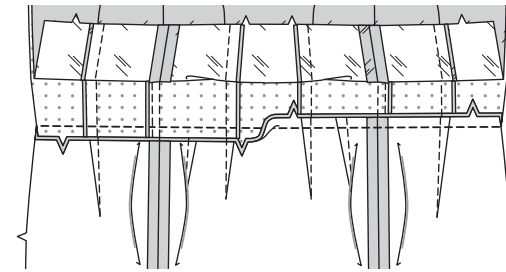
25. To reinforce center back of SKIRT BACK (12) sections at the large dot, stitch along seam line for about 1" (2.5cm) each side of large dot, stitching through dots, as shown. Slash to stitching at large dot.
Make **FLAT DART** in back sections. Press dart toward center.



26. Stitch skirt front to skirt back at side edges, matching notches.



27. Pull up lining.
With RIGHT sides together and raw edges even, pin lower edge of bodice to upper edge of skirt, matching centers, seam, and notches. Stitch. Press seam toward bodice.

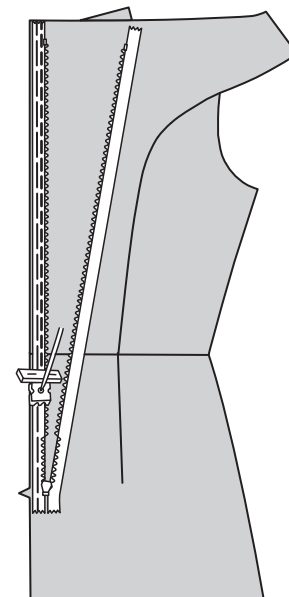


ZIPPER

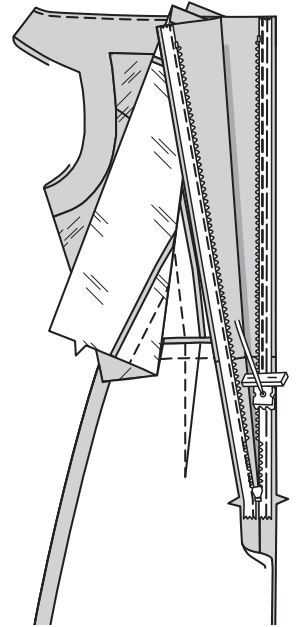
NOTE: The invisible zipper may be longer than the zipper opening and will be adjusted after the zipper is inserted.

NOTE: Stitch the invisible zipper using an invisible zipper foot. Before you begin, be sure to line up your needle with the center of the invisible zipper foot or you may break your needle. When the coils are to the LEFT of the raw edge use the LEFT groove and when the coils are to the RIGHT of the raw edge use the RIGHT groove.

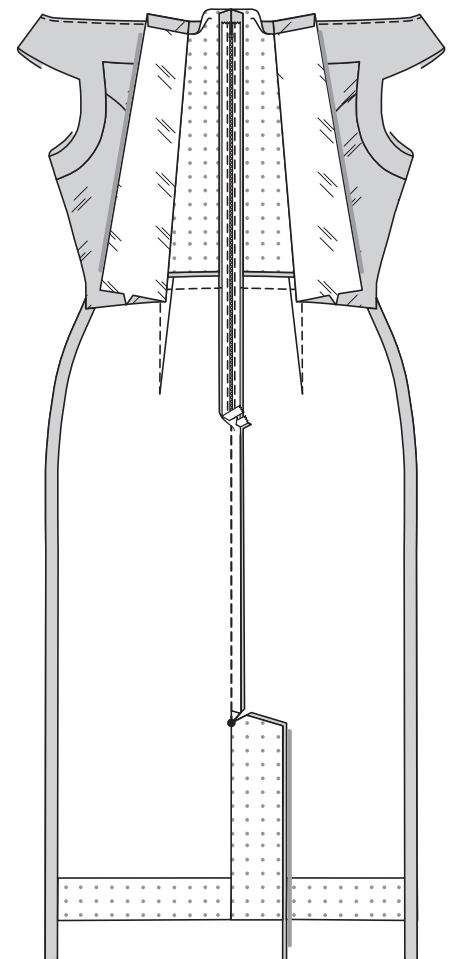
28. Move back edges of bodice lining away from back opening edges.
To install an **INVISIBLE ZIPPER**, open the zipper and press the tape flat on the WRONG side unrolling the coils. Do not press the coils. (Use a low iron setting.) On OUTSIDE, pin RIGHT side of the zipper face down on the RIGHT side of the zipper opening. Have the coil along the seam line, the tape within the seam allowance and the top stop 3/4" (2cm) below upper edge, as shown. Hand-baste along center of the tape. Position zipper foot at the top of the zipper with RIGHT groove of the foot over coil. Stitch along tape to the notch. Back-stitch to reinforce.



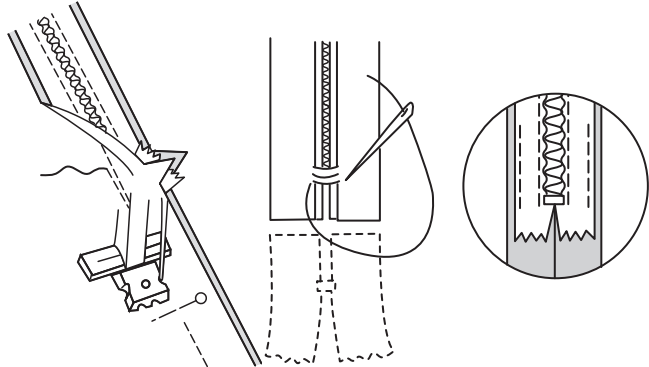
29. Pin the remaining half of the zipper to the LEFT side of the zipper opening in same manner. Make sure the upper and lower edges of the garment are even. Hand-baste along the center of the tape. Position zipper foot at the top of the zipper with LEFT groove over the coil. Stitch along tape to the notch. Back-stitch to reinforce.



30. Close zipper and check that it is invisible from the OUTSIDE.
Pull the free ends of the zipper tape away from the seam allowance. Pin remaining center back seam together below zipper. Position zipper foot all the way to the LEFT so the needle goes down through the outer notch of the foot. Start stitching seam 1/4" (6mm) above lowest stitch and slightly to the LEFT. Stitch seam for about 3" (7.5cm). Stitch remainder of seam to the large dot, using your regular presser foot. Back-stitch at large dot to reinforce the seam.

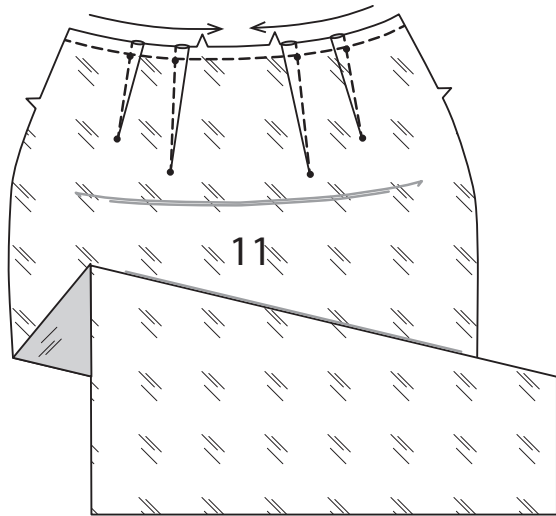


31. If the zipper is longer than the opening, using a strong thread, hand-sew a few small stitches across ends of coils at end of opening. Trim away lower end of zipper tape to within 5/8" (1.5cm) of hand-stitches. If you prefer, open out each seam allowance at end of zipper and stitch tape to seam allowance.

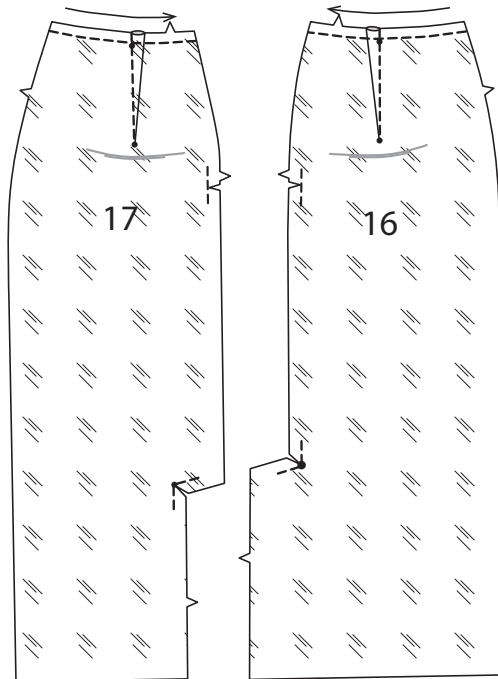


SKIRT LINING

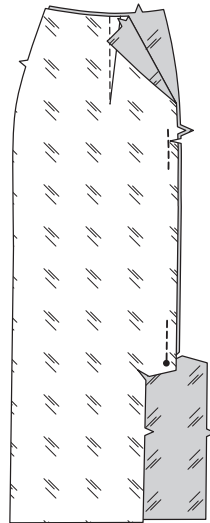
32. Make **FLAT DART(s)** in **SKIRT FRONT (11) LINING**. **STAYSTITCH** upper edge in the direction of the arrows.



33. Make **FLAT DART(s)** in **SKIRT RIGHT BACK LINING (16)** and **SKIRT LEFT BACK LINING (17)**. **STAYSTITCH** upper edges in the direction of the arrows. To reinforce inner corner of back vent extensions, stitch along seamline 1" (2.5cm) each side of large dot on **RIGHT** back lining and small dot on **LEFT** back lining, stitching through dots. Clip to stitching at dots, being careful not to clip through stitching. Reinforce and clip back edges of back sections just below the upper notch in the same manner.



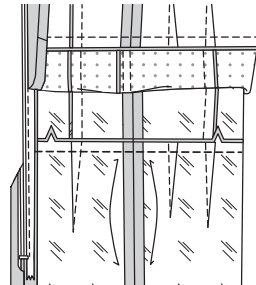
34. With **RIGHT** sides together, pin back lining sections together, matching large dots. Stitch from notch to large dot, leaving an opening for turning. Back-stitch at large dot and notch to reinforce the seam.



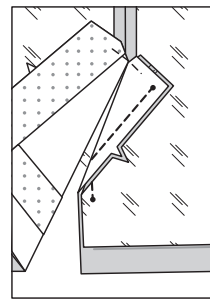
35. Stitch skirt front lining to skirt back lining sections at side edges.



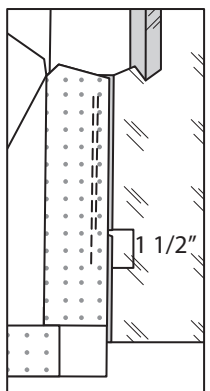
36. Open out bodice lining. With **RIGHT** sides together and raw edges even, pin upper edge of skirt lining to lower edge of bodice lining, matching centers, seams, and notches. Stitch. Press seam toward bodice lining.



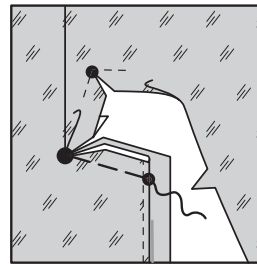
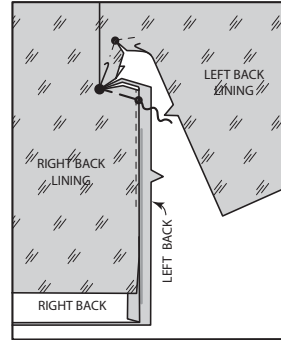
37. Spread vent edges apart at the large dot, as shown. **INSERT** dress into lining, having **RIGHT** sides together. Pin long edges of **RIGHT** vent and lining together, matching small dots and notches. Stitch between upper small dot and lower small dot.



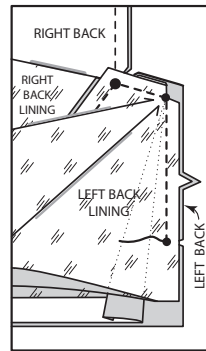
38. **UNDERSTITCH** **RIGHT** lining vent below small dot ending 1-1/2" (3.8cm) above end of stitching. Clip lining seam allowance at end of understitching.



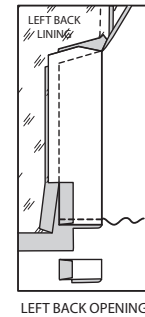
39. Press **RIGHT** vent along seam. Align pressed edge of **RIGHT** back vent with seam line of **LEFT** back vent, as shown. Move **LEFT** back lining up and away from **RIGHT** back lining, as shown. Pin upper edges of **RIGHT** back vent to **LEFT** back vent with **RIGHT** sides together, matching small and large dots. Baste between the large and small dots, keeping **LEFT** back lining free.



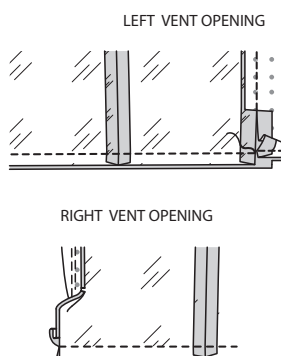
40. With **RIGHT** sides together, pin vent edges of **LEFT** back lining to the **LEFT** back, (over the **RIGHT** back vent), matching small and large dots. Starting at the large dot, stitch vent edges together, pivoting at upper small dot, keeping finished edge of **RIGHT** back vent free. Clip **LEFT** back seam allowance of dress at end of stitching.



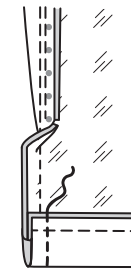
41. Press seams toward lining, pressing seam open below clip. Fold **LEFT** back to **OUTSIDE** along foldline, forming facing. Stitch across facing exactly 2" (5cm) above lower edge of dress. Trim lower edge of facing close to stitching; trim dress to within 5/8" (1.5cm) of inner edge of facing.



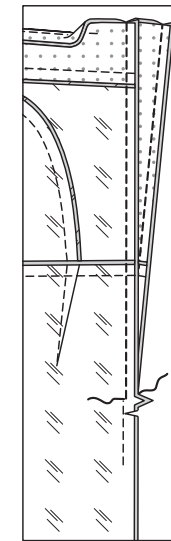
42. With **RIGHT** sides together, pin lower edges of dress and lining together matching centers and seams. Stitch 1/2" (1.3cm) above lower raw edges from **RIGHT** vent opening to facing seam on **LEFT** vent.



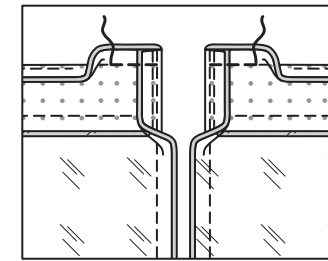
43. At **RIGHT** back vent only, turn up skirt hem to **OUTSIDE**, over lining along hemline, (lining hem will turn up with dress), as shown. Stitch remaining raw edges of **RIGHT** back vent together, connecting to previous stitching. **TRIM** seam and corners.



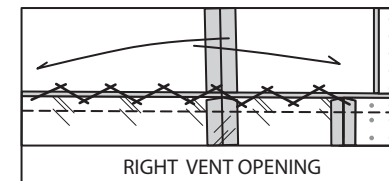
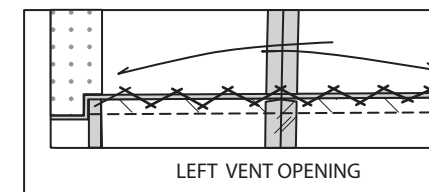
44. Open out center back opening edges of dress, rolling zipper teeth away from opening edge. Pin back opening edges together. Using an adjustable zipper foot, stitch across facing/lining 1/2" (1.3cm) from back edges from upper edge to notch, keeping zipper teeth free.



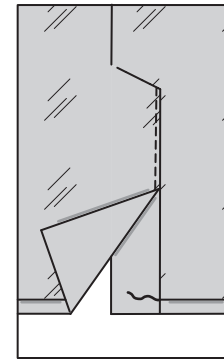
45. With **RIGHT** sides together, pin facing/lining to dress, matching centers and seams. Stitch upper edge, connecting to previous stitching. **TRIM SEAM.**



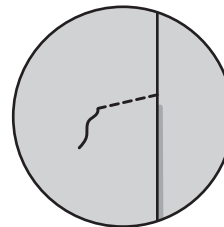
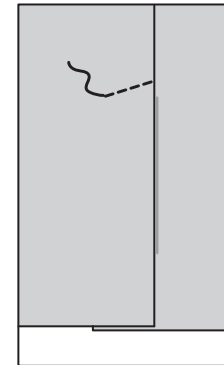
46. With the **WRONG** side of dress facing you, turn up 2" (5cm) hem allowance, turning lower edge of lining over dress and turning out corner of **RIGHT** vent. **CATCH STITCH** skirt hem in place as far as possible, being careful not to catch opening edge of lining.



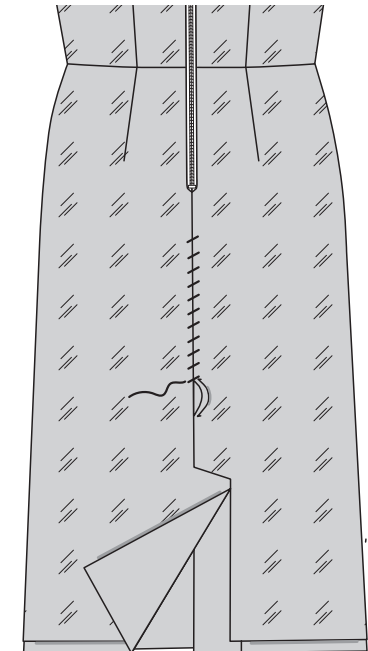
47. Turn dress and lining **RIGHT** side out through center back opening in lining, turning **LEFT** back vent along foldline. Allow lining to drop. **SLIPSTITCH** facing to hem.



48. On **OUTSIDE**, topstitch **LEFT** back along stitching line.

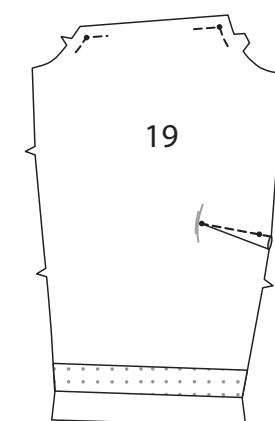


49. On **INSIDE**, **SLIPSTITCH** center back opening in lining closed.



SLEEVE B

50. Make **FLAT DART** in **SLEEVE (19)**. Press dart toward hem. To reinforce upper and armhole edge of sleeve at small dots, stitch along seam line for about 1" (2.5cm) each side of small dots, stitching through dots, as shown.



30. Fermer la fermeture et vérifier qu'elle ne soit pas visible de l'ENDROIT. Tirer les extrémités libres du ruban de la fermeture à l'opposé de la valeur de couture. Épingler la couture restante du milieu dos ensemble au-dessous de la fermeture. Placer le pied à fermeture vers la GAUCHE de sorte que l'aiguille descende à travers l'encoche extérieure du pied. Commencer à piquer à 6 mm au-dessus du point le plus bas et légèrement vers la GAUCHE. Piquer la couture sur environ 7.5 cm. Piquer le reste de la couture jusqu'au grand cercle, en utilisant un pied-de-biche régulier. Piquer au point arrière sur le grand cercle pour renforcer la couture.

31. Si la fermeture est plus longue que l'ouverture, en utilisant du fil solide, coudre à la main quelques petits points à travers les spirales au bas de l'ouverture. Découper l'extrémité inférieure du ruban à 1.5 cm des points à la main.
Si vous préférez, déplier chaque valeur de couture au bas de la fermeture et piquer le ruban sur celle-là.

DOUBLURE DE JUPE

32. Faire une **PINCE PLATE (S)** sur la DOUBLURE de JUPE DEVANT (11).
Faire une **PIQÛRE DE SOUTIEN** sur le bord supérieur dans le sens des flèches.

33. Faire une **PINCE PLATE (S)** sur la DOUBLURE JUPE DOS DROIT (16) et la DOUBLURE JUPE DOS GAUCHE (17).
Faire une **PIQÛRE DE SOUTIEN** sur les bords supérieurs dans le sens des flèches.
Pour renforcer le coin intérieur des prolongements de la fente dos, piquer le long de la ligne de couture à 2.5 cm de chaque côté du grand cercle sur la doublure dos DROIT et du petit cercle sur la doublure dos GAUCHE, en piquant à travers les cercles. Cranter vers la piqûre sur les cercles, en veillant à ne pas cranter à travers la piqûre.
Renforcer et cranter les bords du dos des pièces du dos juste au-dessous de l'encoche supérieure de la même façon.

34. ENDROIT CONTRE ENDROIT, épingler ensemble les pièces de la doublure dos, en faisant coïncider les grands cercles. Piquer de l'encoche au grand cercle, en laissant une ouverture pour retourner. Piquer au point arrière au grand cercle et à l'encoche pour renforcer la couture.

35. Piquer la doublure jupe devant et les pièces de la doublure jupe dos sur les bords du côté.

36. Ouvrir la doublure de corsage. ENDROIT CONTRE ENDROIT et ayant les bords non finis au même niveau, épingler le bord supérieur de la doublure de jupe sur le bord inférieur de la doublure de corsage, en faisant coïncider les milieux, les coutures et les encoches.
Piquer. Presser la couture vers la doublure de corsage.

37. Séparer les bords de la fente au grand cercle, comme illustré. INSÉRER la robe dans la doublure, ENDROIT CONTRE ENDROIT. Épingler ensemble les longs bords sur la fente et doublure DROITE, en faisant coïncider les petits cercles et le encoches. Piquer entre le petit cercle supérieur et le petit cercle inférieur.

38. SOUS-PIQUER la fente de la doublure DROITE au-dessous du petit cercle en arrétant à 3.8 cm au-dessus de l'extrémité de la piqûre. Cranter la valeur de couture de la doublure à l'extrémité de la sous-piqûre.

39. Presser la fente DROITE le long de la couture. Aligner le bord pressé de la fente dos DROIT avec la ligne de couture de la fente dos GAUCHE, comme illustré. Déplacer la doublure dos GAUCHE vers le haut et à l'opposé de la doublure dos DROIT, comme illustré.
Épingler les bords supérieurs de la fente dos DROIT sur la fente dos GAUCHE, ENDROIT CONTRE ENDROIT, en faisant coïncider les petits et les grands cercles. Bâtir entre le grand cercle et le petit cercle, en maintenant la doublure dos GAUCHE libre.

40. ENDROIT CONTRE ENDROIT, épingler les bords de la fente de la doublure dos GAUCHE sur le dos GAUCHE, (par-dessus la fente dos DROIT), en faisant coïncider les petits et les grands cercles. En commençant au grand cercle, piquer ensemble les bords de la fente, en pivotant au petit cercle supérieur, en maintenant libre le bord fini de la fente dos DROIT. Cranter la valeur de couture du dos GAUCHE de la robe à l'extrémité de la piqûre.

41. Presser les coutures vers la doublure, en ouvrant la couture au fer au-dessous du cran. Plier le dos GAUCHE vers l'EXTÉRIEUR sur la ligne de pliure, en formant la parementure.
Piquer à travers la parementure exactement à 5 cm au-dessus du bord inférieur de la robe.
Recouper le bord inférieur de la parementure près de la piqûre ; recouper la robe jusqu'à 1.5 cm du bord intérieur de la parementure.

42. ENDROIT CONTRE ENDROIT, épingler ensemble les bords inférieurs de la robe et de la doublure, en faisant coïncider les milieux et les coutures. Piquer à 1.3 cm au-dessus des bords non finis inférieurs depuis l'ouverture de la fente DROITE jusqu'à la couture de parementure sur la fente GAUCHE.

43. Sur la fente dos DROIT seulement, relever l'ourlet de la jupe vers l'EXTÉRIEUR, par-dessus la doublure le long de la ligne d'ourlet, (l'ourlet de la doublure se relèvera avec la robe), comme illustré.
Piquer ensemble les bords non finis restants de la fente dos DROIT, en raccordant avec la piqûre précédente.
COUPER LA COUTURE et biaiser les coins.

44. Déplier les bords de l'ouverture du milieu dos de la robe, en déroulant les dents de la fermeture à l'opposé du bord de l'ouverture. Épingler ensemble les bords de l'ouverture du dos. En utilisant un pied à fermeture réglable, piquer à travers la parementure/doublure à 1.3 des bords du dos depuis le bord supérieur jusqu'à l'encoche, en maintenant les dents de la fermeture libres.

45. ENDROIT CONTRE ENDROIT, épingler la parementure/doublure sur la robe, en faisant coïncider les milieux et les coutures. Piquer le bord supérieur, en raccordant avec la piqûre précédente. **COUPER LA COUTURE.**

46. Avec l'ENVERS de la robe vers vous, relever une valeur de couture d'ourlet de 5 cm, en retournant le bord inférieur de la doublure par-dessus la robe et en retournant vers l'extérieur le coin de la fente DROITE. Coudre aux **POINTS DE CHAUSSON** l'ourlet de la jupe en place aussi loin que possible, en veillant à ne pas saisir le bord de l'ouverture de la doublure.

47. Retourner la robe et la doublure à l'ENDROIT à travers l'ouverture du milieu dos de la doublure, en retournant la fente dos GAUCHE le long de la ligne de pliure. Laisser tomber la doublure. Coudre la parementure sur l'ourlet aux **POINTS COULÉS.**

48. Sur l'ENDROIT, surpiquer le dos GAUCHE le long de la ligne de piqûre.

49. Sur l'ENVERS, coudre l'ouverture du milieu dos de la doublure fermée aux **POINTS COULÉS.**

MANCHE B

50. Faire la **PINCE PLATE** sur la MANCHE (19), puis la presser vers l'ourlet.
Pour renforcer le bord supérieur et de l'emmanchure de la manche sur les petits cercles, piquer le long de la ligne de couture sur environ 2.5 cm de chaque côté des petits cercles, en piquant à travers les cercles, comme illustré.

51. Piquer les bords du dessous de bras de la manche.
Rentrer une valeur de couture d'ourlet de 3.8 cm ; presser, en pressant le pli vers l'intérieur.

52. Faire une **PINCE PLATE**, renforcer le bord supérieur et de l'emmanchure et piquer la couture de dessous de bras de la doublure de manche comme décrit pour la manche.

Déplier l'ourlet de la manche. ENDROIT CONTRE ENDROIT et ayant les bords non finis au même niveau, épingler la doublure sur la manche le long du bord inférieur, en faisant coïncider les coutures et les encoches. Piquer le bord inférieur en couture de 1.3 cm. **COUPER LA COUTURE.**

53. Retourner la doublure vers l'INTÉRIEUR ; presser, en relevant au fer l'ourlet de la manche le long du pli.
Bâtir ensemble les bords de l'emmanchure de la manche. Cranter la manche et la doublure vers le bâti sur les petits cercles.
Si vous préférez, fixer la doublure sur la valeur de couture d'ourlet de la manche sur la couture de dessous de bras.

54. Pour la **MANCHE MONTÉE**, retourner la manche à l'ENDROIT. Tenir la robe à l'ENVERS avec l'emmanchure vers vous. ENDROIT CONTRE ENDROIT, épingler la manche sur le bord de l'emmanchure ayant le petit cercle du milieu sur la couture d'épaule, en faisant coïncider les coutures de dessous de bras, les encoches et les petits cercles restants. Bâtir. Piquer, puis piquer à 3 mm de la première piqûre. Recouper la couture au-dessous des encoches près de la piqûre.
Ne presser que la valeur de couture, en rétrécissant l'ampleur.

CEINTURE

55. Rentrer au fer les longs bords et l'extrémité en pointe de la CEINTURE (18) le long des valeurs de couture, comme illustré.

56. Recouper les valeurs de couture de la sangle pour CEINTURE (18), en laissant le bord droit libre.

57. Épingler la sangle pour ceinture ENVERS CONTRE ENVERS et ayant les bords non finis au même niveau. Piquer près des longs bords et de l'extrémité en pointe.

58. Recouvrir la boucle en suivant la notice d'utilisation.
Enfiler l'extrémité droite de la ceinture à travers la boucle, rentrer sur la ligne de pliure. Piquer à travers l'extrémité et de nouveau à 6 mm.

59. Sur l'ENDROIT, faire des boucle de chaînette de fil sur les côtés, sur la couture de taille, comme illustré, assez grandes pour faire passer la ceinture.
Enfiler la ceinture dans les boucles et fermer au moment de porter.