

- | | |
|----------------------|--------------------------|
| 1 BODICE RIGHT FRONT | 1 CORSAGE DEVANT DROIT |
| 2 BODICE LEFT FRONT | 2 CORSAGE DEVANT GAUCHE |
| 3 TIE END | 3 ATTACHE |
| 4 TAB | 4 PATTE |
| 5 BODICE SIDE FRONT | 5 CORSAGE CÔTÉ DEVANT |
| 6 BODICE BACK | 6 CORSAGE DOS |
| 7 YOKE BACK | 7 EMPÈCEMENT DOS |
| 8 UPPER COLLAR | 8 DESSUS DE COL |
| 9 UNDER COLLAR | 9 DESSOUS DE COL |
| 10 SLEEVE | 10 MANCHE |
| 11 SLEEVE FACING | 11 PAREMENTURE DE MANCHE |
| 12 SKIRT RIGHT FRONT | 12 JUPE DEVANT DROIT |
| 13 SKIRT LEFT FRONT | 13 JUPE DEVANT GAUCHE |
| 14 SKIRT BACK | 14 JUPE DOS |
| 15 SKIRT SIDE BACK | 15 JUPE CÔTÉ DOS |
| 16 POCKET | 16 POCHE |

BODY MEASUREMENTS / MESURES DU CORPS

MISSÉS/JEUNE FEMME										
Sizes/Tailles	6	8	10	12	14	16	18	20	22	24
Bust (ins)	30½	31½	32½	34	36	38	40	42	44	46
Waist	23	24	25	26½	28	30	32	34	37	39
Hip	32½	33½	34½	36	38	40	42	44	46	48
Bk. Wst Lgth.	15½	15¾	16	16¼	16½	16¾	17	17¼	17½	17¾
T. poitrine (cm)	78	80	83	87	92	97	102	107	112	117
T. taille	58	61	64	67	71	76	81	87	94	97
T. hanches	83	85	88	92	97	102	107	112	117	122
Nuque à taille	39.5	40	40.5	41.5	42	42.5	43	44	44	45

FABRIC CUTTING LAYOUTS

⊕ Indicates Bustline, Waistline, Hipline and/or Biceps. Measurements refer to circumference of Finished Garment (Body Measurement + Wearing Ease + Design Ease). Adjust Pattern if necessary.

Lines shown are CUTTING LINES, however, 5/8" (1.5cm) SEAM ALLOWANCES ARE INCLUDED, unless otherwise indicated. See SEWING INFORMATION for seam allowance.

Find layout(s) by Garment/View, Fabric Width and Size. Layouts show approximate position of pattern pieces; position may vary slightly according to your pattern size.

All layouts are for with or without nap unless specified. For fabrics with nap, pile, shading or one-way design, use WITH NAP layout.

RIGHT SIDE OF PATTERN	WRONG SIDE OF PATTERN	RIGHT SIDE OF FABRIC	WRONG SIDE OF FABRIC
-----------------------	-----------------------	----------------------	----------------------

S/T = SIZE(S)/TAILLE(S)
***** = WITH NAP/AVEC SENS
S/L = SELVAGE(S)/LISIÈRE(S)
AS/TT = ALL SIZE(S)/TOUTES TAILLE(S)
****** = WITHOUT NAP/SANS SENS
F/P = FOLD/PLIURE
CF/PT = CROSSWISE FOLD/PLIURE TRAME

Position fabric as indicated on layout. If layout shows...

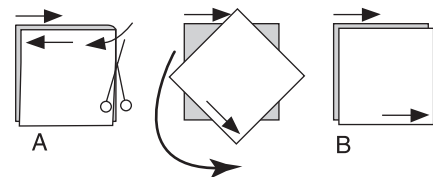
GRAINLINE—Place on straight grain of fabric, keeping line parallel to selvage or fold. ON “with nap” layout arrows should point in the same directions. (On Fur Pile fabrics, arrows point in direction of pile.)

SINGLE THICKNESS—Place fabric right side up. (For Fur Pile fabrics, place pile side down.)

DOUBLE THICKNESS

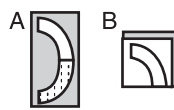
WITH FOLD—Fold fabric right sides together.

✱ **WITHOUT FOLD**—With right sides together, fold fabric **CROSSWISE**. Cut fold from selvage to selvage (A). Keeping right sides together, turn upper layer completely around so nap runs in the same direction as lower layer.



FOLD—Place edge indicated exactly along fold of fabric. NEVER cut on this line.

When pattern piece is shown like this...



• Cut other pieces first, allowing enough fabric to cut this piece (A). Fold fabric and cut piece on fold, as shown (B).

★ Cut piece only once. Cut other pieces first, allowing enough fabric to cut this piece. Open fabric; cut piece on single layer.

Cut out all pieces along cutting line indicated for desired size using long, even scissor strokes, cutting notches outward.

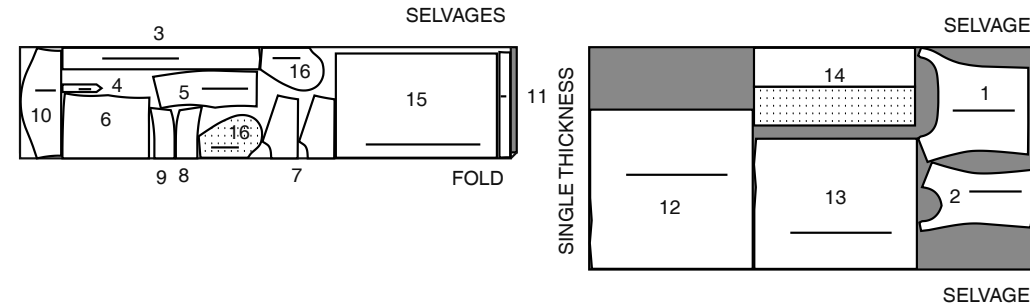
Transfer all markings and lines of construction before removing pattern tissue. (Fur Pile fabrics, transfer markings to wrong side.)

NOTE: Broken-line boxes (a! b! c!) in layouts represent pieces cut by measurements provided.

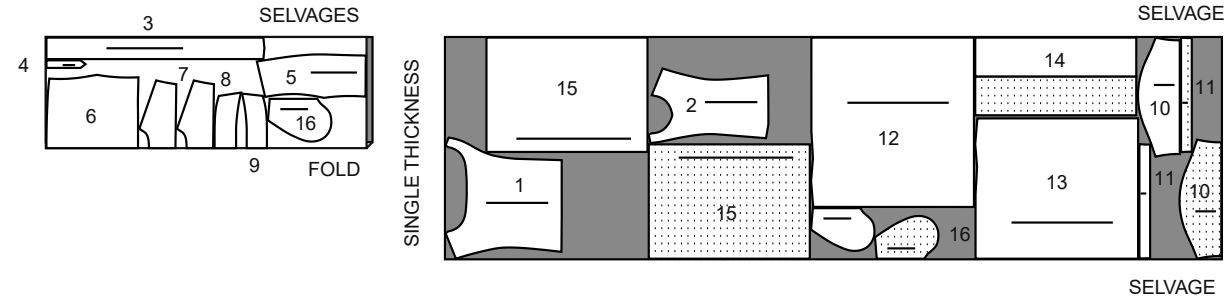
DRESS A / ROBE A

PIECES: 1 2 3 4 5 6 7 8 9 10 11 12 13 14 15 16

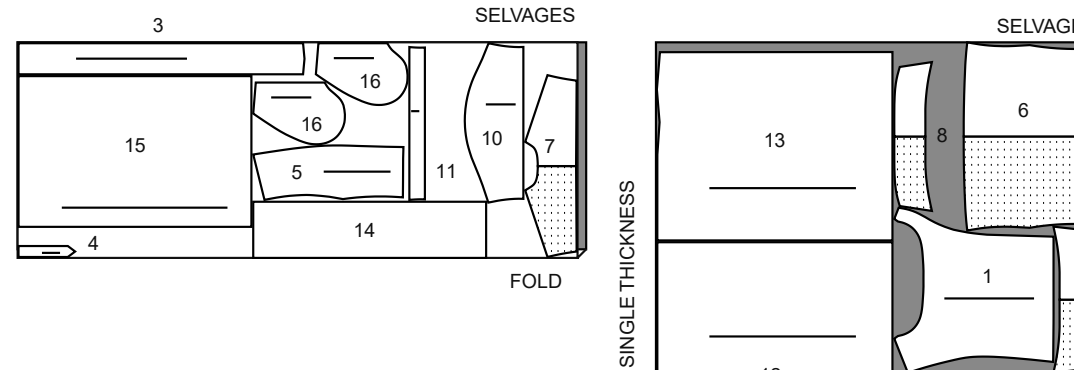
45" (115 cm)*
S/T
6 8 10 12 14 16



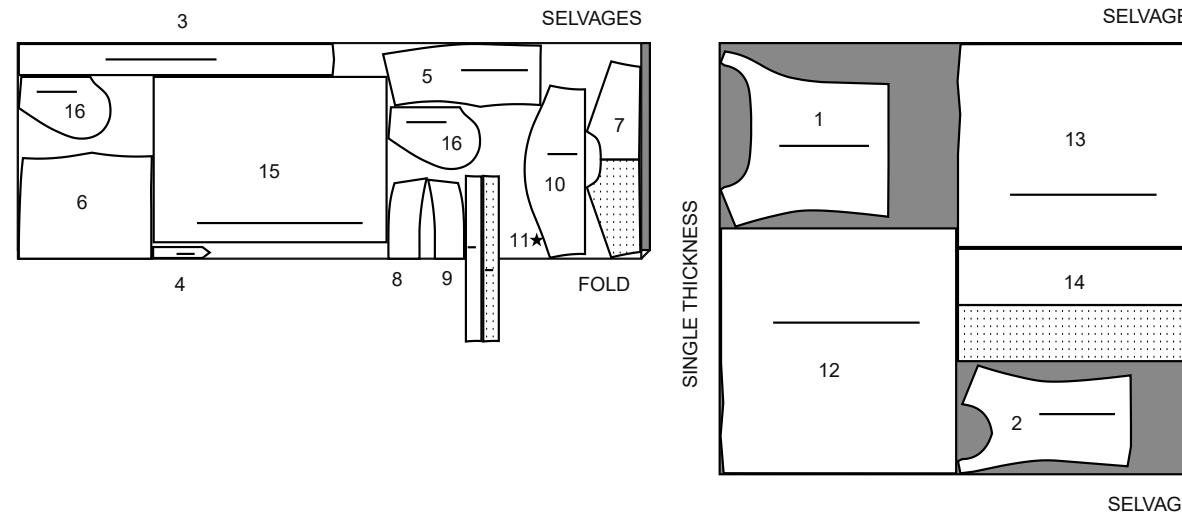
45" (115 cm)*
S/T
18 20 22 24



60" (150 cm)*
S/T
6 8 10 12 14 16



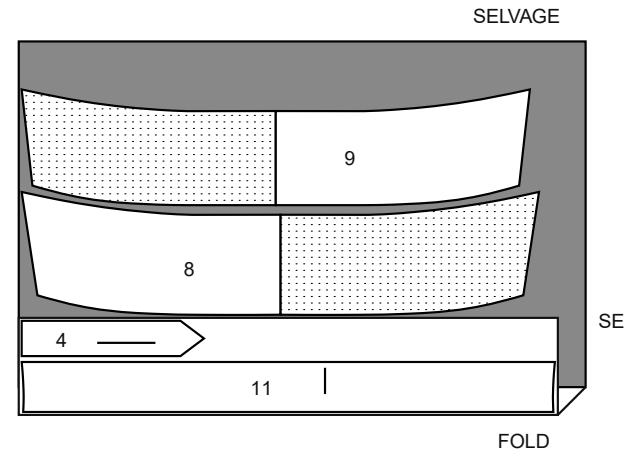
50" (150 cm)*
S/T
18 20 22 24



INTERFACING A,B / ENTOILAGE A, B

PIECES: 4 8 9 11

20" (51cm)*
AS/TT



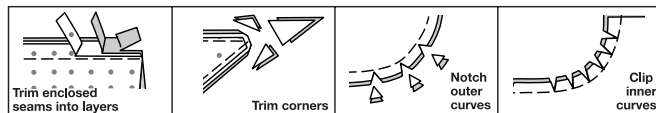
SEWING INFORMATION

5/8" (1.5cm) SEAM ALLOWANCES ARE INCLUDED,
(unless otherwise indicated)

ILLUSTRATION SHADING KEY

Right Side	Wrong Side	Interfacing	Lining	Underlining

Press as you sew. Press seams flat, then press open, unless otherwise instructed. Clip seam allowances, where necessary, so they lay flat.



GLOSSARY

Sewing methods in **BOLD TYPE** have Sewing Tutorial Video available. Scan **QR CODE** to watch videos:

EASE/GATHER – see **Gathering: “sewing two row gathers”** video.

EDGE STITCH – see **Machine Stitches: “how to sew an edgestitch”** video.

STAYSTITCH – see **Machine Stitches: “how to do stay stitching”** video.

TOPSTITCH – see **Machine Stitches: “how to topstitch”** video.

TRIM SEAM – see **Seams: “how to trim, clip and layer seams”** video.

UNDERSTITCH – see **Machine Stitches: “how to understitch”** video.

SEWING TUTORIALS



Build your skills viewing short, easy-to-follow videos at [simplicity.com/sewingtutorials](https://www.simplicity.com/sewingtutorials)

GLOSSARY OF SEWING METHODS

Sewing methods shown in **BOLD** are defined below:

FRENCH SEAM – Stitch 3/8" (1cm) seam with **WRONG** sides together and press to one side as indicated in Sewing Directions. Trim seam allowance to 1/8" (3mm). Fold fabric **RIGHT** sides together along stitching. Press. Stitch 1/4" (6mm) from the fold, encasing first seam. Press seam flat and then to one side.

INSIDE FLAT FELLED SEAM – Stitch seam with **RIGHT** sides together and press to one side as indicated in Sewing Directions. Trim the upper seam allowance to a scant 1/2" (1.3cm) and the lower seam allowance to 1/8" (3mm). Turn under the upper seam allowance 1/4" (6mm); press. Stitch upper seam allowance close to inner pressed edge.

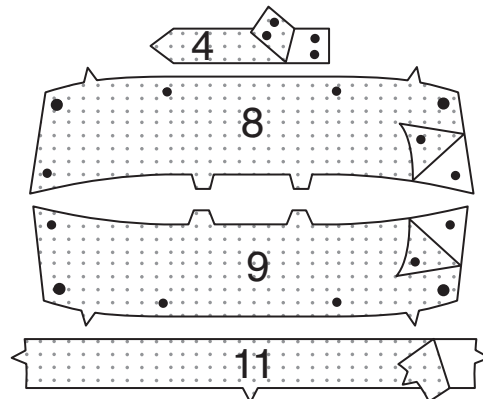
PATTERN PIECES WILL BE IDENTIFIED BY NUMBERS THE FIRST TIME THEY ARE USED.

STITCH 5/8" (1.5CM) SEAMS WITH RIGHT SIDES TOGETHER UNLESS OTHERWISE STATED.

DRESS

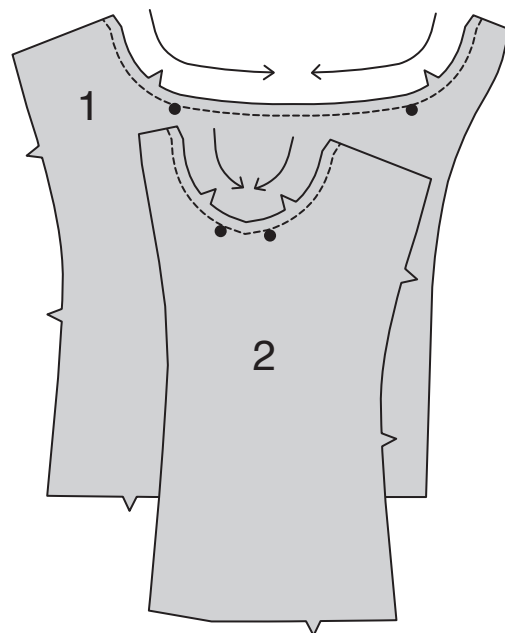
INTERFACING

1. Apply interfacing to **WRONG** side of **TAB** (4), **UPPER COLLAR** (8), **UNDER COLLAR** (9) and **SLEEVE FACING** (11) sections. Fuse in place following manufacturer's directions.

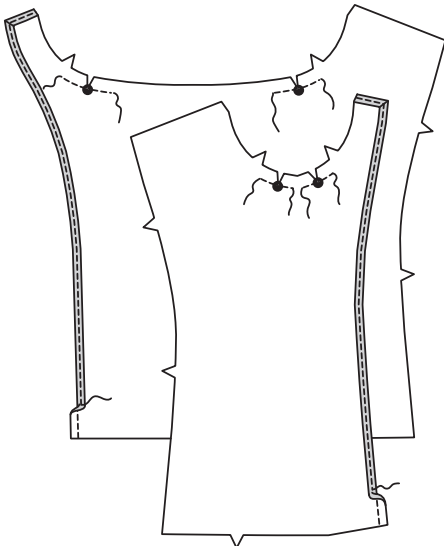


BODICE

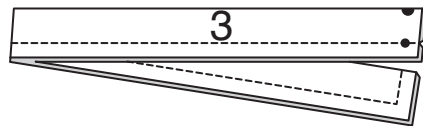
2. **STAYSTITCH** neck edge of **BODICE RIGHT FRONT** (1) and **BODICE LEFT FRONT** (2) in the direction of the arrows. Staystitching will not be shown in the following illustrations.



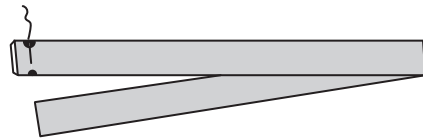
3. To reinforce neck edge of bodice right front and bodice left front at large dots, stitch along seam line for about 1" (2.5cm) each side of large dots, stitching through dots, as shown. Clip to stitching at dots. To finish inner and shoulder edges of front extension (facing), stitch 1/4" (6mm) from edge, turn under edge along stitching and stitch, **OR** zigzag stitch or overlock stitch raw edges, stopping 2" (5cm) above lower edge.



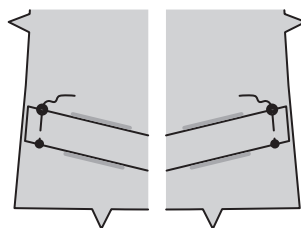
4. Attach a safety pin to unmarked end of **TIE END** (3) just **OUTSIDE** the seam allowance. Fold tie end in half lengthwise, with **RIGHT** sides together. Stitch long edge and unmarked end. **TRIM SEAM.**



5. Back safety pin through inside of tie, turning the tie **RIGHT** side out. Press. Baste raw edges together.



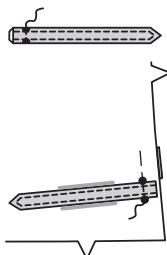
6. On **OUTSIDE**, pin tie to bodice right front at side front edge, matching small and large dots. Baste. Stitch tie to bodice left front in the same manner.



7. Attach a safety pin to unmarked end of **TAB** (4) just **OUTSIDE** the seam allowance. With **RIGHT** sides together and raw edges even, pin facing to tab. Stitch in a 3/8" (1cm) seam, leaving end with small dots open. **TRIM SEAM.**

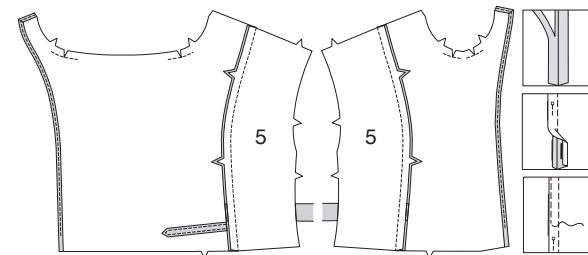


8. Back safety pin through inside of tab, turning the tab **RIGHT** side out. Press. **EDGE STITCH** close to finished edges. On **INSIDE**, pin tab to bodice **RIGHT** front at side front edge, matching small dots. Baste.

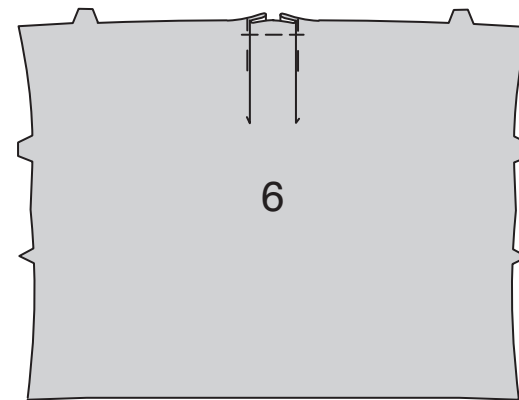


9. Stitch bodice right front to **BODICE SIDE FRONT** (5) in an **INSIDE FLAT FELLED SEAM**, pressing seam toward front.

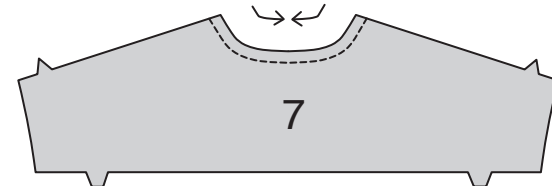
Stitch bodice left front to bodice side front in the same manner.



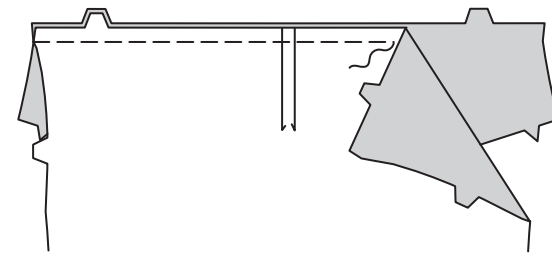
10. To make pleats in **BODICE BACK** (6), on **OUTSIDE**, fold along solid lines. Bring folds to broken lines; pin. Baste across raw edge.



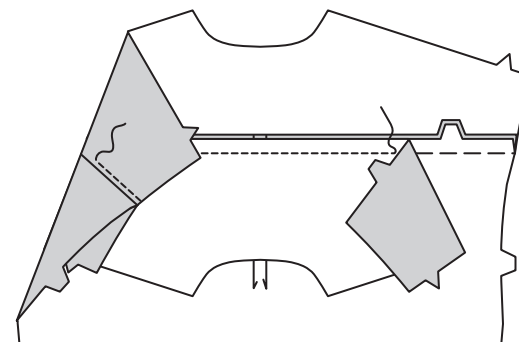
11. STAYSTITCH neck edge of **YOKE BACK** (7) sections. Staystitching will not be shown in the following illustrations.



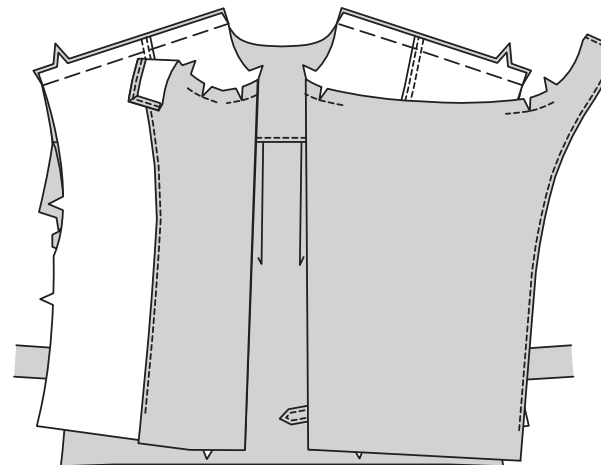
12. With **RIGHT** sides together, pin bodice back to yoke back, matching centers and notches. Baste.



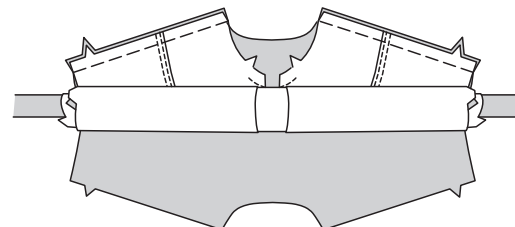
13. Pin **RIGHT** side of back yoke facing to **WRONG** side of bodice back, matching centers and notches. Stitch seam through all thicknesses. Press yoke up, leaving yoke facing down toward back, as shown. On **OUTSIDE**, **TOPSTITCH** though yoke and seam allowances. **TRIM SEAM.**



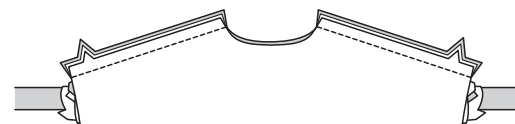
14. With **RIGHT** sides together, pin yoke to both front sections at shoulder edges, matching notches; baste.



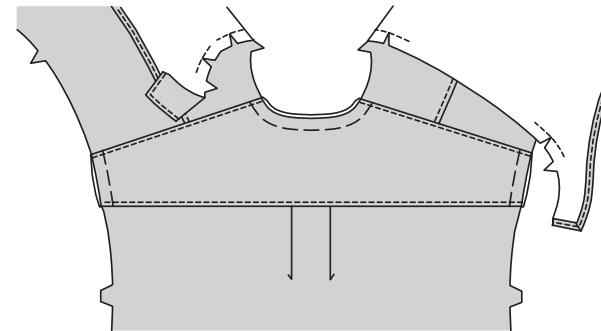
15. Roll bodice back and both front sections together toward yoke, as shown.



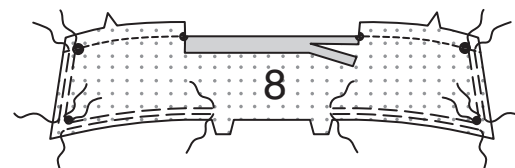
16. Stitch seams through all thicknesses, being careful not to catch in rolled bodice. **TRIM SEAMS.**



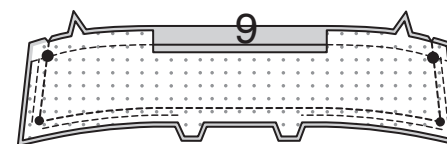
17. Pull out rolled bodice through one armhole opening, turning bodice **RIGHT** side out. Press all yoke seams. Machine-baste neck and armhole edges together. On **OUTSIDE**, **TOPSTITCH** yoke along shoulder seam.



18. EASE stitch **UPPER COLLAR** (8) between large dot and double notch, breaking stitching at small dots. Machine-stitch 5/8" (1.5cm) from single notched edge. Clip to stitching at small dots. Press under 5/8" (1.5cm) on raw edge between clips. Trim to 1/4" (6mm).



19. With **RIGHT** sides together, pin **UNDER COLLAR** (9) to upper collar at double notched and side edges, pulling up ease stitches to fit. Stitch. **TRIM SEAM.**

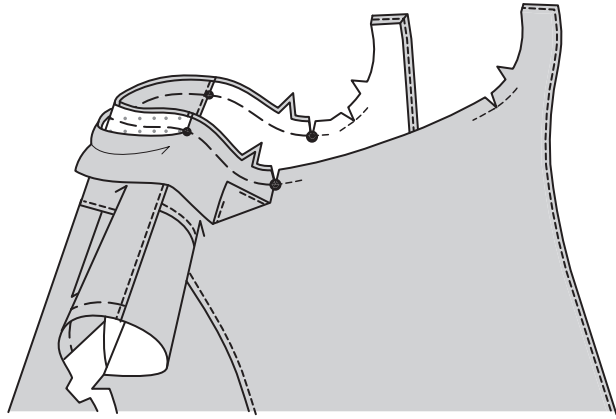


20. UNDERSTITCH the under collar. Turn collar; press.

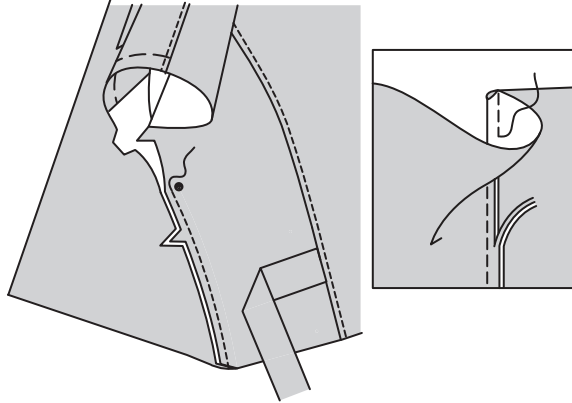
Clip neck edge of bodice and facing to staystitching.

On **OUTSIDE**, pin collar (under collar side) to neck edge, matching centers and placing small dot at shoulder seam. Baste both collar and facing sections to front neck edge as far as small dot.

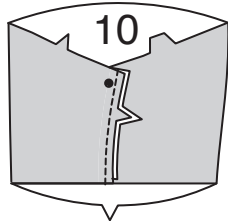
Baste only the collar facing section to remaining neck edge between small dots.



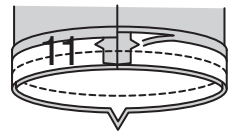
21. Stitch bodice front to bodice back at side edges in a **FRENCH SEAM**. Press seam toward back.



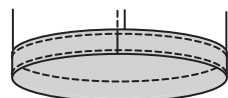
22. Stitch underarm edges of sleeve in a **FRENCH SEAM**. Press seam toward back.



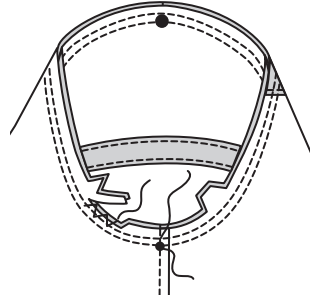
23. Stitch together notched ends of **SLEEVE FACING** (11). Press under 1/2" (1.3cm) on unnotched edge. Trim to 1/4" (6cm). On **OUTSIDE**, pin facing to sleeve, matching seams and notches. Stitch. **TRIM SEAM**.



24. UNDERSTITCH the facing. Turn facing to **INSIDE**; press. **EDGESTITCH** close to inner pressed edge.

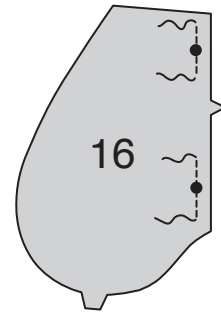


25. Turn sleeve **RIGHT** side out. Hold bodice **WRONG** side out with armhole toward you. With **RIGHT** sides together, pin sleeve to armhole edge with center small dot at shoulder seam, matching underarm seams, notches and remaining small dots. Baste. Stitch. Stitch again 1/8" (3mm) from first stitching. Trim seam to 1/8" (3mm). Zigzag stitch raw edges to finish. Press seam toward sleeve.

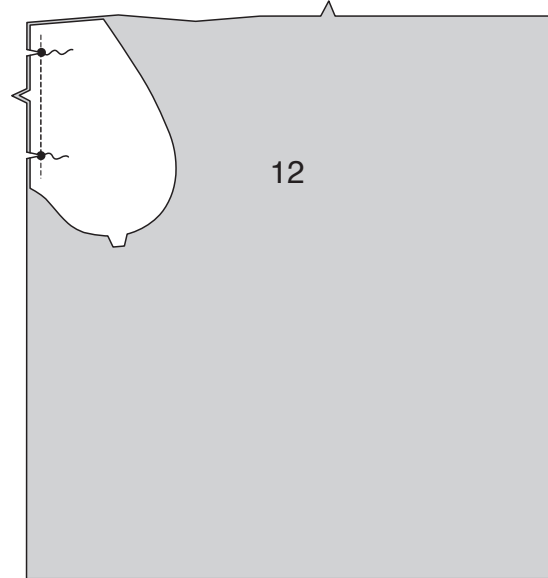


SKIRT

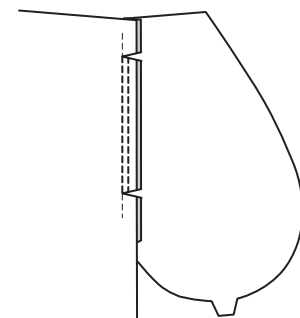
26. To reinforce **POCKET** (16) facing edge at large dots, stitch along seam line for about 1" (2.5cm) each side of small and large dots, stitching through dots, as shown.



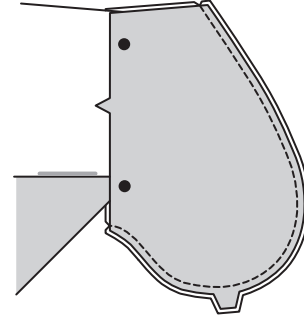
27. With **RIGHT** sides together, pin **POCKET** facing to **SKIRT RIGHT FRONT** (12), matching large dots, having raw edges even. Stitch between the large dots. Clip seam allowance to stitching at large dots. **TRIM SEAM**.



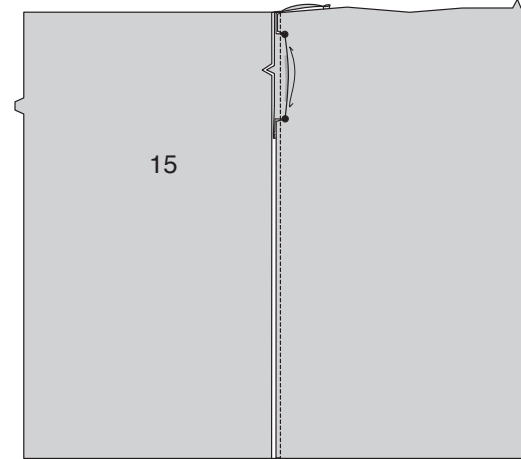
28. UNDERSTITCH pocket facing. Press seams toward pocket, pressing pocket out.



29. Pin pocket to pocket facing with **WRONG** sides together, matching large dots and notches. Stitch double notched edge in a **FRENCH SEAM**.

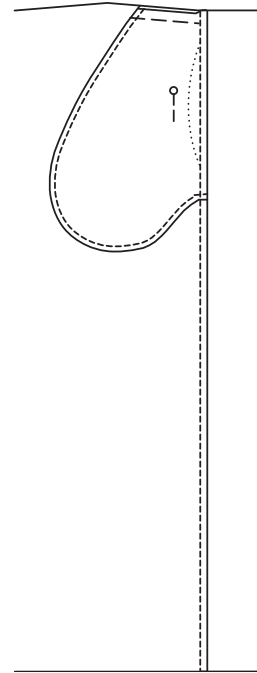


30. Pin finished edge of pocket away from side seam allowance. Pin skirt right front to skirt side back at side seams with **WRONG** sides together, matching notches. Stitch side seams in a **FRENCH SEAM**.

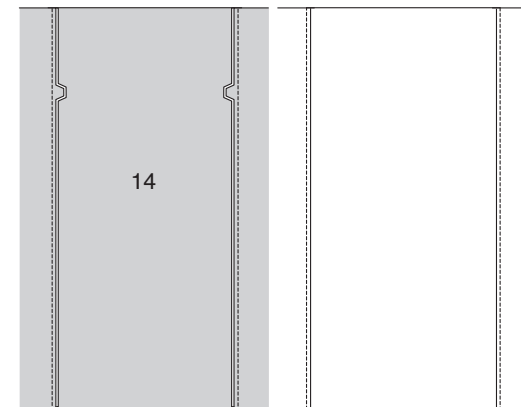


31. Press pocket toward right front; baste upper edges together.

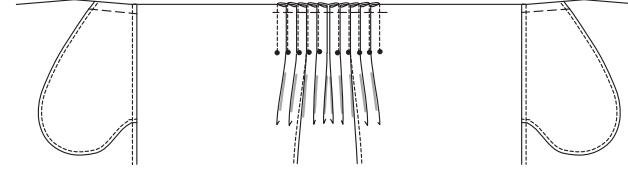
Stitch pocket and seams in **SKIRT LEFT FRONT** (13) in the same manner.



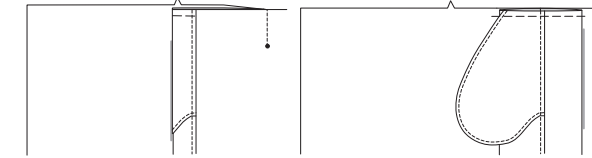
32. Stitch **SKIRT BACK** (14) to side back edge of skirt side back in a **FRENCH SEAM**. Press seam toward back.



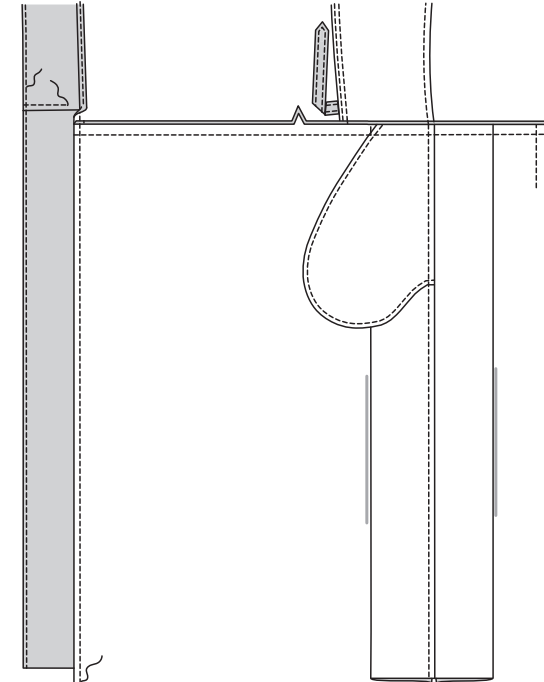
33. To make narrow pleats in back and side back, on **INSIDE**, bring broken lines together. Stitch along broken lines to small dots. Press pleats toward center back. Baste across upper edge.



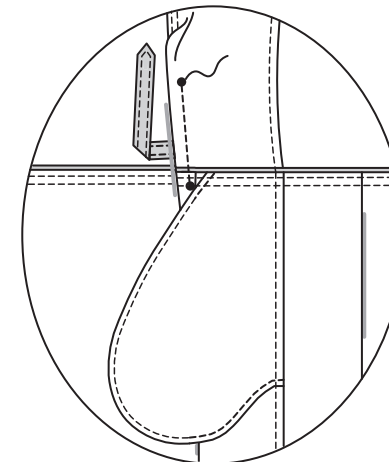
34. To make wide pleats in front and side back, on **INSIDE**, bring broken lines together. Stitch along broken lines to small dots. Press pleat flat bringing stitching to center. Baste across raw edge.



35. Open out the facing. With **RIGHT** sides together and raw edges even, pin upper edge of skirt to lower edge of bodice, matching centers, seams, and notches. Stitch. Press seam toward bodice. On **OUTSIDE**, **TOPSTITCH** bodice away from seam. Finish inner edge of skirt facing in the same manner as for bodice, connecting to previous stitching.

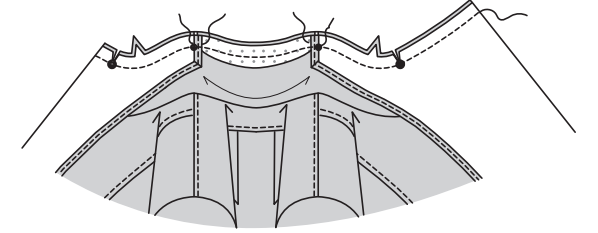


36. To make remaining narrow pleats in bodice side front and skirt, on **INSIDE**, bring broken lines to side front seamline, matching small dots. Stitch along broken lines. Press pleats toward front.

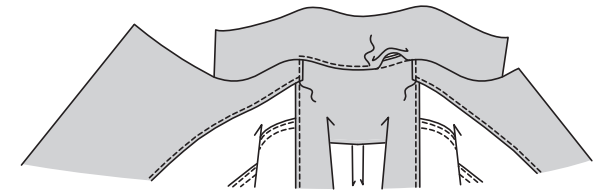


FACING

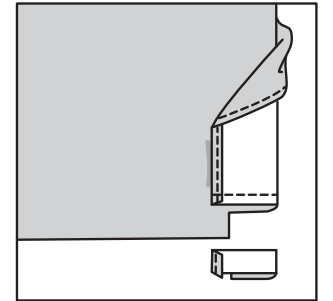
37. Turn front extension to **OUTSIDE** along foldline, forming facing. Baste to neck edge from fold to inner small dots. Stitch entire neck edge, breaking stitching at inner small dots, being careful not to catch in free edge of collar.



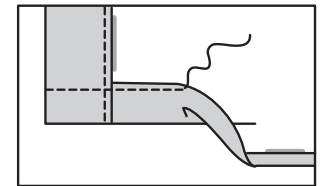
38. Turn facing to **INSIDE**, turning back neck seam toward collar; press. Stitch pressed edge of collar over neck seam. To keep the facing in place, stitch facing to shoulder seam over previous topstitching.



39. Turn lower edge of facing to **OUTSIDE**. Stitch across facing along 1-1/4" (3.2cm) hem allowance. Trim facing close to stitching. Trim skirt to within 5/8" (1.5cm) of inner edge of facing.



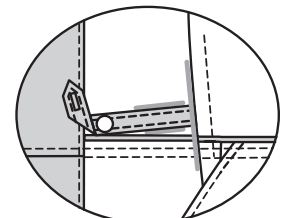
40. Turn facing to **INSIDE**; press, pressing up hem along marking. Press under 1/4" (6mm) on raw edge. Stitch hem in place starting at opening edge.



FINISHING

41. Make buttonhole on **OUTSIDE** of tab at marking. Sew button on **INSIDE** at small dot.

Thread tab end through buttonhole on **LEFT** front and button to itself when wearing.



20. SOUS-PIQUER le dessous de col. Retourner le col ; presser. Cranter le bord de l'encolure du corsage et de la parementure vers la piqûre de soutien. Sur l'ENDROIT, épingler le col (côté dessous de col) sur le bord de l'encolure, en faisant coïncider les milieux et en plaçant le petit cercle sur la couture d'épaule. Bâtir les deux pièces du col et de la parementure sur le bord de l'encolure du devant jusqu'au petit cercle. Bâtir uniquement la pièce de la parementure de col sur le bord de l'encolure restant entre les petits cercles.

21. Piquer le corsage devant et le corsage dos sur les bords du côté en faisant une **COUTURE ANGLAISE**. Presser la couture vers le dos.

22. Piquer les bords de dessous de bras de la manche en faisant une **COUTURE ANGLAISE**. Presser la couture vers le dos.

23. Piquer ensemble les extrémités à encoche de la PAREMENTURE DE MANCHE (11). Rentrer au fer 1.3 cm sur le bord sans encoche. Couper à 6 mm. Sur l'ENDROIT, épingler la parementure sur la manche, en faisant coïncider les coutures et les encoches. Piquer. **COUPER LA COUTURE**.

24. SOUS-PIQUER la parementure. Retourner la parementure vers l'INTÉRIEUR ; presser. **PIQUER LE BORD** près du bord intérieur pressé.

25. Retourner la manche à l'ENDROIT. Tenir le corsage à l'ENVERS avec l'emmanchure vers vous. ENDROIT CONTRE ENDROIT, épingler la manche sur le bord de l'emmanchure ayant le petit cercle du milieu sur la couture d'épaule, en faisant coïncider les coutures de dessous de bras, les encoches et les petits cercles restants. Bâtir. Piquer, puis piquer à 3 mm de la première piqûre. Couper la couture à 3 mm. Piquer au point zigzag les bords non finis pour finir. Presser la couture vers la manche.

JUPE

26. Pour renforcer le bord de la parementure de POCHE (16) sur les grands cercles, piquer sur la ligne de couture sur environ 2.5 cm de chaque côté du petit et du grand cercle, en piquant à travers les cercles, comme illustré.

27. ENDROIT CONTRE ENDROIT, épingler la parementure de POCHE sur la JUPE DEVANT DROIT (12), en faisant coïncider les grands cercles, ayant les bords non finis au même niveau. Piquer entre les grands cercles. Cranter la valeur de couture vers la piqûre sur les grands cercles. **COUPER LA COUTURE**.

28. SOUS-PIQUER la parementure de poche. Presser les coutures vers la poche, en pressant la poche vers l'extérieur.

29. Épingler la poche sur la parementure de poche ENVERS CONTRE ENVERS, en faisant coïncider les grands cercles et les encoches. Piquer le bord à double encoche en faisant une **COUTURE ANGLAISE**.

30. Épingler le bord fini de la poche à l'opposé de la valeur de couture du côté. Épingler la jupe devant droit et la jupe côté dos sur les coutures latérales ENVERS CONTRE ENVERS, en faisant coïncider les encoches. Piquer les coutures latérales en faisant une **COUTURE ANGLAISE**.

31. Presser la poche vers le devant droit ; bâtir ensemble les bords supérieurs. Piquer de la même façon la poche et les coutures de la JUPE DEVANT GAUCHE (13).

32. Piquer la JUPE DOS (14) et le bord du côté dos de la jupe côté dos en faisant une **COUTURE ANGLAISE**. Presser la couture vers le dos.

33. Pour former des plis étroits sur l'ENVERS du dos et du côté dos, amener les lignes pointillées l'une sur l'autre. Piquer le long des lignes pointillées jusqu'aux petits cercles. Presser les plis vers le milieu dos. Bâtir le bord supérieur.

34. Pour former des plis larges sur l'ENVERS du devant et du côté dos, amener les lignes pointillées l'une sur l'autre. Piquer le long des lignes pointillées jusqu'aux petits cercles. Presser le pli à plat en amenant la piqûre vers le milieu. Bâtir le bord non fini.

35. Déplier la parementure. ENDROIT CONTRE ENDROIT et ayant les bords non finis au même niveau, épingler le bord supérieur de la jupe sur le bord inférieur du corsage, en faisant coïncider les milieux, les coutures et les encoches. Piquer. Presser la couture vers le corsage. Sur l'ENDROIT, **SURPIQUER** le corsage à l'opposé de la couture. Finir le bord intérieur de la parementure de jupe comme décrit pour le corsage, en raccordant avec la piqûre précédente.

36. Pour former les plis étroits restants sur l'ENVERS du corsage côté devant et jupe, amener les lignes pointillées vers la ligne de couture du côté devant, en faisant coïncider les petits cercles. Piquer le long des lignes pointillées. Presser les plis vers le devant.

PAREMENTURE

37. Retourner le prolongement devant vers l'EXTÉRIEUR le long de la ligne de pliure, en formant la parementure. Bâtir sur le bord de l'encolure depuis la pliure jusqu'aux petits cercles intérieurs. Piquer tout le bord de l'encolure, en arrêtant la piqûre aux petits cercles intérieurs, en veillant à ne pas saisir le bord libre du col.

38. Retourner la parementure vers l'INTÉRIEUR, en retournant la couture d'encolure vers le col ; presser. Piquer le bord pressé du col par-dessus la couture d'encolure. Pour maintenir la parementure en place, piquer la parementure sur la couture d'épaule par-dessus la surpiqûre précédente.

39. Retourner le bord inférieur de la parementure vers l'EXTÉRIEUR. Piquer à travers la parementure le long de la valeur de couture d'ourlet de 3.2 cm. Égaliser la parementure près de la piqûre. Recouper la jupe à 1.5 cm du bord intérieur de la parementure.

40. Retourner la parementure vers l'INTÉRIEUR ; presser, en relevant l'ourlet au fer le long de la marque. Rentrer au fer 6 mm sur le bord non fini. Piquer l'ourlet en place en commençant au bord de l'ouverture.

FINITION

41. Faire la boutonnière sur l'ENDROIT de la patte sur la marque. Coudre le bouton sur l'ENVERS, sur le petit cercle. Faire passer l'extrémité de la patte à travers la boutonnière sur le devant GAUCHE et boutonner sur lui-même au moment de porter le vêtement.

42. Faire les boutonnières sur les marques du devant DROIT et du devant GAUCHE à travers toute l'épaisseur. Coudre les boutons sur les petits cercles du devant GAUCHE.

43. Fixer le revers droit sur la couture du côté devant, de façon invisible.