

FABRIC CUTTING LAYOUTS



Indicates Bustline, Waistline, Hipline and/or Biceps. Measurements refer to circumference of Finished Garment (Body Measurement + Wearing Ease + Design Ease). Adjust Pattern if necessary.

Lines shown are CUTTING LINES, however, 5/8" (1.5cm) SEAM ALLOWANCES ARE INCLUDED, unless otherwise indicated. See SEWING INFORMATION for seam allowance.

Find layout(s) by Garment/View, Fabric Width and Size. Layouts show approximate position of pattern pieces; position may vary slightly according to your pattern size.

All layouts are for with or without nap unless specified. For fabrics with nap, pile, shading or one-way design, use WITH NAP layout.

RIGHT SIDE OF PATTERN	WRONG SIDE OF PATTERN	RIGHT SIDE OF FABRIC	WRONG SIDE OF FABRIC

S/T = SIZE(S)/TAILLE(S)
***** = WITH NAP/AVEC SENS
S/L = SELVAGE(S)/LISIÈRE(S)
AS/TT = ALL SIZE(S)/TOUTES TAILLE(S)
****** = WITHOUT NAP/SANS SENS
F/P = FOLD/PLIURE
CF/PT = CROSSWISE FOLD/PLIURE TRAME

Position fabric as indicated on layout. If layout shows...

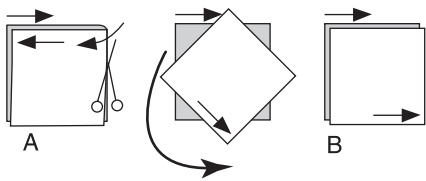
GRAINLINE—Place on straight grain of fabric, keeping line parallel to selvage or fold. ON “with nap” layout arrows should point in the same directions. (On Fur Pile fabrics, arrows point in direction of pile.)

SINGLE THICKNESS—Place fabric right side up. (For Fur Pile fabrics, place pile side down.)

DOUBLE THICKNESS

WITH FOLD—Fold fabric right sides together.

***** **WITHOUT FOLD**—With right sides together, fold fabric CROSSWISE. Cut fold from selvage to selvage (A). Keeping right sides together, turn upper layer completely around so nap runs in the same direction as lower layer.



FOLD—Place edge indicated exactly along fold of fabric. NEVER cut on this line.

When pattern piece is shown like this...

• Cut other pieces first, allowing enough fabric to cut this piece (A). Fold fabric and cut piece on fold, as shown (B).

★ Cut piece only once. Cut other pieces first, allowing enough fabric to cut this piece. Open fabric; cut piece on single layer.

Cut out all pieces along cutting line indicated for desired size using long, even scissor strokes, cutting notches outward.

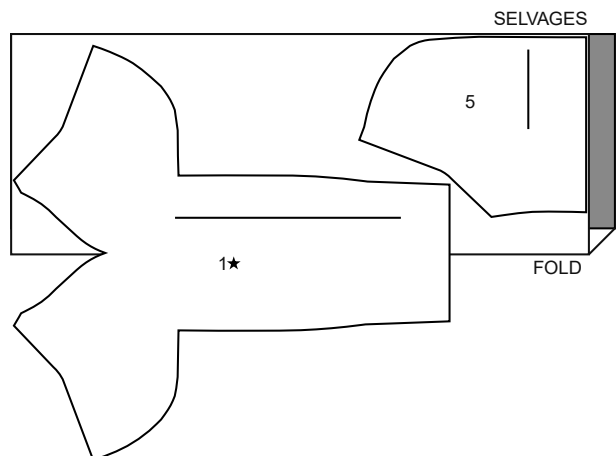
Transfer all markings and lines of construction before removing pattern tissue. (Fur Pile fabrics, transfer markings to wrong side.)

NOTE: Broken-line boxes (a! b! c!) in layouts represent pieces cut by measurements provided.

INTERFACING A,B / ENTOILAGE A,B

PIECES: 1,5

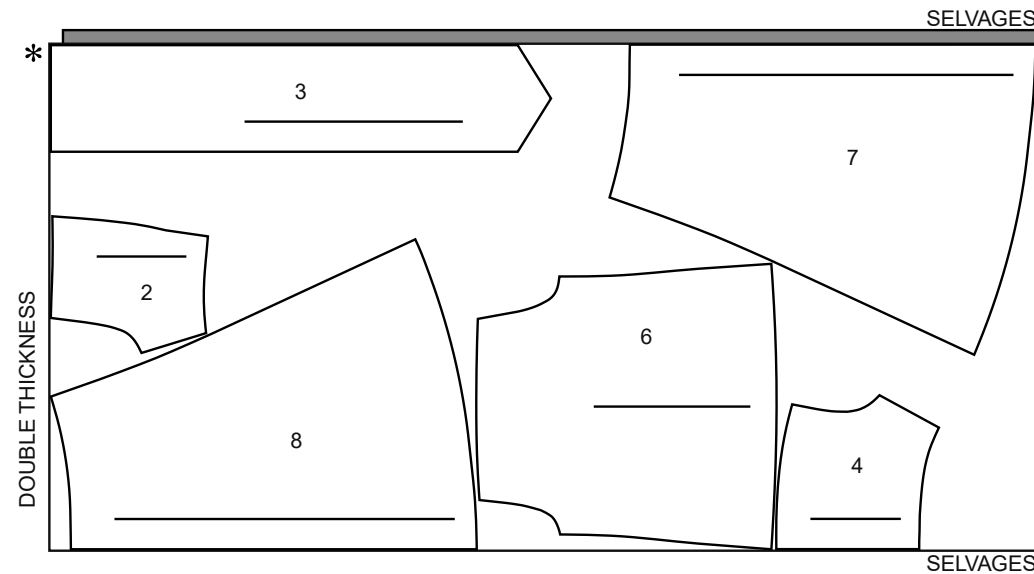
20" (51CM)
AS/TT



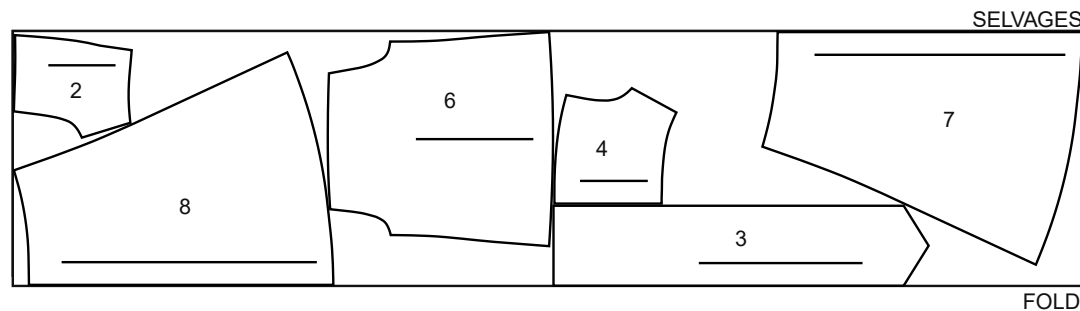
DRESS A / ROBE A

PIECES: 2,3,4,6,7,8

45" (115 cm) *
AS/TT



60" (150 cm) *
AS/TT

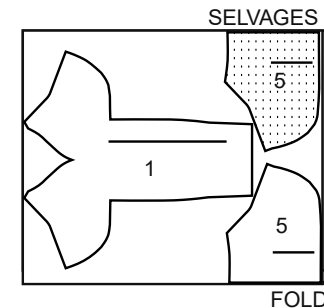


CONTRAST A (FRONT AND BACK YOKE)

CONTRASTE A (EMPIÈCEMENT DEVANT ET DOS)

PIECES: 1,5

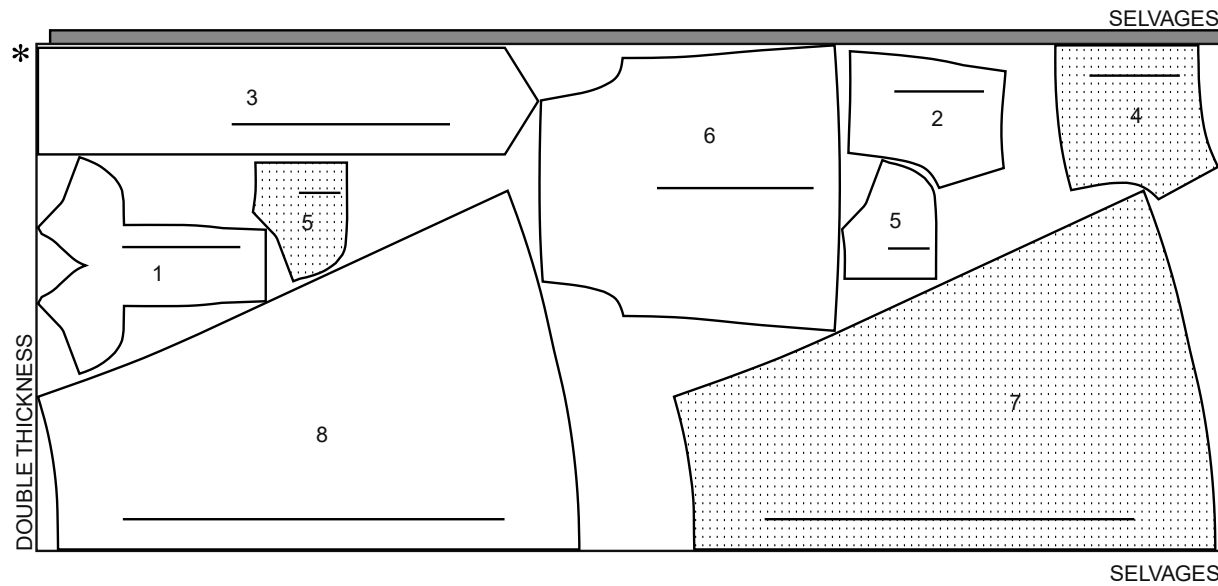
45", 60" (115 cm, 150 cm) *
AS/TT



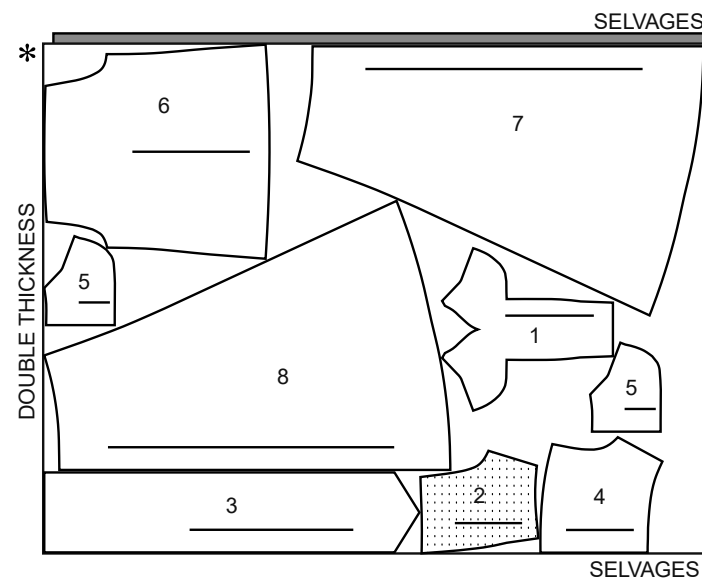
DRESS B / ROBE B

PIECES: 1,2,3,4,5,6,7,8

45" (115 cm) *
AS/TT



60" (150 cm) *
AS/TT



BODY MEASUREMENTS / MESURES DU CORPS

MISSES/JEUNE FEMME

Sizes/Tailles	6	8	10	12	14	16	18	20	22
Bust (ins)	30½	31½	32½	34	36	38	40	42	44
Waist	23	24	25	26½	28	30	32	34	37
Hip	32½	33½	34½	36	38	40	42	44	46
Bk. Wst Lgth.	15½	15¾	16	16¼	16½	16¾	17	17¼	17½
T. poitrine (cm)	78	80	83	87	92	97	102	107	112
T. taille	58	61	64	67	71	76	81	87	94
T. hanches	83	85	88	92	97	102	107	112	117
Nuque à taille	39.5	40	40.5	41.5	42	42.5	43	44	44

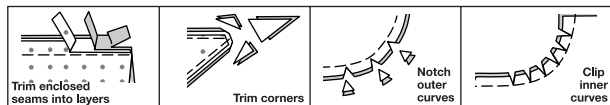
SEWING INFORMATION

5/8" (1.5cm) SEAM ALLOWANCES ARE INCLUDED,
(unless otherwise indicated)

ILLUSTRATION SHADING KEY

Right Side	Wrong Side	Interfacing	Lining	Underlining

Press as you sew. Press seams flat, then press open, unless otherwise instructed. Clip seam allowances, where necessary, so they lay flat.



GLOSSARY

Sewing terms appearing in **BOLD TYPE** in Sewing Instructions are explained below.

EDGESTITCH - Stitch close to finished edge or seam.

OPTIONAL FOR HEMS: Apply Seam Binding.

GATHER - Stitch along seamline and again 1/4" (6mm) away in seam allowance, using long machine stitches. Pull thread ends when adjusting to fit.

NARROW HEM - Turn in hem; press, easing in fullness if necessary. Open out hem. Turn in again so raw edge is along crease; press. Turn in along crease; stitch.

REINFORCE - Stitch along seamline where indicated in sewing instructions, using small machine stitches.

SLIPSTITCH - Slide needle through a folded edge, then pick up a thread of underneath fabric.

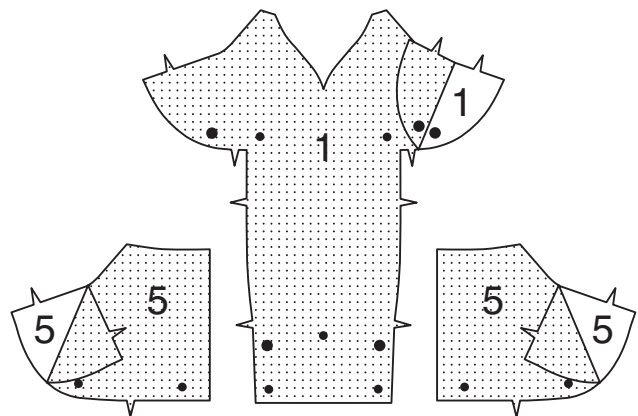
UNDERSTITCH - Open out facing or underside of garment; stitch to seam allowance close to seam.

DRESS A, B

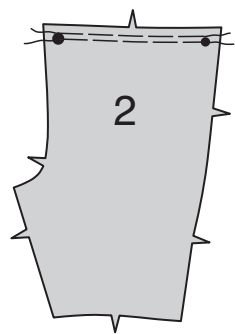
NOTE: Illustrated for **View A**, unless otherwise indicated.

BODICE

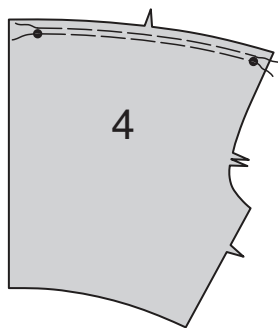
1. Pin **INTERFACING** to wrong side of each matching **FABRIC** section. Fuse, following manufacturer's instructions.



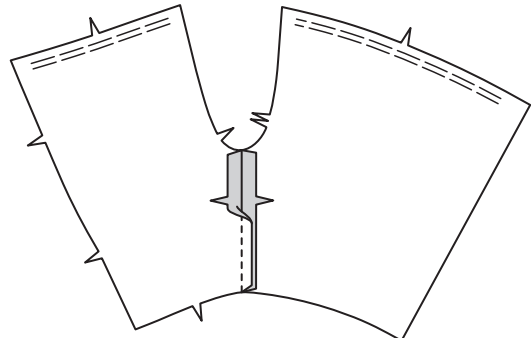
2. **GATHER** upper edge of **BODICE FRONT** (2) between large and small dots, as shown.



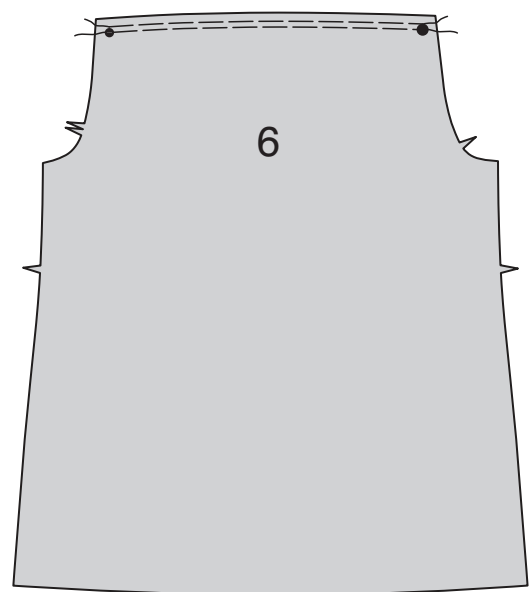
3. **GATHER** upper edge of **BODICE BACK** (4) between small dots.



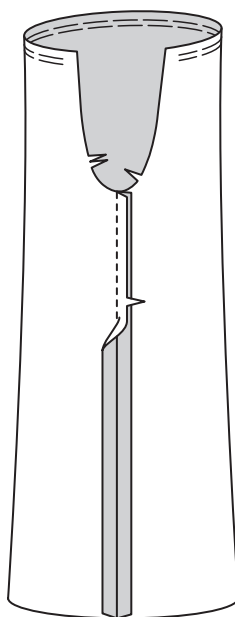
4. Stitch bodice front sections to bodice back sections at sides.



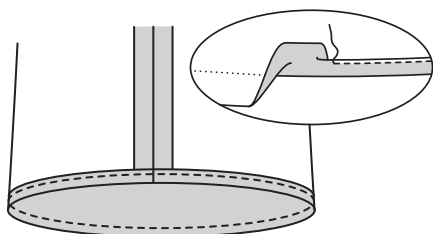
5. **GATHER** upper edge of **SLEEVE** (6) between small and large dots, as shown.



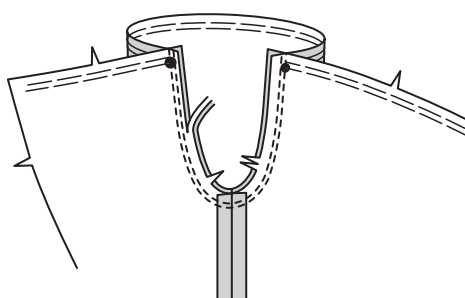
6. Stitch sleeve seam.



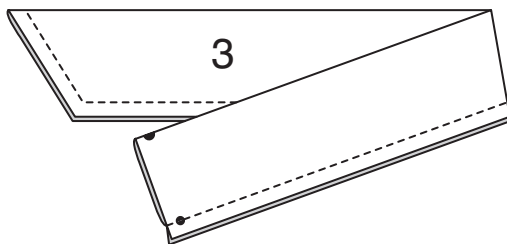
7. Make 5/8" (1.5cm) **NARROW HEM** at lower edge of sleeve.



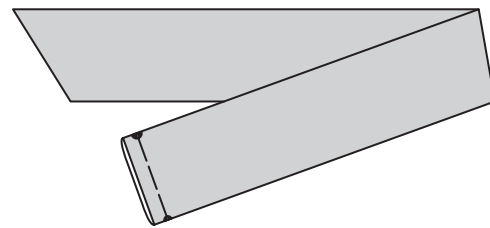
8. With right sides together, pin sleeve to armhole edge. Baste. Stitch. Stitch again 1/4" (6mm) away in seam allowance. Trim close to stitching. Press seam allowances flat. Turn seam toward sleeve.



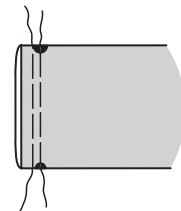
9. With right sides together, fold each **TIE ENDS** (3) along foldline. Stitch, leaving end with symbols open. Trim.



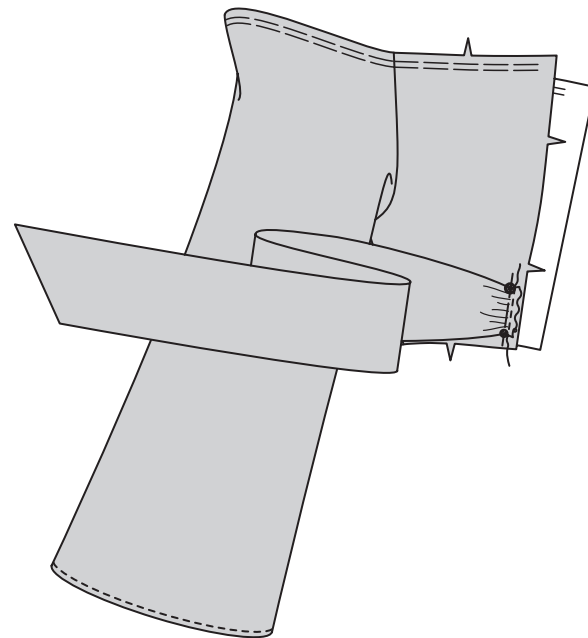
10. Turn. Press. Baste raw edges together.



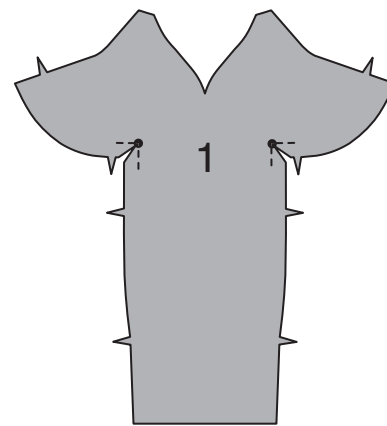
11. **GATHER** tie end between symbols.



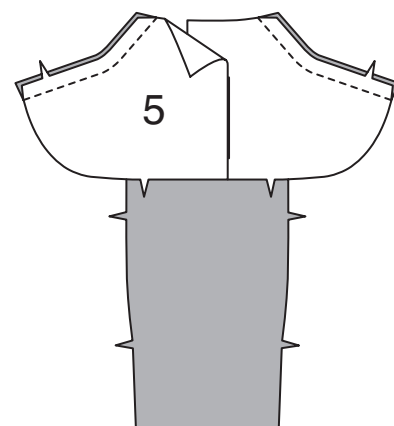
12. On outside, pin tie end to front edge of bodice, matching symbols, having raw edges even. Adjust gathers; baste.



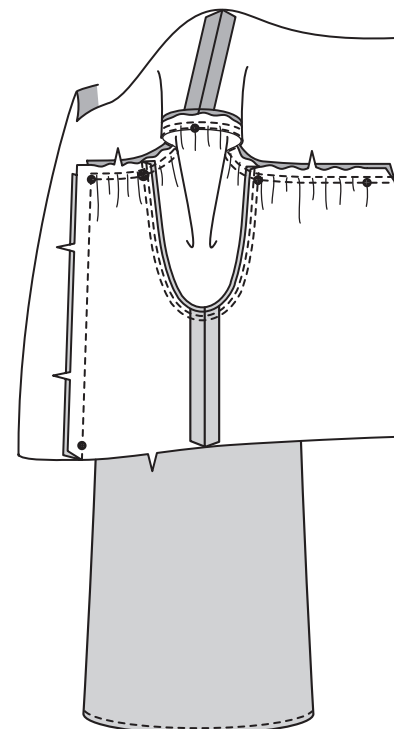
13. **REINFORCE** inner corners of **YOKE FRONT** (1) sections. Clip to small circles.



14. Stitch uninterfaced **YOKE BACK** (5) and yoke front sections together at shoulders, as shown. **NOTE:** Interfaced yoke sections will be used as facing.

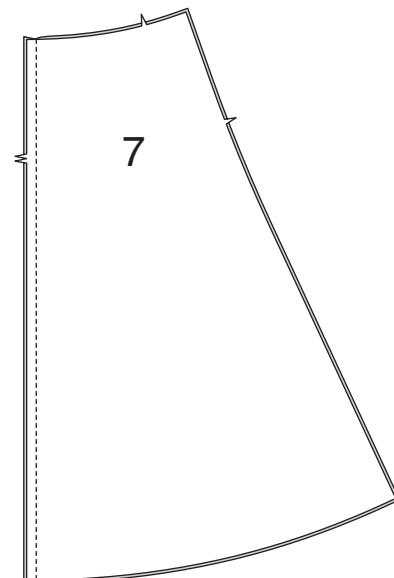


15. Pin yoke to front and upper edges of bodice, matching symbols, placing shoulder seam at small dot on sleeve, as shown. Adjust gathers; baste. Stitch, pivoting at small circles on yoke front. Trim. Press seam toward yoke.

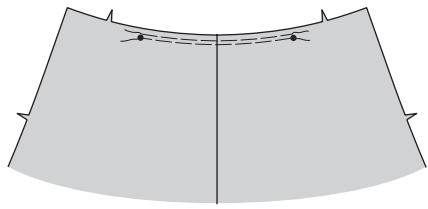


SKIRT

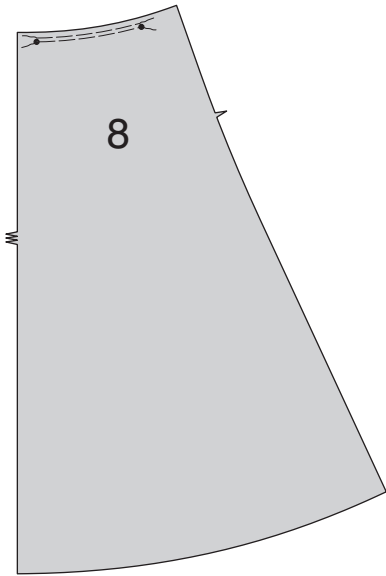
16. Stitch **SKIRT FRONT** (7) sections together at center front.



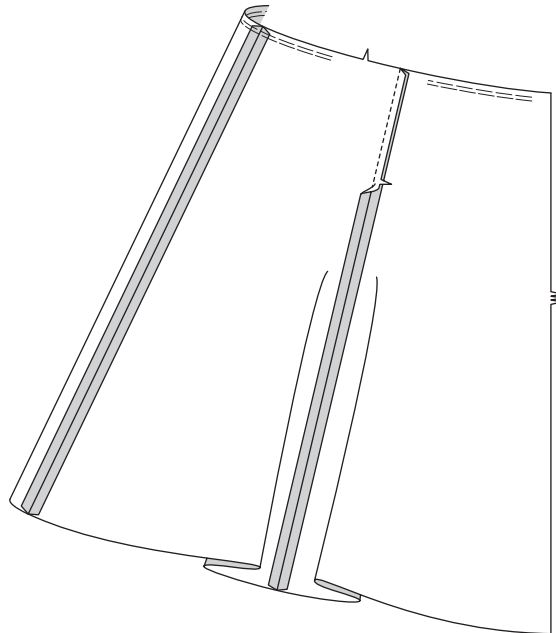
17. GATHER upper edge of skirt front between small dots.



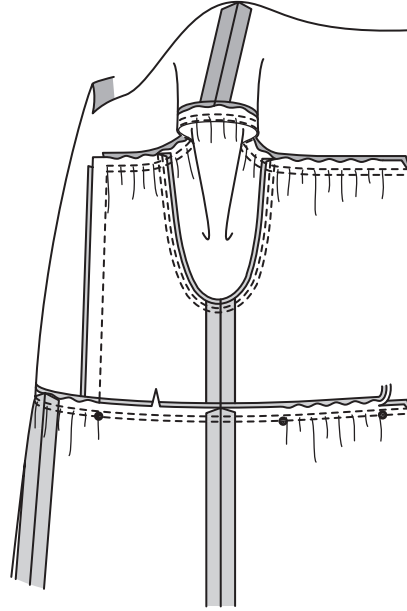
18. GATHER upper edge of SKIRT BACK (8) between small dots.



19. Stitch skirt back sections to skirt front at sides.



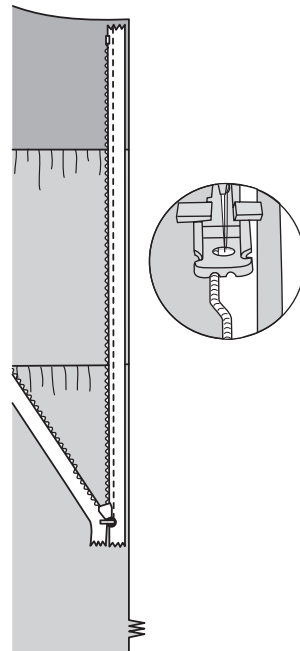
20. Pin bodice to skirt, matching centers and symbols, and keeping tie ends free. Adjust gathers; baste. Stitch. Stitch again 1/4" (6mm) away in seam allowance. Trim close to stitching. Press seam toward bodice.



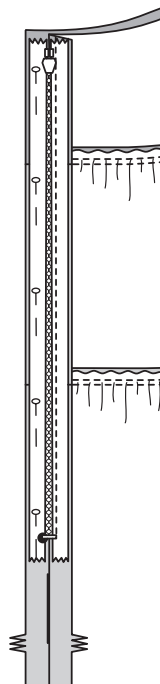
ZIPPER AND FINISHING

NOTE: Use special invisible zipper foot when stitching invisible zipper.

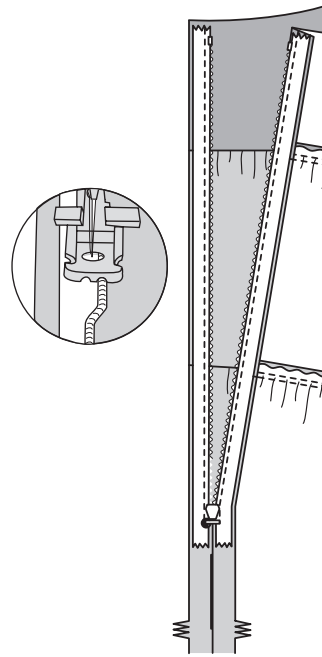
21. Open zipper. On outside, pin zipper to left back opening edge, face down in seam allowance, placing zipper tape 1/4" (6mm) down from upper edge of fabric and zipper teeth on seamline. Position left-hand groove of zipper foot over teeth; stitch close to teeth, ending at large dot.



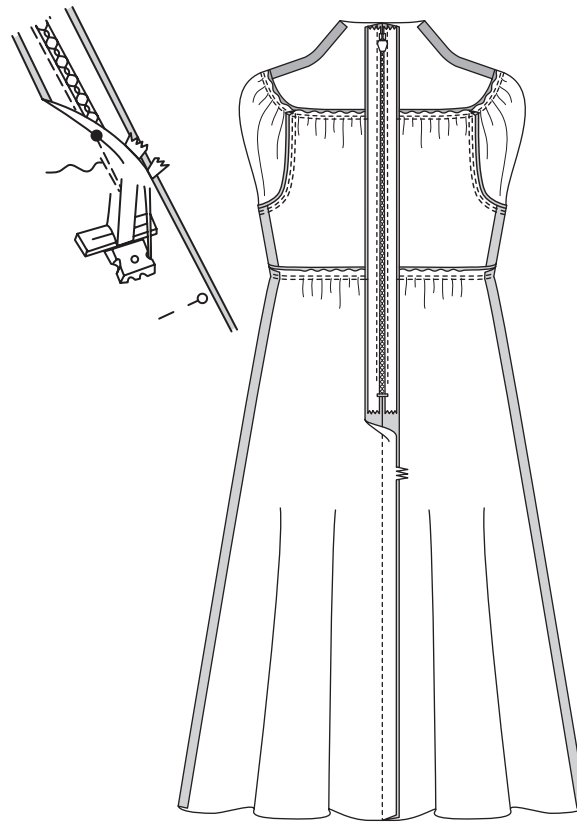
22. Close zipper. Pin remaining zipper tape to right back opening edge, placing zipper teeth on seamline.



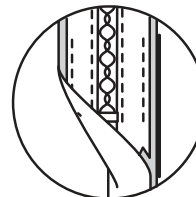
23. Open zipper. Position right-hand groove of zipper foot over teeth; stitch to large dot.



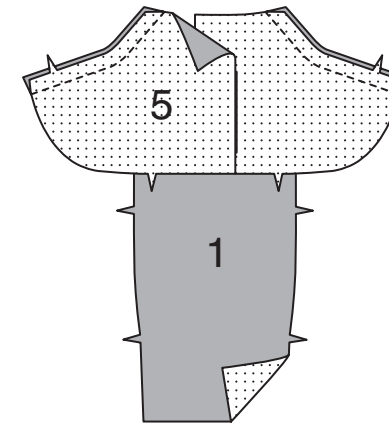
24. Close zipper. Slide zipper foot to the left. Pin back sections together below zipper. Position and lower needle slightly above and to the left of zipper stitching at large circle. Stitch center back seam below large dot.



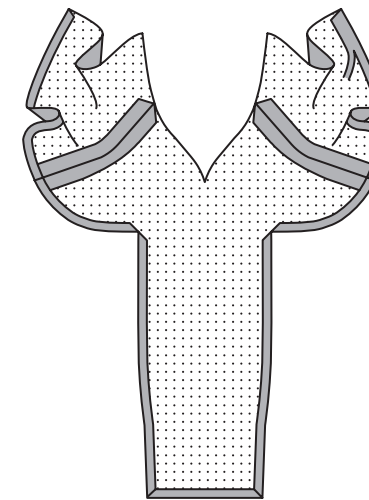
25. Stitch or hand sew each end of zipper tape to seam allowances, keeping back free when stitching.



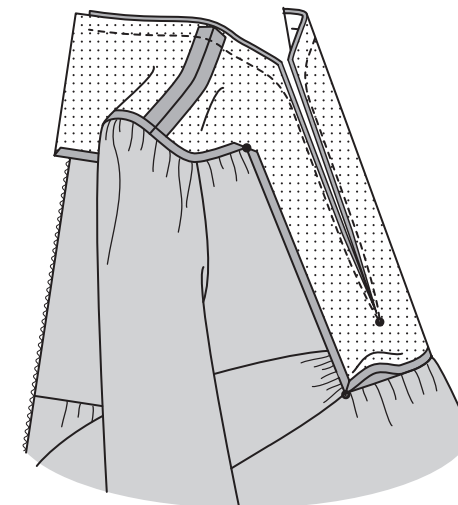
26. Stitch yoke back FACING (5) sections to yoke front FACING (1) at shoulders.



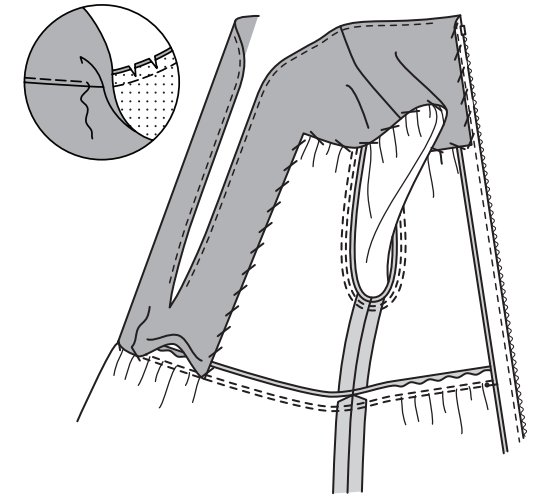
27. Turn in seam allowances on inner and lower edges of facing, diagonally folding corners, as shown. Press, easing in fullness. Trim pressed seam allowances to 3/8" (1cm).



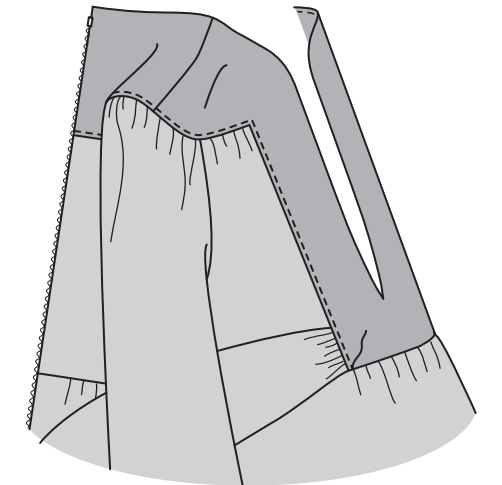
28. With right sides together, pin facing to yoke, matching centers. Stitch, continuing along stitching line, pivoting at small dot. Slash between stitching to small dot. Trim.



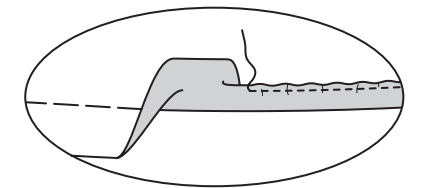
29. UNDERSTITCH facing as far as possible. Turn facing to inside, turning in back edges to clear zipper teeth. Press. **SLIPSTITCH** back edges to zipper tape and pressed edges over seam.



30. EDGESTITCH inner edges of yoke, as shown.



31. Stitch 1/4" (6mm) from lower edge of dress, using long machine stitches. Turn up 5/8" (1.5cm) hem, turning in 1/4" (6mm) on raw edge. Pull thread to ease in fullness. Stitch. Press.



32. Sew hook and eye to back opening edges above zipper, as shown.

