

## FABRIC CUTTING LAYOUTS

⊕ Indicates Bustline, Waistline, Hipline and/or Biceps. Measurements refer to circumference of Finished Garment (Body Measurement + Wearing Ease + Design Ease). Adjust Pattern if necessary.

Lines shown are CUTTING LINES, however, 5/8" (1.5cm) SEAM ALLOWANCES ARE INCLUDED, unless otherwise indicated. See SEWING INFORMATION for seam allowance.

Find layout(s) by Garment/View, Fabric Width and Size. Layouts show approximate position of pattern pieces; position may vary slightly according to your pattern size.

All layouts are for with or without nap unless specified. For fabrics with nap, pile, shading or one-way design, use WITH NAP layout.

RIGHT SIDE OF PATTERN	WRONG SIDE OF PATTERN	RIGHT SIDE OF FABRIC	WRONG SIDE OF FABRIC
-----------------------	-----------------------	----------------------	----------------------

S/T = SIZE(S)/TAILLE(S)  
 \* = WITH NAP/AVEC SENS  
 S/L = SELVAGE(S)/LISIÈRE(S)  
 AS/TT = ALL SIZE(S)/TOUTES TAILLE(S)  
 \*\* = WITHOUT NAP/SANS SENS  
 F/P = FOLD/PLIURE  
 CF/PT = CROSSWISE FOLD/PLIURE TRAME

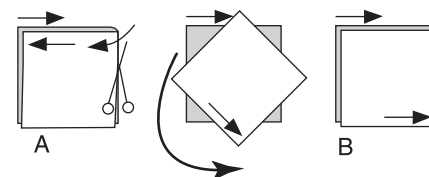
Position fabric as indicated on layout. If layout shows...  
**GRAINLINE**—Place on straight grain of fabric, keeping line parallel to selvage or fold. ON "with nap" layout arrows should point in the same directions. (On Fur Pile fabrics, arrows point in direction of pile.)

**SINGLE THICKNESS**—Place fabric right side up. (For Fur Pile fabrics, place pile side down.)

### DOUBLE THICKNESS

WITH FOLD—Fold fabric right sides together.

\* WITHOUT FOLD—With right sides together, fold fabric CROSSWISE. Cut fold from selvage to selvage (A). Keeping right sides together, turn upper layer completely around so nap runs in the same direction as lower layer.



**FOLD**—Place edge indicated exactly along fold of fabric. NEVER cut on this line.

When pattern piece is shown like this...

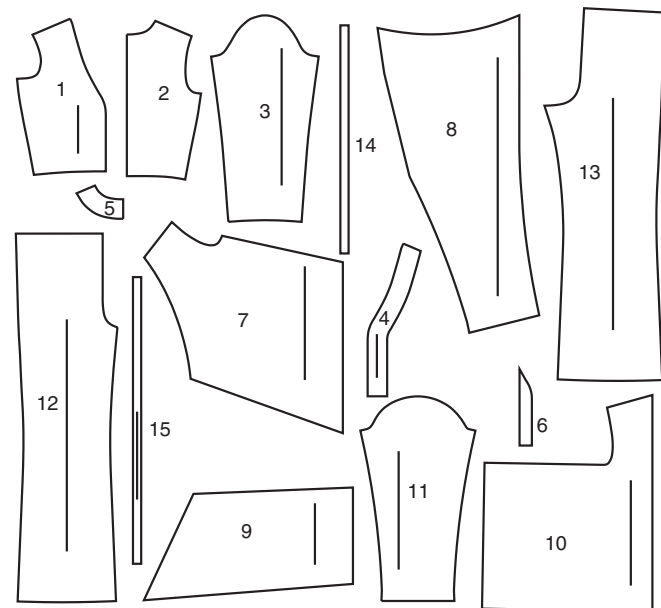
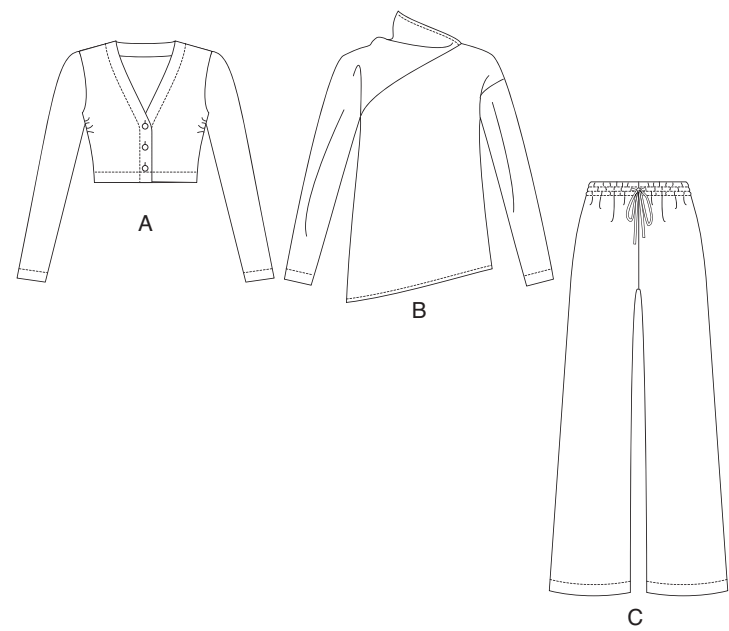
• Cut other pieces first, allowing enough fabric to cut this piece (A). Fold fabric and cut piece on fold, as shown (B).

★ Cut piece only once. Cut other pieces first, allowing enough fabric to cut this piece. Open fabric; cut piece on single layer.

Cut out all pieces along cutting line indicated for desired size using long, even scissor strokes, cutting notches outward.

Transfer all markings and lines of construction before removing pattern tissue. (Fur Pile fabrics, transfer markings to wrong side.)

**NOTE:** Broken-line boxes ( a! b! c! ) in layouts represent pieces cut by measurements provided.



- |                           |                                |
|---------------------------|--------------------------------|
| 1 FRONT A                 | 1 DEVANT A                     |
| 2 BACK A                  | 2 DOS A                        |
| 3 SLEEVE A                | 3 MANCHE A                     |
| 4 FRONT FACING A          | 4 PAREMENTURE DEVANT A         |
| 5 BACK NECK FACING A      | 5 PAREMENTURE D'ENCOLURE DOS A |
| 6 GUIDE FOR BUTTONHOLES A | 6 GUIDE POUR BOUTONNIÈRES A    |
| 7 FRONT B                 | 7 DEVANT B                     |
| 8 YOKE AND SLEEVE B       | 8 EMPÏÈCEMENT ET MANCHE B      |
| 9 RIGHT BACK B            | 9 DOS DROIT B                  |
| 10 LEFT BACK B            | 10 DOS GAUCHE B                |
| 11 LEFT SLEEVE B          | 11 MANCHE GAUCHE B             |
| 12 FRONT C                | 12 DEVANT C                    |
| 13 BACK C                 | 13 DOS C                       |
| 14 GUIDE FOR ELASTIC C    | 14 GUIDE POUR ÉLASTIQUE C      |
| 15 DRAWSTRING C           | 15 CORDON DE COULISSE C        |

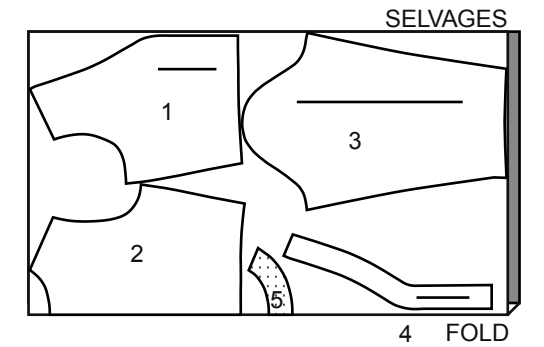
## BODY MEASUREMENTS / MESURES DU CORPS

Sizes/Tailles	MISSES/JEUNE FEMME					
	XS/TP	S/P	M/M	L/G	XL/TG	XXL/TTG
Bust (ins)	29½-30½	31½-32½	34-36	38-40	42-44	46-48
Waist	22-23	24-25	26½-28	30-32	34-37	39-41½
Hip	31½-32½	33½-34½	36-38	40-42	44-46	48-50
Bk. Wst Lgth.	15¼-15½	15¾-16	16¼-16½	16¾-17	17¼-17½	17¾-18
T. poitrine (cm)	75-78	80-83	87-92	97-102	107-112	117-122
T. taille	56-58	61-64	67-71	76-81	87-94	97-104
T. hanches	80-83	85-88	92-97	102-107	112-117	122-127
Nuque à taille	39-39.5	40-40.5	41.5-42	42.5-43	44-44.5	45-46

## CARDIGAN A / CARDIGAN A

PIECES: 1,2,3,4,5

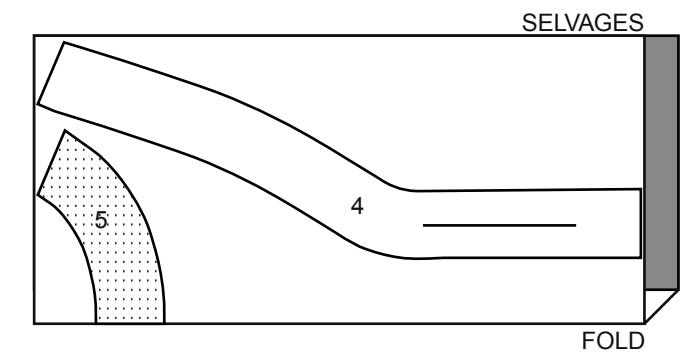
60" (150 cm) \*  
 AS/TT



## INTERFACING A / ENTOILAGE A

PIECES: 4,5

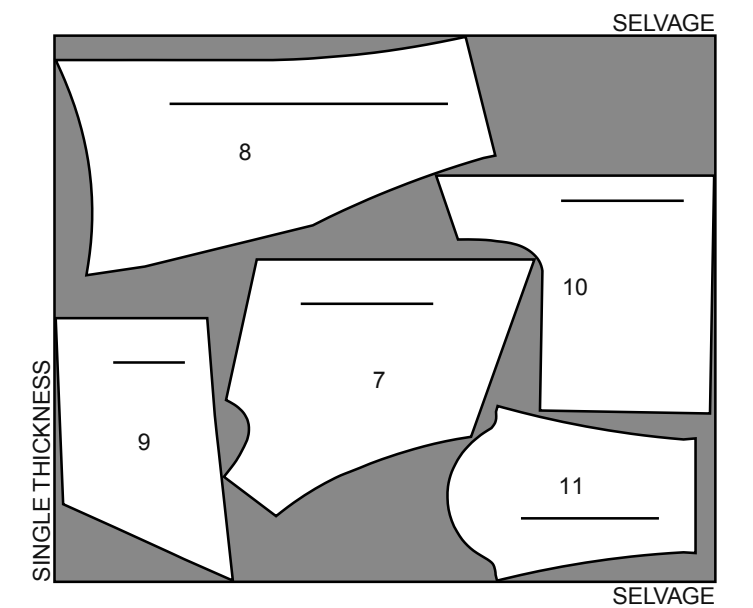
20" (51cm)  
 AS/TT



## TUNIC B / TUNIQUE B

PIECES: 7,8,9,10,11

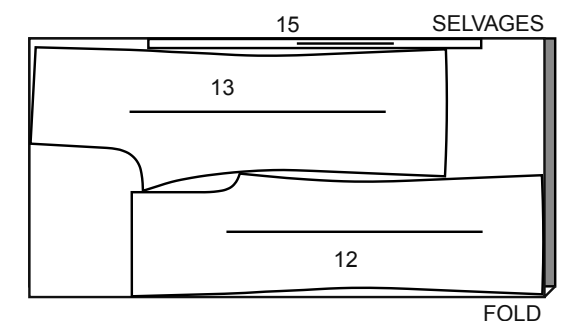
60" (150 cm) \*  
 AS/TT



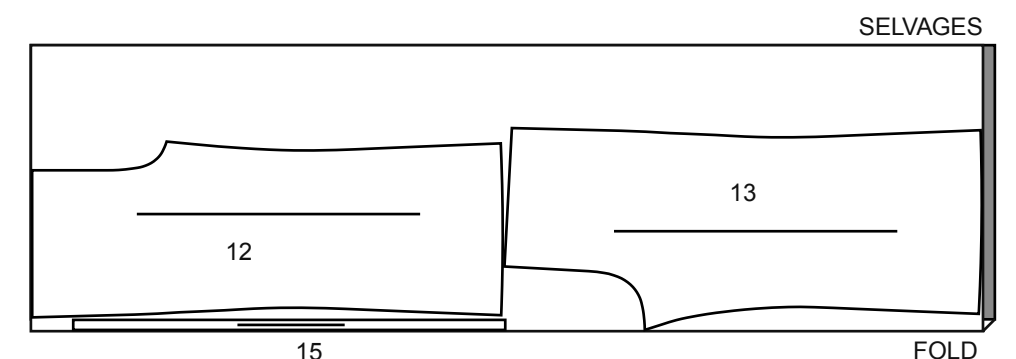
## PANTS C / PANTALON C

PIECES: 12,13,15

60" (150 cm) \*  
 S/T  
 XS/TP-S/P-M/M



60" (150 cm) \*  
 S/T  
 L/G-XL/TG-XXL/TTG



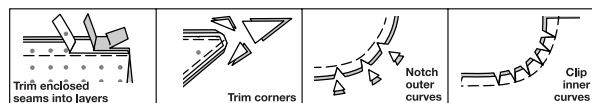
## SEWING INFORMATION

**5/8" (1.5cm) SEAM ALLOWANCES ARE INCLUDED,**  
 (unless otherwise indicated)

### ILLUSTRATION SHADING KEY

Right Side	Wrong Side	Interfacing	Lining	Underlining

Press as you sew. Press seams flat, then press open, unless otherwise instructed. Clip seam allowances, where necessary, so they lay flat.



## GLOSSARY

Sewing terms appearing in **BOLD TYPE** in Sewing Instructions are explained below.

**DOUBLE - STITCH** - Stitch seam along seamline; stitch again 1/4" (6mm) away in seam allowance using a straight stitch OR zigzag stitch; trim close to second stitching OR overlock seam.

**EASESTITCH** - Stitch along seamline, using long machine stitches. Pull thread ends when adjusting to fit.

**NOTE:** For sleeve caps, make a second row of long machine stitches 1/4" (6mm) away in seam allowance, for more control.

**GATHER** - Stitch along seamline and again 1/4" (6mm) away in seam allowance, using long machine stitches. Pull thread ends when adjusting to fit.

**NARROW HEM** - Turn in hem; press, easing in fullness if necessary. Open out hem. Turn in again so raw edge is along crease; press. Turn in along crease; stitch.

**TOPSTITCH** - On outside, stitch 1/4" (6mm) from edge, seam or previous stitching, using presser foot as guide, or stitch where indicated in instructions.

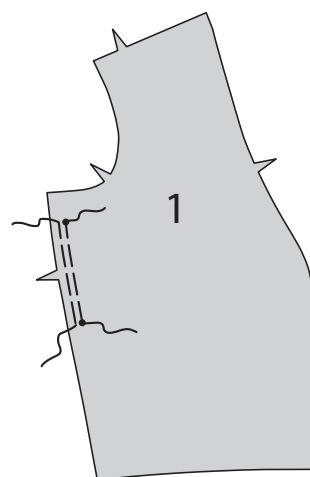
**UNDERSTITCH** - Open out facing or underside of garment; stitch to seam allowance close to seam.

## CARDIGAN A

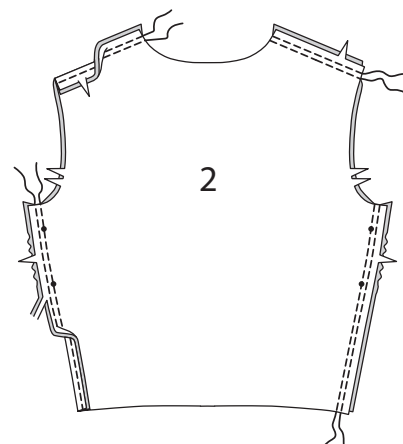
**NOTE:** Stretch fabric evenly in front and back of needle while stitching.

### FRONT AND BACK

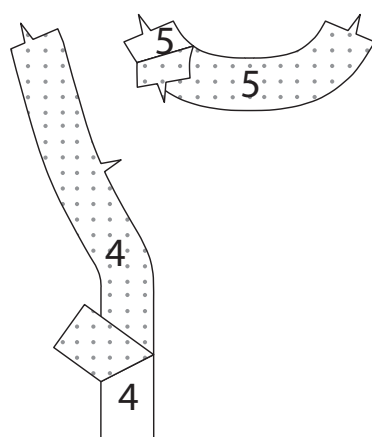
**1. GATHER** side edge of FRONT (1) between small dots.



**2.** Pin front sections and BACK (2) together at shoulders and sides. Adjust gathers. Stitch. Stitch again 1/4" (6mm) away in seam allowances. Press seams toward back.

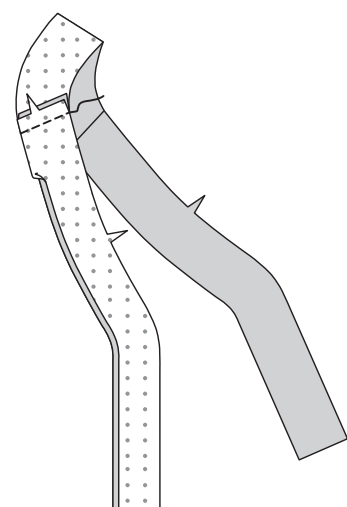


**3.** Fuse INTERFACING to wrong side of each FRONT FACING (4) and BACK NECK FACING (5).



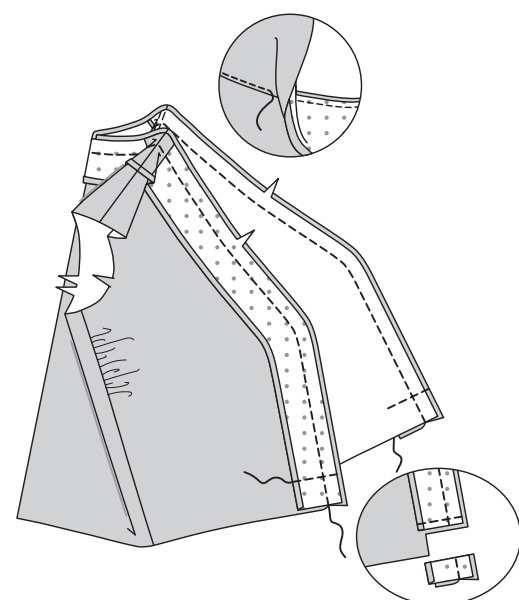
**4.** Stitch each front facing to back facing at shoulders.

Turn in 1/4" (6mm) on outer edges of facing. Press.

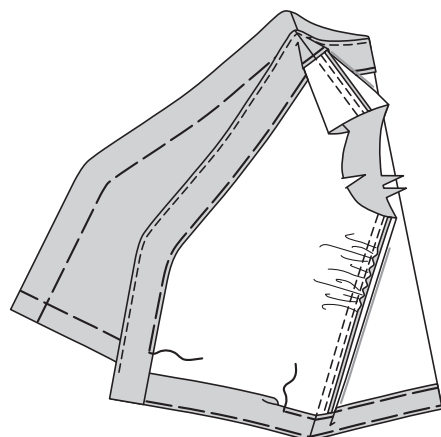


**5.** Pin facing to cardigan, matching centers and seams. Stitch. Stitch across facing 1 1/4" (3.2cm) above raw edge. Trim, as shown.

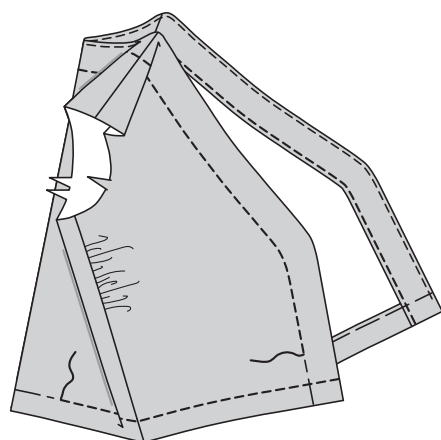
**UNDERSTITCH** facing as far as possible.



**6.** Turn facing to inside, turning up hem. Baste close to fold. Trim hem to an even width. Turn in 1/4" (6mm) on raw edge. Baste hem in place close to upper edge, as shown. Press. Baste facing close to pressed edge.

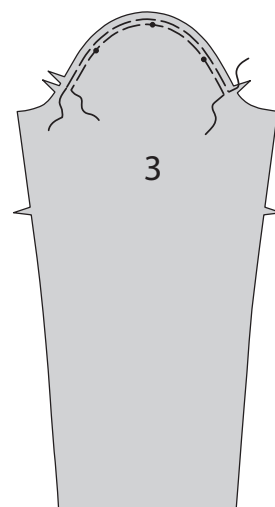


**7.** On outside, **TOPSTITCH** neck and front opening edge along basting. **TOPSTITCH** lower edge, continuing to opening edges.

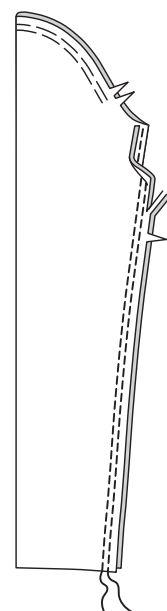


## SLEEVE

**8. EASESTITCH** upper edge of SLEEVE (3) between notches.

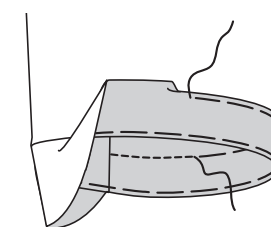


**9.** Stitch sleeve seam in **DOUBLE-STITCHED** seam. Press seam toward back.

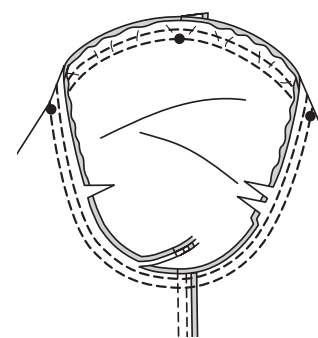


**10.** Turn up sleeve hem. Baste close to fold. Turn in 1/4" (6mm) on raw edge. Baste hem in place close to upper edge. Press.

**TOPSTITCH** hem along upper basting.



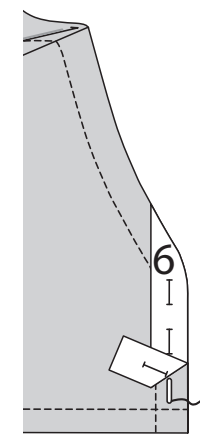
**11.** With right sides together, pin sleeve into armhole, placing center small dot at shoulder seam. Adjust ease; baste. Stitch. Stitch again 1/4" (6mm) away in seam allowance. Trim close to stitching. Press seam allowances flat. Turn seam toward sleeve.



## FINISHING

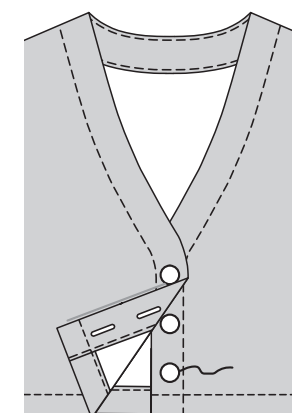
**12.** Place GUIDE FOR BUTTONHOLES (6) on right front, having edges of tissue even with finished edges of garment, as shown. Transfer markings.

Make buttonholes at markings.



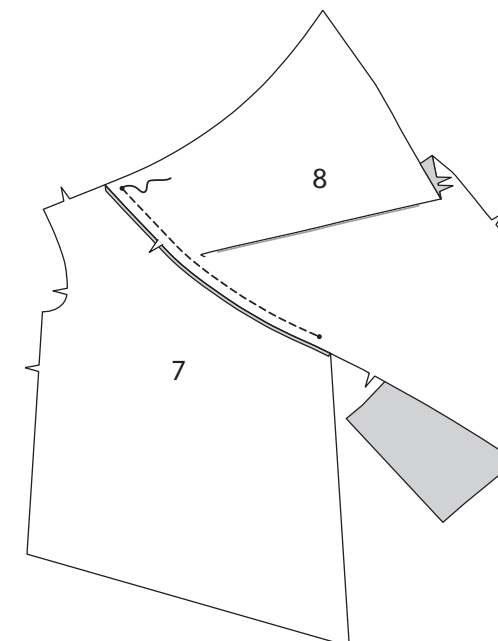
**13.** Lap opening edges, matching centers. Using buttonholes as guides, make button markings on left front.

Sew buttons at markings.

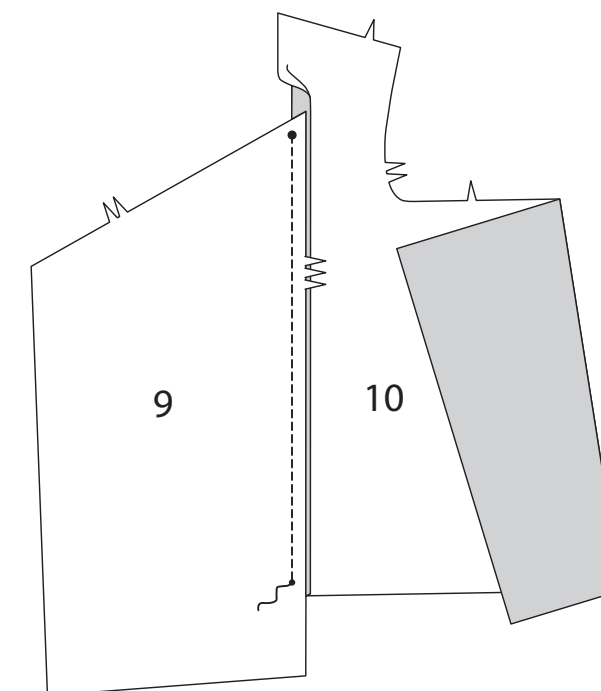


## TUNIC B

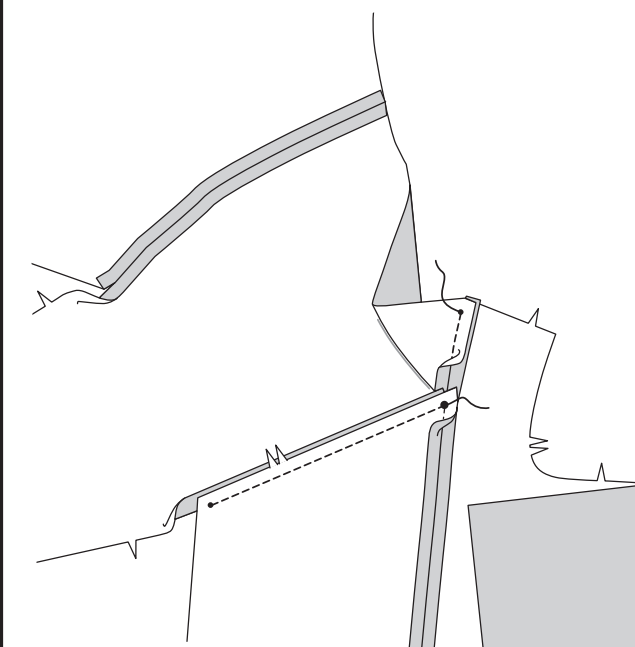
**1.** Pin upper edge of FRONT (7) to lower edge of YOKE AND SLEEVE (Right) (8) together, matching small dots. Stitch between small dots, as shown.



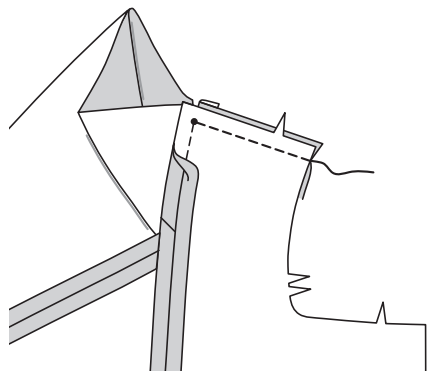
**2.** Stitch RIGHT BACK (9) to LEFT BACK (10) at back edge between large and small dots.



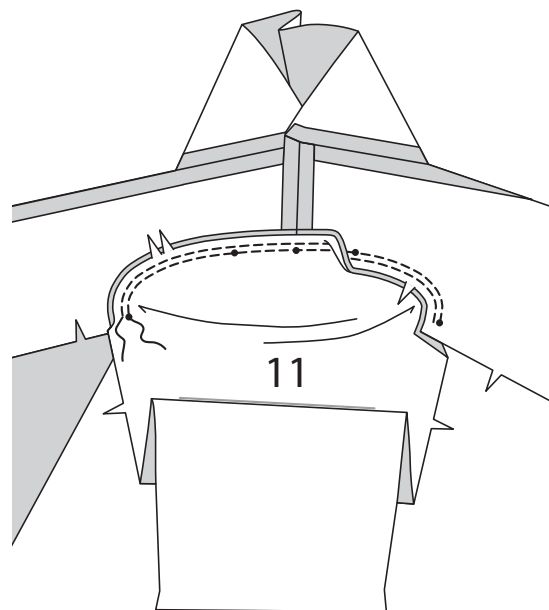
**3.** Pin upper edge of right back to lower edge of yoke and sleeve (Right) together, matching large and small dots. Stitch between small dots, breaking stitching at large dot, as shown.



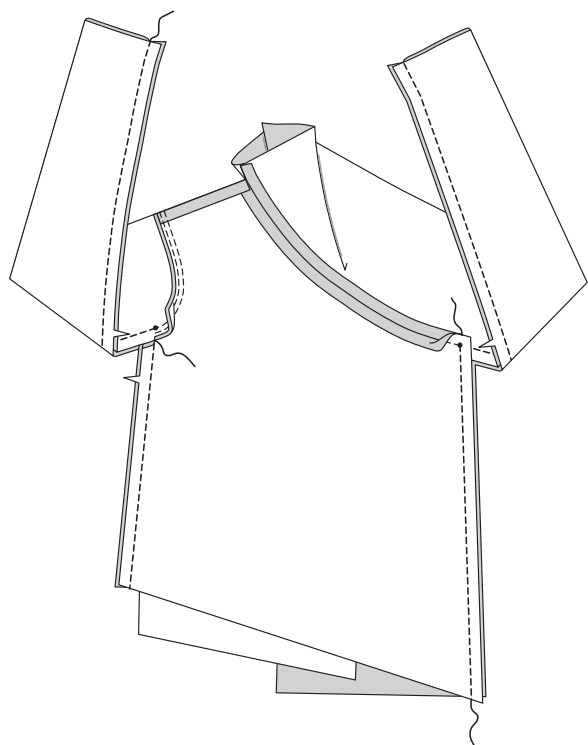
4. Stitch garment at left shoulder, as shown.



5. With right sides together, pin LEFT SLEEVE (11) to left armhole, placing center small dot at shoulder seam. Baste. Stitch between small dots. Stitch again 1/4" (6mm) away in seam allowance. Trim close to stitching. Press seam allowances flat. Turn seam toward sleeve.

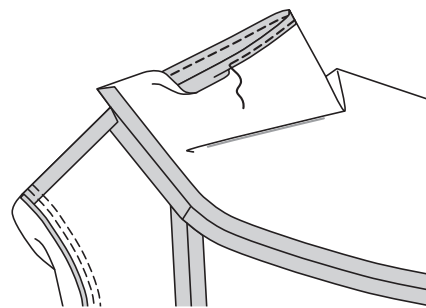


6. Pin front and back together at sides; pin sleeve edges together. Stitch in one continuous seam, breaking stitching at small dot, as shown.

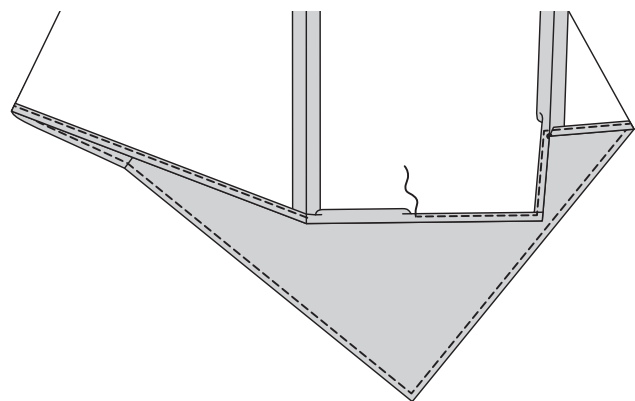


**FINISHING**

7. Make 5/8" (1.5cm) **NARROW HEM** at neck.

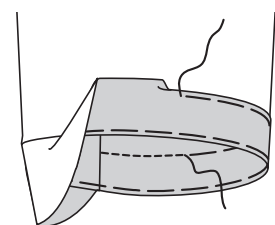


8. Make 5/8" (1.5cm) **NARROW HEM** at lower edge. Squaring stitching at corners.



9. Turn up sleeve hem. Baste close to fold. Turn in 1/4" (6mm) on raw edge. Baste hem in place close to upper edge. Press.

**TOPSTITCH** hem along upper basting.



**PANTS C**

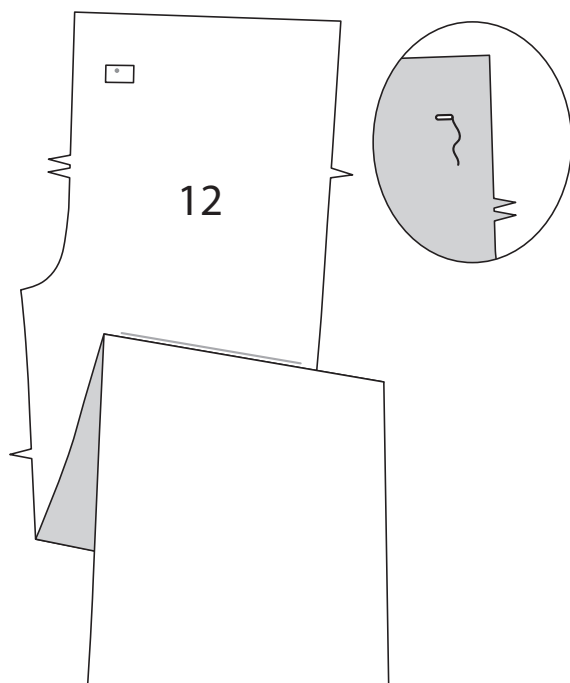
**NOTE:** Stretch fabric evenly in front and back of needle while stitching.

**FRONT AND BACK**

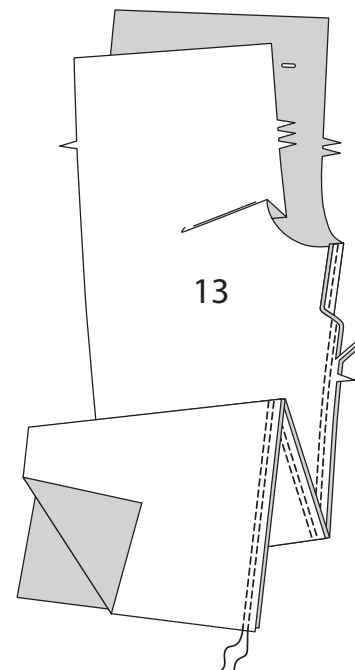
1. To reinforce underside of buttonhole in **FRONT** (12), cut one 1/2"x 1" (1.3cm x 2.5cm) remnant of interfacing.

On wrong side, center remnant over buttonhole marking. Fuse.

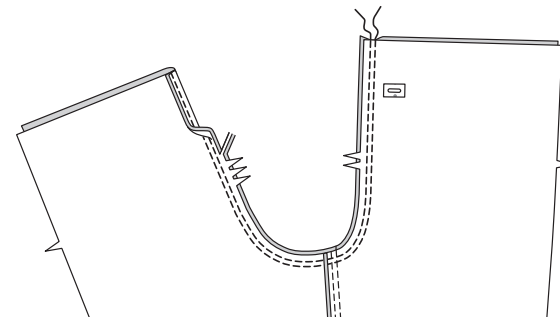
Make buttonhole in front at markings.



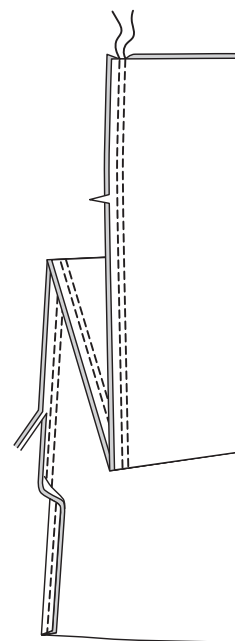
2. Stitch **BACK** (13) to front at inside leg edges, right sides together using a **DOUBLE-STITCHED** seam. Press seam allowances toward back.



3. Stitch center seam, matching inside leg seams using a **DOUBLE-STITCHED** seam. Press seam allowances to one side..

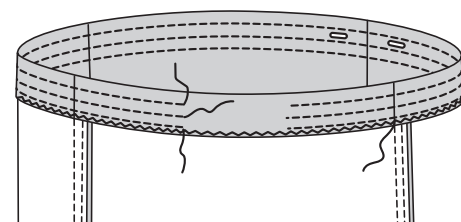


4. Stitch back to front at sides using a **DOUBLE-STITCHED** seam. Press seam allowances toward back.



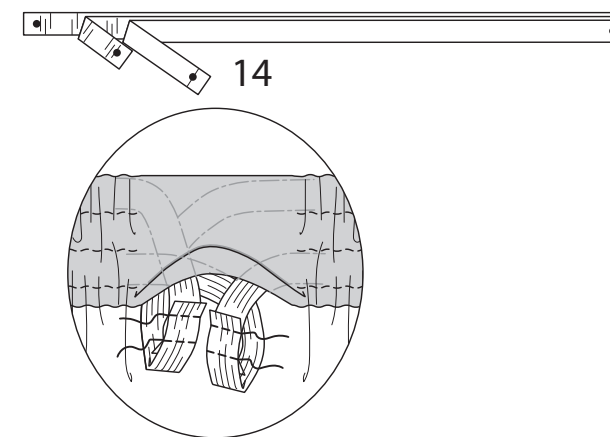
5. Finish upper edge of garment with a zigzag stitch or overedge using a serger.

To form casings, turn upper edge of pants to inside on foldline. Press. Stitch along stitching lines, leaving an opening to insert elastic..

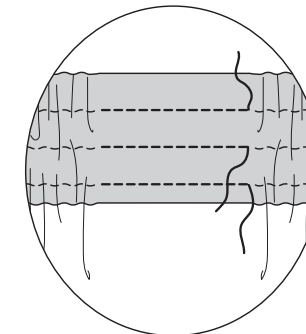


6. Cut two pieces of elastic, each using **GUIDE FOR ELASTIC** (14) pattern piece.

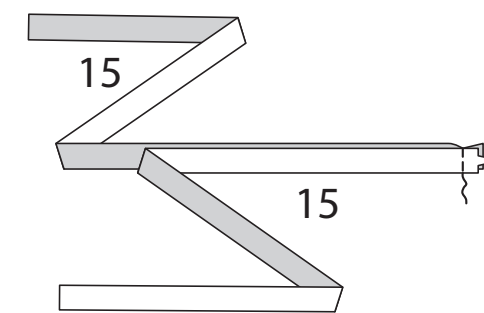
Insert elastic through upper and lower channels in casing. Lap ends. Hold with safety pin. Try on and adjust, if necessary. Stitch ends of elastic securely.



7. Stitch opening in casings, stretching elastic while stitching.



8. Stitch **DRAWSTRING** (15) sections together at notched end.

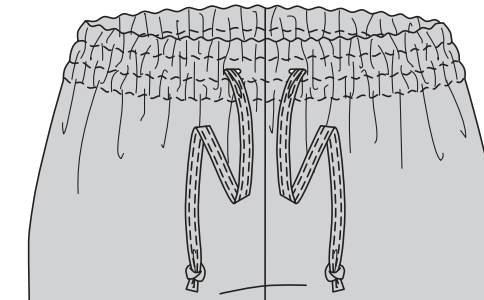


9. Turn in 1/4" (6mm) on long edges and ends of drawstring. Press.

With wrong sides together, fold drawstring in half lengthwise, having pressed edges even. Stitch close to all edges, as shown.



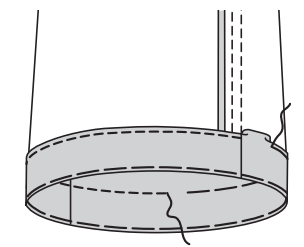
10. Insert drawstring through buttonholes on waist, having ends extending evenly. Knot ends of drawstring, as desired.



**FINISHING**

11. Turn up hem. Baste close to fold. Trim hem to an even width. Turn under 1/4" (6mm) on raw edge; press. Baste close to upper pressed edge.

**TOPSTITCH** hem in place along upper basting, as shown.



**FRANÇAIS**

**PLANS DE COUPE**

⊕ Indique: pointe de poitrine, ligne de taille, de hanches et/ou avantbras. Ces mesures sont basées sur la circonférence du vêtement fini. (Mesures du corps + Aisance confort + Aisance mode) Ajuster le patron si nécessaire.

Les lignes épaisses sont les **LIGNES DE COUPE**, cependant, des rentrés de 1.5cm sont compris, sauf si indiqué différemment. Voir **EXPLICATIONS DE COUTURE** pour largeur spécifiée des rentrés.

Choisir le(s) plan(s) de coupe selon modèle/largeur du tissu/taile. Les plans de coupe indiquent la position approximative des pièces et peut légèrement varier selon la taille du patron.

Les plans de coupe sont établis pour tissu avec/sans sens. Pour tissu avec sens, pelucheux ou certains imprimés, utiliser un plan de coupe **AVEC SENS**.

ENDROIT DU PATRON	ENVERS DU PATRON	ENDROIT DU TISSU	ENVERS DU TISSU

**S/T** = SIZE(S)/TAILLE(S)  
\* = WITH NAP/AVEC SENS  
**S/L** = SELVAGE(S)/LISIÈRE(S)  
**AS/TT** = ALL SIZE(S)/TOUTES TAILLE(S)  
\*\* = WITHOUT NAP/SANS SENS  
**F/P** = FOLD/PLIURE  
**CF/PT** = CROSSWISE FOLD/PLIURE TRAME

Disposer le tissu selon le plan de coupe. Si ce dernier indique...

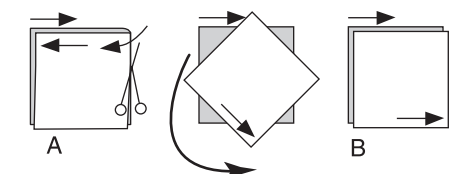
**DROIT FIL**—A placer sur le droit fil du tissu, parallèlement aux lisières ou au pli. Pour plan "avec sans," les flèches seront dirigées dans la même direction. (Pour fausse fourrure, placer la pointe de la flèche dans le sens descendant des poils.)

**SIMPLE EPAISSEUR**—Placer l'endroit sur le dessus. (Pour fausse fourrure, placer le tissu l'endroit dessous.)

**DOUBLE EPAISSEUR**

**AVEC PLIURE**—Placer endroit contre endroit.

\* **SANS PLIURE**—Plier le tissu en deux sur la **TRAME**, endroit contre endroit. Couper à la pliure, de lisière à lisière (A). Placer les 2 épaisseurs dans le même sens du tissu, endroit contre endroit (B).



**PLIURE**—Placer la ligne du patron exactement sur la pliure **NE JAMAIS COUPER** sur cette ligne.

