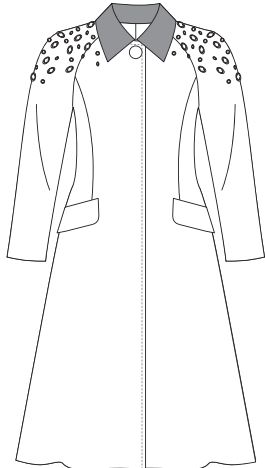


A



B

## FABRIC CUTTING LAYOUTS



Indicates Bustline, Waistline, Hipline and/or Biceps. Measurements refer to circumference of Finished Garment (Body Measurement + Wearing Ease + Design Ease). Adjust Pattern if necessary.

Lines shown are CUTTING LINES, however, 5/8" (1.5cm) SEAM ALLOWANCES ARE INCLUDED, unless otherwise indicated. See SEWING INFORMATION for seam allowance.

Find layout(s) by Garment/View, Fabric Width and Size. Layouts show approximate position of pattern pieces; position may vary slightly according to your pattern size.

All layouts are for with or without nap unless specified. For fabrics with nap, pile, shading or one-way design, use WITH NAP layout.

RIGHT SIDE OF PATTERN	WRONG SIDE OF PATTERN	RIGHT SIDE OF FABRIC	WRONG SIDE OF FABRIC
-----------------------	-----------------------	----------------------	----------------------

S/T = SIZE(S)/TAILLE(S)  
\* = WITH NAP/AVEC SENS  
S/L = SELVAGE(S)/LISIÈRE(S)  
AS/TT = ALL SIZE(S)/TOUTES TAILLE(S)  
\*\* = WITHOUT NAP/SANS SENS  
F/P = FOLD/PLIURE  
CF/PT = CROSSWISE FOLD/PLIURE TRAME

Position fabric as indicated on layout. If layout shows...

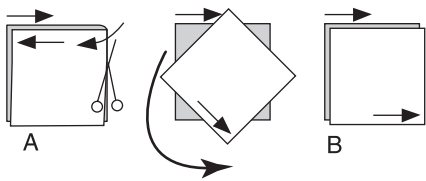
**GRAINLINE**—Place on straight grain of fabric, keeping line parallel to selvage or fold. ON "with nap" layout arrows should point in the same directions. (On Fur Pile fabrics, arrows point in direction of pile.)

**SINGLE THICKNESS**—Place fabric right side up. (For Fur Pile fabrics, place pile side down.)

### DOUBLE THICKNESS

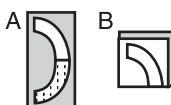
WITH FOLD—Fold fabric right sides together.

\* WITHOUT FOLD—With right sides together, fold fabric CROSSWISE. Cut fold from selvage to selvage (A). Keeping right sides together, turn upper layer completely around so nap runs in the same direction as lower layer.



**FOLD**—Place edge indicated exactly along fold of fabric. NEVER cut on this line.

When pattern piece is shown like this...



• Cut other pieces first, allowing enough fabric to cut this piece (A). Fold fabric and cut piece on fold, as shown (B).

★ Cut piece only once. Cut other pieces first, allowing enough fabric to cut this piece. Open fabric; cut piece on single layer.

Cut out all pieces along cutting line indicated for desired size using long, even scissor strokes, cutting notches outward.

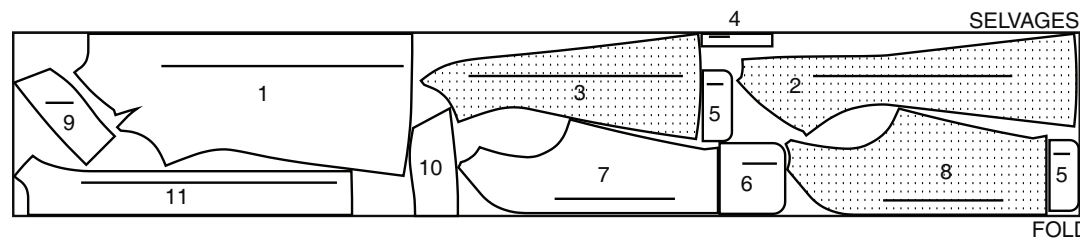
Transfer all markings and lines of construction before removing pattern tissue. (Fur Pile fabrics, transfer markings to wrong side.)

**NOTE:** Broken-line boxes ( a! b! c! ) in layouts represent pieces cut by measurements provided.

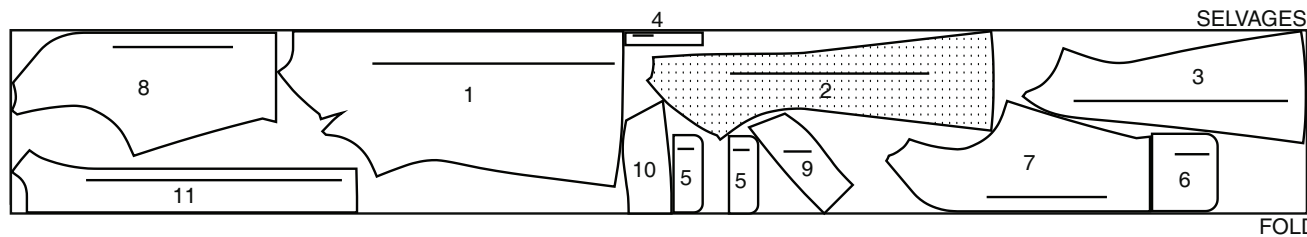
## COAT A / MANTEAU A

PIECES: 1,2,3,4,5,6,7,8,9,10,11

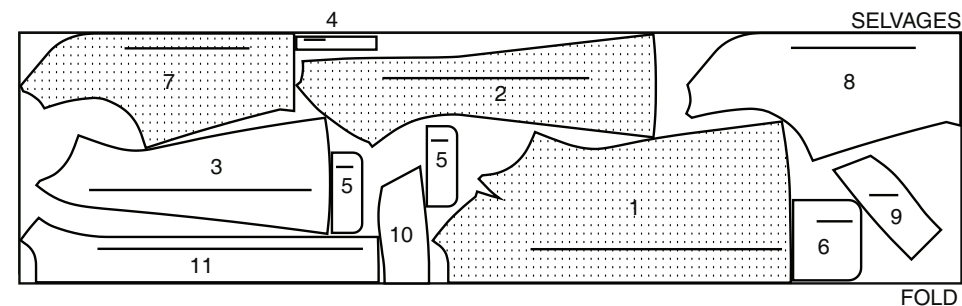
45" (115 cm)  
S/T  
8-10-12-14-16-18



45" (115 cm)  
S/T  
20-22-24



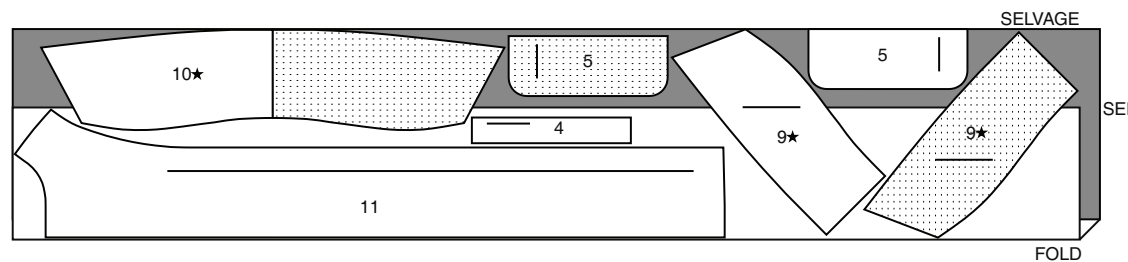
60" (150 cm)  
AS/TT



## FUSIBLE INTERFACING A / ENTOILAGE THERMOCOLLANT A

PIECES: 4,5,9,10,11

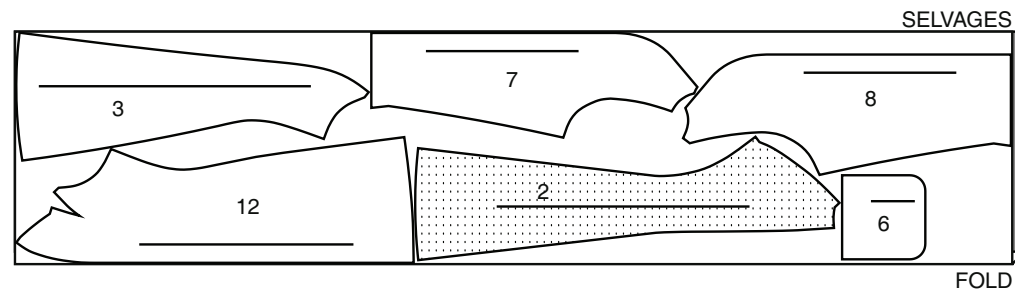
20" (51 cm) \*\*  
AS/TT



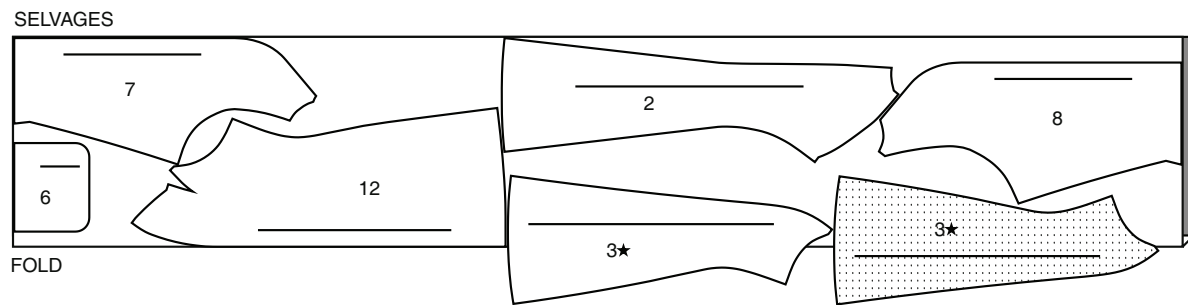
## LINING A / DOUBLURE A

PIECES: 2,3,6,7,8,12

45" (115 cm) \*\*  
S/T  
8-10-12-14



45" (115 cm) \*\*  
S/T  
16-18-20-22-24



### COAT A,B

- 1 FRONT
- 2 BACK
- 3 SIDE BACK
- 4 WELT
- 5 FLAP
- 6 POCKET
- 7 SLEEVE FRONT
- 8 SLEEVE BACK
- 9 UNDER COLLAR
- 10 UPPER COLLAR
- 11 FRONT FACING
- 12 FRONT LINING

### MANTEAU A,B

- 1 DEVANT
- 2 DOS
- 3 COTE DOS
- 4 BORDURE
- 5 RABAT
- 6 POCHE
- 7 MANCHE DEVANT
- 8 MANCHE DOS
- 9 DESSOUS DE COL
- 10 DESSUS DE COL
- 11 PAREMENTURE DEVANT
- 12 DOUBLURE DEVANT

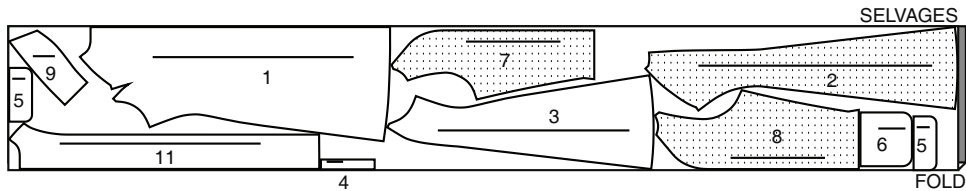
## BODY MEASUREMENTS / MESURES DU CORPS

	MISSES/JEUNE FEMME									
Sizes/Tailles	8	10	12	14	16	18	20	22	24	
Bust (ins)	31½	32½	34	36	38	40	42	44	46	
Waist	24	25	26½	28	30	32	34	37	39	
Hip	33½	34½	36	38	40	42	44	46	48	
Bk. Wst Lgth.	15%	16	16¼	16½	16¾	17	17¼	17½	17¾	
T. poitrine (cm)	80	83	87	92	97	102	107	112	117	
T. taille	61	64	67	71	76	81	87	94	97	
T. hanches	85	88	92	97	102	107	112	117	122	
Nuque à taille	40	40.5	41.5	42	42.5	43	44	44	45	

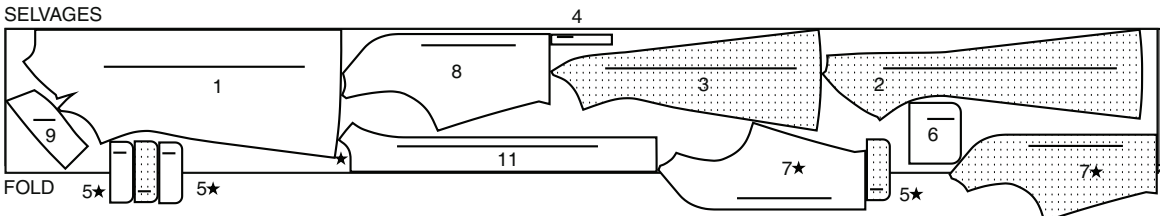
**COAT B / MANTEAU B**

PIECES: 1,2,3,4,5,6,7,8,9,11

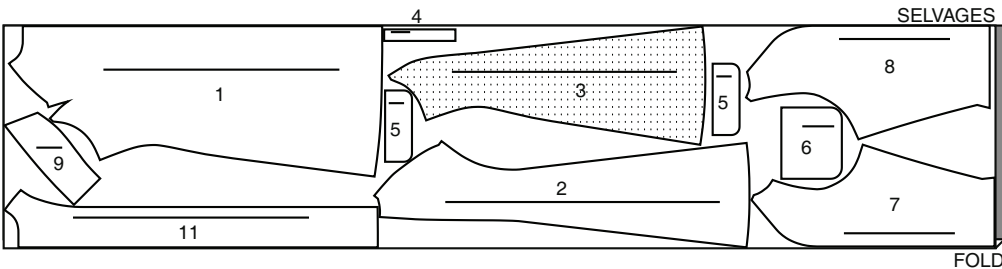
45" (115 cm)  
S/T  
8-10-12-14-16



45" (115 cm)  
S/T  
18-20-22-24



60" (150 cm)  
AS/TT



**CONTRAST B (UPPER COLLAR) / CONTRASTE B (DESSUS DE COL)**

PIECE: 10

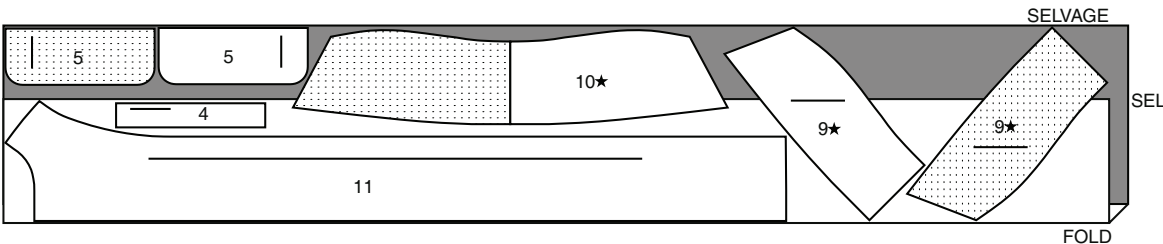
45",60" (115,150 cm)  
AS/TT



**FUSIBLE INTERFACING B / ENTOILAGE THERMOCOLLANT B**

PIECES: 4,5,9,10,11

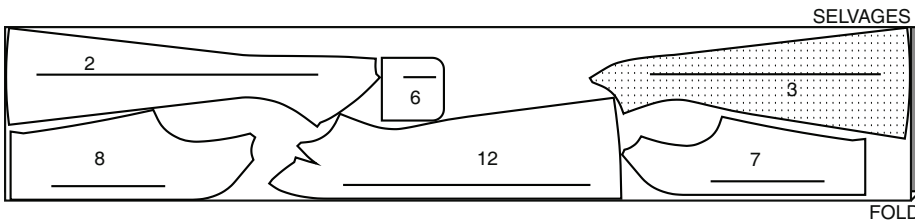
20" (51 cm) \*\*  
AS/TT



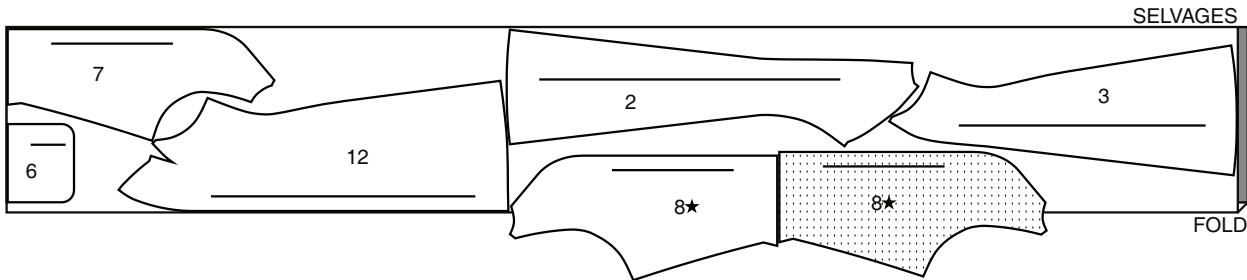
**LINING B / DOUBLURE B**

PIECES: 2,3,6,7,8,12

45" (115 cm)  
S/T  
8-10-12-14



45" (115 cm)  
S/T  
16-18-20-22-24



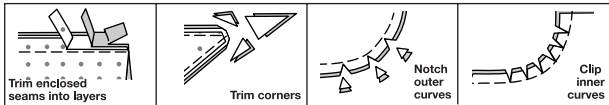
**SEWING INFORMATION**

**5/8" (1.5cm) SEAM ALLOWANCES ARE INCLUDED,**  
(unless otherwise indicated)

**ILLUSTRATION SHADING KEY**

Right Side	Wrong Side	Interfacing	Lining	Underlining

Press as you sew. Press seams flat, then press open, unless otherwise instructed. Clip seam allowances, where necessary, so they lay flat.



**GLOSSARY**

Sewing terms appearing in **BOLD TYPE** in Sewing Instructions are explained below.

**REINFORCE** - Stitch along seamline where indicated in sewing instructions, using small machine stitches.

**SLIPSTITCH** - Slide needle through a folded edge, then pick up a thread of underneath fabric.

**STAYSTITCH** - Stitch 1/8" (3mm) from seamline in seam allowance (usually 1/2" (13mm) from raw edge).

**TOPSTITCH** - On outside, stitch 1/4" (6mm) from edge, seam or previous stitching, using presser foot as guide, or stitch where indicated in instructions.

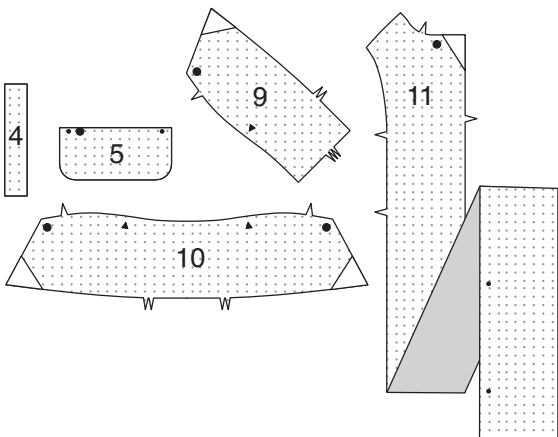
**UNDERSTITCH** - Open out facing or underside of garment; stitch to seam allowance close to seam.

**COAT A,B**

**NOTE:** The first view mentioned will be illustrated unless otherwise indicated.

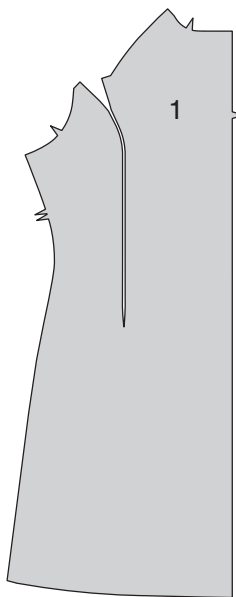
**Interfacing**

**1.** Trim corners from INTERFACING, as shown. Fuse interfacing to wrong side of each matching fabric section, following manufacturer's instructions.

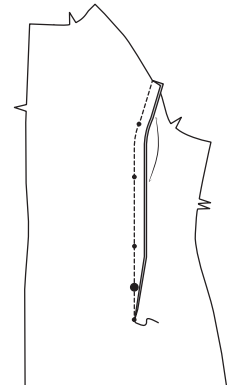


**Front and Back**

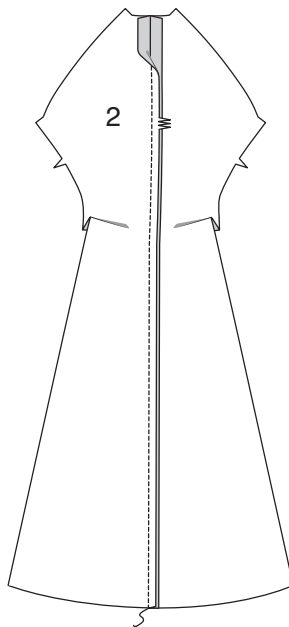
**2.** Slash FRONT (1) along slash line, as shown.



**3.** Stitch dart in front. Trim. Press open.

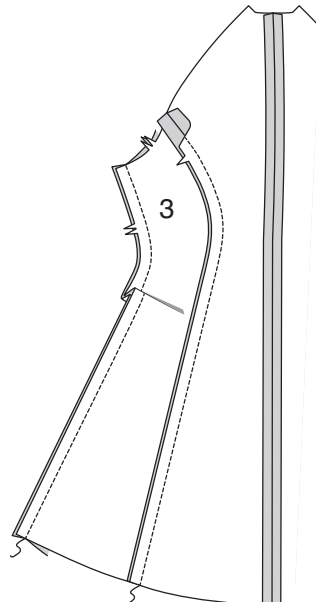


**4.** Stitch BACK (2) sections together at center back.



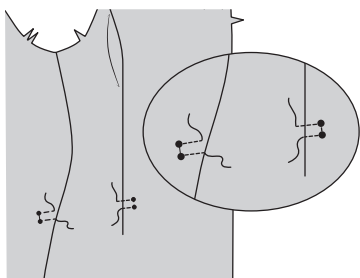
**5.** Pin SIDE BACK (3) sections to back. Stitch.

Stitch back and fronts together at sides.

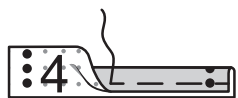


## Pocket

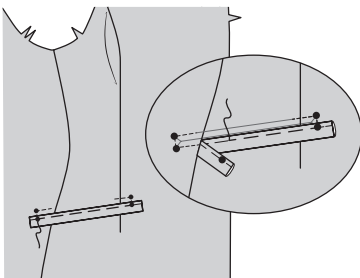
**6. REINFORCE** inner corners of front and side along stitching lines, pivoting at small circles, as shown.



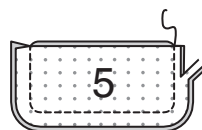
**7.** With wrong sides together, fold **WELT** (4) along foldline. Baste raw edges together.



**8.** Pin welt to front and side, placing seamline along lower stitching line, matching small circles, as shown. Baste.



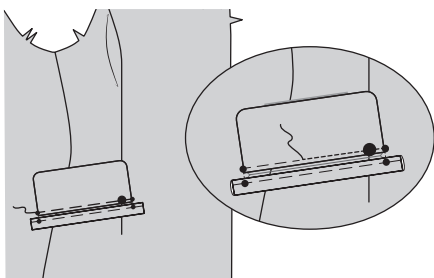
**9.** With right sides together, stitch two **FLAP** (5) sections together, leaving upper edge open. Trim.



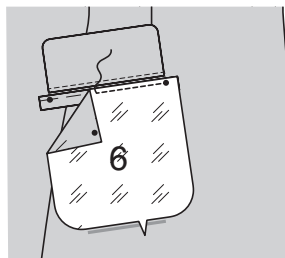
**10.** Turn. Press. Baste raw edges together.



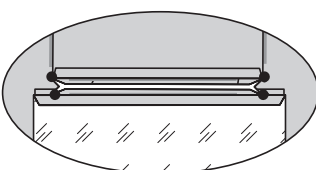
**11.** Pin flap to front and side, placing seamline along upper stitching line; baste. Stitch.



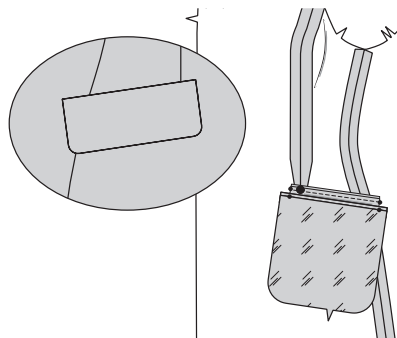
**12.** With right sides together, pin **POCKET** (6) lining to front over lower welt, placing seamline along basting. Stitch along seamline between small circles.



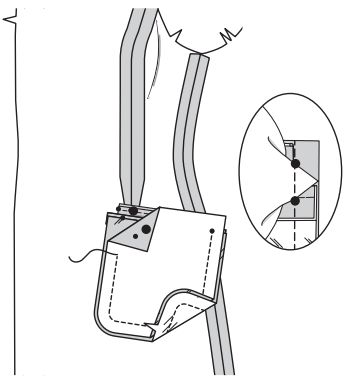
**13.** Slash along line between stitching, clipping diagonally to small circles and being careful not to cut welt and flap.



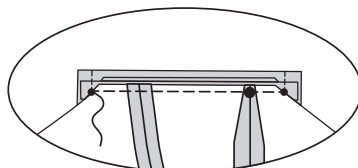
**14.** Turn pocket lining and triangular ends to inside, pulling ends of welt between triangular ends. Press.



**15.** With right sides together, pin pocket to lining; baste. Stitch side and lower edges of pocket, catching welt and triangular ends in stitching, keeping front free.



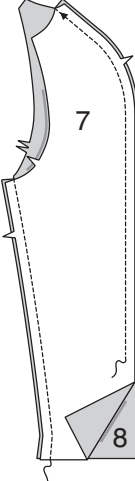
**16.** To stay pocket, turn upper edge of front and side down. Stitch along upper stitching line, as shown.



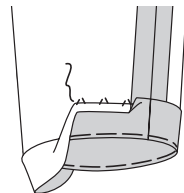
## Sleeve

**17.** Stitch **SLEEVE FRONT** (7) to **SLEEVE BACK** (8) at shoulder and overarm edge.

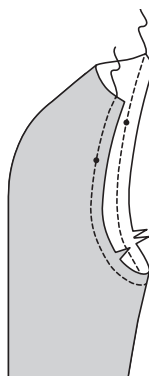
Stitch sleeve front to sleeve back at underarm.



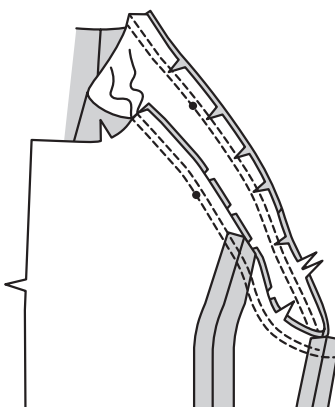
**18.** Turn up 1-5/8"(4cm) sleeve hem. Baste close to fold. Sew hem in place. Press.



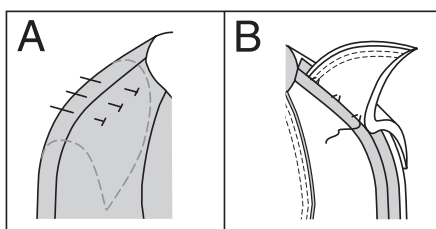
**19.** Turn sleeve right side out. **STAYSTITCH** armhole edge.



**20.** With right sides together, pin sleeve to front and back armhole edge, matching symbols, clipping sleeve where necessary. Baste. Stitch. Stitch again 1/4"(6mm) away in seam allowance. Trim close to stitching. Turn seam toward sleeve.

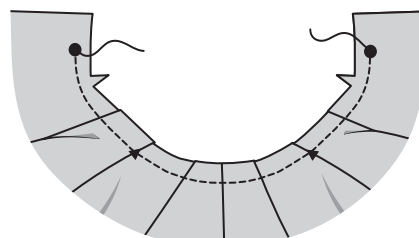


**21.** A. Try on coat for shoulder pad placement. Pin pad to garment.  
B. Sew pad to shoulder seam allowance.

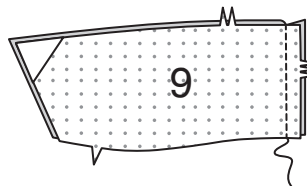


## Collar

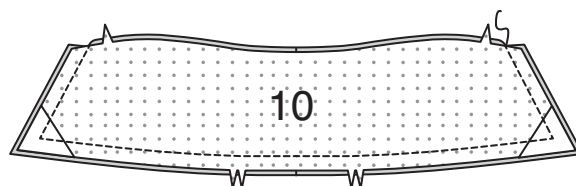
**22.** **STAYSTITCH** neck edge of coat between large circles.



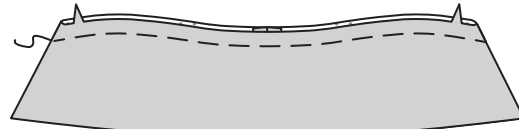
**23.** Stitch **UNDER COLLAR** (9) at center back.



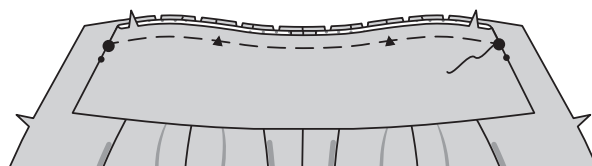
**24.** Stitch under collar and **UPPER COLLAR** (10) together, leaving single notched edge open. Trim.



**25.** Turn. Press. Baste raw edges together.

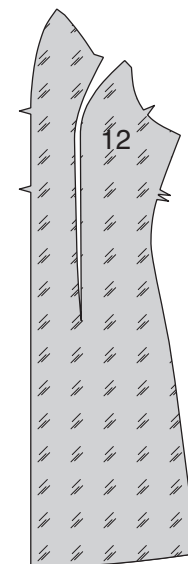


**26.** Pin collar to neck edge, clipping coat neck edge where necessary; baste.

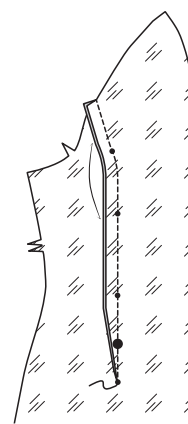


## Facing and Lining

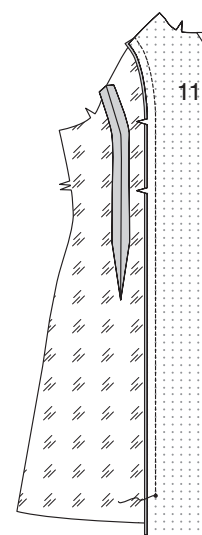
**27.** Slash **FRONT LINING** (12) along slash line, as shown.



**28.** Stitch dart in front lining. Trim. Press open.



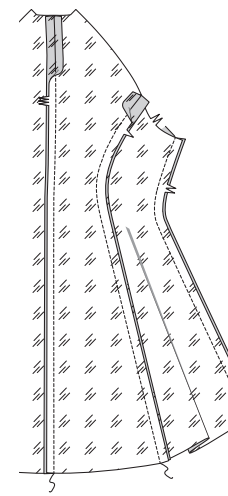
**29.** Pin **FRONT FACING** (11) to side edge of front lining. Stitch, ending at small circle.



**30.** Stitch back **LINING** (2) sections together at center back.

Pin side back **LINING** (3) sections to side edges of back lining. Stitch.

Stitch back lining and front facing/lining sections together at and sides.

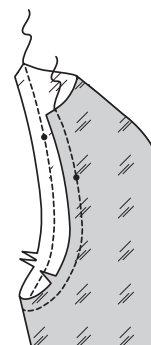


**31.** Stitch sleeve front **LINING** (7) to sleeve back **LINING** (8) at shoulder and overarm edge.

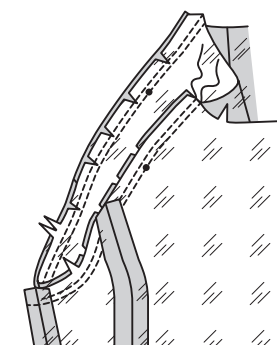
Stitch sleeve front lining to sleeve back lining at underarm.



**32.** Turn sleeve lining right side out. **STAYSTITCH** armhole edge.



**33.** With right sides together, pin sleeve lining to facing/lining armhole edge, matching symbols, clipping sleeve lining where necessary. Baste. Stitch. Stitch again 1/4"(6mm) away in seam allowance. Trim close to stitching. Turn seam toward sleeve.



**34.** With right sides together, stitch lining and facing to coat front opening and neck edges. Trim.

Stitch across facing 1-5/8"(4cm) above lower edge. Trim, as shown.

**UNDERSTITCH** lining and facing neck edge as far as possible.

Turn facing/lining to inside, slip sleeve lining in place. Press.

