

S9975

**Simplicity**<sup>®</sup>

Clothes Fit Dolls/Vêtements Pour Poupées de: 18 in/46cm



Designed and printed in USA.

ELAINE HEIGL **easy-to-sew**

Shop all the pattern brands you love @

**Simplicity**<sup>®</sup>.com

For customers outside of the U.S. and Canada

**sewdirect.com**

**sewdirect.com.au**

Easy

**18" (46CM) DOLL CLOTHES**

**Suggested Fabrics:** Broadcloth, Calico, Cotton Types, Gingham, Linen Types, Madras, Seersucker.

**Notions:** **A,B:** ¼ yd. (0.3m) of ¼" (6mm) elastic. **Also for A:** One small appliqué, ¼ yd. (0.6m) of baby rick rack, 4½" (11cm) length of ½" (1.3cm) hook and loop tape. **Also for B:** 2 yds. (1.8m) of baby rick rack, 3¾" (10cm) length of ½" (1.3cm) hook and loop tape. **Also for C:** 1½ yds. (1.0m) of 1¾" (4cm) flat lace trim, ¼ yd. (0.6m) of ¼" (6mm) elastic, 3¾" (10cm) length of ½" (1.3cm) hook and loop tape. **D,E:** 3½" (9cm) length of ½" (1.3cm) hook and loop tape. **Also for E:** ¼ yd. (0.8m) of 1" (2.5cm) flat lace trim. **F,G:** 1¾ yds. (1.2m) of ¼" (6mm) elastic. **Also for F:** 3" (8cm) length of ½" (1.3cm) hook and loop tape. **Also for G:** ¼ yd. (0.6m) of ¼" (1cm) ribbon.

**Jumpsuit A**

45"\* - ½ yd. (115cm\* - 0.5m)

**Dress B**

45"\* - ¼ yd. (115cm\* - 0.6m)

**Dress C**

45"\* - ½ yd. (115cm\* - 0.5m)

**Jumper D,E**

45"\* - ¼ yd. (115cm\* - 0.3m)

**Blouse F**

45"\* - ¼ yd. (115cm\* - 0.3m)

**Jacket G**

45"\* - ¼ yd. (115cm\* - 0.3m)

\*with nap \*\*without nap



A



B



C



D



E



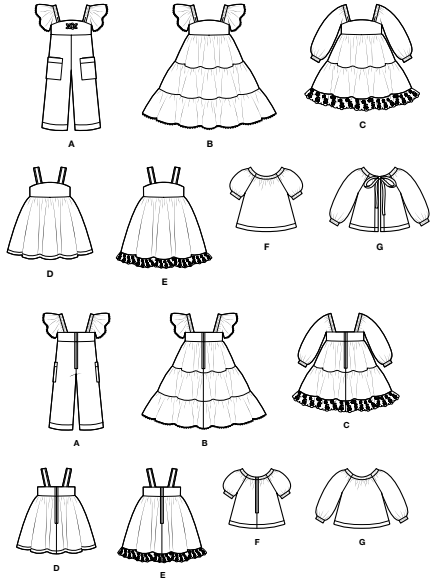
F



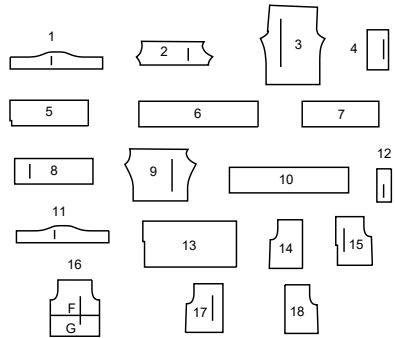
G

# Simplicity® S9975

Thank you for purchasing this Simplicity pattern.  
We made every effort to provide you with a high quality product.

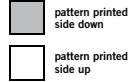


18 PIECES



- |                                 |                                |
|---------------------------------|--------------------------------|
| 1 BODICE FRONT AND BACK - A,B,C | 10 LOWER TIER - C              |
| 2 SLEEVE - A,B                  | 11 BODICE FRONT AND BACK - D,E |
| 3 PANTS FRONT AND BACK - A      | 12 SHOULDER STRAP - D,E        |
| 4 POCKET - A                    | 13 SKIRT FRONT AND BACK - D,E  |
| 5 UPPER TIER - B,C              | 14 FRONT - F                   |
| 6 MIDDLE TIER - B               | 15 BACK - F                    |
| 7 LOWER TIER FRONT - B          | 16 SLEEVE - F,G                |
| 8 LOWER TIER BACK - B           | 17 FRONT - G                   |
| 9 SLEEVE - C                    | 18 BACK - G                    |

## Cutting Layouts



POSITION OF PATTERN PIECES MAY VARY  
SLIGHTLY ACCORDING TO YOUR PATTERN SIZE

### General Directions For Cutting

**PRE-SHRINK** and iron all fabric.

**FOR DOUBLE THICKNESS** -Fold fabric with **RIGHT** sides together. Pin pattern to **WRONG** side of fabric.

**FOR SINGLE THICKNESS** -Pin pattern to **RIGHT** side of fabric.

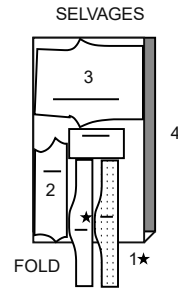
★ If layout shows a piece extending past fold, cut out all pieces except piece that extends. Open out fabric to single thickness. Cut extending piece on **RIGHT** side of fabric in position shown.

✳ Mark small arrows along both selvages in dictating direction of nap or design. Fold fabric crosswise with **RIGHT** sides together, and cut along fold. Turn one fabric layer around so arrows on both layers go in the same direction. Place **RIGHT** sides together.

### JUMPSUIT A

PIECES 1 2 3 4

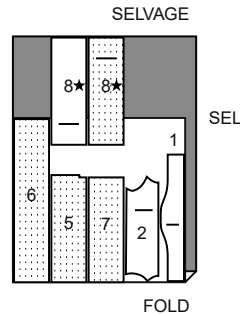
45" (115CM)  
WITH NAP



### DRESS B

PIECES 1 2 5 6 7 8

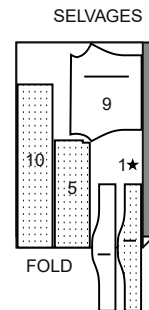
45" (115CM)  
WITH NAP



### DRESS C

PIECES 1 5 9 10

45" (115CM)  
WITH NAP

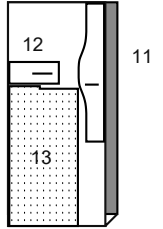


### JUMPER D,E

PIECES 11 12 13

45" (115CM)  
WITH NAP

SELVAGES



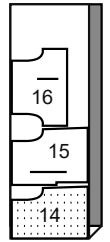
FOLD

### BLOUSE F

PIECES 14 15 16

45" (115CM)  
WITH NAP

SELVAGES



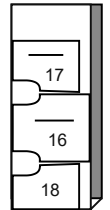
FOLD

### JACKET G

PIECES 16 17 18

45" (115CM)  
WITH NAP

SELVAGES



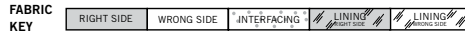
FOLD

## SEWING TUTORIALS



Build your skills viewing short, easy-to-follow videos at [simplicity.com/sewingtutorials](http://simplicity.com/sewingtutorials)

## Sewing Directions



Read **General Directions** on page 1 before you begin.

Sewing methods in **BOLD TYPE** have Sewing Tutorial Video available. Scan QR CODE to watch videos:

**GATHER** – see **Gathering**: “sewing two row gathers” video.

**EDGESTITCH** – see **Machine Stitches**: “how to sew an edgestitch” video.

**SLIPSTITCH** – see **Hand Stitching**: “how to slip stitch” video.

**TOPSTITCH** – see **Machine Stitches**: “how to topstitch” video.

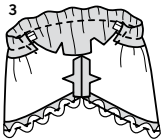
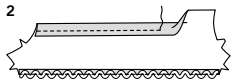
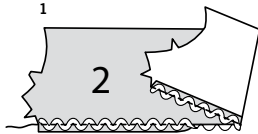
**TRIM SEAM** – see **Seams**: “how to trim, clip and layer seams” video.

**PATTERN PIECES WILL BE IDENTIFIED BY NUMBERS THE FIRST TIME THEY ARE USED.**

**STITCH 1/4" (6MM) SEAMS WITH RIGHT SIDES TOGETHER UNLESS OTHERWISE STATED.**

## JUMPSUIT A, DRESS B, C

## SLEEVE A, B

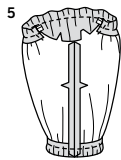
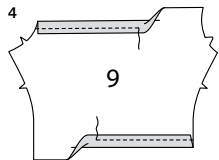


1. Cut a piece of rick rack trim the length of lower edge of SLEEVE (2). On OUTSIDE, pin trim to sleeve, placing center of trim along 1/4" (6mm) hem line. Stitch through center of trim. Press hem up along stitching, pressing trim out. Trim raw edge of hem even with inner edge of rick rack.

2. Press under upper edge of sleeve along foldline for casing. Stitch a scant 3/8" (1cm) from pressed edge.

3. Cut a piece of 1/4" (6mm) elastic, 4-3/4" (12cm) long. Thread elastic through casing. Stitch across ends. Stitch underarm edges of sleeve together.

## SLEEVE C



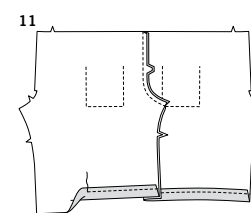
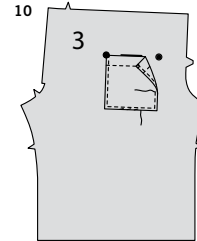
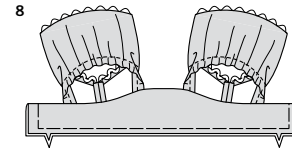
4. To form casings for elastic, press under upper and lower edges of SLEEVE (9) along foldlines for casing. Stitch a scant 3/8" (1cm) from pressed edges.

5. Cut a piece of 1/4" (6mm) elastic, 4-3/4" (12cm) long for each casing. Thread elastic through casing. Stitch across ends. Stitch underarm edges of sleeve together.

## CONTINUE AS FOLLOWS FOR ALL VIEWS

6. With RIGHT sides together and raw edges even, pin sleeve to BODICE FRONT AND BACK (1), matching small dots, large dots, and notches. Stitch.

7. With RIGHT sides together and raw edges even, pin bodice front and back facing to bodice front and back (over sleeve), matching centers and notches. Stitch across upper edge.



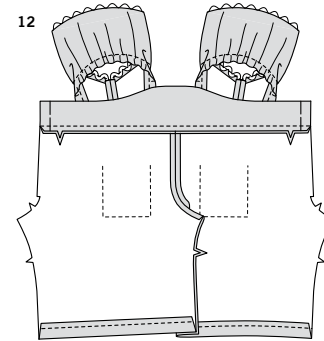
8. Turn facing to INSIDE; press, pressing out the sleeves. Baste raw edges together.

## PANTS A

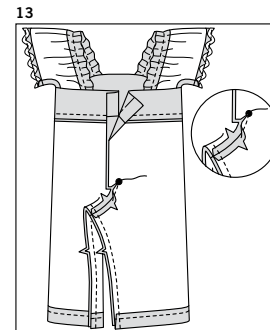
9. Fold POCKET (4) along foldline with WRONG sides together. Stitch along seam lines, leaving an opening for turning. **TRIM SEAM.**

10. Turn pocket; press. **SLIPSTITCH** opening edges together. On OUTSIDE, **TOPSTITCH 1/2"** (1.3cm) from fold. Pin pocket to PANTS FRONT AND BACK (3), matching large dots. **EDGESTITCH** side and lower edges.

11. Press under 3/4" (2cm) hem allowance on lower edge of pants. Stitch 1/2" (1.3cm) from pressed edge. With RIGHT sides together and raw edges even, pin pants front and back sections together at center edges, matching notches. Stitch center front edges.

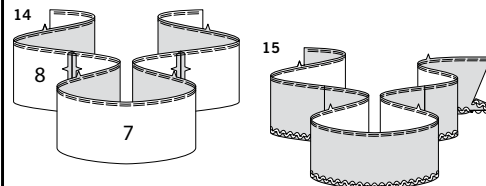


12. With RIGHT sides together and raw edges even, pin lower edge of bodice to upper edge of pants, matching centers and notches. Stitch. Press seam toward pants.



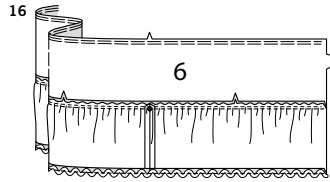
13. Stitch center back edges of pants from inner leg edge to large dot, backstitching at dot to reinforce the seam. Clip LEFT center back seam allowance to stitching at large dot. Stitch inner leg edges of pants. On OUTSIDE, pin applique to center front of bodice, or as you prefer. Tack in place, invisibly, as shown on envelope.

## SKIRT B

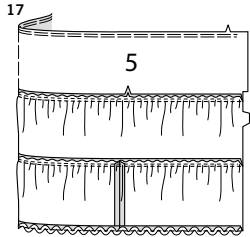


14. Stitch LOWER TIER FRONT (7) to LOWER TIER BACK (8) sections at side edges. **GATHER** upper edge of skirt lower tier between center back seam allowances.

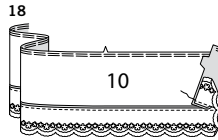
15. Cut a piece of rick rack trim the length of lower edge of skirt lower tier. On OUTSIDE, pin trim to tier, placing center of trim along 1/4" (6mm) hem line. Stitch through center of trim. Press hem up along stitching, pressing trim out. Trim raw edge of hem even with inner edge of rick rack.



**16. GATHER** upper edge of MIDDLE TIER (6). With RIGHT sides together and raw edges even, pin upper edge of lower tier to lower edge of middle tier, matching centers and notches, placing side seam at small dot. Pull up gathering stitches and distribute evenly. Baste; Stitch. Press seam toward middle tier, pressing lower tier out.

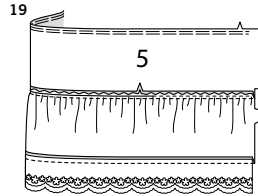


**17. GATHER** upper edge of UPPER TIER (5). With RIGHT sides together and raw edges even, pin upper edge of middle tier to lower edge of upper tier, matching centers and notches, pulling up gathering stitches and distributing gathers evenly. Baste; Stitch. Press seam toward upper tier, pressing out skirt.



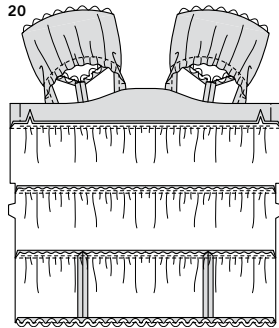
### SKIRT C

**18. GATHER** upper edge of skirt LOWER TIER (10). Cut a piece of flat lace trim the length of lower edge of lower tier. On OUTSIDE, pin trim to tier, placing straight edge of lace along lower raw edge. Stitch along 1/4" (6mm) hem line. Press hem up along stitching, pressing trim out.

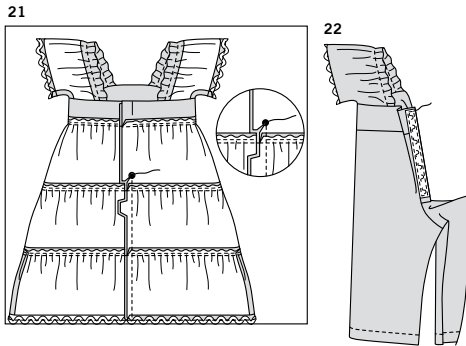


**19. GATHER** upper edge of UPPER TIER (5). With RIGHT sides together and raw edges even, pin upper edge of lower tier to lower edge of upper tier, matching centers and notches, pulling up gathering stitches and distributing gathers evenly. Baste; Stitch. Press seam toward upper tier, pressing out skirt.

### CONTINUE AS FOLLOWS FOR SKIRT B, C



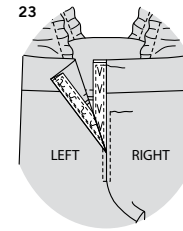
**20.** With RIGHT sides together and raw edges even, pin lower edge of bodice to upper edge of skirt, matching centers and notches, pulling up gathering stitches and distributing gathers evenly. Baste; Stitch. Press seam toward bodice, pressing skirt out.



**21.** Stitch center back edges of skirt, from lower edge to large dot, back-stitching at dot to reinforce the seam. Clip LEFT center back seam allowance to stitching at large dot.

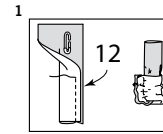
### CONTINUE AS FOLLOWS FOR ALL VIEWS

**22.** Cut a piece of hook and loop tape the length of the back opening from upper edge to large dot. Separate the tape. On OUTSIDE, pin loop section to LEFT back extension. EDGESTITCH tape in place.

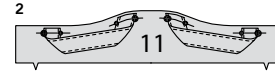


**23.** Turn LEFT back extension to INSIDE along center line; press. On OUTSIDE, pin hook section to RIGHT back extension. EDGESTITCH tape in place. To denote a slot zipper, TOPSTITCH back sections separately a generous 1/8" (3mm) away from centers and opening end.

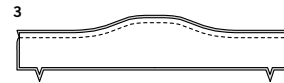
### JUMPER D, E



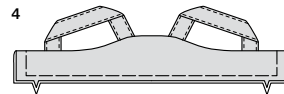
**1.** On OUTSIDE, attach a safety pin to one end of SHOULDER STRAP (12) away from seam lines and off center. Fold shoulder strap in half, lengthwise, with RIGHT sides together. Stitch long edge. Back safety pin through strap, turning strap RIGHT side out. EDGESTITCH close to long edges of strap.



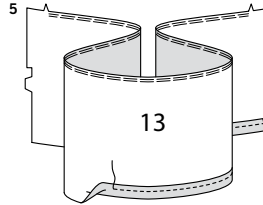
**2.** On OUTSIDE, pin strap to BODICE FRONT AND BACK (11), matching small and large dots; baste.



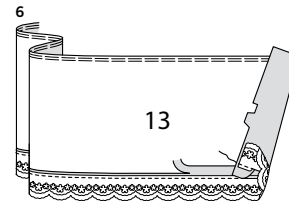
**3.** With RIGHT sides together and raw edges even, pin bodice front and back facing to bodice front and back along upper edge. Stitch.



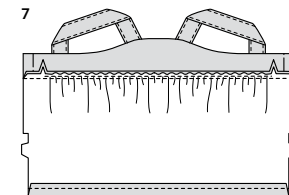
**4.** Turn facing to INSIDE; press, pressing out the straps. Baste raw edges together.



**5. FOR VIEW D – GATHER** upper edge of SKIRT FRONT AND BACK (13) between notches. Press under 5/8" (1.5cm) hem allowance. Stitch 3/8" (1cm) from pressed edge.

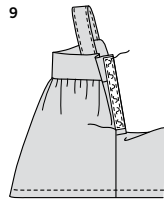
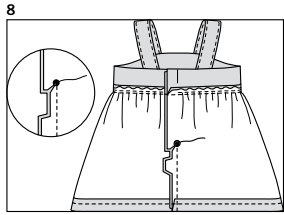


**6. FOR VIEW E – GATHER** upper edge of SKIRT FRONT AND BACK (13). Cut a piece of flat lace trim the length of lower edge of skirt. On OUTSIDE, pin lace to skirt with straight edge of lace INSIDE the 5/8" (1.5cm) hem allowance. Stitch 5/8" (1.5cm) from raw edge, catching in straight edge of lace. Press hem up along stitching, pressing lace out. Trim hem allowance to 1/4" (6mm).



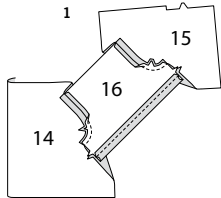
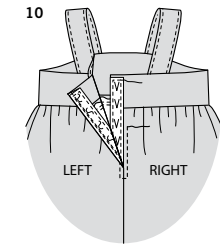
### CONTINUE AS FOLLOWS FOR BOTH VIEWS

**7.** With RIGHT sides together and raw edges even, pin lower edge of bodice to upper edge of skirt, matching centers and notches, pulling up gathering stitches and distributing gathers evenly. Baste; Stitch. Press seam toward bodice, pressing out skirt.



**8.** Stitch center back edges of skirt, from lower edge to large dot, back-stitching at dot to reinforce the seam. Clip LEFT center back seam allowance to stitching at large dot.

**9.** Cut a piece of hook and loop tape the length of the back opening from upper edge to large dot. Separate the tape. On OUTSIDE, pin loop section to LEFT back extension. **EDGESTITCH** tape in place.



**10.** Turn LEFT back extension to INSIDE along center line; press. On OUTSIDE, pin hook section to RIGHT back extension. **EDGESTITCH** tape in place. To denote a slot zipper, **TOPSTITCH** back sections separately a generous 1/8" (3mm) away from centers and across opening end.

## BLOUSE F

**1.** With RIGHT sides together and raw edges even, pin SLEEVE (16) to FRONT (14) and BACK (15) at armhole edge, matching notches. Stitch. Press up lower edge of sleeve along foldline for casing. Stitch a scant 3/8" (1cm) from pressed edge.

**2.** Cut a piece of 1/4" (6mm) elastic, 4-3/4" (12cm) long for each casing. Thread elastic through casing. Stitch across ends.

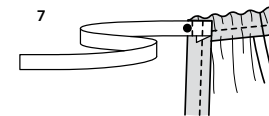
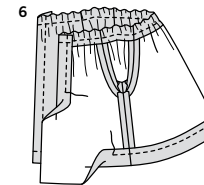
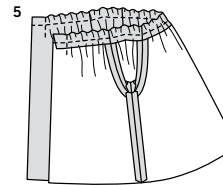
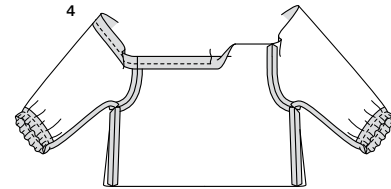
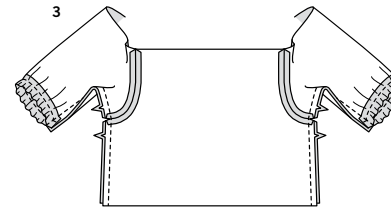
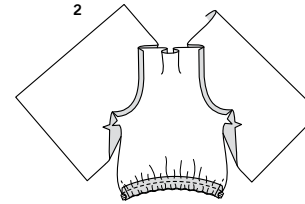
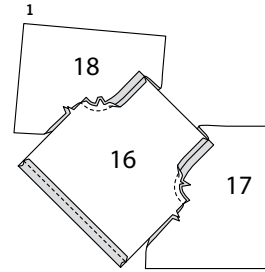
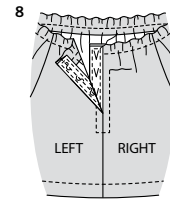
**3.** Pin front to back at entire underarm seam, matching armhole seams. Stitch. Clip to stitching at armhole seam. Press open.

**4.** Press neck edge of blouse to INSIDE along fold line for casing. Stitch a scant 3/8" (1cm) from pressed edge.

**5.** Cut a piece of 1/4" (6mm) elastic, 10-3/4" (27.5cm) long. Thread elastic through casing, having raw edges even. Stitch in place over center back marking.

**6.** Stitch center back edges of blouse, from lower edge to large dot, back-stitching at dot to reinforce the seam. Clip LEFT center back seam allowance to stitching at large dot. Press up 3/4" (2cm) hem allowance on lower edge of blouse. Stitch 1/2" (1.3cm) from pressed edge.

**7.** Cut a piece of hook and loop tape the length of the back opening from upper edge to large dot. Separate the tape. On OUTSIDE, pin loop section to LEFT back extension. **EDGESTITCH** tape in place.



**8.** Turn LEFT back extension to INSIDE along center line; press. On OUTSIDE, pin hook section to RIGHT back extension. **EDGESTITCH** tape in place. To denote a slot zipper, **TOPSTITCH** back sections separately a generous 1/4" (6mm) away from centers and across opening end.

## JACKET G

**1.** With RIGHT sides together and raw edges even, pin SLEEVE (16) to FRONT (17) and BACK (18) at armhole edge, matching notches. Stitch. Press up lower edge of sleeve along foldline for casing. Stitch a scant 3/8" (1cm) from pressed edge.

**2.** Cut a piece of 1/4" (6mm) elastic, 4-3/4" (12cm) long for each casing. Thread elastic through casing. Stitch across ends.

**3.** Pin front to back at entire underarm seam, matching armhole seams. Stitch. Clip to stitching at armhole seam. Press open.

**4.** Press neck edge of jacket to INSIDE along fold line for casing. Stitch a scant 3/8" (1cm) from pressed edge.

**5.** Cut a piece of 1/4" (6mm) elastic, 10-3/4" (27.5cm) long for casing. Thread elastic through casing, having raw edges even. Stitch in place over center front fold line.

**6.** Press up 3/4" (2cm) hem allowance on lower edge of jacket. Stitch 1/2" (1.3cm) from pressed edge. Press under front edge of jacket along foldline. Stitch 3/8" (1cm) from pressed edge.

**7.** Cut two pieces of 3/8" (1cm) ribbon 9" (23cm) long. On each piece, turn under one end 3/8" (1cm); press. On INSIDE, pin pressed end of ribbon to front facing along raw edge. Stitch in place over previous stitching, and close to front edge of facing. If you prefer, make knot on remaining end of ribbon.  
**Tie ribbon into a bow at center front after dressing doll.**



# Congrats!

You've completed your sewing adventure

---

## SHARE YOUR LOOK



Post your pattern and tag us using [#simplicitypatterns](#)  
[@simplicity creative group](#)  
[@simplicitymccallsuk](#)  
[@simplicitymccallsaustralia](#)  
for a chance to be featured on our social media.

Look for more PDF patterns at [simplicity.com](#) or for customers outside the U.S. and Canada visit [sewdirect.com](#) and [sewdirect.com.au](#)

Have a question or need help with your sewing project contact us:  
[Simplicity.com](#)    [Sewdirect.com](#)    [Sewdirect.com.au](#)



Simplicity ©2024 a division of IG Design Group Americas Inc. • Atlanta, GA 30342 USA [www.thedesigngroup.com](#) • All Rights Reserved. [www.simplicity.com](#) • Made in the U.S.A. Fabriqué aux États-Unis.

To be used for individual private home use only and not for commercial or manufacturing purposes. • A usage privé seulement et non à des fins commerciales ou de production en série. • Para uso privado solamente, no se puede utilizar con propósitos de comercialización o de producción en serie.