

S9973

Simplicity[®]



by Faith Van Zanten



Shop all the pattern brands you love @

Simplicity[®].com

Average

APRONS AND KITCHEN DÉCOR

Suggested Fabrics: Broadcloth, Chambray, Cotton Types, Linen Types, Poplin. **C,D Heads and Beaks** in Flannel. **C,D Beaks** also in Felt. **C,D Contrast 1** in Muslin. **D Contrast 4** in Net. **Padding:** Heat Resistant Batting.

Notions: **A,B:** 2" (5cm) length of ½" (1.3cm) hook and loop tape. **C,D:** Polyfiberfill, ¼" (6mm) elastic: ½ yd. (0.3m) for **C**, ¼ yd. (0.3m) for **D**, 4½" (11cm) length of ½" (1.3cm) hook and loop tape, two ¾" (1cm) half-ball buttons, ¼ yd. (0.3m) of ½" (1.3cm) pre-gathered lace trim, ¾ yd. (0.6m) of ¾" (1.5cm) ribbon, fine tip fabric marker.

Apron A

45"* - 1¼ yds. (115cm* - 1.1m)

Contrast (Pocket Band, Front Band, Neck Straps, Tie Ends, Lower Band)

45"* - 1 yd. (115cm* - 0.9m)

Apron B

45"* - 1¼ yds. (115cm* - 1.1m)

Contrast (Pocket Band, Neck Straps, Tie Ends, Front Band, Ruffle)

45"* - 1¼ yds. (115cm* - 1.1m)

Bag Holder C - 28" Tall (71cm)

45"* - ¾ yd. (115cm* - 0.3m)

Contrast 2 (Bodice Front and Back, Sleeves, Skirt Front and Back):

45"* - 1 yd. (115cm* - 0.9m)

Contrast 3 (Apron): 45"* - ¾ yd. (115cm* - 0.7m)

C,D Contrast 1 (Body Front and Back): 45"* - ¾ yd. (115cm* - 0.3m)

C,D Upper Beak: 6" x 4" (15cm x 10cm) fabric or felt remnant

C,D Lower Beak: 4" x 4" (10cm x 10cm) fabric or felt remnant

Tea Cozy D - 15" Tall (38cm)

45"* - ¾ yd. (115cm* - 0.3m)

Contrast 2 (Bodice Front and Back, Sleeves, Skirt Front and Back):

45"* - ¾ yd. (115cm* - 0.6m)

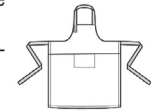
Contrast 3 (Apron, Waistband and Tie End): 45"* - ¾ yd. (115cm* - 0.3m)

Contrast 4 (Petticoat): 54" - ¾ yd. (115cm* - 0.3m)

Trivet E - 13" L x 17" W (33cm x 43cm)

45"* - ½ yd. (115cm* - 0.5m)

Padding: 45"* - ½ yd. (115cm* - 0.5m)



A



B



C



D

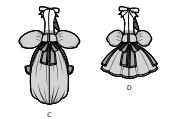
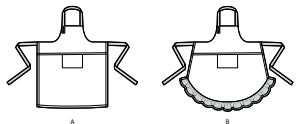
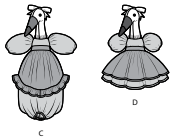
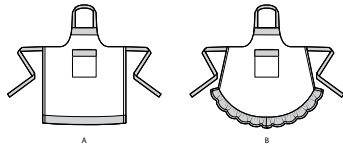


E

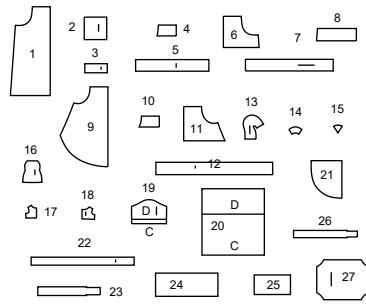
*with nap **without nap

Simplicity

Thank you for purchasing this Simplicity pattern. We made every effort to provide you with a high quality product.



27 PIECES



- 1 APRON - A
- 2 POCKET - A,B
- 3 POCKET BAND - A,B
- 4 FRONT BAND - A
- 5 NECK STRAP - A,B
- 6 FACING - A
- 7 TIE END - A,B
- 8 LOWER BAND - A
- 9 APRON - B
- 10 FRONT BAND - B
- 11 FACING - B
- 12 RUFFLE - B
- 13 HEAD - C,D
- 14 UPPER BEAK - C,D
- 15 LOWER BEAK - C,D
- 16 BODY FRONT AND BACK - C,D
- 17 BODICE FRONT - C,D
- 18 BODICE BACK - C,D
- 19 SLEEVE - C,D
- 20 SKIRT FRONT AND BACK - C,D
- 21 APRON - C
- 22 RUFFLE - C
- 23 WAISTBAND AND TIE END - C
- 24 PETTICOAT - D
- 25 APRON - D
- 26 APRON WAISTBAND AND TIE END - C
- 27 TRIVET - E

General Directions

The Pattern

- SYMBOLS**
- GRAIN LINE: Place on straight grain of fabric parallel to selvage
 - PLACE SOLID LINE on fold of fabric.
 - CENTER FRONT OR BACK of garment.
 - NOTCHES
 - DOTS
 - CUTTING LINE
 - LENGTHEN OR SHORTEN LINES

SEAM ALLOWANCE: 5/8" (1.5cm) unless otherwise stated is included but not printed on MULTI-SIZE PATTERNS. Mark your size with colored felt tip pen. See chart on tissue for how to use MULTI-SIZE PATTERNS.

ADJUST IF NEEDED
Make adjustments before placing pattern on fabric.

TO LENGTHEN:
Cut pattern between lengthen or shorten lines. Spread pattern evenly, the amount needed and tape to paper.

TO SHORTEN:
At lengthen or shorten lines, make an even pleat taking up amount needed. Tape in place.

When lengthen or shorten lines are not given, make adjustments at lower edge of pattern.

Cutting/Marking

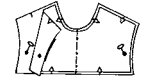
BEFORE CUTTING:
PRESS pattern pieces with a warm dry iron. PRE-SHRINK fabric by pre-washing washables or steam-pressing non-washables.

CIRCLE your cutting layout.
PIN pattern to fabric as shown in Cutting Layouts.

- FOR DOUBLE THICKNESS: Fold fabric with RIGHT sides together.
- FOR SINGLE THICKNESS: Place fabric RIGHT side up.
- FOR PILE, SHADED OR ONE WAY DESIGN FABRICS: Use "with nap" layouts

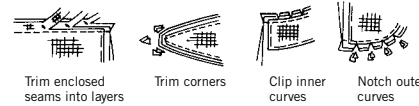
AFTER CUTTING:
Transfer markings to WRONG side of fabric before removing pattern. Use pin and chalk method or dressmaker's tracing paper and wheel.

- To Quick Mark:**
- Snip edge of fabric to mark notches, ends of fold lines and center lines.
 - Pin mark dots.



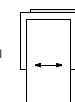
Sewing

- SEW garment following **Sewing Directions**.
- PIN or machine-baste seams matching notches.
- STITCH 5/8" (1.5 cm) seams unless otherwise stated.
- PRESS seams open unless otherwise indicated clipping when necessary so seams will lie flat.
- TRIM seams to reduce bulk, as shown below.

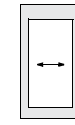


SPECIAL CUTTING NOTES

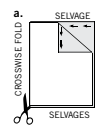
★ If layout shows a piece extending past fold, cut out all pieces except piece that extends.



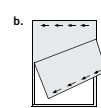
Open out fabric to single thickness. Cut extending piece on RIGHT side of fabric in position shown.



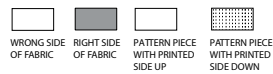
✱ Mark small arrows along both selvages indicating direction of nap or design. Fold fabric crosswise with RIGHT sides together, and cut along fold (a).



Turn one fabric layer around so arrows on both layers go in the same direction. Place RIGHT sides together (b).



Cutting Layouts

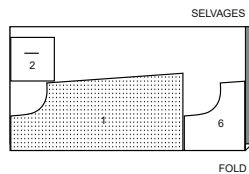


★ SEE SPECIAL CUTTING NOTES

POSITION OF PATTERN PIECES MAY VARY SLIGHTLY ACCORDING TO YOUR PATTERN SIZE

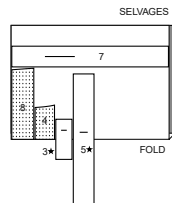
APRON A USE PIECES 1 2 6

45" (115CM) WITH NAP



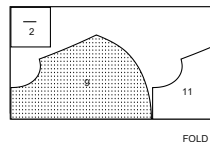
CONTRAST (POCKET BAND, FRONT BAND, NECK STRAP, TIE ENDS, LOWER BAND) USE PIECES 3 4 5 7 8

45" (115CM) WITH NAP



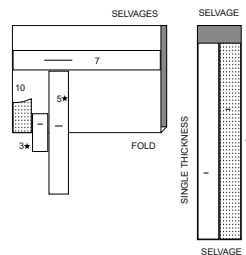
APRON B USE PIECES 2 9 11

45" (115CM) WITH NAP



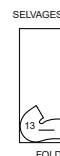
CONTRAST (POCKET BAND, NECK STRAP, TIE ENDS, FRONT BAND, FACING, RUFFLE) USE PIECES 3 5 7 10 12

45" (115CM) WITH NAP



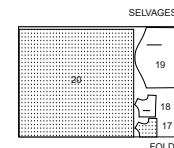
BAG HOLDER C PIECE 13

45" (115CM) WITH NAP



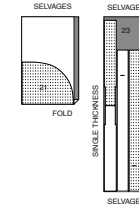
CONTRAST 2 (BODICE FRONT AND BACK, SLEEVES, SKIRT FRONT AND BACK) PIECES 17 18 19 20

45" (115CM) WITH NAP



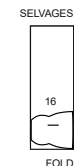
CONTRAST 3 (APRON) PIECES 21 22 23

45" (115CM) WITH NAP



C,D CONTRAST 1 (BODY FRONT AND BACK) PIECE 16

45" (115CM) WITH NAP

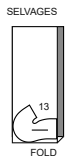


C,D UPPER BEAK CUT ONE OF PIECE 14 FROM 6" x 4" (15cm x 10cm) FABRIC OR FELT REMNANT.

C,D LOWER BEAK CUT ONE OF PIECE 15 FROM 4" x 4" (10cm x 10cm) FABRIC OR FELT REMNANT.

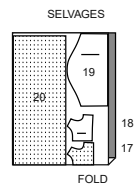
TEA COZY D USE PIECE 13

45" (115CM) WITH NAP



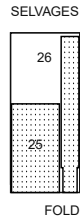
CONTRAST 2 (BODICE FRONT AND BACK, SLEEVES, SKIRT FRONT AND BACK) USE PIECES: 17 18 19 20

45" (115CM) WITH NAP



CONTRAST 3 (APRON, WAISTBAND AND TIE ENDS)
USE PIECES 25 26

45" (115CM)
WITH NAP



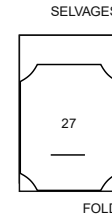
CONTRAST 4 (PETTICOAT)
USE PIECE 24

54" (140CM) NET



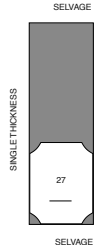
TRIVET E
USE PIECE 27

45" (115CM)
WITH NAP



PADDING
PIECE 27

45" (115CM)
WITHOUT NAP

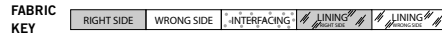


SEWING TUTORIALS



Build your skills viewing short, easy-to-follow videos at simplicity.com/sewingtutorials

Sewing Directions



Sewing methods in **BOLD TYPE** have Sewing Tutorial Video available. Scan QR CODE to watch videos:

- GATHER** - See Gathering: "sewing two row gathers" video.
- EDGESTITCH** - See Machine Stitches: "how to edgestitch" video.
- NARROW HEM** - See Hems: "sewing narrow hems" video.
- REINFORCE** - See Machine Stitches: "how to reinforce" video.
- SLIPSTITCH** - See Hand Stitching: "how to slip stitch" video.
- STAYSTITCH** - See Machine Stitches: "how to do staystitching" video.
- TOPSTITCH** - See Machine Stitches: "how to topstitch" video.
- TRIM** - See Seams: "how to Trim, Clip, and Layer Seams" video.
- UNDERSTITCH** - See Machine Stitches: "how to understitch" video.

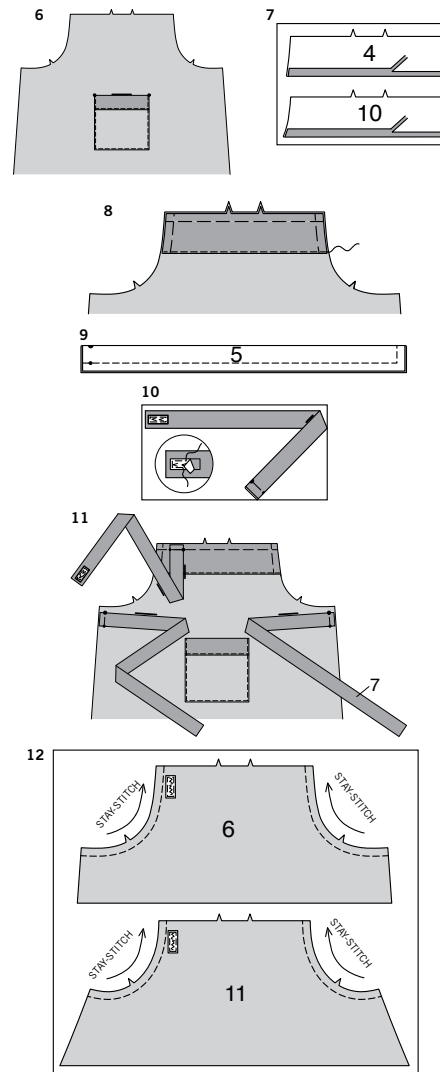
PATTERN PIECES WILL BE IDENTIFIED BY NUMBERS THE FIRST TIME THEY ARE USED.

STITCH 5/8" (1.5CM) SEAMS WITH RIGHT SIDES TOGETHER UNLESS OTHERWISE STATED.

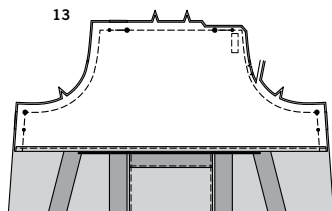
VIEWS A, B

NOTE: First View is illustrated unless otherwise indicated.

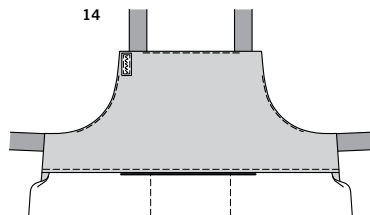
- 1. STAYSTITCH** armhole edges of FRONT (1 or 9) 1/2" (1.3cm) away from raw edge in direction of arrows. Staystitching won't be shown in the following illustrations.
- 2.** Press under 5/8" (1.5cm) on long unnotched edge of POCKET BAND (3); trim to 3/8" (1cm).
- 3.** With **RIGHT** sides facing up towards you and raw edges even, pin band over one POCKET (2) section, matching large dots. Baste raw edges together. Baste pressed edge of band in place. The remaining pocket section will be used as the facing.
- 4.** Stitch facing to pocket along outer edges, having **RIGHT** sides together and raw edges even, leaving an opening on lower unnotched edge for turning. **TRIM** seam and corners.
- 5.** Turn pocket; press. **SLIPSTITCH** opening closed. **EDGESTITCH** pressed edge of band in place.



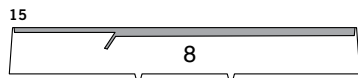
- 6.** On **OUTSIDE**, pin pocket (facing side) to front, matching large dots. **EDGESTITCH** side and lower edges.
- 7.** Press under 5/8" (1.5cm) on long unnotched edge of FRONT BAND (4 or 10); trim to 3/8" (1cm).
- 8.** With **RIGHT** sides facing up towards you, baste band to front along outer edges, matching centers and notches. **EDGESTITCH** pressed edge of band in place.
- 9.** Fold NECK STRAP (5) in half lengthwise, having **RIGHT** sides together. Stitch raw edges, leaving end with small and large dots open. **TRIM** seam.
- 10.** Turn strap; press. Baste raw edges together. Cut piece of hook and loop tape to fit the length of placement line on strap. Cut tape in half lengthwise and save the remaining piece for a future project. Separate tape. Pin rough half of tape to finished end of neck band within placement line; stitch close to outer edges. Set aside soft half of tape for facing.
- 11.** On **OUTSIDE**, baste strap to upper right side of front, matching small and large dots, as shown. Make each tie end (7) in same manner as for neck band, omitting tape. Baste to side edges of apron, matching small and large dots.
- 12. STAYSTITCH** armhole edges of FACING (6 or 11) same as for front. On **OUTSIDE**, stitch soft half of hook and loop tape to facing within placement line.



- 13.** Make a **NARROW HEM**, on lower edge of facing. Stitch facing to front along raw edges, matching centers and notches. **TRIM** seam and corners. Clip curves.



- 14.** **UNDERSTITCH** neck and armhole edges by pressing facing and seam away from front, stitching through facing and seam allowances close to seam as far as possible. Turn facing to **INSIDE**; press.



CONTINUE AS FOLLOWS FOR VIEW A

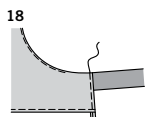
- 15.** Press under 5/8" (1.5cm) on long unnotched edge of **LOWER BAND (8)**; trim to 3/8" (1cm).



- 16.** Pin **RIGHT** side of band to **WRONG** side of front, matching centers and double notches. Stitch notched edges. **TRIM**.



- 17.** Turn band to **OUTSIDE**; press. Baste raw edges together. **EDGE STITCH** pressed edge of band in place.

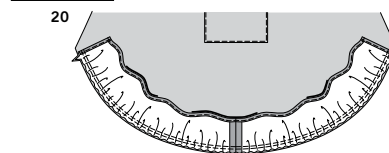


- 18.** **NARROW HEM** side edges, extending stitching to upper edge of apron.

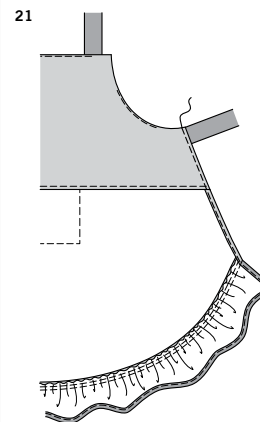
CONTINUE AS FOLLOWS FOR VIEW B



- 19.** Stitch double-notched ends of **RUFFLE (12)** together. **NARROW HEM** side and lower edges of ruffle. **GATHER** upper edge of ruffle between notches along 5/8" (1.3cm) seam line and 1/4" (6mm) away within seam allowance.



- 20.** Pin ruffle to lower edge of front, matching centers and notches, having ends 5/8" (1.3cm) in from raw edges of apron. Pull up gathers to fit; baste. Stitch. Stitch again 1/4" (6mm) away from first stitching within seam allowance. Press ruffle out, pressing seam toward apron.

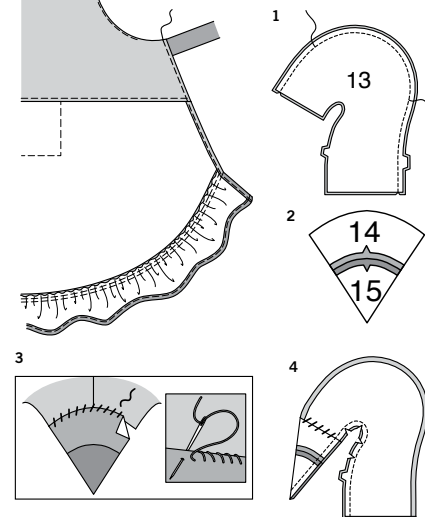


- 21.** **NARROW HEM** side edges of front, extending stitching to upper edge of apron.

VIEWS C, D

FLAMINGO C, D

NOTE: *Stitch seams of flamingo, bag holder, and tea cozy in 1/4" (6mm) seams.*



- 1.** Stitch center back seam of **HEAD (13)**, matching triple notches. **REINFORCE** seam by stitching along previous stitching along curves. Clip curves to reinforcing stitching if necessary, being careful not to clip into stitching.

- 2.** Stitch **UPPER BEAK (14)** to **LOWER BEAK (15)**, matching notches.

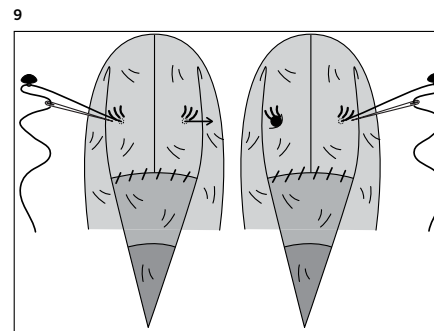
- 3.** Open out head. On **OUTSIDE**, pin upper beak 1/4" (6mm) over beak edge of head, having raw side edges even, easing in head to fit. Working from left to right, overcast beak in place, taking straight stitches over the edge approximately 1/8" (3mm) apart.

- 4.** Stitch center front seam of assembled head, matching seams and double notches. **REINFORCE** inner curves and clip to stitching where necessary.

- 5.** Turn head. Stuff to within 1/4" (6mm) of neck edge, gently stuffing beak so as not to distort overcast stitches.

Tips for Stuffing:

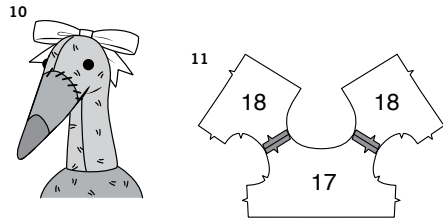
- Pull fiberfill apart and fluff it before you use it. Break apart the lumps and thick spots.
- Use pieces about the size of a ping pong ball for small sections or tennis ball for large sections. Pack into place using the end of a long handed wooden spoon, chopstick, or crochet hook.
- Pack firmly in place each time stuffing is added. Use both hands to mold and shape, being careful not to over stuff or make lopsided.
- Stitch body (16) sections together along outer edges, leaving neck edge open. **REINFORCE** sides at inner corner. Clip to stitching at inner corners.
- Turn body. Stuff as far as raw edge.
- Slip neck edge of head 1/2" (1.3cm) over body, matching small and large dots, and 1/4" (6mm) seam lines on neck; pin in place. Overcast or hand-sew raw edge in place.



- 9.** Using your marker, draw eyelashes along solid lines on head. Thread a needle with strong thread. Sew button to one side of head at small dot for eye; draw needle through head, coming out at remaining small dot for eye, as shown. Pull thread taut to indent eyes and fasten.

S9973

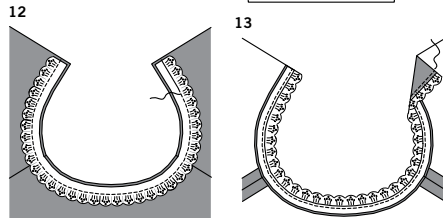
4 of 5



- 10.** Hand-sew center of ribbon to top of head approximately 2" (2.5cm) above eyes and over seam. Fasten ribbon into bow. Trim ends in a "V" shape, as shown.

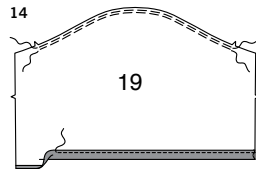
BAG HOLDER C OR TEA COZY D

- 11.** Stitch BODICE FRONT (17) to BODICE BACK (18) sections at shoulders.

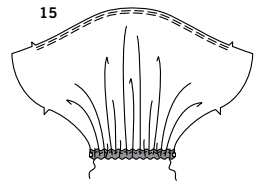


- 12.** With RIGHT sides together, pin lace trim to neck edge, having stitching that holds gathers in place along 1/4" (6mm) seam line. Stitch along seam line.

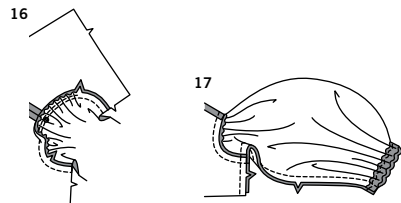
- 13.** Turn trim away from neck, turning seam allowance to WRONG side. Press. On OUTSIDE, EDGESTITCH neck edge, stitching through seam allowances.



- 14.** GATHER upper edge of SLEEVE (19) between notches along 1/4" (6mm) seam line and 1/8" away within seam allowance. Press under 5/8" (1.5cm) on lower edge of sleeve, forming casing. Press under 1/4" (6mm) on inner pressed edge. Stitch close to inner pressed edge.

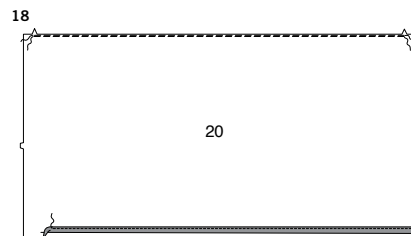


- 15.** For each sleeve, cut one piece of elastic 4" (10cm) long. Insert elastic through casing, having raw edges even. Stitch 1/4" (6mm) from raw edges. Distribute fullness evenly.

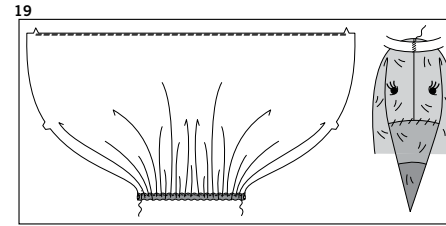


- 16.** Pin sleeve to armhole edge, matching notches and placing small dot at shoulder seam. Adjust gathers to fit; baste. Stitch seam. Press seam toward sleeve.

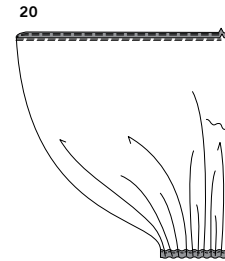
- 17.** Pin underarm/side seam, matching armhole seams. Stitch entire seam.

**SKIRT C**

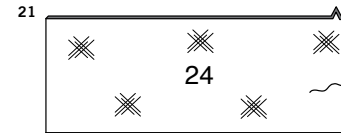
- 18.** GATHER upper edge of SKIRT FRONT AND BACK (20) GATHER upper edge between notches. Form casing on lower edge in same manner as for sleeve.



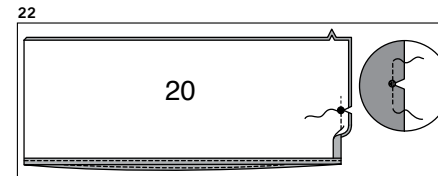
- 19.** Cut one piece of elastic 9" (23cm) long. Insert elastic through casing, having raw edges even. Stitch 1/4" (6mm) from raw edges. Distribute fullness evenly.



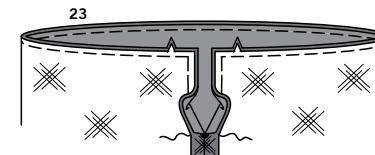
- 20.** Stitch center back seam of skirt below large dot, back-stitching at large dot to reinforce seam.

**SKIRT D**

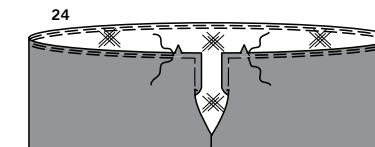
- 21.** Stitch center back seam of PETTICOAT (24) below large dot, back-stitching at large dot to reinforce seam.



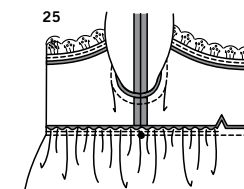
- 22.** To reinforce SKIRT FRONT AND BACK (20), using fine stitches, stitch along seam line for about 1" (2.5cm) on each side of large dot, stitching through large dot. Stitch center back seam below large dot, back-stitching at large dot to reinforce seam. Clip to stitching or large dot, being careful not to clip through stitching. **NARROW HEM** lower edge.



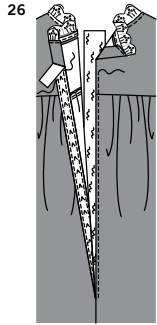
- 23.** With WRONG sides facing up towards you, insert skirt into petticoat. Pin raw edges together above clip, matching centers, seams, and large dots. Stitch upper and back opening edges, breaking and reinforcing stitching at large dot.



- 24.** GATHER upper edge of skirt between notches.

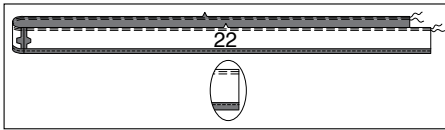
CONTINUES AS FOLLOWS FOR VIEWS C, D

- 25.** Pin skirt to lower edge of bodice, matching centers and seams, placing small dots at side seams. Pull up gathering stitches to fit between notches; baste. Stitch. Press seam toward bodice.



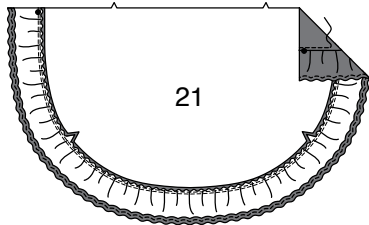
- 26.** Press under 1/2" (1.3cm) on back opening edges of dress. Cut one piece of hook and loop tape 4" (10cm) long. Cut tape in half lengthwise and save the remaining piece for a future project. Separate tape. Stitch hook (rough) half to WRONG side of LEFT back opening edge. Stitch RIGHT back opening edge just over one long edge of loop (soft) half of tape in same manner. (Note that the loop side extends beyond the back opening edge... this is to reduce bulk at back opening.) Stuff sleeves with fiberfill to achieve fullness as shown on envelope. Store plastic bags in skirt.

27



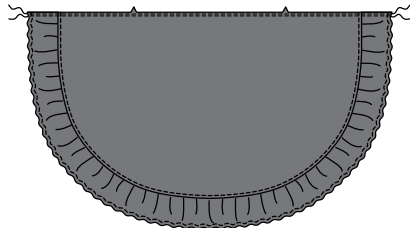
- 27. FOR APRON C** - Stitch notched ends of RUFFLE (22) sections together, forming one long ruffle. This seam is the center front seam. **GATHER** notched edge along 1/4" (6mm) seam line and 1/8" (3mm) away within seam allowance. Finish long unnotched edge with a **NARROW HEM**.

28



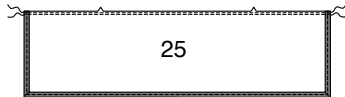
- 28.** With RIGHT sides together and raw edges even, pin ruffle to outer curved edge of APRON (21), matching centers front and small dots. Adjust gathering stitches to fit; baste. Stitch. Press ruffle out, pressing seam toward skirt. **EDGESTITCH** apron close to seam

29



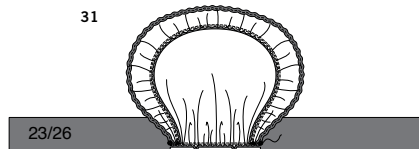
- 29. GATHER** upper edge of apron.

30



- 30. FOR APRON D** - Make **NARROW HEM** on side and lower unnotched edges of APRON (25). **GATHER** upper notched edge.

31



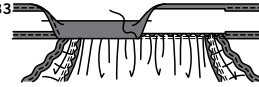
- 31. FOR APRONS C, D** - Pin apron to one long edge of WAISTBAND AND TIE END (23 or 26), matching large dots. Pull up gathering stitches to fit; baste. Stitch between large dots.

32



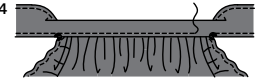
- 32.** Turn under remaining raw edges of waistband and tie along 1/2" (1.3cm) hem line and 1/4" (6mm) seam line, as shown. **NARROW HEM** tie ends between large dots on each side of center front.

33



- 33.** Turn waistband to WRONG side and **SLIPSTITCH** pressed edge over apron.

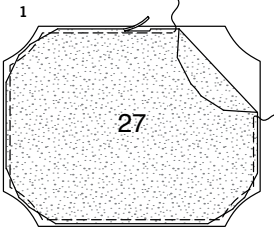
34



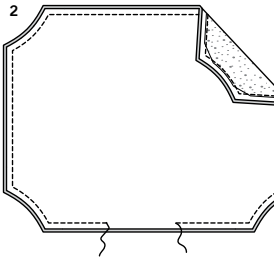
- 34.** On OUTSIDE, **TOPSTITCH** waistband a scant 1/4" (6mm) between large dots, connecting with hem stitching.

VIEW E

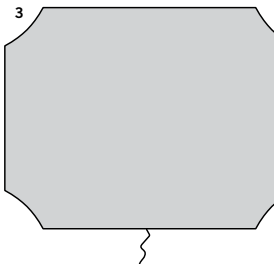
NOTE: Stitch trivet in a 3/8" (1cm) seam.



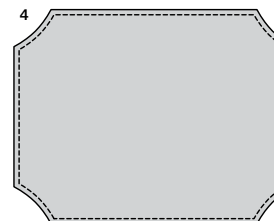
- 1.** Pin heat resistant padding to WRONG side of one TRIVET (27) section, having raw edges even. Trim corners, as shown. Baste 1/4" (6mm) from raw edges. Trim close to basting.



- 2.** Pin trivet sections together along outer edges. Stitch in a 3/8" (1cm) seam, leaving an opening for turning. **TRIM SEAM** and corners; clip curves if necessary.



- 3.** Turn trivet; press. **SLIPSTITCH** opening closed.



- 4.** On OUTSIDE, **TOPSTITCH** trivet 1/4" (6mm) from finished edges or at desired width.



Congrats!

You've completed your sewing adventure

**SHARE
YOUR** LOOK



Post your pattern and tag us
@simplicity_creative_group and **#simplicitypatterns**
for a chance to be featured on our social media.

Look for more PDF patterns at [simplicity.com](https://www.simplicity.com)

Have a question or need help with your sewing project call us at
1-888-588-2700



Simplicity ©2024 a division of IG Design Group Americas Inc. • Atlanta, GA 30342 USA www.thedesigngroup.com • All Rights Reserved. www.simplicity.com • Made in the U.S.A. Fabriqué aux États-Unis.

To be used for individual private home use only and not for commercial or manufacturing purposes. • A usage privé seulement et non à des fins commerciales ou de production en série. • Para uso privado solamente, no se puede utilizar con propósitos de comercialización o de producción en serie.