

S9972

Simplicity[®]



Designed and printed in USA.

easy-to-sew

Shop all the pattern brands you love @

Simplicity[®].com

Very Easy

10" (26CM) PLUSH BIRDS

Suggested Fabrics: Fleece, Low Pile Faux Fur, Minky Fleece. **Beak A,B,C,D and Eye Patch Appliqués C,D** in Felt. **Interfacing A,C,D:** Fusible Fleece. **Interfacing B:** Lightweight Fusible.

Notions: **A,B,C,D:** Polyfiberfill. **Also for A:** Large (30mm) safety eyes. **B,C:** Small (10mm) safety eyes, 7" (18cm) length of feather boa trim. **D:** Small (13mm) safety eyes.

Owl Plush A

60"* - 1/2 yd. (150cm* - 0.5m)

Contrast (Head Front, Wings): 60"* - 3/8 yd. (150cm* - 0.2m)

Interfacing - 5" x 10" (13cm x 25cm) remnant

Beak - 3" x 2" (8cm x 5cm) remnant in each of felt and paper-backed fusible web

Canary Plush B

60"* - 1/2 yd. (150cm* - 0.5m)

Interfacing - 7" x 6" (18cm x 15cm) remnant

Beak B,C,D - 5" x 3" (13cm x 8cm) felt remnant

Cardinal Plush C

60"* - 3/8 yd. (150cm* - 0.6m)

Interfacing: 4 1/2" - 3/8 yd. (115cm* - 0.2m)

Eye Patch - 6" x 3" (15cm x 8cm) remnant in each of felt and paper-backed fusible web

Blue Jay Plush D

60"* - 1/2 yd. (150cm* - 0.5m)

Contrast (Body Front, Lower Side): 60" - 3/8 yd. (150cm* - 0.3m)

Interfacing: 4 1/2" - 3/8 yd. (115cm* - 0.2m)

Eye Patch Appliqué - 4" x 2" (10cm x 5cm) remnant in each of felt and paper-backed fusible web



A



B



C

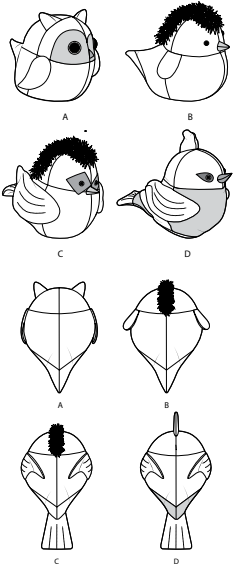


D

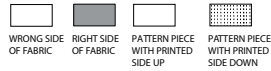
*with nap **without nap

Simplicity® S9972

Thank you for purchasing this Simplicity pattern. We made every effort to provide you with a high quality product.



Cutting Layouts



POSITION OF PATTERN PIECES MAY VARY SLIGHTLY ACCORDING TO YOUR PATTERN SIZE.

General Directions For Cutting

PRE-SHRINK and iron all fabric.

FOR DOUBLE THICKNESS -Fold fabric with **RIGHT** sides together. Pin pattern to **WRONG** side of fabric.

FOR SINGLE THICKNESS -Pin pattern to **RIGHT** side of fabric.

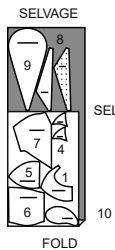
★ If layout shows a piece extending past fold, cut out all pieces except piece that extends. Open out fabric to single thickness. Cut extending piece on **RIGHT** side of fabric in position shown.

✱ Mark small arrows along both selvages in dictating direction of nap or design. Fold fabric crosswise with **RIGHT** sides together, and cut along fold. Turn one fabric layer around so arrows on both layers go in the same direction. Place **RIGHT** sides together.

OWL PLUSH A

USE PIECES 1 4 5 6 7 8 9 10

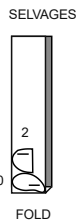
60" (150CM)
WITH NAP



CONTRAST (HEAD FRONT, WINGS)

USE PIECES 2 10

60" (150CM)
WITH NAP



INTERFACING

CUT TWO OF PIECE 2 FROM 10" x 5" (25cm x 13cm) REMNANT.

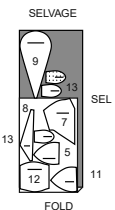
BEAK

CUT ONE OF PIECE 3 FROM EACH OF 3" x 2" (8cm x 5cm) FELT AND PAPER BACKED FUSIBLE WEB REMNANTS.

CANARY PLUSH B

USE PIECES 5 7 8 9 11 12 13

60" (150CM)
WITH NAP



INTERFACING

CUT TWO OF PIECE 13 FROM 7" x 6" (18cm x 15cm) REMNANT.

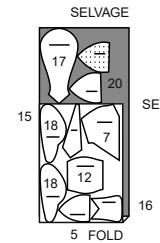
BEAK B,C,D

CUT ONE OF PIECE 14 FROM 5" x 3" (13cm x 8cm) FELT REMNANT.

CARDINAL PLUSH C

USE PIECES 5 7 12 15 16 17 18 20

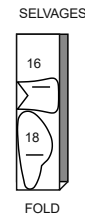
60" (150CM)
WITH NAP



INTERFACING

USE PIECES 16 18
CUT ONE OF PIECE 16.

45" (115CM)



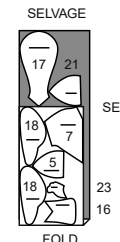
EYE PATCH

CUT ONE OF PIECE 19 FROM EACH OF 6" x 3" (15cm x 8cm) FELT AND PAPER BACKED FUSIBLE WEB REMNANTS.

BLUE JAY PLUSH D

USE PIECES 5 7 16 17 18 21 23

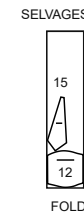
60" (150CM)
WITH NAP



CONTRAST (BODY FRONT, LOWER SIDE)

USE PIECES 12 15

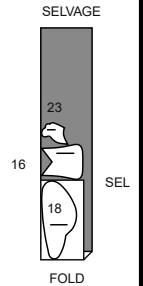
60" (150CM)
WITH NAP



INTERFACING

USE PIECES 16 18 23

45" (115CM)



EYE PATCH

CUT ONE OF PIECE 22 FROM EACH OF 4" x 2" (10cm x 5cm) FELT AND PAPER BACKED FUSIBLE WEB REMNANTS.

Sewing Directions

FABRIC KEY



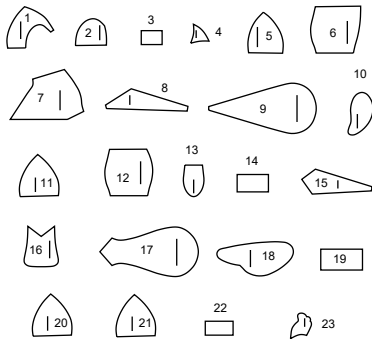
Read **General Directions** before you begin.

Sewing methods in **BOLD TYPE** have Sewing Tutorial Video available. Scan QR CODE to watch videos:

SLIPSTITCH – see Hand Stitching: “how to slip stitch” video.

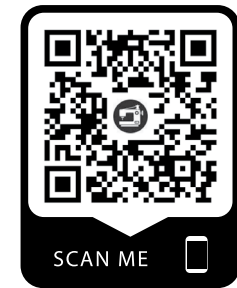
TRIM SEAM – see Seams: “how to trim, clip and layer seams” video.

23 PIECES



- 1 HEAD - A
- 2 HEAD FRONT - A
- 3 BEAK - A
- 4 EAR - A
- 5 HEAD BACK - A,B,C,D
- 6 BODY FRONT - A
- 7 BODY BACK - A,B,C,D
- 8 LOWER SIDE - A,B
- 9 BOTTOM - A,B
- 10 WING - A
- 11 HEAD FRONT - B
- 12 BODY FRONT - B,C,D
- 13 WING - B
- 14 BEAK - B,C,D
- 15 LOWER SIDE - C,D
- 16 TAIL - C,D
- 17 BOTTOM - C,D
- 18 WING - C,D
- 19 EYE PATCH APPLIQUE - C
- 20 HEAD FRONT - C
- 21 HEAD FRONT - D
- 22 EYE PATCH APPLIQUE - D
- 23 CREST - D

SEWING TUTORIALS

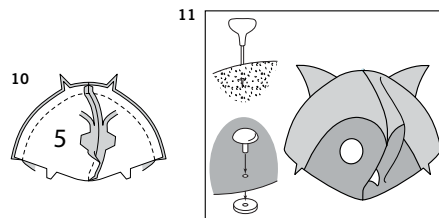
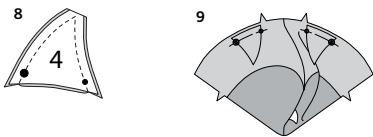
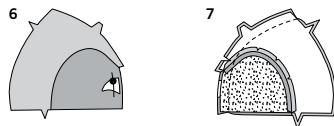
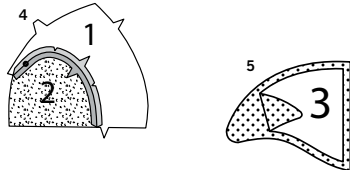
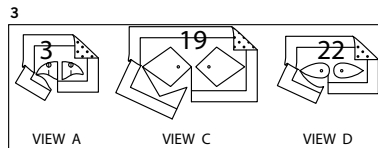
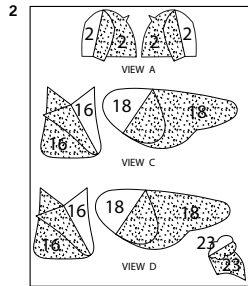
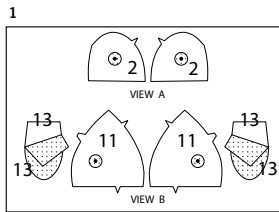


Build your skills viewing short, easy-to-follow videos at simplicity.com/sewingtutorials

PATTERN PIECES WILL BE IDENTIFIED BY NUMBERS THE FIRST TIME THEY ARE USED.
STITCH 1/2" (1.5CM) SEAMS WITH RIGHT SIDES TOGETHER UNLESS OTHERWISE STATED.

S9972

2 of 4



OWL A, CANARY B, CARDINAL C, BLUE JAY D

INTERFACING

- Pin light weight fusible interfacing to WRONG side of WING (13) for View B.
To reinforce fabric for safety eyes, cut 1" (2.5cm) circles from remnants of fusible interfacing. Pin circles, centering over small dots for eyes to WRONG side of HEAD FRONT (2) for View A; or HEAD FRONT (11) for View B.
Fuse interfacing in place following manufacturer's directions.

- Pin fusible fleece interfacing to WRONG side of HEAD FRONT (2) for View A; TAIL (16) and WING (18) for View C; or TAIL (16), WING (18), and CREST (23) for View D.

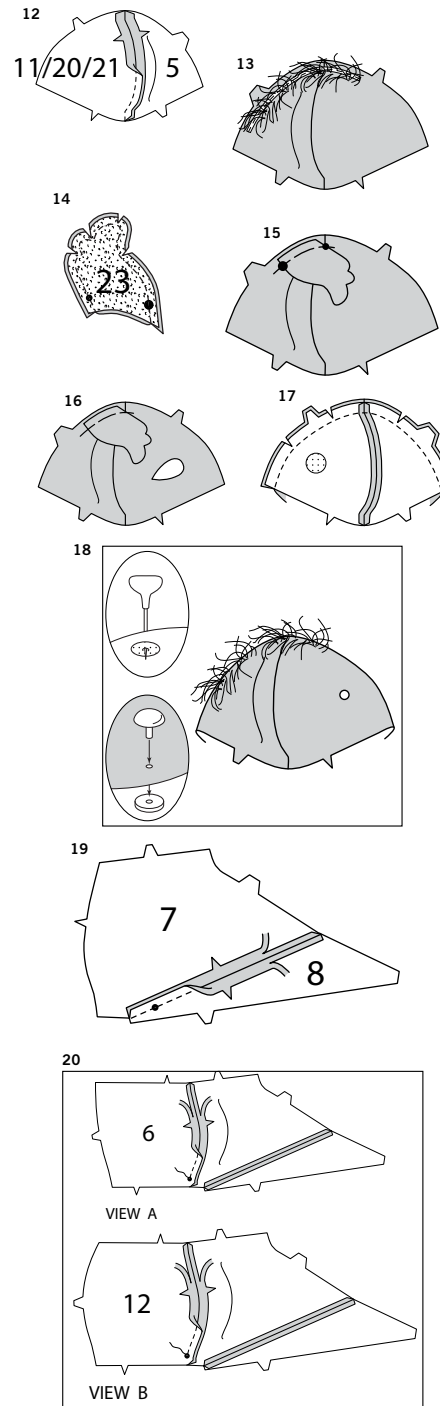
PAPER BACKED FUSIBLE WEB

- To prepare appliqué BEAK (3) for View A; EYE PATCH (19) for View C; EYE PATCH APPLIQUÉ (22) for View D, apply paper backed fusible web to WRONG side of appliqué fabric following manufacturer's directions. Cut appliqué tissue block along outer solid line. Pin pattern to RIGHT side of prepared fabric. Cut out each appliqué. Transfer markings to RIGHT side of appliqué using a washable fabric marking pen or pencil.

NOTE: It may be helpful to baste along seamlines on all pieces before stitching seams. This will allow for clipping seam allowances to stitching where necessary when stitching curves. Clip sparingly, as clipping will weaken the seam.

HEAD A

- With RIGHT sides together and raw edges even, pin HEAD (1) to HEAD FRONT (2), matching small dots and notches. Stitch in a 1/4" (6mm) seam.
- Fuse BEAK (3) sections with WRONG sides together following manufacturer's directions.
- On OUTSIDE, pin beak to one head front section with raw edges even, matching large dots at upper edge of beak. Baste.
- Stitch center front edges of head together. **TRIM SEAM.**
- To make each ear, pin two EAR (4) sections with RIGHT sides together. Stitch in a 1/4" (6mm) seam, leaving an opening between small and large dots for turning. **TRIM SEAM.**
- Turn ears; press. On OUTSIDE, pin ears to head, matching small and large dots; baste.
- Stitch HEAD BACK (5) sections together at center back. Stitch front to back at side edges. **TRIM SEAMS.**
- Using a sharp pointed tool or an awl, poke a hole at small dots for safety eyes. Insert the eye shank through the opening from OUTSIDE and on INSIDE hold in place with washer, securely.



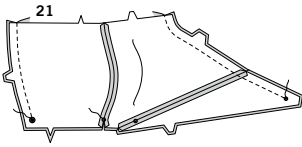
HEAD B, C, D

- With RIGHT sides together and raw edges even, pin HEAD BACK (5) to HEAD FRONT (11) for View B; HEAD FRONT (20) for View C; or HEAD FRONT (21) for View D at side edges, matching notches. Stitch. **TRIM SEAM.**
- FOR VIEWS B, C** – Cut two (or more, depending on density) pieces of feather boa trim 7" (18cm) long. On OUTSIDE, pin trim to one front and back section along center edge with straight edge of trim within the seam allowance and lower edge 1" (2.5cm) above back neck edge, as shown. Baste in place along straight edge of trim.
- FOR VIEW D**
- Pin two CREST (23) sections with RIGHT sides together. Stitch in a 1/4" (6mm) seam, leaving an opening between small and large dots for turning. **TRIM SEAM.**
- Turn crest; press. On OUTSIDE, pin crest to one head section along center edge, matching small and large dots; baste.
- Pin EYE PATCH APPLIQUÉ (22) sections to head front along broken lines. Fuse in place, following manufacturer's directions.
- FOR VIEWS B, C, D** – With RIGHT sides together and raw edges even, pin center edges of head. Stitch. **TRIM SEAM.**

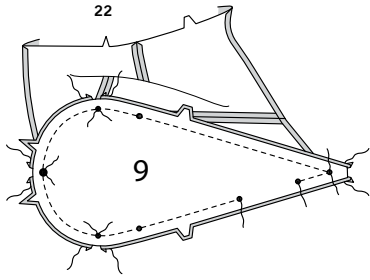
- FOR VIEWS B, D** – Using a sharp pointed tool or an awl, poke a hole at small dots for safety eyes. Insert the eye shank through the opening from OUTSIDE and on INSIDE hold in place with washer, securely.

BODY A, B

- With RIGHT sides together and raw edges even, pin lower edge of BODY BACK (7) to LOWER SIDE (8), matching small dots and notches. Stitch. **TRIM SEAM.**
- With RIGHT sides together and raw edges even, pin body back to BODY FRONT (6) for View A; or BODY FRONT (12) for View B, at side edges, matching small dots and notches. Stitch from neck edge to small dot, backstitching at dot to reinforce the seam. **TRIM SEAM.**



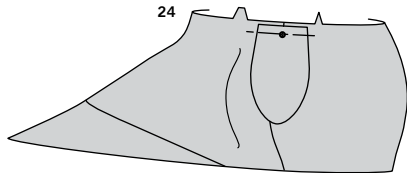
21. With RIGHT sides together and raw edges even, pin body sections together at front and back edges. Stitch from neck edge to small or large dot, backstitching at dot to reinforce the seam. **TRIM SEAM.**



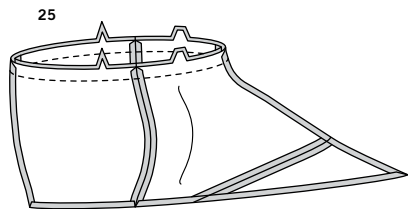
22. With RIGHT sides together and raw edges even, pin body to BOTTOM (9), matching small dots, large dots, and notches. Stitch, breaking stitching at open seams and backstitching to reinforce, and leaving an opening between small dots on lower side for turning. **TRIM SEAM.**



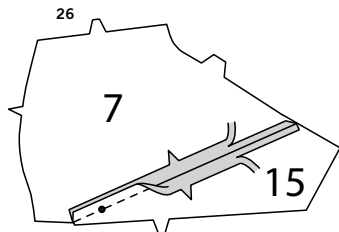
23. FOR VIEW B – To make each wing, pin two WING (13) sections with RIGHT sides together. Stitch in a 1/4" (6mm) seam, leaving edge with small dot open for turning.



24. Turn wings; press. On OUTSIDE, pin wings to body along neck edge, placing small dot at side seam; baste.

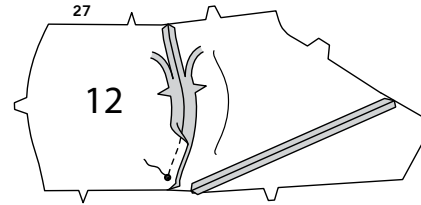


25. FOR VIEWS A, B – With RIGHT sides together and raw edges even, pin head to body at neck edge, matching seams and notches. Stitch. **TRIM SEAM.**

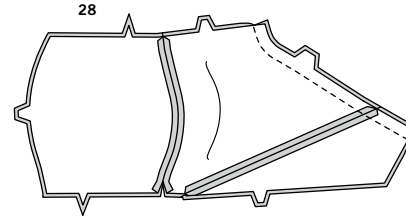


BODY C, D

26. With RIGHT sides together and raw edges even, pin lower edge of BODY BACK (7) to LOWER SIDE (15), matching small dots and notches. Stitch. **TRIM SEAM.**



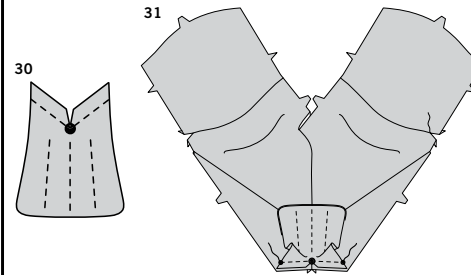
27. With RIGHT sides together and raw edges even, pin body back to BODY FRONT (12) at side edges, matching small dots and notches. Stitch from neck edge to small dot, backstitching at dot to reinforce the seam. **TRIM SEAM.**



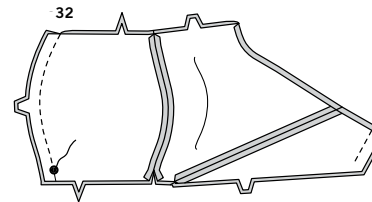
28. With RIGHT sides together and raw edges even, pin body back sections together at back edges. Stitch. **TRIM SEAM.**



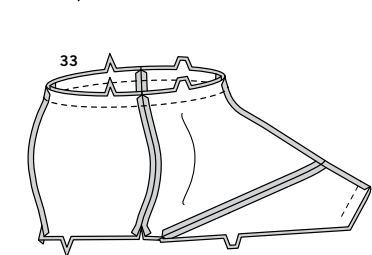
29. Pin TAIL (16) sections with RIGHT sides together. Stitch, leaving marked edges open for turning. **TRIM SEAM.**



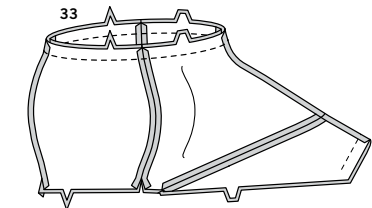
30. Turn tail; press. Stitch along stitching lines. Stitch raw edges together. Clip seam allowance of tail to stitching at large dot.



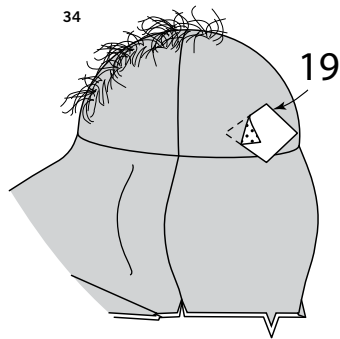
31. On OUTSIDE, pin tail to body along lower back edges, matching small and large dots, spreading clipped edges of tail apart; stitch, backstitching at small dots to reinforce the seam.



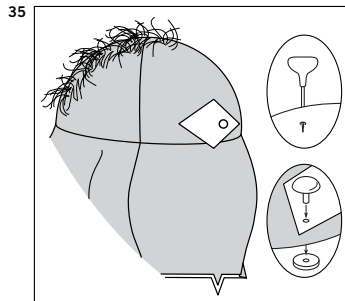
32. With RIGHT sides together and raw edges even, pin body sections together at front edges. Stitch from neck edge to large dot, backstitching at dot to reinforce the seam. **TRIM SEAM.**



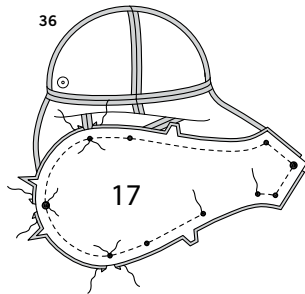
33. With RIGHT sides together and raw edges even, pin head to body at neck edge, matching seams and notches. Stitch. **TRIM SEAM.** Press, pressing head out.



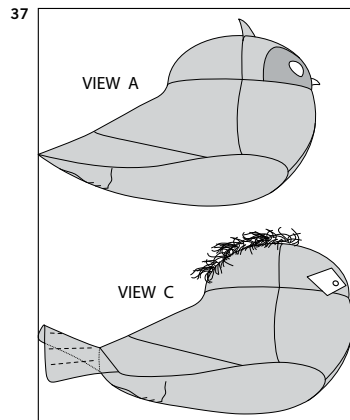
34. FOR VIEW C – On OUTSIDE, pin EYE PATCH (19) sections to head front and body along broken lines. Fuse in place, following manufacturer's directions.



35. Using a sharp pointed tool or an awl, poke a hole at small dots for safety eyes. Insert the eye shank through the opening from OUTSIDE and on INSIDE hold in place with washer, securely.

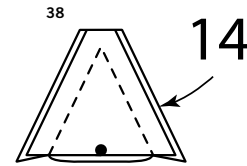


36. FOR VIEW C, D – Clip center back seam to stitching at large dot. With RIGHT sides together and raw edges even, pin body to BOTTOM (17), matching small dots, large dots, and notches. Stitch, breaking stitching at seams and backstitching to reinforce, and leaving an opening between small dots on lower side for turning. **TRIM SEAM.**

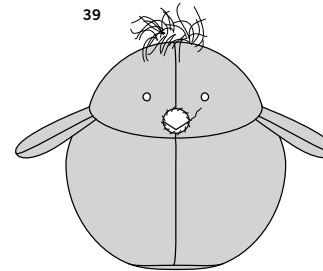


CONTINUE AS FOLLOWS FOR ALL VIEWS

37. Turn bird RIGHT side out. Press. To stuff bird, pull fiberfill apart and fluff it, breaking apart lumps and thick spots. Use pieces about the size of a golf ball. Pack into place using the end of a long handled wooden spoon. Pack firmly in place each time stuffing is added. Use both hands to mold and shape, being careful not to over stuff or make lopsided. **SLIPSTITCH** opening closed.



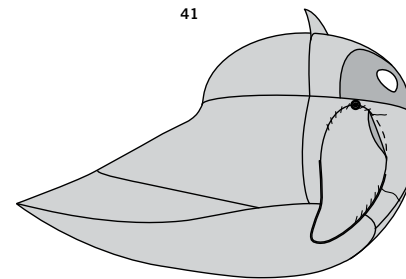
38. FOR VIEWS B, C, D – Pin BEAK (14) sections with RIGHT sides together. Stitch sides in a 1/4" (6mm) seam, leaving marked edge open. **TRIM SEAM.**



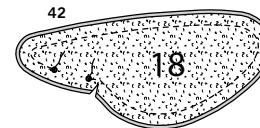
39. Turn beak; press. Stuff with fiberfill. On OUTSIDE, pin beak to bird, placing small dots along front seam, as shown on envelope, or as you prefer. **SLIPSTITCH** beak to front, invisibly.



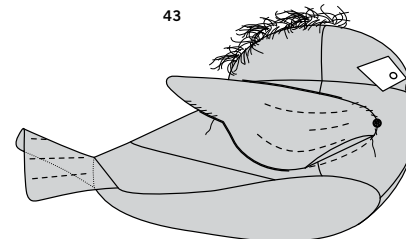
40. FOR VIEW A – To make each wing, pin WING (10) to facing with RIGHT sides together. Stitch in a 1/4" (6mm) seam, leaving an opening for turning. **TRIM SEAM.**



41. Turn wing; press. **SLIPSTITCH** opening closed, invisibly. On OUTSIDE, pin wing (facing side) to body front, placing upper edge along broken line, matching large dots. **SLIPSTITCH** in place along broken line, invisibly.



42. FOR VIEWS C, D – To make each wing, pin two WING (18) sections with RIGHT sides together. Stitch, leaving an opening between small dots for turning. **TRIM SEAM.**



43. Turn wings; press. **SLIPSTITCH** opening closed, invisibly. Stitch along stitching lines. On OUTSIDE, pin wing to body front, placing upper edge along broken line, matching large dots. **SLIPSTITCH** in place along broken line, invisibly.



Congrats!

You've completed your sewing adventure

**SHARE
YOUR** LOOK



Post your pattern and tag us
@simplicity_creative_group and **#simplicitypatterns**
for a chance to be featured on our social media.

Look for more PDF patterns at [simplicity.com](https://www.simplicity.com)

Have a question or need help with your sewing project call us at
1-888-588-2700



Simplicity ©2024 a division of IG Design Group Americas Inc. • Atlanta, GA 30342 USA www.thedesigngroup.com • All Rights Reserved. www.simplicity.com • Made in the U.S.A. Fabriqué aux États-Unis.

To be used for individual private home use only and not for commercial or manufacturing purposes. • A usage privé seulement et non à des fins commerciales ou de production en série. • Para uso privado solamente, no se puede utilizar con propósitos de comercialización o de producción en serie.