

S9969

Simplicity[®]

Learn to Sew

- ★ Apply patch pockets
- ★ Sew buttonholes
- ★ Sew curves
- ★ Line a garment to edge



Designed and printed in USA.



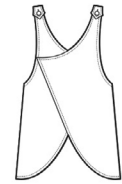
Easy

CHILDREN'S AND MISSES' REVERSIBLE APRONS

Suggested Fabrics: Broadcloth, Chambray, Chintz, Cotton Types, Lightweight Denim, Linen Types, Madras. Not suitable for one-way design fabrics or uneven plaids.

Notions: A,B: Four ¾" (2cm) buttons for Children, four 1" (2.5cm) buttons for Misses.

Sizes	CHILDREN'S			MISSES'			Yds.
	S	M	L	S	M	L	
	3-4	5-6	7-8	8-10	12-14	16-18	
Sizes-European				34-36	38-40	42-44	
Apron A (cut crosswise - includes pockets)							
45"*	⅞	⅞	1	1½	1½	1¾	"
60"*	⅞	⅞	1	1¼	1½	1½	"
115cm*	0.8	0.8	0.9	1.5	1.5	1.6	m
150cm*	0.8	0.8	0.9	1.1	1.3	1.4	"
Contrast (Apron - cut crosswise), Pockets)							
45"*	⅞	⅞	1	1½	1½	1¾	Yds.
60"*	⅞	⅞	1	1¼	1½	1½	"
115cm*	0.8	0.8	0.9	1.4	1.5	1.6	m
150cm*	0.8	0.8	0.9	1.1	1.3	1.4	"
Apron B (cut crosswise - includes pockets)							
45"*	⅞	⅞	1	1½	1½	1¾	Yds.
60"*	⅞	⅞	1	1½	1½	1¾	"
115cm*	0.8	0.8	0.9	1.4	1.5	1.6	m
150cm*	0.8	0.8	0.9	1.4	1.5	1.6	"
Contrast (Apron - cut crosswise), Pockets)							
45"*	⅞	⅞	1	1½	1½	1¾	Yds.
60"*	⅞	⅞	1	1¼	1½	1½	"
115cm*	0.8	0.8	0.9	1.4	1.5	1.6	m
150cm*	0.8	0.8	0.9	1.1	1.3	1.4	"
FINISHED GARMENT MEASUREMENTS (Includes Design and Wearing Ease)							
Finished back length from base of neck							
Apron A,B	19½	21	22½	37½	38	38½	Ins.
	(50)	(53)	(57)	(96)	(97)	(98)	(cm)



A,B

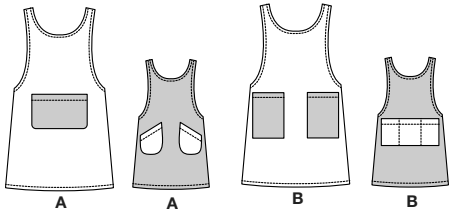
*with nap **without nap

Shop all the pattern brands you love @

Simplicity[®].com

Simplicity®

Thank you for purchasing this Simplicity pattern. We made every effort to provide you with a high quality product.

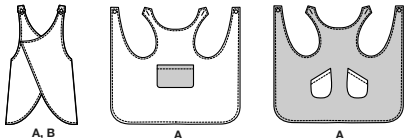


A

A

B

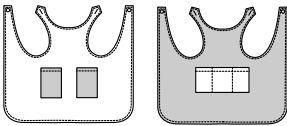
B



A, B

A

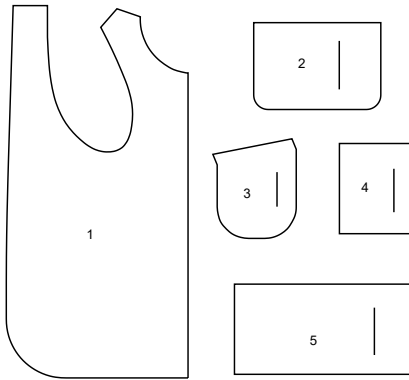
A



B

B

5 PIECES



- 1 FRONT AND BACK - A,B
- 2 POCKET - A
- 3 POCKET - A
- 4 POCKET - B
- 5 POCKET - B

General Directions

The Pattern

- SYMBOLS**
- GRAIN LINE Place on straight grain of fabric parallel to selvage
 - PLACE SOLID LINE on fold of fabric.
 - CENTER FRONT OR BACK of garment.
 - NOTCHES
 - DOTS
 - CUTTING LINE
 - LENGTHEN OR SHORTEN LINES

SEAM ALLOWANCE: 5/8" (1.5cm) unless otherwise stated is included but not printed on MULTI-SIZE PATTERNS. Mark your size with colored felt tip pen. See chart on tissue for how to use MULTI-SIZE PATTERNS.

ADJUST IF NEEDED
Make adjustments before placing pattern on fabric.

TO LENGTHEN:
Cut pattern between lengthen or shorten lines. Spread pattern evenly, the amount needed and tape to paper.

TO SHORTEN:
At lengthen or shorten lines, make an even pleat taking up amount needed. Tape in place.

When lengthen or shorten lines are not given, make adjustments at lower edge of pattern.

Cutting/Marking

BEFORE CUTTING:
PRESS pattern pieces with a warm dry iron. PRE-SHRINK fabric by pre-washing washables or steam-pressing non-washables.

CIRCLE your cutting layout.

PIN pattern to fabric as shown in Cutting Layouts.

• FOR DOUBLE THICKNESS: Fold fabric with RIGHT sides together.

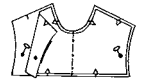
• FOR SINGLE THICKNESS: Place fabric RIGHT side up.

• FOR PILE, SHADED OR ONE WAY DESIGN FABRICS: Use "with nap" layouts

AFTER CUTTING:
Transfer markings to WRONG side of fabric before removing pattern. Use pin and chalk method or dressmaker's tracing paper and wheel.

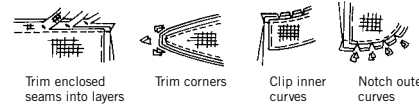
To Quick Mark:

- Snip edge of fabric to mark notches, ends of fold lines and center lines.
- Pin mark dots.



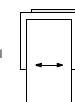
Sewing

- SEW garment following **Sewing Directions**.
- PIN or machine-baste seams matching notches.
- STITCH 5/8" (1.5 cm) seams unless otherwise stated.
- PRESS seams open unless otherwise indicated clipping when necessary so seams will lie flat.
- TRIM seams to reduce bulk, as shown below.



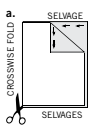
SPECIAL CUTTING NOTES

★ If layout shows a piece extending past fold, cut out all pieces except piece that extends.

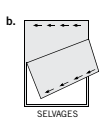


Open out fabric to single thickness. Cut extending piece on RIGHT side of fabric in position shown.

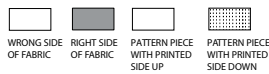
✳ Mark small arrows along both selvages indicating direction of nap or design. Fold fabric crosswise with RIGHT sides together, and cut along fold (a).



Turn one fabric layer around so arrows on both layers go in the same direction. Place RIGHT sides together (b).



Cutting Layouts



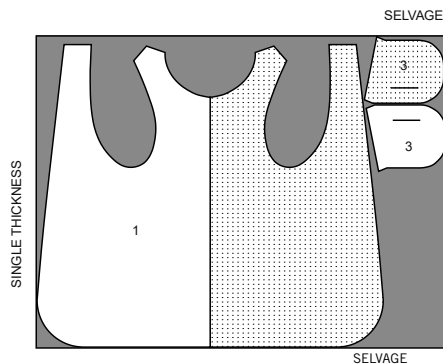
POSITION OF PATTERN PIECES MAY VARY SLIGHTLY ACCORDING TO YOUR PATTERN SIZE

MISSES'

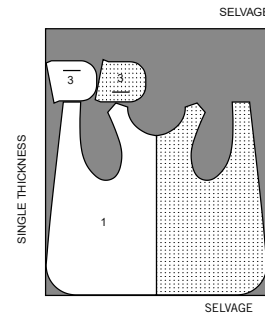
APRON A CUT CROSSWISE - (INCLUDES POCKETS)

USE PIECES 1 3

45" (115CM) WITH NAP ALL SIZES



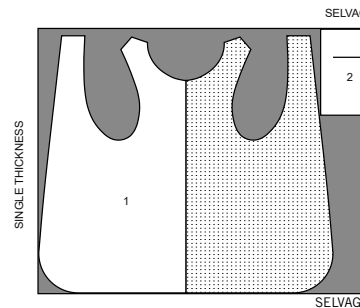
60" (150CM) WITH NAP ALL SIZES



CONTRAST APRON - CUT CROSSWISE (POCKETS)

USE PIECES 1 2

45" (115CM) WITH NAP ALL SIZES

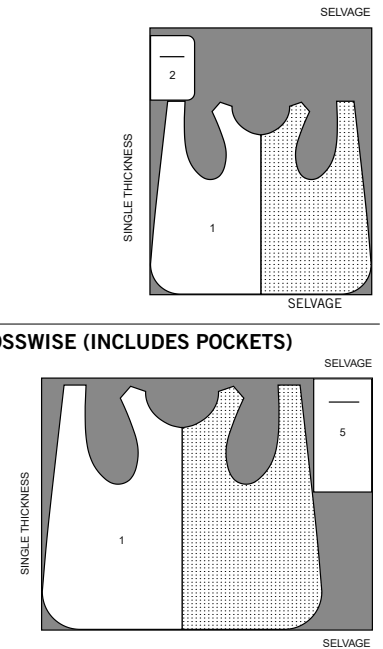


60" (150CM) WITH NAP ALL SIZES

APRON B- CUT CROSSWISE (INCLUDES POCKETS)

USE PIECES 1 5

45" OR 60" (115CM OR 150CM) WITH NAP ALL SIZES

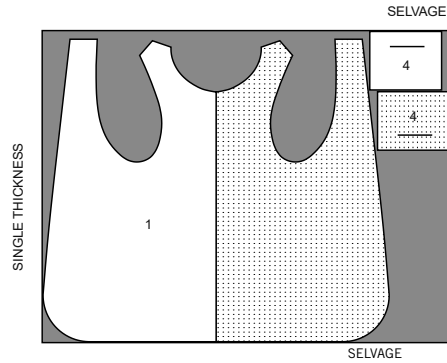


CUTTING LAYOUTS CONTINUED ON PAGE 2

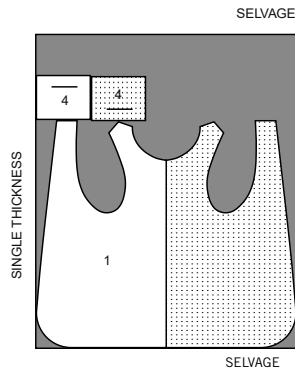
CONTRAST APRON - CUT CROSSWISE (POCKETS)

USE PIECES 1 4

45" (115CM)
WITH NAP
ALL SIZES



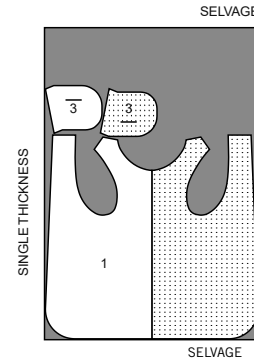
60" (150CM)
WITH NAP
ALL SIZES



CHILDREN'S APRON A - CUT CROSSWISE (INCLUDES POCKETS)

USE PIECES 1 3

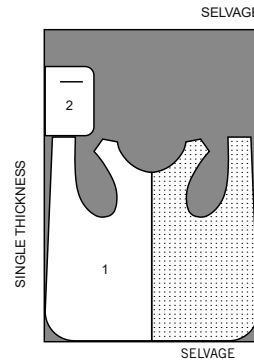
45" OR 60" (115CM OR 150CM)
WITH NAP
ALL SIZES



CONTRAST APRON - CUT CROSSWISE (POCKETS)

USE PIECES 1 2

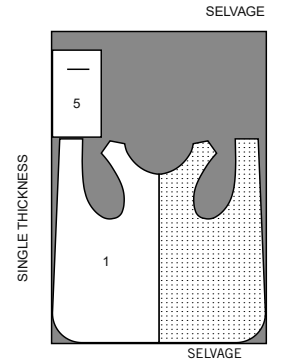
45" OR 60" (115CM OR 150CM)
WITH NAP
ALL SIZES



APRON B CUT CROSSWISE (INCLUDES POCKETS)

USE PIECES 1 5

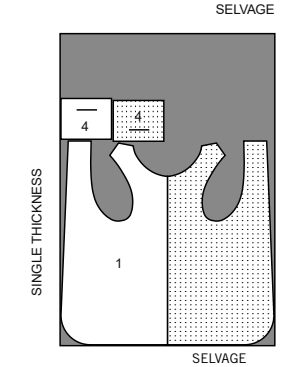
45" OR 60" (115CM OR 150CM)
WITH NAP
ALL SIZES



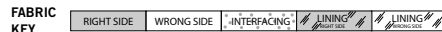
CONTRAST APRON - CUT CROSSWISE (POCKETS)

USE PIECES 1 4

45" OR 60" (115CM OR 150CM)
WITH NAP
ALL SIZES



Sewing Directions



Read **General Directions** on page 1 before you begin.

Sewing methods in **BOLD TYPE** have Sewing Tutorial Video available. Scan QR CODE to watch videos:

SLIPSTITCH – see Hand Stitching: “how to slip stitch” video.

STAYSTITCH – see Machine Stitches: “how to do stay stitching” video.

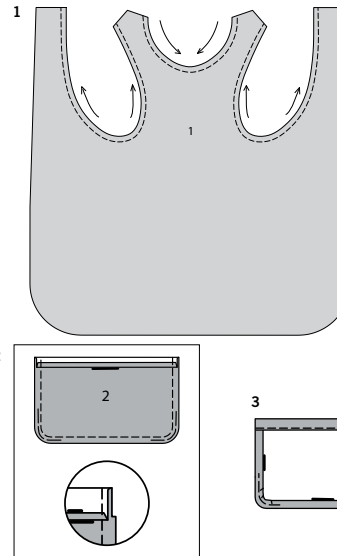
TOPSTITCH – see Machine Stitches: “how to topstitch” video.

TRIM SEAM – see Seams: “how to trim, clip and layer seams” video.

SEWING TUTORIALS



Build your skills viewing short, easy-to-follow videos at simplicity.com/sewingtutorials



PATTERN PIECES WILL BE IDENTIFIED BY NUMBERS THE FIRST TIME THEY ARE USED.

STITCH 5/8" (1.5CM) SEAMS WITH RIGHT SIDES TOGETHER UNLESS OTHERWISE STATED.

APRON A, B

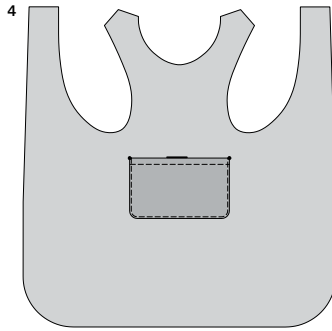
1. To **STAYSTITCH** neck and armhole edges of **FRONT AND BACK** (1) fabric and contrast sections, stitch 1/2" (1.3cm) from cut edge in direction of arrows. This stitching stays in permanently to prevent stretching on curved edges. (Shown only in the first illustration.)

POCKETS A

2. Press under 1/4" (6mm) on upper edge of **POCKET** (2). Turn upper edge to **OUTSIDE** along fold line, forming facing. Stitch along seam line on raw edges. To ease curved edge of pocket, stitch 1/4" (6mm) **INSIDE** the seam line, using a long machine-stitch. Trim seam allowance in the facing area to 1/4" (6mm).
3. Turn corners **RIGHT** side out, turning facing to the **WRONG** side; press, pressing under raw edges along stitching. Pull up ease stitches to shape the curve. To eliminate bulk, notch out the fullness in the seam allowance along the curves as far as the ease stitches. Stitch facing close to inner edge.

S9969

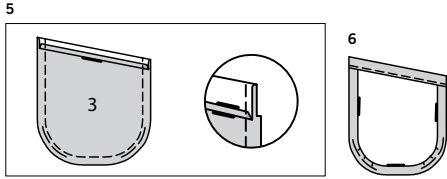
3 of 3



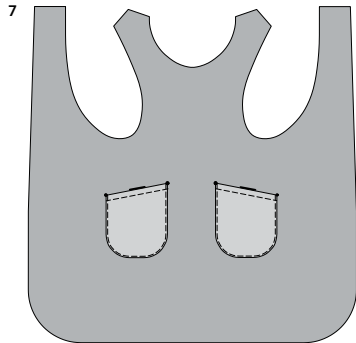
4. On **OUTSIDE**, pin pocket to fabric front, matching large dots. Stitch close to side and lower edges.

OBVERSE POCKET A

5. Press under 1/4" (6mm) on upper edge of **POCKET (3)** sections. Turn upper edge to **OUTSIDE** along fold line, forming facing. Stitch along seam line on raw edges. To ease curved edge of pocket, stitch 1/4" (6mm) **INSIDE** the seam line, using a long machine-stitch. Trim seam allowance in the facing area to 1/4" (6mm).



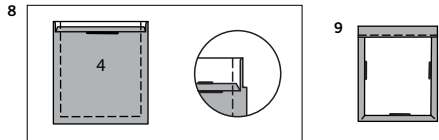
6. Turn corners **RIGHT** side out, turning facing to the **WRONG** side; press, pressing under raw edges along stitching. Pull up ease stitches to shape the curve. To eliminate bulk, notch out the fullness in the seam allowance along the curves as far as the ease stitches. Stitch facing close to inner edge.



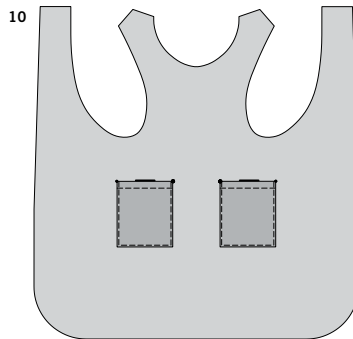
7. On **OUTSIDE**, pin pockets to contrast front, matching small and large dots. Stitch close to side and lower edges.

POCKET B

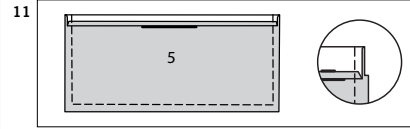
8. Press under 1/4" (6mm) on upper edge of **POCKET (4)** sections. Turn upper edge to **OUTSIDE** along fold line, forming facing. Stitch along seam line on raw edges. Trim seam allowance in the facing area to 1/4" (6mm).



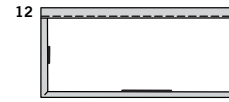
9. Turn corners **RIGHT** side out, turning facing to the **WRONG** side; press, pressing under raw edges along stitching. Stitch facing close to inner edge.



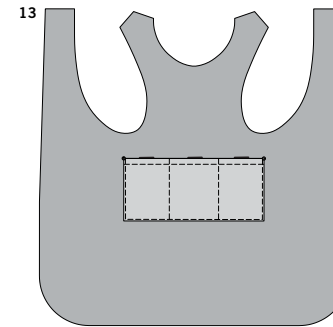
10. On **OUTSIDE**, pin pockets to fabric front, matching small and large dots. Stitch close to side and lower edges.

**OBVERSE POCKET B**

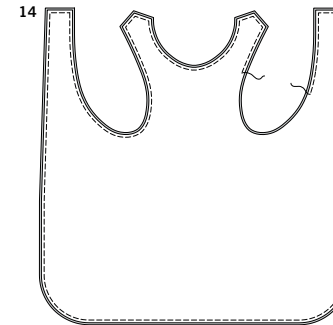
11. Press under 1/4" (6mm) on upper edge of **POCKET (5)**. Turn upper edge to **OUTSIDE** along fold line, forming facing. Stitch along seam line on raw edges. Trim seam allowance in the facing area to 1/4" (6mm).



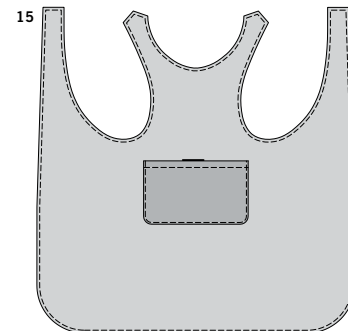
12. Turn corners **RIGHT** side out, turning facing to the **WRONG** side; press, pressing under raw edges along stitching and folding out fullness at corners. Stitch facing close to inner edge.



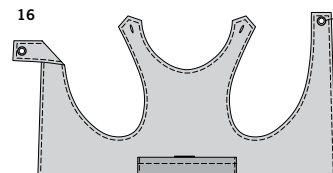
13. On **OUTSIDE**, pin pocket to contrast front, matching large dots. Stitch close to side and lower edges. Stitch along stitching lines.

CONTINUE AS FOLLOWS FOR BOTH VIEWS

14. With **RIGHT** sides together and raw edges even, pin front and back of fabric to front and back of contrast. Stitch, leaving an opening in underarm edge for turning. **TRIM SEAM.**



15. Turn apron; press. **SLIPSTITCH** opening edges together. **TOPSTITCH** 1/4" (6mm) from finished edges.



16. Make buttonholes at markings. Sew buttons to both sides of remaining ends at small dots.



Congrats!

You've completed your sewing adventure

**SHARE
YOUR** LOOK



Post your pattern and tag us
@simplicity_creative_group and **#simplicitypatterns**
for a chance to be featured on our social media.

Look for more PDF patterns at [simplicity.com](https://www.simplicity.com)

Have a question or need help with your sewing project call us at
1-888-588-2700



Simplicity ©2024 a division of IG Design Group Americas Inc. • Atlanta, GA 30342 USA www.thedesigngroup.com • All Rights Reserved. www.simplicity.com • Made in the U.S.A. Fabriqué aux États-Unis.

To be used for individual private home use only and not for commercial or manufacturing purposes. • A usage privé seulement et non à des fins commerciales ou de production en série. • Para uso privado solamente, no se puede utilizar con propósitos de comercialización o de producción en serie.