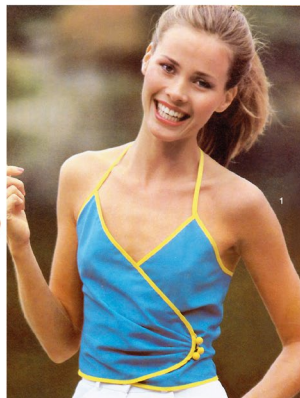


S9966

Simplicity®

1980s Vintage

ONE-YARD TOPS
Each top takes 1 yard
or less of 60" fabric.



Designed and
printed in USA

Very Easy

MISSES' TOPS

Suggested Fabrics: Broadcloth, Cotton Types, Crepe and Crepe Types, Silk Types.

Notions: **View 1:** Two pkgs. of ¼" (6mm) double-fold bias tape, three ½" (1.3cm) ball buttons. **View 2:** One pkg. of ¼" (6mm) double-fold bias tape, four ½" (1.3cm) buttons. **View 3:** One pkg. of ¼" (6mm) double-fold bias tape, one pkg. of ½" (1.3cm) single-fold bias tape, 2½ yds. (2.2m) of ¼" (6mm) elastic.

Sizes	6	8	10	12	14	16
European	32	34	36	38	40	42

BODY MEASUREMENTS: Select pattern size based on body measurements

Bust	30½	31½	32½	34	36	38	Ins.
Waist	23	24	25	26½	28	30	"
Hip-9" below waist	32½	33½	34½	36	38	40	"
Back-neck to waist	15½	15¾	16	16¾	16½	16¾	"

View 1 Top	45**	½	¾	¾	¾	¾	Yd.
View 2 Top	45**	½	¾	¾	¾	¾	Yd.
View 3 Top	45**	¾	¾	¾	¾	¾	Yd.

FINISHED GARMENT MEASUREMENTS (Includes Design and Wearing Ease)

View 1 Bust	32½	33½	34½	36	38	40	Ins.
View 2 Bust	31	32	33	34½	36½	38½	"
View 3 Bust	41¾	42¾	43¾	45¼	47¼	49¼	"

*with nap **without nap

Très Facile

HAUTS POUR JEUNES FEMMES

Tissus Conseillés: Broadcloth, Cotonnades, Crêpe et Types crêpe, Types soie.

Mercerie: **Modèle 1:** 2 paquets de ruban de biais double de 6mm, 3 boutons à tige de 1.3cm. **Modèle 2:** 1 paquet de ruban de biais double de 6mm, 4 boutons de 1.3cm. **Modèle 3:** 1 paquet de ruban de biais double de 6mm, 1 paquet de ruban de biais simple de 1.3cm, 2.2m d'élastique de 6mm.

Tailles	6	8	10	12	14	16
Françaises	34	36	38	40	42	44
Européen	32	34	36	38	40	42

MESURES DU CORPS: Choisissez la taille du patron basée sur les mesures du corps

Poitrine	78	80	83	87	92	97	cm
Taille	58	61	64	67	71	76	"

Hanches (23cm au-dessous de la taille)

	83	85	88	92	97	102	cm
Dos du cou à la taille	39	40	41	41	42	43	"

Modèle 1 Haut	115cm*	0.5	0.6	0.6	0.6	0.6	m
---------------	--------	-----	-----	-----	-----	-----	---

Modèle 2 Haut	115cm*	0.3	0.6	0.6	0.6	0.6	m
---------------	--------	-----	-----	-----	-----	-----	---

Modèle 3 Haut	115cm*	0.8	0.8	0.8	0.8	0.8	m
---------------	--------	-----	-----	-----	-----	-----	---

MESURES DES VÊTEMENTS FINI (Motif et aisance de port compris)

Modèle 1 Poitrine	83	85	88	91	97	102	cm
Modèle 2 Poitrine	79	81	84	88	93	98	"
Modèle 3 Poitrine	106	109	111	115	120	125	"

*avec sens **sans sens



1



2



3

Simplicity 9438



Pattern pieces

8 pieces given
V. 1 - A B C
V. 2 - D E
V. 3 - F G H

TOP VIEW 1



TOP VIEW 2



TOP VIEW 3



H ELASTIC GUIDE

Preparation

A • PREPARE THE PATTERN
Press pattern pieces.
Don't trim margins.
If necessary alter pattern.

TO LENGTHEN
Cut pattern between printed lines.
Place on paper, spread pattern amount needed; then pin.

TO SHORTEN
At printed line, pin a pleat half the amount to be shortened.

B • PATTERN MARKINGS

STRAIGHT GRAIN
Place on fabric an even distance from selvage.

FOLD GRAIN
Place on fold of fabric.

CUTTING LINE

LENGTHEN OR SHORTEN LINES

STITCHING LINES

NOTCHES

SEAM ALLOWANCE
usually $\frac{5}{8}$ " (1.5cm)

DOTS—Small • medium ●

C • FABRIC AND CUTTING LAYOUTS
Press fabric. Always check washing or cleaning directions with fabric. If necessary, shrink fabric before cutting. Place pattern pieces on fabric as shown in cutting layouts.

FOR DOUBLE THICKNESS
Fold fabric with **RIGHT** side **INSIDE**. Place pattern on **WRONG** side of fabric.

FOR SINGLE THICKNESS
Place pattern on **RIGHT** side of fabric.

FOR NAP OR ONE-WAY DESIGN FABRICS
Use "with nap" cutting layout.

BEFORE CUTTING
Pin all pattern pieces on fabric as in cutting layout. Cut pattern and fabric on cutting lines.
The metric equivalent is in parenthesis.

D • MARK AND SEW

Keep pattern pinned to fabric. Transfer markings. Un-pin pattern and read each piece as you sew.

STAY-STITCHING
Machine-stitch thru single thickness of fabric to prevent stretching of bias or curved edges... done on seam line or $\frac{1}{4}$ " (3mm) from seam line in seam allowance. Stay-stitching is shown only in the first illustration.

Pin, hand or machine baste seams... match same numbered notches... stitch $\frac{5}{8}$ " seams (1.5cm) unless otherwise stated... press seams open unless otherwise stated.

SEE SIMPLICITY SEWING BOOK FOR MORE DETAILS.

Cutting

*GENERAL NOTE: When pattern pieces extend beyond fold of fabric, cut out all pieces except pieces that extend; then open out fabric and on single thickness, cut extending pieces on right side of fabric in position shown.

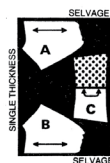
KEY: ■ black is fabric. □ white is pattern printed side up.
▨ grey is pattern printed side down. ▤ solid outline is fabric cut without a pattern piece.

NOTE: For smaller sizes, pieces interlock more closely.

V1

TOP

35" 36" (90cm) fabric without nap
all sizes



44" 45" (115cm) fabric without nap
sizes 6, 8, 10, 12



44" 45" (115cm) fabric without nap
sizes 14, 16



V2

TOP

35" 36" (90cm) fabric without nap
all sizes



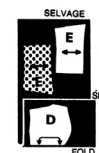
44" 45" (115cm) fabric without nap
sizes 6, 8, 10



44" 45" (115cm) fabric without nap
size 12



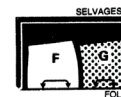
44" 45" (115cm) fabric without nap
sizes 14, 16



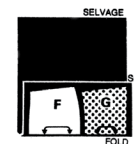
V3

TOP

35" 36" (90cm) fabric
with or without nap
all sizes



44" 45" (115cm) fabric
with or without nap
all sizes

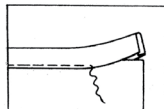


Sewing 9438 Directions

Shaded area is right side of fabric.

GENERAL DIRECTIONS FOR BIAS FOLD TAPE

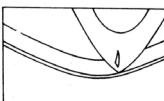
The tape comes prefolded, with one side slightly wider than the other. The wider side is to be used on the **WRONG** side of the garment so that when the tape is stitched in place from the **RIGHT** side, both edges are sure to be caught in the stitching.



If tape is applied to a curved surface, first preshape it with a steam iron.



For an inward curve, stretch the double edges and press; for an outward curve, stretch the fold edge and press.

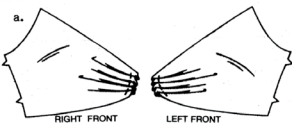


V1

TOP

UNIT 1

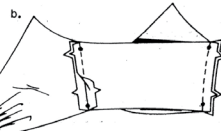
front, back and side seams



a—To make soft pleats in **RIGHT** and **LEFT** front sections, on **OUTSIDE**, fold along solid lines. Bring folds to broken lines.

Baste close to front edge.

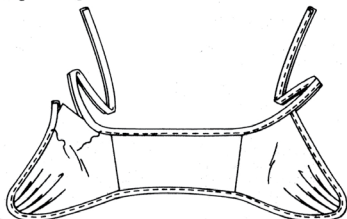
b—With **RIGHT** sides together, pin front to back at side seams matching small dots, having raw edges even.



Stitch, stretching front to fit between notches.

UNIT 2

finishing outer edges



Encase lower and front edges in bias fold tape, as indicated in General Directions.

Encase back and armhole edges in bias fold tape, as indicated in General Directions, having ends extend evenly for ties, turning under ends of ties.

Continue stitching close to edge of ties, as shown.

UNIT 3

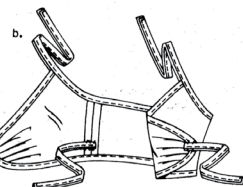
finishing

a—For **INSIDE** ties, cut a piece of bias fold tape 14" (35.5cm) long.

Turn in ¼" (6mm) on ends of ties.

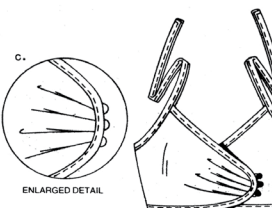
Stitch close to long edge and turned ends, as shown.

Cut tie in half.



b—On **INSIDE**, stitch one tie to **RIGHT** side seam, centering it over small dot, as shown.

Sew remaining tie to **LEFT** front edge between upper pleats, as shown.



c—Starting ½" (1.3cm) above first pleat at upper edge of **RIGHT** front, make three thread loops to fit buttons, spacing them evenly, as shown.

Sew buttons to **LEFT** front at small dots, reinforcing underside with seam binding.

V2

TOP

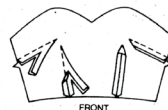
UNIT 1

front

Make darts.

Trim darts.

Press underarm darts down, press remaining darts open.



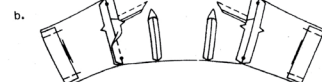
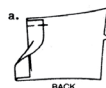
UNIT 2

back and side seams

a—Press back edge of back sections to **INSIDE** along outer fold line.

Press back edge to **INSIDE** again along remaining fold line.

Baste close to upper and lower edges.



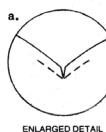
b—Stitch front to back at side seams, matching small dots.

UNIT 3

finishing upper and lower edges

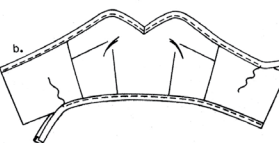
a—Machine-stitch a scant ¼" (6mm) from upper edge of front for about 1" (2.5cm) each side of center front.

Clip to stitching, as shown.



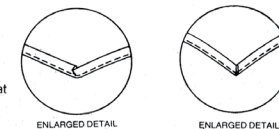
Printed in U.S.A. Printed in New Zealand Printed in Great Britain

b—Spreading clip, encase upper edge in bias fold tape, turning under ends at back opening edges.



Make a small pleat at center front and stitch, as shown.

Encase lower edge in bias fold tape, as indicated in General Directions, turning under ends at back opening edges.



UNIT 4

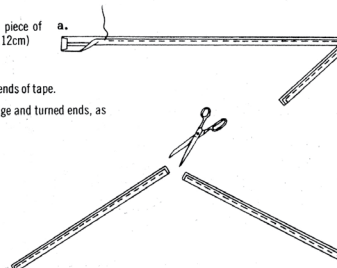
tie ends

a—For tie ends, cut a piece of bias fold tape 44" (112cm) long.

Turn in ¼" (6mm) on ends of tape.

Stitch close to long edge and turned ends, as shown.

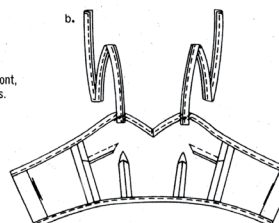
Cut tie end in half.



b—On **INSIDE**, pin tie end to front, centering them over small dots.

Hand-sew tie ends securely.

Tie ends at back neck, as shown on front of envelope.



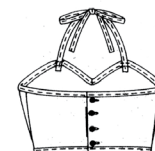
UNIT 5

finishing

Make worked or machine buttonholes in **RIGHT** back.

Lap **RIGHT** back over **LEFT**, matching centers.

Sew buttons under buttonholes.



V3

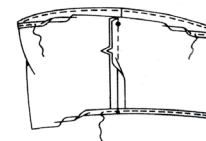
TOP UNIT 1

front, back and side seams

Stitch front to back at side seams, matching small dots.

Narrowly hem upper and lower edges of top as follows:

Machine-stitch ⅜" (1cm) from raw edge. Turn raw edge to **INSIDE** so it just meets stitching; press. Turn pressed edge to **INSIDE** again along stitching; press. On **OUTSIDE**, top-stitch ¼" (3mm) from finished edge, catching in hem.

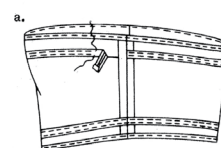


UNIT 2

casings and elastic

a—To form casing, on **INSIDE**, pin ½" (1.3cm) bias fold tape along casing lines in front and back, turning under and having ends meet at one side seam.

Stitch close to both edges of all casings.



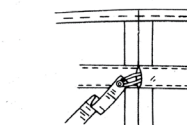
b—For upper casing, cut a piece of elastic the length of guide H.

For lower casing, cut a piece of elastic the person's waist measurement, plus 1" (2.5cm).

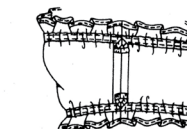
Attach a safety pin to one end of elastic.



Insert pin through opening in casings.



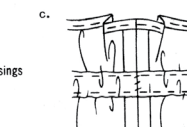
Adjust lower elastic to fit.



Sew ends of elastic together securely.



c—Slip-stitch turned ends of casings together.



UNIT 3

shoulder ties

a—For shoulder ties, cut four pieces of bias fold tape, each 20" (51cm) long. Turn in ¼" (6mm) on ends of tape.

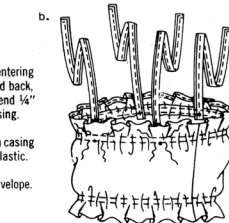
Stitch close to long edge and turned ends, as shown.



b—On **INSIDE**, pin ties to top, centering them over small dots in front and back, having one end of each tie extend ¼" (6mm) below lower edge of casing.

Stitch in place along stitching on casing being careful not to catch in elastic.

Tie bows, as shown on front of envelope.

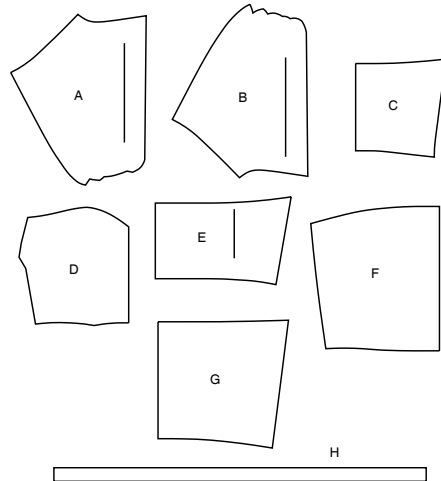


Simplicity®

Thank you for purchasing this Simplicity pattern.
We made every effort to provide you with a high quality product.

SUPPLEMENTAL CUTTING LAYOUTS

8 PIECES



A RIGHT FRONT - VIEW 1
B LEFT FRONT - VIEW 1
C BACK - VIEW 1
D FRONT - VIEW 2
E BACK - VIEW 2
F FRONT - VIEW 3
G BACK - VIEW 3
H ELASTIC GUIDE - VIEW 3



www.simplicity.com



info@simplicity.com



1-888-588-2700

General Directions

The Pattern



SYMBOLS
GRAIN LINE Place on straight grain of fabric parallel to selvage



PLACE SOLID LINE on fold of fabric.



CENTER FRONT OR BACK of garment.



NOTCHES



DOTS



CUTTING LINE



LENGTHEN OR SHORTEN LINES

SEAM ALLOWANCE: 5/8" (1.5cm) unless otherwise stated is included but not printed on MULTI-SIZE PATTERNS. Mark your size with colored felt tip pen. See chart on tissue for how to use MULTI-SIZE PATTERNS.

ADJUST IF NEEDED

Make adjustments before placing pattern on fabric.

TO LENGTHEN:
Cut pattern between lengthen or shorten lines. Spread pattern evenly, the amount needed and tape to paper.

TO SHORTEN:
At lengthen or shorten lines, make an even pleat taking up amount needed. Tape in place.

When lengthen or shorten lines are not given, make adjustments at lower edge of pattern.

Cutting/Marking

BEFORE CUTTING:

PRESS pattern pieces with a warm dry iron. PRE-SHRINK fabric by pre-washing washables or steam-pressing non-washables.

CIRCLE your cutting layout.

PIN pattern to fabric as shown in Cutting Layouts.

• FOR DOUBLE THICKNESS: Fold fabric with RIGHT sides together.

• FOR SINGLE THICKNESS: Place fabric RIGHT side up.

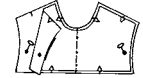
• FOR PILE, SHADED OR ONE WAY DESIGN FABRICS: Use "with nap" layouts

AFTER CUTTING:

Transfer markings to WRONG side of fabric before removing pattern. Use pin and chalk method or dressmaker's tracing paper and wheel.

To Quick Mark:

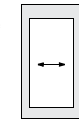
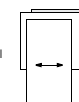
- Snip edge of fabric to mark notches, ends of fold lines and center lines.
- Pin mark dots.



SPECIAL CUTTING NOTES

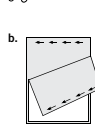
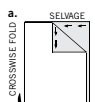
★ If layout shows a piece extending past fold, cut out all pieces except piece that extends.

Open out fabric to single thickness. Cut extending piece on RIGHT side of fabric in position shown.

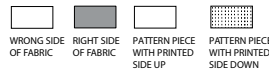


✱ Mark small arrows along both selvages indicating direction of nap or design. Fold fabric crosswise with RIGHT sides together, and cut along fold (a).

Turn one fabric layer around so arrows on both layers go in the same direction. Place RIGHT sides together (b).



Cutting Layouts

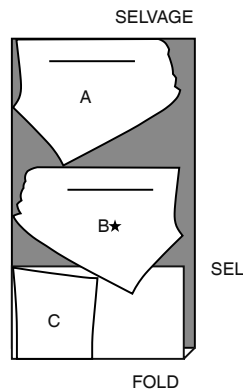


POSITION OF PATTERN PIECES MAY VARY SLIGHTLY ACCORDING TO YOUR PATTERN SIZE

VIEW 1 TOP

USE PIECES A B C

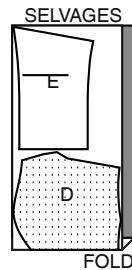
45" (115CM)
WITH NAP
ALL SIZES



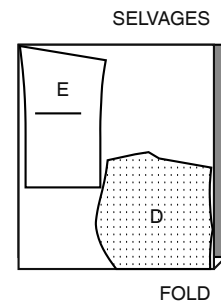
VIEW 2 TOP

USE PIECES D E

45" (115CM)
WITH NAP
SIZE 6



45" (115CM)
WITH NAP
SIZES 8 10 12 14 16

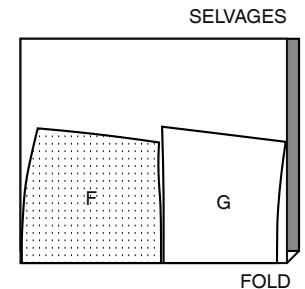


VIEW 3 TOP

USE PIECES F G

PIECE H IS CUT OF ELASTIC

45" (115CM)
WITH NAP
ALL SIZES





Congrats!

You've completed your sewing adventure

SHARE YOUR LOOK



Post your pattern and tag us
@simplicity_creative_group and **#simplicitypatterns**
for a chance to be featured on our social media.

Look for more PDF patterns at [simplicity.com](https://www.simplicity.com)

Have a question or need help with your sewing project call us at
1-888-588-2700



Simplicity ©2024 a division of IG Design Group Americas Inc. • Atlanta, GA 30342 USA www.thedesigngroup.com • All Rights Reserved. www.simplicity.com • Made in the U.S.A. Fabriqué aux États-Unis.

To be used for individual private home use only and not for commercial or manufacturing purposes. • A usage privé seulement et non à des fins commerciales ou de production en série. • Para uso privado solamente, no se puede utilizar con propósitos de comercialización o de producción en serie.