

S9964

Simplicity®



Designed and printed in USA.



GIRLS' DRESS WITH BACK BODICE AND LENGTH VARIATIONS

Suggested Fabrics: Batiks, Calico, Chambray, Cotton Blends, Gingham, Linen Blends, Pique, Poplin, Sateen. **Lining:** Cotton Blends, Polyester Blends. **Interfacing:** Lightweight Fusible.

Notions: A,B: One pkg. of ½" (1.3cm) single fold bias tape, ¾" (1cm) elastic: 1¾ yds. (1.6m) for A, 1¾ yds. (1.3m) for B. **Also for B:** One 12" (30cm) invisible zipper.

Sizes	7	8	10	12	14	
BODY MEASUREMENTS: Select pattern size based on body measurements						
Chest	26	27	28½	30	32	Ins.
Waist	23	23½	24½	25½	26½	"
Hip	27	28	30	32	34	"
Back-neck to waist	11½	12	12¾	13½	14¼	"
Height	50	52	56	58½	61	"
Dress A	45**	2%	2%	3%	3%	Yds.
	60**	2	2½	2½	2½	"
Lining	45*** - ¾ yd.					
Interfacing	20" - ¾ yd.					
Dress B	45**	2%	2%	3	3%	Yds.
	60**	2%	2%	2½	2½	"
Lining	45*** - ¾ yd.					
Interfacing	20" - ¾ yd.					
FINISHED GARMENT MEASUREMENTS (Includes Design and Wearing Ease)						
A,B Chest	27½	28½	30	31½	33½	Ins.
Width, lower edge						
Dress A	66½	67½	69	70½	72½	Ins.
Dress B	69½	70½	72	73½	75½	"
Finished back length from base of neck						
Dress A	26	27	29	31	33	Ins.
Dress B	31	32	34	36	38	"

*with nap **without nap

Average

Moins Facile

ROBE AVEC VARIATIONS DE CORSAGE DOS ET DE LONGUEURS POUR FILLETES

Tissus Conseillés: Batiks, Calicot, Chambray, Cotonnades, Vichy, Toile de lin mélangés, Piqué, Popeline, Satin de coton. **Doublure:** Cotonnades, Mélanges de polyester. **Entoilage:** Thermocollant léger.

Mercerie: A,B: 1 paquet de ruban de biais simple de 1.3cm, élastique de 1cm: 1.6m pour A, 1.3m pour B. **Aussi pour B:** 1 fermeture à glissière invisible de 30cm.

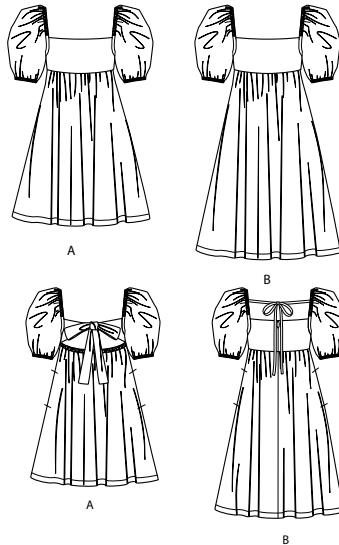
Tailles	7	8	10	12	14	
MESURES DU CORPS: Choisissez la taille du patron basée sur les mesures du corps						
Poitrine	66	68.5	72.5	76	81.5	cm
Taille	58.5	59.5	62	65	67.5	"
Hanches	68.5	71	76	81.5	86.5	"
Dos du cou à la taille	29	30.5	32.5	34.5	36	"
Hauteur	127	132	143	149	155	"
Robe A	115cm*	2.4	2.4	2.5	3.1	m
	150cm*	1.8	1.9	2.1	2.3	"
Doublure	115cm** - 0.3m					
Entoilage	51cm - 0.3m					
Robe B	115cm*	2.6	2.6	2.7	2.9	m
	150cm*	2.1	2.1	2.3	2.3	"
Doublure	115cm** - 0.3m					
Entoilage	51cm - 0.6m					
MESURES DES VÊTEMENTS FINI (Motif et aisance de port compris)						
A,B Poitrine	70	72	76	80	85	cm
Largeur à l'ourlet						
Robe A	169	171	175	179	184	cm
Robe B	177	179	183	187	192	"
Longueur finie – dos, votre nuque à l'ourlet						
Robe A	66	69	74	79	84	cm
Robe B	79	81	86	91	97	"

*avec sens **sans sens

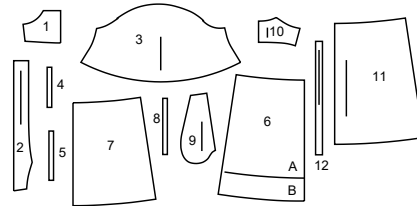


Simplicity®

Thank you for purchasing this Simplicity pattern.
We made every effort to provide you with a high quality product.



12 PIECES



- 1 Bodice Front-A,B
2 Bodice Back-A
3 Sleeve-A,B
4 Elastic Guide for Shoulder-A,B
5 Elastic Guide for Sleeve-A,B
6 Skirt Front-A,B
7 Skirt Back-A
8 Elastic Guide for Back-A
9 Pocket-A,B
10 Bodice Back-B
11 Skirt Back-B
12 Tie-B



www.simplicity.com



info@simplicity.com



1-888-588-2700

General Directions

The Pattern

- SYMBOLS**
- GRAIN LINE** Place on straight grain of fabric parallel to selvage
 - PLACE SOLID LINE** on fold of fabric.
 - CENTER FRONT OR BACK** of garment.
 - NOTCHES**
 - DOTS**
 - CUTTING LINE**
 - LENGTHEN OR SHORTEN LINES**

SEAM ALLOWANCE: 5/8" (1.5cm) unless otherwise stated is included but not printed on MULTI-SIZE PATTERNS. Mark your size with colored felt tip pen. See chart on tissue for how to use MULTI-SIZE PATTERNS.

ADJUST IF NEEDED
Make adjustments before placing pattern on fabric.

TO LENGTHEN:
Cut pattern between lengthen or shorten lines. Spread pattern evenly, the amount needed and tape to paper.

TO SHORTEN:
At lengthen or shorten lines, make an even pleat taking up amount needed. Tape in place.

When lengthen or shorten lines are not given, make adjustments at lower edge of pattern.

Cutting/Marking

BEFORE CUTTING:
PRESS pattern pieces with a warm dry iron. PRE-SHRINK fabric by pre-washing washables or steam-pressing non-washables.

CIRCLE your cutting layout.

PIN pattern to fabric as shown in Cutting Layouts.

• **FOR DOUBLE THICKNESS:** Fold fabric with RIGHT sides together.

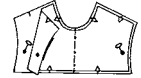
• **FOR SINGLE THICKNESS:** Place fabric RIGHT side up.

• **FOR PILE, SHADED OR ONE WAY DESIGN FABRICS:** Use "with nap" layouts

AFTER CUTTING:
Transfer markings to WRONG side of fabric before removing pattern. Use pin and chalk method or dressmaker's tracing paper and wheel.

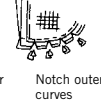
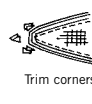
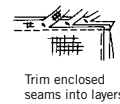
To Quick Mark:

- Snip edge of fabric to mark notches, ends of fold lines and center lines.
- Pin mark dots.



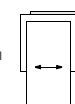
Sewing

- SEW garment following **Sewing Directions**.
- PIN or machine-baste seams matching notches.
- STITCH 5/8" (1.5 cm) seams unless otherwise stated.
- PRESS seams open unless otherwise indicated clipping when necessary so seams will lie flat.
- TRIM seams to reduce bulk, as shown below.



SPECIAL CUTTING NOTES

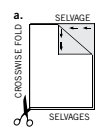
★ If layout shows a piece extending past fold, cut out all pieces except piece that extends.



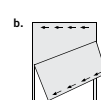
Open out fabric to single thickness. Cut extending piece on RIGHT side of fabric in position shown.



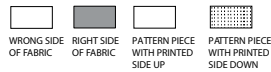
✱ Mark small arrows along both selvages indicating direction of nap or design. Fold fabric crosswise with RIGHT sides together, and cut along fold (a).



Turn one fabric layer around so arrows on both layers go in the same direction. Place RIGHT sides together (b).



Cutting Layouts

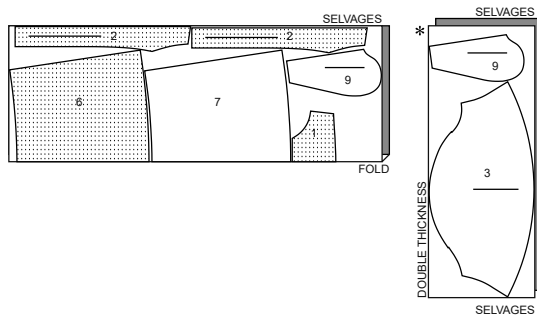


POSITION OF PATTERN PIECES MAY VARY SLIGHTLY ACCORDING TO YOUR PATTERN SIZE

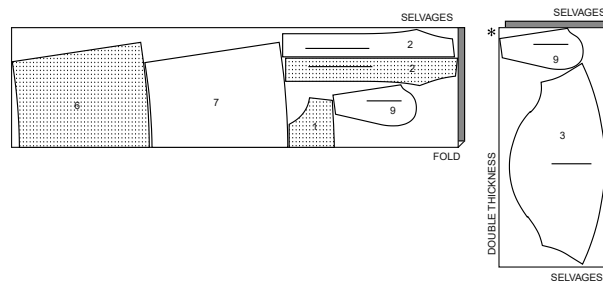
DRESS A

USE PIECES 1 2 3 6 7 9

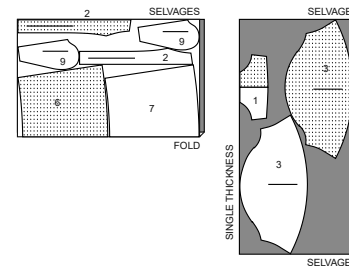
45" (115CM)
WITH NAP
SIZES 7-8-10



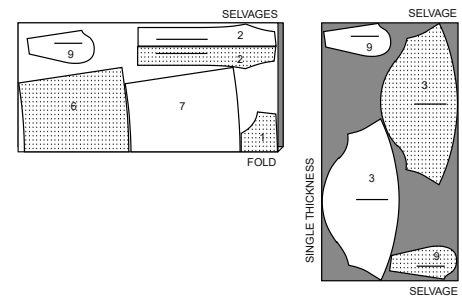
45" (115CM)
WITH NAP
SIZES 12-14



60" (150CM)
WITH NAP
SIZES 7-8-10

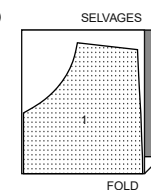


60" (150CM)
WITH NAP
SIZES 12-14



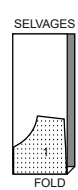
INTERFACING A USE PIECE 1

20" (51CM)
ALL SIZES



LINING A USE PIECE 1

45" (115CM)
WITHOUT NAP
ALL SIZES

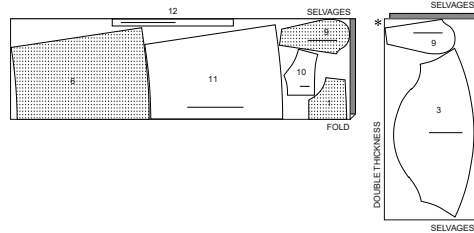
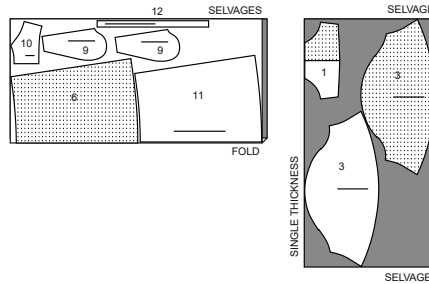


S9964

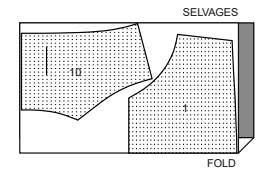
2 of 4

DRESS B

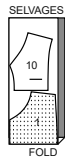
USE PIECES 1 3 6 9 10 11 12

45" (115CM)
WITH NAP
ALL SIZES60" (150CM)
WITH NAP
ALL SIZES**INTERFACING B**

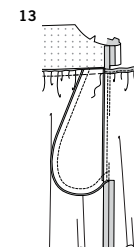
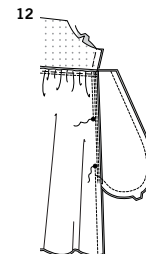
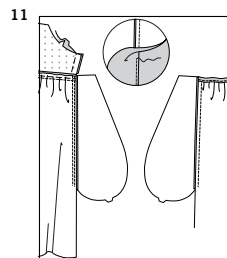
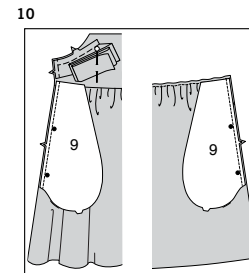
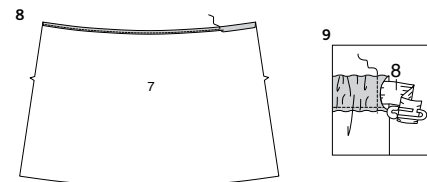
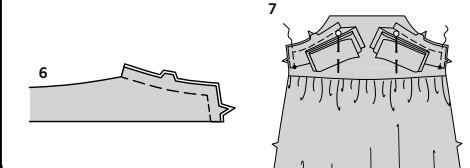
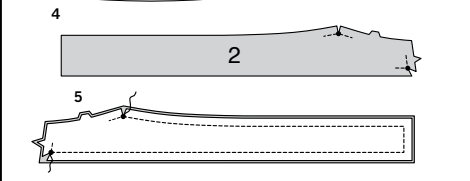
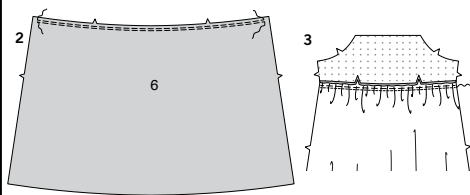
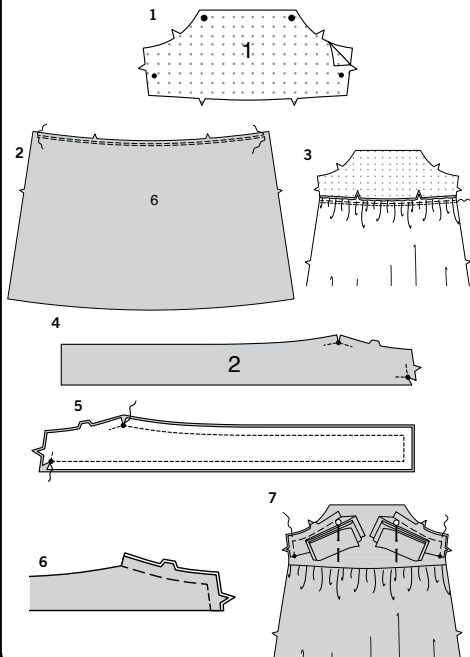
USE PIECES 1 10

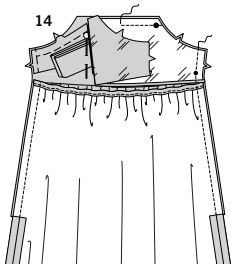
20" (51CM)
ALL SIZES**LINING B**

USE PIECES 1 10

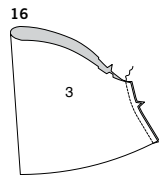
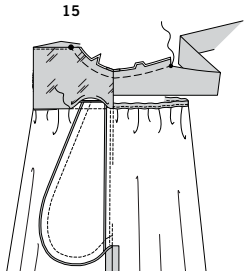
45" (115CM)
WITHOUT NAP
ALL SIZES**Sewing Directions****FABRIC**

KEY RIGHT SIDE WRONG SIDE INTERFACING LINING LINING

Read **General Directions** on page 1 before you begin.**EDGE STITCH** – see **Machine Stitches: "how to sew an edgestitch"** video**GATHER** – see **Gathering "sewing two row gathers"** video**INVISIBLE ZIPPER** – see **Zippers: "sewing an invisible zipper"** video**SLIPSTITCH** – see **Hand Stitching: "how to slip stitch"** video**STITCH IN THE DITCH** – see **Machine Stitches: "how to stitch in the ditch"** video**TRIM SEAM** – see **Seams: "how to trim, clip and layer seams"** video**UNDERSTITCH** – see **Machine Stitches: "how to understitch"** video**PATTERN PIECES WILL BE IDENTIFIED BY NUMBERS THE FIRST TIME THEY ARE USED.****STITCH 5/8" (1.5CM) SEAMS WITH RIGHT SIDES TOGETHER UNLESS OTHERWISE STATED.****DRESS A****1.** Pin interfacing to **WRONG** side of **BODICE FRONT (1)**. Fuse interfacing in place following manufacturer's directions.**2.** To **GATHER** upper edge of **SKIRT FRONT (6)** between side seam lines, stitch 5/8" (1.5cm) from cut edge using a long stitch. Stitch again 1/4" (6mm) from first stitching within the seam allowance.**3.** With right sides together and raw edges even, pin lower edge of **BODICE FRONT (1)** to upper edge of skirt front, matching notches, pulling up gathering stitches to fit. Baste; stitch. Press seam toward bodice.**4.** To reinforce upper edge of **BODICE BACK (2)** sections at small dot, stitch along seam line for about 1" (2.5cm) each side of small dot, stitching through dots, as shown. Clip to stitching at dots.**5.** With **RIGHT** sides together and raw edges even, pin bodice back sections to bodice back facing sections. Stitch unnotched edges. **TRIM SEAM.****6.** Turn bodice back sections. Press. Baste raw edges together.**7.** On **OUTSIDE**, pin bodice back sections to bodice front at side edges, matching small dots and notches. Baste. Roll bodice back up and pin to bodice front away from all seamlines.**8.** To make casing for elastic, press upper edge of **SKIRT BACK (7)** to **INSIDE** along foldline for casing. Turn under raw edge 1/4" (6mm). Press. **EDGE STITCH** close to inner pressed edge.**9.** Cut a piece of elastic the length of the **ELASTIC GUIDE FOR BACK (8)**. Transfer markings. Attach a safety pin to one end and thread through casing. Stitch along seamlines, holding elastic securely.**10.** With **RIGHT** sides together, pin **POCKET (9)** to skirt front and skirt back sections, matching large dots, having raw edges even. Stitch in 3/8" (1cm) seam.**11.** **UNDERSTITCH** the front pocket. Press seams toward pockets, pressing pockets out.**12.** Pin skirt front to skirt back at side seams, matching large dots. Stitch side seams, leaving an opening between large dots. Stitch pocket edges together from side seam to upper edge.**13.** Clip skirt back seam allowance below pocket. Press seam open below clip. Press pocket toward front. Baste upper edge of pocket to front, having raw edges even.**SEWING TUTORIALS**Build your skills viewing short, easy-to-follow videos at
simplicity.com/sewingtutorials

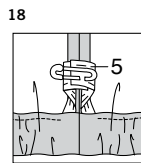
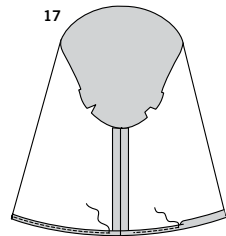


- 14.** Press up lower edge of bodice front lining 5/8" (1.5cm). Trim to 1/4" (6mm). With right sides together and raw edges even, pin bodice front lining to bodice front (over **WRONG** side of bodice back and skirt back). Stitch side and upper edges, leaving armhole edges open.



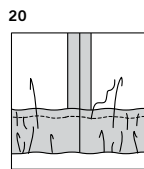
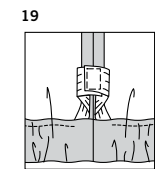
- 15.** **UNDERSTITCH** upper edge of bodice lining. Turn lining to **INSIDE**; press, pressing out armhole edges. Baste raw edge between large and small dots. Pin lower edge of lining over seam. **SLIPSTITCH** in place.

- 16.** Stitch underarm edges of **SLEEVE** (3) together.



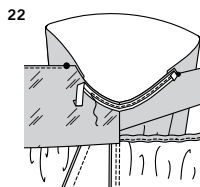
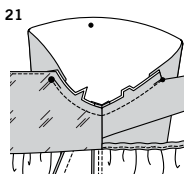
- 17.** To make casing for elastic, press lower edge of sleeve to **INSIDE** along foldline for casing. Turn under raw edge 1/4" (6mm). Press. **EDGE STITCH** close to inner pressed edge, leaving an opening to insert elastic.

- 18.** Cut a piece of elastic the length of the **ELASTIC GUIDE FOR SLEEVE** (5). Transfer markings. Attach a safety pin to one end and thread through casing. Overlap ends and hold with a safety pin.



- 19.** Stitch ends of elastic together securely.

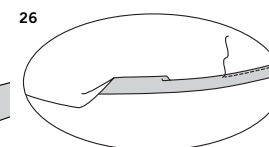
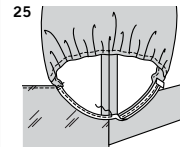
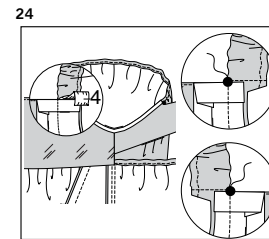
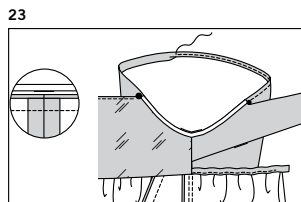
- 20.** Stitch opening closed. Distribute fullness evenly.



- 21.** Turn sleeve **RIGHT** side out. Hold dress **WRONG** side out with armhole toward you. With **RIGHT** sides together, pin sleeve to armhole edge, matching underarm seams, notches, small and large dots. Stitch between the large and small dots, backstitching at dots to reinforce the seam.

- 22.** Cut a piece of single fold bias tape the length of the armhole edge between large and small dots, plus 1" (2.5cm). Open out one edge of tape. Press under 1/2" (1.3cm) on ends. Pin **RIGHT** side of tape to **WRONG** side of armhole edge, placing crease along the 5/8" (2.5cm) seamline, and ends at large and small dots. Stitch between the large and small dots, backstitching at dots to reinforce the seam.

- 23.** Press seam allowance of bodice and sleeve toward sleeve, pressing shoulder edge of sleeve to **INSIDE** along foldline for casing. Turn under raw edge of casing 1/4" (6mm). **EDGE STITCH** in place between large and small dots.



- 24.** Cut a piece of elastic the length of **ELASTIC GUIDE FOR SHOULDER** (4). Transfer markings. Thread elastic through casing. Stitch across ends at small and large dots. Trim seam allowance of underarm seam.

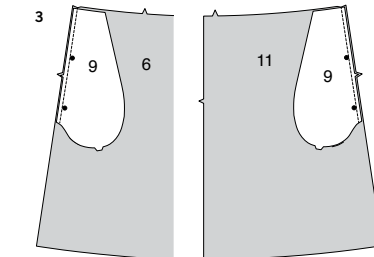
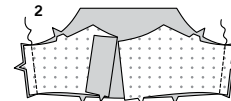
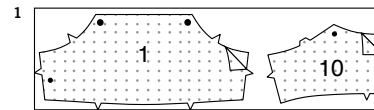
- 25.** Turn pressed edge of bias tape toward sleeve. Stitch close to inner pressed edge and ends.

- 26.** Press up hem allowance on skirt. Turn under raw edge 1/4" (6mm). Stitch close to inner pressed edge.
Tie bow at center back from back extensions when wearing.

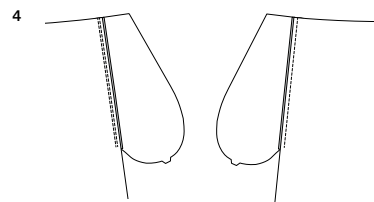
DRESS B

- 1.** Pin interfacing to **WRONG** side of **BODICE FRONT** (1) and **BODICE BACK** (10). Fuse interfacing in place following manufacturer's directions.

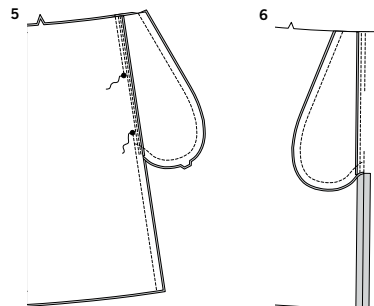
- 2.** Pin bodice front to bodice back at side edges.



- 3.** With **RIGHT** sides together, pin **POCKET** (9) to **SKIRT FRONT** (6) and **SKIRT BACK** (11) sections, matching large dots, having raw edges even. Stitch in 3/8" (1cm) seam.

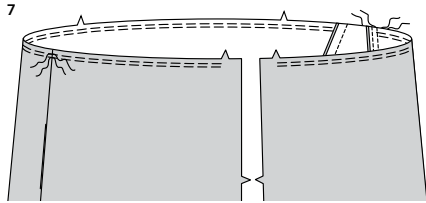


- 4.** **UNDERSTITCH** the front pocket. Press seams toward pockets, pressing pockets out.

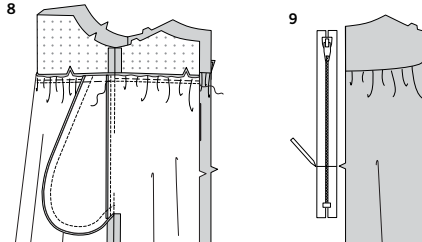


- 5.** Pin skirt front to skirt back at side seams, matching large dots. Stitch side seams, leaving an opening between large dots. Stitch pocket edges together from side seam to upper edge.

- 6.** Clip skirt back seam allowance below pocket. Press seam open below clip. Press pocket toward front.



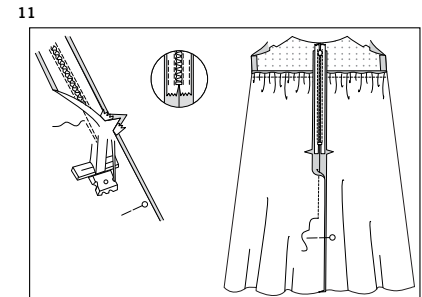
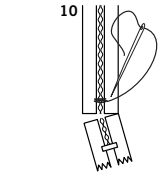
- 7.** To **GATHER** upper edge of skirt between back notches (breaking stitching at side seams and keeping pockets free), stitch 5/8" (1.5cm) from cut edge using a long stitch. Stitch again 1/4" (6mm) from first stitching within the seam allowance.



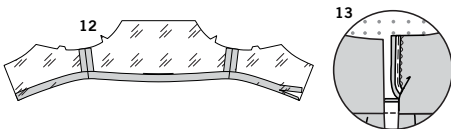
- 8.** With **RIGHT** sides together and raw edges even, pin upper edge of skirt to lower edge of bodice, matching seams and notches, pulling up gathering stitches, and distributing gathers evenly. Stitch. Press seam toward bodice. Baste upper edge of pocket to front, having raw edges even.

- 9.** It may be necessary to adjust the length of your zipper. Measure the back opening of dress from notch to seam line at upper edge, less 1/8" (3mm). Close the zipper and measure from the tab down along the teeth to the length needed. Mark new length.

- 10.** With matching buttonhole twist or heavy-duty thread, make several overcast stitches across zipper teeth at marking. Trim away lower end of zipper tape to within 5/8" (1.5cm) of overcast stitches.

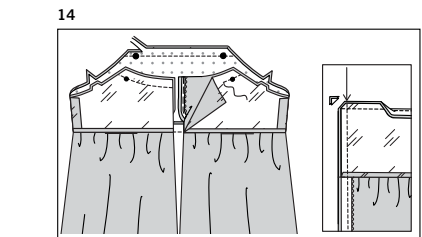


- 11.** Insert **INVISIBLE ZIPPER**, placing top stop 3/4" (2cm) below upper edge. Close zipper and check that it is invisible from the **OUTSIDE**. Pull the free ends of the zipper tape away from the seam allowance. Pin remaining center back seam together below zipper. Position zipper foot all the way to the **LEFT** so the needle goes down through the outer notch of the foot. Start stitching seam 1/4" (6mm) above lowest stitch and slightly to the **LEFT**. Stitch seam for about 3" (7.5cm). Stitch remainder of seam using your regular presser foot. If you prefer, open out each seam allowance at end of zipper and stitch tape to seam allowance.

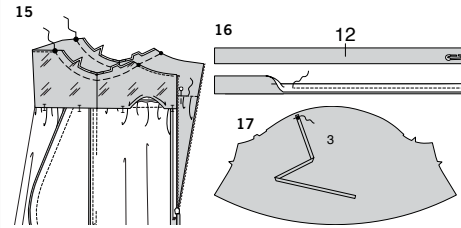


- 12.** Stitch side edges of bodice lining in the same manner as for bodice. Press under 1/2" (1.3cm) on lower edge. Trim to 1/4" (6mm).

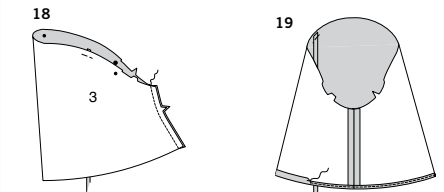
- 13.** Open out center back opening edges of dress, rolling the zipper teeth away from the opening edge.



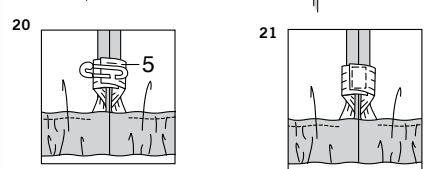
- 14.** With **RIGHT** sides together and raw edges even, pin lining to bodice, matching centers, seams, and notches. Stitch upper edge of bodice front and back, leaving armhole edges open. **TRIM SEAM.** Pin back opening edges together. Using an adjustable zipper foot, stitch across lining 1/2" (1.3cm) from back edges, keeping zipper teeth free. Do not trim back edges.



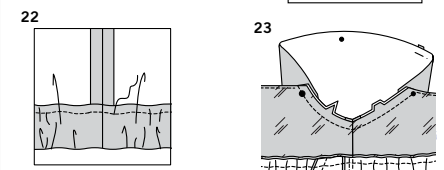
- 15.** **UNDERSTITCH** upper edge of bodice lining as far as possible. Turn lining to **INSIDE**; press, pressing out armhole edges. Baste raw edge between large and small dots. Pin lower edge of lining over seam, placing pins on **OUTSIDE**. On **OUTSIDE**, **STITCH IN THE DITCH** on the seam, catching in pressed edge of lining on the **INSIDE**.



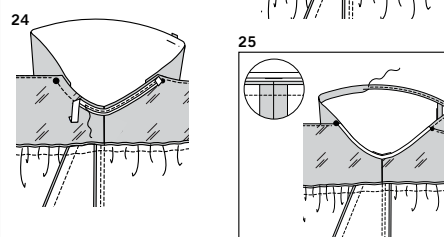
- 16.** On **OUTSIDE**, attach a small safety pin to one end of **TIE** (12) outside the seam allowance and off center. Fold tie in half, lengthwise, with **RIGHT** sides together. Stitch end with safety pin and long edge in a 3/8" (1cm) seam. **TRIM SEAM.**



- 17.** Draw safety pin forward, through fold, turning tie **RIGHT** side out. On **INSIDE**, pin raw edge of tie to **SLEEVE** (3) with raw edges at large dot. Baste to sleeve 1/2" (1.3cm) from raw edge.



- 18.** Stitch underarm edges of sleeve together.



- 19.** To make casing for elastic, press lower edge of sleeve to **INSIDE** along foldline for casing. Turn under raw edge 1/4" (6mm). Press. **EDGESTITCH** close to inner pressed edge, leaving an opening to insert elastic.

- 20.** Cut a piece of elastic the length of the **ELASTIC GUIDE FOR SLEEVE** (5). Transfer markings. Attach a safety pin to one end and thread through casing. Overlap ends and hold with a safety pin.

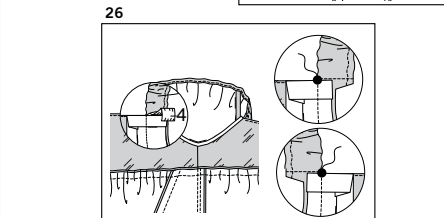
- 21.** Stitch ends of elastic together securely.

- 22.** Stitch opening closed. Distribute fullness evenly.

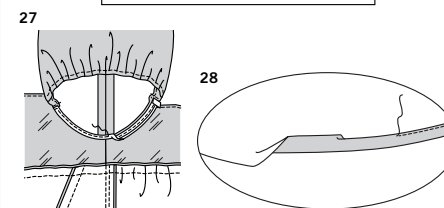
- 23.** Turn sleeve **RIGHT** side out. Hold dress **WRONG** side out with armhole toward you. With **RIGHT** sides together, pin sleeve to armhole edge, matching underarm seams, notches, small and large dots. Stitch between the large and small dots, backstitching at dots to reinforce the seam.

- 24.** Cut a piece of single fold bias tape the length of the armhole edge between large and small dots, plus 1" (2.5cm). Open out one edge of tape. Press under 1/2" (1.3cm) one ends. Pin **RIGHT** side of tape to **WRONG** side of armhole edge, placing crease along the 5/8" (2.5cm) seamline, and ends at large and small dots. Stitch between the large and small dots, backstitching at dots to reinforce the seam.

- 25.** Press seam allowance of bodice and sleeve toward sleeve, pressing shoulder edge of sleeve to **INSIDE** along foldline for casing. Turn under raw edge of casing 1/4" (6mm). **EDGESTITCH** in place between large and small dots.



- 26.** Cut a piece of elastic the length of **ELASTIC GUIDE FOR SHOULDER** (4). Transfer markings. Thread elastic through casing. Stitch across ends at small and large dots. Trim seam allowance of underarm seam.



- 27.** Press pressed edge of bias tape toward sleeve. Stitch close to inner pressed edge and ends.

- 28.** Press up hem allowance on skirt. Turn under raw edge 1/4" (6mm). Stitch close to inner pressed edge.

Make a bow at center back from tie extensions when wearing.



Congrats!

You've completed your sewing adventure

SHARE YOUR LOOK



Post your pattern and tag us
@simplicity_creative_group and **#simplicitypatterns**
for a chance to be featured on our social media.

Look for more PDF patterns at [simplicity.com](https://www.simplicity.com)

Have a question or need help with your sewing project call us at
1-888-588-2700



Simplicity ©2024 a division of IG Design Group Americas Inc. • Atlanta, GA 30342 USA www.thedesigngroup.com • All Rights Reserved. www.simplicity.com • Made in the U.S.A. Fabriqué aux États-Unis.

To be used for individual private home use only and not for commercial or manufacturing purposes. • A usage privé seulement et non à des fins commerciales ou de production en série. • Para uso privado solamente, no se puede utilizar con propósitos de comercialización o de producción en serie.