

S9963

Simplicity®

easy-to-sew



A



B



C



D



Designed and printed in USA.



Easy

CHILDREN'S AND GIRLS' TOPS, SKIRTS, AND DRESSES

Suggested Fabrics: A,C: Batiks, Cotton Blends, Cotton Lawns, Gauze, Linen Blends, Seersucker. B,D: Single-edge scalloped Dotted Swiss, Eyelet, Lace. **Lining:** Cotton Blends, Polyester Blends.

Notions: A,B,C,D: ¼ yd. (0.8m) of ½" (1.3cm) elastic (for Children and Girls). **Also for A,B:** ¾" (1cm) elastic: 1½ yds. (1.5m) for Children, 2 yds. (1.9m) for Girls. **Also for C,D:** ¾" (1cm) elastic: ¼ yd. (0.8m) for Children, 1½ yds. (1.1m) for Girls, one pkg. of ¾" (2cm) single fold bias tape (for Children and Girls).

Sizes	3	4	5	6	7	8	10	12	14	
BODY MEASUREMENTS: Select pattern size based on body measurements										
Chest	22	23	24	25	26	27	28½	30	32	Ins.
Waist	20½	21	21½	22	23	23½	24½	25½	26½	"
Hip	—	24	25	26	27	28	30	32	34	"
Back-neck to waist	9	9½	10	10½	11½	12	12½	13½	14½	"
Approx. Height	38	41	44	47	50	52	56	58½	61	"
Top and Skirt A	45**	1%	1%	1%	1%	1%	1%	1%	2	Yds.
	60**	1%	1%	1%	1%	1%	1%	1%	1%	"
Lining A,B	45***	1%	1%	1%	1%	1%	1%	1%	1%	Yds.
Top and Skirt B	45, 60**	3%	3%	3%	3%	3%	3%	3%	4	Yds.
Dress C	45**	1%	1%	1%	1%	1%	2	2%	2%	Yds.
	60**	1%	1%	1%	1%	1%	1%	1%	1%	"
Lining C,D	45***	1%	1%	1%	1%	1%	1%	1%	1%	Yds.
Dress D	45, 60**	1%	2	2	2½	2½	2½	2½	2½	Yds.

FINISHED GARMENT MEASUREMENTS (Includes Design and Wearing Ease)

Width, lower edge										
Skirt A,B	59	60	61	62	67%	68%	70	71%	73%	Ins.
Dress C,D	59%	60%	61%	62%	72%	73%	75	76%	78%	"
Finished back length from base of neck										
Dress C,D	20	21	22½	23½	27%	28	29	30%	32%	Ins.
Finished back length from waist										
Skirt A,B	11½	12	12½	13½	14%	15	15½	16%	17%	Ins.

*with nap **without nap

Facile

HAUTS, JUPES, ET ROBES POUR ENFANTS ET FILLETTES

Tissus Conseillés: A,C: Batiks, Cottonnades, Linon de coton, Gaze, Lin mélangés, Seersucker. B,D: Tissus de festonnée à simple bord en Plumetis, Broderie anglaise, Dentelle. **Doublure:** Cottonnades, Mélanges de polyester.

Mercerie: A,B,C,D: 0.8m d'élastique de 1.3cm (pour enfants et fillettes). **Aussi pour A,B:** Élastique de 1cm: 1.5m pour enfants, 1.9m pour fillettes. **Aussi pour C,D:** Élastique de 1cm: 0.8m pour enfants, 1.1m pour fillettes, 1 paquet de ruban de biais simple de 2cm (pour enfants et fillettes).

Tailles	3	4	5	6	7	8	10	12	14	
MESURES DU CORPS: Choisissez la taille du patron basée sur les mesures du corps										
Poitrine	56	58	61	64	66	69	73	76	81	cm
Taille	52	53	55	56	58	60	62	65	67	"
Hanches	—	61	64	66	69	71	76	81	87	"
Dos du cou à la taille	23	24	25.5	27	29.5	31	32.5	34.5	36	"
Taille approx.	97	104	112	119	127	132	142	149	155	"
Haut et jupe A	115cm*	1.1	1.3	1.3	1.4	1.4	1.5	1.7	1.8	m
	150cm*	1.0	1.0	1.1	1.1	1.4	1.5	1.5	1.6	"
Doublure A,B	115cm**	1.0	1.0	1.1	1.1	1.4	1.5	1.5	1.6	m
Haut et jupe B	115, 150cm*	3.0	3.0	3.1	3.1	3.4	3.4	3.5	3.7	m
Robe C	115cm*	1.0	1.1	1.3	1.3	1.5	1.7	1.8	2.2	m
	150cm*	1.0	1.1	1.3	1.3	1.4	1.4	1.5	1.6	"
Doublure C,D	115cm**	1.0	1.1	1.1	1.3	1.4	1.4	1.5	1.6	m
Robe D	115, 150cm*	1.7	1.7	1.8	1.8	2.1	2.1	2.2	2.3	m

MESURES DES VÊTEMENTS FINI (Motif et aisance de port compris)

Largeur à l'ourlet										
Jupe A,B	150	152	155	157	171	174	178	182	187	cm
Robe C,D	152	154	157	159	184	187	191	194	199	"
Longueur finie – dos, votre nuque à l'ourlet										
Robe C,D	51	53	57	60	69	73	74	77	82	cm
Longueur finie – dos, taille à l'ourlet										
Jupe A,B	29	30	32	34	37	38	39	41	44	cm

*avec sens **sans sens



A



B



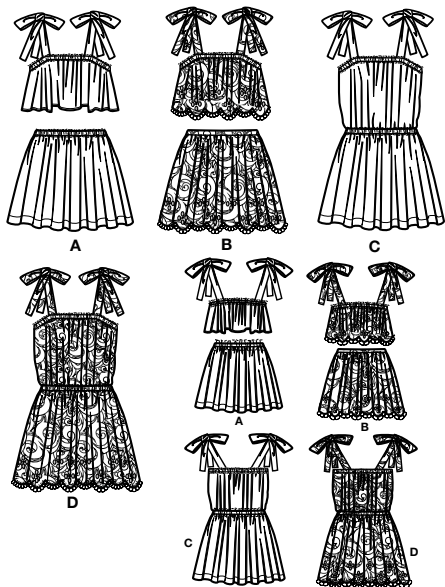
C



D

Simplicity®

Thank you for purchasing this Simplicity pattern.
We made every effort to provide you with a high quality product.



- 1 Front Lining-A,B
- 2 Back Lining-A,B
- 3 Shoulder Strap-A,B,C,D
- 4 Front and Back-A,B
- 5 Elastic Guide for Upper Edge-A,B,C,D
- 6 Elastic Guide for Lower Edge-A,B
- 7 Skirt Front and Back-A,B
- 8 Elastic Guide for Waist-A,B,C,D
- 9 Front-C,D
- 10 Back-C,D


www.simplicity.com

info@simplicity.com


1-888-588-2700

The Pattern

- SYMBOLS**
- ↔ GRAIN LINE Place on straight grain of fabric parallel to selvage
 - ↓ PLACE SOLID LINE on fold of fabric.
 - CENTER FRONT OR BACK of garment.
 - ▽▽ NOTCHES
 - DOTS
 - CUTTING LINE
 - == LENGTHEN OR SHORTEN LINES

SEAM ALLOWANCE: 5/8" (1.5cm) unless otherwise stated is included but not printed on MULTI-SIZE PATTERNS. Mark your size with colored felt tip pen. See chart on tissue for how to use MULTI-SIZE PATTERNS.

ADJUST IF NEEDED

Make adjustments before placing pattern on fabric.

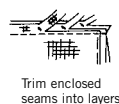
TO LENGTHEN:
Cut pattern between lengthen or shorten lines. Spread pattern evenly, the amount needed and tape to paper.

TO SHORTEN:
At lengthen or shorten lines, make an even pleat taking up amount needed. Tape in place.

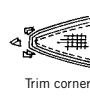
When lengthen or shorten lines are not given, make adjustments at lower edge of pattern.

Sewing

- SEW garment following **Sewing Directions**.
- PIN or machine-baste seams matching notches.
- STITCH 5/8" (1.5 cm) seams unless otherwise stated.
- PRESS seams open unless otherwise indicated clipping when necessary so seams will lie flat.
- TRIM seams to reduce bulk, as shown below.



Trim enclosed seams into layers



Trim corners



Clip inner curves



Notch outer curves

General Directions

Cutting/Marking

BEFORE CUTTING:

PRESS pattern pieces with a warm dry iron. PRE-SHRINK fabric by pre-washing washables or steam-pressing non-washables.

CIRCLE your cutting layout.

PIN pattern to fabric as shown in Cutting Layouts.

• FOR DOUBLE THICKNESS: Fold fabric with RIGHT sides together.

• FOR SINGLE THICKNESS: Place fabric RIGHT side up.

• FOR PILE, SHADED OR ONE WAY DESIGN FABRICS: Use "with nap" layouts

AFTER CUTTING:

Transfer markings to WRONG side of fabric before removing pattern. Use pin and chalk method or dressmaker's tracing paper and wheel.

To Quick Mark:

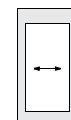
- Snip edge of fabric to mark notches, ends of fold lines and center lines.
- Pin mark dots.



SPECIAL CUTTING NOTES

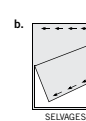
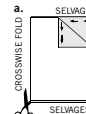
★ If layout shows a piece extending past fold, cut out all pieces except piece that extends.

Open out fabric to single thickness. Cut extending piece on RIGHT side of fabric in position shown.

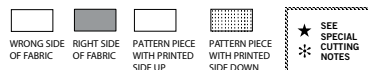


* Mark small arrows along both selvages indicating direction of nap or design. Fold fabric crosswise with RIGHT sides together, and cut along fold (a).

Turn one fabric layer around so arrows on both layers go in the same direction. Place RIGHT sides together (b).



Cutting Layouts

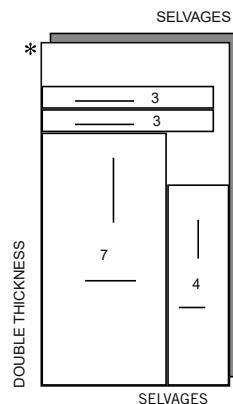


POSITION OF PATTERN PIECES MAY VARY SLIGHTLY ACCORDING TO YOUR PATTERN SIZE

TOP AND SKIRT A

USE PIECES 3 4 7

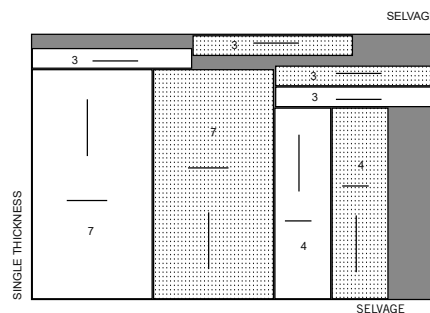
45" (115CM)
WITH NAP
SIZES 3 4 5 6



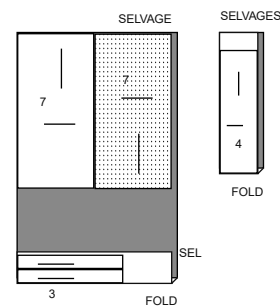
45" (115CM)
WITH NAP
SIZES 7 8 10



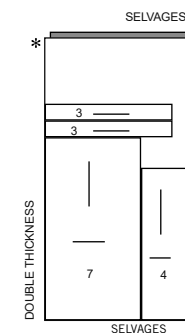
45" (115CM)
WITH NAP
SIZES 12 14



60" (150CM)
WITH NAP
SIZES 3 4 5 6



60" (150CM)
WITH NAP
SIZES 7 8 10 12 14



CUTTING LAYOUTS CONTINUED ON PAGE 2

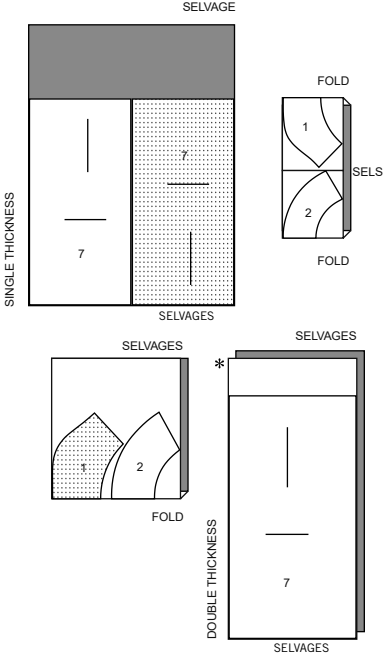
S9963

2 of 4

LINING A (FRONT AND BACK SKIRT, INSIDE TOP)

USE PIECES 1 2 7

45" (115CM)
WITHOUT NAP
SIZES 3 4 5 6

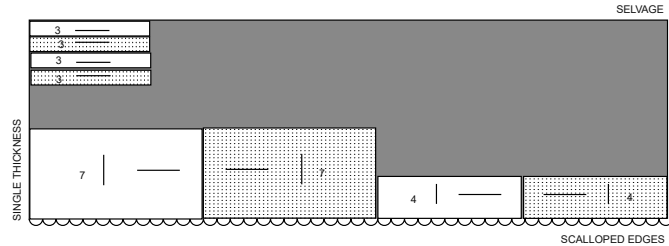


45" (115CM)
WITHOUT NAP
SIZES 7 8 10 12 14

TOP AND SKIRT B

USE PIECES 3 4 7

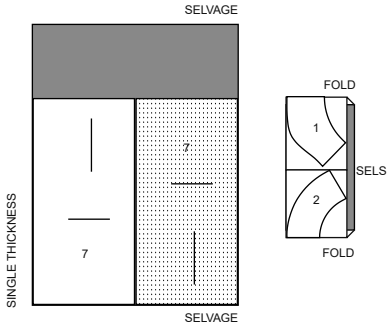
45" 60" (115CM/150CM) WITH NAP
ALL SIZES



LINING B (FRONT AND BACK SKIRT, INSIDE TOP)

USE PIECES 1 2 7

45" (115CM)
WITHOUT NAP
SIZES 3 4 5 6

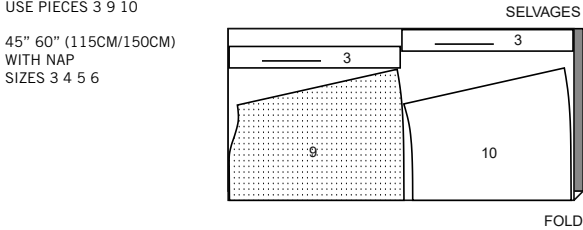


45" (115CM)
WITHOUT NAP
SIZES 7 8 10 12 14

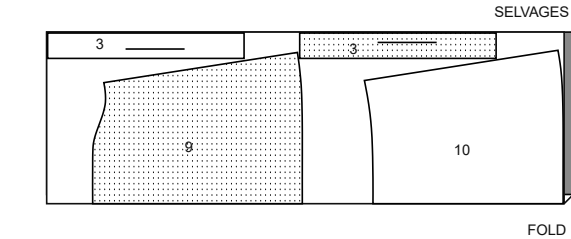
DRESS C

USE PIECES 3 9 10

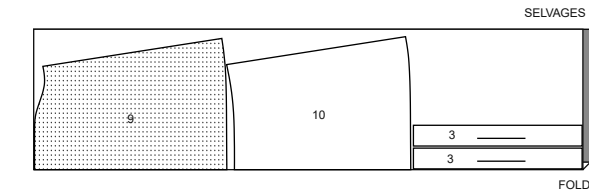
45" 60" (115CM/150CM)
WITH NAP
SIZES 3 4 5 6



45" (115CM)
WITH NAP
SIZES 7 8 10



45" (115CM)
WITH NAP
SIZES 12 14

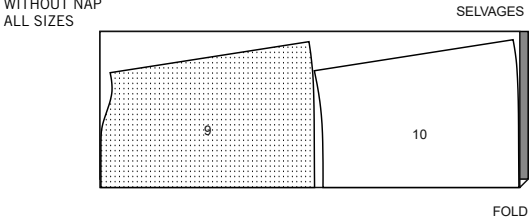


60" (150CM)
WITH NAP
SIZES 7 8 10 12 14

LINING C

USE PIECES 9 10

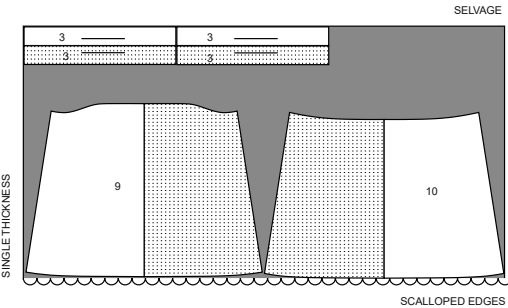
45" (115CM)
WITHOUT NAP
ALL SIZES



DRESS D

USE PIECES 3 9 10

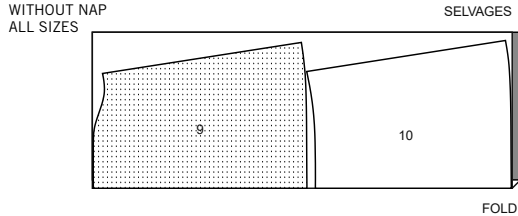
45" 60" (115CM/150CM)
WITH NAP
ALL SIZES



LINING D

USE PIECES 9 10

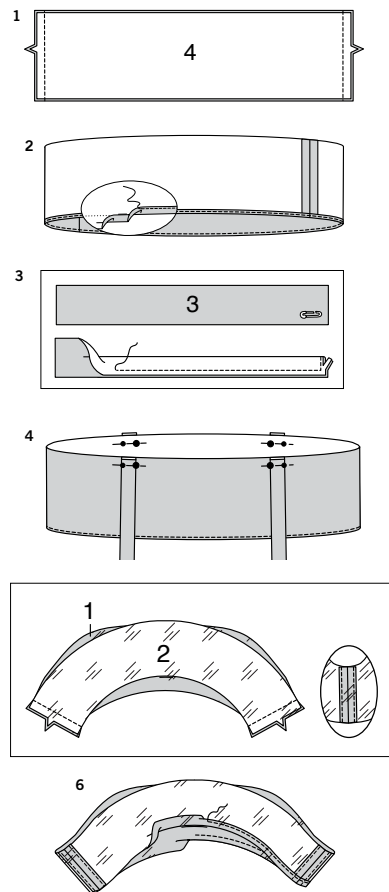
45" (115CM)
WITHOUT NAP
ALL SIZES



SEWING TUTORIALS



Build your skills viewing short, easy-to-follow videos at [simplicity.com/sewingtutorials](https://www.simplicity.com/sewingtutorials)



Sewing Directions

FABRIC KEY



Read **General Directions** on page 1 before you begin.

Sewing methods in **BOLD TYPE** have Sewing Tutorial Video available. Scan QR CODE to watch videos:

EDGESTITCH – see Machine Stitches: “how to sew an edgestitch” video.

NARROW HEM – see Hems: “sewing narrow hems” video.

SLIPSTITCH – see Hand Stitching: “how to slip stitch” video.

TRIM SEAM – see Seams: “how to trim, clip and layer seams” video.

UNDERSTITCH – see Machine Stitches: “how to understitch” video.

PATTERN PIECES WILL BE IDENTIFIED BY NUMBERS THE FIRST TIME THEY ARE USED.

STITCH 5/8" (1.5CM) SEAMS WITH RIGHT SIDES TOGETHER UNLESS OTHERWISE STATED.

TOP AND SKIRT A, B

NOTE: Trim 1/2" (1.3cm) from lower edge of **SKIRT FRONT AND BACK (7)** lining before stitching seams.

1. With **RIGHT** sides together and raw edges even, Pin side edges of **FRONT AND BACK (4)**, matching notches. Stitch.

2. FOR VIEW A – Press under 5/8" (1.5cm) hem allowance on lower edge of top. To form a **NARROW HEM**, tuck under raw edge to meet crease. Press. **EDGESTITCH** hem in place close to inner pressed edge.

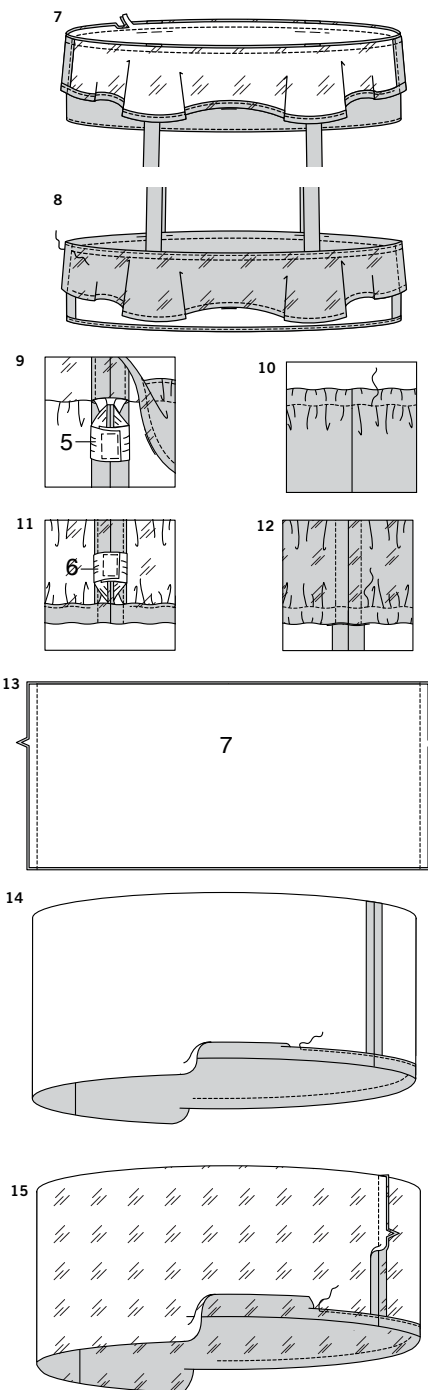
CONTINUE AS FOLLOWS FOR BOTH VIEWS

3. On **OUTSIDE**, attach a small safety pin to unmarked end of **SHOULDER STRAP (3)**, outside the seam allowance and off center. Fold shoulder strap in half, lengthwise with **RIGHT** sides together. Stitch long edge and unmarked end in a 3/8" (1cm) seam. **TRIM SEAM.**

4. Draw safety pin forward, through fold, turning strap **RIGHT** side out. Press. On **OUTSIDE**, pin straps to front and back, matching small and large dots. Baste.

5. With **RIGHT** sides together and raw edges even, pin **FRONT LINING (1)** to **BACK LINING (2)** at side edges, matching notches. Stitch. Press seams open. Stitch close to raw edges through all thicknesses.

6. On **INSIDE**, press up 3/4" (2cm) on lower edge of lining. Turn under raw edge 1/4" (6mm). Press. **EDGESTITCH** close to inner pressed edge, leaving an opening to insert elastic.



7. Pin lining to front and back with **RIGHT** sides together at upper edge, matching centers and seams. Stitch in a 3/8" (1cm) seam. **TRIM SEAM.**

8. UNDERSTITCH the lining. Turn lining to **INSIDE**; press. To make a casing for elastic, stitch 1/2" (1.3cm) from pressed edge, leaving an opening to insert elastic.

9. Cut a piece of 3/8" (1cm) elastic the length of the **ELASTIC GUIDE FOR UPPER EDGE (5)**. Transfer markings. Insert elastic through opening in casing. Stitch ends together, securely.

10. On **OUTSIDE**, stitch opening closed, connecting to previous stitching. Distribute fullness evenly.

11. Cut a piece of 3/8" (1cm) elastic the length of the **ELASTIC GUIDE FOR LOWER EDGE (6)**. Transfer markings. Insert elastic through opening in lower casing. Stitch ends together, securely.

12. Stitch opening closed, connecting to previous stitching. Distribute fullness evenly.

TIP: To secure elastic so it won't twist in wearing, stitch through all thicknesses in the groove of each seam.

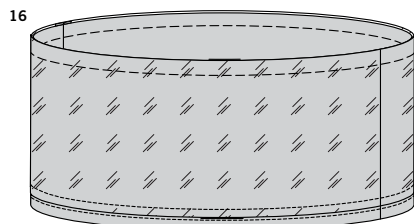
Tie shoulder straps together and make bows, as shown on envelope.

13. Pin **SKIRT FRONT AND BACK (7)** sections together at side edges, matching notches. Stitch.

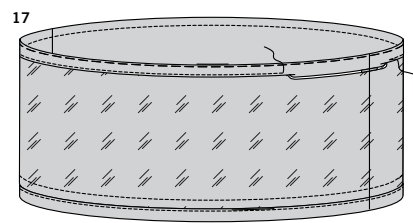
14. FOR VIEW A – Press under 1-1/4" (3.2cm) hem allowance on lower edge of skirt. Turn under raw edge 1/4" (6mm). Press. **EDGESTITCH** close to inner pressed edge.

CONTINUE AS FOLLOWS FOR BOTH VIEWS

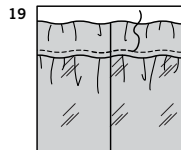
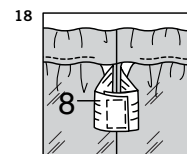
15. Pin skirt front and back lining sections together at side edges, matching notches. Stitch. **For View A**, press under 1-1/4" (3.2cm) hem allowance on lower edge of skirt lining. **Note: For View B**, press under 1-3/4" (4.5cm) hem allowance on lower edge of skirt lining. Turn under raw edge to meet crease. Press. **EDGESTITCH** close to inner pressed edge.



16. Pin lining to skirt with **WRONG** sides together, matching seams and having upper edges even. Baste 1" (2.5cm) from upper edge.



17. Fold upper edge to **INSIDE** along basting. Turn under raw edge 1/4" (6mm). Press. To form casing for elastic, stitch 5/8" (1.5cm) from upper pressed edge, leaving an opening to insert elastic. Remove basting.



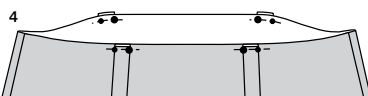
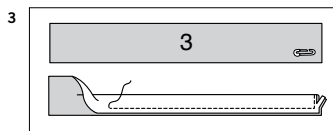
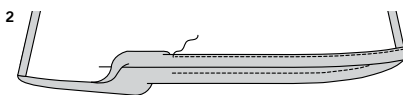
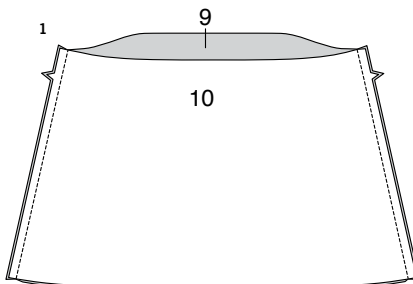
18. Cut a piece of 1/2" (1.3cm) elastic the length of the **ELASTIC GUIDE FOR WAIST** (8). Transfer markings. Insert elastic through opening in casing. Stitch ends together, securely.

19. Stitch opening closed, connecting to previous stitching. Distribute fullness evenly.

TIP: To secure elastic so it won't twist in wearing, stitch through all thicknesses in the groove of each seam.

DRESS C, D

NOTE: Trim 1/2" (1.3cm) from lower edge of **FRONT** (9) **AND BACK** (10) linings before stitching seams.



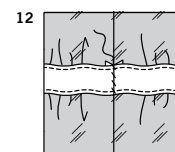
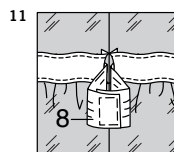
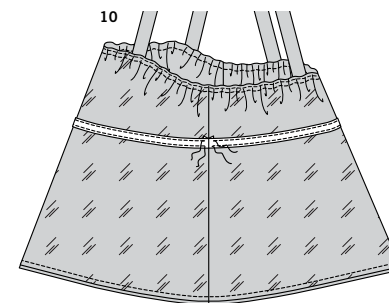
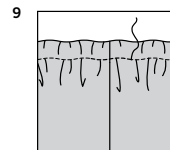
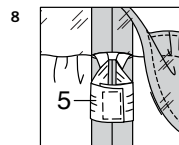
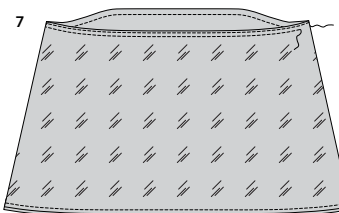
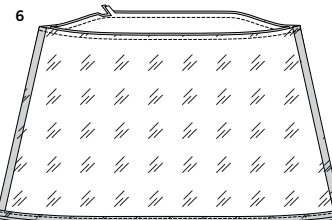
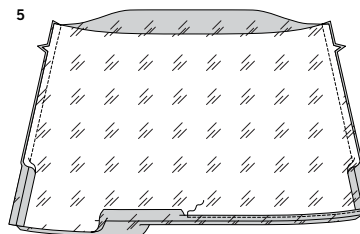
1. Pin **FRONT** (9) to **BACK** (10) at side edges, matching notches. Stitch.

2. **FOR VIEW C** – Press under 1-1/4" (3.2cm) hem allowance on lower edge of dress. Tuck under raw edge 1/4" (6mm). Press. **EDGESTITCH** hem in place close to inner pressed edge.

CONTINUE AS FOLLOWS FOR BOTH VIEWS

3. On **OUTSIDE**, attach a small safety pin to unmarked end of **SHOULDER STRAP** (3), outside the seam allowance and off center. Fold shoulder strap in half, lengthwise with **RIGHT** sides together. Stitch long edge and unmarked end in a 3/8" (1cm) seam. **TRIM SEAM.**

4. Draw safety pin forward, through fold, turning strap **RIGHT** side out. Press. On **OUTSIDE**, pin straps to front and back, matching small and large dots. Baste.



5. Pin dress front and back lining sections together at side edges, matching notches. Stitch. **For View C**, press under 1-1/4" (3.2cm) hem allowance on lower edge of skirt lining. **For View D**, press under 1-3/4" (4.5cm) hem allowance on lower edge of skirt lining. Turn under raw edge to meet crease. Press. **EDGESTITCH** close to inner pressed edge.

6. Pin lining to dress with **RIGHT** sides together, matching centers and seams. Stitch upper edge in a 3/8" (1cm) seam. **TRIM SEAM.**

7. **UNDERSTITCH** the lining. Turn lining to **INSIDE**; press. To make a casing for elastic, stitch 1/2" (1.3cm) from pressed edge, leaving an opening to insert elastic.

8. Cut a piece of 3/8" (1cm) elastic the length of the **ELASTIC GUIDE FOR UPPER EDGE** (5). Transfer markings. Insert elastic through opening in casing. Stitch ends together, securely.

9. On **OUTSIDE**, stitch opening closed, connecting to previous stitching. Distribute fullness evenly. **TIP:** To secure elastic so it won't twist in wearing, stitch through all thicknesses in the groove of each seam.

10. Cut a piece of 3/4" (2cm) single fold bias tape the length of the waist casing line, plus 3/4" (2cm). Press under 3/8" (1cm) on ends. On **INSIDE**, pin lower edge of binding to dress along casing line, having ends meet at one side seam. **EDGESTITCH** close to long edges of tape.

11. Cut a piece of 1/2" (1.3cm) elastic the length of the **ELASTIC GUIDE FOR WAIST** (8). Transfer markings. Insert elastic through opening in casing. Stitch ends together, securely.

12. **SLIPSTITCH** opening closed. Distribute fullness evenly. **TIP:** To secure elastic so it won't twist in wearing, stitch through all thicknesses in the groove of each seam. **Tie shoulder straps together and make bows, as shown on envelope.**



Congrats!

You've completed your sewing adventure

SHARE YOUR LOOK



Post your pattern and tag us
@simplicity_creative_group and **#simplicitypatterns**
for a chance to be featured on our social media.

Look for more PDF patterns at [simplicity.com](https://www.simplicity.com)

Have a question or need help with your sewing project call us at
1-888-588-2700



Simplicity ©2024 a division of IG Design Group Americas Inc. • Atlanta, GA 30342 USA www.thedesigngroup.com • All Rights Reserved. www.simplicity.com • Made in the U.S.A. Fabriqué aux États-Unis.

To be used for individual private home use only and not for commercial or manufacturing purposes. • A usage privé seulement et non à des fins commerciales ou de production en série. • Para uso privado solamente, no se puede utilizar con propósitos de comercialización o de producción en serie.