

S9961

Simplicity®



D



A



B



C



Designed and printed in USA.



A,B,D

Average

TODDLERS' SHORTS, PANTS, HAT AND KNIT TOP WORN FRONT OR BACK

**Suggested Fabrics:** A in Stretch Knits only such as: Interlock, ITY, Rib Knit. See Pick-A-Knit® Rule. **B,C,D:** Batiks, Calico, Chambray, Cotton Blends, Double Gauze, Gingham, Lightweight Denim, Lightweight Twill, Linen Blends, Pique, Seersucker. **Lining:** Cotton Blends, Polyester Blends. **Interfacing:** Lightweight Fusible.

**Notions:** A: One pkg. of ½" (1.3cm) single fold bias tape. **B,C:** 2 yds. (1.9m) of ¾" (1cm) elastic. **D:** ¼ yd. (0.6m) of ¾" (1.5cm) ribbon.

Sizes	½	1	2	3	4	
<b>BODY MEASUREMENTS: Select pattern size based on body measurements</b>						
Chest	19	20	21	22	23	Ins.
Waist	19	19½	20	20½	21	"
Hip	28	31	34	37	40	"
Approx. Height	26½	31	35	38	41	"
Top A	60** - ¾ yd.					
Shorts B	45, 60** - ¾ yd.					
Pants C	45**	¾	1	1	1½	Yd.
	60**	¾	¾	¾	¾	"

Hat D - available in three sizes **S** (19") **M** (20") **L** (21")  
45\*\* - ¾ yd. **Lining:** 45\*\*\* - ¾ yd. **Interfacing:** 20" - 1 yd.

FINISHED GARMENT MEASUREMENTS (Includes Design and Wearing Ease)

Width, each leg						
Shorts B	13½	14½	15	15½	16½	Ins.
Pants C	12	12½	13	13½	14	"
Finished back length from base of neck						
Top A	7½	8	8½	9	9½	Ins.
Finished side length from waist						
Shorts B	8½	9	9½	10	10½	Ins.
Pants C	17	18½	20	21½	23	"

\*with nap \*\*without nap

Moins Facile

SHORT, PANTALON, CHAPEAU ET HAUT EN TRICOT PORTÉ DEVANT OU DOS POUR PETITS ENFANTS

**Tissus Conseillés:** A en tricot extensibles seulement tels que: Interlock, Tricot interlock en fil retors, Tricot à côtes. Reportez-vous à la règle Pick-A-Knit®. **B,C,D:** Batiks, Calicot, Chambray, Cotonnades, Gaze double, Vichy, Denim léger, Twill léger, Lin mélangés, Piqué, Seersucker. **Doublure:** Cotonnades, Mélanges de polyester. **Entoilage:** Thermocollant léger.

**Mercerie:** A: 1 paquet de ruban de biais simple de 1.3cm. **B,C:** 1.9m d'élastique de 1cm. **D:** 0.6m de ruban de 1.5cm.

Tailles	½	1	2	3	4	
<b>MESURES DU CORPS: Choisissez la taille du patron basée sur les mesures du corps</b>						
Poitrine	48	51	53	56	58	cm
Taille	48	50	51	52	53	"
Hanches	71	79	86	94	102	"
Taille approx.	67	79	89	97	104	"
Haut A	150cm* - 0.7m					
Short B	115, 150cm* - 0.7m					
Pantalon C	115cm*	0.8	0.9	0.9	0.9	m
	150cm*	0.6	0.6	0.7	0.7	"

Chapeau D - disponible en trois tailles **P** (48cm) **M** (51cm) **G** (53cm)  
115cm\* - 0.6m **Doublure:** 115cm\*\* - 0.3m **Entoilage:** 51cm - 0.9m

MESURES DES VÊTEMENTS FINI (Motif et aisance de port compris)

Largeur, chaque jambe						
Short B	34	36	38	40	42	cm
Pantalon C	30	32	33	34	36	"
Longueur finie – dos, votre nuque à l'ourlet						
Haut A	19	20	22	23	24	cm
Longueur finie – côté, taille à l'ourlet						
Short B	22	23	24	25	27	cm
Pantalon C	43	47	51	55	58	"

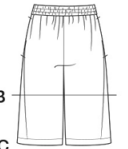
\*avec sens \*\*sans sens



A



A



B

C



D

Use the 1 inch (2.54cm) box to ensure you are using rule at 100%

Utilisez la boîte de 2.54 cm pour vous assurer d'utiliser la règle à 100%.

Utilizar un cuadrado de 2.54 cm para asegurarse de estar usando la regla al 100%.

PICK-A-KNIT® RULE

FOR THIS PATTERN - 4" (10 cm) OF KNIT FABRIC MUST STRETCH CROSSWISE FROM HERE  
POUR CE PATRON - LE JERSEY DOIT S'ETIRER DANS LA LARGEUR DE 4" (10 cm) DEPUIS ICI  
PARA ESTE PATRON - LAS MALLAS DEBEN ESTIRARSE A LO ANCHO POR 4" (10 cm) DESDE AQUI



TO HERE 50%  
JUSQUE LA 50%  
HASTA ALLA 50%



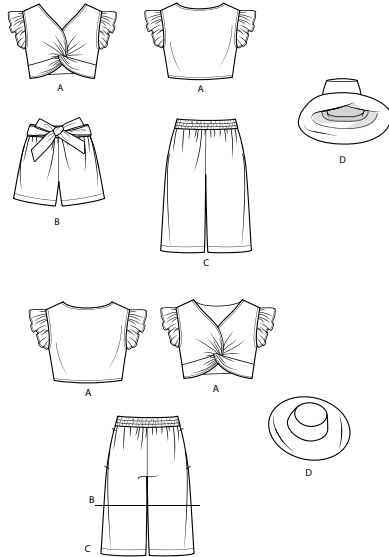
When using the Pick-A-Knit® rule to measure your fabrics stretch capacity, rule must be viewed or printed at 100%.

Quand vous utilisez la règle Pick-A-Knit® pour mesurer la capacité d'élasticité des tissus, la règle doit être visible ou imprimée à 100%.

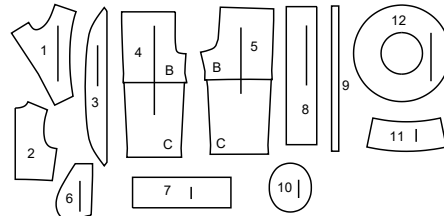
Al utilizar la regla Pick-A-Knit® para medir la capacidad de elasticidad de las telas, la regla debe estar visible o impresa al 100%.

# Simplicity®

Thank you for purchasing this Simplicity pattern.  
We made every effort to provide you with a high quality product.



12 PIECES



- 1 Front-A  
2 Back-A  
3 Armhole Ruffle-A  
4 Front-B,C  
5 Back-B,C  
6 Pocket-B,C  
7 Casing-B,C  
8 Tie End-B  
9 Elastic Guide for Casing-B,C  
10 Top-D  
11 Crown-D  
12 Brim-D



www.simplicity.com



info@simplicity.com



1-888-588-2700

## General Directions

### The Pattern

- SYMBOLS**
- GRAIN LINE Place on straight grain of fabric parallel to selvage
  - PLACE SOLID LINE on fold of fabric.
  - CENTER FRONT OR BACK of garment.
  - NOTCHES
  - DOTS
  - CUTTING LINE
  - LENGTHEN OR SHORTEN LINES

SEAM ALLOWANCE: 5/8" (1.5cm) unless otherwise stated is included but not printed on MULTI-SIZE PATTERNS. Mark your size with colored felt tip pen. See chart on tissue for how to use MULTI-SIZE PATTERNS.

**ADJUST IF NEEDED**  
Make adjustments before placing pattern on fabric.

**TO LENGTHEN:**  
Cut pattern between lengthen or shorten lines. Spread pattern evenly, the amount needed and tape to paper.

**TO SHORTEN:**  
At lengthen or shorten lines, make an even pleat taking up amount needed. Tape in place.

When lengthen or shorten lines are not given, make adjustments at lower edge of pattern.

### Cutting/Marking

**BEFORE CUTTING:**  
PRESS pattern pieces with a warm dry iron. PRE-SHRINK fabric by pre-washing washables or steam-pressing non-washables.

CIRCLE your cutting layout.

PIN pattern to fabric as shown in Cutting Layouts.

• FOR DOUBLE THICKNESS: Fold fabric with RIGHT sides together.

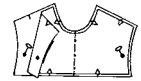
• FOR SINGLE THICKNESS: Place fabric RIGHT side up.

• FOR PILE, SHADED OR ONE WAY DESIGN FABRICS: Use "with nap" layouts

**AFTER CUTTING:**  
Transfer markings to WRONG side of fabric before removing pattern. Use pin and chalk method or dressmaker's tracing paper and wheel.

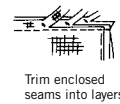
#### To Quick Mark:

- Snip edge of fabric to mark notches, ends of fold lines and center lines.
- Pin mark dots.

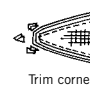


### Sewing

- SEW garment following **Sewing Directions**.
- PIN or machine-baste seams matching notches.
- STITCH 5/8" (1.5 cm) seams unless otherwise stated.
- PRESS seams open unless otherwise indicated clipping when necessary so seams will lie flat.
- TRIM seams to reduce bulk, as shown below.



Trim enclosed seams into layers



Trim corners



Clip inner curves

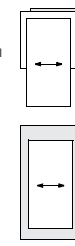


Notch outer curves

### SPECIAL CUTTING NOTES

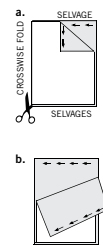
★ If layout shows a piece extending past fold, cut out all pieces except piece that extends.

Open out fabric to single thickness. Cut extending piece on RIGHT side of fabric in position shown.

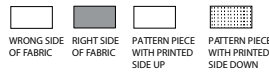


✱ Mark small arrows along both selvages indicating direction of nap or design. Fold fabric crosswise with RIGHT sides together, and cut along fold (a).

Turn one fabric layer around so arrows on both layers go in the same direction. Place RIGHT sides together (b).



## Cutting Layouts

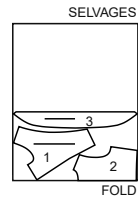


POSITION OF PATTERN PIECES MAY VARY SLIGHTLY ACCORDING TO YOUR PATTERN SIZE

### TOP A

USE PIECES 1 2 3

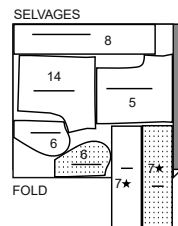
60" (150CM)  
WITH NAP  
ALL SIZES



### SHORTS B

USE PIECES 4 5 6 7 8

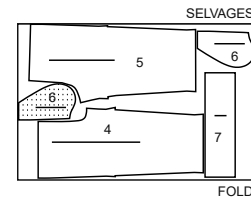
45" TO 60" (115CM TO 150CM)  
WITH NAP  
ALL SIZES



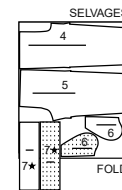
### PANTS C

USE PIECES 4 5 6 7

45" (115CM)  
WITH NAP  
ALL SIZES



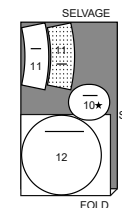
60" (150CM)  
WITH NAP  
ALL SIZES



### HAT D

USE PIECES 10 11 12

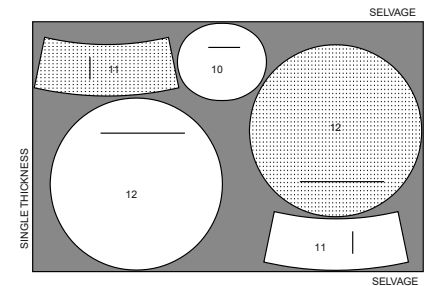
45" (115CM)  
WITH NAP  
ALL SIZES



### INTERFACING

USE PIECES 10 11 12

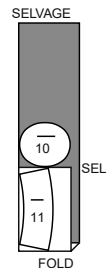
20" (51CM)  
ALL SIZES



### LINING

USE PIECES 10,11

45" (115CM)  
WITHOUT NAP  
ALL SIZES



## SEWING TUTORIALS



Build your skills viewing short, easy-to-follow videos at [simplicity.com/sewingtutorials](https://www.simplicity.com/sewingtutorials)

## Sewing Directions

## FABRIC KEY



Read **General Directions** on page 1 before you begin.

Sewing methods in **BOLD TYPE** have Sewing Tutorial Video available. Scan QR CODE to watch videos:

**GATHER** - see Gathering: "sewing two row gathers" video.

**NARROW HEM** - see Hems: "sewing narrow hems" video.

**REINFORCE** - see Machine Stitches: "how to reinforce" video.

**SLIPSTITCH** - see Hand Stitching: "how to slipstitch" video.

**STITCH IN THE DITCH** - see Machine Stitches: "how to stitch in the ditch" video.

**TRIM** - see "how to trim, clip, and layer seams" video.

**UNDERSTITCH** - see Machine Stitches: "how to understitch" video.

**PATTERN PIECES WILL BE IDENTIFIED BY NUMBERS THE FIRST TIME THEY ARE USED.**

**STITCH SEAMS WITH RIGHT SIDES TOGETHER UNLESS OTHERWISE STATED.**

## TOP A

**NOTE:** Top can be worn with the twist in the front or in the back.

**1.** To **REINFORCE** front (1) sections, using fine stitches, stitch along seam line, starting and ending 1" (2.5cm) before and after large dots. Clip seam allowance to stitching at each large dot, being careful not to clip into stitching.

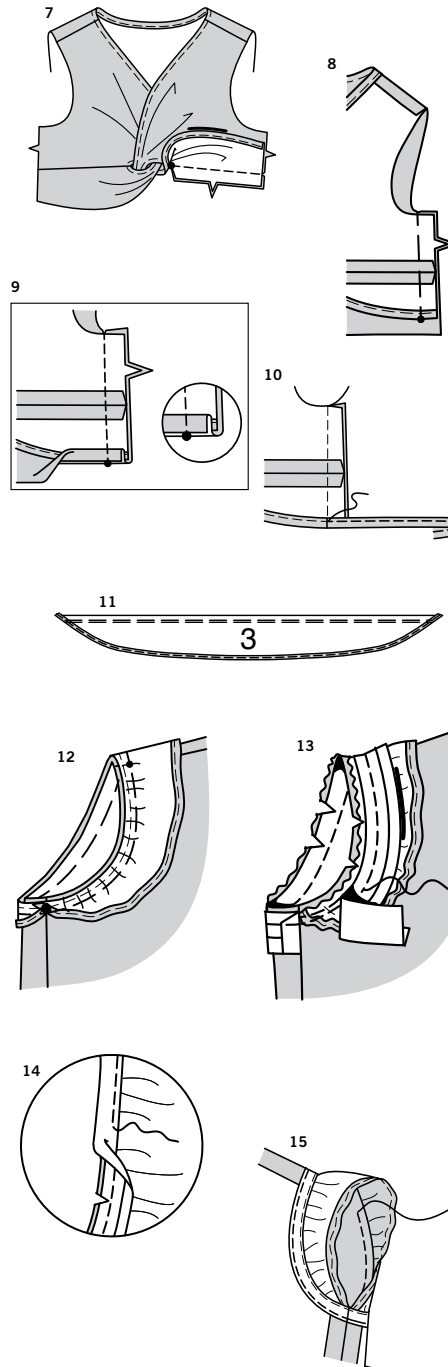
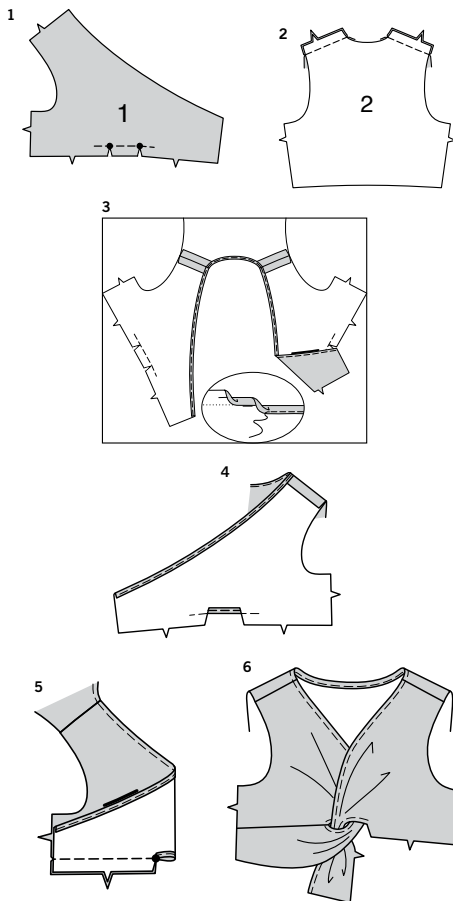
**2.** Stitch back (2) to front sections at shoulders.

**3. NARROW HEM** neck edge by pressing under 5/8" (1.5cm) hem, then turning under raw edge to meet crease.

**4. NARROW HEM** on each front between clips.

**5.** With **RIGHT** sides together, fold **RIGHT** front extension along center, matching notches and large dots, having raw edges even. Stitch raw edges together as far as large dot, back-stitching at large dot to reinforce seam.

**6.** With **RIGHT** sides facing up towards you, insert **LEFT** front extension through opening in **RIGHT** front.



**7.** Fold **LEFT** front along center, matching notches and large dots, having **RIGHT** sides together and raw edges even. Stitch seam to large dot same as for **RIGHT** front.

**8.** Baste fronts to back at sides, matching small dots.

**9.** Turn lower edge of back over hemmed edge of front at small dot, as shown. Turn inner raw edge back to meet small dot, as shown; pin. Stitch side seam.

**10.** Turn lower side edges of back to **INSIDE**, turning side seams toward back. **NARROW HEM** back, connecting to hem stitching on front sections.

**11. NARROW HEM** curved edge of armhole ruffle (3) sections. To **GATHER** straight edge of ruffle, stitch along 3/8" (1cm) seam line and 1/8" (3mm) away within seam allowance.

**12.** Pin ruffle to armhole edge, matching large dots, placing small dots at shoulder seams. Pull up gathers to fit; baste.

**13.** Open out one edge of single fold bias tape. With **RIGHT** sides together, pin tape to armhole edge having crease along 3/8" (1cm) seam line, turning under and lapping one end at side seam. Stitch. **TRIM** seam; clip curves.

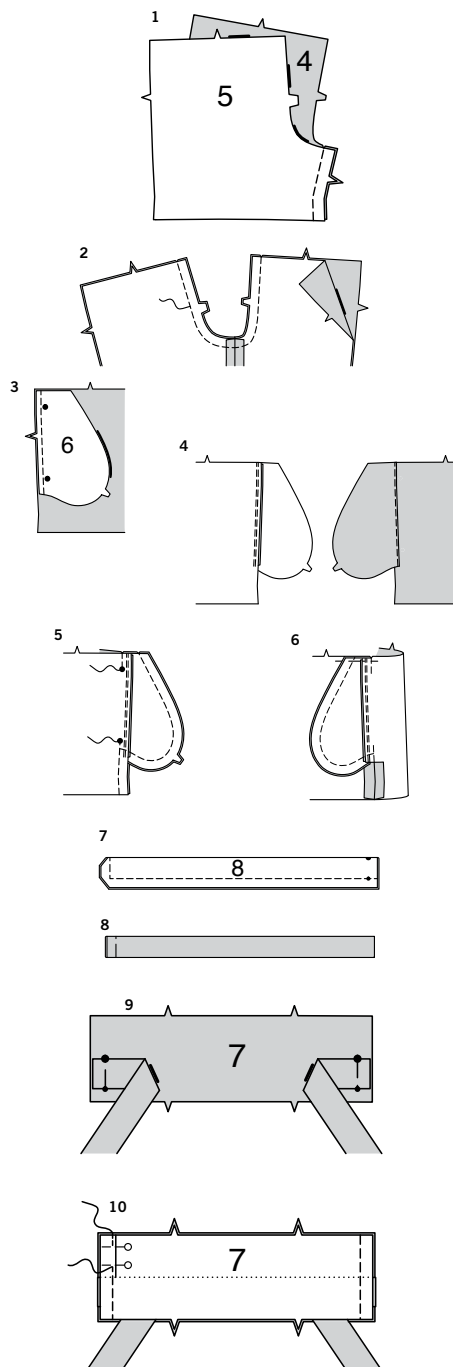
**14. UNDERSTITCH** by pressing tape and seam away from top, stitching through tape and seam allowances close to seam.

**15.** Turn tape to **INSIDE**; press. Baste close to inner edge of tape. On **OUTSIDE**, top-stitch as basted.

S9961

3 of 4

## SHORTS B OR PANTS C



1. Stitch front (4) to back (5) at inner leg seams.

2. With RIGHT sides together, pin center seam, matching inner leg seams and notches. Stitch. **REINFORCE** seam over first stitching.

3. Apply pockets to side edges of front and back as follows: With RIGHT sides together, pin pocket (6) to shorts or pants, matching large dots and having raw edges even. Stitch in a 3/8" (1cm) seam.

4. Press seam toward pocket, pressing pocket out. **UNDERSTITCH** front pocket by stitching through pocket and seam allowances close to seam.

5. Pin front to back at sides, matching large dots. Stitch side seams, leaving an opening between large dots; back-stitch at large dots to reinforce seam. Stitch pocket edges together from side seam to upper edge.

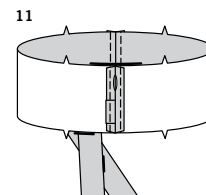
6. Clip pants back seam allowance at end of pocket. Press seam open below clip. Press pocket toward front. Baste 1/4" (6mm) from upper edge of pocket.

7. **FOR VIEW B TIE** - Fold tie end (8) in half lengthwise, with RIGHT sides together. Stitch raw edges, leaving end with small and large dots open. **TRIM** seam and corners.

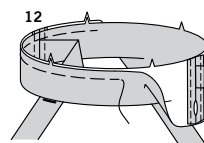
8. Turn tie RIGHT side out; press. Baste raw edges.

9. On OUTSIDE, baste ties to ends of one casing (7) section, matching small and large dots. The section with the ties is the back section.

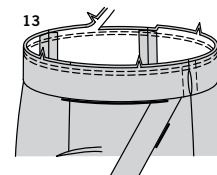
10. **FOR VIEWS B, C** - Pin casing sections together at sides. Using pins, mark a 1-1/4" (3.2cm) wide opening on LEFT side seam to insert elastic, centering it between foldline and seam line, as shown. Stitch side seams, leaving an opening on LEFT side seam between pins. Back-stitch at each end of opening to reinforce seam.



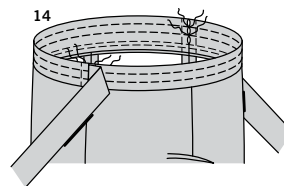
11. Press seams open, pressing under along seam line on opening edges. On OUTSIDE, stitch 3/8" (1cm) on each side of seam through all thicknesses.



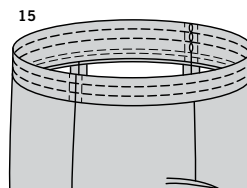
12. Fold casing in half, lengthwise, with WRONG sides together, having raw edges even. Baste raw edges together. The side with the opening is the underside of the casing.



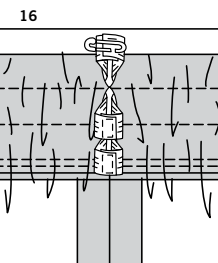
13. With the underside of casing facing you, pin casing to pants matching side seams, centers front and back. Stitch along seam line. Stitch again 1/4" (6mm) from first stitching within seam allowance. Trim close to second stitching.



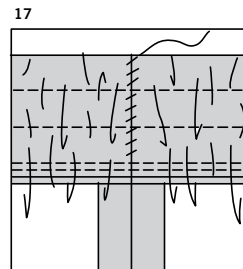
14. **FOR VIEW B** - To form three separate casings, stitch along stitching lines breaking and reinforcing stitching at side seams, keeping ties free.



15. **FOR VIEW C** - To form three separate casings, stitch along stitching lines.

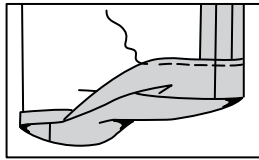


16. **FOR VIEWS B, C** - Cut three pieces of elastic each the length of elastic guide for casing (9). Insert elastic through opening in each casing, working elastic through all rows at same time. This eliminates that tug-of-war that you always have when trying to pull that last piece of elastic through an already bunched up casing. Overlap ends of ends of elastic; stitch securely together.



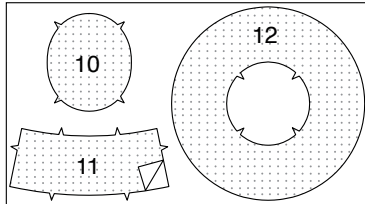
17. **SLIPSTITCH** opening edges of each casing together. Distribute fullness evenly. **TIP**-To secure elastic so it won't twist in wearing, **STITCH IN THE DITCH** or "groove" of each seam, stitching through all thicknesses.

18



18. Press up 1-1/4" (3.2cm) hem.  
Press under 1/4" (6mm) on raw edge.  
Stitch close to inner pressed edge.

1

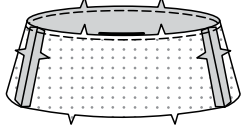


## HAT D

**NOTE:** The hat is stitched in 3/8" (1cm) seams.

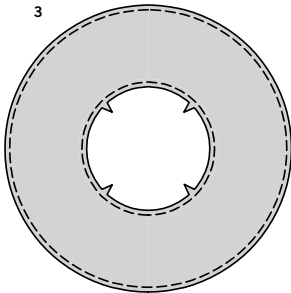
1. Apply interfacing to WRONG side of top (10) and crown (11), and brim (12) fabric sections, following manufacturer's directions. Do not interface lining sections.

2



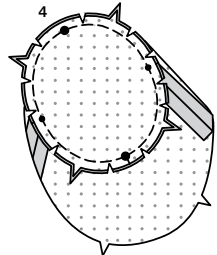
2. Stitch crown sections together at sides. Machine stitch upper edge of crown 1/4" (6mm) from raw edge.

3



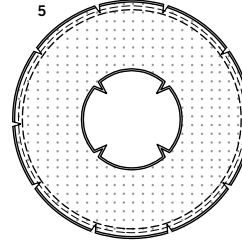
3. Machine stitch inner and outer edges of brim 1/4" (6mm) from raw edge.

4



4. Pin top to upper edge of crown, matching notches and large dots, placing seams at small dots. Clip crown to stitching along curves where necessary. Stitch.  
Press seam toward crown.

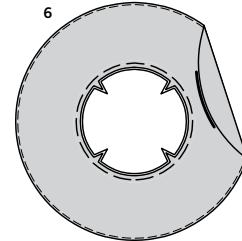
5



**NOTE:** You have cut out two brim sections. One section will be used as the brim. The other section will be used as the facing and will be **UNDERSTITCHED**.

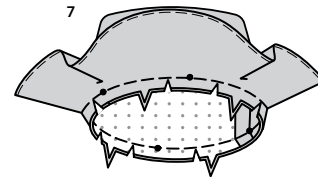
5. With **RIGHT** sides together, pin facing to brim along outer edges, matching centers. Stitch.  
**TRIM** seam; clip curves.

6



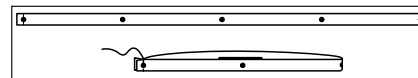
6. Turn brim **RIGHT** side out; press.  
**UNDERSTITCH** by pressing facing and seam away from brim, stitching through facing and seam allowances close to seam.  
Baste raw edges together.  
**TIP** - You can eliminate understitching if you plan on turning up the brim when wearing.

7



7. On **OUTSIDE**, pin brim (brim side) to hat crown, matching notches and small dots at centers, placing remaining small dots at seams. Clip curves to machine-stitching where necessary. Baste 1/4" (6mm) from raw edges.

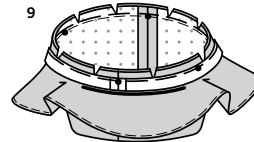
8



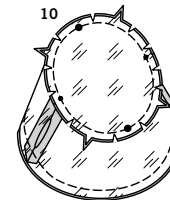
**NOTE:** The crown is supported with ribbon.

8. Cut one piece of ribbon the length of finished crown along lower seam line, plus 3/8" (1cm) on each end for seam allowance. Mark center back seam with a small dot on each end of ribbon 3/8" (1cm) away from raw edge. Mark a small dot for center front halfway between end dots. Make two more small dots, each one halfway between center front and back. Stitch ends of ribbon together at center back seam.

9

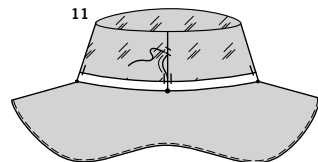


10



9. Turn brim down over hat, exposing seam.  
Pin ribbon over brim facing, having upper edge of ribbon just above seam line, matching small dots at centers front and back, placing remaining small dots at side seams.  
Baste along seam line, just catching in ribbon.
10. Stitch seams of hat lining same as for hat, leaving an opening in one seam for turning.  
With **RIGHT** sides together, pin lining to hat (over brim), matching seams and having raw edges even. Stitch along basting.

11



11. Turn hat **RIGHT** side out through opening in lining; press.  
Press ribbon up over crown.  
On **INSIDE**, **SLIPSTITCH** opening closed.  
Pin free edge of ribbon to lining. **HAND-TACK** to lining at centers and side seams, being careful not catch in hat.



# Congrats!

You've completed your sewing adventure

---

## SHARE YOUR LOOK



Post your pattern and tag us  
**@simplicity\_creative\_group** and **#simplicitypatterns**  
for a chance to be featured on our social media.

Look for more PDF patterns at [simplicity.com](https://www.simplicity.com)

Have a question or need help with your sewing project call us at  
1-888-588-2700



Simplicity ©2024 a division of IG Design Group Americas Inc. • Atlanta, GA 30342 USA [www.thedesigngroup.com](https://www.thedesigngroup.com) • All Rights Reserved. [www.simplicity.com](https://www.simplicity.com) • Made in the U.S.A. Fabriqué aux États-Unis.

To be used for individual private home use only and not for commercial or manufacturing purposes. • A usage privé seulement et non à des fins commerciales ou de production en série. • Para uso privado solamente, no se puede utilizar con propósitos de comercialización o de producción en serie.