

S9960

Simplicity®

easy-to-sew



A



B



D



Designed and printed in USA.



A,B,C

Easy

Facile

MEN'S KNIT T-SHIRT, SHIRT AND SHORTS

Suggested Fabrics: A: Stretch Knits only such as Interlock, Jersey, Lycra Blends. See Pick-A-Knit® Rule. B,C,D: Cotton Types, Lightweight Denim, Poplin, Rayons, Seersucker, Twill. **Interfacing B,C:** Lightweight Fusible.

Notions: B: Four ¾" (1.5cm) buttons. C,D: 1½ yds. (1.4m) of 1" (2.5cm) elastic.

Sizes	34	36	38	40	42	44	46	48	50	52
European	44	46	48	50	52	54	56	58	60	62

BODY MEASUREMENTS: Select pattern size based on body measurements

Chest	34	36	38	40	42	44	46	48	50	52	Ins.
Waist	28	30	32	34	36	39	42	44	46	48	"
Hip	35	37	39	41	43	45	47	49	51	53	"
Neckband	14	14½	15	15½	16	16½	17	17½	18	18½	"

T-Shirt A	60**	1¼	1¼	1¼	1¼	1¼	1¼	1¼	1¼	1¼	Yds.
-----------	------	----	----	----	----	----	----	----	----	----	------

Shirt B	45**	2¼	2¼	2¼	2¼	2¼	2¼	2¼	2¼	2¼	Yds.
60**	1½	1½	1½	1½	1½	1½	2	2	2	2	"

Interfacing 20" - 1¼ yds.

Shorts C	45**	1¼	1¼	1¼	2	2	2	2¼	2¼	2¼	Yds.
60**	1¼	1¼	1¼	1½	1½	1½	1¼	1¼	1¼	1¼	"

Interfacing 20" - ¼ yd.

Shorts D	45**	1¼	1¼	1¼	1¼	1¼	2	2	2	2¼	Yds.
60**	1¼	1¼	1¼	1½	1½	1½	1¼	1¼	1¼	1¼	"

FINISHED GARMENT MEASUREMENTS (Includes Design and Wearing Ease)

A Chest	38	40	42	44	46	48	50	52	54	56	Ins.
B Chest	41	43	45	47	49	51	53	55	57	59	"
A Waist	37	39	41	43	45	47	49	51	53	55	"
B Waist	41	43	45	47	49	51	53	55	57	59	"
C,D Hip	39	41	43	45	47	49	51	53	55	57	"

Width, lower edge

T-Shirt A	37	39	41	43	45	47	49	51	53	55	Ins.
Shirt B	39	41	43	45	47	49	51	53	55	57	"

Width, each leg

Shorts C,D	20¼	21¼	22¼	24	25¼	26¼	27¼	29	30¼	31¼	Ins.
------------	-----	-----	-----	----	-----	-----	-----	----	-----	-----	------

Finished back length from base of neck

T-Shirt A	24¼	25	25¼	25¼	25¼	26	26¼	26¼	26¼	27	Ins.
Shirt B	27¼	28	28¼	28¼	28¼	29	29¼	29¼	29¼	30	"

Finished side length from waist

Shorts C,D	21¼	21¼	21¼	22	22¼	22¼	22¼	23	23¼	23¼	Ins.
------------	-----	-----	-----	----	-----	-----	-----	----	-----	-----	------

*with nap **without nap

T-CHEMISE, CHEMISE ET SHORT POUR HOMMES

Tissus Conseillés: A: Tricot extensible seulement tels que Interlock, Jersey, Mélanges de lycra. Reportez-vous à la règle Pick-A-Knit®. B,C,D: Cottonnades, Denim léger, Popline, Rayonne, Seersucker, Twill. **Entoilage B,C:** Thermocollant léger.

Mercerie: B: 4 boutons de 1.5cm. C,D: 1.4m d'élastique de 2.5cm.

Tailles	34	36	38	40	42	44	46	48	50	52
Françaises/Eur	44	46	48	50	52	54	56	58	60	62

MESURES DU CORPS: Choisissez la taille du patron basée sur les mesures du corps

Poitrine	87	92	97	102	107	112	117	122	127	132	cm
Taille	71	76	81	87	92	99	107	112	117	122	"
Hanches	89	94	99	104	109	114	119	124	130	135	"
Bande du Col	35.5	37	38	39.5	40.5	42	43	44.5	45.5	47	"

T-Chemise A 150cm*	1.1	1.1	1.1	1.1	1.1	1.1	1.1	1.3	1.3	1.3	m
--------------------	-----	-----	-----	-----	-----	-----	-----	-----	-----	-----	---

Chemise B 115cm*	1.9	2.1	2.1	2.1	2.2	2.3	2.3	2.4	2.4	2.4	m
150cm*	1.4	1.4	1.5	1.5	1.5	1.5	1.8	1.8	1.8	1.8	"

Entoilage 51cm - 0.9m

Short C 115cm*	1.7	1.7	1.7	1.7	1.7	1.7	1.9	1.9	1.9	2.1	m
150cm*	1.3	1.3	1.3	1.3	1.4	1.4	1.5	1.5	1.5	1.5	"

Entoilage 51cm - 0.2m

Short D 115cm*	1.6	1.6	1.6	1.6	1.7	1.7	1.8	1.8	1.8	1.9	m
150cm*	1.3	1.3	1.3	1.3	1.4	1.4	1.4	1.4	1.5	1.5	"

MESURES DES VÊTEMENTS FINI (Motif et aisance de port compris)

A Poitrine	97	102	107	112	117	122	127	132	137	142	cm
B Poitrine	104	109	114	119	124	130	135	140	145	150	"
A Taille	94	99	104	109	114	119	124	130	135	140	"
B Taille	104	109	114	119	124	130	135	140	145	150	"
C,D Hanches	99	104	109	114	119	124	130	135	140	145	"

Largeur à l'ourlet

T-Chemise A	94	99	104	109	114	119	124	130	135	140	cm
Chemise B	99	104	109	114	119	124	130	135	140	145	"

Largeur, chaque jambe

Short C,D	51	55	58	61	64	67	70	74	77	80	cm
-----------	----	----	----	----	----	----	----	----	----	----	----

Longueur finie - dos, votre nuque à l'ourlet

T-Chemise A	63	64	64	65	65	66	67	67	68	69	cm
Chemise B	70	71	72	72	73	74	74	75	76	76	"

Longueur finie - côté, taille à l'ourlet

Short C,D	54	55	55	56	57	58	58	59	59	60	cm
-----------	----	----	----	----	----	----	----	----	----	----	----

*avec sens **sans sens



A



B



C



D

Use the 1 inch (2.54cm) box to ensure you are using rule at 100%

Utilisez la boîte de 2.54 cm pour vous assurer d'utiliser la règle à 100%.

Utilizar un cuadrado de 2.54 cm para asegurarse de estar usando la regla al 100%.

PICK-A-KNIT® RULE

FOR THIS PATTERN - 4" (10 cm) OF KNIT FABRIC MUST STRETCH CROSSWISE FROM HERE
POUR CE PATRON - LE JERSEY DOIT S'ETIRER DANS LA LARGEUR DE 4" (10 cm) DEPUIS ICI
PARA ESTE PATRON - LAS MALLAS DEBEN ESTIRARSE A LO ANCHO POR 4" (10 cm) DESDE AQUI



TO HERE 50%
JUSQUE LA 50%
HASTA ALLA 50%



When using the Pick-A-Knit® rule to measure your fabrics stretch capacity, rule must be viewed or printed at 100%.

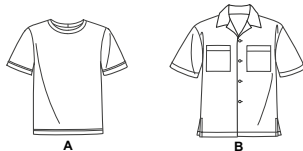
Quand vous utilisez la règle Pick-A-Knit® pour mesurer la capacité d'élasticité des tissus, la règle doit être visible ou imprimée à 100%.

Al utilizar la regla Pick-A-Knit® para medir la capacidad de elasticidad de las telas, la regla debe estar visible o impresa al 100%.

Simplicity®

Thank you for purchasing this Simplicity pattern.
We made every effort to provide you with a high quality product.

FRONT



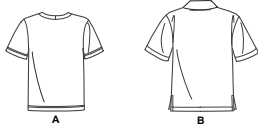
A

B

C

D

BACK



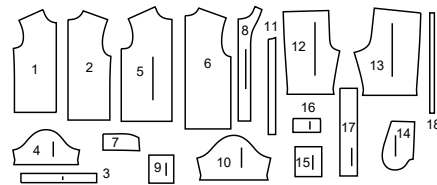
A

B

C

D

18 PIECES



- 1 Front-A
- 2 Back-A
- 3 Neckband-A
- 4 Sleeve-A
- 5 Front-B
- 6 Back-B
- 7 Collar-B
- 8 Front Facing-B
- 9 Pocket-B
- 10 Sleeve-B
- 11 Guide for Buttonholes-B
- 12 Front-C,D
- 13 Back-C,D
- 14 Pocket-C,D
- 15 Lower Pocket-C
- 16 Flap-C
- 17 Casing-C,D
- 18 Guide for Elastic-C,D



www.simplicity.com



info@simplicity.com



1-888-588-2700

General Directions

The Pattern

- SYMBOLS**
- ↔ GRAIN LINE Place on straight grain of fabric parallel to selvage
 - ↓ PLACE SOLID LINE on fold of fabric.
 - CENTER FRONT OR BACK of garment.
 - ▽ NOTCHES
 - DOTS
 - CUTTING LINE
 - == LENGTHEN OR SHORTEN LINES

SEAM ALLOWANCE: 5/8" (1.5cm) unless otherwise stated is included but not printed on MULTI-SIZE PATTERNS. Mark your size with colored felt tip pen. See chart on tissue for how to use MULTI-SIZE PATTERNS.

ADJUST IF NEEDED

Make adjustments before placing pattern on fabric.

TO LENGTHEN:
Cut pattern between lengthen or shorten lines. Spread pattern evenly, the amount needed and tape to paper.

TO SHORTEN:
At lengthen or shorten lines, make an even pleat taking up amount needed. Tape in place.

When lengthen or shorten lines are not given, make adjustments at lower edge of pattern.

Cutting/Marking

BEFORE CUTTING:

PRESS pattern pieces with a warm dry iron. PRE-SHRINK fabric by pre-washing washables or steam-pressing non-washables.

CIRCLE your cutting layout.

PIN pattern to fabric as shown in Cutting Layouts.

• FOR DOUBLE THICKNESS: Fold fabric with RIGHT sides together.

• FOR SINGLE THICKNESS: Place fabric RIGHT side up.

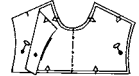
• FOR PILE, SHADED OR ONE WAY DESIGN FABRICS: Use "with nap" layouts

AFTER CUTTING:

Transfer markings to WRONG side of fabric before removing pattern. Use pin and chalk method or dressmaker's tracing paper and wheel.

To Quick Mark:

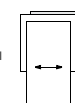
- Snip edge of fabric to mark notches, ends of fold lines and center lines.
- Pin mark dots.



SPECIAL CUTTING NOTES

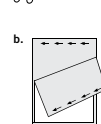
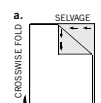
★ If layout shows a piece extending past fold, cut out all pieces except piece that extends.

Open out fabric to single thickness. Cut extending piece on RIGHT side of fabric in position shown.

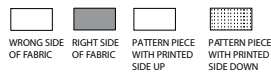


✱ Mark small arrows along both selvages indicating direction of nap or design. Fold fabric crosswise with RIGHT sides together, and cut along fold (a).

Turn one fabric layer around so arrows on both layers go in the same direction. Place RIGHT sides together (b).



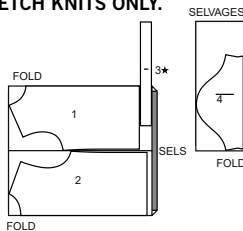
Cutting Layouts



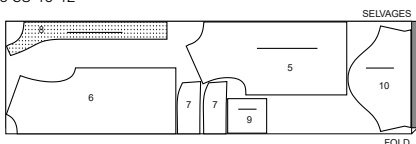
POSITION OF PATTERN PIECES MAY VARY SLIGHTLY ACCORDING TO YOUR PATTERN SIZE

T-SHIRT A - SIZED FOR STRETCH KNITS ONLY.
USE PIECES 1 2 3 4

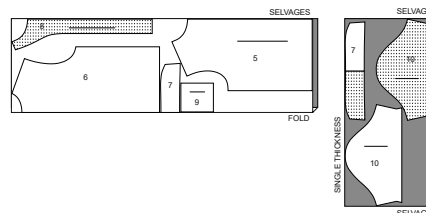
60" (150CM)
WITH NAP
ALL SIZES

SHIRT B
USE PIECES 5 6 7 8 9 10

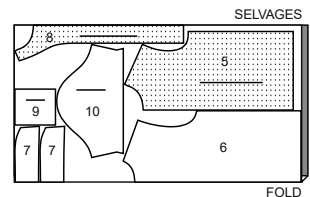
45" (115CM)
WITH NAP
SIZES 34 36 38 40 42



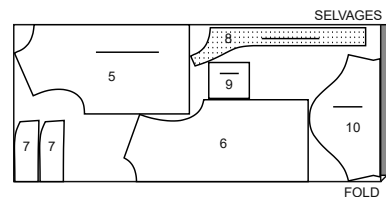
45" (115CM)
WITH NAP
SIZES 44 46 48 50 52



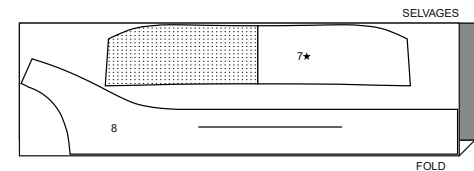
60" (150CM)
WITH NAP
SIZES 34 36 38 40 42 44



60" (150CM)
WITH NAP
SIZES 46 48 50 52

INTERFACING B
PIECES 7 8

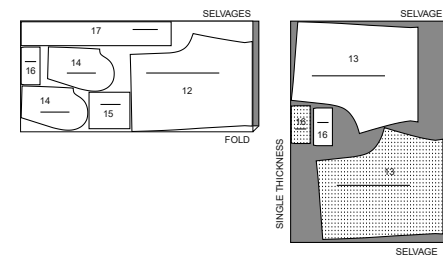
20" (51CM)
ALL SIZES

SHORTS C
PIECES 12 13 14 15 16 17

45" (115CM)
WITH NAP
SIZES 34 36 38 40 42 44



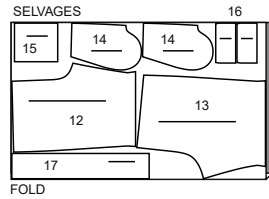
45" (115CM)
WITH NAP
SIZES 46 48 50 52



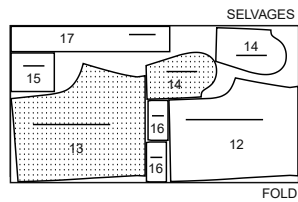
S9960

2 of 4

60" (150CM)
WITH NAP
SIZES 34 36 38 40 42 44

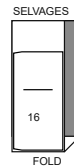


60" (150CM)
WITH NAP
SIZES 46 48 50 52



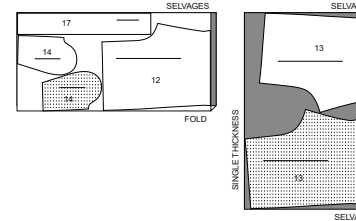
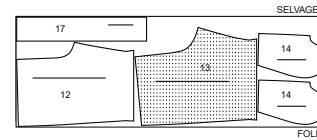
INTERFACING C
PIECE 16

20" (51CM)
ALL SIZES



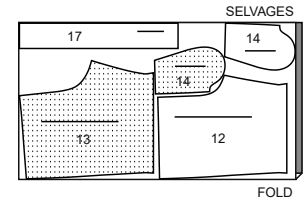
SHORTS D
PIECES 12 13 14 17

45" (115CM)
WITH NAP
SIZES 34 36 38 40 42 44



45" (115CM)
WITH NAP
SIZES 46 48 50 52

60" (150CM)
WITH NAP
ALL SIZES



Sewing Directions

FABRIC KEY

Read **General Directions** on page 1 before you begin.

GLOSSARY OF SEWING METHODS

Sewing methods shown in **ITALICS** are defined below:

DOUBLE - STITCH - Stitch seam along seamline; stitch again 1/4" (6mm) away in seam allowance using a straight stitch OR zigzag stitch; trim close to second stitching OR overlock seam.

EASE/GATHER - Loosen needle tension slightly. With **RIGHT** side up, stitch 5/8" (1.5cm) from cut edge using a long stitch. Stitch again 1/4" (6mm) from the first stitching within the seam allowance.

EDGE FINISH - Stitch 1/4" (6mm) from edge, turn under edge along stitching and stitch or zig-zag, or overlock/serge raw edges.

EDGE STITCH - Stitch close to finished edge or seam.

INTERFACING - Pin interfacing to **WRONG** side of fabric. Fuse interfacing in place following manufacturer's directions.

REINFORCE - Stitch along seamline where indicated in sewing instructions, using small machine stitches.

SLIPSTITCH - Slide needle through a folded edge, then pick up a thread of under-neath fabric.

STAY-STITCH - Stitch 1/2" (1.3cm) from cut edge in direction of arrows. This stitching stays in permanently to prevent stretching on curved edges. (Shown only in the first illustration.)

TOPSTITCH - On outside, stitch 1/4" (6mm) from edge, seam or previous stitching, using presser foot as guide, or stitch where indicated in instructions.

UNDERSTITCH - Press facing and seam away from garment, stitching through facing and seam allowances close to seam.

T-SHIRT A

NOTE: For knit fabrics stay-stitching is optional.

SIMPLY THE BEST TECHNIQUES FOR SEWING KNITS

FOR KNITS

- Use a ball point or stretch needle.

- Narrow zig-zag stitch or a stretch stitch.

- To prevent shoulder seams from stretching, pin center of hem tape, clear elastic or twill tape along seam line on front shoulder edges, then stitch the shoulder seams.

FOR OVERLOCK/SERGER

- The Overlock/Serger can be used alone or as a supplement to your conventional sewing machine.

- Overlock sewing machines stitch, trim and finish all in one operation. Therefore, it is VERY important to Check Fit before stitching seams.

- Using matching color thread, baste seams and try garment on. If no adjustments are needed, overlock seams along basting.

- The three thread overlock is ideal for major seams such as shoulder, side, underarm and sleeve seams.

- For stress areas such as crotch seams and armholes, the four thread overlock/safety stitch is best...OR, use a three thread overlock, and stitch along seam with a conventional machine to reinforce.

- The two or three thread overlock stitch is a perfect finish for edges of facings, hems and seam allowances.

FRONT AND BACK

1. **STAYSTITCH** neck edge of FRONT (1).

2. **STAYSTITCH** neck edge of BACK (2).

3. Stitch bodice front to bodice back at shoulders and sides in **DOUBLE-STITCHED** seams. Press seams toward back

4. Stitch ends of **NECK BAND** (3) together. With **WRONG** sides together, fold neck band in half lengthwise, matching notches and small dots. Pin raw edges together.

5. On **OUTSIDE**, pin band to neck edge, matching centers and notches, having raw edges even, placing small dots at shoulder seams. Clip to stay-stitching if necessary. Stitch, stretching band to fit. Press seam toward top, pressing band out.

6. **EDGE STITCH** shirt neck edge.

SLEEVE AND FINISHING

7. Stitch **SLEEVE** (4) seam in a **DOUBLE-STITCHED** seam. Press seam toward back.

8. Turn up 1 1/4" (3.2cm) hem on lower edge of sleeve. Turn under 1/4" (6mm) on raw edge of hem; press. Baste close to inner edge of hem.

9. On **OUTSIDE**, stitch along basting. Stitch again 1/4" (6mm) away within hem allowance.

SEWING TUTORIALS

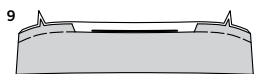
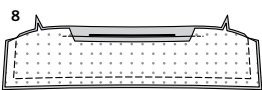
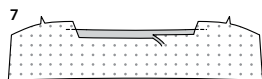
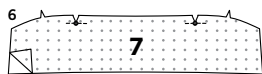
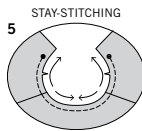
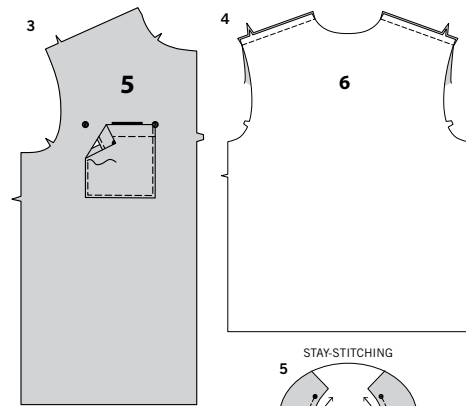
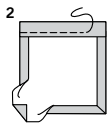
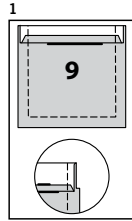
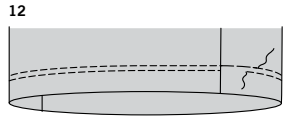
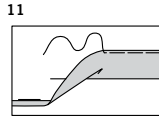
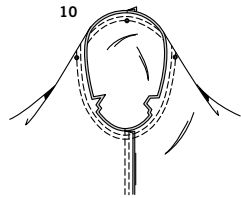


SCAN ME

Build your skills viewing short, easy-to-follow videos at
simplicity.com/sewingtutorials

S9960

3 of 4



10. With RIGHT sides together, pin sleeve to shirt at armhole edge, placing center small dot at shoulder seam, matching remaining small dots. Stitch. Stitch again 1/4" (6mm) away in seam allowance. Trim close to stitching. Press seam allowances flat. Turn seam toward sleeve.

11. Turn up 1 1/4" (3.2cm) hem on lower edge of shirt. Turn under 1/4" (6mm) on raw edge of hem; press. Baste close to inner edge of hem.

12. On OUTSIDE, stitch along basting. Stitch again 1/4" (6mm) away within hem allowance.

SHIRT B

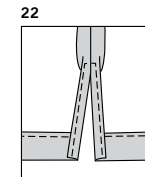
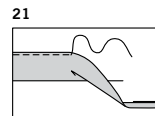
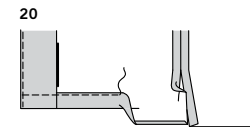
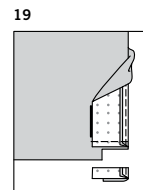
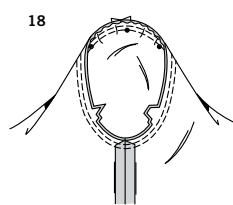
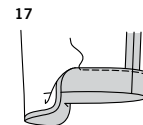
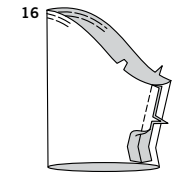
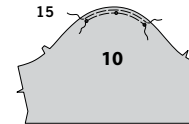
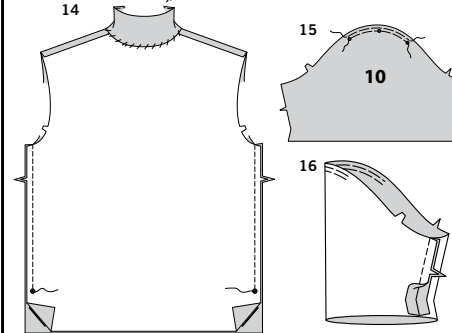
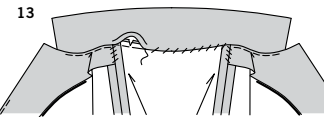
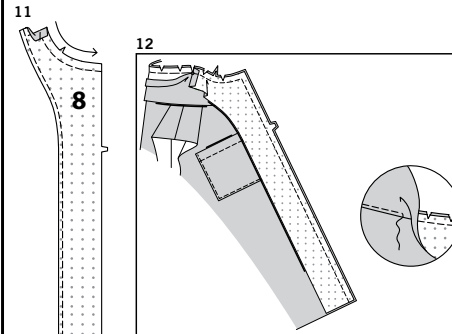
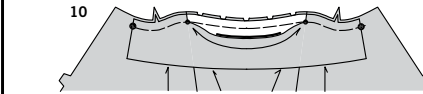
FRONT AND BACK

- Press under 1/4" (6mm) on upper edge of POCKET (9). Turn upper edge to OUTSIDE along fold line, forming facing. Stitch along seam line on raw edges. Trim seam allowance in the facing area to 1/4" (6mm).
- Turn corners RIGHT side out, turning facing to the WRONG side; press, pressing under raw edges along stitching, diagonally folding corners. Stitch facing close to inner edge.
- On OUTSIDE, pin pocket to front, matching large dots. **EDGE-STITCH** sides and lower edge.
- Stitch front to back at shoulders.

5. **STAYSTITCH** neck edge between large dots.

COLLAR AND FACING

- Apply **INTERFACING** to COLLAR (7). **REINFORCE** interfaced section through small dots, as shown. Clip to small dots. **NOTE:** Uninterfaced collar section will be used as facing.
- Press under seam allowance between clips. Trim pressed seam allowance to 3/8" (1cm).
- With RIGHT sides together, stitch collar sections together, leaving notched edge open. Trim seam and corners. **UNDERSTITCH** facing as far as possible.
- Turn RIGHT side out. Press. Baste raw edges together.



10. Pin collar to neck edge, facing side down, matching centers and placing small dots at shoulder seams, clipping neck edge where necessary. Baste, keeping pressed edge free.

11. Apply **INTERFACING** to FRONT FACING (8). **EDGE-FINISH** INNER unnotched edged of facing. **STAYSTITCH** neck edge. Press under seam allowance on shoulder edge.

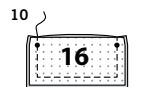
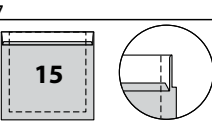
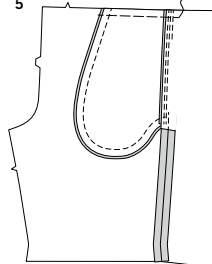
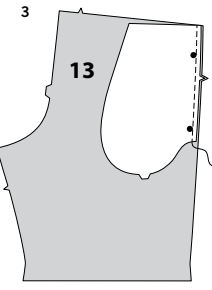
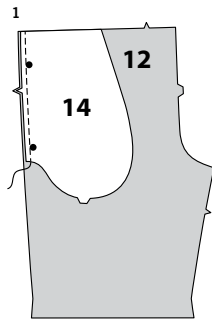
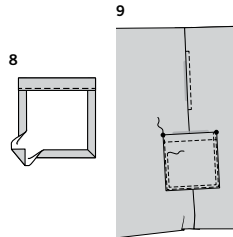
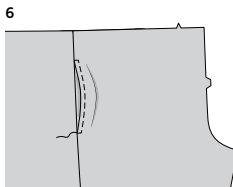
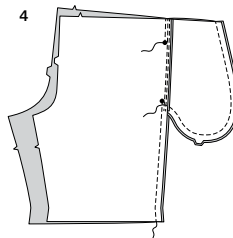
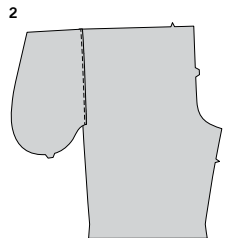
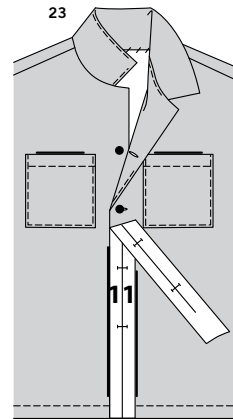
12. With RIGHT sides together, pin facings to fronts, over collar, matching large dots. Clip to stay-stitching if necessary. Stitch front and neck edges, keeping pressed edge of collar free. Clip neck seam allowances at ends of facing, as shown. **UNDERSTITCH** facing below double notch.

13. Turn facings to INSIDE. Press. Press back neck seam toward collar. **SLIPSTITCH** pressed edge of collar and facings over seams, as shown.

14. Stitch front to back at sides, leaving open below large dots.

SLEEVE AND FINISHING

- EASESTITCH** upper edge of SLEEVE (10) between outer small dots.
- Stitch sleeve seam.
- Turn up 1 1/4" (3.2cm) hem on lower edge of sleeve. Turn 1/4" (6mm) on raw edge of hem to wrong side; press. Stitch close to inner edge of hem.
- With RIGHT sides together, pin sleeve to shirt at armhole edge, placing center small dot at shoulder seam, matching remaining small dots. Stitch. Stitch again 1/4" (6mm) away in seam allowance. Trim close to stitching. Press seam allowances flat. Turn seam toward sleeve.
- Turn lower edge of facings to OUTSIDE along seam. Stitch along hem allowance across facing. Trim facing close to stitching, as shown.
- Turn facings to INSIDE; press, pressing up hem. Turn under 1/4" (6mm) on raw edge of hem; press. Stitch close to inner edge of hem, continuing stitching across facings.
- Turn up 1 1/4" (3.2cm) hem on lower back edge of shirt. Turn under 1/4" (6mm) on raw edge of hem; press. Stitch close to inner edge of hem.
- Make **NARROW HEM** at side opening edges, tapering to nothing above large dot, squaring stitching at opening.



23. Pin GUIDE FOR BUTTONHOLES (11) to LEFT front of shirt with top even with the neck seam, matching centers. Transfer buttonhole markings to shirt. Make buttonholes at markings. Lap LEFT front over RIGHT matching centers. Sew buttons under buttonholes.

SHORTS C, D

FRONT AND BACK

1. With RIGHT sides together, pin one POCKET (14) to each front, matching large dots, having raw edges even. Stitch in 3/8"(1cm) seam. **UNDERSTITCH** pocket.

2. Press seam toward pocket, pressing pocket out.

3. With RIGHT sides together, pin one remaining pocket to each back, matching large dots, having raw edges even. Stitch in 3/8"(1cm) seam.

4. Press seam toward pocket, pressing pocket out. Pin front to back at side seam, matching large dots. Stitch side seam, leaving an opening between large dots. Stitch pocket edges together to side seam.

5. Clip back seam allowance below pockets. Press seam open below clip. Press pocket toward front. Baste across upper edge.

6. **TOPSTITCH** front pocket opening, as shown, squaring stitching at upper and lower edges.

FOR VIEW C-

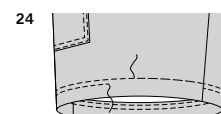
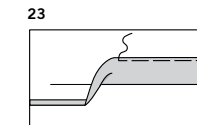
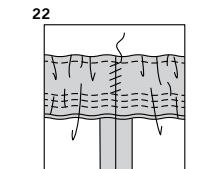
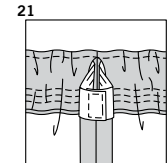
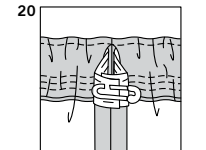
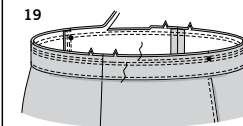
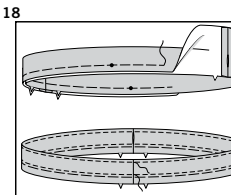
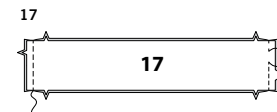
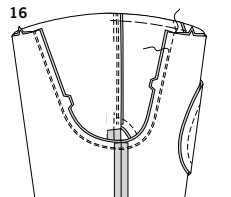
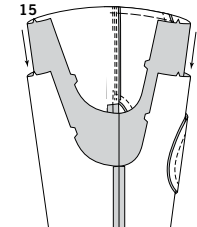
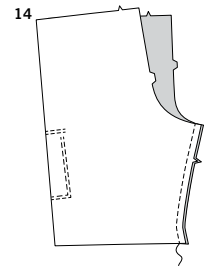
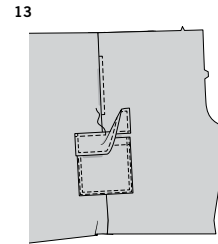
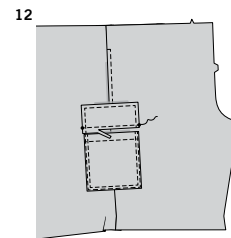
7. Press under 1/4"(6mm) on upper edge of LOWER POCKET (15). Turn upper edge to OUTSIDE along fold line, forming facing. Stitch along seam line on raw edges. Trim seam allowance in the facing area to 1/4"(6mm).

8. Turn corners RIGHT side out, turning facing to the WRONG side; press, pressing under raw edges along stitching, diagonally folding corners. Stitch facing close to inner edge.

9. On OUTSIDE, pin pocket to front and back, matching large dots. **EDGESTITCH** and **TOPSTITCH** sides and lower edge, being careful not to catch side pocket in stitching.

10. Apply **INTERFACING** to FLAP (16). For each side, with RIGHT sides together. Stitch one interfaced flap to one uninterfaced flap, leaving upper edge open, as shown. Trim seam. Clip corners.

11. Turn RIGHT side out. Press. Baste raw edges together. **TOPSTITCH** finished edges.



12. Pin flap to front and back, matching small dots, placing seamline along placement line. Stitch, being careful not to catch side pocket in stitching. Trim flap seam allowance to a scant 1/4" (6mm), being careful not to cut shorts.

13. Turn flap down. Press. **TOPSTITCH** upper edge of flap.

CONTINUE AS FOLLOWS FOR VIEWS C, D

14. Stitch front to back at inner leg seams.

15. With RIGHT sides together, insert one leg INSIDE the other.

16. With RIGHT sides together, pin center seam, matching inner leg seams and notches. Stitch. To reinforce seam, stitch again over first stitching.

FINISHING

17. Stitch CASING (17) sections together at center front and center back seams, leaving 1" (2.5cm) opening at center back between foldline and upper seamline, as shown.

18. With WRONG sides together, fold casing along foldline, matching notches and small dots. Baste raw edges together. Stitch along stitching lines. The side with the opening is the underside of the casing.

19. On OUTSIDE, with the underside of the casing facing you, pin casing to upper edge, matching centers and notches, having raw edges even, placing small dots at side seams. Stitch. Stitch again 1/4" (6mm) away in seam allowance. Trim close to stitching. Press seam toward shorts, pressing casing out.

20. Cut elastic the length of GUIDE FOR ELASTIC (18). Insert elastic through opening in casing. Overlap ends and hold with a safety pin.

21. Stitch ends of elastic together securely.

22. **SLIPSTITCH** opening. Distribute fullness evenly.

23. Turn up 1 1/2" (3.8cm) hem on lower edge of shorts. Turn under 1/4" (6mm) on raw edge of hem; press. Baste close to inner edge of hem.

24. On OUTSIDE, stitch along basting. Stitch again 1/4" (6mm) away within hem allowance.



Congrats!

You've completed your sewing adventure

SHARE YOUR LOOK



Post your pattern and tag us
@simplicity_creative_group and **#simplicitypatterns**
for a chance to be featured on our social media.

Look for more PDF patterns at [simplicity.com](https://www.simplicity.com)

Have a question or need help with your sewing project call us at
1-888-588-2700



Simplicity ©2024 a division of IG Design Group Americas Inc. • Atlanta, GA 30342 USA www.thedesigngroup.com • All Rights Reserved. www.simplicity.com • Made in the U.S.A. Fabriqué aux États-Unis.

To be used for individual private home use only and not for commercial or manufacturing purposes. • A usage privé seulement et non à des fins commerciales ou de production en série. • Para uso privado solamente, no se puede utilizar con propósitos de comercialización o de producción en serie.