

S9959

Simplicity



A



B

Designed and printed in USA.



Average

UNISEX CARGO PANTS

Suggested Fabrics: Cotton Blends, Lightweight Denim, Lightweight Stretch Wovens, Linen Blends, Ripstop Nylon. **Lining:** Cotton Blends, Polyester Blends. **Interfacing:** Lightweight Fusible.

Notions: A,B: 2 1/4 yds. (2.7m) of 3/8" (1cm) elastic, 3 3/4 yds. (3.4m) of 1/4" (6mm) elastic cording, six 3/8" (1.5cm) buttons, three barrel stops, six grommets with a 3/8" (1cm) opening.

Sizes	XS	S	M	L	XL	XXL
	30-32	34-36	38-40	42-44	46-48	50-52

BODY MEASUREMENTS: Select pattern size based on body measurements

	30-32	34-36	38-40	42-44	46-48	50-52	Ins.
Chest	30-32	34-36	38-40	42-44	46-48	50-52	Ins.
Waist	26-27	28-30	32-34	36-39	42-44	46-48	"
Hip	32-34	35-37	39-41	43-45	47-49	51-53	"

Lining A,B - 45*** - 1/2 yd.

Interfacing A,B - 20" - 3/8 yd.

	45**	2 1/4	2 1/4	2 1/4	2 1/4	2 1/4	2 1/4	Yds.
Pants A	45**	2 1/4	2 1/4	2 1/4	2 1/4	2 1/4	2 1/4	Yds.
	60**	1 1/4	1 1/4	1 1/4	1 1/4	1 1/4	1 1/4	"
Pants B	45**	2 1/4	2 1/4	2 1/4	2 1/4	3 1/4	3 1/4	Yds.
	60**	2 1/4	2 1/4	2 1/4	2 1/4	2 1/4	2 1/4	"

FINISHED GARMENT MEASUREMENTS (Includes Design and Wearing Ease)

A,B Hip	37 1/2	40	44	48	52	56	Ins.
Finished side length from waist							
Pants A (sit 2" below waist)	29	29 1/2	30	30 1/2	31	31 1/2	Ins.
Pants B (sit 2" below waist)	42	42 1/2	43	43 1/2	44	44 1/2	Ins.

*with nap **without nap

Moins Facile

PANTALONS CARGO POUR UNISEXE

Tissus Conseillés: Cotonnades, Denim léger, Tissus tissés extensibles légers, Lin mélangés, Nylon indéchirable. **Doublure:** Cotonnades, Mélanges de polyester.

Entoilage: Thermocollant léger.

Mercerie: A,B: 2.7m d'élastique de 1cm, 3.4m de cordon élastique de 6mm, 6 boutons de 1.5cm, 3 arrêts de cordon cylindre, 6 œillets avec ouverture de 1cm.

Tailles	TP/XS	P/S	M	G/L	TG/XL	TTG/XXL
Fr/ Eur	40-42	44-46	48-50	52-54	56-58	60-62

MESURES DU CORPS: Choisissez la taille du patron basée sur les mesures du corps

Poitrine	76-81	87-92	97-102	107-112	117-122	127-132	cm
Taille	66-69	71-76	81-87	92-99	107-112	117-122	"
Hanches	82-87	89-94	99-104	109-115	119-124	128-135	"

Doublure A,B - 115cm** - 0.5m

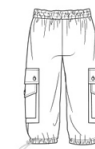
Entoilage A,B - 51cm - 0.3m

	115cm*	2.1	2.1	2.1	2.1	2.4	2.4	m
Pantalon A	115cm*	2.1	2.1	2.1	2.1	2.4	2.4	m
	150cm*	1.7	1.7	1.7	1.7	1.7	1.7	"
Pantalon B	115cm*	2.6	2.6	2.6	2.6	2.9	2.9	m
	150cm*	1.9	1.9	1.9	1.9	2.2	2.2	"

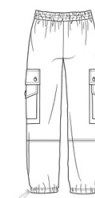
MESURES DES VÊTEMENTS FINI (Motif et aisance de port compris)

A,B Hanches	95	102	112	122	132	142	cm
Longueur finie – côté, taille à l'ourlet							
Pantalon A (repose 5cm dessous de la taille)	74	75	76	77	79	80	cm
Pantalon B (repose 5cm dessous de la taille)	107	108	109	110	112	113	cm

*avec sens **sans sens



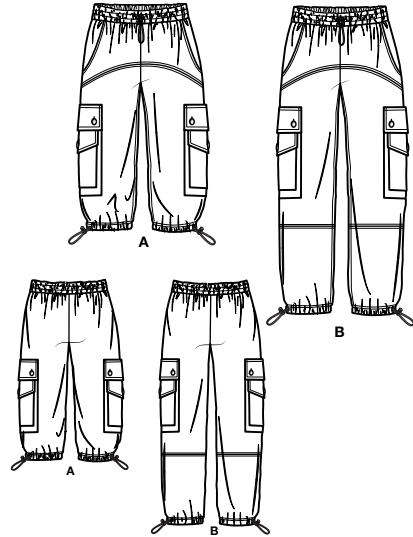
A



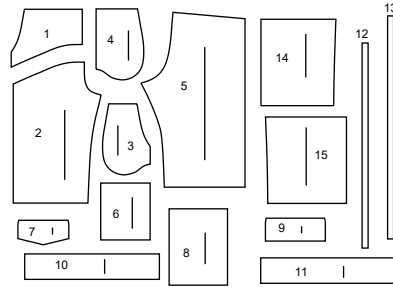
B

Simplicity

Thank you for purchasing this Simplicity pattern. We made every effort to provide you with a high quality product.



15 PIECES



- 1 Yoke Front-A,B
- 2 Front-A,B
- 3 Pocket Facing-A,B
- 4 Side Front and Pocket-A,B
- 5 Back-A,B
- 6 Upper Pocket-A,B
- 7 Upper Flap-A,B
- 8 Lower Pocket-A,B
- 9 Lower Flap-A,B
- 10 Front Casing-A,B
- 11 Back Casing-A,B
- 12 Elastic Guide Upper-A,B
- 13 Elastic Guide Lower-A,B
- 14 Lower Front-B
- 15 Lower Back-B

General Directions

The Pattern

SYMBOLS

- ↔ GRAIN LINE Place on straight grain of fabric parallel to selvage
- ⇄ PLACE SOLID LINE on fold of fabric.
- CENTER FRONT OR BACK of garment.
- ∩ NOTCHES
- ○ DOTS
- CUTTING LINE
- == LENGTHEN OR SHORTEN LINES

ADJUST IF NEEDED

Make adjustments before placing pattern on fabric.

TO LENGTHEN: Cut pattern between lengthen or shorten lines. Spread pattern evenly, the amount needed and tape to paper.

TO SHORTEN: At lengthen or shorten lines, make an even pleat taking up amount needed. Tape in place.

SEAM ALLOWANCE: 5/8" (1.5cm) unless otherwise stated is included but not printed on MULTI-SIZE PATTERNS. Mark your size with colored felt tip pen. See chart on tissue for how to use MULTI-SIZE PATTERNS.

Cutting/Marking

BEFORE CUTTING:

PRESS pattern pieces with a warm dry iron. PRE-SHRINK fabric by pre-washing washables or steam-pressing non-washables.

CIRCLE your cutting layout.

PIN pattern to fabric as shown in Cutting Layouts.

- FOR DOUBLE THICKNESS: Fold fabric with RIGHT sides together.
- FOR SINGLE THICKNESS: Place fabric RIGHT side up.
- FOR PILE, SHADED OR ONE WAY DESIGN FABRICS: Use "with nap" layouts

AFTER CUTTING:

Transfer markings to WRONG side of fabric before removing pattern. Use pin and chalk method or dressmaker's tracing paper and wheel.

To Quick Mark:

- Snip edge of fabric to mark notches, ends of fold lines and center lines.
- Pin mark dots.

Sewing

Sewing Directions.

- SEW garment following Sewing Directions.
- PIN or machine-baste seams matching notches.
- STITCH 5/8" (1.5 cm) seams unless otherwise stated.
- PRESS seams open unless otherwise indicated clipping when necessary so seams will lie flat.
- TRIM seams to reduce bulk, as shown below.

Trim enclosed seams into layers Trim corners Clip inner curves Notch outer curves

SPECIAL CUTTING NOTES

- ★ If layout shows a piece extending past fold, cut out all pieces except piece that extends.
- ✳ Mark small arrows along both selvages indicating direction of nap or design. Fold fabric crosswise with RIGHT sides together, and cut along fold (a).

Open out fabric to single thickness. Cut extending piece on RIGHT side of fabric in position shown.

Turn one fabric layer around so arrows on both layers go in the same direction. Place RIGHT sides together (b).

Cutting Layouts

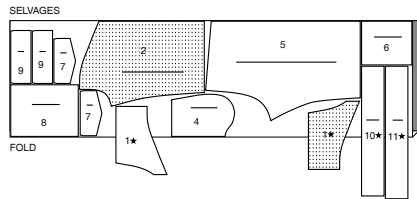
WRONG SIDE OF FABRIC RIGHT SIDE OF FABRIC PATTERN PIECE WITH PRINTED SIDE UP PATTERN PIECE WITH PRINTED SIDE DOWN ★ SEE SPECIAL CUTTING NOTES

POSITION OF PATTERN PIECES MAY VARY SLIGHTLY ACCORDING TO YOUR PATTERN SIZE

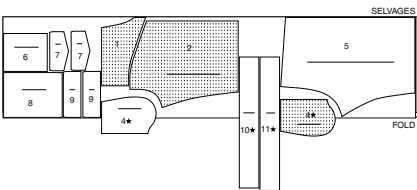
CROPPED CARGO PANTS A

USE PIECES 1 2 4 5 6 7 8 9 10 11

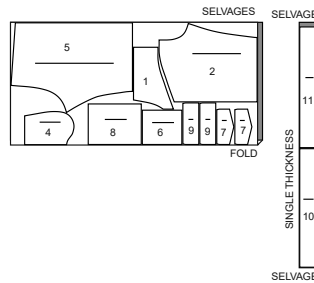
45" (115 CM) WITH NAP
SIZES XS S M L



45" (115 CM) WITH NAP
SIZES XL XXL



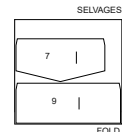
60" (150 CM) WITH NAP
ALL SIZES



INTERFACING A, B

USE PIECES 7 9

20" (51 CM) ALL SIZES



LINING A, B

USE PIECE 3

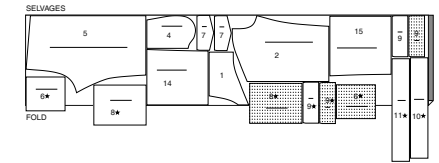
45" (115 CM) WITH NAP
ALL SIZES



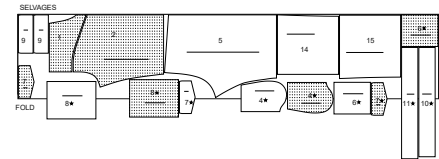
CROPPED CARGO PANTS B

USE PIECES 1 2 4 5 6 7 8 9 10 11 14 15

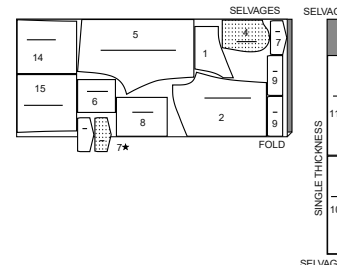
45" (115 CM) WITH NAP
SIZES XS S M L



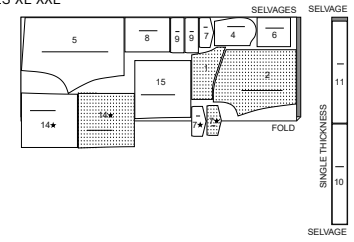
45" (115 CM) WITH NAP
SIZES XL XXL



60" (150 CM) WITH NAP
SIZES XS S M L

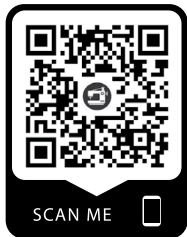


60" (150 CM) WITH NAP
SIZES XL XXL



CUTTING LAYOUTS CONTINUED ON PAGE 2

SEWING TUTORIALS



Build your skills viewing short, easy-to-follow videos at simplicity.com/sewingtutorials

Sewing Directions

FABRIC KEY RIGHT SIDE WRONG SIDE INTERFACING LINING LINING

Read **General Directions** on page 1 before you begin.

Sewing methods in **BOLD TYPE** have Sewing Tutorial Video available. Scan **QR CODE** to watch videos:

EDGESTITCH - see [how to edgestitch](#) video.

SLIPSTITCH - see [how to slip-stitch](#) video.

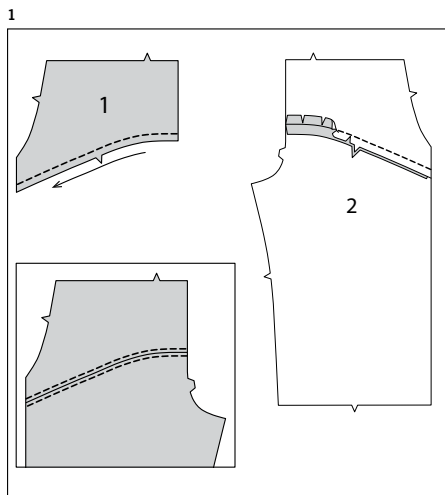
STAYSTITCH - see [how to do stay-stitching](#) video.

TOPSTITCH - see [how to topstitch](#) video.

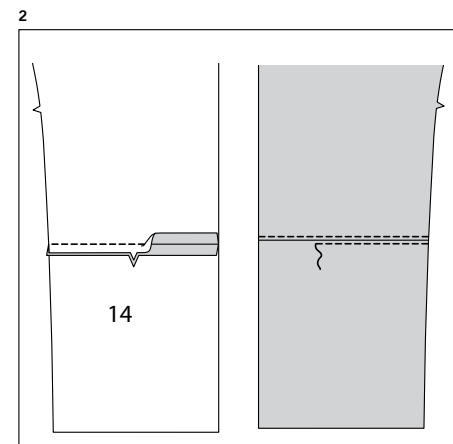
PANTS A, B

Pants sit 2" (5cm) below waist.

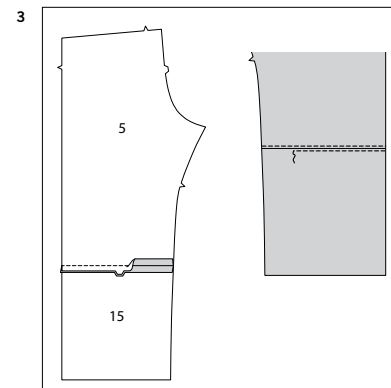
NOTE: *View A* will be shown unless otherwise indicated.



- 1. STAYSTITCH** lower edge of yoke front (1) in direction of arrows. With **RIGHT** sides together, pin yoke front to front (2) matching notches, clipping to stay-stitching if necessary. Baste. Stitch. Press seam open. On **OUTSIDE**, **TOPSTITCH** each side of seam.

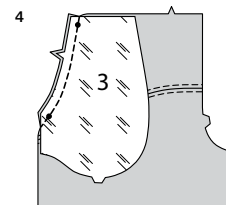


- 2. VIEW B** - With **RIGHT** sides together, stitch lower front (14) to lower edge of front sections matching notches. Press seam open. On **OUTSIDE**, **TOPSTITCH** each side of seam.

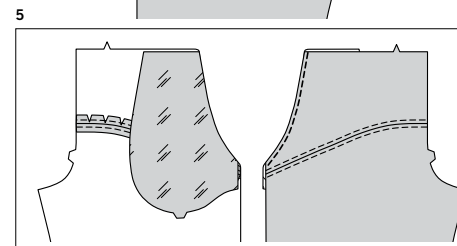


- 3.** For back sections, stitch lower back (15) to lower edge of back (5), matching notches. Stitch. Press seam open. On **OUTSIDE**, **TOPSTITCH** each side of seam.

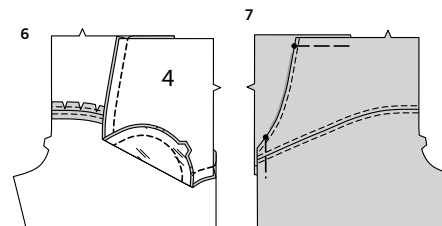
CONTINUE AS FOLLOWS FOR BOTH VIEWS



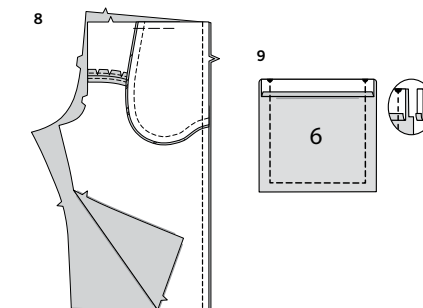
- 4.** With **RIGHT** sides together and raw edges even, pin pocket facing (3) to front, matching small dots. Stitch single notched edge. Trim seam.



- 5.** Turn facing to **INSIDE**; press. On **OUTSIDE**, **TOPSTITCH** finished edge.



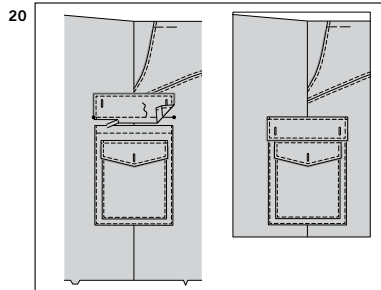
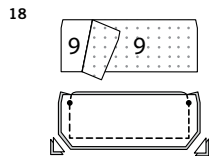
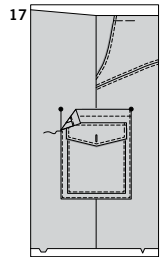
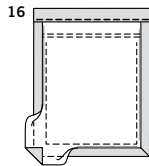
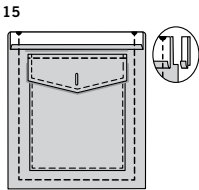
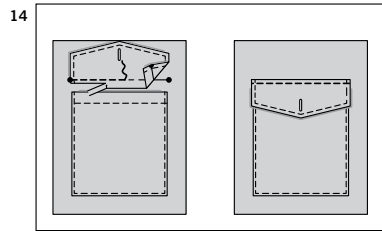
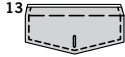
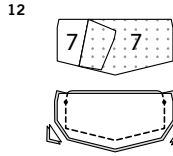
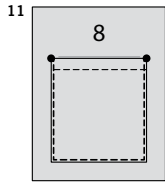
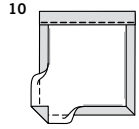
- 6.** On **INSIDE**, with **RIGHT** sides together, pin side front and pocket (4) section to pocket facing, having raw edges even. Stitch double notched edge, as shown.



- 7.** On **OUTSIDE**, lap garment front over side and pocket section, matching small dots, having raw edges even; pin. Baste side and upper edges together.

- 8.** With **RIGHT** sides together, stitch front to back at side seams.

- 9.** Press under 1/4" (6mm) on upper edge of upper pocket (6) Turn upper edge to **OUTSIDE** along fold line, forming facing. Stitch along seam line on raw edges. Trim seam allowance in the facing area to 1/4" (6mm).



10. Turn corners **RIGHT** side out, turning facing to the **WRONG** side; press, pressing under raw edges along stitching. Stitch facing close to inner edge.

11. On **OUTSIDE**, pin upper pocket to lower pocket (8) matching large dots. **EDGESTITCH** side and lower edges of upper pocket.

12. Apply fusible interfacing to **WRONG** side of upper flap (7), following manufacturer's directions. With **RIGHT** sides together, stitch facing to flap, leaving edge with small dots open. Trim seam and corners.

13. Turn flap; press. Machine-baste 5/8" (1.5cm) from raw edge. On **OUTSIDE**, **TOPSTITCH** finished edge. Make buttonholes in flap at marking.

14. On **OUTSIDE**, pin flap to lower pocket, placing basting along flap line, matching small dots, as shown. Stitch along basting. Trim close to stitching. Turn flap down; press. **TOPSTITCH** upper edge.

15. Press under 1/4" (6mm) on upper edge of lower pocket. Turn upper edge to **OUTSIDE** along fold line, forming facing. Stitch along seam line on raw edges. Trim seam allowance in the facing area to 1/4" (6mm).

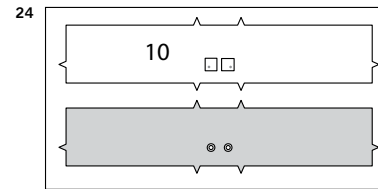
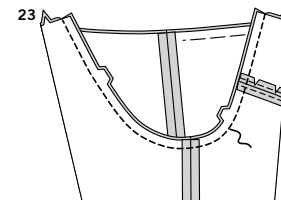
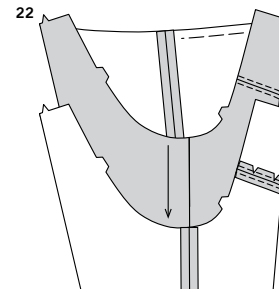
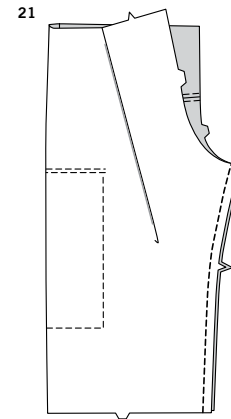
16. Turn corners of upper pocket **RIGHT** side out, turning facing to the **WRONG** side; press, pressing under raw edges along stitching. Stitch facing close to inner edge.

17. On **OUTSIDE**, pin lower pocket to side seams along pocket line matching large dots. **EDGESTITCH** side and lower edges of upper pocket.

18. Apply fusible interfacing to **WRONG** side of lower flap (9), following manufacturer's directions. With **RIGHT** sides together, stitch facing to flap, leaving edge with small dots open. Trim seam and corners.

19. Turn flap; press. Machine-baste 5/8" (1.5cm) from raw edge. On **OUTSIDE**, **TOPSTITCH** finished edge. Make buttonholes in flap at marking.

20. On **OUTSIDE**, pin flap to side edge of pants, placing basting along flap line, matching small dots, as shown. Stitch along basting. Trim close to stitching. Turn flap down; press. **TOPSTITCH** upper edge.



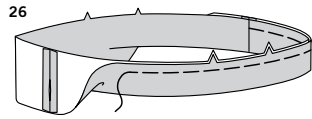
21. With **RIGHT** sides together, stitch front to back at inner leg seams. **OPTIONAL:** Press seam toward front. **TOPSTITCH** inner leg seams.

22. With **RIGHT** sides together, insert one leg **INSIDE** the other.

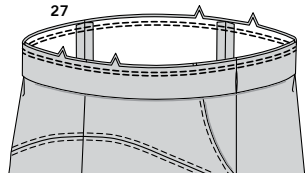
23. With **RIGHT** sides together, pin center seam, matching inner leg seams and notches. Stitch. To reinforce seam, stitch again over first stitching.

24. Reinforce front casing (10) at markings, using a piece of fusible interfacing. Apply grommets to front casing at markings, following manufacturer's directions.

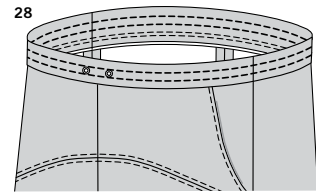
25. With **RIGHT** sides together, stitch front casing to back casing (11) at side seams, leaving an opening in **LEFT** side seam between small dots, as shown. Back-stitch at small dots to reinforce seam. Press seam open.



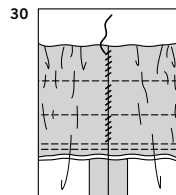
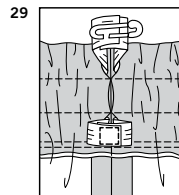
26. With WRONG sides together, fold casing in half lengthwise, along foldline, having raw edges even. Baste raw edges together.



27. The side with the opening is the underside of the casing. With the underside of casing facing you, pin casing to garment matching centers, and side seams. Stitch along seam line. Stitch again 1/4" (6mm) from first stitching within seam allowance. Trim close to second stitching.

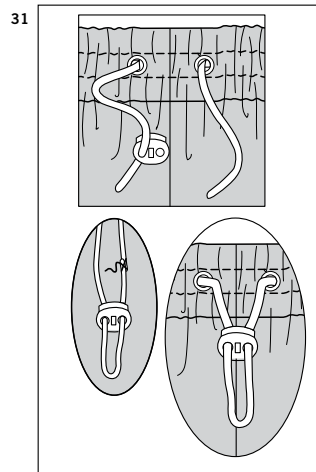


28. Press seam toward garment, pressing casing out. To form three separate casings, stitch along stitching lines, as shown.

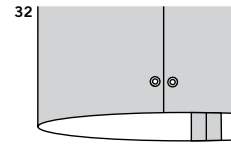


29. Cut elastic the measurement of guide for elastic upper (12) and guide for elastic lower (14). Insert elastic through opening in each casing, working elastic through all rows at same time. This eliminates that tug-of-war that you always have when trying to pull that last piece of elastic through an already bunched up casing. Overlap ends and hold with safety pin. Try on garment and adjust to fit if necessary. Stitch ends of elastic together securely.

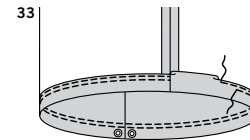
30. SLIPSTITCH opening edges of each casing together. Distribute fullness evenly.
TIP-To secure elastic so it won't twist in wearing, stitch through all thicknesses of casing in the groove of each seam.



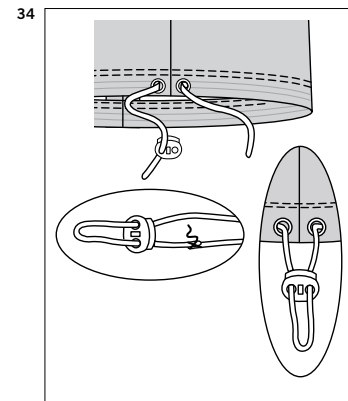
31. Cut a piece of elastic cording measuring approximately 70" (178cm) long OR as desired for waist. Insert elastic through openings in casing. Thread ends of cording through barrel stops and lap ends; stitch ends of elastic securely. Feed stitched end of cording into casing.



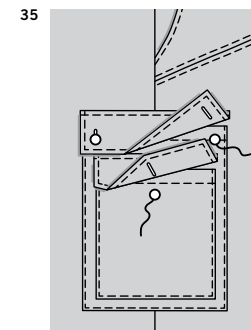
32. Reinforce legs in casing area, at markings, using a piece of fusible interfacing. Apply grommets to lower edge at markings, following manufacturer's directions.



33. Press under 1-1/4" (3.2cm) on lower edge of pants. Press under 1/4" (6mm) on raw edge. Stitch close to inner pressed edge. Stitch again 1/4" (6mm) away from first stitching.



34. Cut two pieces of cording, approximately 30" (76cm) long. Insert elastic through leg openings. Thread ends of cording through barrel stops and lap ends; stitch ends of elastic securely. Feed stitched end of cording into casing.



35. Sew buttons to pockets at markings.



Congrats!

You've completed your sewing adventure

**SHARE
YOUR** LOOK



Post your pattern and tag us
@simplicity_creative_group and **#simplicitypatterns**
for a chance to be featured on our social media.

Look for more PDF patterns at [simplicity.com](https://www.simplicity.com)

Have a question or need help with your sewing project call us at
1-888-588-2700



Simplicity ©2024 a division of IG Design Group Americas Inc. • Atlanta, GA 30342 USA www.thedesigngroup.com • All Rights Reserved. www.simplicity.com • Made in the U.S.A. Fabriqué aux États-Unis.

To be used for individual private home use only and not for commercial or manufacturing purposes. • A usage privé seulement et non à des fins commerciales ou de production en série. • Para uso privado solamente, no se puede utilizar con propósitos de comercialización o de producción en serie.