

S9958

Simplicity®



Average										
MISSES' TOP AND SKIRT										
Suggested Fabrics: Chambray, Double Gauze, Linens, Silky Types, Soft Cotton. Lining A: Lightweight Cotton, Polyester, Rayon.										
Notions: A: One 12" (30cm) separating zipper (adjust to fit). B: 1¼ yds. (1.2m) of 1" (2.5cm) elastic.										
Sizes	8	10	12	14	16	18	20	22	24	26
European	34	36	38	40	42	44	46	48	50	52
BODY MEASUREMENTS: Select pattern size based on body measurements										
Bust	31½	32½	34	36	38	40	42	44	46	48 Ins.
Waist	24	25	26½	28	30	32	34	37	39	41½ "
Hip-9" below waist	33½	34½	36	38	40	42	44	46	48	50 "
Back-neck to waist	15½	16	16¼	16½	16¾	17	17¼	17½	17¾	17¾ "
Top A	45**	1%	1%	1%	1%	1%	1%	2%	2%	2% Yds.
	60**	1%	1%	1%	1%	1%	1%	1%	1%	1% "
Lining	45***	½	½	½	½	¾	¾	¾	¾	¾ "
Skirt B	45**	3%	3%	3%	3%	3%	3%	3%	3%	3%Yds.
	60**	2%	2%	2%	2%	2%	3%	3%	3%	3% "
FINISHED GARMENT MEASUREMENTS (Includes Design and Wearing Ease)										
A Bust	35	36	37½	39½	41½	43½	45½	47½	49½	51½Ins.
Finished back length from base of neck										
Top A	19¼	19½	19¾	20	20¼	20½	20¾	21	21¼	21½Ins.
Finished back length from waist										
Skirt B	30	30	30	30	30	30	30	30	30	Ins.
*with nap **without nap										

*with nap **without nap

Moins Facile

HAUT ET JUPE POUR JEUNES FEMMES

Tissus Conseillés: Chambray, Gaze double, Toiles de lin, Types soie, Cotons souple.

Doublure A: Coton léger, Polyester, Rayonne.

Mercerie: A: 1 fermeture à glissière séparable de 30cm (adaptez pour ajuster).
B: 1.2m d'élastique de 2.5cm.

Tailles	8	10	12	14	16	18	20	22	24	26	
Françaises	36	38	40	42	44	46	48	50	52	54	
Européen	34	36	38	40	42	44	46	48	50	52	

MESURES DU CORPS: Choisissez la taille du patron basée sur les mesures du corps

Poitrine	80	83	87	92	97	102	107	112	117	122	cm
Taille	61	64	67	71	76	81	87	94	99	106	"

Hanches (23cm au-dessous de la taille)

	85	88	92	97	102	107	112	117	122	127	cm
--	----	----	----	----	-----	-----	-----	-----	-----	-----	----

Dos du cou à la taille 40

	40	40.5	41.5	42	42.5	43	44	44	44.5	44.5	"
--	----	------	------	----	------	----	----	----	------	------	---

Haut A

115cm*	1.5	1.5	1.6	1.6	1.6	1.7	1.7	1.9	2.1	2.1	m
150cm*	1.1	1.1	1.1	1.1	1.1	1.3	1.3	1.5	1.5	1.5	"

Doublure

115cm*	0.5	0.5	0.5	0.5	0.6	0.6	0.6	0.6	0.6	0.7	"
--------	-----	-----	-----	-----	-----	-----	-----	-----	-----	-----	---

Jupe B

115cm*	3.5	3.5	3.5	3.5	3.5	3.5	3.5	3.5	3.5	3.5	m
150cm*	2.2	2.2	2.2	2.4	2.6	2.7	2.9	2.9	2.9	3.0	"

MESURES DES VÊTEMENTS FINI (Motif et aisance de port compris)

A Poitrine	89	91	95	100	105	110	116	121	126	131	cm
------------	----	----	----	-----	-----	-----	-----	-----	-----	-----	----

Longueur finie – dos, votre nuque à l'ourlet

Haut A	49	50	50	51	51	52	53	53	54	55	cm
--------	----	----	----	----	----	----	----	----	----	----	----

Longueur finie – dos, taille à l'ourlet

Jupe B	76	76	76	76	76	76	76	76	76	76	cm
--------	----	----	----	----	----	----	----	----	----	----	----

*avec sens **sans sens

*avec sens **sans sens



A



B

Simplicity®

Thank you for purchasing this Simplicity pattern.
We made every effort to provide you with a high quality product.



A



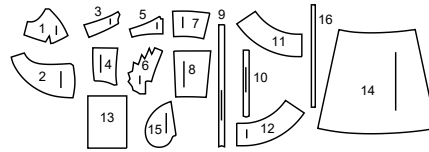
B



A

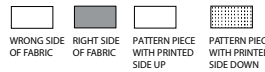


B



- 1 UPPER FRONT-A
- 2 FRONT OVERLAY-A
- 3 MIDDLE FRONT-A
- 4 MIDDLE FRONT OVERLAY-A
- 5 LOWER FRONT-A
- 6 LOWER FRONT (OVERLAY)-A
- 7 BACK-A
- 8 BACK OVERLAY-A
- 9 STRAP-A
- 10 SHOULDER STRAP-A
- 11 FRONT PEPLUM-A
- 12 BACK PEPLUM-A
- 13 YOKE FRONT AND BACK-B
- 14 SKIRT FRONT AND BACK-B
- 15 POCKET-B
- 16 ELASTIC GUIDE FOR WAIST-B

Cutting Layouts

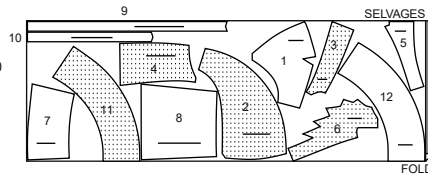


POSITION OF PATTERN PIECES MAY VARY
SLIGHTLY ACCORDING TO YOUR PATTERN SIZE

TOP A

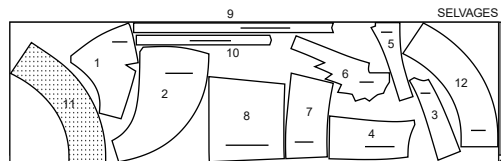
USE PIECES 1 2 3 4 5 6 7 8 9 10 11 12

45" (115CM)
WITH NAP
SIZES 8 10 12 14 16 18 20



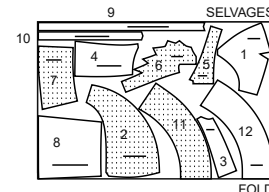
FOLD

45" (115CM)
WITH NAP
SIZES 22 24 26



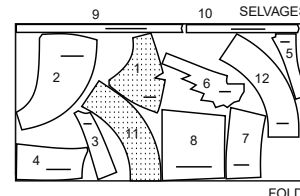
FOLD

60" (150CM)
WITH NAP
SIZES 8 10 12 14 16 18 20



FOLD

60" (150CM)
WITH NAP
SIZES 22 24 26

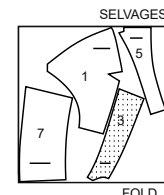


FOLD

LINING A

USE PIECES 1 3 5 7

45" (115CM)
WITHOUT NAP
ALL SIZES



FOLD

General Directions

The Pattern

SYMBOLS

- GRAIN LINE Place on straight grain of fabric parallel to selvage
- PLACE SOLID LINE on fold of fabric.
- CENTER FRONT OR BACK OF garment.
- NOTCHES
- DOTS
- CUTTING LINE
- LENGTHEN OR SHORTEN LINES

SEAM ALLOWANCE: 5/8" (1.5cm) unless otherwise stated is included but not printed on MULTI-SIZE PATTERNS. Mark your size with colored felt tip pen. See chart on tissue for how to use MULTI-SIZE PATTERNS.

ADJUST IF NEEDED

Make adjustments before placing pattern on fabric.

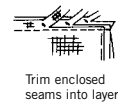
TO LENGTHEN:
Cut pattern between lengthen or shorten lines. Spread pattern evenly, the amount needed and tape to paper.

TO SHORTEN:
At lengthen or shorten lines, make an even pleat taking up amount needed. Tape in place.

When lengthen or shorten lines are not given, make adjustments at lower edge of pattern.

Sewing

- SEW garment following **Sewing Directions**.
- PIN or machine-baste seams matching notches.
- STITCH 5/8" (1.5 cm) seams unless otherwise stated.
- PRESS seams open unless otherwise indicated clipping when necessary so seams will lie flat.
- TRIM seams to reduce bulk, as shown below.



Trim enclosed seams into layers



Trim corners



Clip inner curves



Notch outer curves

Cutting/Marking

BEFORE CUTTING:

PRESS pattern pieces with a warm dry iron. PRE-SHRINK fabric by pre-washing washables or steam-pressing non-washables.

CIRCLE your cutting layout.

PIN pattern to fabric as shown in Cutting Layouts.

• FOR DOUBLE THICKNESS: Fold fabric with RIGHT sides together.

• FOR SINGLE THICKNESS: Place fabric RIGHT side up.

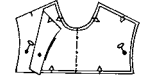
• FOR PILE, SHADED OR ONE WAY DESIGN FABRICS: Use "with nap" layouts

AFTER CUTTING:

Transfer markings to WRONG side of fabric before removing pattern. Use pin and chalk method or dressmaker's tracing paper and wheel.

To Quick Mark:

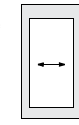
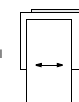
- Snip edge of fabric to mark notches, ends of fold lines and center lines.
- Pin mark dots.



SPECIAL CUTTING NOTES

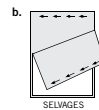
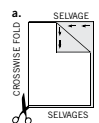
★ If layout shows a piece extending past fold, cut out all pieces except piece that extends.

Open out fabric to single thickness. Cut extending piece on RIGHT side of fabric in position shown.



✱ Mark small arrows along both selvages indicating direction of nap or design. Fold fabric crosswise with RIGHT sides together, and cut along fold (a).

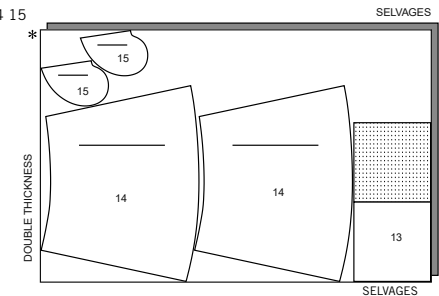
Turn one fabric layer around so arrows on both layers go in the same direction. Place RIGHT sides together (b).



SKIRT B

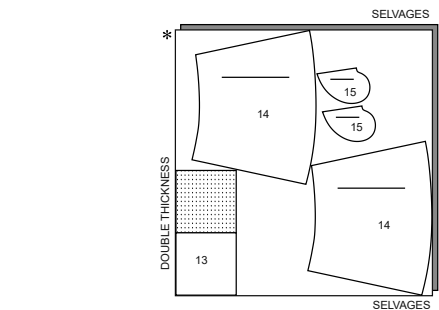
USE PIECES 13 14 15

45" (115CM)
WITH NAP
ALL SIZES



SELVAGES

60" (150CM)
WITH NAP
ALL SIZES



SELVAGES

SEWING TUTORIALS



Build your skills viewing short, easy-to-follow videos at [simplicity.com/sewingtutorials](https://www.simplicity.com/sewingtutorials)

Sewing Directions



Read **General Directions** on page 1 before you begin.

Sewing methods in **BOLD TYPE** have Sewing Tutorial Video available. Scan QR CODE to watch videos:

GATHER – See Gathering: “sewing two row gathers” video.

FLAT DART – See Darts: “sewing flat dart” video.

NARROW HEM – See Hems: “sewing narrow hems” video.

STITCH IN THE DITCH – See Machine Stitches: “how to stitch in the ditch” video.

TOPSTITCH – See Machine Stitches: “how to topstitch” video.

TRIM SEAM – See Seams: “how to trim, clip and layer seams” video.

UNDERSTITCH – See Machine Stitches: “how to understitch” video.

PATTERN PIECES WILL BE IDENTIFIED BY NUMBERS THE FIRST TIME THEY ARE USED.

STITCH 5/8" (1.5CM) SEAMS WITH RIGHT SIDES TOGETHER UNLESS OTHERWISE STATED.

TOP A

1. To make **FLAT DART** in UPPER FRONT (1) sections, with **RIGHT** sides together, bring broken lines together, matching small dots. Stitch along broken line from wide end to point. Press dart toward center.

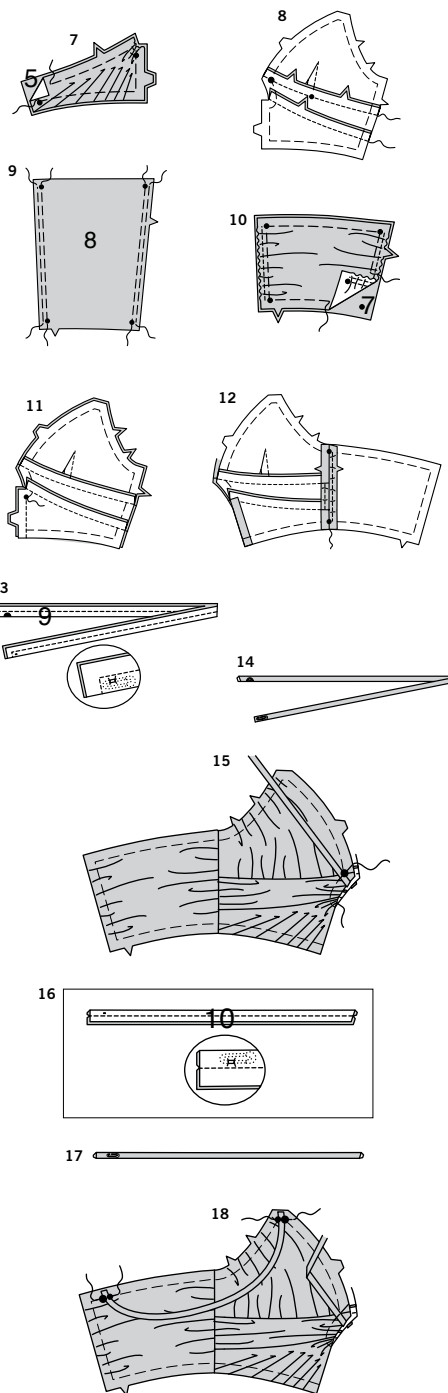
2. To **GATHER** upper and lower edge of FRONT OVERLAY (2) sections, stitch 5/8" (1.5cm) from cut edge using a long stitch. Stitch again 1/4" (6mm) from the first stitching within the seam allowance.

3. Pin **WRONG** side of front overlay to **RIGHT** side of upper front, matching small dots, large dots, and notches, pulling up gathering stitches to fit, and distributing gathers evenly. Baste along seamlines.

4. **GATHER** side edges of MIDDLE FRONT OVERLAY (4) sections.

5. Pin **WRONG** side of middle front overlay to **RIGHT** side of MIDDLE FRONT (3), matching large dots and notches, pulling up gathering stitches to fit, and distributing gathers evenly. Baste along seamlines.

6. **GATHER** inner curved edge of LOWER FRONT OVERLAY (6) sections. To make pleats, on **OUTSIDE**, fold along solid lines. Bring folds to broken lines; pin. Baste across raw edge.



7. Pin **WRONG** side of lower front overlay to **RIGHT** side of LOWER FRONT (5), matching small dots and notches, pulling up gathering stitches to fit, and distributing gathers evenly. Baste along seamlines.

8. Pin lower edge of upper front to upper edge of middle front, matching small dots, large dots, and notches. Stitch. Pin lower edge of middle front to upper edge of lower front, matching notches. Stitch. Press seams toward upper front.

9. **GATHER** side edges of BACK OVERLAY (8) sections.

10. Pin **WRONG** side of back overlay to **RIGHT** side of BACK (7), matching small dots and notches, pulling up gathering stitches to fit, and distributing gathers evenly. Baste along seamlines.

11. Stitch center front edges of top, from lower edge to large dot, backstitching at dot to reinforce the seam. Press seam open.

12. Stitch front to back at side edges. Press seams open.

13. On **OUTSIDE**, attach a small safety pin to unmarked end of STRAP (9), outside the seam allowance and off center. Fold strap in half, lengthwise, with **RIGHT** sides together, sandwiching the pin. Stitch long edge and end in a 3/8" (1cm) seam. **TRIM SEAM.**

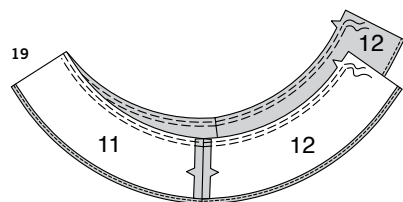
14. Draw safety pin forward, through fold, turning strap **RIGHT** side out.

15. On **OUTSIDE**, pin straps to middle front sections at large dots with raw edges even. Baste.

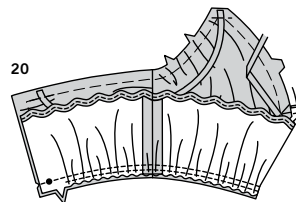
16. Fold SHOULDER STRAP (10) in half, lengthwise with **RIGHT** sides together. Stitch long edge in a 3/8" (1cm) seam. Attach a safety pin to one end of strap.

17. Draw safety pin forward, through fold, turning strap **RIGHT** side out.

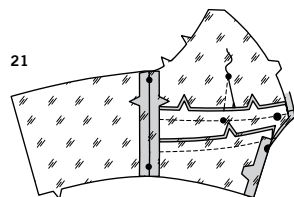
18. On **OUTSIDE**, pin shoulder straps to top with raw edges even, matching small and large dots. Baste.



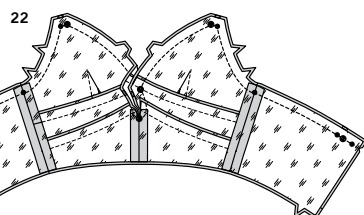
19. Pin FRONT PEPLUM (11) to BACK PEPLUM (12) at side edges, matching notches. Stitch. **GATHER** upper edge between back notches. Press under 5/8" (1.5cm) hem allowance on lower edge of peplum. To form **NARROW HEM**, tuck under raw edge to meet crease. Press. Stitch hem in place close to inner pressed edge.



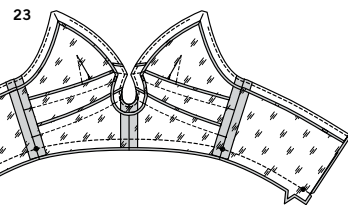
20. With RIGHT sides together and raw edges even, pin peplum to top, matching centers, seams, and notches, pulling up gathering stitches to fit and distributing gathers evenly. Baste; stitch.



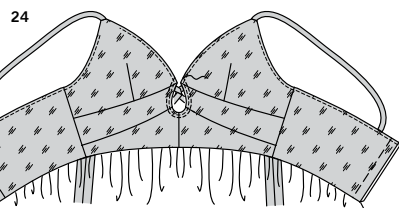
21. Make flat darts in upper front lining sections and stitch all lining sections together in the same manner as top, omitting overlay.



22. With RIGHT sides together and raw edges even, pin lining to top, matching centers and seams. Stitch upper edge, pivoting with needle in fabric at corners. **TRIM SEAM.**



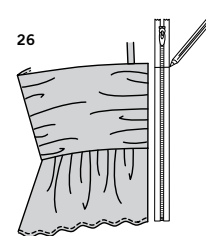
23. **UNDERSTITCH** the lining as far as possible. Pin lower edge of lining to top (over peplum), matching centers and seams. Stitch lower edge.



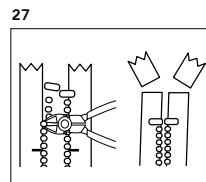
24. Turn top RIGHT side out through opening in back edges. Press, pressing peplum out. **TOPSTITCH** 3/8" (1cm) from keyhole, between large dots. Baste back edges together.



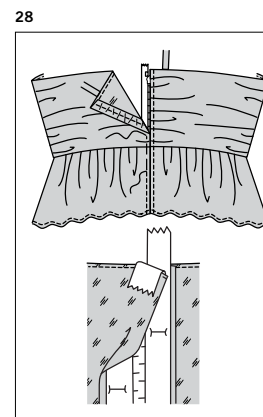
25. Turn back edges to INSIDE along basting. Press.



26. To adjust the length of the Separating Zipper from the top, measure RIGHT back opening edge of garment, minus 1/4" (6mm), and mark the length on the zipper tape, measuring from the lower edge of the bottom stop.

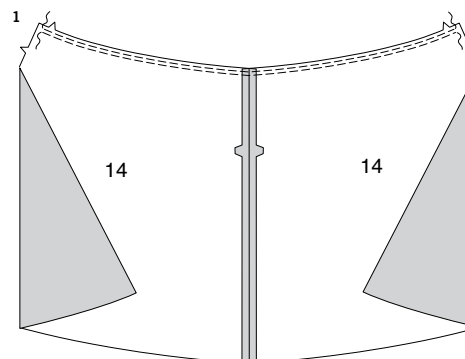


27. Cut off extra zipper 7/8" (2.2cm) above the mark with the zipper pull well below intended cut. Do not discard the pieces. Using pliers, remove the teeth above the shortening mark, pry top-stops open and remove them from the discarded pieces of zipper. Reinstall top stops by crimping them in place immediately above the last remaining tooth.

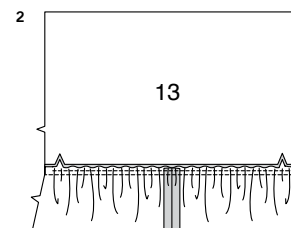


28. Pin closed zipper under opening edges with tab end even with upper edge of opening, having edges meet at center of zipper. Turn upper ends of zipper tape over seam allowances. Baste. Stitch 1/4" (6mm) each side of center, using an adjustable zipper foot. Remove basting. Tie strap into a bow at back of neck when wearing.

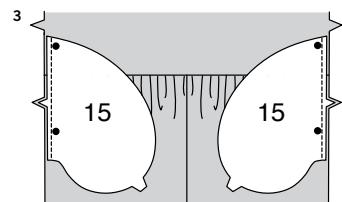
SKIRT B



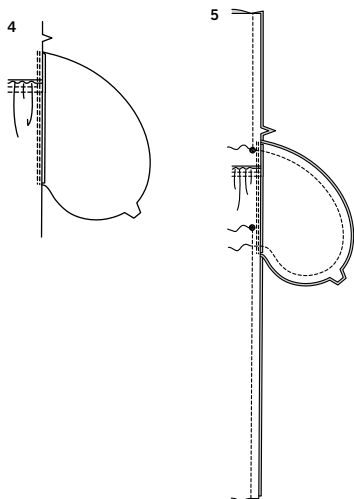
1. To make skirt front, pin center edges of two SKIRT FRONT AND BACK (14) sections, matching notches. Stitch. **GATHER** upper edge.



2. With RIGHT sides together and raw edges even, pin YOKE FRONT AND BACK (13) to skirt, matching centers and notches, pulling up gathering stitches to fit, distributing gathers evenly. Baste; stitch. Press seam toward yoke. Make skirt yoke and back in the same manner.

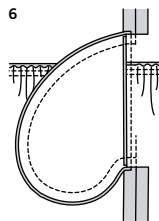


3. With RIGHT sides together, pin POCKET (15) to front, matching large dots, having raw edges even. Stitch in 3/8" (1cm) seam. Stitch pocket to back in the same manner.

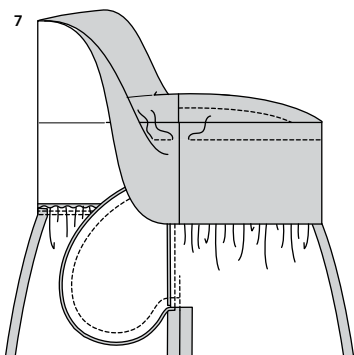


4. **UNDERSTITCH** the front pockets. Press seam toward pockets, pressing pockets out.

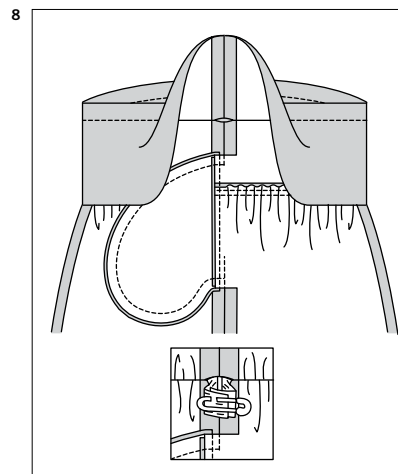
5. Pin front to back at side seams, matching large dots. Stitch side seams, leaving an opening between the large dots. Stitch pocket edges together between side seams.



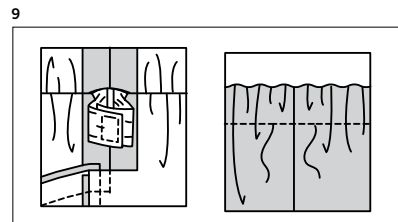
6. Clip skirt back seam allowance at ends of pocket, as shown. Press seam open above and below clips. Press pocket toward front.



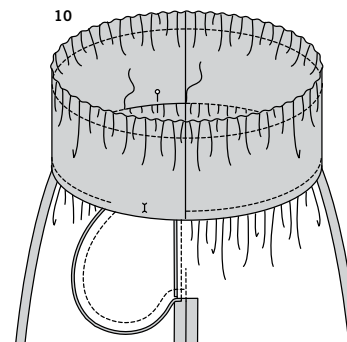
7. Fold yoke facing to INSIDE along fold line. Press. To make casing for elastic, on OUTSIDE, stitch a generous 1-1/8" (2.8cm) from pressed edge, leaving an opening to insert elastic.



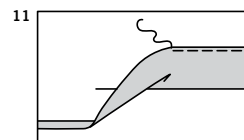
8. Cut a piece of elastic the length of ELASTIC GUIDE FOR WAIST (16). Insert elastic through casing. Overlap ends and hold with a safety pin. Try on skirt and adjust to fit.



9. Stitch ends of elastic together securely. Stitch opening closed. Distribute fullness evenly.
TIP – To secure elastic so it won't twist in wearing, stitch through all thicknesses of casing in the groove of each seam.



10. On INSIDE, pin lower edge of yoke facing to skirt over seam, placing pins on OUTSIDE. On OUTSIDE, **STITCH IN THE DITCH** of the seam on back and on front between inner edges of pockets, catching in lower edge of facing.



11. Mark length. Press up hem along marking. Mark depth of hem; trim evenly. Press under 1/4" (6mm) on raw edge. Stitch close to inner pressed edge.



Congrats!

You've completed your sewing adventure

SHARE YOUR LOOK



Post your pattern and tag us
@simplicity_creative_group and **#simplicitypatterns**
for a chance to be featured on our social media.

Look for more PDF patterns at [simplicity.com](https://www.simplicity.com)

Have a question or need help with your sewing project call us at
1-888-588-2700



Simplicity ©2024 a division of IG Design Group Americas Inc. • Atlanta, GA 30342 USA www.thedesigngroup.com • All Rights Reserved. www.simplicity.com • Made in the U.S.A. Fabriqué aux États-Unis.

To be used for individual private home use only and not for commercial or manufacturing purposes. • A usage privé seulement et non à des fins commerciales ou de production en série. • Para uso privado solamente, no se puede utilizar con propósitos de comercialización o de producción en serie.