

S9956

**Simplicity®**

*easy-to-sew*



Easy

**MISSES' SHORTS AND PANTS**

**Suggested Fabrics:** Chino, Cotton Blends, Lightweight Twill, Linen Blends.

**Notions:** **A,B,C:** 3½ yds. (3.6m) of ¾" (1cm) elastic. **Also for B,C:** 1½ yds. (1.4m) of ½" (1.3cm) ribbon or twill tape.

Sizes	XS	S	M	L	XL	XXL
	4-6	8-10	12-14	16-18	20-22	24-26
European	30-32	34-36	38-40	42-44	46-48	50-52

**BODY MEASUREMENTS:** Select pattern size based on body measurements

Bust	29½-30½	31½-32½	34-36	38-40	42-44	46-48	Ins.
Waist	22-23	24-25	26½-28	30-32	34-37	39-41½	"
Hip-9" below waist	31½-32½	33½-34½	36-38	40-42	44-46	48-50	"
Back-neck to waist	15¼-15½	15¾-16	16¼-16½	16¾-17	17¼-17½	17¾-18	"

Shorts A	45**	1¼	1¼	1¼	1¼	1¼	1¼	Yds.
	60**	1	1	1¼	1¼	1¼	1¼	"

Pants B	45**	2¼	3	3	3¼	3¼	3¼	Yds.
	60**	2¼	2¼	2¼	2¾	3¼	3¼	"

Pants C	45**	2¼	2¼	2¼	2¼	2¾	2¾	Yds.
	60**	1¼	1¼	1¼	1¼	2	2¾	"

Contrast (Center Panel, Casing, Lower Pocket)	45/60**	¾	¾	¾	¾	¾	1	Yd.
---	---------	---	---	---	---	---	---	-----

**FINISHED GARMENT MEASUREMENTS (Includes Design and Wearing Ease)**

A,B,C Hip	37½	39½	43	47	51	55	Ins.
Width, each leg							

Shorts A	22½	24	26	28½	31	33½	Ins.
Pants B,C	22	23½	25½	28	30½	33	"

**Finished side length from waist**

Shorts A	14½	15	15½	16	16½	17	Ins.
Pants B,C	36½	37	37½	38	38½	39	"

\*with nap \*\*without nap

Facile

**SHORT ET PANTALON POUR JEUNES FEMMES**

**Tissus Conseillés:** Chino, Cotonnades, Twill léger, Toile de lin mélangés.

**Mercurie:** **A,B,C:** 3.6m d'élastique de 1cm. **Aussi pour B,C:** 1.4m de ruban ou de talonnette de coton de 1.3cm.

Tailles	TP/XS	P/S	M/M	G/L	TG/XL	TTG/XXL
Françaises	32-34	36-38	40-42	44-46	48-50	52-54
Européen	30-32	34-36	38-40	42-44	46-48	50-52

**MESURES DU CORPS:** Choisissez la taille du patron basée sur les mesures du corps

Poitrine	75-77	80-83	87-92	97-102	107-112	117-122	cm
Taille	56-58	61-64	67-71	76-81	87-94	99-105	"

**Hanches (23cm au-dessous de la taille)**

	80-83	85-88	92-97	102-107	112-117	122-127	cm
Dos du cou à la taille	39-39.5	40-40.5	41.5-42	42.5-43	44-44.5	45-45.5	"

Short A	115cm*	1.1	1.1	1.3	1.4	1.4	m
	150cm*	0.9	0.9	0.9	1.0	1.0	"

Pantalón B	115cm*	2.6	2.7	2.7	2.9	2.9	m
	150cm*	2.1	2.1	2.1	2.2	2.9	"

Pantalón C	115cm*	2.3	2.4	2.4	2.4	2.4	m
	150cm*	1.4	1.4	1.4	1.5	1.8	"

Contraste (Panneau central, Coulisse, Poche Inférieure)	115/150cm*	0.7	0.7	0.7	0.8	0.8	m
---	------------	-----	-----	-----	-----	-----	---

**MESURES DES VÊTEMENTS FINI (Motif et aisance de port compris)**

A,B,C Hanches	95	100	109	119	130	140	cm
Largeur, chaque jambe							

Short A	57	61	66	72	79	85	cm
Pantalón B,C	56	60	65	71	77	84	"

**Longueur finie – côté, taille à l'ourlet**

Short A	37	38	39	41	42	43	cm
Pantalón B,C	93	94	95	97	98	99	"

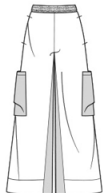
\*avec sens \*\*sans sens



A



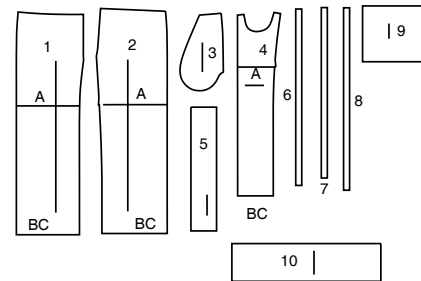
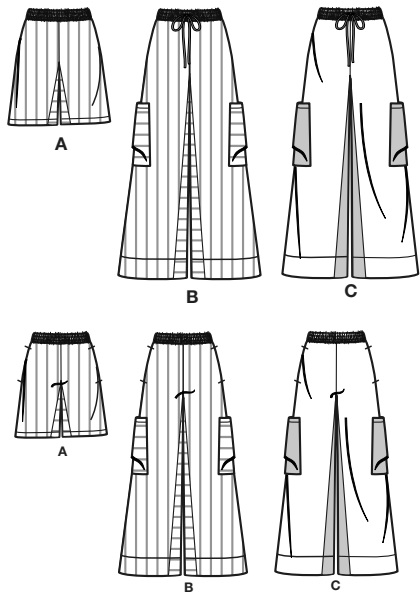
B



C

# Simplicity®

Thank you for purchasing this Simplicity pattern.  
We made every effort to provide you with a high quality product.



- 1 Front-A,B,C
- 2 Back-A,B,C
- 3 Pocket-A,B,C
- 4 Center Panel-A,B,C
- 5 Casing-A,B,C
- 6 Elastic Guide Upper-A,B,C
- 7 Elastic Guide Middle-A,B,C
- 8 Elastic Guide Lower-A,B,C
- 9 Lower Pocket-B,C
- 10 Facing-B,C



www.simplicity.com



info@simplicity.com



1-888-588-2700

## General Directions

### The Pattern

- SYMBOLS**
- ↔ GRAIN LINE Place on straight grain of fabric parallel to selvage
  - ↓ PLACE SOLID LINE on fold of fabric.
  - CENTER FRONT OR BACK of garment.
  - ▽ NOTCHES
  - DOTS
  - CUTTING LINE
  - == LENGTHEN OR SHORTEN LINES

SEAM ALLOWANCE: 5/8" (1.5cm) unless otherwise stated is included but not printed on MULTI-SIZE PATTERNS. Mark your size with colored felt tip pen. See chart on tissue for how to use MULTI-SIZE PATTERNS.

**ADJUST IF NEEDED**  
Make adjustments before placing pattern on fabric.

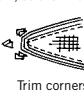
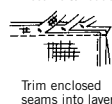
**TO LENGTHEN:**  
Cut pattern between lengthen or shorten lines. Spread pattern evenly, the amount needed and tape to paper.

**TO SHORTEN:**  
At lengthen or shorten lines, make an even pleat taking up amount needed. Tape in place.

When lengthen or shorten lines are not given, make adjustments at lower edge of pattern.

### Sewing

- SEW garment following **Sewing Directions**.
- PIN or machine-baste seams matching notches.
- STITCH 5/8" (1.5 cm) seams unless otherwise stated.
- PRESS seams open unless otherwise indicated clipping when necessary so seams will lie flat.
- TRIM seams to reduce bulk, as shown below.



### Cutting/Marking

#### BEFORE CUTTING:

PRESS pattern pieces with a warm dry iron. PRE-SHRINK fabric by pre-washing washables or steam-pressing non-washables.

CIRCLE your cutting layout.

PIN pattern to fabric as shown in Cutting Layouts.

- FOR DOUBLE THICKNESS: Fold fabric with RIGHT sides together.
- FOR SINGLE THICKNESS: Place fabric RIGHT side up.
- FOR PILE, SHADED OR ONE WAY DESIGN FABRICS: Use "with nap" layouts

#### AFTER CUTTING:

Transfer markings to WRONG side of fabric before removing pattern. Use pin and chalk method or dressmaker's tracing paper and wheel.

#### To Quick Mark:

- Snip edge of fabric to mark notches, ends of fold lines and center lines.
- Pin mark dots.



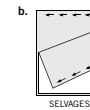
#### SPECIAL CUTTING NOTES

★ If layout shows a piece extending past fold, cut out all pieces except piece that extends.

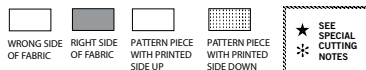
Open out fabric to single thickness. Cut extending piece on RIGHT side of fabric in position shown.

✱ Mark small arrows along both selvages indicating direction of nap or design. Fold fabric crosswise with RIGHT sides together, and cut along fold (a).

Turn one fabric layer around so arrows on both layers go in the same direction. Place RIGHT sides together (b).



## Cutting Layouts

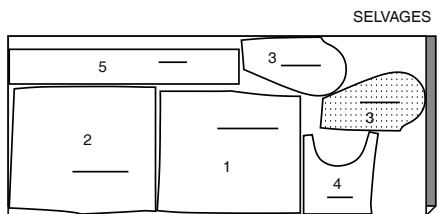


POSITION OF PATTERN PIECES MAY VARY SLIGHTLY ACCORDING TO YOUR PATTERN SIZE

### SHORTS A

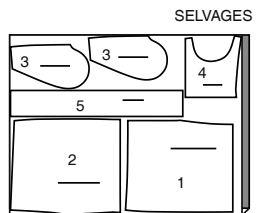
USE PIECES 1 2 3 4 5

45" (115CM)  
WITH NAP  
ALL SIZES



FOLD

60" (150CM)  
WITH NAP  
ALL SIZES

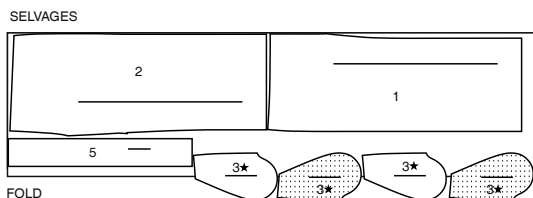


FOLD

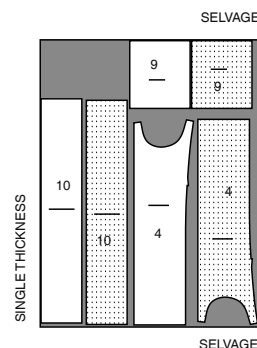
### PANTS B

USE PIECES 1 2 3 4 5 9 10

45" (115CM)  
WITH NAP  
ALL SIZES



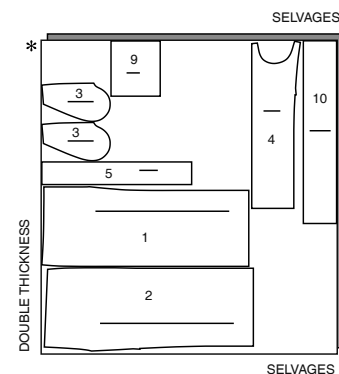
FOLD



SELVAGE

SELVAGE

60" (150CM)  
WITH NAP  
ALL SIZES



SELVAGES

CUTTING LAYOUTS CONTINUED ON PAGE 2

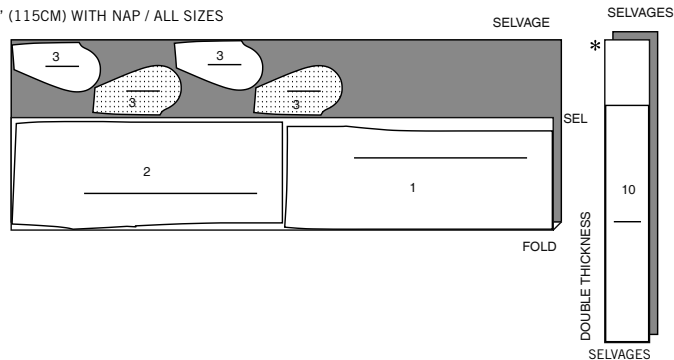
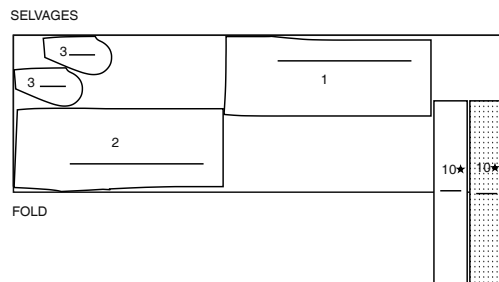
**S9956**

2 of 3

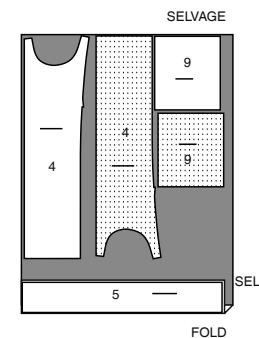
**PANTS C**

USE PIECES 1 2 3 10

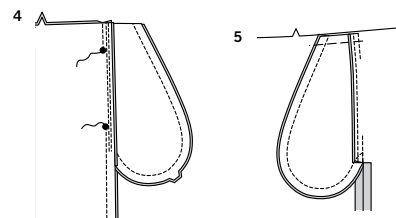
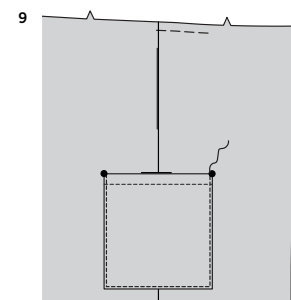
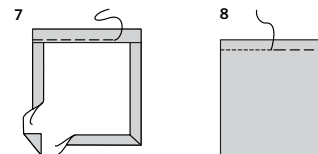
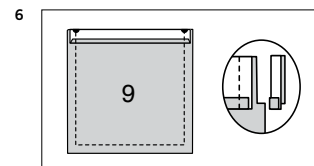
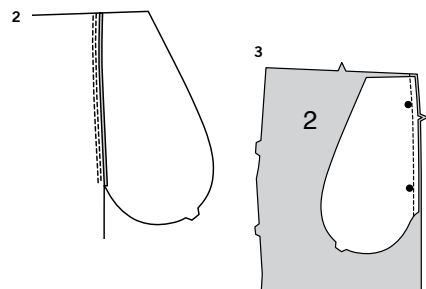
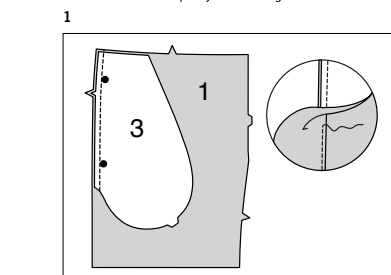
45" (115CM) WITH NAP / ALL SIZES

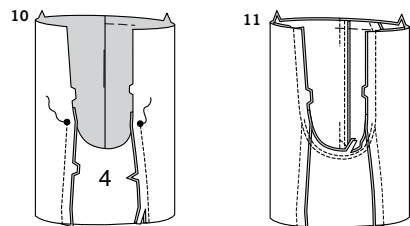
60" (150CM)  
WITH NAP  
ALL SIZES**CONTRAST C (LOWER POCKET, CENTER PANEL, CASING)**

USE PIECES 4 5 9

45"/60" (115CM/150CM)  
WITH NAP  
ALL SIZES

## SEWING TUTORIALS

Build your skills viewing short, easy-to-follow videos at  
[simplicity.com/sewingtutorials](http://simplicity.com/sewingtutorials)**Sewing Directions**FABRIC KEY RIGHT SIDE WRONG SIDE INTERFACING LINING LININGRead **General Directions** on page 1 before you begin.Sewing methods in **BOLD TYPE** have Sewing Tutorial Video available.  
Scan QR CODE to watch videos:**BLINDSTITCH** - See how to blindstitch video.**SLIPSTITCH** - See how to slipstitch video.**STAYSTITCH** - See how to do stay-stitching video.**TOPSTITCH** - See how to topstitch video.**UNDERSTITCH** - See how to understitch video.**SHORTS A, PANTS B, C****FRONT AND BACK****1.** With **RIGHT** sides together, pin one POCKET (3) to each **FRONT** (1), matching large dots, having raw edges even. Stitch in 3/8" (1cm) seam. **UNDERSTITCH** pocket.**2.** Press seam toward pocket, pressing pocket out.**3.** With **RIGHT** sides together, pin one remaining pocket to each **BACK** (2), matching large dots, having raw edges even. Stitch in 3/8" (1cm) seam.**4.** Pin front to back at side seam, matching large dots. Stitch side seam, leaving an opening between large dots. Stitch pocket edges together to side seam.**5.** Clip back seam allowance below pockets. Press seam open below clip. Press pocket toward front. Baste across upper edge.**VIEWS B, C:****6.** Turn in 1/4" (6mm) on upper edge of each POCKET (9). Press. Turn upper edge to outside along foldline. Stitch along seamline on raw edges. Trim seam allowance in the facing area, as shown.**7.** Turn upper edge of lower pocket to inside. Press, pressing under raw edges along stitching, diagonally folding corners. Baste close to inner pressed edge.**8.** On **OUTSIDE**, **TOPSTITCH** along basting.**9.** On **OUTSIDE**, pin pocket to front and back, matching large dots. Stitch close to side and lower edges.



## ALL VIEWS

**10.** With RIGHT sides together, pin CENTER PANEL (4) to front and back, matching dots and notches, as shown. Stitch. Trim seams. Press seams toward center panel.

**11.** For crotch seam, turn one pants leg right side out; slip inside remaining pants leg. Stitch crotch seam. Stitch again 1/4" (6mm) away in seam allowance along curve, as shown. Trim close to second stitching.

## FINISHING

**12.** STAYSTITCH upper edge of pants in direction of arrows.

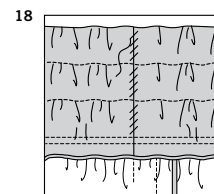
**13.** Stitch CASING (5) sections together at sides leaving open between small dots, as shown.

**14.** With WRONG sides together, fold casing in half lengthwise. Press. Pin raw edges together. The side of the casing with the opening is the underside of the casing.

**15.** With the underside of the casing facing you, pin casing to upper edge of pants, matching centers and seams. Stitch, clipping pants where necessary. Stitch again 1/4" (6mm) away in seam allowance. Trim close to stitching. Press seam toward pants.

**16.** Stitch casing along stitching lines.

**17.** Cut one piece of elastic the length of each, ELASTIC GUIDE UPPER (6), ELASTIC GUIDE MIDDLE (7) and ELASTIC GUIDE LOWER (8). Insert elastic through corresponding opening in casing. Overlap ends and hold with a safety pin. Stitch ends of elastic together securely.



**18.** SLIPSTITCH openings. Distribute fullness evenly.

## VIEW A

**19.** Mark shorts length. Press up hem along marking. Mark depth of hem; trim evenly. Press under 1/4" (6mm) on raw edge. Stitch close to inner pressed edge.

## VIEWS B, C

**20.** Stitch ends of FACING (10) together, matching notches.

**21.** Press under seam allowance on upper unnotched edge of facing.

**22.** With RIGHT sides together, pin facing to lower edge of pants, matching notches. Stitch. Trim seam. UNDERSTITCH facing.

**23.** Turn facing to INSIDE. Press. Baste facing in place close to pressed edge.

**24.** TOPSTITCH along basting, as shown.

**25.** Cut one piece twill tape approximately 46" (103cm) long. Center twill tape horizontally over small dot on casing. Stitch along center of twill tape through all thicknesses. Tie into bow.



# Congrats!

You've completed your sewing adventure

---

## SHARE YOUR LOOK



Post your pattern and tag us  
**@simplicity\_creative\_group** and **#simplicitypatterns**  
for a chance to be featured on our social media.

Look for more PDF patterns at [simplicity.com](https://www.simplicity.com)

Have a question or need help with your sewing project call us at  
1-888-588-2700



Simplicity ©2024 a division of IG Design Group Americas Inc. • Atlanta, GA 30342 USA [www.thedesigngroup.com](https://www.thedesigngroup.com) • All Rights Reserved. [www.simplicity.com](https://www.simplicity.com) • Made in the U.S.A. Fabriqué aux États-Unis.

To be used for individual private home use only and not for commercial or manufacturing purposes. • A usage privé seulement et non à des fins commerciales ou de production en série. • Para uso privado solamente, no se puede utilizar con propósitos de comercialización o de producción en serie.