

Simplicity®



Moins Facile

SHORT ET PANTALON POUR JEUNES FEMMES

Tissus Conseillés: Chino, Cotonnades, Denim, Toile de lin mélangés, Twill. **Doublure:** Cotonnades, Mélanges de polyester. **Entoilage:** Thermocollant léger.

Mercerie: A,B,C: 1 fermeture à glissière de 18cm (adaptez pour ajuster), 1 bouton de 1.5cm (bouton pour jean facultatif).

Tailles	8	10	12	14	16	18	20	22	24	26
Françaises	36	38	40	42	44	46	48	50	52	54
Européennes	34	36	38	40	42	44	46	48	50	52

MESURES DU CORPS: Choisissez la taille du patron basée sur les mesures du corps

Poitrine	80	83	87	92	97	102	107	112	117	122 cm
Taille	61	64	67	71	76	81	87	94	99	106 "
Manches (23 cm au-dessous de la taille)										

Dos du cou à la taille	40	40.5	41.5	42	42.5	43	44	44	44.5	44.5	*
------------------------	----	------	------	----	------	----	----	----	------	------	---

Doublure A,B,C	115cm** - 0.5m
Entoilage	51cm - 0.7m

Short A	115cm*	1.3	1.4	1.4	1.4	1.5	1.7	1.7	1.7	1.7	1.7	n
	150cm*	1.0	1.0	1.0	1.0	1.1	1.1	1.1	1.1	1.3	1.3	"

Pantalon B	115cm*	1.7	1.8	1.8	1.9	1.9	2.1	2.3	2.4	2.4	2.5	n
	150cm*	1.5	1.5	1.5	1.6	1.6	1.6	1.7	1.7	1.7	1.7	"

MESURES DES VÊTEMENTS FINI (Motif et aisance de port compris)

MESURES DES VÉLEMENTS FINI (mètre et décimètre de part compris)										
A,B,C Hanches	108	110	114	119	124	130	135	140	145	150 cm

Largeur, chaque jambe

Shorts A	77	79	83	86	89	92	95	98	102	105 cm
Pants B	73	75	79	82	85	88	91	95	98	101 "
Pants C	64	66	70	73	76	79	83	86	89	92 "

Longueur finie – côté, taille à l'ourlet

Shorts A (repose 2.5cm dessous de la taille) 38 39 39 40 41 41 42 43 43 44 cm

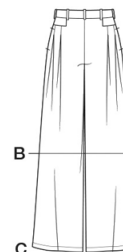
Pants B (répose 2.5cm dessous de la taille, 65 66 6

	65	66	67	67	68	69	69	70	70	71	cm
Pants C (repose 2.5cm dessous de la taille)	106	107	107	108	109	109	110	110	111	112	cm

*avec sens **sans sens



A

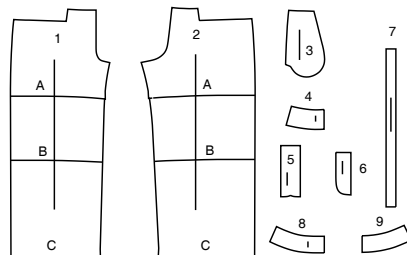
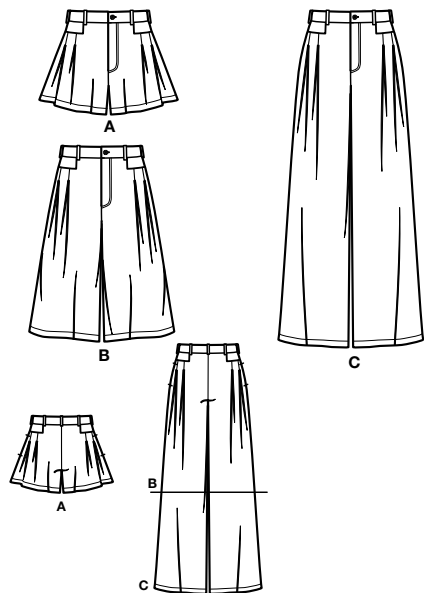


E

C

Simplicity®

Thank you for purchasing this Simplicity pattern.
We made every effort to provide you with a high quality product.



- 1 FRONT - A,B,C
2 BACK - A,B,C
3 POCKET - A,B,C
4 YOKE FRONT AND BACK - A,B,C
5 RIGHT FLY - A,B,C
6 LEFT FLY FACING - A,B,C
7 CARRIER - A,B,C
8 FRONT WAISTBAND - A,B,C
9 BACK WAISTBAND - A,B,C



www.simplicity.com



info@simplicity.com



1-888-588-2700

General Directions

The Pattern

- SYMBOLS**
- ↔ GRAIN LINE Place on straight grain of fabric parallel to selvage
 - ↓ PLACE SOLID LINE on fold of fabric.
 - CENTER FRONT OR BACK of garment.
 - ▽ NOTCHES
 - DOTS
 - CUTTING LINE
 - LENGTHEN OR SHORTEN LINES

SEAM ALLOWANCE: 5/8" (1.5cm) unless otherwise stated is included but not printed on MULTI-SIZE PATTERNS. Mark your size with colored felt tip pen. See chart on tissue for how to use MULTI-SIZE PATTERNS.

ADJUST IF NEEDED

Make adjustments before placing pattern on fabric.

TO LENGTHEN:
Cut pattern between lengthen or shorten lines. Spread pattern evenly, the amount needed and tape to paper.

TO SHORTEN:
At lengthen or shorten lines, make an even pleat taking up amount needed. Tape in place.

When lengthen or shorten lines are not given, make adjustments at lower edge of pattern.

Cutting/Marking

BEFORE CUTTING:

PRESS pattern pieces with a warm dry iron. PRE-SHRINK fabric by pre-washing washables or steam-pressing non-washables.

CIRCLE your cutting layout.

PIN pattern to fabric as shown in Cutting Layouts.

- FOR DOUBLE THICKNESS: Fold fabric with RIGHT sides together.
- FOR SINGLE THICKNESS: Place fabric RIGHT side up.
- FOR PILE, SHADED OR ONE WAY DESIGN FABRICS: Use "with nap" layouts

AFTER CUTTING:

Transfer markings to WRONG side of fabric before removing pattern. Use pin and chalk method or dressmaker's tracing paper and wheel.

To Quick Mark:

- Snip edge of fabric to mark notches, ends of fold lines and center lines.
- Pin mark dots.



Sewing

- SEW garment following **Sewing Directions**.
- PIN or machine-baste seams matching notches.
- STITCH 5/8" (1.5 cm) seams unless otherwise stated.
- PRESS seams open unless otherwise indicated clipping when necessary so seams will lie flat.
- TRIM seams to reduce bulk, as shown below.



Trim enclosed seams into layers



Trim corners



Clip inner curves



Notch outer curves

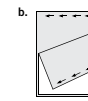
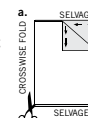
SPECIAL CUTTING NOTES

★ If layout shows a piece extending past fold, cut out all pieces except piece that extends.

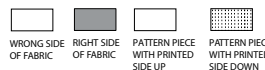
Open out fabric to single thickness. Cut extending piece on RIGHT side of fabric in position shown.

✱ Mark small arrows along both selvages indicating direction of nap or design. Fold fabric crosswise with RIGHT sides together, and cut along fold (a).

Turn one fabric layer around so arrows on both layers go in the same direction. Place RIGHT sides together (b).



Cutting Layouts

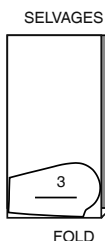


POSITION OF PATTERN PIECES MAY VARY SLIGHTLY ACCORDING TO YOUR PATTERN SIZE

LINING A,B,C

USE PIECE 3

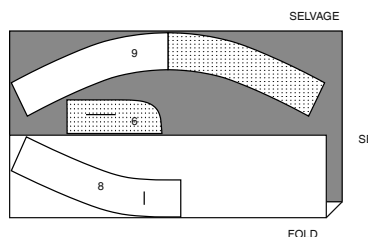
45" (115CM)
WITHOUT NAP
ALL SIZES



INTERFACING A,B,C

USE PIECES 6 8 9

20" (51CM)
ALL SIZES



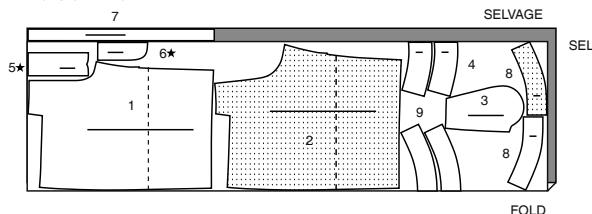
NOTE: DASHED LINE SHOWN ON PATTERN PIECES IN CUTTING LAYOUTS INDICATES CUTTING LINE FOR SHORTER LENGTH

SHORTS A AND PANTS B

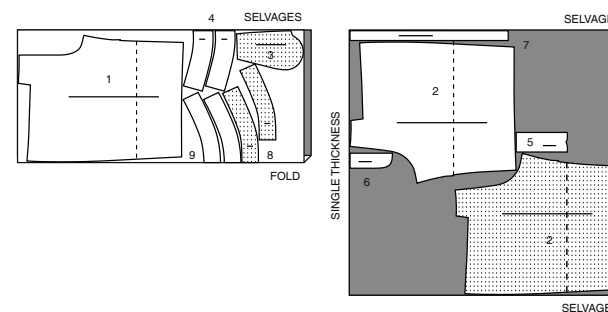
USE PIECES 1 2 3 4 5 6 7 8 9

45" (115CM)
WITH NAP
SIZES 8 10 12 14 16

CUT ONE OF PIECES 5 AND 6

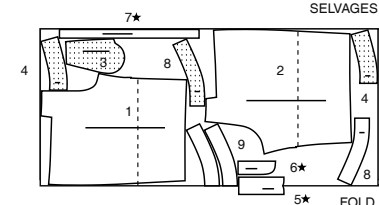


45" (115CM)
WITH NAP
SIZES 18 20 22 24 26



60" (150CM)
WITH NAP
ALL SIZES

CUT ONE OF PIECES 6 AND 7



CUTTING LAYOUTS CONTINUED ON PAGE 2

S9955

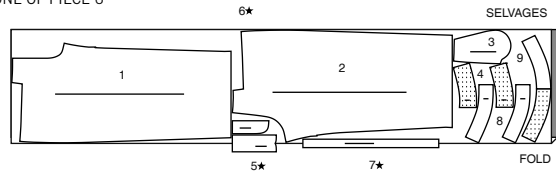
2 of 4

PANTS C

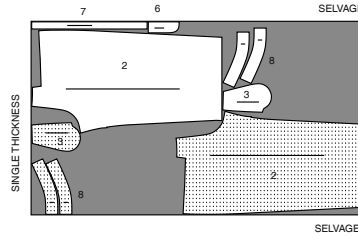
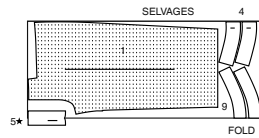
USE PIECES 1 2 3 4 5 6 7 8 9

45" (115CM)
WITH NAP
SIZES 8 10 12 14 16 18 20

CUT ONE OF PIECE 6

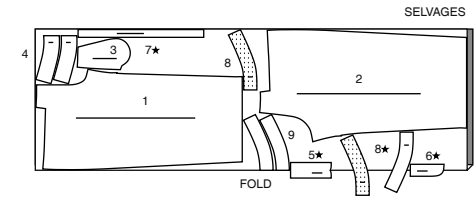


45" (115CM)
WITH NAP
SIZES 22 24 26



60" (150CM)
WITH NAP
ALL SIZES

CUT ONE OF PIECE 7



SEWING TUTORIALS



Build your skills viewing short, easy-to-follow videos at
[simplicity.com/sewingtutorials](https://www.simplicity.com/sewingtutorials)

Sewing Directions

FABRIC KEY

Read **General Directions** on page 1 before you begin.

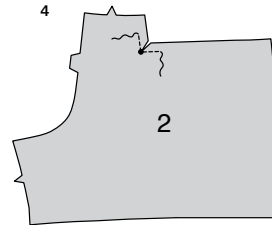
Sewing methods in **BOLD TYPE** have Sewing Tutorial Video available.
Scan QR CODE to watch videos:

EDGE STITCH - see how to edgestitch video.**FINISH** - see how to finish seam allowances video.**REINFORCE** - see how to reinforce video.**SLIPSTITCH** - see how to slip stitch video.**STAYSTITCH** - see how to do stay-stitching video.**UNDERSTITCH** - see how to understitch video.**NOTE:** Shorts and Pants sit 1" (2.5cm) below waist.**SHORTS A, PANTS B, C****INTERFACING**

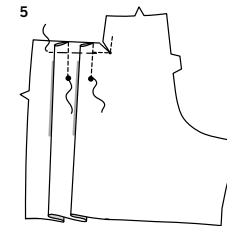
1. Pin INTERFACING to wrong side of each matching FABRIC section. Fuse, following manufacturer's instructions.

FRONT AND BACK

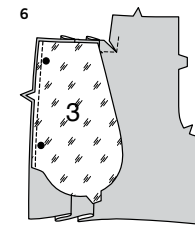
2. **REINFORCE** inner corner of FRONT (1) along stitching line, pivoting at small dot. Clip to small dot.
3. To make pleats in front, on INSIDE, bring broken lines of small dots together. Stitch pleats, ending stitching at small dots. Press pleats toward side. Baste across upper edge.



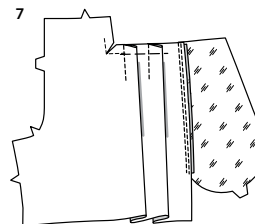
4. **REINFORCE** inner corner of BACK (2) along stitching line, pivoting at small dot. Clip to small dot.



5. To make pleats in back, on INSIDE, bring broken lines of small dots together. Stitch pleats, ending stitching at small dots. Press pleats toward side. Baste across upper edge.



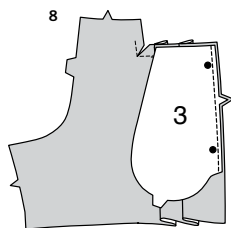
6. With RIGHT sides together, pin one POCKET (3) (lining) section to each front, matching large dots, having raw edges even. Stitch in 3/8" (1cm) seam. **UNDERSTITCH** pocket.



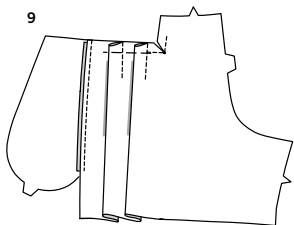
7. Press seam toward pocket, pressing pocket out.

S9955

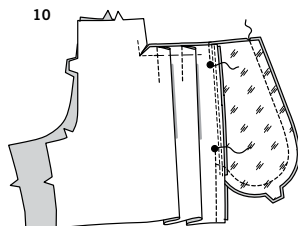
3 of 4



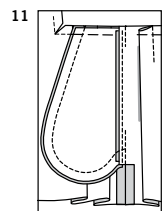
- 8.** With RIGHT sides together, pin one remaining pocket (fabric) section to each back, matching large dots, having raw edges even. Stitch in 3/8" (1cm) seam.



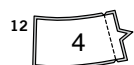
- 9.** Press seam toward pocket, pressing pocket out.



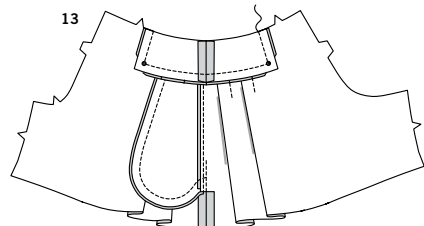
- 10.** Pin front to back at side seam, matching large dots. Stitch side seam, leaving an opening between large dots. Stitch pocket edges together to side seam.



- 11.** Clip back seam allowance below pockets. Press seam open below clip. Press pocket toward front. Baste across upper edge.

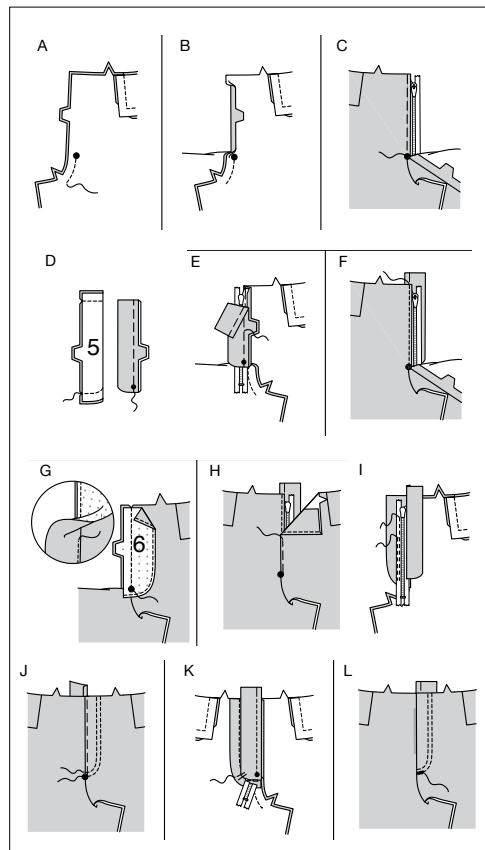


- 12.** For each side, stitch two YOKE FRONT AND BACK (4) sections together at notched edge.



- 13.** With RIGHT sides together, pin yoke front and back to upper edge of front and back, matching small dots and side seams. Stitch. Trim seam. Press seam toward pants.

14



ZIPPER AND CARRIERS

- 14.** Construct fly front as follows:

A- Stitch front sections together at center front between large dot and notch.

B- Turn in right front opening edge along foldline; press.

C- Place closed zipper (face up) under right front opening edge, having pressed edge close to zipper teeth and zipper stop at small dot. Taper upper edge of zipper tape toward right front. Using a zipper foot, baste close to pressed edge.

D- With RIGHT sides together, fold RIGHT FLY (5) along foldline. Stitch upper and lower edges. Trim. Turn. Press. Baste raw edges.

E- On inside, pin right fly to right front opening edge (over zipper), matching notches and small dots, having raw edges even. Baste along previous basting for zipper. NOTE: Right fly will extend past upper edge.

F- On outside, using a zipper foot, stitch close to pressed edge of front through all layers.

G- FINISH outer edge of LEFT FLY FACING (6). Pin fly facing to left front opening edge, matching notches, and large dots. Stitch, ending at large dot. Trim. **UNDERSTITCH** fly facing. Turn facing to inside.

H- Lap left front over right, matching centers. Baste close to edge through all thicknesses.

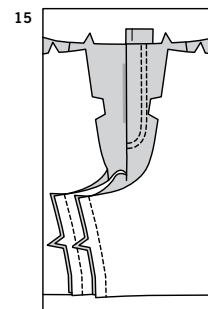
I- Pin right fly out of the way. Open out fly facing. Pin remaining zipper tape to fly facing, keeping left front free. Using a zipper foot, stitch in place close to zipper teeth and along center of zipper tape.

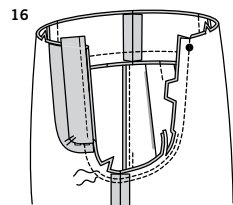
J- Turn facing down. On outside, stitch left front along stitching line, keeping right fly free. Stitch again 1/4" (6mm) away inside previous stitching.

K- Turn right fly back in place. On inside, hand tack fly and facing together at lower edge, as shown. Trim away excess zipper tape even with lower edge of fly, if needed.

L- If desired, on outside, machine-stitch a bar tack across lower end of fly through all thicknesses.

- 15.** Stitch front and back together at inner leg edge.





16. For crotch seam, turn one pant leg right side out; slip inside remaining pant leg. Stitch, connecting to previous stitching in front. Stitch again 1/4" (6mm) away in seam allowance along curve. Trim close to second stitching.



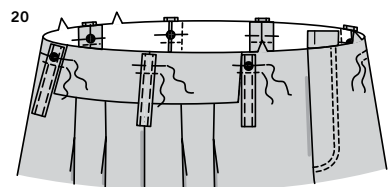
17. Turn in 1/4" (6mm) on long edges of CARRIER (7); press.



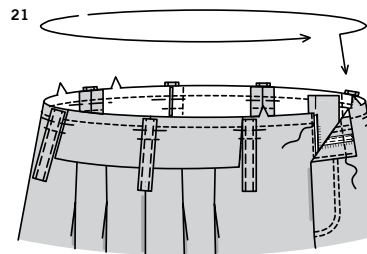
18. With WRONG sides together, fold carriers in half lengthwise, having edges even; press. **EDGE STITCH** long edges, as shown.



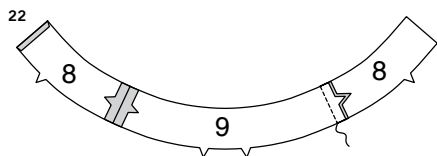
19. Cut carriers into seven sections, each 3 3/4" (9.5cm) long.



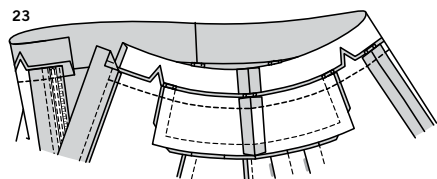
20. On OUTSIDE, pin carriers to upper edge of pants, centering one end over large dots and at side seams, having raw edges even, as shown. Baste along waist seamline. Stitch carriers in place 1/2" (1.3cm) below basting.



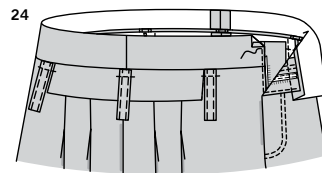
21. **STAYSTITCH** upper edge of garment in direction of arrows.



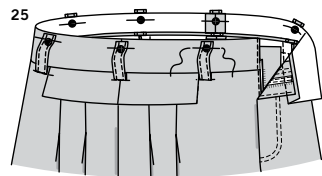
22. Stitch uninterfaced FRONT WAISTBAND (8) sections to uninterfaced BACK WAISTBAND (9) at sides. Fold right waistband along foldline. Press.
NOTE: interfaced waistband sections will be used as facing.



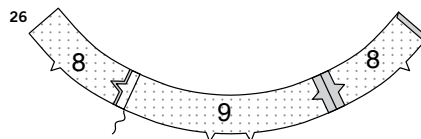
23. With RIGHT sides together, pin waistband to upper edge of pants, matching centers, seams and notches, clipping garment where necessary. Baste. Stitch. Trim. Press seam toward waistband.



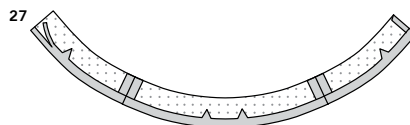
24. Baste waistband to right fly. **EDGE STITCH** pressed edge.



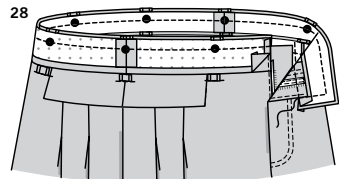
25. Turn up carriers over waistband, centering remaining end over large dots, having raw edges even. Baste.



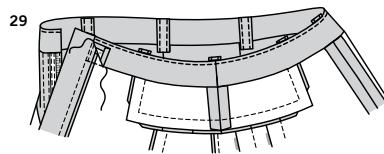
26. Stitch FRONT WAISTBAND (8) facing sections to BACK WAISTBAND (9) facing at sides. Fold right waistband along foldline. Press.



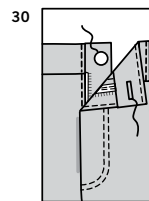
27. Press under seam allowance on lower edge of waistband facing. Press, easing in fullness where necessary. Trim pressed seam allowance to 3/8" (1cm).



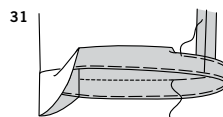
28. With RIGHT sides together, pin waistband facing to waistband, matching centers and seams. Stitch upper and left front edges. Trim. **UNDERSTITCH** facing.



29. Turn facing to inside. Press. **SLIPSTITCH** pressed edges over seams.



30. Make buttonhole in left waistband at marking. Sew button to right fly at small dot.



31. Mark garment length. Press up hem along marking. Mark depth of hem; trim evenly. Press under 1/4" (6mm) on raw edge. Stitch close to inner pressed edge.



Congrats!

You've completed your sewing adventure

SHARE YOUR LOOK



Post your pattern and tag us
@simplicity_creative_group and **#simplicitypatterns**
for a chance to be featured on our social media.

Look for more PDF patterns at [simplicity.com](https://www.simplicity.com)

Have a question or need help with your sewing project call us at
1-888-588-2700



Simplicity ©2024 a division of IG Design Group Americas Inc. • Atlanta, GA 30342 USA www.thedesigngroup.com • All Rights Reserved. www.simplicity.com • Made in the U.S.A. Fabriqué aux États-Unis.

To be used for individual private home use only and not for commercial or manufacturing purposes. • A usage privé seulement et non à des fins commerciales ou de production en série. • Para uso privado solamente, no se puede utilizar con propósitos de comercialización o de producción en serie.