

S9954

Simplicity



A



B



C

Designed and printed in USA.



Average

MISSES' SKIRTS

Suggested Fabrics: Chambray, Cotton Blends, Lightweight Twill, Linen Blends, Poplin, Ripstop Nylon. **Lining:** Cotton Blends, Polyester Blends. **Interfacing:** Lightweight Fusible.

Notions: A,B,C: 3½ yds. (3.2m) of ¾" (2cm) elastic, two grommets with a ¾" (1cm) opening, ½" (1.3cm) twill tape or ribbon: ¼ yd. (0.7m) for A, ½ yd. (0.8m) for B, 6½ yds. (5.8m) for C. ¼" (6mm) elastic: 1½ yds. (1.3m) for A, 1½ yd. (1.5m) for B,C. **Also for C:** Two ¾" (1.5cm) buttons.

Sizes	6	8	10	12	14	16	18	20	22	24
European	32	34	36	38	40	42	44	46	48	50

BODY MEASUREMENTS: Select pattern size based on body measurements

Bust	30½	31½	32½	34	36	38	40	42	44	46	Ins.
Waist	23	24	25	26½	28	30	32	34	37	39	"
Hip-9" below waist	32½	33½	34½	36	38	40	42	44	46	48	"
Back-neck to waist	15½	15¾	16	16¼	16½	16¾	17	17¼	17½	17¾	"

Interfacing A,B,C - 20" - ¾ yd.

Skirt A	45**	2	2	2	2½	2½	2½	2½	2½	2½	2½	Yds.
	60**	1½	1½	1½	1½	1½	1½	1½	1½	1½	1½	"
Lining	45***	1½	1½	1½	1½	1½	1½	1½	1½	1½	1½	"
Skirt B	45**	3%	3%	3%	3%	3%	3%	3%	3%	3%	3%	Yds.
	60**	3	3	3	3½	3½	3½	3½	3½	3½	3½	"
Lining B,C	45***	2	2½	2½	2½	2½	2½	2½	2½	2½	2½	Yds
Skirt C	45**	3%	3%	3%	3%	3%	3%	3%	4	4	4%	Yds.
	60**	3%	3½	3½	3½	3%	3%	3%	3%	3%	3%	"

FINISHED GARMENT MEASUREMENTS (Includes Design and Wearing Ease)

Finished back length from waist (approx.)

Skirt A (sits 1" below waist)	20½	20½	20½	20½	20½	20½	20½	20½	20½	20½	20½	Ins.
Skirt B,C (sits 1" below waist)	37½	37½	37½	37½	37½	37½	37½	37½	37½	37½	37½	Ins.

*with nap **without nap

Moins Facile

JUPES POUR JEUNES FEMMES

Tissus Conseillés: Chambray, Cottonnades, Twill léger, Lin mélangés, Popeline, Nylon indéchirable. **Doubleure:** Cottonnades, Mélanges de polyester. **Entoilage:** Thermocollant léger.

Mercerie: A,B,C: 3.2m d'élastique de 2cm, 2 œillets avec ouverture de 1cm, talonnette de coton ou de ruban de 1.3cm: 0.7m pour A, 0.8m pour B, 5.8m pour, d'élastique de 6mm: 1.3m pour A, 1.5m pour B,C. **Aussi pour C:** 2 boutons de 1.5cm.

Tailles	6	8	10	12	14	16	18	20	22	24
Françaises	34	36	38	40	42	44	46	48	50	52
Europèen	32	34	36	38	40	42	44	46	48	50

MESURES DU CORPS: Choisissez la taille du patron basée sur les mesures du corps

Poitrine	78	80	83	87	92	97	102	107	112	117	cm
Taille	58	61	64	67	71	76	81	87	94	99	"
Hanches (23cm au-dessous de la taille)	83	85	88	92	97	102	107	112	117	122	cm
Dos du cou à la taille	39.5	40	40.5	41.5	42	42.5	43	44	44	44.5	"

Entoilage A,B,C - 51cm - 0.3m

Jupe A	115cm*	1.8	1.8	1.8	1.8	1.9	1.9	1.9	1.9	1.9	2.1	m
	150cm*	1.5	1.5	1.5	1.6	1.6	1.6	1.6	1.6	1.7	1.7	"
Doubleure	115cm**	1.0	1.0	1.0	1.0	1.0	1.0	1.0	1.0	1.0	1.0	"
Jupe B	115cm*	3.1	3.1	3.1	3.1	3.2	3.2	3.3	3.3	3.4	3.4	m
	150cm*	2.7	2.7	2.7	2.9	2.9	3.0	3.0	3.0	3.1	3.1	"
Doubleure B,C	115cm**	1.8	1.8	1.8	1.8	1.8	1.8	1.9	1.9	1.9	1.9	m
Jupe C	115cm*	3.3	3.3	3.4	3.4	3.4	3.5	3.5	3.7	3.7	3.8	m
	150cm*	3.1	3.1	3.2	3.2	3.2	3.3	3.3	3.4	3.4	3.5	"

MESURES DES VÊTEMENTS FINI (Motif et aisance de port compris)

Longueur finie – dos, taille à l'ourlet (environ)

Jupe A (repose 2.5cm dessous de la taille)	52	52	52	52	52	52	52	52	52	52	52	cm
Jupe B,C (repose 2.5cm dessous de la taille)	95	95	95	95	95	95	95	95	95	95	95	cm

*avec sens **sans sens



A



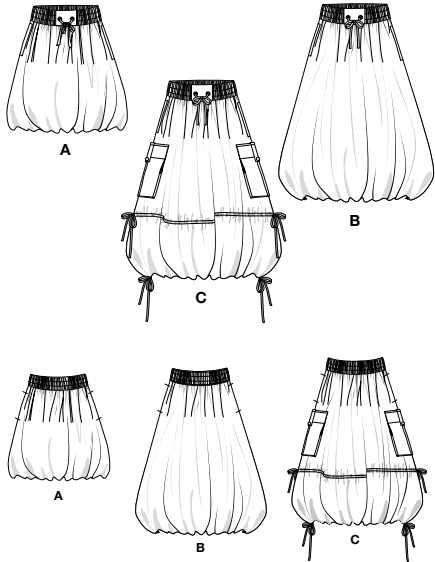
B



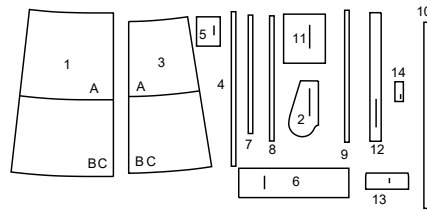
C

Simplicity®

Thank you for purchasing this Simplicity pattern. We made every effort to provide you with a high quality product.



14 PIECES



- 1 Front and Back-A,B,C
- 2 Pocket-A,B,C
- 3 Front and Back Lining-A,B,C
- 4 Elastic Guide for Lower Edge-A
- 5 Front Tab-A,B,C
- 6 Casing-A,B,C
- 7 Elastic Guide Upper-A,B,C
- 8 Elastic Guide Middle-A,B,C
- 9 Elastic Guide Lower-A,B,C
- 10 Elastic Guide for Lower Edge-B,C
- 11 Lower Pocket-C
- 12 Patch Pocket Gusset-C
- 13 Flap-C
- 14 Tab-C

General Directions

The Pattern

- SYMBOLS**
- ↔ GRAIN LINE Place on straight grain of fabric parallel to selvage
 - ⇄ PLACE SOLID LINE on fold of fabric.
 - - - - CENTER FRONT OR BACK of garment.
 - ∇ NOTCHES
 - ○ DOTS
 - CUTTING LINE
 - == LENGTHEN OR SHORTEN LINES

SEAM ALLOWANCE: 5/8" (1.5cm) unless otherwise stated is included but not printed on MULTI-SIZE PATTERNS. Mark your size with colored felt tip pen. See chart on tissue for how to use MULTI-SIZE PATTERNS.

ADJUST IF NEEDED

Make adjustments before placing pattern on fabric.

TO LENGTHEN: Cut pattern between lengthen or shorten lines. Spread pattern evenly, the amount needed and tape to paper.

TO SHORTEN: At lengthen or shorten lines, make an even pleat taking up amount needed. Tape in place.

When lengthen or shorten lines are not given, make adjustments at lower edge of pattern.

Cutting/Marking

BEFORE CUTTING:

PRESS pattern pieces with a warm dry iron. PRE-SHRINK fabric by pre-washing washables or steam-pressing non-washables.

CIRCLE your cutting layout.

PIN pattern to fabric as shown in Cutting Layouts.

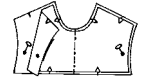
- FOR DOUBLE THICKNESS: Fold fabric with RIGHT sides together.
- FOR SINGLE THICKNESS: Place fabric RIGHT side up.
- FOR PILE, SHADED OR ONE WAY DESIGN FABRICS: Use "with nap" layouts

AFTER CUTTING:

Transfer markings to WRONG side of fabric before removing pattern. Use pin and chalk method or dressmaker's tracing paper and wheel.

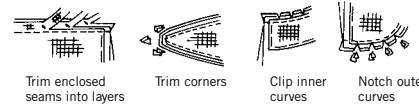
To Quick Mark:

- Snip edge of fabric to mark notches, ends of fold lines and center lines.
- Pin mark dots.



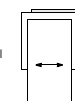
Sewing

- SEW garment following Sewing Directions.
- PIN or machine-baste seams matching notches.
- STITCH 5/8" (1.5 cm) seams unless otherwise stated.
- PRESS seams open unless otherwise indicated clipping when necessary so seams will lie flat.
- TRIM seams to reduce bulk, as shown below.

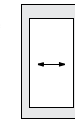


SPECIAL CUTTING NOTES

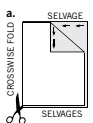
★ If layout shows a piece extending past fold, cut out all pieces except piece that extends.



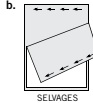
Open out fabric to single thickness. Cut extending piece on RIGHT side of fabric in position shown.



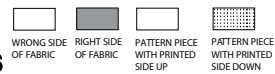
✱ Mark small arrows along both selvages indicating direction of nap or design. Fold fabric crosswise with RIGHT sides together, and cut along fold (a).



Turn one fabric layer around so arrows on both layers go in the same direction. Place RIGHT sides together (b).



Cutting Layouts



POSITION OF PATTERN PIECES MAY VARY SLIGHTLY ACCORDING TO YOUR PATTERN SIZE

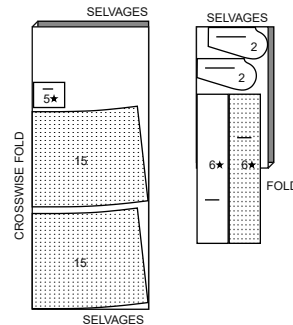
INTERFACING A, B

USE PIECE 5

20" (51CM)
ALL SIZES



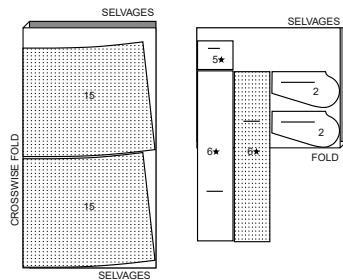
60" (150CM)
WITH NAP
ALL SIZES



SKIRT A

USE PIECES 1 2 5 6

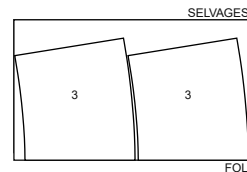
45" (115CM)
WITH NAP
ALL SIZES



LINING A

USE PIECE 3

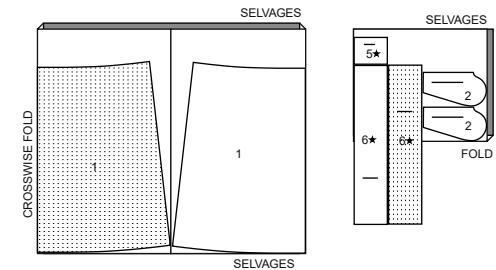
45" (115CM)
WITH NAP
ALL SIZES



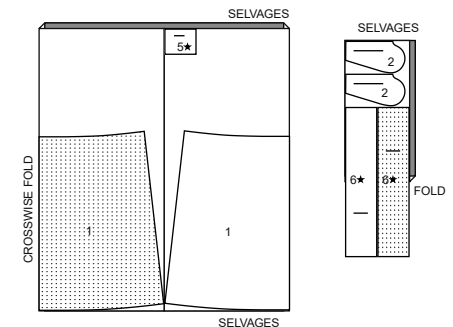
SKIRT B

USE PIECES 1 2 5 6

45" (115CM)
WITH NAP
ALL SIZES



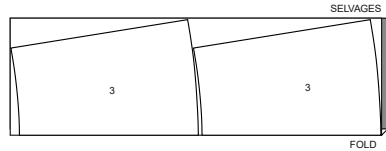
60" (150CM)
WITH NAP
ALL SIZES



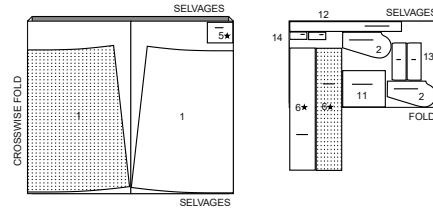
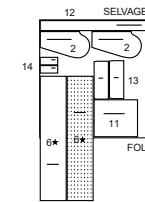
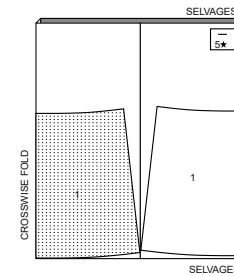
CUTTING LAYOUTS CONTINUED ON PAGE 2

LINING B, C

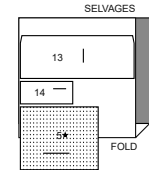
USE PIECE 3

45" (115CM)
WITH NAP
ALL SIZES**SKIRT C**

USE PIECES 1 2 5 6 11 12 13 14

45" (115CM)
WITH NAP
ALL SIZES60" (150CM)
WITH NAP
ALL SIZES**INTERFACING C**

USE PIECES 5 13 14

20" (51CM)
ALL SIZES

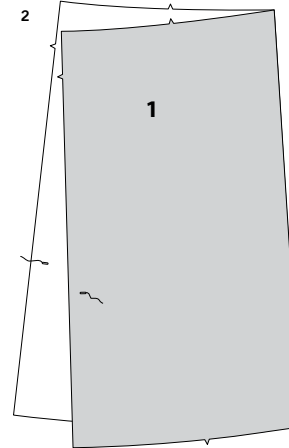
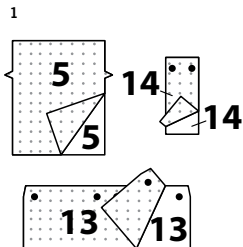
SEWING TUTORIALS

Build your skills viewing short, easy-to-follow videos at [simplicity.com/sewingtutorials](https://www.simplicity.com/sewingtutorials)**Sewing Directions**

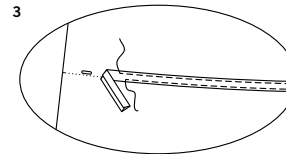
FABRIC KEY

Read **General Directions** on page 1 before you begin.Read **General Directions** on page 1 before you begin. → Sewing methods in **BOLD TYPE** have Sewing Tutorial Video available. Scan **QR CODE** to watch videos:**GATHER** – see **Gathering: “sewing two row gathers”** video**EDGE STITCH** – see **Machine Stitches: “how to sew an edgestitch”** video**TOPSTITCH** – see **Machine Stitches: “how to topstitch”** video**TRIM SEAM** – see **Seams: “how to trim, clip and layer seams”** video**UNDERSTITCH** – see **Machine Stitches: “how to understitch”** video**PATTERN PIECES WILL BE IDENTIFIED BY NUMBERS THE FIRST TIME THEY ARE USED.****STITCH 5/8" (1.5CM) SEAMS WITH RIGHT SIDES TOGETHER UNLESS OTHERWISE STATED.****SKIRT A, B, C****NOTE:** Skirt is designed to be worn 1" (2.5cm) below waistline.

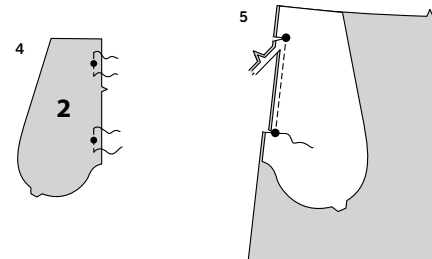
1. Pin interfacing to **WRONG** side of **FRONT TAB (5)** for **all views**, and additionally to **FLAP (13)** and **TAB (14)** for **View C**. Fuse interfacing in place following manufacturer's directions.



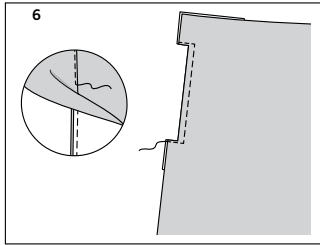
2. **FOR VIEW C** – Make buttonholes on **FRONT AND BACK (1)** sections at markings.



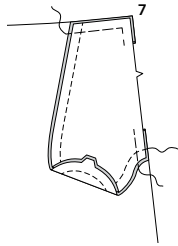
3. Cut a piece of 1/2" (1.3cm) single fold bias tape the length of the casing line for front and back sections. On **INSIDE**, pin lower edge of tape along casing line. Stitch in place close to long edges.

CONTINUE AS FOLLOWS FOR ALL VIEWS

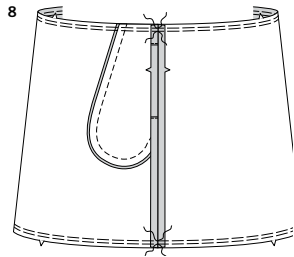
4. To reinforce front **POCKET (2)** (facing) at large dots, stitch along seam line for about 1" (2.5cm) each side of dots, stitching through dots, as shown.
5. With right sides together, pin pocket to front section of **FRONT AND BACK (1)**, matching large dots, having raw edges even. Stitch between large dots. **TRIM SEAM.**



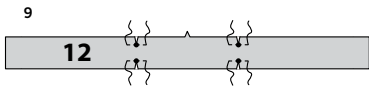
6. UNDERSTITCH the pocket. Turn pocket to inside; press, pressing out remaining seam allowance. **TOPSTITCH** finished edge of pocket, squaring stitching at opening ends.



7. With right sides together and raw edges even, pin pocket to pocket facing, matching notches. Stitch long curved edge. Baste raw edges together.

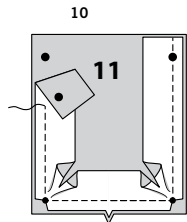


8. Stitch front to back at side edges, being careful not to catch in finished edge of front pocket. Press seam open. **GATHER** upper and lower edges of skirt breaking stitching at seams.

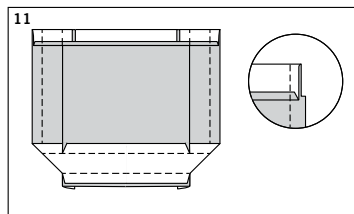


LOWER POCKET, FLAP, AND TAB C

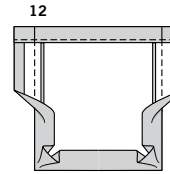
9. To reinforce PATCH POCKET GUSSET (12) at small dots, stitch along seam line for about 1" (2.5cm) each side of small dots, stitching through dots, as shown. Clip to stitching at dots.



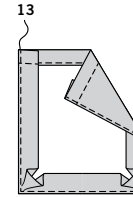
10. With RIGHT sides together and raw edges even, pin pocket gusset to LOWER POCKET (11), matching large dots, small dots and notches. Stitch. Press seam toward pocket, pressing out fullness at corners.



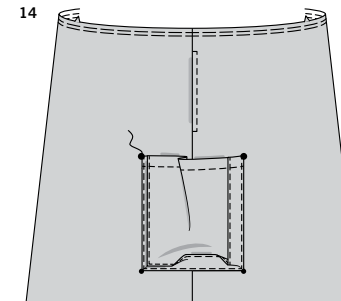
11. Press under 1/4" (6mm) on upper edge of pocket and gusset. Turn upper edge to OUTSIDE along fold line, forming facing. Stitch along seam line on raw edges. Trim seam allowance in the facing area to 1/4" (6mm).



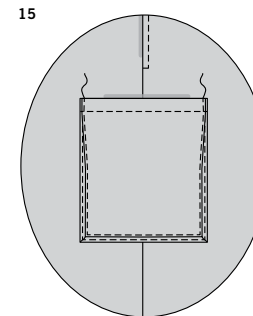
12. Turn corners RIGHT side out, turning facing to the WRONG side; press, pressing under raw edges along stitching. Stitch facing close to inner edge.



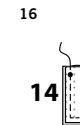
13. On OUTSIDE, **EDGE**STITCH pocket close to finished edge.



14. On OUTSIDE, pin pocket gusset to front and back along pocket line, matching large and small dots. **EDGE**STITCH close to side and lower edges.



15. Fold gusset through center, bringing large and small dots together. Press. **EDGE**STITCH side edges from upper edge of pocket to facing stitching through all thicknesses, over previous stitching.



16. Pin two TAB (14) sections with RIGHT sides together. Stitch, leaving marked end open. **TRIM SEAM.**

17



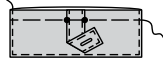
17. Turn tab; press. **EDGESTITCH** finished edges. Make buttonhole at marking.

18



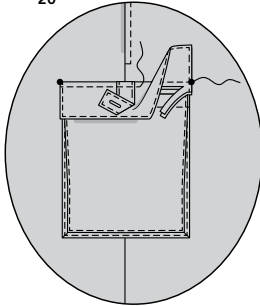
18. With **RIGHT** sides together, stitch facing to **FLAP (13)**, leaving edge with small dots open. **TRIM SEAM.**

19



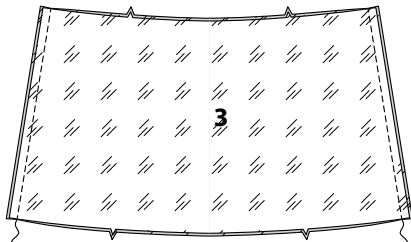
19. Turn flap; press. Machine-baste $5/8$ " (1.5cm) from raw edge. On **OUTSIDE**, **EDGESTITCH** close to finished edges. Pin tab to flap, matching inner small dots. Baste.

20



20. On **OUTSIDE**, pin flap to skirt, placing basting along flap line, matching small dots, as shown. Stitch along basting. Trim close to stitching. Turn flap down; press. **TOPSTITCH** close to upper edge.

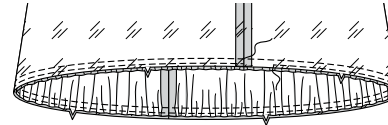
21



CONTINUE AS FOLLOWS FOR ALL VIEWS

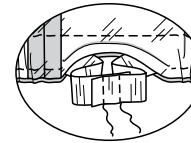
21. Stitch **FRONT AND BACK LINING (3)** sections together at side edges.

22



22. With **RIGHT** sides together and raw edges even, pin lining to skirt along lower edges, matching centers and seams, pulling up gathering stitches to fit. Stitch. To form casing for elastic, stitch again $3/8$ " (1cm) from first stitching within the seam allowance, leaving an opening to insert elastic.

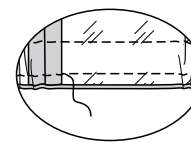
23



23. Cut a piece of $1/4$ " (6mm) elastic the length of the **ELASTIC GUIDE FOR LOWER EDGE (4)** for **View A**, or the **ELASTIC GUIDE FOR LOWER EDGE (10)** for **View B,C**.

Insert elastic through opening in casing. Stitch ends of elastic together, securely.

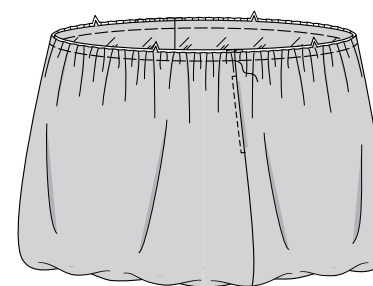
24



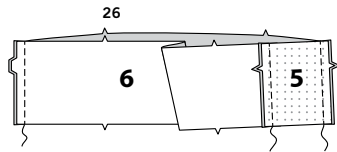
24. Stitch opening in casing closed. Distribute gathers evenly.

TIP – To secure elastic so it won't twist in wearing, stitch through all thicknesses of casing in the groove of each seam.

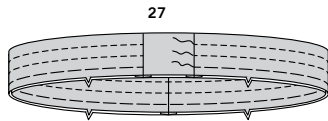
25



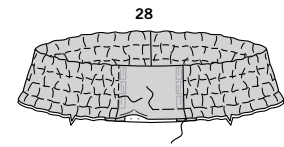
25. Turn lining to **INSIDE**; press. Pin lining to skirt along upper edge, matching seams and notches, pulling up gathering stitches to fit. Baste.



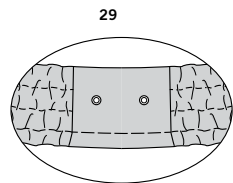
26. Stitch center back edges of CASING (6). Stitch front ends of casing to FRONT TAB (5).



27. Fold casing and tab in half, lengthwise with WRONG sides together. Press. Baste notched edge, leaving an opening in front tab for inserting elastic. Stitch casing along stitching lines between front seams.

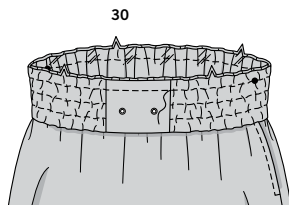


28. Cut a piece of 3/4" (2cm) elastic the length of each guide, ELASTIC GUIDE UPPER (7), ELASTIC GUIDE MIDDLE (8), ELASTIC GUIDE LOWER (9). Through opening in front tab, insert elastic pieces through each corresponding level casing, at the same time, (which is easier than one at a time). Bring marked ends to front seams. Stitch over front seams through all thicknesses. Baste opening in front tab closed.

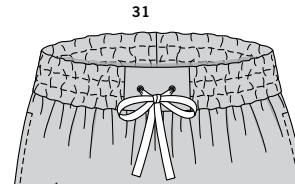


29. Apply grommets to front tab at small dots by creating openings with an awl or embroidery scissors, placing grommets on a hard surface, and hitting the grommet setter with a mallet to ensure even setting.

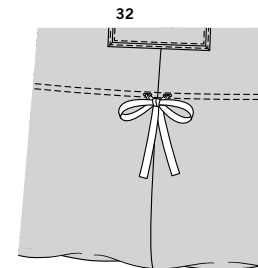
TIP – Practice applying grommets on a fabric remnant before applying to garment.



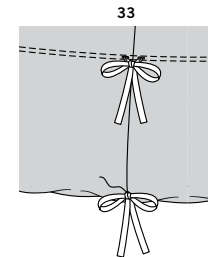
30. With RIGHT sides together and raw edges even, pin lower edge of casing and tab to upper edge of skirt, matching centers and notches, placing small dot at side seam. Stitch. Press seam toward skirt, pressing casing out.



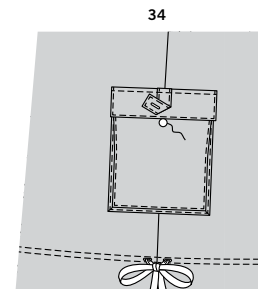
31. To form front tie, cut a piece of twill tape or ribbon 23" (59cm) long. On INSIDE, thread ends through grommets, bringing ends to OUTSIDE. Tie into bow.



32. FOR VIEW C – Cut two pieces of twill tape or ribbon the length of the bias tape casing line, plus 24" (61cm). Thread ends of one piece through front bias casing, entering and exiting buttonhole openings. Thread second piece through back bias casing in the same manner. Bring ends to side seams evenly. Tie into bow.



33. Cut two pieces of twill tape or ribbon 35" (89cm) long. Pin center of each to a side seam at lower small dot. Stitch along seam line. Tie into a bow.



34. Sew button to lower pocket under tab.



Congrats!

You've completed your sewing adventure

**SHARE
YOUR** LOOK



Post your pattern and tag us
@simplicity_creative_group and **#simplicitypatterns**
for a chance to be featured on our social media.

Look for more PDF patterns at [simplicity.com](https://www.simplicity.com)

Have a question or need help with your sewing project call us at
1-888-588-2700



Simplicity ©2024 a division of IG Design Group Americas Inc. • Atlanta, GA 30342 USA www.thedesigngroup.com • All Rights Reserved. www.simplicity.com • Made in the U.S.A. Fabriqué aux États-Unis.

To be used for individual private home use only and not for commercial or manufacturing purposes. • A usage privé seulement et non à des fins commerciales ou de production en série. • Para uso privado solamente, no se puede utilizar con propósitos de comercialización o de producción en serie.