

S9952

Simplicity

easy-to-sew



A



B



C



Designed and
printed in USA.



B

Easy

MISSES' SHIRTS

Suggested Fabrics: Batiks, Chambray, Cotton Blends, Gauze, Lightweight Denim, Linen Blends, Poplin, Shirtings, Twill. **Interfacing:** Lightweight Fusible.

Notions: A,B,C: ¾" (1.5cm) buttons: six for A, eight for B, nine for C.

Sizes	S	M	L	XL	XXL
	8-10	12-14	16-18	20-22	24-26
European	34-36	38-40	42-44	46-48	50-52

BODY MEASUREMENTS: Select pattern size based on body measurements

Bust	31½-32½	34-36	38-40	42-44	46-48	Ins.
Waist	24-25	26½-28	30-32	34-37	39-41½	"
Hip-9" below waist	33½-34½	36-38	40-42	44-46	48-50	"
Back-neck to waist	15¾-16	16¼-16½	16¾-17	17¼-17½	17¾-18	"

Shirt A	45** 1½	1¾	1¾	2	2½	Yds.
	60** 1¾	1½	1¾	1¾	1¾	"
Interfacing	20" - ¾ yd.					

Shirt B	45** 2¾	2¾	2¾	3	3¼	Yds.
	60** 2¾	2¾	2¾	2¾	2½	"
Interfacing	20" - 1½ yds.					

Shirt C	45** 2¾	3	3	3½	3½	Yds.
	60** 2¾	2½	2½	2½	2¾	"
Interfacing	20" - 1½ yds.					

FINISHED GARMENT MEASUREMENTS (Includes Design and Wearing Ease)

A,B,C Bust	51	54½	58½	62½	66½	Ins.
------------	----	-----	-----	-----	-----	------

Width, lower edge

Shirt A,B	55	58½	62½	66½	70½	Ins.
Shirt C	62	65½	69½	73½	77½	"

Finished back length from base of neck

Shirt A,B	21	21½	22	22½	23	Ins.
Shirt C	27	27½	28	28½	29	"

*with nap **without nap

Facile

CHEMISES POUR JEUNES FEMMES

Tissus Conseillés: Batiks, Chambray, Cottonnades, Gaze, Denim léger, Toile de lin mélangés, Popeline, Shirtings, Twill. **Entoilage:** Thermocollant léger.

Mercerie: A,B,C: boutons de 1.5cm: 6 pour A, 8 pour B, 9 pour C.

Tailles	P/S	M/M	G/L	TG/XL	TTG/XXL
Françaises	36-38	40-42	44-46	48-50	52-54
Européen	34-36	38-40	42-44	46-48	50-52

MESURES DU CORPS: Choisissez la taille du patron basée sur les mesures du corps

Poitrine	80-83	87-92	97-102	107-112	117-122	cm
Taille	61-64	67-71	76-81	87-94	99-105	"
Hanches (23cm au-dessous de la taille)	85-88	92-97	102-107	112-117	122-127	cm

Dos du cou à la taille

Chemise A	115cm* 1.5	1.6	1.7	1.8	2.2	m
	150cm* 1.3	1.4	1.5	1.6	1.6	"

Entoilage

Chemise B	115cm* 2.5	2.6	2.6	2.7	3.0	m
	150cm* 2.1	2.1	2.2	2.2	2.2	"

Entoilage

Chemise C	115cm* 2.6	2.7	2.7	3.2	3.2	m
	150cm* 2.2	2.2	2.3	2.3	2.4	"

Entoilage

Chemise C	115cm* 2.6	2.7	2.7	3.2	3.2	m
	150cm* 2.2	2.2	2.3	2.3	2.4	"

Entoilage

MESURES DES VÊTEMENTS FINI (Motif et aisance de port compris)

A,B,C Poitrine	130	138	149	159	169	cm
----------------	-----	-----	-----	-----	-----	----

Largeur à l'ourlet

Shirt A,B	140	149	159	169	179	cm
Shirt C	157	166	177	187	197	"

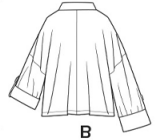
Longueur finie – dos, votre nuque à l'ourlet

Shirt A,B	53	55	56	57	58	cm
Shirt C	69	70	71	72	74	"

*avec sens **sans sens



A



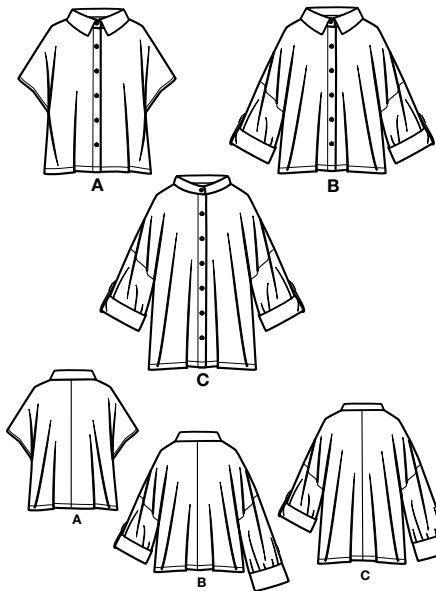
B



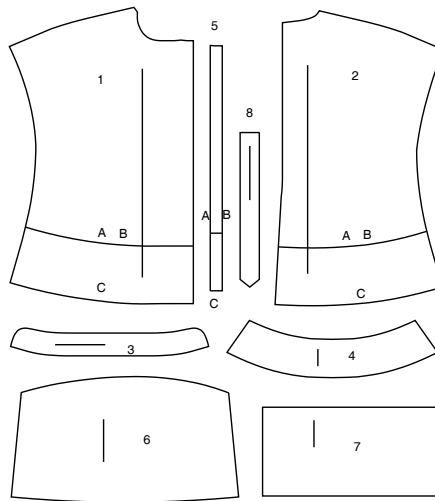
C

Simplicity®

Thank you for purchasing this Simplicity pattern.
We made every effort to provide you with a high quality product.



8 PIECES



1 FRONT - A,B,C
2 BACK - A,B,C
3 NECKBAND - A,B,C
4 COLLAR - A,B
5 GUIDE FOR BUTTONHOLES - A,B,C
6 SLEEVE - B,C
7 SLEEVE BAND - B,C
8 TAB - B,C



www.simplicity.com



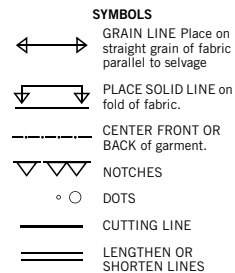
info@simplicity.com



1-888-588-2700

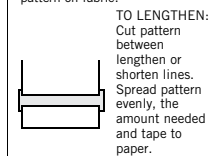
General Directions

The Pattern



SEAM ALLOWANCE: 5/8" (1.5cm)
unless otherwise stated is included but not printed on MULTI-SIZE PATTERNS.
Mark your size with colored felt tip pen.
See chart on tissue for how to use MULTI-SIZE PATTERNS.

ADJUST IF NEEDED
Make adjustments before placing pattern on fabric.



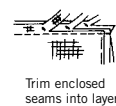
TO LENGTHEN:
Cut pattern between lengthen or shorten lines. Spread pattern evenly, the amount needed and tape to paper.

TO SHORTEN:
At lengthen or shorten lines, make an even pleat taking up amount needed. Tape in place.

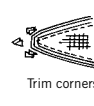
When lengthen or shorten lines are not given, make adjustments at lower edge of pattern.

Sewing

- SEW garment following **Sewing Directions**.
- PIN or machine-baste seams matching notches.
- STITCH 5/8" (1.5 cm) seams unless otherwise stated.
- PRESS seams open unless otherwise indicated clipping when necessary so seams will lie flat.
- TRIM seams to reduce bulk, as shown below.



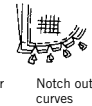
Trim enclosed seams into layers



Trim corners



Clip inner curves



Notch outer curves

Cutting/Marking

BEFORE CUTTING:

PRESS pattern pieces with a warm dry iron. PRE-SHRINK fabric by pre-washing washables or steam-pressing non-washables.

CIRCLE your cutting layout.

PIN pattern to fabric as shown in Cutting Layouts.

• FOR DOUBLE THICKNESS: Fold fabric with RIGHT sides together.

• FOR SINGLE THICKNESS: Place fabric RIGHT side up.

• FOR PILE, SHADED OR ONE WAY DESIGN FABRICS: Use "with nap" layouts

AFTER CUTTING:

Transfer markings to WRONG side of fabric before removing pattern. Use pin and chalk method or dressmaker's tracing paper and wheel.

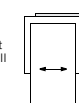
To Quick Mark:

- Snip edge of fabric to mark notches, ends of fold lines and center lines.
- Pin mark dots.



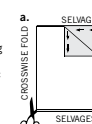
SPECIAL CUTTING NOTES

★ If layout shows a piece extending past fold, cut out all pieces except piece that extends.

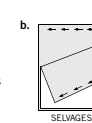


Open out fabric to single thickness. Cut extending piece on RIGHT side of fabric in position shown.

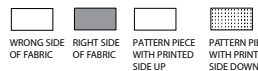
✱ Mark small arrows along both selvages indicating direction of nap or design. Fold fabric crosswise with RIGHT sides together, and cut along fold (a).



Turn one fabric layer around so arrows on both layers go in the same direction. Place RIGHT sides together (b).



Cutting Layouts

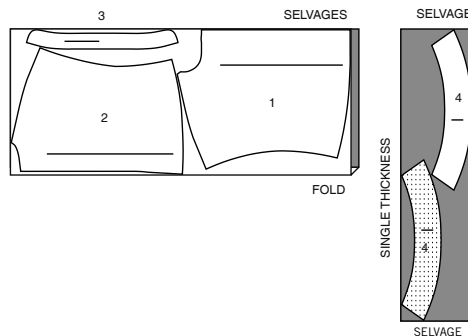


POSITION OF PATTERN PIECES MAY VARY SLIGHTLY ACCORDING TO YOUR PATTERN SIZE

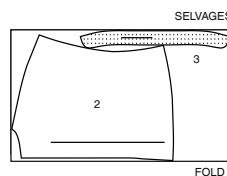
SHIRT A

USE PIECES 1 2 3 4

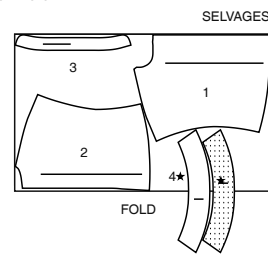
45" (115CM)
WITH NAP
SIZES S M L



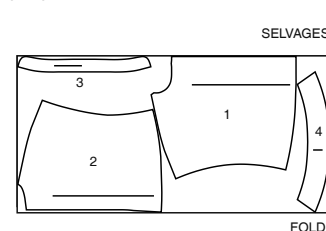
45" (115CM)
WITH NAP
SIZES XL XXL



60" (150CM)
WITH NAP
SIZES S M



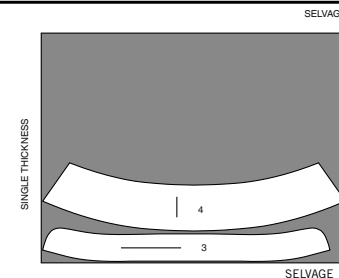
60" (150CM)
WITH NAP
SIZES L XL XXL



INTERFACING

USE PIECES 3 4

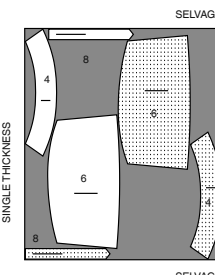
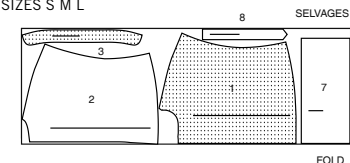
20" (51CM)
ALL SIZES



SHIRT B

USE PIECES 1 2 3 4 6 7 8

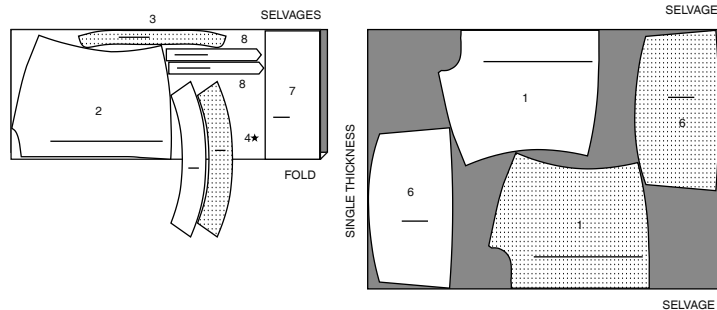
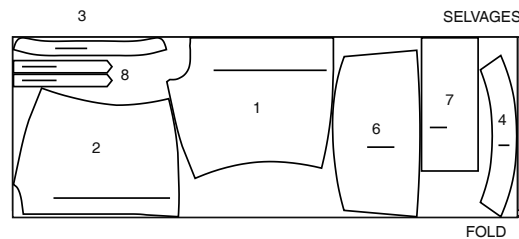
45" (115CM) WITH NAP
SIZES S M L



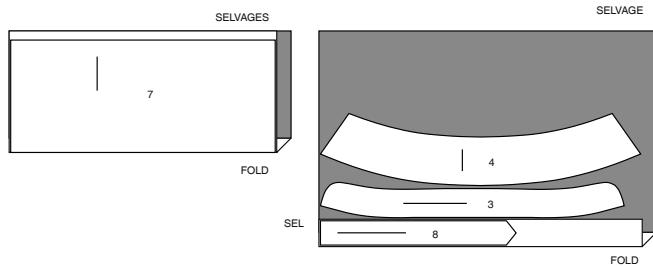
CUTTING LAYOUTS CONTINUED ON PAGE 2

S9952

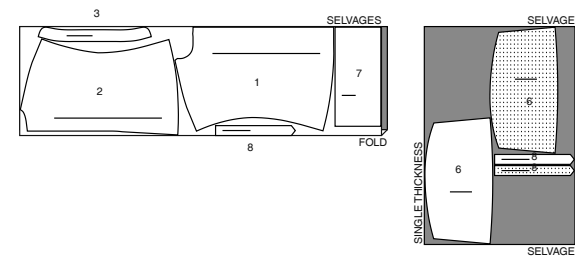
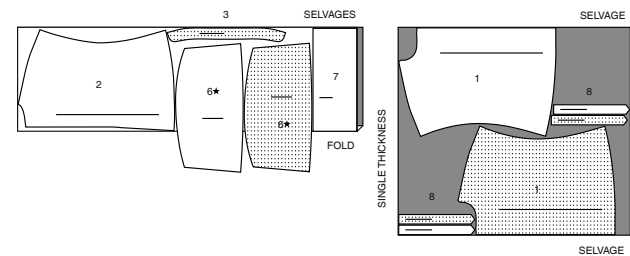
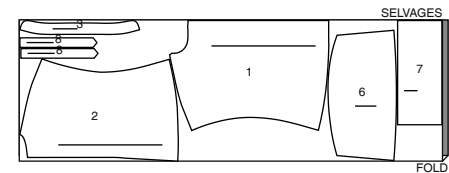
2 of 4

45" (115CM)
WITH NAP
SIZES XL XXL60" (150CM)
WITH NAP
ALL SIZES**INTERFACING**

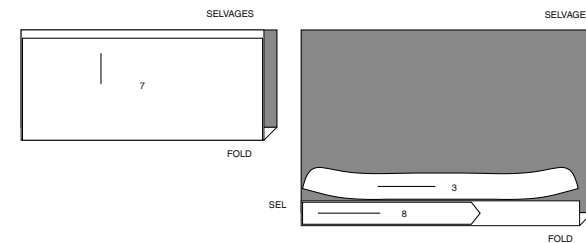
USE PIECES 3 4 7 8

20" (51CM)
ALL SIZES**SHIRT C**

USE PIECES 1 2 3 6 7 8

45" (115CM)
WITH NAP
SIZES S M L45" (115CM)
WITH NAP
SIZES XL XXL60" (150CM)
WITH NAP
ALL SIZES**INTERFACING**

USE PIECES 3 7 8

20" (51CM)
ALL SIZES**Sewing Directions**

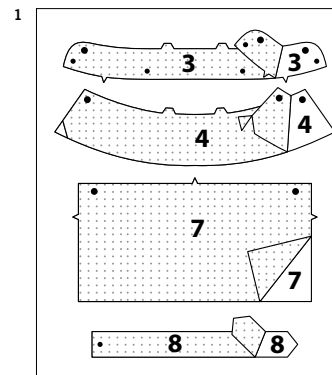
FABRIC KEY RIGHT SIDE WRONG SIDE INTERFACING LINING Lining

Read **General Directions** on page 1 before you begin.Sewing methods in **BOLD TYPE** have Sewing Tutorial Video available. Scan QR CODE to watch videos:**GATHER** - See "sewing gathers" video.**NARROW HEM** - See Hems: "sewing narrow hems" video.**STAYSTITCH** - See Machine Stitches: "how to do stay-stitching"**UNDERSTITCH** - See Machine Stitches: "how to understitch" video.

SEWING TUTORIALS

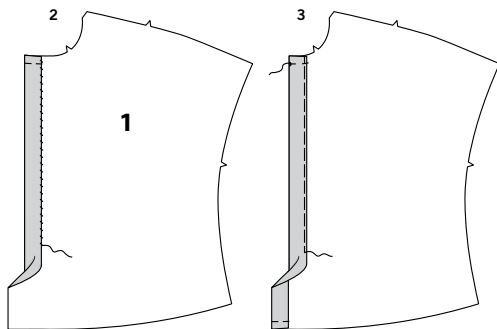


SCAN ME

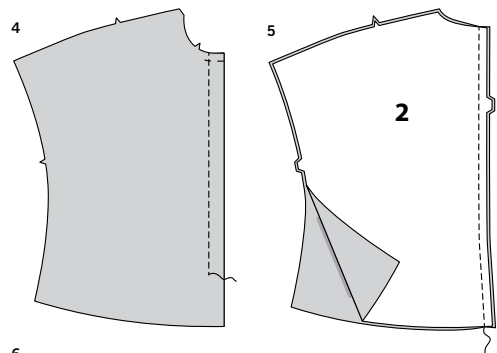
Build your skills viewing short, easy-to-follow videos at
[simplicity.com/sewingtutorials](https://www.simplicity.com/sewingtutorials)**PATTERN PIECES WILL BE IDENTIFIED BY NUMBERS THE FIRST TIME THEY ARE USED.****STITCH SEAMS WITH RIGHT SIDES TOGETHER UNLESS OTHERWISE STATED.****NOTE:** Under each sub-heading, the first view will be illustrated, unless otherwise illustrated.**SHIRT A, B, C**
INTERFACING

1. Trim corners of INTERFACING, as shown. Fuse interfacing to wrong side of each matching FABRIC section, following manufacturer's instructions.

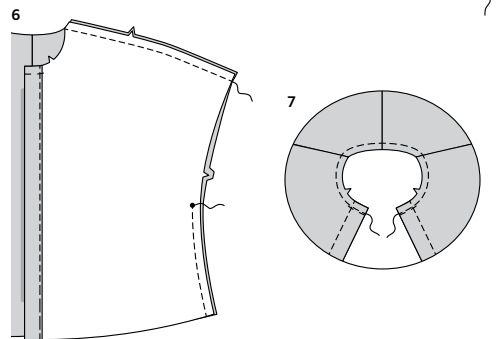
FRONT AND BACK



- 2.** Turn opening edge of Front (1) to wrong side along foldline for interfacing; press. Baste raw edges together. Sew invisibly along inner edge.
- 3.** Turn front self-facing to wrong side along foldline for facing; press. Baste across upper raw edge. Baste close to long inner edge, as shown.



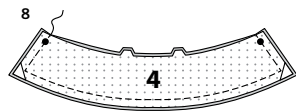
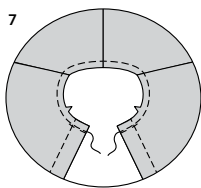
- 4.** On outside, stitch front along stitching line to within 4"(10cm) of lower edge, as shown.
- 5.** With right sides together, pin Back (2) sections. Stitch center back seam.



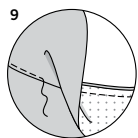
- 6.** Stitch back to front at overarm. Stitch back to front at underarm, matching small dots. Stitch from lower edge to small dot.

COLLAR A, B

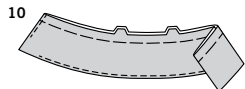
- 7.** STAYSTITCH neck edge.



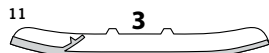
- 8.** Stitch Collar (4) sections, right sides together, leaving edge with large dots open. Trim seams.



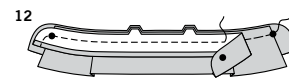
- 9.** UNDERSTITCH finished edges of collar as far as possible.



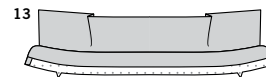
- 10.** Turn right side out; press. Baste raw edges.



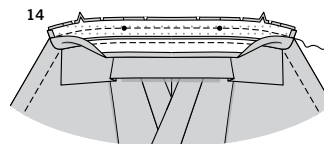
- 11.** Turn under 5/8"(1.5cm) on single notched edge of uninterfaced Neckband (3) section. Press, easing in fullness. Trim pressed edge to 3/8"(1cm).



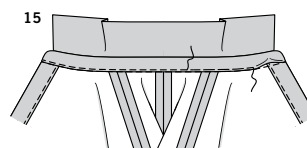
- 12.** Pin uninterfaced side of collar to interfaced neck band, matching notches, centers backs and large dots.
Pin uninterfaced neck band over collar; baste. Stitch, leaving neck edge open. Trim seam.



- 13.** Turn right side out; press.

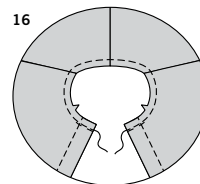


- 14.** Pin band to neck edge, right sides together, matching notches, center backs, outer small dots and center dots to overarm seams, clipping neck curve of shirt where necessary. Baste. Stitch, keeping pressed edge free. Trim seam; press toward band.

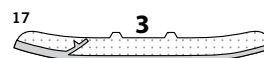


- 15.** Baste band close to inner pressed edge. Stitch along basting.

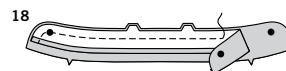
NECK BAND C



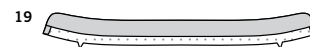
- 16.** STAYSTITCH neck edge.



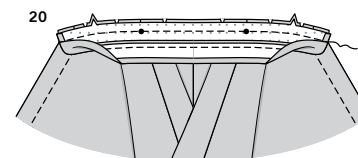
- 17.** Press under 5/8"(1.5cm) on single notched edge of interfaced Neckband (3) section, easing in fullness. Trim pressed edge to 3/8"(1cm).



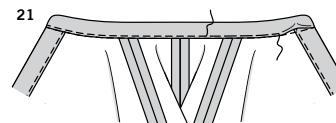
- 18.** Stitch neck band sections, right sides together, leaving single notched edge open. Trim seams.



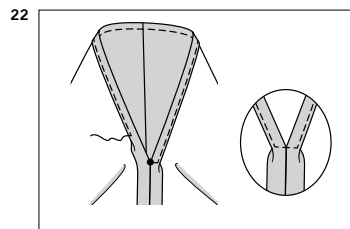
- 19.** Turn band right side out; press.



- 20.** Pin band to neck edge, matching center backs and small dots, clipping shirt neck edge where necessary. Stitch, keeping pressed edge free. Trim seam. Press seam toward band.



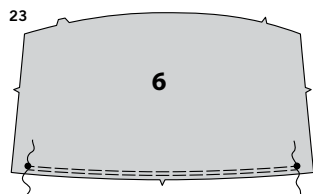
- 21.** Baste band close to inner pressed edge. Stitch along basting.



SLEEVE FINISH A

- 22.** Press up 5/8" (1.5cm) hem allowance on upper side edge of shirt.
To form **NARROW HEM**, tuck under raw edge to meet crease; press. Stitch hem in place, squaring stitching at dot.

SLEEVE B, C



- 23.** GATHER lower edge of Sleeve (6) between large dots.

- 24.** For each tab, pin one uninterfaced Tab (8) section to one interfaced section, right sides together. Stitch in 3/8" (1cm) seam, leaving short straight end free. Trim seams.

- 25.** Turn tab right side out; press. Baste raw edges. Make buttonhole in tab at marking.

- 26.** Pin uninterfaced side of tab to wrong side of sleeve at upper edge, matching center small dot. Baste.

- 27.** Stitch sleeve seam, from lower edge to small dot.

- 28.** Stitch seam of Sleeve band (7), matching notches.

- 29.** Press under 5/8" (1.5cm) on unnotched edge of band. Trim pressed edge to 3/8" (1cm).

- 30.** Pin band to lower edge of sleeve, right sides together, matching notches, dots and seams. Adjust gathers; baste. Stitch; trim seams.

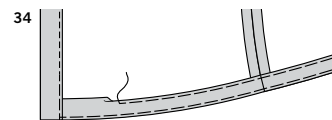
- 31.** Press seam toward band. Fold band along foldline. Baste band close to inner pressed edge. Stitch along basting.

- 32.** With right sides together, pin sleeve into armhole with center small dot at overarm seam, matching notches and remaining small dots. Baste; stitch. Stitch again 1/8" (3mm) away in seam allowance. Trim close to second stitching. Turn seams toward shirt.

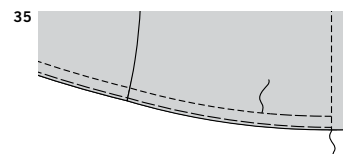
FINISHING

HEM

- 33.** Turn lower edge of front self facing to outside along foldline. Stitch 1-1/4" (3.2cm) from lower edge. Trim seam, as shown. Turn self facings to inside again; press.

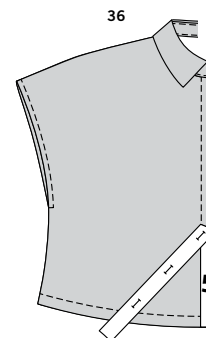


- 34.** Turn up a 1-1/4" (3.2cm) hem on remainder of lower edge of shirt. Baste close to fold. Turn under 1/4" (6mm) on raw edge, easing in fullness, if necessary. Baste hem in place close to upper edge; press.



- 35.** On outside, topstitch remainder of front edge along stitching line, connecting with previous topstitching. Stitch hem along upper basting, ending at front stitching.

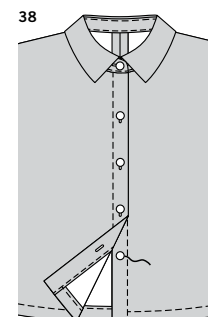
BUTTONHOLES AND BUTTONS



- 36.** Place Guide for buttonholes (5) on right front, matching center fronts, having edges of tissue even with finished edges of shirt, as shown. Transfer markings.

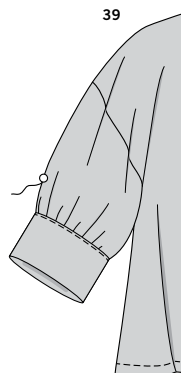


- 37.** Make buttonholes in right front at markings. Make buttonhole in right end of neck band at marking.

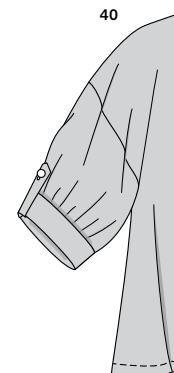


- 38.** Lap right front over left, matching centers. Using buttonholes as guides, make button markings on left front. Sew buttons at markings. Sew button to left end of neck band at marking.

VIEWS B, C



- 39.** On outside, sew one button to each sleeve at small dot.



- 40.** When wearing, fold sleeve band in half forming cuff, bringing tab to outside and fasten button.



Congrats!

You've completed your sewing adventure

SHARE YOUR LOOK



Post your pattern and tag us
@simplicity_creative_group and **#simplicitypatterns**
for a chance to be featured on our social media.

Look for more PDF patterns at [simplicity.com](https://www.simplicity.com)

Have a question or need help with your sewing project call us at
1-888-588-2700



Simplicity ©2024 a division of IG Design Group Americas Inc. • Atlanta, GA 30342 USA www.thedesigngroup.com • All Rights Reserved. www.simplicity.com • Made in the U.S.A. Fabriqué aux États-Unis.

To be used for individual private home use only and not for commercial or manufacturing purposes. • A usage privé seulement et non à des fins commerciales ou de production en série. • Para uso privado solamente, no se puede utilizar con propósitos de comercialización o de producción en serie.