

S9951

**Simplicity**

easy-to-sew



A



B



C

Designed and printed in USA.



Easy

Facile

**MISSES' TOP IN TWO LENGTHS**

**Suggested Fabrics:** Batiks, Batiste, Charmeuse, Cotton Blends, Cotton Lawn, Dotted Swiss, Gauze, Gingham, Linen Blends, Seersucker, Shirting, Silky Types, Voile.

**Notions: A,B,C:** One pkg. of ½" (1.3cm) single fold bias tape. **Also for A:** 3½ yds. (3.1m) of ½" - ¾" (1.3cm - 2cm) purchased lace trim.

<b>Sizes</b>	8	10	12	14	16	18	20	22	24	26
<b>European</b>	34	36	38	40	42	44	46	48	50	52

**BODY MEASUREMENTS: Select pattern size based on body measurements**

<b>Bust</b>	31½	32½	34	36	38	40	42	44	46	48	Ins.
<b>Waist</b>	24	25	26½	28	30	32	34	37	39	41½	"
<b>Hip-9" below waist</b>	33½	34½	36	38	40	42	44	46	48	50	"
<b>Back-neck to waist</b>	15¼	16	16¼	16½	16¾	17	17¼	17¾	17½	17¾	"

<b>Top A</b>	45**	2½	2½	2¼	2¼	2½	2½	2½	2½	2½	Yds.
	60**	1½	1½	1½	1½	1¾	1¾	1¾	1¾	2	"

<b>Top B</b>	45**	1	1	1	1	1½	1½	1½	1½	1¼	Yds.
	60**	¾	¾	1	1	1½	1½	1½	1½	1¼	"

<b>Contrast (Lower Front and Back)</b>	45**	1½	1½	1½	1½	1½	1½	1½	1½	1½	Yds.
	60**	¾	¾	¾	¾	¾	¾	¾	¾	¾	"

<b>Top C</b>	45**	2½	2½	2½	2½	2¾	2¾	2¾	2¾	3	Yds.
	60**	2	2½	2½	2½	2½	2½	2¾	2¾	2¾	"

**FINISHED GARMENT MEASUREMENTS (Includes Design and Wearing Ease)**

<b>Finished back length from base of neck</b>											
<b>Top A,B</b>	17¼	18	18¼	18½	18¾	19	19¼	19½	19¾	20	Ins.
<b>Top C</b>	20¼	21	21¼	2½	21¾	22	22¼	22½	22¾	23	"

\*with nap \*\*without nap

**HAUT EN DEUX LONGUEURS POUR JEUNES FEMMES**

**Tissus Conseillés:** Batiks, Batiste, Charmeuse, Cotonnades, Linon de coton, Plumetis, Gaze, Vichy, Toile de lin mélangés, Seersucker, Shirting, Tissus soyeux, Voile.

**Mercerie: A,B,C:** 1 paquet de ruban de biais simple de 1.3cm. **Aussi pour A:** 3.1m de garniture de dentelle achetée de 1.3cm - 2cm.

<b>Tailles</b>	8	10	12	14	16	18	20	22	24	26
<b>Françaises</b>	36	38	40	42	44	46	48	50	52	54
<b>Européen</b>	34	36	38	40	42	44	46	48	50	52

**MESURES DU CORPS: Choisissez la taille du patron basée sur les mesures du corps**

<b>Poitrine</b>	80	83	87	92	97	102	107	112	117	122	cm
<b>Taille</b>	61	64	67	71	76	81	87	94	99	106	"
<b>Hanches (23cm au-dessous de la taille)</b>	85	88	92	97	102	107	112	117	122	127	cm
<b>Dos du cou à la taille</b>	40	40.5	41.5	42	42.5	43	44	44	44.5	44.5	"

<b>Haut A</b>	115cm*	1.9	1.9	2.1	2.1	2.2	2.2	2.2	2.3	2.3	2.4	m
	150cm*	1.3	1.4	1.5	1.5	1.6	1.6	1.6	1.7	1.7	1.7	"

<b>Haut B</b>	115cm*	0.9	0.9	0.9	0.9	0.9	1.0	1.0	1.0	1.0	1.1	m
	150cm*	0.8	0.8	0.9	0.9	0.9	1.0	1.0	1.0	1.0	1.1	"

<b>Contraste (Devant et dos inférieur)</b>	115cm*	1.3	1.3	1.3	1.3	1.3	1.4	1.4	1.4	1.4	1.4	m
	150cm*	0.7	0.7	0.7	0.7	0.7	0.7	0.7	0.8	0.8	0.8	"

<b>Haut C</b>	115cm*	2.3	2.3	2.3	2.4	2.4	2.5	2.5	2.6	2.6	2.7	m
	150cm*	1.8	1.9	1.9	2.1	2.2	2.3	2.4	2.5	2.5	2.6	"

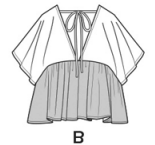
**MESURES DES VÊTEMENTS FINI (Motif et aisance de port compris)**

<b>Longueur finie – dos, votre nuque à l'ourlet</b>											
<b>Haut A,B</b>	45	46	46	47	48	48	49	50	50	51	cm
<b>Haut C</b>	53	53	54	55	55	56	57	57	58	58	"

\*avec sens \*\*sans sens



A



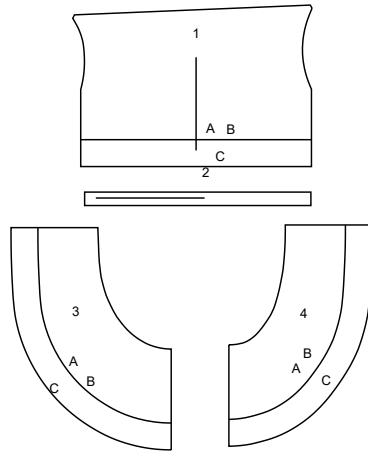
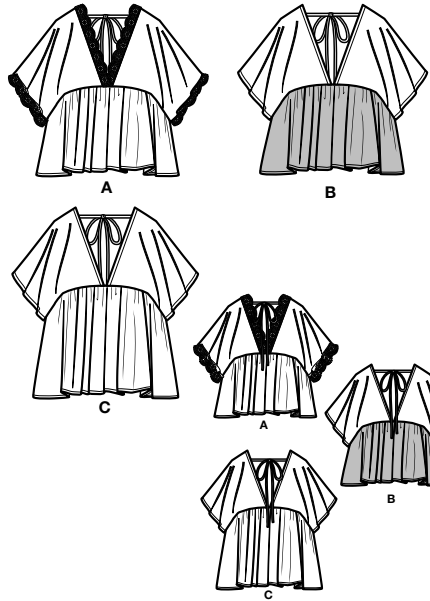
B



C

# Simplicity®

Thank you for purchasing this Simplicity pattern. We made every effort to provide you with a high quality product.



- 1 BODICE FRONT AND BACK - A,B,C
- 2 TIE END - A,B,C
- 3 LOWER FRONT - A,B,C
- 4 LOWER BACK - A,B,C

## General Directions

### The Pattern

- SYMBOLS**
- ↔ GRAIN LINE Place on straight grain of fabric parallel to selvage
  - ⇄ PLACE SOLID LINE on fold of fabric.
  - CENTER FRONT OR BACK of garment.
  - ∇ NOTCHES
  - DOTS
  - CUTTING LINE
  - == LENGTHEN OR SHORTEN LINES

SEAM ALLOWANCE: 5/8" (1.5cm) unless otherwise stated is included but not printed on MULTI-SIZE PATTERNS. Mark your size with colored felt tip pen. See chart on tissue for how to use MULTI-SIZE PATTERNS.

**ADJUST IF NEEDED**  
Make adjustments before placing pattern on fabric.

**TO LENGTHEN:**  
Cut pattern between lengthen or shorten lines. Spread pattern evenly, the amount needed and tape to paper.

**TO SHORTEN:**  
At lengthen or shorten lines, make an even pleat taking up amount needed. Tape in place.

When lengthen or shorten lines are not given, make adjustments at lower edge of pattern.

### Cutting/Marking

**BEFORE CUTTING:**  
PRESS pattern pieces with a warm dry iron. PRE-SHRINK fabric by pre-washing washables or steam-pressing non-washables.

CIRCLE your cutting layout.

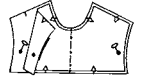
PIN pattern to fabric as shown in Cutting Layouts.

- FOR DOUBLE THICKNESS: Fold fabric with RIGHT sides together.
- FOR SINGLE THICKNESS: Place fabric RIGHT side up.
- FOR PILE, SHADED OR ONE WAY DESIGN FABRICS: Use "with nap" layouts

**AFTER CUTTING:**  
Transfer markings to WRONG side of fabric before removing pattern. Use pin and chalk method or dressmaker's tracing paper and wheel.

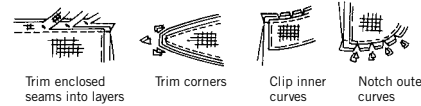
#### To Quick Mark:

- Snip edge of fabric to mark notches, ends of fold lines and center lines.
- Pin mark dots.



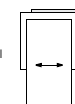
### Sewing

- SEW garment following **Sewing Directions**.
- PIN or machine-baste seams matching notches.
- STITCH 5/8" (1.5 cm) seams unless otherwise stated.
- PRESS seams open unless otherwise indicated clipping when necessary so seams will lie flat.
- TRIM seams to reduce bulk, as shown below.



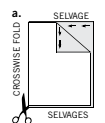
### SPECIAL CUTTING NOTES

★ If layout shows a piece extending past fold, cut out all pieces except piece that extends.

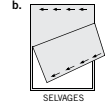


Open out fabric to single thickness. Cut extending piece on RIGHT side of fabric in position shown.

✱ Mark small arrows along both selvages indicating direction of nap or design. Fold fabric crosswise with RIGHT sides together, and cut along fold (a).



Turn one fabric layer around so arrows on both layers go in the same direction. Place RIGHT sides together (b).



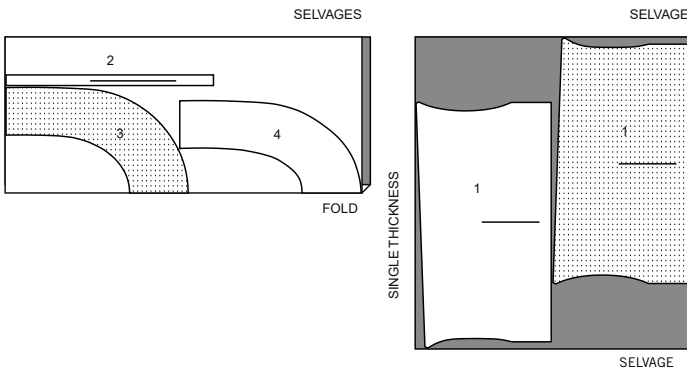
## Cutting Layouts

- WRONG SIDE OF FABRIC
- RIGHT SIDE OF FABRIC
- PATTERN PIECE WITH PRINTED SIDE UP
- PATTERN PIECE WITH PRINTED SIDE DOWN
- ★ SEE SPECIAL CUTTING NOTES

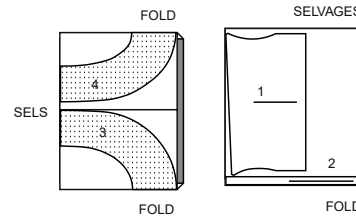
POSITION OF PATTERN PIECES MAY VARY SLIGHTLY ACCORDING TO YOUR PATTERN SIZE

### TOP A

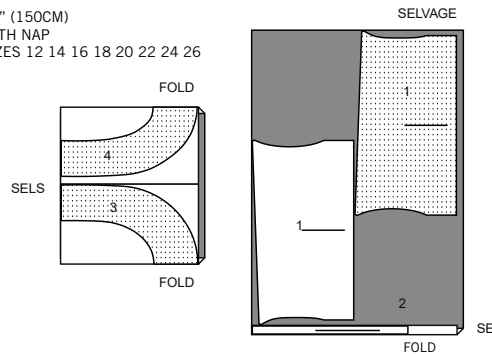
USE PIECES 1 2 3 4  
45" (115CM) WITH NAP  
ALL SIZES



60" (150CM) WITH NAP  
SIZES 8 10

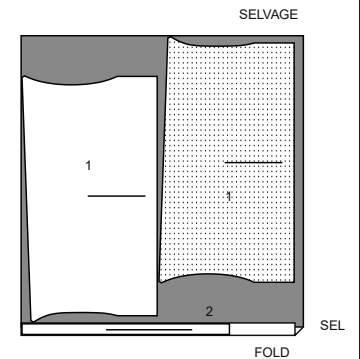


60" (150CM) WITH NAP  
SIZES 12 14 16 18 20 22 24 26

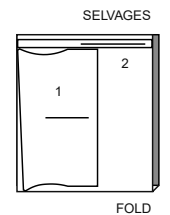


### TOP B

USE PIECES 1 2  
45" (115CM) WITH NAP  
ALL SIZES



60" (150CM) WITH NAP  
SIZES 8 10

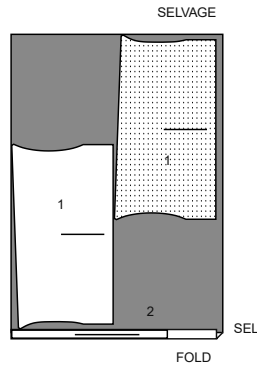


CUTTING LAYOUTS CONTINUED ON PAGE 2

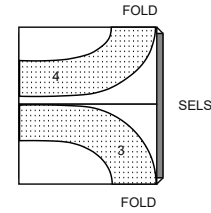
S9951

2 of 3

60" (150CM)  
WITH NAP  
SIZES 12 14 16 18 20 22 24 26



60" (150CM)  
WITH NAP  
ALL SIZES

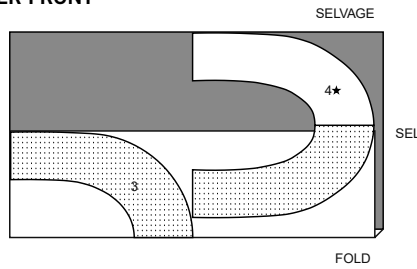


60" (150CM)  
WITH NAP  
ALL SIZES

**CONTRAST (LOWER FRONT AND BACK)**

USE PIECES 3 4

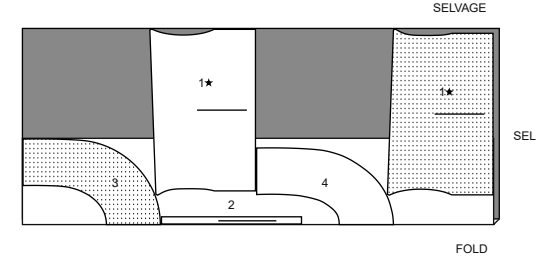
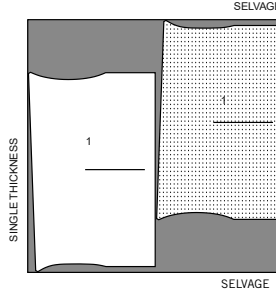
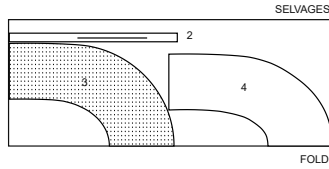
45" (115CM)  
WITH NAP  
ALL SIZES



**TOP C**

USE PIECES 1 2 3 4

45" (115CM) WITH NAP  
ALL SIZES



**Sewing Directions**



Read **General Directions** on page 1 before you begin.

Sewing methods in **BOLD TYPE** have Sewing Tutorial Video available. Scan QR CODE to watch videos:

**EASE/GATHER** - see Gathering: "sewing two row gathers" video.

**NARROW HEM** - see Hems: "sewing narrow hems" video.

**UNDERSTITCH** - see Machine Stitches: "how to understitch" video.

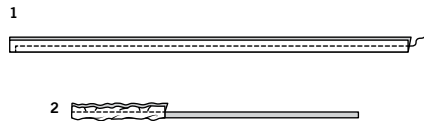
**FINISH** - see Seams: "how to finish seam allowances" video.

**SLIPSTITCH** - Slide needle through a folded edge, then pick up a thread of underneath fabric.

**TOP A, B, C**

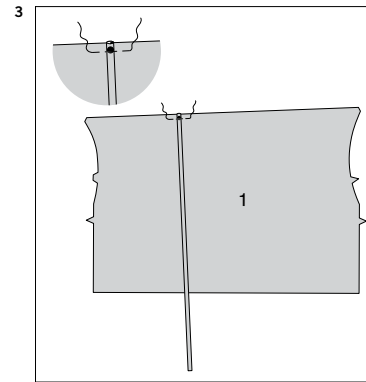
**BODICE FRONT AND BACK**

**TIE ENDS**



**1.** Fold Tie end (2) in half, lengthwise, with right sides together. Stitch in 3/8"(1cm) seam, leaving one short end open.

**2.** Turn tie end **RIGHT** side out. Press; baste raw edges.

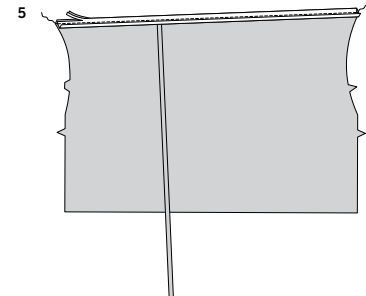


**3.** On **OUTSIDE**, pin tie end to each Bodice front and back (1), centering over center small dots, having raw edges even. Baste.



**BIAS TAPE FACING**

**4.** Open out one edge of single fold bias tape.



**5.** With right sides together, pin tape to upper edge of Bodice front and back, having crease 3/8"(1cm) from raw edge. Stitch in 3/8"(1cm) seam; trim seam.

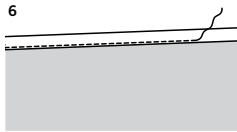
SEWING TUTORIALS



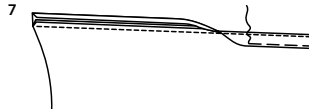
Build your skills viewing short, easy-to-follow videos at [simplicity.com/sewingtutorials](http://simplicity.com/sewingtutorials)

S9951

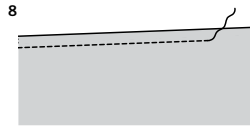
3 of 3



**6. UNDERSTITCH** by pressing tape and seam away from bodice, stitching through tape and seam allowances close to seam.

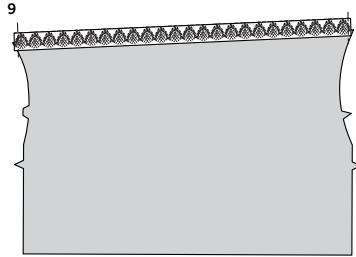


**7.** Turn tape to **INSIDE**, turning tie ends out; press. Baste close to inner edge of tape.



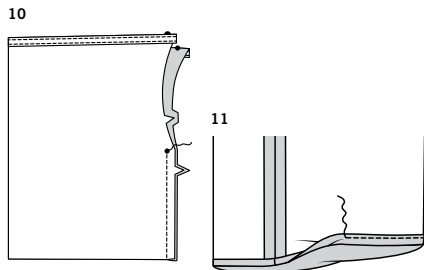
**8.** On **OUTSIDE**, top-stitch as basted.

#### VIEW A-NECK LACE TRIM



**9.** With right sides up, pin lace trim to bodice neck edge, having straight edge just over bias tape stitching and scalloped edge outward. Stitch along straight edge of lace. Baste ends of lace to bodice.  
For clarity purposes, View A neck trim will not be shown in future illustrations.

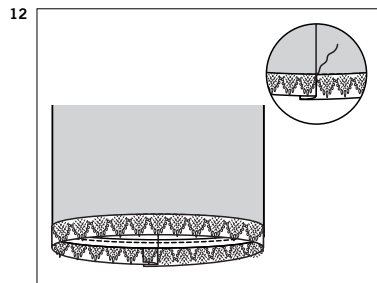
#### HEM



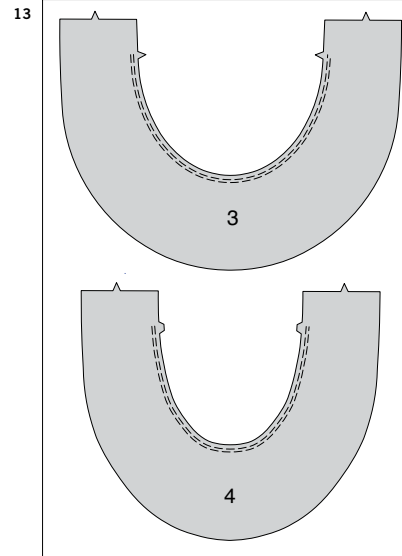
**10.** Pin bodice right sides together, matching notches and small dots. Stitch underarm seam from lower edge to small dot. Backstitch at small dot to secure.

**11.** Press up 5/8" (1.5cm) hem on lower edge of bodice/sleeve. To form **NARROW HEM**, tuck under raw edge to meet crease; press. Stitch hem in place.

#### VIEW A-SLEEVE LACE TRIM

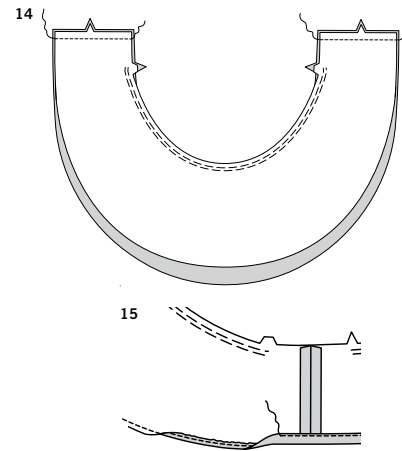


**12.** With right sides up, pin lace trim to lower edge of sleeve section of bodice, having straight edge just over hem stitching and scalloped edge outward, turning under one end over remaining end at seam. Stitch along straight edge of lace. **SLIPSTITCH** ends of lace together.



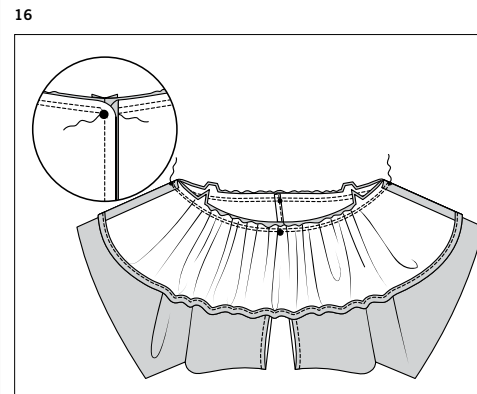
#### LOWER FRONT AND BACK

**13.** To **GATHER** upper edge of Lower front (3) and Lower back (4) between notches, stitch along seam line and 1/4" (6mm) **INSIDE** seam line, using a long machine-stitch.



**14.** With right sides together, pin lower back to lower front at sides.

**15.** Stitch 1/4" (6mm) from lower edge of lower section, using long machine stitches, as shown. Turn up a 5/8" (1.5cm) hem at lower edge of lower section, turning under 1/4" (6mm) on raw edge. Pull thread to ease in fullness; stitch.



#### ATTACHING LOWER SECTION TO BODICE

**16.** With right sides together, pin lower section to bodice, matching notches, seams, large dots to lower front and small dots to lower back. Adjust gathers; baste. Stitch, breaking stitching at small dots on bodice seams. Stitch again 1/4" (6mm) away in seam allowance. Trim close to second stitching. Turn seams toward bodice, turning lower section down.



# Congrats!

You've completed your sewing adventure

---

**SHARE  
YOUR** LOOK



Post your pattern and tag us  
**@simplicity\_creative\_group** and **#simplicitypatterns**  
for a chance to be featured on our social media.

Look for more PDF patterns at [simplicity.com](https://www.simplicity.com)

Have a question or need help with your sewing project call us at  
1-888-588-2700



Simplicity ©2024 a division of IG Design Group Americas Inc. • Atlanta, GA 30342 USA [www.thedesigngroup.com](http://www.thedesigngroup.com) • All Rights Reserved. [www.simplicity.com](http://www.simplicity.com) • Made in the U.S.A. Fabriqué aux États-Unis.

To be used for individual private home use only and not for commercial or manufacturing purposes. • A usage privé seulement et non à des fins commerciales ou de production en série. • Para uso privado solamente, no se puede utilizar con propósitos de comercialización o de producción en serie.