

S9950

Simplicity®



A



B



C

Designed and
printed in USA.

B

Average

MISSES' DRESS WITH SLEEVE AND LENGTH VARIATIONS

Suggested Fabrics: Chambray, Cotton Blends, Cotton Lawns, Linen Blends, Poplin, Rayon.

Lining: Cotton Blends, Polyester Blends. Interfacing: Lightweight Fusible.

Notions: A,B,C: One 14" (36cm) invisible zipper. Also for A,B: ¼ yd. (0.6m) of ¼" (6mm) elastic.

Sizes	8	10	12	14	16	18	20	22	24	26
European	34	36	38	40	42	44	46	48	50	52

BODY MEASUREMENTS: Select pattern size based on body measurements

Bust	31½	32½	34	36	38	40	42	44	46	48	Ins.
Waist	24	25	26½	28	30	32	34	37	39	41½	"
Hip-9" below waist	33½	34½	36	38	40	42	44	46	48	50	"
Back-neck to waist	15¼	16	16¼	16½	16¾	17	17¼	17½	17¾	17¾	"

Lining A,B,C	45***	%	%	%	¾	¾	¾	¾	¾	¾	¾	Yd.
Dress A	45**	3%	3%	3%	3%	3%	3%	3%	3%	3%	3%	Yds.
	60**	2%	2%	2%	2%	2%	2%	2%	2%	2%	2%	"

Interfacing - 20" - ¼ yd,

Dress B	45**	4¾	4¾	5½	5½	5½	5½	5½	5½	5¾	5¾	Yds.
	60**	3¾	3¾	3¾	3¾	3¾	3¾	3¾	3¾	3¾	3¾	"

Interfacing B,C - 20" - 2 yds.

Dress C	45**	4½	4½	4¾	5	5	5	5	5	5½	5½	Yds.
	60**	3¾	3¾	3¾	3¾	3¾	3¾	3¾	3¾	3¾	3¾	"

FINISHED GARMENT MEASUREMENTS (Includes Design and Wearing Ease)

A,B,C Bust	35	36	37½	39½	41½	43½	45½	47½	49½	51½	Ins.
A,B,C Waist	26	27	28½	30½	32½	34½	36½	38½	40½	42½	"

Width, lower edge

Dress A	87	88	89½	91½	93½	95½	97½	99½	101½	103½	Ins.
Dress B,C	94½	95½	97	99	101	103	105	107	109	111	"

Finished back length from base of neck

Dress A	41¾	42	42¼	42¾	43¼	43¾	44¼	44¾	45¼	45¾	Ins.
Dress B,C	49¾	50	50¼	50¾	51¼	51¾	52¼	52¾	53¼	53¾	"

**with nap **without nap

Moins Facile

ROBE AVEC VARIATIONS DE MANCHES ET DE LONGUEURS POUR JEUNES FEMMES

Tissus Conseillés: Chambray, Cotonnades, Linon de coton, Toile de lin mélangés, Popeline, Rayonne. Doublure: Cotonnades, Mélanges de polyester. Entoilage: Thermocollant léger.

Mercerie: A,B,C: 1 fermeture à glissière invisible de 36cm. Aussi pour A,B: 0.6m d'élastique de 6mm.

Tailles	8	10	12	14	16	18	20	22	24	26
Françaises	36	38	40	42	44	46	48	50	52	54
Européen	34	36	38	40	42	44	46	48	50	52

MESURES DU CORPS: Choisissez la taille du patron basée sur les mesures du corps

Poitrine	80	83	87	92	97	102	107	112	117	122	cm
Taille	61	64	67	71	76	81	87	94	99	106	"

Hanches (23cm au-dessous de la taille)

	85	88	92	97	102	107	112	117	122	127	cm
Dos du cou à la taille	40	40.5	41.5	42	42.5	43	44	44	44.5	44.5	"

Doublure A,B,C	115cm*	0.6	0.6	0.6	0.6	0.7	0.7	0.7	0.8	0.8	0.8	m
Robe A	115cm*	3.1	3.1	3.1	3.1	3.3	3.4	3.4	3.5	3.5	3.5	m
	150cm*	2.2	2.2	2.2	2.2	2.3	2.3	2.3	2.5	2.5	2.6	"

Entoilage

Robe B	115cm*	4.3	4.5	4.7	4.9	4.9	4.9	5.0	5.0	5.0	5.3	m
	150cm*	3.3	3.4	3.4	3.4	3.4	3.5	3.5	3.5	3.5	3.5	"

Entoilage B,C

Robe C	115cm*	4.0	4.1	4.3	4.6	4.6	4.6	4.6	4.6	4.7	4.7	m
	150cm*	3.0	3.0	3.0	3.0	3.0	3.0	3.1	3.1	3.1	3.1	"

MESURES DES VÊTEMENTS FINI (Motif et aisance de port compris)

A,B,C Poitrine	89	91	95	100	105	110	116	121	126	131	cm
A,B,C Taille	66	69	72	77	83	88	93	98	103	108	"

Largeur à l'ourlet

Robe A	221	224	227	232	237	243	248	253	258	263	cm
Robe B,C	240	243	246	251	257	262	267	272	277	282	"

Longueur finie -- dos, votre nuque à l'ourlet

Robe A	106	107	107	108	109	109	110	110	111	112	cm
Robe B,C	126	127	128	128	129	130	130	131	131	132	"

*avec sens **sans sens



A

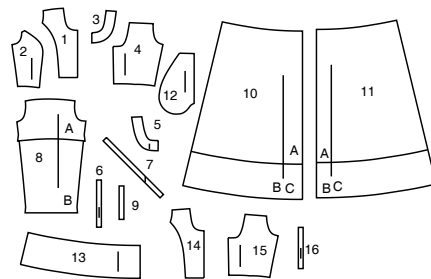
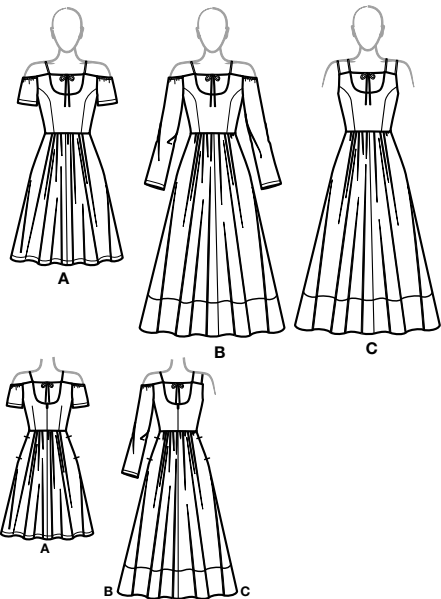


B

C

Simplicity®

Thank you for purchasing this Simplicity pattern.
We made every effort to provide you with a high quality product.



- 1 Bodice Front-A,B
- 2 Bodice Side Front-A,B
- 3 Front Neck Interfacing-A,B,C
- 4 Bodice Back-A,B
- 5 Back Neck Interfacing-A,B,C
- 6 Strap-A,B,C
- 7 Tie End-A,B,C
- 8 Sleeve-A,B
- 9 Elastic Guide for Sleeve-A,B
- 10 Skirt Front-A,B,C
- 11 Skirt Back-A,B,C
- 12 Pocket-A,B,C
- 13 Skirt Facing-B,C
- 14 Bodice Front-C
- 15 Bodice Back-C
- 16 Shoulder Strap-C

General Directions

The Pattern

- SYMBOLS**
- ↔ GRAIN LINE Place on straight grain of fabric parallel to selvage
 - PLACE SOLID LINE on fold of fabric.
 - CENTER FRONT OR BACK of garment.
 - ▽ NOTCHES
 - DOTS
 - CUTTING LINE
 - LENGTHEN OR SHORTEN LINES

SEAM ALLOWANCE: 5/8" (1.5cm) unless otherwise stated is included but not printed on MULTI-SIZE PATTERNS. Mark your size with colored felt tip pen. See chart on tissue for how to use MULTI-SIZE PATTERNS.

ADJUST IF NEEDED
Make adjustments before placing pattern on fabric.

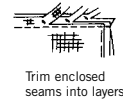
TO LENGTHEN:
Cut pattern between lengthen or shorten lines. Spread pattern evenly, the amount needed and tape to paper.

TO SHORTEN:
At lengthen or shorten lines, make an even pleat taking up amount needed. Tape in place.

When lengthen or shorten lines are not given, make adjustments at lower edge of pattern.

Sewing

- SEW garment following **Sewing Directions**.
- PIN or machine-baste seams matching notches.
- STITCH 5/8" (1.5 cm) seams unless otherwise stated.
- PRESS seams open unless otherwise indicated clipping when necessary so seams will lie flat.
- TRIM seams to reduce bulk, as shown below.



Cutting/Marking

BEFORE CUTTING:

PRESS pattern pieces with a warm dry iron. PRE-SHRINK fabric by pre-washing washables or steam-pressing non-washables.

CIRCLE your cutting layout.

PIN pattern to fabric as shown in Cutting Layouts.

• FOR DOUBLE THICKNESS: Fold fabric with RIGHT sides together.

• FOR SINGLE THICKNESS: Place fabric RIGHT side up.

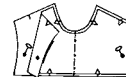
• FOR PILE, SHADED OR ONE WAY DESIGN FABRICS: Use "with nap" layouts

AFTER CUTTING:

Transfer markings to WRONG side of fabric before removing pattern. Use pin and chalk method or dressmaker's tracing paper and wheel.

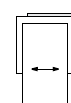
To Quick Mark:

- Snip edge of fabric to mark notches, ends of fold lines and center lines.
- Pin mark dots.

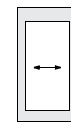


SPECIAL CUTTING NOTES

★ If layout shows a piece extending past fold, cut out all pieces except piece that extends.



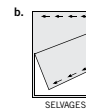
Open out fabric to single thickness. Cut extending piece on RIGHT side of fabric in position shown.



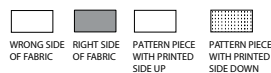
✱ Mark small arrows along both selvages indicating direction of nap or design. Fold fabric crosswise with RIGHT sides together, and cut along fold (a).



Turn one fabric layer around so arrows on both layers go in the same direction. Place RIGHT sides together (b).



Cutting Layouts

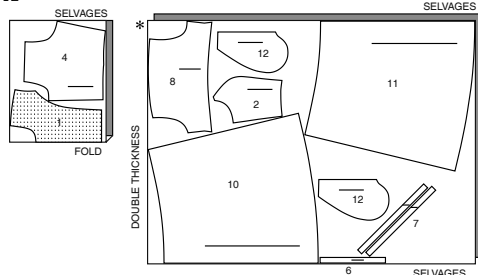


POSITION OF PATTERN PIECES MAY VARY SLIGHTLY ACCORDING TO YOUR PATTERN SIZE

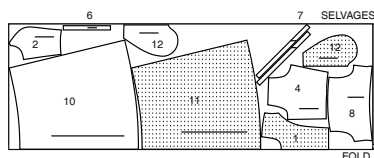
DRESS A

USE PIECES 1 2 4 6 7 8 10 11 12

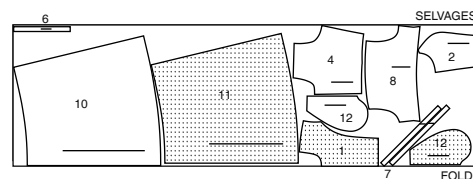
45" (115CM)
WITH NAP
ALL SIZES



60" (150CM)
WITH NAP
SIZES 8 10 12 14 16 18 20



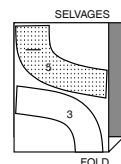
60" (150CM)
WITH NAP
SIZES 22 24 26



INTERFACING A

USE PIECES 3 5

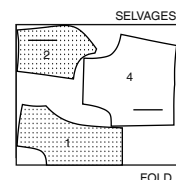
20" (51CM)
ALL SIZES



LINING A,B

USE PIECES 1 2 4

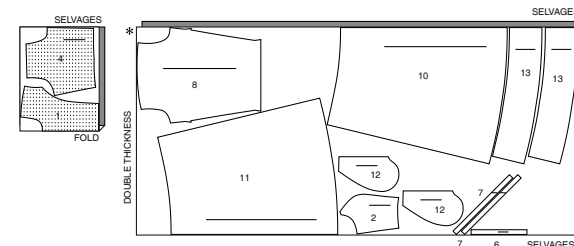
45" (115CM)
WITHOUT NAP
ALL SIZES



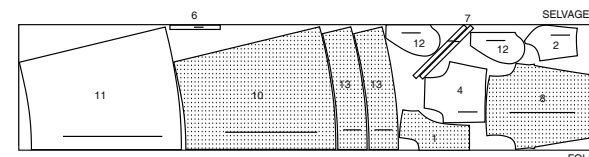
DRESS B

USE PIECES 1 2 4 6 7 8 10 11 12 13

45" (115CM)
WITH NAP
ALL SIZES



60" (150CM)
WITH NAP
ALL SIZES



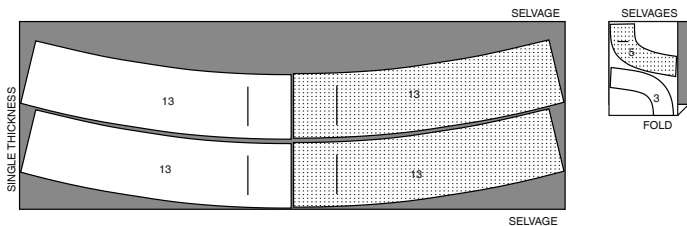
CUTTING LAYOUTS CONTINUED ON PAGE 2

S9950

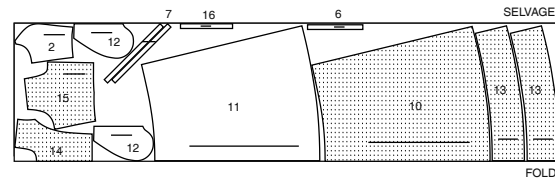
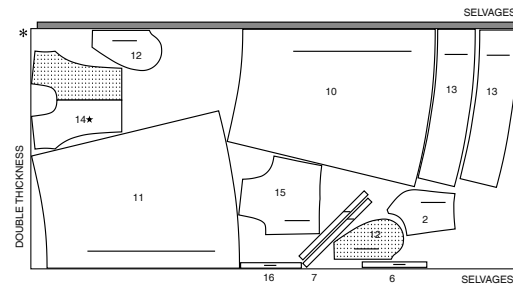
2 of 4

INTERFACING B,C

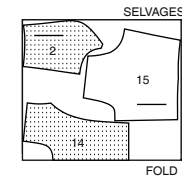
USE PIECES 3 5 13

20" (51CM)
ALL SIZES**DRESS C**

PIECES 2 6 7 10 11 12 13 14 15 16

45" (115CM)
WITH NAP
ALL SIZES60" (150CM)
WITH NAP
ALL SIZES**LINING C**

USE PIECES 2 14 15

45" (115CM)
WITHOUT NAP
ALL SIZES**SEWING TUTORIALS**Build your skills viewing short, easy-to-follow videos at
simplicity.com/sewingtutorials**Sewing Directions**

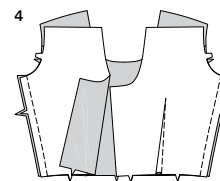
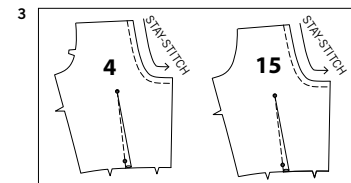
FABRIC KEY

RIGHT SIDE	WRONG SIDE	INTERFACING	LINING	LINING
------------	------------	-------------	--------	--------

Read **General Directions** on page 1 before you begin.Sewing methods in **BOLD TYPE** have Sewing Tutorial Video available.
Scan QR CODE to watch videos:**DART** - See Darts: "sewing flat dart" video.**EASESTITCH/GATHER** - See **Gathering**: "sewing two row gathers" video.**GATHER** - See **Gathering**: "sewing gathering with yarn" video.**SLIPSTITCH** - Slide needle through a folded edge, then pick up a thread of underneath fabric.**STAYSTITCH** - See **Machine Stitches**: "how to do stay-stitching" video.**TRIM** - see **How to Sew: Trim, Clip, and Layer Seams** video.**UNDERSTITCH** - See **Machine Stitches**: "how to understitch" video.**SLIPSTITCH** - Slide needle through a folded edge, then pick up a thread of underneath fabric.**PATTERN PIECES WILL BE IDENTIFIED BY NUMBERS THE FIRST TIME THEY ARE USED.****STITCH 5/8" (1.5CM) SEAMS WITH RIGHT SIDES TOGETHER UNLESS OTHERWISE STATED.****DRESS A, B, C**

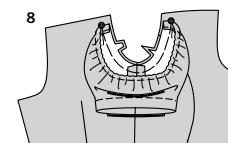
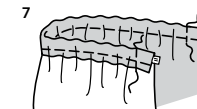
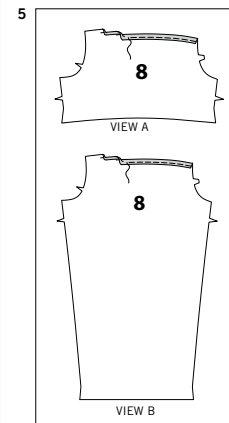
1. STAYSTITCH neck edge of bodice front (1 or 14) 1/2" (1.3cm) from raw edge in direction of arrows. Staystitching won't be shown in the following illustrations.
Machine-stitch side edges 1/2" (1.3cm) along curves, as shown.

2. Pin bodice side front (2) sections to front, matching notches, clipping front along curves to stitching where necessary.
Press seams toward front.



3. STAYSTITCH neck edge of bodice back (4 or 15) sections. Make **DART** in bodice back, bringing broken lines and small dots together. Stitch along broken line from wide end to point. Press toward center back.

4. Stitch bodice backs to front at sides.

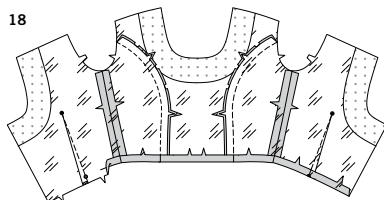
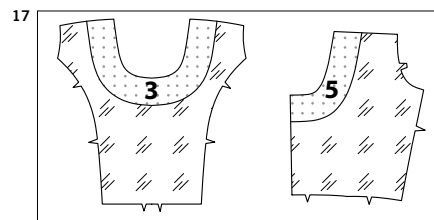
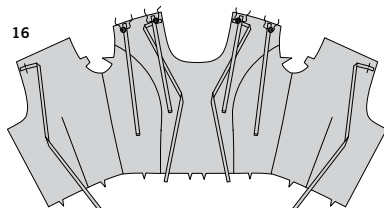
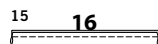
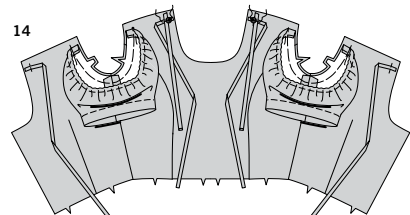
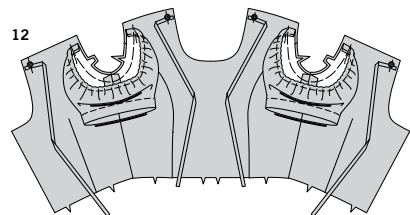
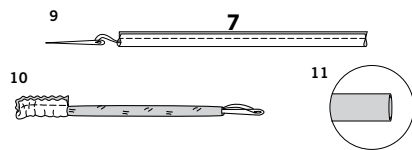
CONTINUE AS FOLLOWS FOR VIEWS A, B

5. Press upper edge of sleeve (8) to inside along foldline, forming casing.
Press under 1/4" (6mm) on raw edge.
Stitch close to inner edge of casing, leaving ends open.

6. Stitch underarm seam of sleeve.
Press up 1-1/4" (3.2cm) hem on lower edge of sleeve; press under 1/4" (6mm) on inner raw edge.
Stitch hem in place close to pressed edge.

7. Cut a piece of elastic the length of elastic guide for sleeve (9). Insert elastic through casing, having raw edges even.
Stitch across ends of elastic 1/2" (1.3cm) from raw edges.
Distribute fullness evenly.

8. With **RIGHT** sides together and raw edges even, pin sleeve to armhole edge, matching notches and large dots. Baste.



CONTINUE AS FOLLOWS FOR ALL VIEWS

9. Fold each tie end (7) in half, lengthwise, with RIGHT sides together. Stitch in a 1/4" (6mm) seam, stretching tie while stitching.
With a needle, attach a strong thread to one end of tie.

10. Draw needle eye forward, through fold, turning tie RIGHT side out. Lightly press.
TIP- Use a loop turner to easily turn tie.

11. Tuck raw edge without large dots 1/4" (6mm) into tie; press. If you prefer **SLIPSTITCH** pressed edges together.

12. On OUTSIDE, pin tie ends to neck edges of front and back, matching large dots and clearing seam allowances on upper edges.
Stitch ties in place 1/2" (1.3cm) from raw edge.

13. Fold each strap (6) in half, lengthwise, with RIGHT sides together. Stitch in a 1/4" (6mm) seam; do not stretch. Turn and press same as for tie ends, this time leaving both ends raw.

NOTE: You will notice that the straps for All Views and the shoulder straps for View C have an extra allowance at the back edge this is for adjustment.

14. On OUTSIDE, baste front end of straps to front shoulder edges, matching large dots at shoulders and clearing seam allowances on shoulder edges.

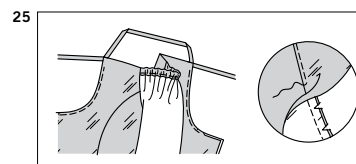
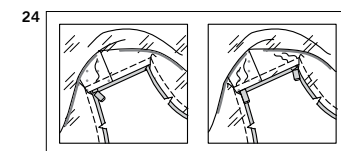
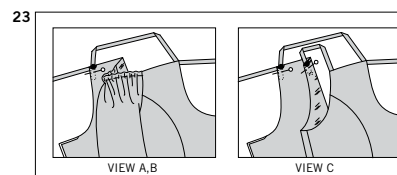
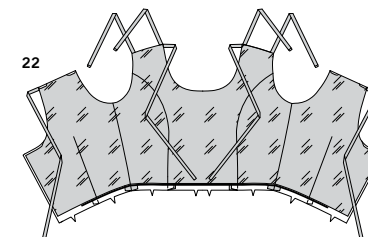
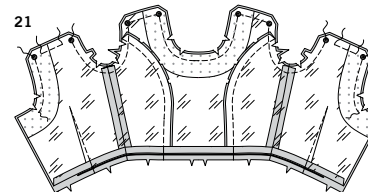
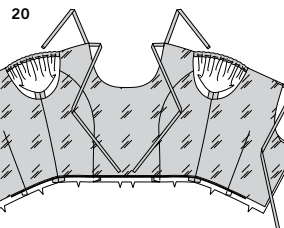
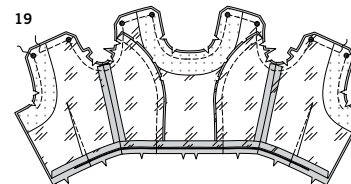
15. STRAPS C – Make shoulder strap (16) in same manner as for strap.

16. On OUTSIDE, baste front end of shoulder straps to shoulder edges in same manner as for strap, matching large dots near armholes.

CONTINUE AS FOLLOWS FOR ALL VIEWS

17. On WRONG side, pin front neck interfacing (3) to neck edge of bodice front lining, having raw edges even. Fuse in place following manufacturer's directions.
Apply back neck interfacing (5) to neck edge of bodice back lining in same manner.

18. Make bodice lining sections same as for bodice, omitting staystitching.
Press under 5/8" (1.5cm) on lower edge.



19. VIEWS A, B- With RIGHT sides together and raw edges even, pin lining to bodice (over sleeves), matching centers, large dots, and seams.
Stitch back neck edges from large dot to within 2" (5cm) of back opening edges.
Stitch remaining upper edges to within 3/4" (2cm) of large dots at back neck, pivoting with needle in fabric at large dots.
Be careful not to catch in free edges of sleeve, ties, and straps as you stitch.
TRIM seam and corners; clip curves.

20. Turn lining to INSIDE: press.

21. VIEW C- With RIGHT sides together and raw edges even, pin lining to bodice, matching centers, large dots, and seams.
Stitch back neck edges from large dot to within 2" (5cm) of back opening edges.
Stitch shoulder edges to within 3/4" (2cm) of large dots, as shown.
Stitch remaining upper edges between large dots at back armhole edges, pivoting with needle in fabric at remaining large dots.
Be careful not to catch in free edges of ties, and straps as you stitch.

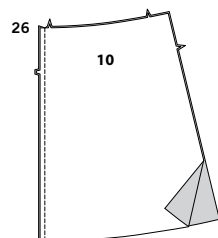
22. Turn lining to INSIDE: press.

23. FOR VIEWS A, B - Insert raw edges of straps into openings on back shoulder, matching large dots.
FOR VIEWS C - Insert raw edges of straps and shoulder straps into corresponding openings on back shoulder, matching large dots.

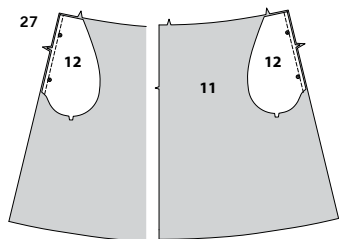
24. Try on bodice, having lower seamline at your waist.
Adjust length of straps for all Views and shoulder straps for View C so that they fit comfortably. Stitch openings closed.
If necessary, trim raw edge of straps even with shoulder edge of back.

25. UNDERSTITCH seamed edges of lining as far as possible and to within 3" (7.5cm) of back opening edges by pressing lining and seam away from bodice, stitching through lining and seam allowances close to seam as far as possible.
Turn lining to INSIDE: press.

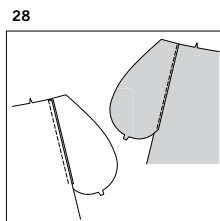
CONTINUE AS FOLLOWS FOR ALL VIEWS



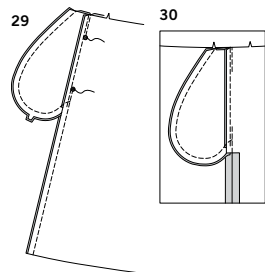
26. Stitch center front seam of skirt front (10) sections



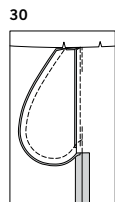
27. Apply pockets to side edges of skirt front and skirt back (11) sections, as follows:
With RIGHT sides together, pin pocket (12) skirt sections, matching large dots and having raw edges even.
Stitch in a 3/8" (1cm) seam.



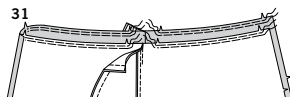
28. Press seam toward pocket, pressing pocket out.
UNDERSTITCH front pocket.
Press seam toward pocket.



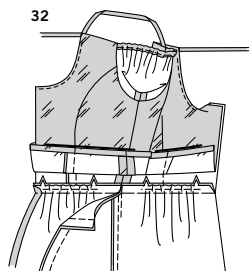
29. Pin front to back at side seams, matching large dots. Stitch side seams, leaving an opening between large dots; back-stitch at large dot to reinforce seam.
Stitch side and lower edges of pocket together between side seams.



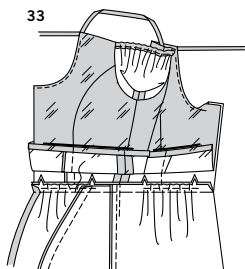
30. Clip skirt back seam allowance at end of pocket.
Press seam open below clip. Press pocket toward front along side seam lines.



31. **GATHER** upper edge of skirt front between notches by stitching along seam line and 1/4" (6mm) INSIDE seam line, using a long machine-stitch, keeping pockets free.
GATHER upper edge of skirt back between notches in same manner.

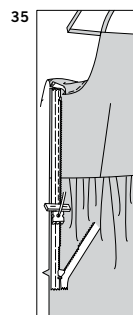
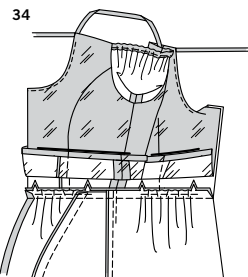


32. With RIGHT sides together, pin skirt to lower edge of bodice, matching centers, notches, and side seams, keeping lining and pockets out of the way.
Pull up gathering stitches to fit.
Baste between side seams, keeping pockets free.



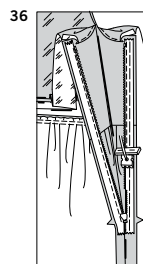
33. Turn pockets towards front and baste upper edges to skirt.

34. Stitch entire waist seam line, keeping lining free.
Press seam toward bodice.

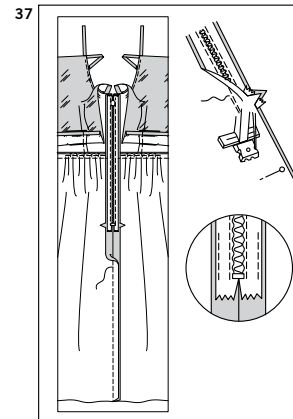


NOTE: *Stitch the invisible zipper using an invisible zipper foot. Before you begin, be sure to line up your needle with the center of the invisible zipper foot or you may break your needle. When the coils are to the LEFT of the raw edge use the LEFT groove and when the coils are to the RIGHT of the raw edge use the RIGHT groove.*

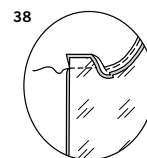
35. Open zipper and press tape flat on WRONG side, unrolling coils. Do not press coils. (Use a low iron setting.)
On OUTSIDE, pin RIGHT side of zipper face down on RIGHT side of zipper opening. Have the coil along the seam line, the tape within the seam allowance and the top stop 3/4" (2cm) below upper edge, as shown. Hand-baste along center of tape to notch, keeping lining out of the way. Position zipper foot at top of zipper with RIGHT groove of foot over coil. Stitch along tape to notch, keeping lining free. Back-stitch to reinforce.



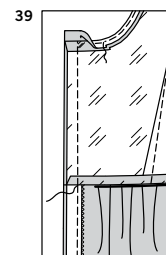
36. Pin remaining half of zipper to LEFT side of zipper opening in same manner. Make sure upper and lower edges of dress are even and that waist seams match. Hand-baste along center of tape, keeping lining out of the way.
Position zipper foot at top of zipper with LEFT groove over coil.
Stitch along tape to notch, keeping lining free. Back-stitch to reinforce.



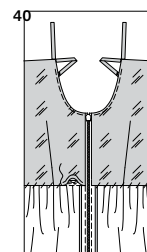
37. Close zipper and check that it is invisible from the OUTSIDE.
Pull free ends of zipper tape away from seam allowance. Pin remaining center back seam together below zipper. Position zipper foot all the way to the LEFT so the needle goes down through the outer notch of the foot. Start stitching seam 1/4" (6mm) above lowest stitch and slightly to the LEFT. Stitch seam for about 3" (7.5cm). Stitch remainder of seam using your regular presser foot.
If you prefer, open out each seam allowance at end of zipper and stitch tape to seam allowance.



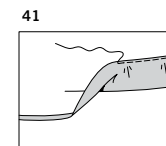
38. Turn lining back to OUTSIDE.
Open out center back opening edges of dress, rolling zipper teeth away from opening edge. With RIGHT sides together, pin lining to dress, matching centers back. Stitch remaining upper edge, connecting to previous stitching.
TRIM seam.
UNDERSTITCH remaining back neck edge as far as possible.



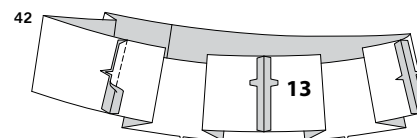
39. Pin back opening edges together.
Using an adjustable zipper foot, stitch 1/2" (1.3cm) from back edges, keeping zipper teeth free.
Trim corners. Do not trim center back edges.



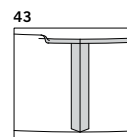
40. Turn lining and back edges to INSIDE, rolling zipper teeth back in place; press.
SLIPSTITCH pressed edge of lining over waistline seam.



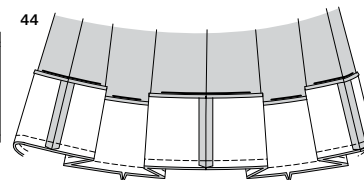
41. **HEM A** - Press up 1-1/4" (3.2cm) hem; press under 1/4" (6mm) on raw edge.
Stitch in place close to inner pressed edge, easing in fullness.



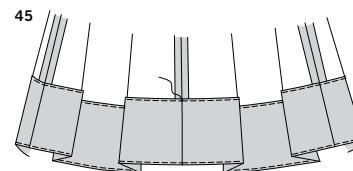
42. **HEM FACING B, C** - Stitch ends of skirt facing (13) together, matching single and double notches, forming a circle.



43. Press under 1/4" (6mm) on upper unnotched edge.
TIP: Machine-stitch 1/4" (6mm) from raw edge then press under along stitching.



44. With RIGHT sides together, pin facing to lower edge of dress, matching centers, and notches. **STITCH**. Trim seam. **UNDERSTITCH** facing.



45. Turn facing to INSIDE; press. Pin facing in place. Stitch close to inner pressed edge.



Congrats!

You've completed your sewing adventure

SHARE YOUR LOOK



Post your pattern and tag us
@simplicity_creative_group and **#simplicitypatterns**
for a chance to be featured on our social media.

Look for more PDF patterns at [simplicity.com](https://www.simplicity.com)

Have a question or need help with your sewing project call us at
1-888-588-2700



Simplicity ©2024 a division of IG Design Group Americas Inc. • Atlanta, GA 30342 USA www.thedesigngroup.com • All Rights Reserved. www.simplicity.com • Made in the U.S.A. Fabriqué aux États-Unis.

To be used for individual private home use only and not for commercial or manufacturing purposes. • A usage privé seulement et non à des fins commerciales ou de production en série. • Para uso privado solamente, no se puede utilizar con propósitos de comercialización o de producción en serie.