

S9949

Simplicity



Designed and printed in USA.



Average

MISSES' DRESS IN TWO LENGTHS

Suggested Fabrics: Cotton, Crepe, Denim, Linen, Sateen, Silky Types. **Lining:** Lining Fabric. **Interfacing:** Lightweight Fusible.

Notions: A,B: One 12" (30cm) invisible zipper, two ½" (1.3cm) buttons.

Sizes	6	8	10	12	14	16	18	20	22	24
European	32	34	36	38	40	42	44	46	48	50

BODY MEASUREMENTS: Select pattern size based on body measurements

Bust	30½	31½	32½	34	36	38	40	42	44	46	Ins.
Waist	23	24	25	26½	28	30	32	34	37	39	"
Hip-9" below waist	32½	33½	34½	36	38	40	42	44	46	48	"
Back-neck to waist	15½	15¾	16	16¼	16½	16¾	17	17¼	17½	17¾	"

Lining A,B - 45*** - ¾ yd.

Interfacing A,B - 20" - ¼ yd.

Dress A	45**	4½	4½	4%	4%	4¾	4¾	4%	4%	4%	5	Yds.
	60**	2%	2%	2%	2%	3	3%	3½	3½	3½	3%	"
Dress B	45**	7%	7%	7%	7½	7½	7½	7%	7%	7%	7¾	Yds.
	60**	5	5	5%	5%	5¼	5¼	5%	5½	5½	5%	"

FINISHED GARMENT MEASUREMENTS (Includes Design and Wearing Ease)

A,B Bust	31½	32½	33½	35	37	39	41	43	45	47	Ins.
A,B Waist	25½	26½	27½	29	31	33	35	37	39	41	"
Finished back length from base of neck											
Dress A	40½	40¾	41	41¼	41½	41¾	42	42¼	42½	42¾	Ins.
Dress B	51½	51¾	52	52¼	52½	52¾	53	53¼	53½	53¾	"

*with nap **without nap

Moins Facile

ROBE EN DEUX LONGUEURS POUR JEUNES FEMMES

Tissus Conseillés: Coton, Crêpe, Denim, Toile de lin, Satin de coton, Tissus soyeux.

Doublure: Tissu à doublure. **Entoilage:** Thermocollant léger.

Mercerie: A,B: 1 fermeture à glissière invisible de 30cm, 2 boutons de 1.3cm.

Tailles	6	8	10	12	14	16	18	20	22	24
Françaises	34	36	38	40	42	44	46	48	50	52
Européen	32	34	36	38	40	42	44	46	48	50

MESURES DU CORPS: Choisissez la taille du patron basée sur les mesures du corps

Poitrine	78	80	83	87	92	97	102	107	112	117	cm
Taille	58	61	64	67	71	76	81	87	94	99	"
Hanches (23cm au-dessous de la taille)	83	85	88	92	97	102	107	112	117	122	cm
Dos du cou à la taille	39.5	40	40.5	41.5	42	42.5	43	44	44	44.5	"

Doublure A,B - 115cm** - 0.3m

Entoilage A,B - 51cm - 0.8m

Robe A	115cm*	4.1	4.1	4.1	4.2	4.2	4.3	4.5	4.5	4.6	m
	150cm*	2.6	2.6	2.6	2.6	2.6	3.1	3.1	3.1	3.2	3.3
Robe B	115cm*	6.7	6.7	6.7	6.9	6.9	6.9	6.9	7.0	7.0	7.1
	150cm*	4.6	4.6	4.6	4.7	4.8	4.8	4.9	5.0	5.0	5.1

MESURES DES VÊTEMENTS FINI (Motif et aisance de port compris)

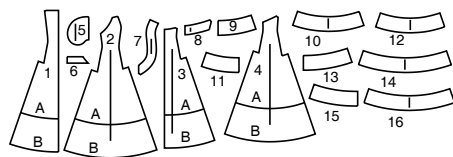
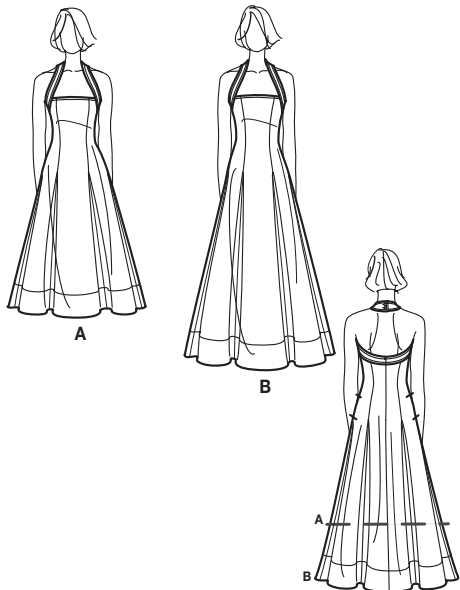
A,B Poitrine	80	83	85	89	94	99	104	109	114	119	cm
A,B Taille	65	67	70	74	79	84	89	94	99	104	"
Longueur finie – dos, votre nuque à l'ourlet											
Robe A	103	104	104	105	105	106	107	107	108	109	cm
Robe B	131	131	132	133	133	134	135	135	136	137	"

*avec sens **sans sens



Simplicity®

Thank you for purchasing this Simplicity pattern. We made every effort to provide you with a high quality product.



- 1 FRONT-A,B
- 2 SIDE FRONT-A,B
- 3 BACK-A,B
- 4 SIDE BACK-A,B
- 5 SIDE FRONT AND POCKET-A,B
- 6 FRONT FACING-A,B
- 7 FRONT BAND-A,B
- 8 BACK BAND-A,B
- 9 LOWER FRONT FACING-A
- 10 LOWER SIDE FRONT FACING-A
- 11 LOWER BACK FACING-A
- 12 LOWER SIDE BACK FACING-A
- 13 LOWER FRONT FACING-B
- 14 LOWER SIDE FRONT FACING-B
- 15 LOWER BACK FACING-B
- 16 LOWER SIDE BACK FACING-B

General Directions

The Pattern

- SYMBOLS**
- ↔ GRAIN LINE Place on straight grain of fabric parallel to selvage
 - ⇄ PLACE SOLID LINE on fold of fabric.
 - - - - CENTER FRONT OR BACK of garment.
 - ∇ NOTCHES
 - ○ DOTS
 - CUTTING LINE
 - == LENGTHEN OR SHORTEN LINES
- SEAM ALLOWANCE: 5/8" (1.5cm) unless otherwise stated is included but not printed on MULTI-SIZE PATTERNS. Mark your size with colored felt tip pen. See chart on tissue for how to use MULTI-SIZE PATTERNS.

ADJUST IF NEEDED

Make adjustments before placing pattern on fabric.

TO LENGTHEN: Cut pattern between lengthen or shorten lines. Spread pattern evenly, the amount needed and tape to paper.

TO SHORTEN: At lengthen or shorten lines, make an even pleat taking up amount needed. Tape in place.

When lengthen or shorten lines are not given, make adjustments at lower edge of pattern.

Cutting/Marking

BEFORE CUTTING:

PRESS pattern pieces with a warm dry iron. PRE-SHRINK fabric by pre-washing washables or steam-pressing non-washables.

CIRCLE your cutting layout.

PIN pattern to fabric as shown in Cutting Layouts.

- FOR DOUBLE THICKNESS: Fold fabric with RIGHT sides together.
- FOR SINGLE THICKNESS: Place fabric RIGHT side up.
- FOR PILE, SHADED OR ONE WAY DESIGN FABRICS: Use "with nap" layouts

AFTER CUTTING:

Transfer markings to WRONG side of fabric before removing pattern. Use pin and chalk method or dressmaker's tracing paper and wheel.

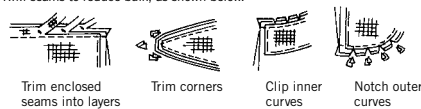
To Quick Mark:

- Snip edge of fabric to mark notches, ends of fold lines and center lines.
- Pin mark dots.



Sewing

- SEW garment following **Sewing Directions**.
- PIN or machine-baste seams matching notches.
- STITCH 5/8" (1.5 cm) seams unless otherwise stated.
- PRESS seams open unless otherwise indicated clipping when necessary so seams will lie flat.
- TRIM seams to reduce bulk, as shown below.

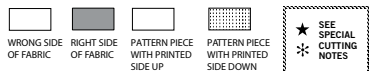


SPECIAL CUTTING NOTES

- ★ If layout shows a piece extending past fold, cut out all pieces except piece that extends.
- ✱ Mark small arrows along both selvages indicating direction of nap or design. Fold fabric crosswise with RIGHT sides together, and cut along fold (a).

Turn one fabric layer around so arrows on both layers go in the same direction. Place RIGHT sides together (b).

Cutting Layouts

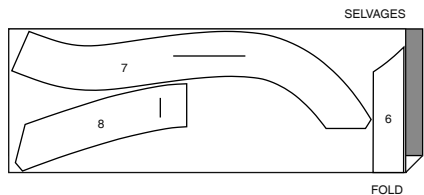


POSITION OF PATTERN PIECES MAY VARY SLIGHTLY ACCORDING TO YOUR PATTERN SIZE

INTERFACING A,B

USE PIECES 6 7 8

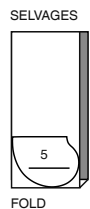
20" (51CM) ALL SIZES



LINING A,B

USE PIECES 5

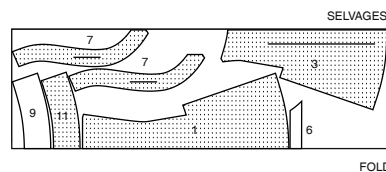
45" (115CM) WITHOUT NAP ALL SIZES



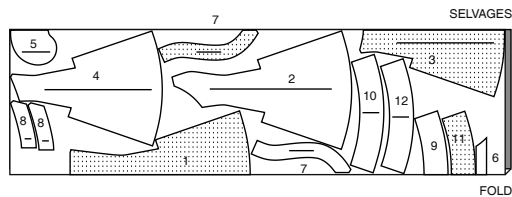
DRESS A

USE PIECES 1 2 3 4 5 6 7 8 9 10 11 12

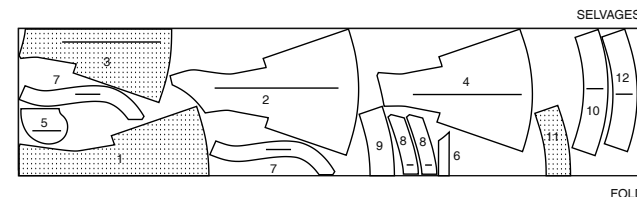
45" (115CM) WITH NAP ALL SIZES



60" (150CM) WITH NAP SIZES 6 8 10 12 14



60" (150CM) WITH NAP SIZES 16 18 20 22 24

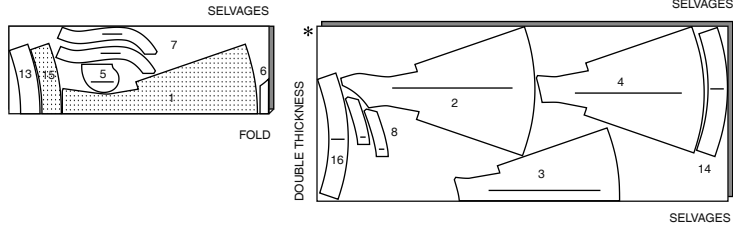


CUTTING LAYOUTS CONTINUED ON PAGE 2

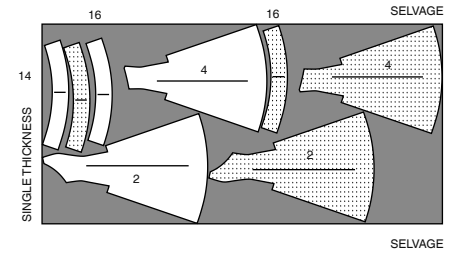
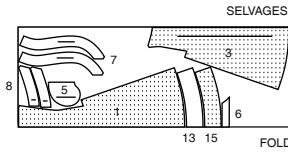
DRESS B

USE PIECES 1 2 3 4 5 6 7 8
13 14 15 16

45" (115CM)
WITH NAP
ALL SIZES



60" (150CM)
WITH NAP
ALL SIZES

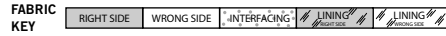


SEWING TUTORIALS



Build your skills viewing short, easy-to-follow videos at simplicity.com/sewingtutorials

Sewing Directions



Read **General Directions** on page 1 before you begin.

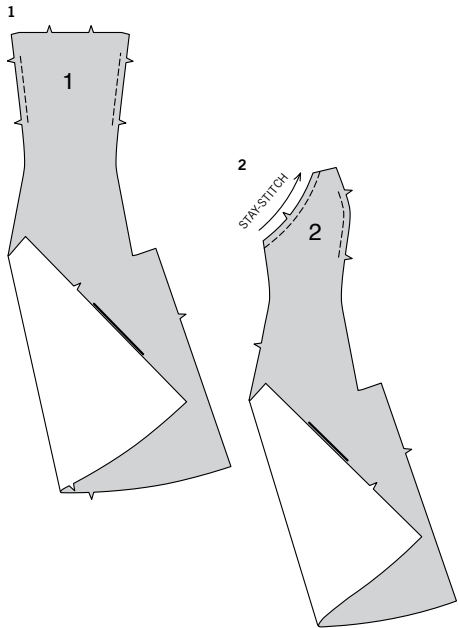
Sewing methods in **BOLD TYPE** have Sewing Tutorial Video available. Scan QR CODE to watch videos:

- EDGESTITCH** - see Machine Stitches: "how to edgestitch" video.
- INVISIBLE ZIPPER** - see Zipper: "sewing an invisible zipper" video.
- STAYSTITCH** - see Machine Stitches: "how to do stay-stitching" video.
- TACK** - see Hand-Stitching: "how to tack" video.
- TOPSTITCH** - see Machine Stitches: "how to topstitch" video.
- TRIM** - see How to Sew: Trim, Clip, and Layer Seams" video.
- UNDERSTITCH** - see Machine Stitches: "how to understitch" video.

PATTERN PIECES WILL BE IDENTIFIED BY NUMBERS THE FIRST TIME THEY ARE USED.

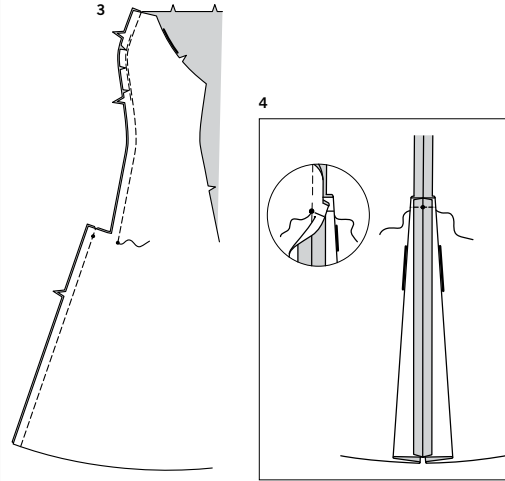
STITCH 5/8" (1.5CM) SEAMS WITH RIGHT SIDES TOGETHER UNLESS OTHERWISE STATED.

DRESS A, B



1. Machine-stitch front (1) between notches 1/2" (1.3cm) from raw edge.

2. STAYSTITCH armhole edge of side front (2) sections 1/2" (1.3cm) in direction of arrows. Staystitching will not be shown in the following illustrations. Machine-stitch side edges between notches 1/2" (1.3cm) from raw edge.

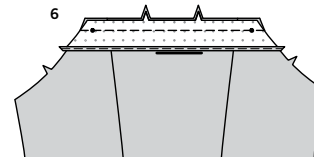


3. Make pleat and stitch seam, as follows:
With **RIGHT** sides together and raw edges even, pin side front sections to front, matching single notches, small dots, and solid lines.
Pin princess seam, clipping side front along curves where necessary. Stitch princess seam above small dot, back-stitching at small dot to reinforce seam.
Stitch outer edges of extension together.

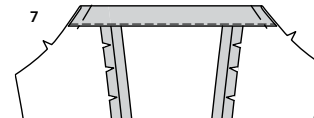
4. Press seam open, pressing pleat flat along solid lines, bringing seam to small dot.
Stitch across top of pleat, breaking stitches at small dot, keeping dress free, as shown; press.



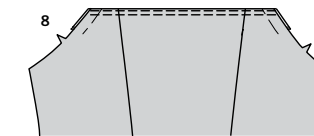
5. Apply fusible interfacing to **WRONG** side of front facing (6), following manufacturer's directions.
To finish lower edge, stitch under 1/4" (6mm) OR zigzag OR overlock over raw edge.



6. With **RIGHT** sides together and raw edges even, stitch facing to front along upper edge, matching centers, and small dots.
TRIM seam.



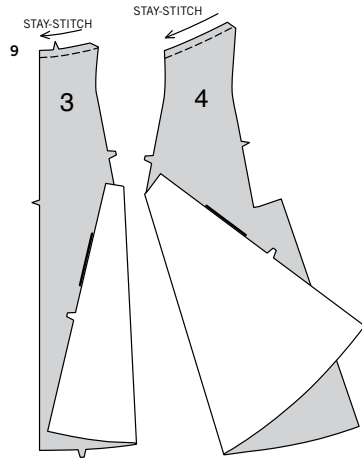
7. Turn facing to inside; press.
Baste to armhole edges.



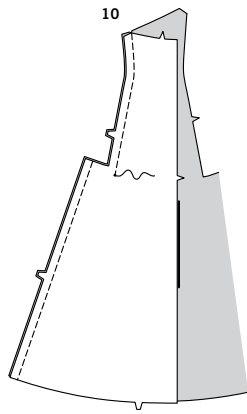
8. On **OUTSIDE**, **EDGESTITCH** upper edge of front.
TOPSTITCH 1/4" (6mm) away from edgestitching.

S9949

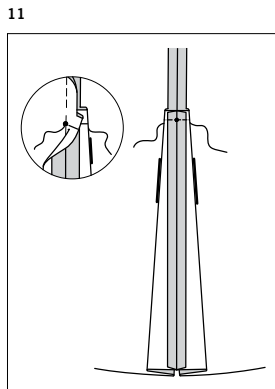
3 of 4



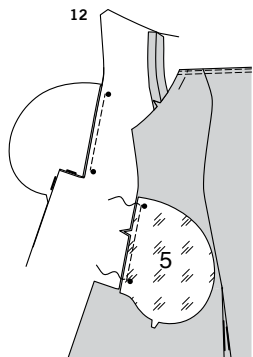
9. STAYSTITCH upper edge of back (3) and side back (4) sections in direction of arrows.



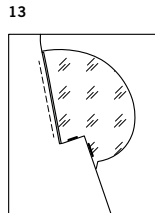
10. Pin back to side back, matching double notches, small dots, and solid lines. Stitch princess seam above small dot, back-stitching at small dot to reinforce seam. Stitch outer edges of extension together, as shown.



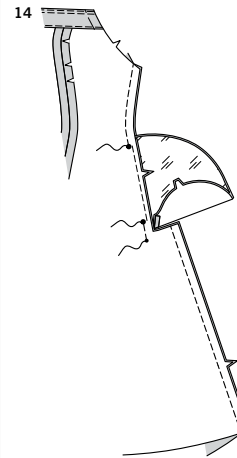
11. Press seam open, pressing pleat flat along solid lines, bringing seam to center small dot. Stitch across top of pleat, breaking stitches at center small dot, keeping dress free; press.



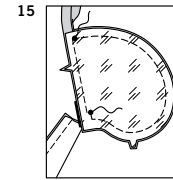
12. Apply pockets as follows: With RIGHT sides together and raw edges even, pin pocket (5) lining to front and fabric pocket to back, matching large dots. Stitch between large dots in a 3/8" (1cm) seam, backstitching at large dots to reinforce seam.



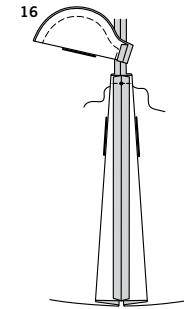
13. Press seam toward pocket, pressing pocket out.



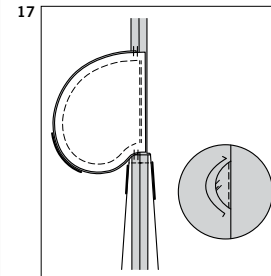
14. Pin front to back at side seams, matching small and large dots. Stitch side seam from upper edge to small dot, leaving an opening between large dots for pocket, as shown; back-stitch at each dot to reinforce. Stitch long edges of extensions together, keeping pockets free.



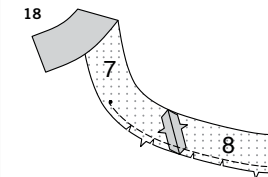
15. Turn dress seam allowances away from pocket. Stitch pocket edges together along seam line between large dots, as shown, keeping dress and pocket side seams free.



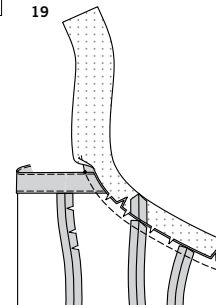
16. Press dress side seams open. Press pleat flat along solid lines, bringing seam to small dot. Stitch across top of pleat, breaking stitches at small dot, keeping pockets and dress free; press.



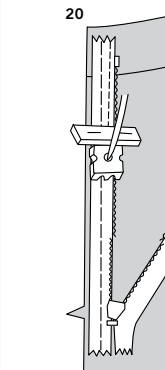
17. Open pocket. **UNDERSTITCH** by pressing front pocket and seam away from dress, stitching through pocket and seam allowance close to seam as far as possible. Press pocket toward front, pressing pleat along side seam lines. **TACK** upper and lower edges of pocket seam allowances to seam allowances of dress.



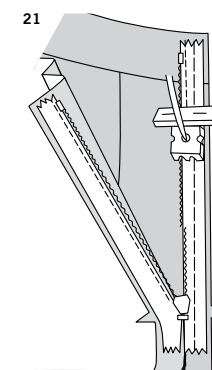
18. Apply fusible interfacing to WRONG side of front band (7) and back band (8) sections. For each side of dress, stitch one front band to one back band at side seams. Machine-stitch notched edge 1/2" (1.3cm) from raw edge below small dot, as shown. Clip curves to stitching, as shown. The remaining band sections will be used as facings.



19. Pin band to dress, matching side seams and small dots. Stitch. **TRIM** seam; clip curves. Press band out, pressing seam toward band.

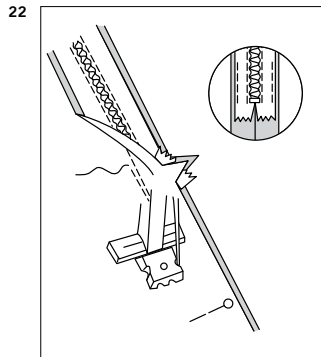


NOTE: Stitch the **INVISIBLE ZIPPER** using an invisible zipper foot. Before you begin, be sure to line up your needle with the center of the invisible zipper foot or you may break your needle. When the coils are to the LEFT of the raw edge use the LEFT groove and when the coils are to the RIGHT of the raw edge use the RIGHT groove.

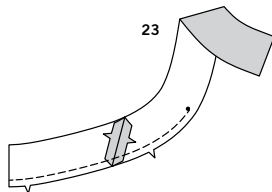


20. Open zipper and press tape flat on WRONG side, unrolling coils. Do not press coils. (Use a low iron setting.) On OUTSIDE, pin RIGHT side of zipper face down on RIGHT side of zipper opening. Have the coil along the seam line, the tape within the seam allowance and the top stop 3/4" (2cm) below upper edge, as shown. Hand-baste along center of tape. Position zipper foot at top of zipper with RIGHT groove of foot over coil. Stitch along tape to notch. Back-stitch to reinforce.

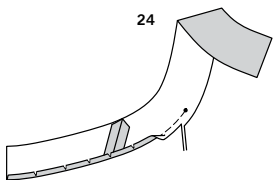
21. Pin remaining half of zipper to LEFT side of zipper opening in same manner. Make sure upper and lower edges of garment are even. Hand-baste along center of tape. Position zipper foot at top of zipper with LEFT groove over coil. Stitch along tape to notch. Back-stitch to reinforce.



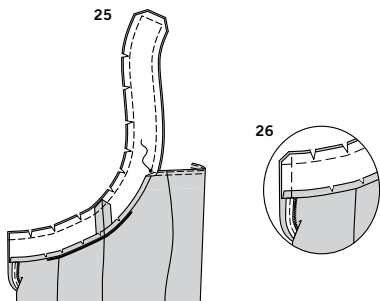
- 22.** Close zipper and check that it is invisible from the OUTSIDE. Pull free ends of zipper tape away from seam allowance. Pin remaining center back seam together below zipper. Position zipper foot all the way to the LEFT so the needle goes down through the outer notch of the foot. Start stitching seam 1/4" (6mm) above lowest stitch and slightly to the LEFT. Stitch seam for about 3" (7.5cm). Stitch remainder of seam using your regular presser foot. If you prefer, open out each seam allowance at end of zipper and stitch tape to seam allowance.



- 23.** Stitch side seams of band facing sections. Machine-stitch notched edge along seam line below small dot.

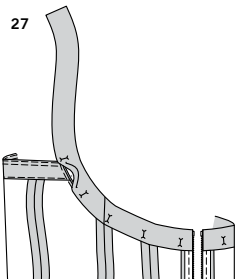


- 24.** Trim stitched edge of facing to 3/8" (1cm) below small dot. Press under along stitching, clipping curves where necessary.

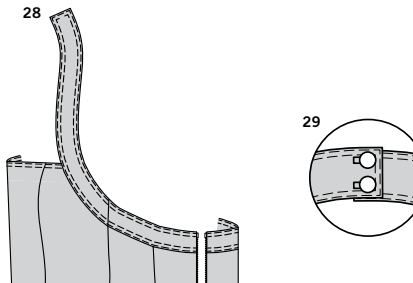


- 25.** Open out center back opening edges of back, rolling zipper teeth away from opening edge. Turn down pressed edge on facing at small dot, and with RIGHT sides together and raw edges even, pin facing to band, matching side seams and small dots. Stitch from upper back edge to small dot, as shown, back-stitching at small dot. **TRIM** seam and corners; clip curves.

- 26.** Pin back opening edges together. Using an adjustable zipper foot, stitch 1/2" (1.3cm) from back edges, keeping zipper teeth free. Trim corners. Do not trim center back edges.

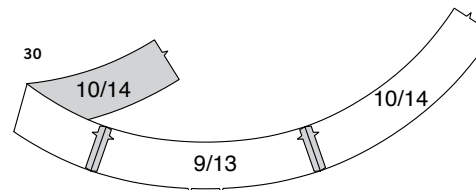


- 27.** Turn facing and back edges to INSIDE, rolling zipper teeth back in place; press. Pin pressed edge of facing over seam, placing pins on OUTSIDE. If you prefer, hand-baste facing close to pressed edge.

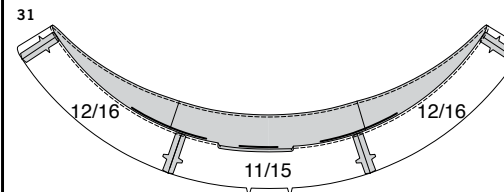


- 28. EDGESTITCH** all edges of band except for back edges, catching in facing on INSIDE. **TOPSTITCH** 1/4" (6mm) away from edgestitching.

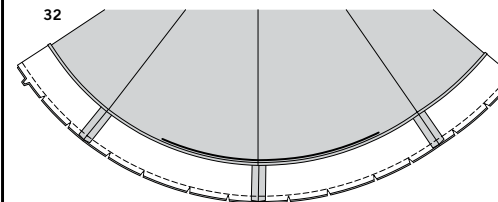
- 29.** Make buttonholes in left end of band at markings. Lap left end of band over right, matching centers. Sew buttons under buttonholes.



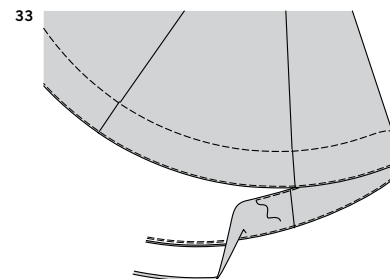
- 30.** Stitch lower side front facing (10 or 14) sections to lower front facing (9 or 13), matching single notches.



- 31.** Stitch lower side back facing (12 or 16) sections to lower back facing (11 or 15), matching double notches. Stitch facing sections together at side seams. Machine-stitch 1/4" (6mm) from upper raw edge. Turn upper edge to wrong side along stitching; press.



- 32.** Pin facing to lower edge of skirt, matching centers, and seams; stitch. **TRIM** seam; clip curves. **UNDERSTITCH** facing.



- 33.** Turn facing to INSIDE; press. Pin facing in place, matching centers and seams. Stitch closed to inner pressed edge. **TIP-** if you prefer, baste facing in place on wrong side and **TOPSTITCH** as basted on outside.



Congrats!

You've completed your sewing adventure

**SHARE
YOUR** LOOK



Post your pattern and tag us
@simplicity_creative_group and **#simplicitypatterns**
for a chance to be featured on our social media.

Look for more PDF patterns at [simplicity.com](https://www.simplicity.com)

Have a question or need help with your sewing project call us at
1-888-588-2700



Simplicity ©2024 a division of IG Design Group Americas Inc. • Atlanta, GA 30342 USA www.thedesigngroup.com • All Rights Reserved. www.simplicity.com • Made in the U.S.A. Fabriqué aux États-Unis.

To be used for individual private home use only and not for commercial or manufacturing purposes. • A usage privé seulement et non à des fins commerciales ou de production en série. • Para uso privado solamente, no se puede utilizar con propósitos de comercialización o de producción en serie.