

S9945

mig A DIY & LIFESTYLE BRAND



Simplicity
Designed and printed in USA.

Average

MISSES' DRESS AND JUMPSUIT

Suggested Fabrics: Crepe, Denim, Linen, Ponte, Sateen, Satin, Silky Types. **Lining:** Polyester, Rayons, Soft Cottons. **Interfacing:** Lightweight Fusible.

Notions: A,B: Three ¾" (1.5cm) buttons, 6" (15cm) length of ¼" (3mm) elastic, one 9" (23cm) invisible zipper.

Sizes	8	10	12	14	16	18	20	22	24	26
European	34	36	38	40	42	44	46	48	50	52

BODY MEASUREMENTS: Select pattern size based on body measurements

Bust	31½	32½	34	36	38	40	42	44	46	48	Ins.
Waist	24	25	26½	28	30	32	34	37	39	41½	"
Hip-9" below waist	33½	34½	36	38	40	42	44	46	48	50	"
Back-neck to waist	15¾	16	16¼	16½	16¾	17	17¼	17½	17¾	17¾	"

Lining A,B	45*** - % yd.											Interfacing A,B - 20" - 1% yds.											
Dress A	45**	1%	1%	2%	2%	2%	2%	2%	2%	2%	2%	2%	2%	2%	2%	2%	2%	2%	2%	2%	2%	2%	Yds.
	60*	1½	1½	1½	1½	1½	1½	1½	1½	1½	1½	1½	1½	1½	1½	1½	1½	1½	1½	1½	1½	1½	"
Jumpsuit B	45**	3	3	3½	3½	3½	3½	3½	3½	3½	3½	3½	3½	3½	3½	3½	3½	3½	3½	3½	3½	3½	Yds.
	60**	2%	2%	2%	2%	2%	2%	2%	2%	2%	2%	2%	2%	2%	2%	2%	2%	2%	2%	2%	2%	2%	"

FINISHED GARMENT MEASUREMENTS (Includes Design and Wearing Ease)

A,B Bust	32½	33½	35	37	39	41	43	45	47	49	Ins.
A,B Waist	26	27	28½	30½	32½	34½	36½	38½	40½	42½	"
A,B Hip	37	38	39½	41½	43½	45½	47½	49½	51½	53½	"
Width, lower edge											
Dress A	38	39	40½	42½	44½	46½	48½	50½	52½	54½	Ins.
Width, each leg											
Jumpsuit B	31½	32	32½	33	33½	34	34½	35	35½	36	Ins.
Finished back length from base of neck											
Dress A	45½	46	46½	46½	46¾	47	47¼	47½	47¾	48	Ins.
Jumpsuit B	56½	57	57½	58	58½	59	59½	60	60½	61	"

*with nap **without nap

Moins Facile

ROBE ET COMBINAISON POUR JEUNES FEMMES

Tissus Conseillés: Crêpe, Denim, Toile de lin, Tricot ponte, Satin de coton, Satin, Tissus soyeux. **Doubleure:** Polyester, Rayonne, Cotons souples. **Entoilage:** Thermocollant léger.

Mercerie: A,B: 3 boutons de 1.5cm, 15cm de longueur d'élastique de 3mm, 1 fermeture à glissière de 23cm.

Tailles	8	10	12	14	16	18	20	22	24	26
Françaises	36	38	40	42	44	46	48	50	52	54
Européen	34	36	38	40	42	44	46	48	50	52

MESURES DU CORPS: Choisissez la taille du patron basée sur les mesures du corps

Poitrine	80	83	87	92	97	102	107	112	117	122	cm
Taille	61	64	67	71	76	81	87	94	99	106	"
Hanches (23cm au-dessous de la taille)											
	85	88	92	97	102	107	112	117	122	127	cm
Dos du cou à la taille	40	40.5	41.5	42	42.5	43	44	44	44.5	44.5	"

Doubleure A,B	115cm* - 0.6m											Entoilage A,B - 51cm - 1.5m											
Robe A	115cm*	1.6	1.6	1.9	1.9	1.9	1.9	2.2	2.2	2.2	2.2	2.2	2.2	2.2	2.2	2.2	2.2	2.2	2.2	2.2	2.2	2.2	m
	150cm*	1.4	1.4	1.4	1.4	1.4	1.4	1.4	1.6	1.6	1.6	1.6	1.6	1.6	1.6	1.6	1.6	1.6	1.6	1.6	1.6	1.6	"
Combinaison B	115cm*	2.7	2.7	2.7	2.9	2.9	2.9	2.9	3.0	3.0	3.2	3.3	3.3	3.3	3.3	3.3	3.3	3.3	3.3	3.3	3.3	3.3	m
	150cm*	2.5	2.5	2.5	2.5	2.5	2.5	2.5	2.5	2.5	2.6	2.6	2.6	2.6	2.6	2.6	2.6	2.6	2.6	2.6	2.6	2.6	"

MESURES DES VÊTEMENTS FINI (Motif et aisance de port compris)

A,B Poitrine	83	85	89	94	99	104	109	114	119	124	cm
A,B Taille	66	69	72	77	83	88	93	98	103	108	"
A,B Hanches	94	97	100	105	110	116	121	126	131	136	"
Largeur à l'ourlet											
Robe A	97	99	103	108	113	118	123	128	133	138	cm
Largeur, chaque jambe											
Combinaison B	80	81	83	84	85	86	88	89	90	91	cm
Longueur finie - dos, votre nuque à l'ourlet											
Robe A	116	117	117	118	119	119	120	121	121	122	cm
Combinaison B	144	145	146	147	149	150	151	152	154	155	"

*avec sens **sans sens



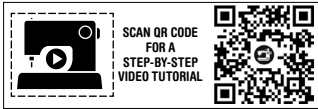
A



B

Simplicity

Thank you for purchasing this Simplicity pattern. We made every effort to provide you with a high quality product.



mi g A DIY & LIFESTYLE BRAND

General Directions

The Pattern

- SYMBOLS**
- GRAIN LINE: Place on straight grain of fabric parallel to selvage
 - PLACE SOLID LINE on fold of fabric.
 - CENTER FRONT OR BACK OF GARMENT.
 - NOTCHES
 - DOTS
 - CUTTING LINE
 - LENGTHEN OR SHORTEN LINES

SEAM ALLOWANCE: 5/8" (1.5cm) unless otherwise stated is included but not printed on MULTI-SIZE PATTERNS. Mark your size with colored felt tip pen. See chart on tissue for how to use MULTI-SIZE PATTERNS.

ADJUST IF NEEDED
Make adjustments before placing pattern on fabric.

TO LENGTHEN: Cut pattern between lengthen or shorten lines. Spread pattern evenly, the amount needed and tape to paper.

TO SHORTEN: At lengthen or shorten lines, make an even pleat taking up amount needed. Tape in place.

When lengthen or shorten lines are not given, make adjustments at lower edge of pattern.

Cutting/Marking

BEFORE CUTTING:
PRESS pattern pieces with a warm dry iron. PRE-SHRINK fabric by pre-washing washables or steam-pressing non-washables.

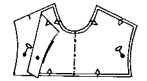
CIRCLE your cutting layout.
PIN pattern to fabric as shown in Cutting Layouts.

- FOR DOUBLE THICKNESS: Fold fabric with RIGHT sides together.
- FOR SINGLE THICKNESS: Place fabric RIGHT side up.
- FOR PILE, SHADED OR ONE WAY DESIGN FABRICS: Use "with nap" layouts

AFTER CUTTING:
Transfer markings to WRONG side of fabric before removing pattern. Use pin and chalk method or dressmaker's tracing paper and wheel.

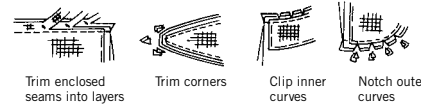
To Quick Mark:

- Snip edge of fabric to mark notches, ends of fold lines and center lines.
- Pin mark dots.



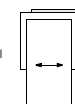
Sewing

- SEW garment following Sewing Directions.
- PIN or machine-baste seams matching notches.
- STITCH 5/8" (1.5 cm) seams unless otherwise stated.
- PRESS seams open unless otherwise indicated clipping when necessary so seams will lie flat.
- TRIM seams to reduce bulk, as shown below.

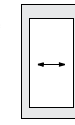


SPECIAL CUTTING NOTES

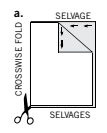
★ If layout shows a piece extending past fold, cut out all pieces except piece that extends.



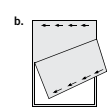
Open out fabric to single thickness. Cut extending piece on RIGHT side of fabric in position shown.



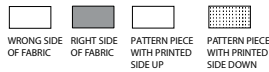
✳ Mark small arrows along both selvages indicating direction of nap or design. Fold fabric crosswise with RIGHT sides together, and cut along fold (a).



Turn one fabric layer around so arrows on both layers go in the same direction. Place RIGHT sides together (b).



Cutting Layouts



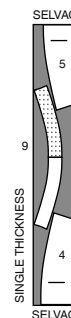
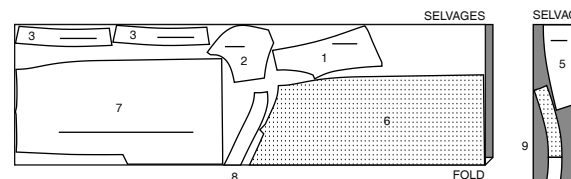
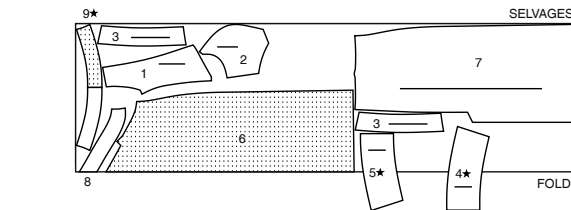
POSITION OF PATTERN PIECES MAY VARY SLIGHTLY ACCORDING TO YOUR PATTERN SIZE

DRESS A

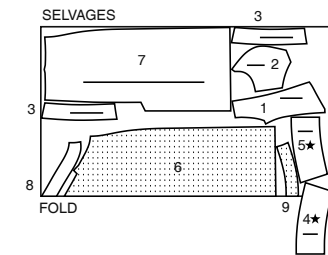
USE PIECES 1 2 3 4 5 6 7 8 9

45" (115CM) WITH NAP SIZES 8 10 12 14 16 18

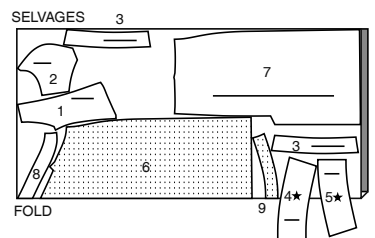
45" (115CM) WITH NAP SIZES 20 22 24 26



60" (150CM) WITH NAP SIZES 8 10 12 14 16 18



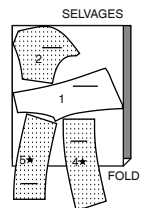
60" (150CM) WITH NAP SIZES 20 22 24 26



LINING A,B

USE PIECES 1 2 4 5

45" (115CM) WITHOUT NAP ALL SIZES

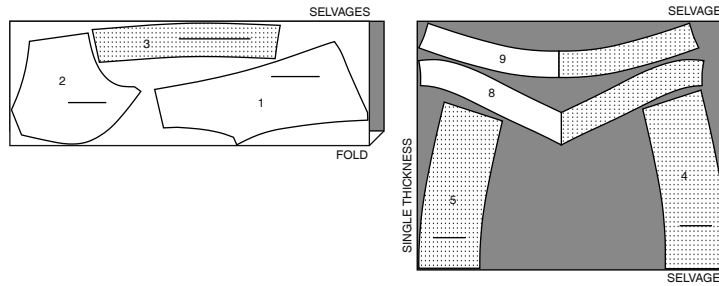


CUTTING LAYOUTS CONTINUED ON PAGE 2

INTERFACING A, B

USE PIECES 1 2 3 4 5 8 9

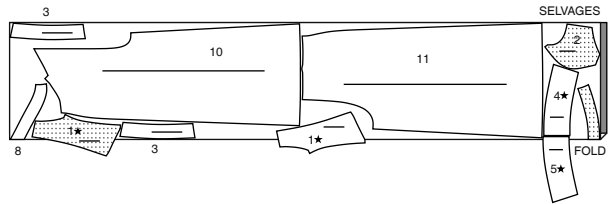
20" (51CM)
ALL SIZES



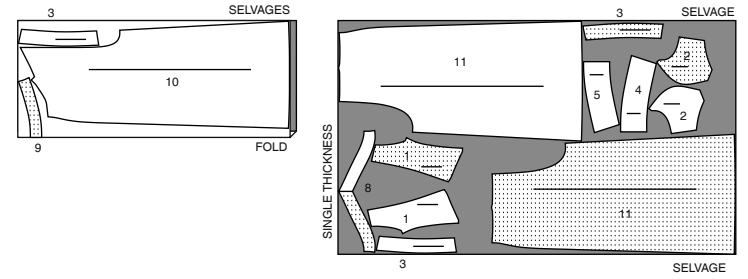
JUMPSUIT B

USE PIECES 1 2 3 4 5 8 9 10 11

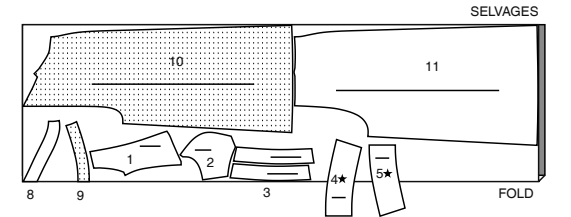
45" (115CM)
WITH NAP
SIZES 8 10 12 14
16 18 20 22



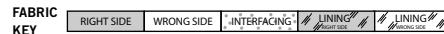
45" (115CM)
WITH NAP
SIZES 24 26



60" (150CM)
WITH NAP
ALL SIZES



Sewing Directions



Read **General Directions** on page 1 before you begin.

GLOSSARY OF SEWING METHODS

Sewing methods shown in **BOLD** are defined below:
STAY-STITCH – Stitch 1/2" (1.3cm) from cut edge in direction of arrows. This stitching stays in permanently to prevent stretching on curved edges. (Shown only in the first illustration.)
UNDERSTITCH – Press facing and seam away from garment, stitching through facing and seam allowances close to seam.

PATTERN PIECES WILL BE IDENTIFIED BY NUMBERS THE FIRST TIME THEY ARE USED.

STITCH 5/8" (1.5CM) SEAMS WITH RIGHT SIDES TOGETHER UNLESS OTHERWISE STATED.

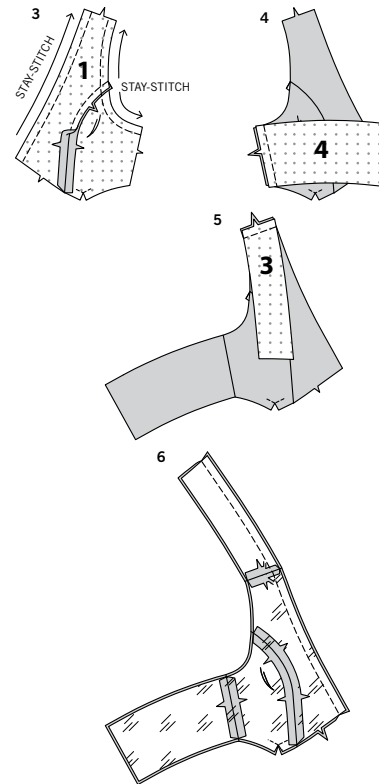
DRESS A, JUMPSUIT B

INTERFACING

1. Pin interfacing to **WRONG** side of **BODICE FRONT (1)**, **BODICE SIDE FRONT (2)**, **BACK STRAP (3)**, **BODICE RIGHT BACK (4)**, **BODICE LEFT BACK (5)**, **FRONT FACING (8)**, and **BACK FACING (9)** sections. Fuse in place following manufacturer's directions.

BODICE

2. To make **RIGHT** bodice, reinforce lower edge of **BODICE SIDE FRONT (2)** at small dot, by stitching along seam line for about 1" (2.5cm) each side of small dot, stitching through dots, as shown. Clip to stitching at dots.

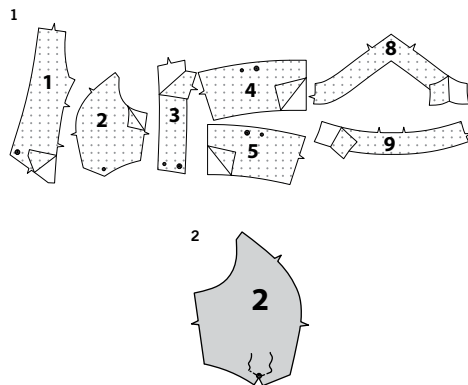
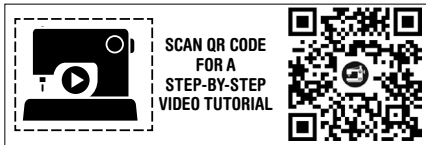


3. **STAY-STITCH** neck and armhole edge of **BODICE FRONT (1)** and armhole edge of bodice side front sections. With **RIGHT** sides together and raw edges even, pin bodice front to bodice side front at side front edges, matching notches. Stitch.

4. With **RIGHT** sides together and raw edges even, pin bodice side front to **BODICE RIGHT BACK (4)** at side edges, matching notches. Stitch.

5. Pin **BACK STRAP (3)** to bodice front along shoulder edges. Stitch. Trim seam.

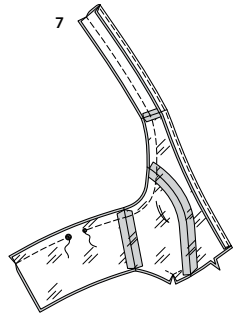
6. Make bodice lining and strap facing in the same manner as bodice. With **RIGHT** sides together and raw edges even, pin lining to bodice along front neck edge and inner edge of strap. Stitch. Trim seam.



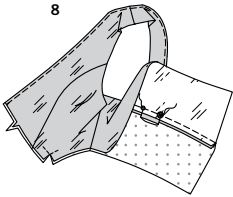
S9945

3 of 4

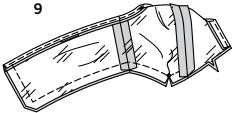
7



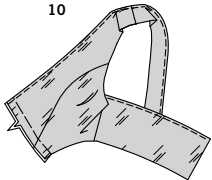
8



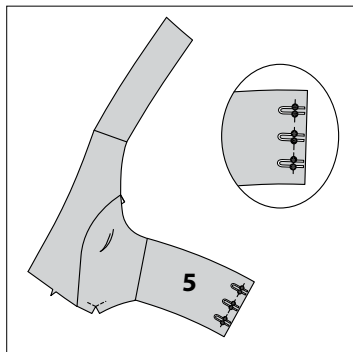
9



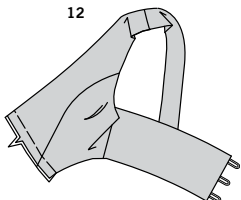
10



11



12



7. UNDERSTITCH the lining and strap facing. With **RIGHT** sides together and raw edges even, pin lining to bodice along remaining upper edges and strap facing. Stitch strap, armhole, and upper back edges, leaving an opening between the large and small dots for strap. Trim seam.

8. Turn lining and strap; press. On **OUTSIDE**, insert back edge of strap into opening, matching small and large dots. Open out lining and bodice with **RIGHT** sides together. Stitch across strap.

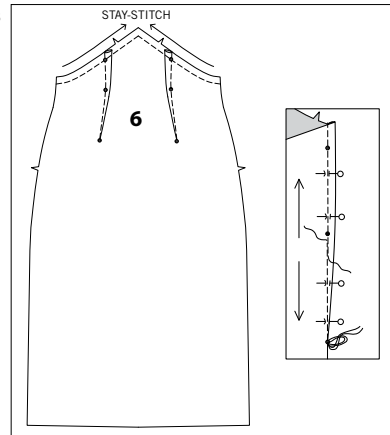
9. UNDERSTITCH the lining. With **RIGHT** sides together and raw edges even, pin lining to bodice along remaining edges. Stitch center back edge and lower edge of back to small dot on side front. Back-stitch at dot to reinforce the seam. Trim seam and corners; clip curves.

10. Turn lining to inside through opening in lower front edge. Press, pressing out strap. Baste raw edges together.

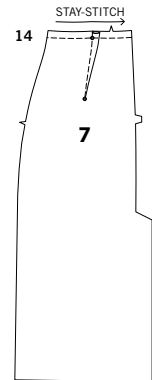
11. Make **LEFT** bodice in the same manner as **RIGHT** bodice, using **BODICE LEFT BACK (5)** for bodice back. Cut elastic cord into three 1-3/4" (4.5cm) long pieces. Fold in half, forming loops. On **OUTSIDE**, pin ends of elastic to center back over small dots with raw edges even. Baste.

12. Complete **LEFT** bodice with lining and facing in the same manner as **RIGHT** bodice.

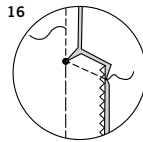
13



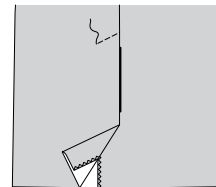
14



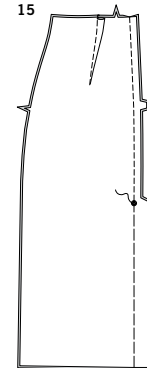
16



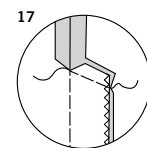
18



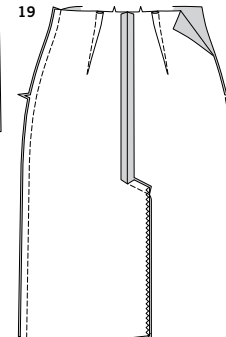
15



17



19



SKIRT A

13. STAY-STITCH upper edge of **SKIRT FRONT (6)**. To make darts in front with **RIGHT** sides together, bring broken lines together, matching small dots. Stitch along broken line from wide end to point. Press dart toward center.

14. STAY-STITCH upper edge of **SKIRT BACK (7)**. Make darts in back sections. Press dart toward center.

15. Edge finish long edge of vent extensions by, zig zag stitching, overlock stitching, or stitching under 1/4" (6mm). With **RIGHT** sides together, pin back sections together, matching large dots and notches. To form vent and stitch center back seam, starting at lower edge, machine-baste along solid line to large dot. Stitch along seam line above the large dot. Back-stitch at dot to reinforce seam.
TIP – The vent is basted closed to achieve a crisp fold after vent is pressed in place.

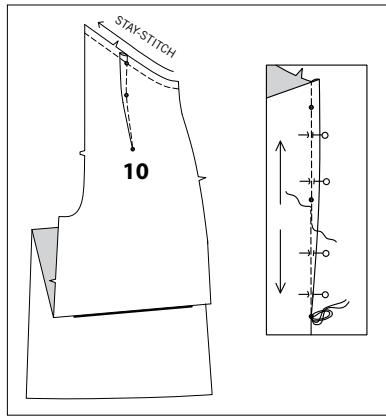
16. To reinforce inner corner and stitch upper end of vent extensions together, starting 1" (2.5cm) above large dot, stitch along seam line to large dot; pivot at large dot and stitch across upper end of vent extensions.
Clip **RIGHT** back to large dot at inner corner.

17. Press seam open above clip. Press vent extension toward **LEFT** back. Baste upper end of vent extension in place along stitching.

18. On **OUTSIDE**, stitch **LEFT** back along basting, as shown. Remove basting from vent.

19. Stitch skirt front to skirt back at **RIGHT** side edges.

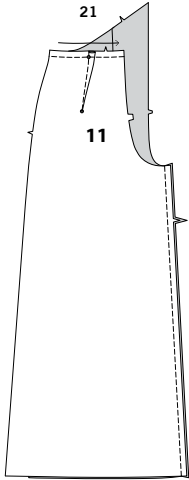
20



PANTS B

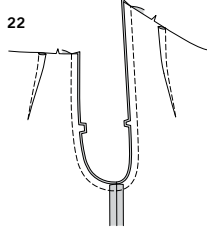
20. STAY-STITCH upper edge of PANTS FRONT (10). To make darts in front with RIGHT sides together, bring broken lines together, matching small dots. Stitch along broken line from wide end to point. Press dart toward center.

21



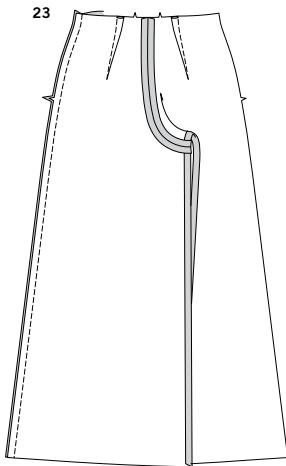
21. STAY-STITCH upper edge of PANTS BACK (11). Make darts in back sections. Press dart toward center. Pin pants front to pants back at inner leg edges. Stitch.

22



22. With RIGHT sides together, pin center seam, matching inner leg seams and notches. Stitch. To reinforce seam, stitch again over first stitching.

23



23. With RIGHT sides together and raw edges even, pin pants front to pants back at RIGHT side edges, matching notches. Stitch.

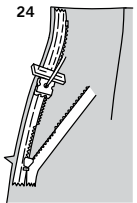
CONTINUE AS FOLLOWS FOR BOTH VIEWS

NOTE: The zipper is longer than the zipper opening and will be adjusted after the zipper is inserted.

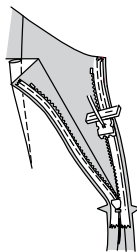
24. Open the zipper and press the tape flat on the WRONG side unrolling the coils. Do not press the coils. (Use a low iron setting.) ON OUTSIDE, pin RIGHT side of the zipper face down on the RIGHT side of the zipper opening. Have the coil along the seam line, the tape within the seam allowance and the top stop 3/4" (2cm) below upper edge, as shown. Hand-baste along center of the tape. Position zipper foot at the top of the zipper with RIGHT groove of the foot over coil. Stitch along tape to the notch. Back-stitch to reinforce.

25. Pin the remaining half of the zipper to the LEFT side of the zipper opening in same manner. Make sure the upper and lower edges of the garment are even. Hand-baste along the center of the tape. Position zipper foot at the top of the zipper with LEFT groove over the coil. Stitch along tape to the notch. Back-stitch to reinforce.

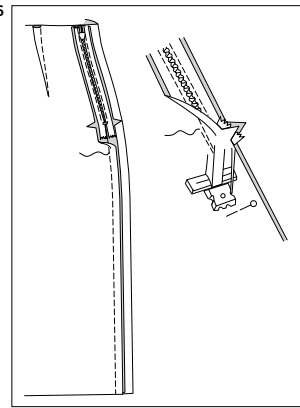
24



25

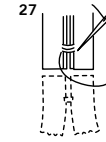


26



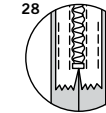
26. Close zipper and check that it is invisible from the OUTSIDE. Pull the free ends of the zipper tape away from the seam allowance. Pin remaining left side seam together below zipper. Position zipper foot all the way to the LEFT so the needle goes down through the outer notch of the foot. Start stitching seam 1/4" (6mm) above lowest stitch and slightly to the LEFT. Stitch seam for about 3" (7.5cm). Stitch remainder of seam using your regular presser foot.

27



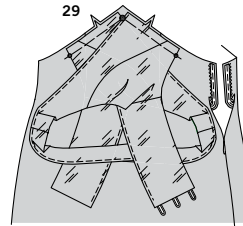
27. If the zipper is longer than the opening, using a strong thread, hand-sew a few small stitches across ends of coils at end of opening. Trim away lower end of zipper tape to within 5/8" (1.5cm) of hand-stitches.

28



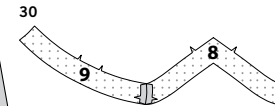
28. If you prefer, open out each seam allowance at end of zipper and stitch tape to seam allowance.

29



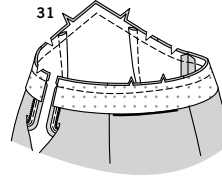
29. With RIGHT sides together and raw edges even, pin lower edge of bodice sections to upper edge of skirt or pants, matching small dots, large dots, and notches. Baste.

30



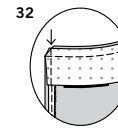
30. Stitch FRONT FACING (8) to BACK FACING (9) at RIGHT side edges. If you prefer, edge finish unnotched edge by, zig zag stitching, overlock stitching, or stitching under 1/4" (6mm), clipping to center as necessary.

31



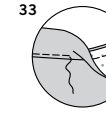
31. Open out LEFT side opening edges of garment, rolling the zipper teeth away from the opening edge. With RIGHT sides together, pin facing to garment, matching centers and side seams. Stitch upper edge. Trim seam; clip curves.

32



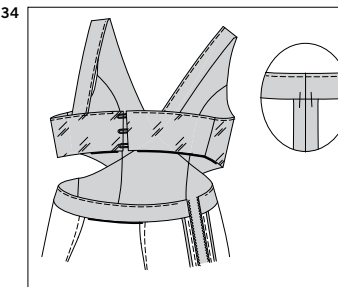
32. Pin LEFT side opening edges together. Using an adjustable zipper foot, stitch 1/2" (1.3cm) from LEFT edges, keeping zipper teeth free. Trim corners. Do not trim LEFT side edges.

33



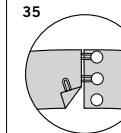
33. UNDERSTITCH by pressing facing and seam away from garment, stitching through facing and seam allowances close to seam as far as possible.

34



34. Turn facing and LEFT side edges to INSIDE, rolling zipper teeth back in place; press. To keep the facing from rolling to OUTSIDE, secure it at the RIGHT seam allowance by tacking it by hand.

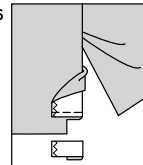
35



FINISHING

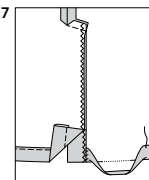
35. Sew buttons to bodice right back at small dots.

36



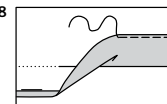
36. FOR VIEW A – Turn LEFT vent facing to OUTSIDE. Stitch 1-1/4" (3.2cm) from lower edge of facing. Trim facing close to stitching. Trim garment to within 5/8" (1.5cm) of inner edge of facing.

37



37. Turn facing to INSIDE, pressing up hem. Turn under raw edge 1/4" (6mm). Stitch close to inner pressed edge starting at opening edge.

38



38. FOR VIEW B – Press up hem allowance. Turn under raw edge 1/4" (6mm). Stitch close to inner pressed edge.



Congrats!

You've completed your sewing adventure

**SHARE
YOUR** LOOK



Post your pattern and tag us
@simplicity_creative_group and **#simplicitypatterns**
for a chance to be featured on our social media.

Look for more PDF patterns at [simplicity.com](https://www.simplicity.com)

Have a question or need help with your sewing project call us at
1-888-588-2700



Simplicity ©2024 a division of IG Design Group Americas Inc. • Atlanta, GA 30342 USA www.thedesigngroup.com • All Rights Reserved. www.simplicity.com • Made in the U.S.A. Fabriqué aux États-Unis.

To be used for individual private home use only and not for commercial or manufacturing purposes. • A usage privé seulement et non à des fins commerciales ou de production en série. • Para uso privado solamente, no se puede utilizar con propósitos de comercialización o de producción en serie.