

S9944

Simplicity[®] COSTUMES



easy-to-sew



Shop all the pattern brands you love @

Simplicity[®].com

Easy

MISSES' CAPE IN TWO LENGTHS AND CAPELET

Suggested Fabrics: A,B,C: Gabardine, Linen, Silk Noil, Twill, Wool/Wool Blends. **Contrast C:** Metallics, Satin, Silk. **Lining:** China Silk, Poly Taffeta, Rayon Challis, Satin, Silky Habotai.

Interfacing: Fusible Hair Canvas. (Note: View B, lining will show).

Notions: A: Two ½" (1.3cm) hook and eyes, 1½ yds. (0.9m) of ¼" (6mm) braid trim. B: 5½ yds. (5.1m) of ¾" (2cm) trim, 2" x 3" (5cm x 8cm) button. C: One ½" (1.3cm) hook and eye.

Sizes	XS (4-6)	S (8-10)	M (12-14)	L (16-18)	XL (20-22)	
Sizes-European	30-32	34-36	38-40	42-44	46-48	

Cape A	60**	7½	7½	7½	7½	Yds.
	150cm*	6.5	6.6	6.7	6.9	m
Lining	60**	5½	5½	6	6½	Yds.
	150cm*	5.3	5.3	5.5	5.6	m
Interfacing	20" - ¾ yd. (51cm 0.6m)					

Cape B	45**	3½	3%	3%	3%	4%	Yds.
	60**	2%	2½	2½	3	3½	"
	115cm*	3.2	3.3	3.4	3.5	3.7	m
	150cm*	2.2	2.3	2.4	2.7	2.9	"
Lining	45**	3%	3½	3%	3½	3%	Yds.
	60**	2%	2%	2½	2%	2½	"
	115cm*	3.0	3.0	3.1	3.2	3.3	m
	150cm*	1.9	1.9	1.9	2.4	2.4	"
Interfacing	20" - 1½ yds. (51cm 1.1m)						

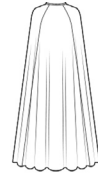
Capelet C	45**	¾	¾	¾	¾	¾	Yd.
	60**	½	½	¾	¾	¾	"
	115cm*	0.7	0.7	0.7	0.7	0.7	m
	150cm*	0.5	0.5	0.6	0.6	0.6	"
Contrast (Binding) - 45, 60" - 1½ yds. (115, 150cm - 1.0m)							
Lining	45**	¾	¾	¾	¾	¾	Yd.
	60**	½	½	¾	¾	¾	"
	115cm*	0.6	0.6	0.7	0.7	0.7	m
	150cm*	0.5	0.5	0.5	0.5	0.6	"
Interfacing	20" - ¾ yd. (51cm 0.2m)						

FINISHED GARMENT MEASUREMENTS (Includes Design and Wearing Ease)

Finished back length from base of neck

Cape A	59½ (151)	60 (152)	60½ (154)	61 (155)	61½ (156)	Ins. (cm)
Cape B	32½ (83)	33½ (84)	33½ (86)	34½ (87)	34½ (88)	Ins. (cm)
Cape C	13 (33)	13½ (34)	14 (36)	14½ (37)	15 (38)	Ins. (cm)

*with nap **without nap



A



B



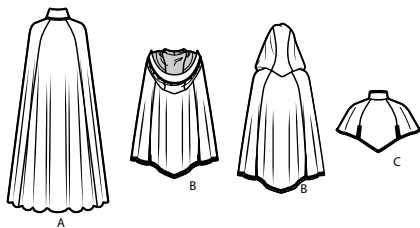
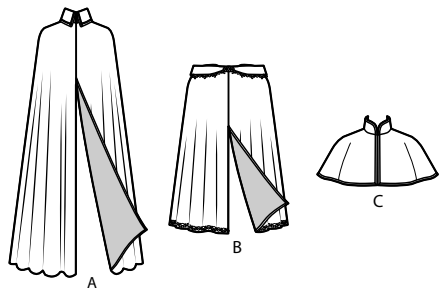
B



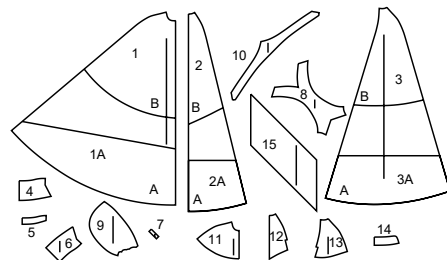
C

Simplicity® S9944

Thank you for purchasing this Simplicity pattern.
We made every effort to provide you with a high quality product..

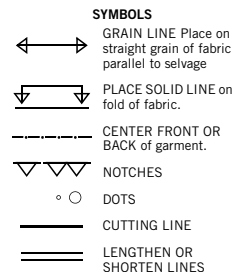


15 PIECES



- 1 (1A) Front-A-B
2 (2A) Back-A-B
3 (3A) Side Back-A-B
4 Upper Collar-A
5 Collar Interfacing-A
6 Undercollar-A
7 Loop-B
8 Hood Center-B
9 Hood Side-B
10 Hood Band-B
11 Front-C
12 Back-C
13 Side Back-C
14 Collar-C
15 Block for Binding-C

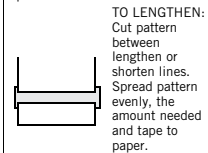
The Pattern



SEAM ALLOWANCE: 5/8" (1.5cm) unless otherwise stated is included but not printed on MULTI-SIZE PATTERNS. Mark your size with colored felt tip pen. See chart on tissue for how to use MULTI-SIZE PATTERNS.

ADJUST IF NEEDED

Make adjustments before placing pattern on fabric.



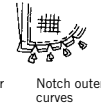
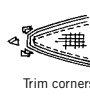
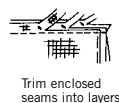
TO LENGTHEN:
Cut pattern between lengthen or shorten lines. Spread pattern evenly, the amount needed and tape to paper.

TO SHORTEN:
At lengthen or shorten lines, make an even pleat taking up amount needed. Tape in place.

When lengthen or shorten lines are not given, make adjustments at lower edge of pattern.

Sewing

- SEW garment following **Sewing Directions**.
- PIN or machine-baste seams matching notches.
- STITCH 5/8" (1.5 cm) seams unless otherwise stated.
- PRESS seams open unless otherwise indicated clipping when necessary so seams will lie flat.
- TRIM seams to reduce bulk, as shown below.



General Directions

Cutting/Marking

BEFORE CUTTING:
PRESS pattern pieces with a warm dry iron. PRE-SHRINK fabric by pre-washing washables or steam-pressing non-washables.

CIRCLE your cutting layout.

PIN pattern to fabric as shown in Cutting Layouts.

• FOR DOUBLE THICKNESS: Fold fabric with RIGHT sides together.

• FOR SINGLE THICKNESS: Place fabric RIGHT side up.

• FOR PILE, SHADED OR ONE WAY DESIGN FABRICS: Use "with nap" layouts

AFTER CUTTING:
Transfer markings to WRONG side of fabric before removing pattern. Use pin and chalk method or dressmaker's tracing paper and wheel.

To Quick Mark:

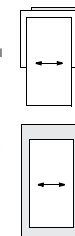
- Snip edge of fabric to mark notches, ends of fold lines and center lines.
- Pin mark dots.



SPECIAL CUTTING NOTES

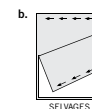
★ If layout shows a piece extending past fold, cut out all pieces except piece that extends.

Open out fabric to single thickness. Cut extending piece on RIGHT side of fabric in position shown.

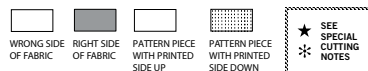


✱ Mark small arrows along both selvages indicating direction of nap or design. Fold fabric crosswise with RIGHT sides together, and cut along fold (a).

Turn one fabric layer around so arrows on both layers go in the same direction. Place RIGHT sides together (b).



Cutting Layouts



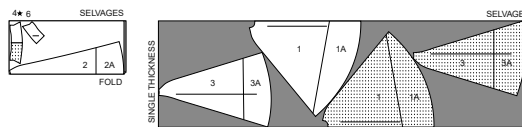
POSITION OF PATTERN PIECES MAY VARY SLIGHTLY ACCORDING TO YOUR PATTERN SIZE

CAPE A

USE PIECES 1 (1A) 2 (2A) 3 (3A) 4 6

NOTE: BEFORE CUTTING FABRIC, JOIN PIECES IN PARENTHESIS TO CORRESPONDING PIECES FOLLOWING INSTRUCTIONS ON TISSUE PATTERN.

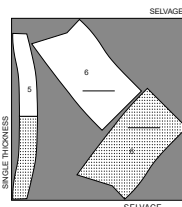
60" (150CM) WITH NAP
ALL SIZES



INTERFACING A

USE PIECES 5 6

20" (51CM)
ALL SIZES

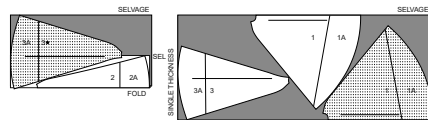


LINING A

USE PIECES 1 (1A) 2 (2A) 3 (3A)

NOTE: BEFORE CUTTING FABRIC, JOIN PIECES IN PARENTHESIS TO CORRESPONDING PIECES FOLLOWING INSTRUCTIONS ON TISSUE PATTERN.

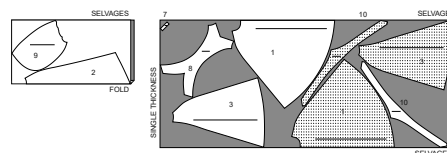
60" (150CM)
WITHOUT NAP
ALL SIZES



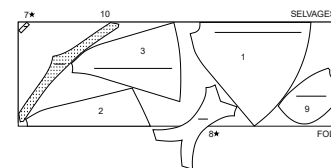
CAPE B

USE PIECES 1 2 3 7 8 9 10

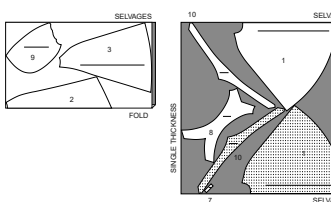
45" (115CM)
WITH NAP
ALL SIZES



60" (150CM) WITH NAP
SIZES XS S M



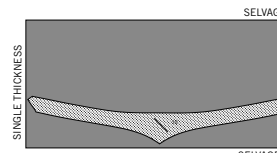
60" (150CM) WITH NAP
SIZES L XL



INTERFACING B

USE PIECE 10

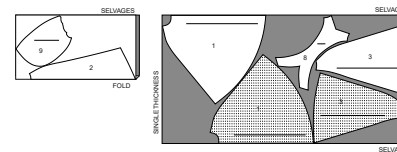
20" (51CM)
ALL SIZES



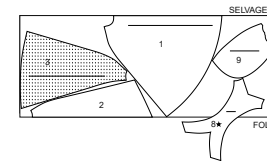
LINING B

USE PIECES 1 2 3 8 9

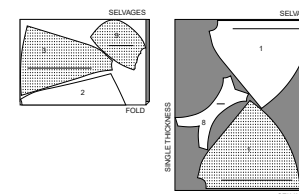
45" (115CM)
WITHOUT NAP
ALL SIZES



60" (150CM)
WITH NAP
SIZES XS S M



60" (150CM)
WITH NAP
SIZES L XL



S9927

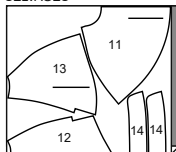
2 of 6

CAPELET C

USE PIECES 11 12 13 14

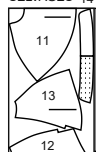
45" (115CM)
WITH NAP
ALL SIZES60" (150CM)
WITH NAP
ALL SIZES

SELVAGES



FOLD

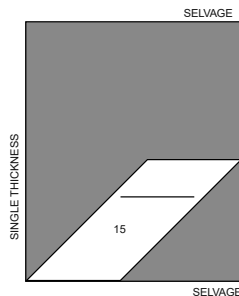
SELVAGES 14



FOLD

CONTRAST BINDING

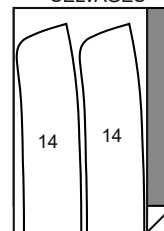
USE PIECE 15

45" to 60" (115CM TO 150CM)
WITH NAP
ALL SIZES**INTERFACING C**

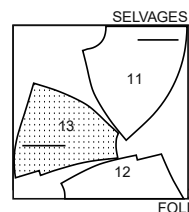
USE PIECE 14

20" (51CM)
ALL SIZES

SELVAGES

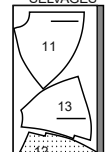
**LINING C**

USE PIECES 11,12,13

45" (115CM)
WITHOUT NAP
ALL SIZES60" (150CM)
WITHOUT NAP
ALL SIZES

FOLD

SELVAGES

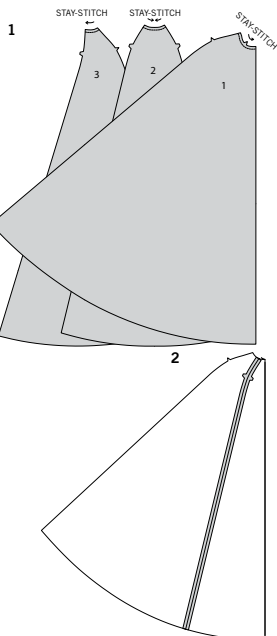


FOLD

SEWING TUTORIALS



SCAN ME

Build your skills viewing short, easy-to-follow videos at
[simplicity.com/sewingtutorials](https://www.simplicity.com/sewingtutorials)**Sewing Directions**FABRIC
KEYSewing methods in **BOLD TYPE** have Sewing Tutorial Video available.
Scan QR CODE to watch videos:**DART** - see **Darts**: "sewing flat dart" video.**EDGESTITCH** - see **Machine Stitches**: "how to edgestitch" video.**NARROW HEM** - see **Hems**: "sewing narrow hems" video.**REINFORCE** - see **Machine Stitches**: "how to reinforce" video.**SLIPSTITCH** - Slide needle through a folded edge, then pick up a thread of underneath fabric.**STAYSTITCH** - see **Machine Stitches**: "how to do stay-stitching" video.**STITCH IN THE DITCH** - see **Machine Stitches**: "how to stitch in the ditch" video.**TOPSTITCH** - see **Machine Stitches**: "how to topstitch" video.**TRIM** - see **How to Sew: Trim, Clip, and Layer Seams** video.**UNDERSTITCH** - see **Machine Stitches**: "how to understitch" video.**PATTERN PIECES WILL BE IDENTIFIED BY NUMBERS THE FIRST TIME THEY ARE USED.****STITCH 5/8" (1.5CM) SEAMS WITH RIGHT SIDES TOGETHER UNLESS OTHERWISE STATED.****CAPE A****1. STAYSTITCH** neck edge of front (1), back (2), and side back (3) sections in direction of arrows.

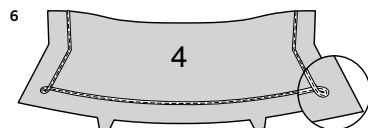
Staystitching will not be shown in the following illustrations.

2. Stitch side back to back, matching double notches.**3.** Stitch front to back at side seams.**REINFORCE** seamline along shoulder curves.
Clip curves where reinforced.**4.** Trim 1" (2.5cm) from lower edge of front, back and side back lining sections.Stitch lining sections and **STAYSTITCH** neck edge same as for cape. With **RIGHT** sides together, pin lining to cape along neck and front edges.

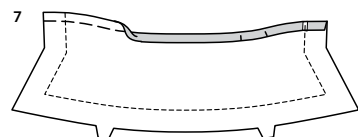
Stitch front edges, ending 5" (13cm) above lower edge of lining, back-stitching to reinforce seam.

5. UNDERSTITCH front edges to within 6-1/2" (16.5cm) of lower edge of lining.Turn cape **RIGHT** side out; press.

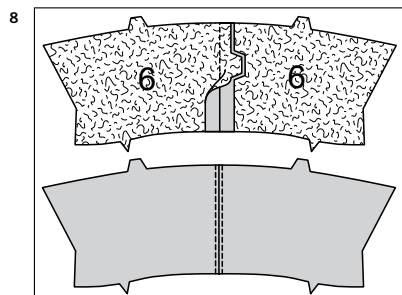
Machine-stitch neck edges 1/2" (1.3cm) from raw edges, matching centers back and seams.



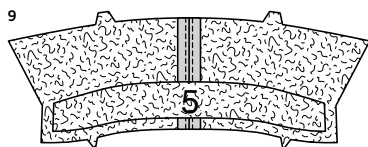
- 6.** On **OUTSIDE**, pin braid trim to front and double-notched edges of upper collar (4) approximately 1-1/8" (2.8cm) away from raw edges, easing in fullness at inner corners, forming a loop at corners as shown. Stitch in place.



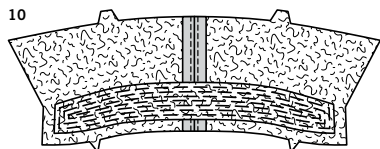
- 7.** Machine-baste 1/2" (1.3cm) from long unnotched edge of upper collar. Press under along basting, easing in fullness along curves.



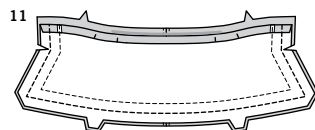
- 8.** Fuse interfacing to **WRONG** side of under collar (6) sections, following manufacturer's directions. Stitch sections together at center back seam matching triple-notches. Press seam open. On **OUTSIDE**, **EDGE**STITCH on each side of center back seam. **TIP** - To reduce bulk, before applying interfacing, cut it diagonally across corners that will be enclosed with seams. Repeat with undercollar.



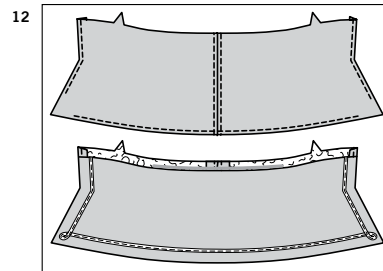
- 9.** Fuse collar interfacing (5) to **WRONG** side of interfaced under collar, having outer edges along 5/8" seam line.



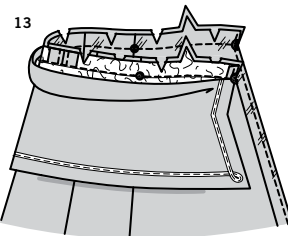
- 10.OPTIONAL-** Mark **COLLAR INTERFACING** as follows, using a washable fabric marking pen or pencil OR hand-basting: Make three concentric oblong boxes, each approximately 1/4" (6mm) apart, having first box 1/4" (6mm) in from outer edges. It may be necessary to stitch a single row in the center to fill up the space. Stitch along markings. **Don't worry about achieving perfection here. The stitching won't be seen when wearing the cape; its purpose is to support the finished collar so that the lower part will stand up.**



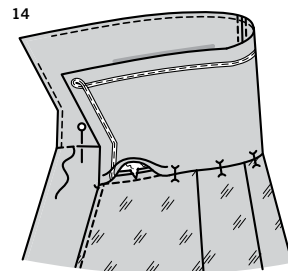
- 11.** Pin upper collar to under collar, having **RIGHT** sides together and raw edges even. Stitch, leaving neck edge open, as shown. **TRIM** seam and corners; clip curves.



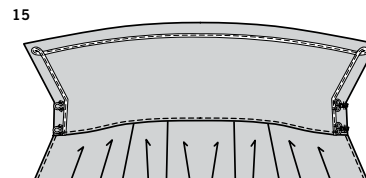
- 12.UNDERSTITCH** under collar as far as possible. Turn collar **RIGHT** side out; press.



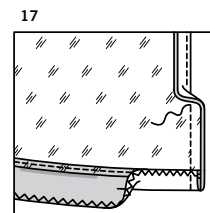
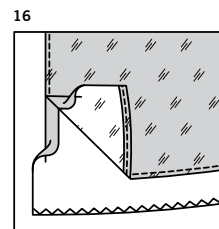
- 13.**Clip neck edge of cape to stitching along curves. On **OUTSIDE**, pin under collar to neck edge, matching centers back and large dots, placing small dots at shoulder seams. Baste. Stitch, being careful not to catch in pressed edge of upper collar. **TRIM** seam; clip curves.



- 14.**Press seam toward collar. On **INSIDE**, pin pressed edge of upper collar 1/8" (3mm) over seam, placing pins on **OUTSIDE**. On **OUTSIDE** **STITCH IN THE DITCH**, catching in pressed edge on **INSIDE**. **TIP** - To conceal the stitches in the ditch or groove of seam, try using a zipper foot, spreading collar and cape away from seam with your fingers.



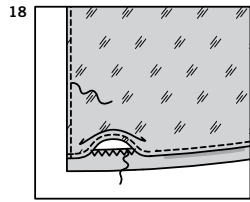
- 15.**Sew two hook and eyes to collar below roll line as indicated on tissue pattern, having lower set alongside neck seam, as shown.



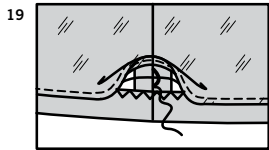
NOTE: To prevent dips in the hem, hand cape overnight, allowing fabric grain time to "settle in". Try on cape. Mark length of cape. Trim depth of cape hem evenly, allowing 1" (2.5cm) for hem allowance. Trim lining 1" (2.5cm) shorter than cut edge of cape.

- 16.**Make a 5/8" **NARROW HEM** on lower edge of lining. Zigzag or overlock/serge lower raw edge of cape, being careful not to trim off any fabric if using your serger.

- 17.**With **RIGHT** sides together, pin remaining front edges of cape and lining, having outer raw edges even (raw edge of cape will extend 1-5/8" (4cm) below finished edge of lining). Turn 1" (2.5cm) cape hem allowance over **WRONG** side of lining; stitch front edges. **TRIM** seam.

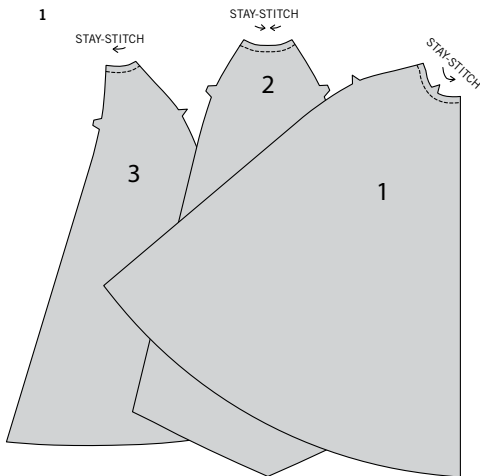


- 18.** Turn front corners RIGHT side out. Press, pressing up hem allowance on cape.
UNDERSTITCH remaining front edge of lining.
SLIPSTITCH hem in place.

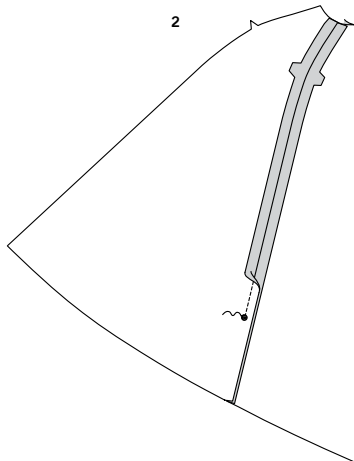


- 19.** Secure lining and cape hems together at seams with 3/4" (2cm) long French tacks.

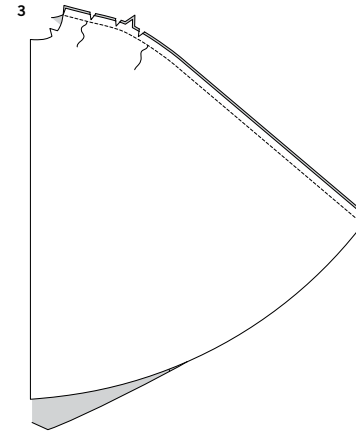
CAPE B



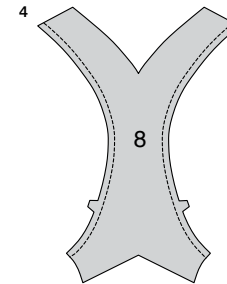
- 1.** **STAYSTITCH** neck edge of front (1), back (2), and side back (3) sections in direction of arrows.
 Staystitching will not be shown in the following illustrations.



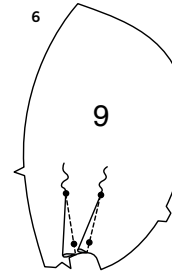
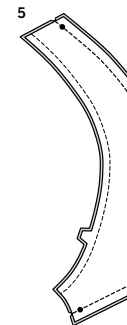
- 2.** Pin side back to back, matching double notches and large dots.
 Stitch seam above large dot, back-stitching at large dot to reinforce seam.



- 3.** Stitch front to back at side seams.
REINFORCE seamline along shoulder curves.
 Clip curves where reinforced.

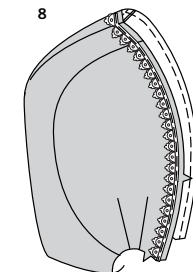
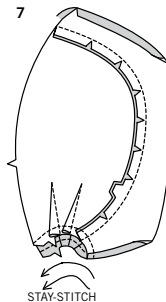


- 4.** Machine-stitch long edges of hood center (8) 1/2" (1.3cm) away from raw edges.



- 5.** To stitch each dart seam in hood center, with RIGHT sides together, bring broken lines together, carefully matching small dots. Stitch from outer edge to small dot.
TIP- To prevent a "bubble" at the point, make the last few stitches right on the fold and leave the thread ends long enough to tie a knot. DO NOT back-stitch at the point.
 Press dart seam flat along stitching to "blend" stitches, then press dart open as far as possible.

- 6.** Make **DARTS** in hood side (9) sections, matching small dots, stitching from wider end to point; press toward single notched edge.

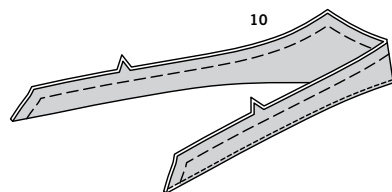


- 7.** Clip side edges of hood center to stitching.
 Pin hood sides to hood center matching double notches. Stitch.
 Press seams toward hood sides.
STAYSTITCH neck edge in direction of arrows.

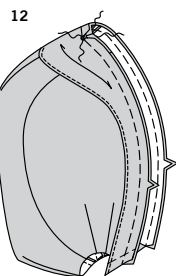
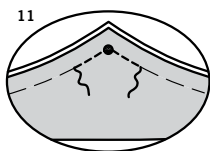
- 8.** On OUTSIDE, pin trim to front edges of hood, having scalloped edge facing inward and straight edge 3/8" (1cm) away from raw edge, folding in fullness at center front.
 Baste close to straight edge.



- 9.** Fuse interfacing to **WRONG** side of one hood band (10) section. Stitch long straight edges of band sections together. **TRIM** seam.

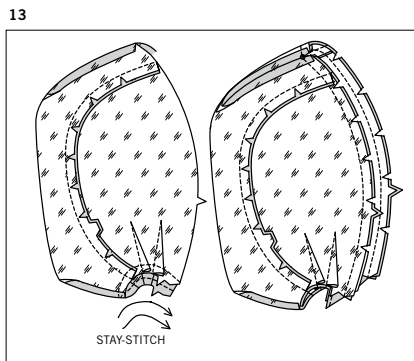


- 10. UNDERSTITCH** uninterfaced band section; this will be the band facing. Turn band **RIGHT** side out; press. Baste raw edges together.

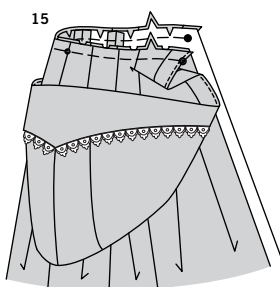
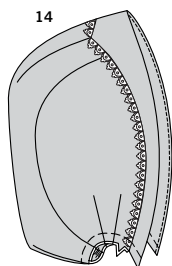


- 11.** To **REINFORCE** pointed edge of hood band, stitch along seam line for about 1" (2.5cm) of each side of small dot, stitching through small dot.

- 12.** With **RIGHT** sides together and raw edges even, pin band (band side) to hood, matching small dots. Baste, breaking and reinforcing stitches at small dot. Clip band seam allowance to small dot, being careful not to clip into stitching.



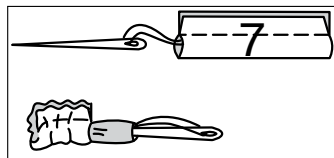
- 13.** Stitch hood lining and **STAYSTITCH** neck edge same as for hood. With **RIGHT** sides together and raw edges even, pin front edge of lining and hood together (sandwiching band), matching seams and small dots. Stitch, pivoting with needle in fabric at small dot, being careful not to catch in free edges of band. **TRIM** seam; clip curves.



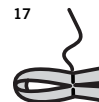
- 14.** Turn hood **RIGHT** side out, turning out band. Press. Baste raw edges together, matching seams.

- 15.** Clip neck edge of cape to staystitching along curves. With **RIGHT** sides together, pin hood to neck edge of cape, matching centers back, large dots, and seams on each side of center back. Baste.

16

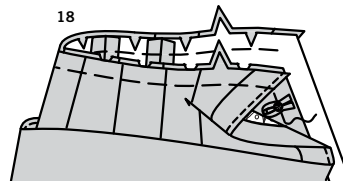


- 16.** Fold loop (7) in half, lengthwise, with **RIGHT** sides together. Stitch a scant 1/4" (6mm) from fold edge, stretching loop while stitching. With a needle, attach a strong thread to one end of loop. Draw needle eye forward, through fold, turning loop **RIGHT** side out.



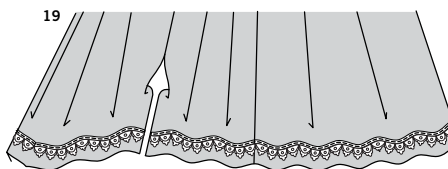
- 17.** Fold loop in half, bringing ends together, as shown. Hand-tack inner edges together within seam allowance.

18



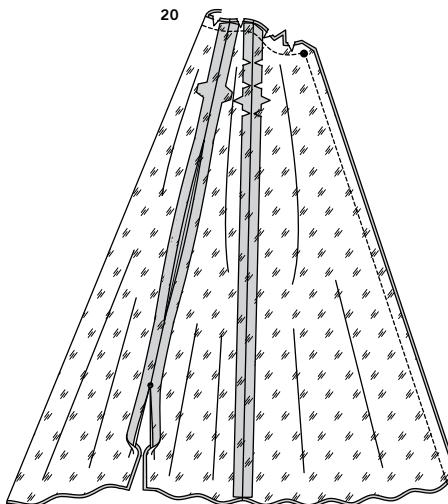
- 18.** On **OUTSIDE**, center loop over small dot on **RIGHT** front, having raw edges even; baste in place

19



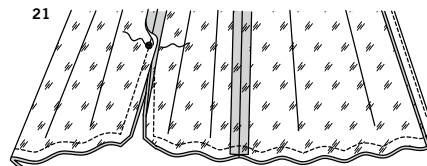
- 19.** Pin straight edge of trim to lower edge of cape sections 1-5/8" (4cm) above raw edges, having scalloped edge facing down. Ease or fold in fullness at center back. Stitch.

20

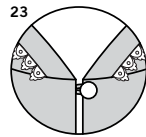
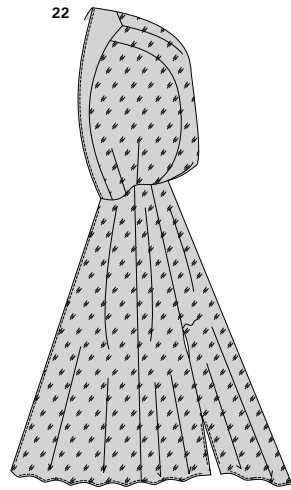


- 20.** Stitch seams of cape lining and **STAYSTITCH** same as for cape, leaving an opening in one side back seam for turning and **UNDERSTITCHING**. With **RIGHT** sides together and raw edges even, pin lining to cape at front and neck edges (sandwiching hood), matching large dots. Stitch front and neck edges.

21



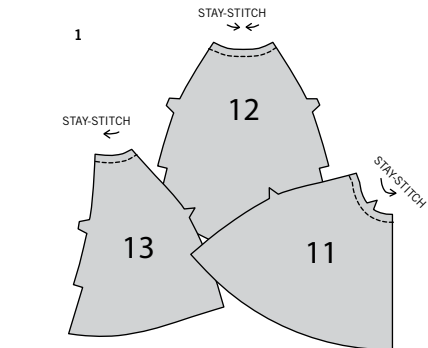
- 21. UNDERSTITCH** lining to within 1-1/2" (3.8cm) of lower edges, **UNDERSTITCHING** upper and neck edges as far as possible. Pin remaining raw edges of cape and lining together, matching large dots at slit openings. Stitch, breaking and reinforcing seams at large dots. **TRIM** seam and corners; clip curves.



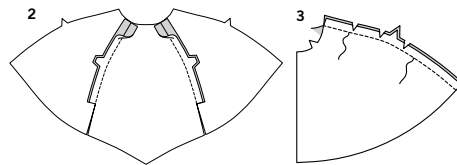
22. UNDERSTITCH slit and lower edges of lining as far as possible. Turn cape through opening in lining, turning out hood. Press. **SLIPSTITCH** opening closed.

23. Bring front edges together so that they meet. Sew button to LEFT front under loop.

CAPE C



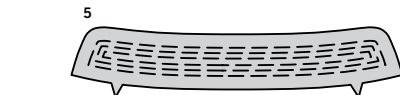
1. STAYSTITCH neck edge of front (11), back (12), and side back (13) sections in direction of arrows. Staystitching will not be shown in the following illustrations.



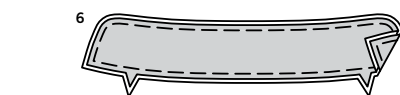
2. With RIGHT sides together and raw edges even, stitch side extension edges of back and side back together, matching double notches.



3. Stitch front to back at side seams. **REINFORCE** seamlines along shoulder curves. Clip curves where reinforced.

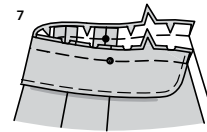


4. Fuse interfacing to WRONG side of each collar (14) section, following manufacturer's directions.

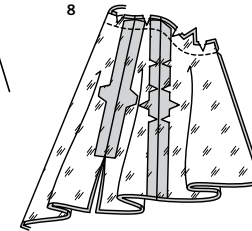


5. OPTIONAL- On OUTSIDE (or if you prefer, on INSIDE), mark one collar section, as follows: Using a washable fabric marking pen or pencil OR hand-basting, mark three concentric oblong boxes, each approximately 1/4" (6mm) apart, centering between neck seam and finished edge of binding (binding will finish approximately 1/2" (1.3cm) from upper raw and side edges). It may be necessary to stitch a single row in the center between end stitching to fill up the space. Stitch along markings. **Don't worry about achieving perfection here. The stitching won't be seen when wearing the cape; its purpose is to support the finished collar.**

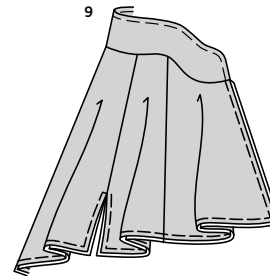
6. Pin collar to facing along outer edges, having WRONG sides together and raw edges even. Baste 1/4" (6mm) from raw edges.



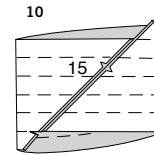
7. Clip neck edge of cape to staystitching along curves. On OUTSIDE, baste collar (side without stitching) to neck edge, matching centers back and placing small dots at shoulder seams, having raw edges even.



8. Stitch lining sections and **STAYSTITCH** neck edge same as for cape. With RIGHT sides together and raw edges even, pin lining to coat along neck edge (sandwiching collar), matching centers and seams. Stitch neck edge. **TRIM** seam; clip curves.



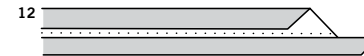
9. Turn cape RIGHT side out; press. With WRONG sides together and raw edges even, pin raw edges of lining and cape together, matching centers back and seams. Baste 1/4" (6mm) from raw edges.



10. With RIGHT sides together, fold block for binding (15) into a tube. Match lines and notches so that one width of binding extends beyond top and bottom end, as shown. Stitch in a 1/4" (6mm) seam and press open. Cut along bottom of strip and continue cutting in a spiral until the end of the line.



11. To create double fold bias binding from your strip, with WRONG sides together fold strip lengthwise so that both long edges are 1/8" (3mm) apart, as shown. Press fold edge, setting in a crease.



12. Open out fold and turn both long edges to WRONG side so that they just meet at the crease; press.



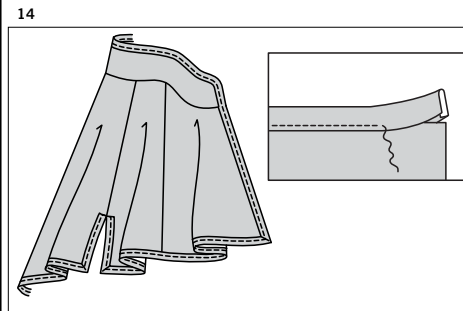
13. Fold strip along crease, encasing turned edges. Trim ends so that they are straight, as shown. You will notice that one edge is wider than the other. The wider side is to be used on the INSIDE so that when the binding is stitched in place from the OUTSIDE, both edges are sure to be caught in the stitching.

TIPS FOR APPLYING BIAS TAPE

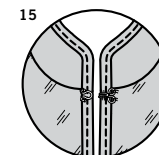
For curves - Pre-shape bias with a steam iron before applying. For an inward curve, stretch double edges and press; for an outward curve, stretch fold edge and press.

For ends - Turn tape ends under to finish an edge or enclose at the seam when possible. When binding completely encloses an edge, arrange to have ends meet at a seam; then turn both ends under where they meet and tack together invisibly after stitching on binding.

For corners - Encase one edge all the way to raw edge of fabric. Raise presser foot and cut the thread. Turn tape around corner and pin in place. Fold tape diagonally on both sides of corner; lower needle into diagonal fold and stitch the remaining side.



14. Slip raw edges of cape between folds of bias tape, placing raw edge against center crease and wider folded edge of tape on INSIDE, working tape around curves and corners, and turning under ends at top of slits. Pin or hand-baste in place. **EDGE STITCH** tape in place from OUTSIDE, being sure to catch in folded edge on INSIDE.



15. On INSIDE, sew hook and eye closure just below neck, as shown.



Congrats!

You've completed your sewing adventure

SHARE YOUR LOOK



Post your pattern and tag us
@simplicity_creative_group and **#simplicitypatterns**
for a chance to be featured on our social media.

Look for more PDF patterns at [simplicity.com](https://www.simplicity.com)

Have a question or need help with your sewing project call us at
1-888-588-2700



Simplicity ©2024 a division of IG Design Group Americas Inc. • Atlanta, GA 30342 USA www.thedesigngroup.com • All Rights Reserved. www.simplicity.com • Made in the U.S.A. Fabriqué aux États-Unis.

To be used for individual private home use only and not for commercial or manufacturing purposes. • A usage privé seulement et non à des fins commerciales ou de production en série. • Para uso privado solamente, no se puede utilizar con propósitos de comercialización o de producción en serie.