

S9943

# Simplicity<sup>®</sup> COSTUMES



Designed and  
printed in USA.



Shop all the pattern brands you love @

**Simplicity<sup>®</sup>.com**

Easy

## MISSES' CORSET COSTUMES

**Suggested Fabrics:** Brocade, Cotton/Cotton Blends, Denim, Lightweight Home Dec Fabric, Twill.  
**Lining:** Cotton/Cotton Blends. **Interfacing:** Medium-weight Fusible.

**Notions: A,B,C,D:** One pkg. of ½" (1.3cm) double fold bias tape, 2½ yds. (2.4m) of ¾" - ¾" (1cm - 2.2cm) ribbon or ¼" (6mm) cord, ½ yd. (0.5m) ¼" (6mm) boning, 5/16" (8mm) two-part grommets: Twelve for A,B,D, Fourteen for C. **Also for A:** Optional contrasting thread.

Sizes	8	10	12	14	16	18	20	22	24	26
European	34	36	38	40	42	44	46	48	50	52

**Interfacing A,B,D** - 20" - 1½ yds. (51cm - 1.3m)

<b>Corset A,B</b>	45"	½	¾	¾	¾	¾	¾	¾	¾	¾	Yd.
	115cm*	0.5	0.5	0.6	0.6	0.6	0.6	0.6	0.7	0.7	m
<b>Lining</b>	45"	½	¾	¾	¾	¾	¾	¾	¾	¾	Yd.
	115cm**	0.5	0.5	0.5	0.6	0.6	0.6	0.6	0.6	0.7	m

<b>Corset C</b>	45"	¾	¾	¾	¾	¾	¾	¾	¾	¾	Yd.
	115cm*	0.6	0.6	0.6	0.6	0.6	0.7	0.7	0.7	0.7	m
<b>Lining</b>	45"	¾	¾	¾	¾	¾	¾	¾	¾	¾	Yd.
	115cm**	0.5	0.6	0.6	0.6	0.6	0.6	0.7	0.7	0.7	m

**Interfacing** 20" - 1½ yds. (51cm - 1.4m)

<b>Corset D</b>	45"	½	½	½	¾	¾	¾	¾	¾	¾	Yd.
	115cm*	0.5	0.5	0.5	0.5	0.6	0.6	0.6	0.6	0.7	m
<b>Lining</b>	45"	½	½	½	¾	¾	¾	¾	¾	¾	Yd.
	115cm**	0.5	0.5	0.5	0.5	0.5	0.6	0.6	0.6	0.6	m

## FINISHED GARMENT MEASUREMENTS (Includes Design and Wearing Ease)

<b>A,B,D Bust</b>	33½	34½	36	38	40	42	44	46	48	50	Ins.
	(85)	(88)	(91)	(97)	(102)	(107)	(112)	(117)	(122)	(127)	(cm)
<b>C Bust</b>	34½	35½	37	39	41	43	45	47	49	51	Ins.
	(88)	(90)	(94)	(99)	(104)	(109)	(114)	(119)	(124)	(130)	(cm)

## Finished back length from base of neck

<b>Corset A,D</b>	12½	13	13½	13½	13½	14	14½	14½	14½	15	Ins.
	(32)	(33)	(34)	(34)	(35)	(36)	(36)	(37)	(37)	(38)	(cm)
<b>Corset B,C</b>	13½	14	14½	14½	14½	15	15½	15½	15½	16	Ins.
	(37)	(36)	(36)	(37)	(37)	(38)	(39)	(39)	(40)	(41)	(cm)

\*with nap \*\*without nap



A



B



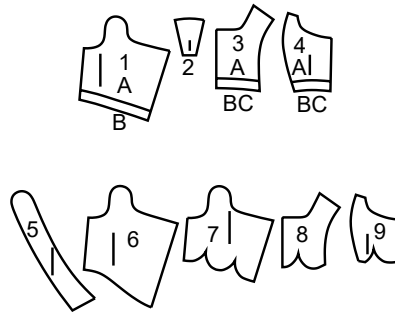
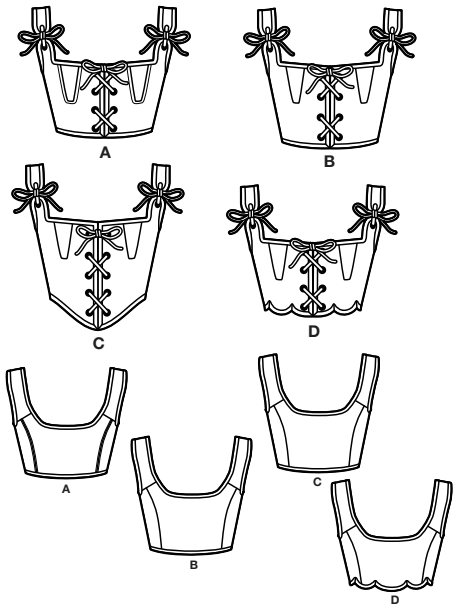
C



D

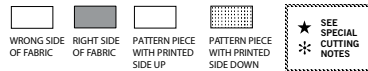
# Simplicity®

Thank you for purchasing this Simplicity pattern.  
We made every effort to provide you with a high quality product.



- 1 Front-A,B  
2 Gusset-A,B,C,D  
3 Back-A,B,C  
4 Side Back-A,B,C  
5 Shoulder Strap-A,B,C,D  
6 Front-C  
7 Front-D  
8 Back-D  
9 Side Back-D

## Cutting Layouts



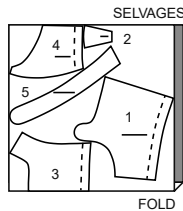
POSITION OF PATTERN PIECES MAY VARY  
SLIGHTLY ACCORDING TO YOUR PATTERN SIZE

**NOTE:** DASHED LINE IN CUTTING LAYOUT IS FOR SHORTER LENGTH

### CORSET A,B

USE PIECES 1 2 3 4 5

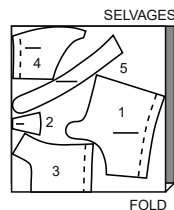
45" (115CM)  
WITH NAP  
ALL SIZES



### LINING A,B

USE PIECES 1 2 3 4 5

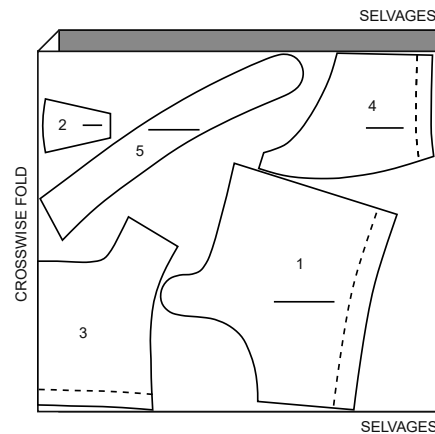
45" (115CM)  
WITHOUT NAP  
ALL SIZES



## FUSIBLE INTERFACING A,B

USE PIECES 1 2 3 4 5

20" (51CM)  
ALL SIZES



www.simplicity.com



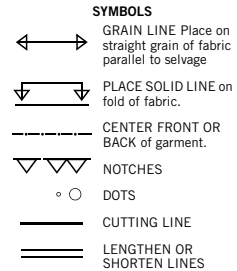
info@simplicity.com



1-888-588-2700

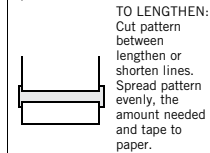
## General Directions

### The Pattern



SEAM ALLOWANCE: 5/8" (1.5cm) unless otherwise stated is included but not printed on MULTI-SIZE PATTERNS. Mark your size with colored felt tip pen. See chart on tissue for how to use MULTI-SIZE PATTERNS.

**ADJUST IF NEEDED**  
Make adjustments before placing pattern on fabric.



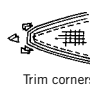
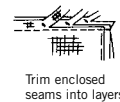
**TO LENGTHEN:**  
Cut pattern between lengthen or shorten lines. Spread pattern evenly, the amount needed and tape to paper.

**TO SHORTEN:**  
At lengthen or shorten lines, make an even pleat taking up amount needed. Tape in place.

When lengthen or shorten lines are not given, make adjustments at lower edge of pattern.

### Sewing

- SEW garment following **Sewing Directions**.
- PIN or machine-baste seams matching notches.
- STITCH 5/8" (1.5 cm) seams unless otherwise stated.
- PRESS seams open unless otherwise indicated clipping when necessary so seams will lie flat.
- TRIM seams to reduce bulk, as shown below.



### Cutting/Marking

**BEFORE CUTTING:**  
PRESS pattern pieces with a warm dry iron. PRE-SHRINK fabric by pre-washing washables or steam-pressing non-washables.

CIRCLE your cutting layout.

PIN pattern to fabric as shown in Cutting Layouts.

• FOR DOUBLE THICKNESS: Fold fabric with RIGHT sides together.

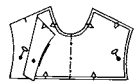
• FOR SINGLE THICKNESS: Place fabric RIGHT side up.

• FOR PILE, SHADED OR ONE WAY DESIGN FABRICS: Use "with nap" layouts

**AFTER CUTTING:**  
Transfer markings to WRONG side of fabric before removing pattern. Use pin and chalk method or dressmaker's tracing paper and wheel.

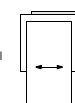
### To Quick Mark:

- Snip edge of fabric to mark notches, ends of fold lines and center lines.
- Pin mark dots.

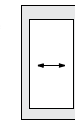


### SPECIAL CUTTING NOTES

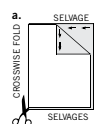
★ If layout shows a piece extending past fold, cut out all pieces except piece that extends.



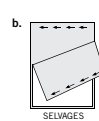
Open out fabric to single thickness. Cut extending piece on RIGHT side of fabric in position shown.



✱ Mark small arrows along both selvages indicating direction of nap or design. Fold fabric crosswise with RIGHT sides together, and cut along fold (a).



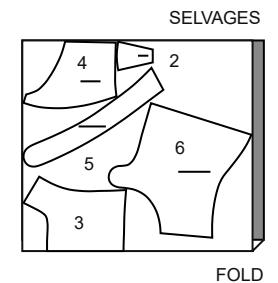
Turn one fabric layer around so arrows on both layers go in the same direction. Place RIGHT sides together (b).



## CORSET C

USE PIECES 2 3 4 5 6

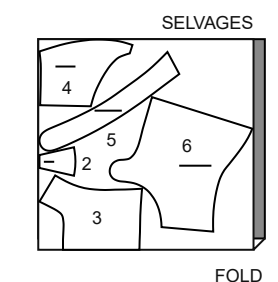
45" (115CM)  
WITH NAP  
ALL SIZES



## LINING C

USE PIECES 2 3 4 5 6

45" (115CM)  
WITHOUT NAP  
ALL SIZES



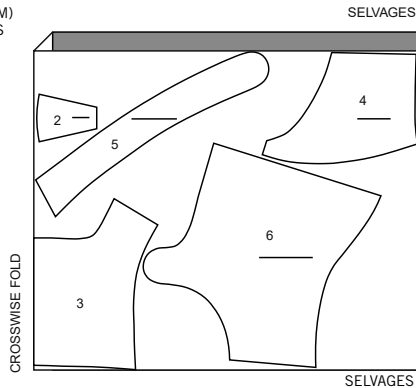
CUTTING LAYOUTS CONTINUED ON PAGE 2

**S9943**

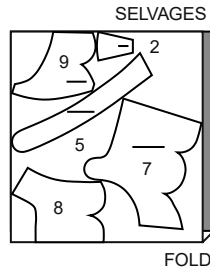
2 of 3

**FUSIBLE INTERFACING C**

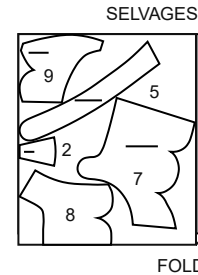
USE PIECES 2 3 4 5 6

20" (51CM)  
ALL SIZES**CORSET D**

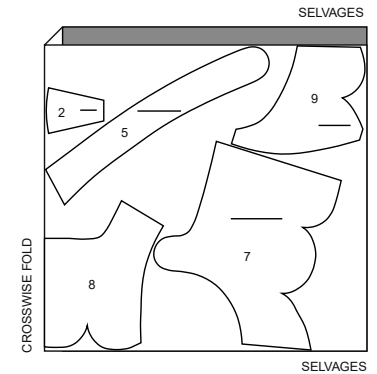
USE PIECES 2 5 7 8 9

45" (115CM)  
WITH NAP  
ALL SIZES**LINING D**

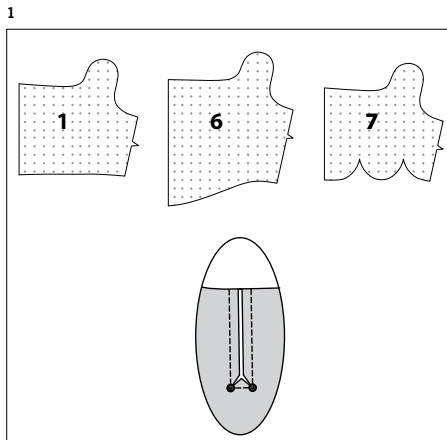
USE PIECES 2 5 7 8 9

45" (115CM)  
WITHOUT NAP  
ALL SIZES**FUSIBLE INTERFACING D**

USE PIECES 2 5 7 8 9

20" (51CM)  
ALL SIZES**SEWING TUTORIALS**

Build your skills viewing short, easy-to-follow videos at  
[simplicity.com/sewingtutorials](https://www.simplicity.com/sewingtutorials)

**Sewing Directions**

Read **General Directions** on page 1 before you begin.

Sewing methods in **BOLD TYPE** have Sewing Tutorial Video available.  
 Scan QR CODE to watch videos:

**REINFORCE** - see how to reinforce video.

**STAYSTITCH** - see how to do stay-stitching video.

**TOPSTITCH** - see how to topstitch video.

**SLIPSTITCH** - Slide needle through a folded edge, then pick up a thread of underneath fabric.

**DOUBLE FOLD BIAS TAPE** - Slip corset/strap between the folds of the bias tape placing the raw edge against the center crease and the wider folded edge of the tape on the **INSIDE**. Pin tape in place. **SLIPSTITCH** the tape in place on the **OUTSIDE** and **INSIDE**, making sure to keep the stitches invisible on the **OUTSIDE**.

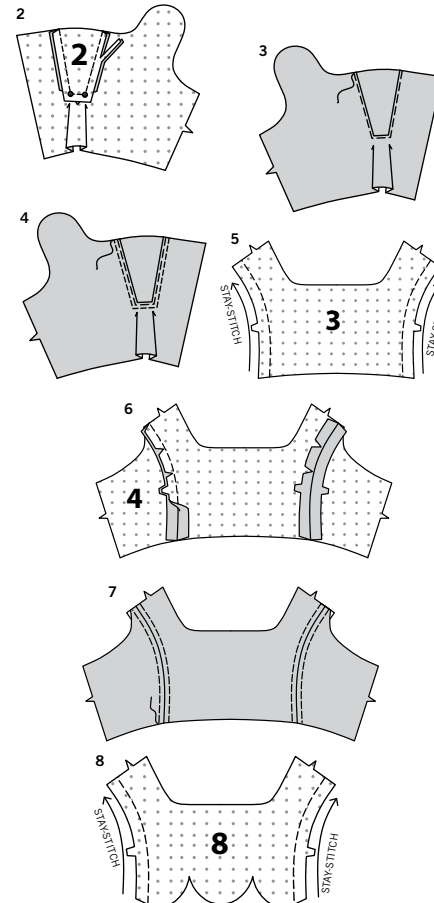
To finish an end- Turn tape ends under to finish.

**CORSET A, B, C, D**

**NOTE:** View A will be illustrated, unless otherwise indicated.

**FRONT AND BACK**

1. Apply **INTERFACING** to front (1, 6 or 7).  
**REINFORCE** front along stitching lines, pivoting at small dots.  
 Slash along solid line, clipping diagonally to small dots.



2. Apply **INTERFACING** to gusset (2). With **RIGHT** sides together, pin gusset to front, matching small dots, placing seamline along stitching on front. Stitch in a 3/8" (1cm) seam, pivoting at small dots. Trim seam allowances. Press seam toward front.

3. **EDGESTITCH** gusset seam.

**FOR VIEW A**

4. **OPTIONAL: TOPSTITCH** gusset seam using contrasting thread, as shown.

**FOR VIEWS A, B, C**

5. Apply **INTERFACING** to back (3).  
**STAYSTITCH** side edges of back in direction of arrows.

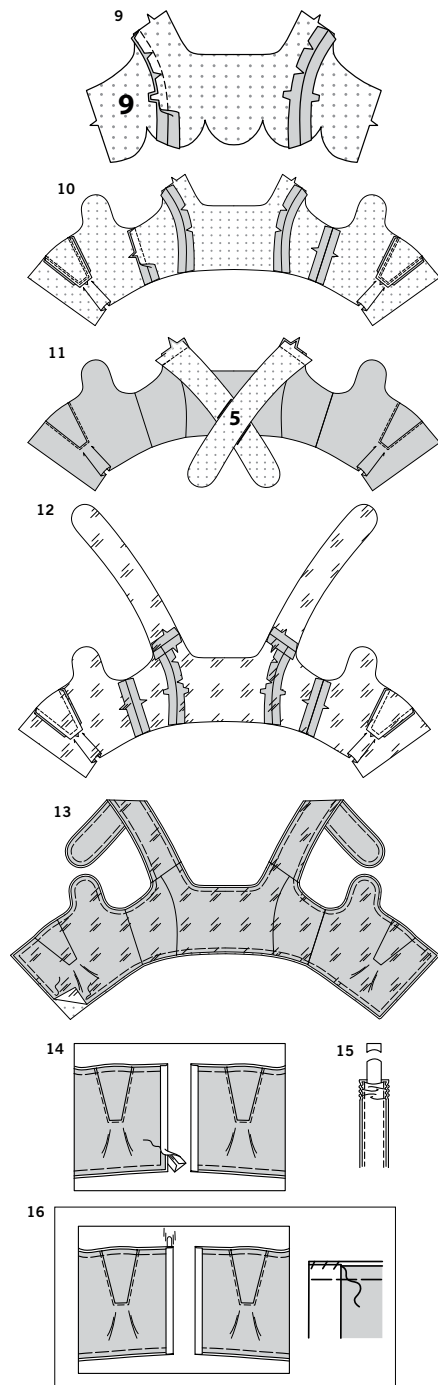
6. Apply **INTERFACING** to side back (4).  
 With **RIGHT** sides together, pin side back to side edges of back, matching notches, clipping back where necessary. Baste. Stitch.

**FOR VIEW A**

7. **OPTIONAL: TOPSTITCH** side back seams on each side using contrasting thread, as shown.

**FOR VIEW D**

8. Apply **INTERFACING** to back (8).  
**STAYSTITCH** side edges of back in direction of arrows.



9. Apply **INTERFACING** to side back (9). With **RIGHT** sides together, pin side back to side edges of back, matching notches, clipping back where necessary. Baste. Stitch.

#### CONTINUE AS FOLLOWS FOR ALL VIEWS

10. Stitch fronts to back at sides.

11. Apply **INTERFACING** to shoulder strap (5). Stitch shoulder straps to upper edges of back, matching notches.

#### LINING AND FINISHING

12. Stitch lining together in same manner as front and back.

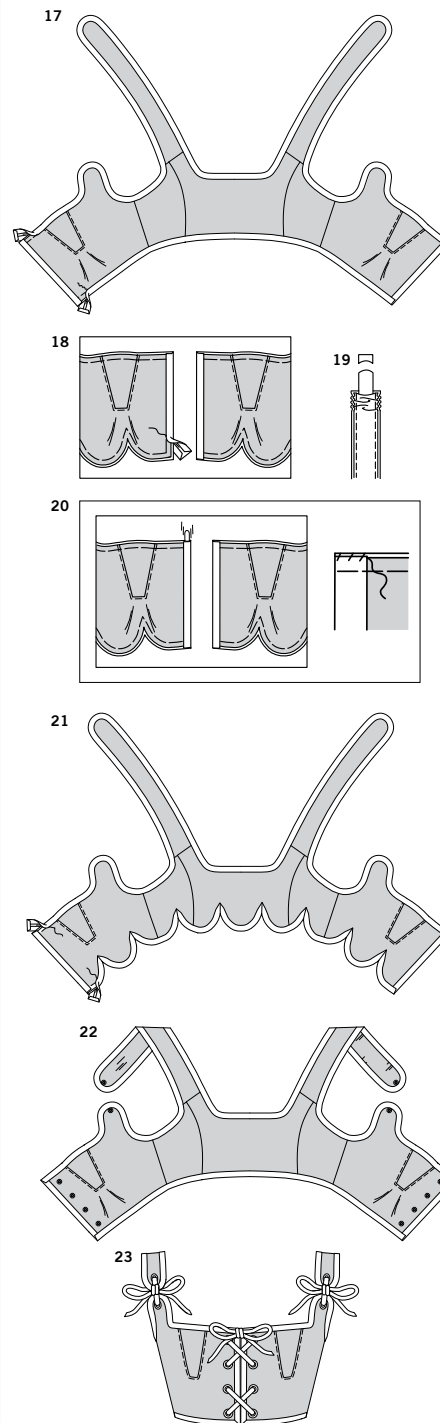
13. With **WRONG** sides together, pin lining to corset, matching centers and seams, having raw edges even. Baste raw edges together.

#### FOR VIEWS A, B, C

14. Apply **DOUBLE FOLD BIAS TAPE** to front edge, leaving upper end open to insert boning.

15. Cut two pieces of boning the length of front edge. Remove boning from casing. Trim away 1/4" (6mm) from each end of boning, curving ends, as shown.

16. Insert boning into bias tape opening. **SLIPSTITCH** opening.



17. Apply **DOUBLE FOLD BIAS TAPE** to upper and strap edges, shaping the edges around the curves, folding in fullness at corners. Apply **DOUBLE FOLD BIAS TAPE** to lower edge.

#### FOR VIEW D

18. Apply **DOUBLE FOLD BIAS TAPE** to front edge, leaving upper end open to insert boning.

19. Cut two pieces of boning the length of front edge. Remove boning from casing. Trim away 1/4" (6mm) from each end of boning, curving ends, as shown.

20. Insert boning into bias tape opening. **SLIPSTITCH** opening.

21. Apply **DOUBLE FOLD BIAS TAPE** to upper and strap edges, shaping the edges around the curves, folding in fullness at corners. Apply **DOUBLE FOLD BIAS TAPE** to lower edge, shaping the edges around the curves, diagonally folding in fullness at scalloped edges.

#### CONTINUE AS FOLLOWS FOR ALL VIEWS

22. Apply grommets to front and straps at small dots, following manufacturer's directions.

23. Cut two pieces of ribbon each approximately 22" (56cm) long for shoulder ties. Insert ties through grommets at upper front and straps. Tie into bows. Cut ribbon approximately 46" (117cm) long for front lacing. Starting at lower edge in front, lace ribbon through grommets. Tie ribbon into bows. Trim diagonally across ends of ribbons.



# Congrats!

You've completed your sewing adventure

---

## SHARE YOUR LOOK



Post your pattern and tag us  
**@simplicity\_creative\_group** and **#simplicitypatterns**  
for a chance to be featured on our social media.

Look for more PDF patterns at [simplicity.com](https://www.simplicity.com)

Have a question or need help with your sewing project call us at  
1-888-588-2700



Simplicity ©2024 a division of IG Design Group Americas Inc. • Atlanta, GA 30342 USA [www.thedesigngroup.com](https://www.thedesigngroup.com) • All Rights Reserved. [www.simplicity.com](https://www.simplicity.com) • Made in the U.S.A. Fabriqué aux États-Unis.

To be used for individual private home use only and not for commercial or manufacturing purposes. • A usage privé seulement et non à des fins commerciales ou de production en série. • Para uso privado solamente, no se puede utilizar con propósitos de comercialización o de producción en serie.