

S9942

Simplicity[®]



Designed and printed in USA. **easy-to-sew**

Shop all the pattern brands you love @

Simplicity[®].com

Easy

KITCHEN ACCESSORIES

Suggested Fabrics: Cotton Types, Jelly Rolls, Linen Types, Quilting Cottons. **Contrast B (Mitt Palm)** in Pre-Quilted Heat Resistant Fabric. **Batting B,D:** Insulated Batting. **Batting C:** Cotton Batting. **Batting E:** Bonded Foam Stabilizer. **Lining B,C,D,E:** Cotton Broadcloth.

DISCLAIMER: TORTILLA WARMER C AND LOAF PAN COZY D ARE NOT INTENDED FOR MICROWAVE OR OVEN USE. IF YOU WISH TO USE THESE ITEMS IN THE MICROWAVE OR OVEN, PLEASE USE 100% COTTON MATERIALS ONLY (INCLUDING THREAD).

Notions: A,B,C,E: One pkg. of 1/2" (1.3cm) double fold bias tape. **Also for A:** Two 1" (2.5cm) D-Rings. **D:** One pkg. of 1/4" (6mm) double fold bias tape, four 5/8" (1.5cm) buttons.

Apron A

One Jelly Roll
45** - 1 yd. (115cm* - 0.9m)

Contrast (Trapezoids, Strap, Tab, Tie Ends): 45** - 1 1/2 yds. (115cm* - 1.3m)

Oven Mitt B

One Jelly Roll
Contrast 1 (Mitt Palm): 45** - 3/4 yd. (115cm* - 0.3m)

Contrast 2 (Trapezoids) - 4" x 12" (10cm x 28cm) remnant

Lining: 45*** - 1/2 yd. (115cm** - 0.5m)

Batting: 45* - 1/2 yd. (115cm - 0.5m)

Tortilla Warmer C

One Jelly Roll
Contrast (Trapezoids) - 4" x 9" (10cm x 21cm) remnant

Lining: 45*** - 1/2 yd. (115cm** - 0.5m)

Batting: 45* - 1/2 yd. (115cm - 0.5m)

Loaf Pan Cozy D

One Jelly Roll
Contrast (Trapezoids) - 4" x 9" (10cm x 21cm) remnant

Lining: 45*** - 3/4 yd. (115cm** - 0.3m)

Batting: 45* - 1/2 yd. (115cm - 0.5m)

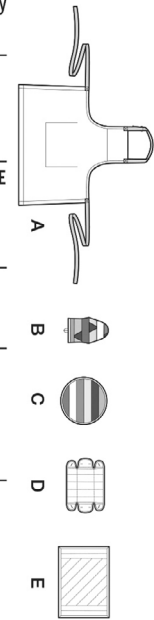
Place Mat E

One Jelly Roll
Contrast (Trapezoids) - 4" x 9" (10cm x 21cm) remnant

Lining: 45*** - 1/2 yd. (115cm** - 0.5m)

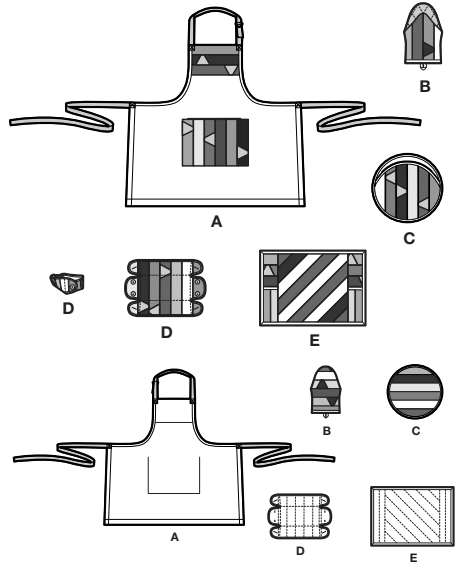
Batting: 60* - 1/2 yd. (150cm - 0.5m)

*with nap **without nap

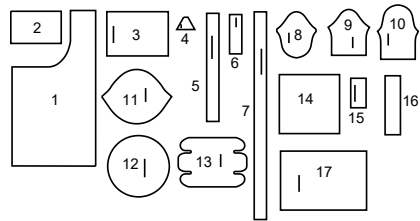


Simplicity® S9942

Thank you for purchasing this Simplicity pattern. We made every effort to provide you with a high quality product.

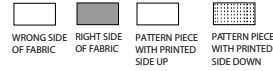


17 PIECES



- 1 Apron-A
- 2 Guide for Upper Front-A
- 3 Pocket Facing-A
- 4 Trapezoid-A, B, C, D, E
- 5 Strap-A
- 6 Tab-A
- 7 Tie Ends-A
- 8 Mitt Palm-B
- 9 Mitt Front-B
- 10 Mitt Back-B
- 11 Top-C
- 12 Bottom-C
- 13 Cozy-D
- 14 Guide for Center-E
- 15 Pocket Facing-E
- 16 Guide for Side-E
- 17 Place Mat-E

Cutting Layouts



POSITION OF PATTERN PIECES MAY VARY SLIGHTLY ACCORDING TO YOUR PATTERN SIZE

General Directions For Cutting

PRE-SHRINK and iron all fabric.

FOR DOUBLE THICKNESS -Fold fabric with **RIGHT** sides together. Pin pattern to **WRONG** side of fabric.

FOR SINGLE THICKNESS -Pin pattern to **RIGHT** side of fabric.

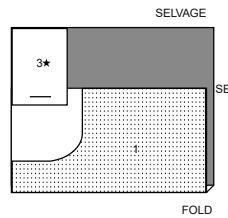
★ If layout shows a piece extending past fold, cut out all pieces except piece that extends. Open out fabric to single thickness. Cut extending piece on **RIGHT** side of fabric in position shown.

✱ Mark small arrows along both selvages in dictating direction of nap or design. Fold fabric crosswise with **RIGHT** sides together, and cut along fold. Turn one fabric layer around so arrows on both layers go in the same direction. Place **RIGHT** sides together.

APRON A

USE PIECES 1 3

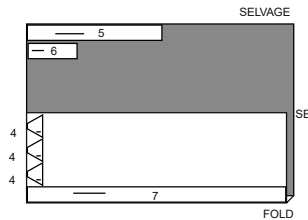
45" (115CM) WITH NAP



CONTRAST A (Tie and Trapezoids)

USE PIECES 4 5 6 7

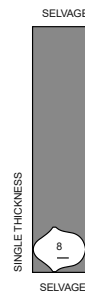
45" (115CM) WITH NAP



CONTRAST 1B (Mitt Palm)

USE PIECE 8

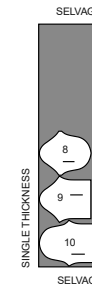
45" (115CM) WITH NAP



LINING B

USE PIECES 8 9 10

45" (115CM) WITH NAP



BATTING B

USE PIECES 9 10

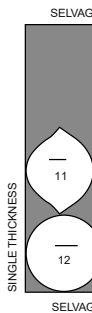
45" (115CM) WITH NAP



LINING C AND BATTING C

USE PIECES 11 12

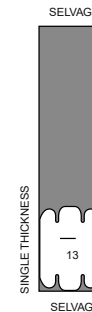
45" (115CM) WITH NAP



LINING D AND BATTING D

USE PIECE 13

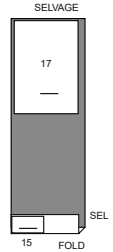
45" (115CM) WITH NAP



LINING E

USE PIECES 15 17

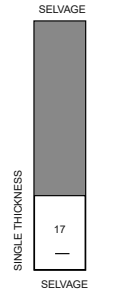
45" (115CM) WITH NAP



BATTING E

USE PIECE 17

60" (150CM) WITH NAP



Sewing Directions



Read **General Directions** before you begin.

Sewing methods in **BOLD TYPE** have Sewing Tutorial Video available. Scan **QR CODE** to watch videos:

EDGESTITCH – see **Machine Stitches: "how to sew an edgestitch"** video.

SLIPSTITCH – see **Hand Stitching: "how to slip stitch"** video.

STITCH IN THE DITCH – see **Machine Stitches: "how to stitch in the ditch"** video.

TRIM SEAM – see **Seams: "how to trim, clip and layer seams"** video.

SEWING TUTORIALS



Build your skills viewing short, easy-to-follow videos at simplicity.com/sewingtutorials

PATTERN PIECES WILL BE IDENTIFIED BY NUMBERS THE FIRST TIME THEY ARE USED.

STITCH 1/4" (6MM) SEAMS WITH RIGHT SIDES TOGETHER UNLESS OTHERWISE STATED.

GENERAL DIRECTIONS FOR APPLYING DOUBLE FOLD BIAS TAPE

Double fold bias tape comes with one side slightly wider than the other. The wider side is used on the **INSIDE** so that when the tape is stitched in place from the **OUTSIDE**, both edges are caught in the stitching.

(A) To encase an edge, slip it between the folds of the bias tape placing the raw edge against the center crease and the wider folded edge of the tape on the **INSIDE** of the project. Stitch the tape in place from the **OUTSIDE**, being sure to catch in the folded edge on the **INSIDE**.

(B) Pre-shape bias for outward curves by stretching the single folded edge and pressing. For an inward curve, stretch the double edges and press.

(C) When tape completely encloses an edge, arrange to have ends meet at a seam; then turn both ends under where they meet and tack together invisibly after stitching on tape.

(D) At corners, encase one edge all the way to raw edge of fabric. Raise presser foot and cut the thread. Turn tape around corner and pin in place. Fold tape diagonally on both sides of corner; lower needle into diagonal fold and stitch the remaining side.

APRON A

NOTE: Fabric jelly rolls are 2-1/2" (6.3cm) wide. Jelly rolls are stitched together in 1/4" (6mm) seams. 2" (5cm) wide finished sections.

1. Using **GUIDE FOR UPPER FRONT** (2), cut three sections of jelly roll the horizontal length of the guide 10-1/4" (25.5cm), and stitch together in 1/4" (6mm) seams.

2. Press under seam allowance on two **TRAPEZOID** (4) sections, folding out fullness at corners. Pin trapezoids to upper front, as shown, or as desired. **EDGESTITCH** in place.

3. Press under seam allowance on lower edge of upper front. Pin right side of upper front to wrong side of **APRON** (1) at upper edge. Stitch. **TRIM SEAM**.

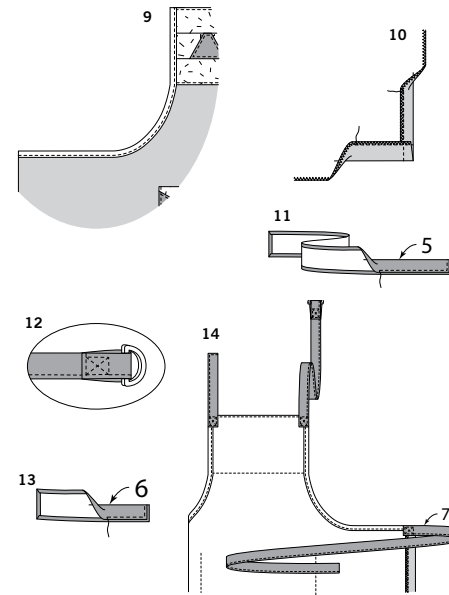
4. Turn upper front to outside; press. **EDGESTITCH** upper edge of apron and **EDGESTITCH** lower edge in place. Baste raw edges together.

5. To make pocket, using **POCKET FACING** (3) as a guide, cut six sections of jelly roll the vertical length of the guide 9" (23cm), and stitch together in 1/4" (6mm) seams.

6. Press under seam allowance on three trapezoid sections, folding out fullness at corners. Pin trapezoids to pocket, as shown, or as desired. **EDGESTITCH** in place.

7. With right sides together and raw edges even, pin pocket to pocket facing. Stitch, leaving an opening on one side edge for turning. **TRIM SEAM**.

8. Turn pocket; press. **SLIPSTITCH** opening closed. On outside, pin pocket to apron along placement line with upper corners at large dots. **EDGESTITCH** side and lower edges.



9. Apply double fold bias tape to underarm edges of apron. See "General Directions for Applying Double Fold Bias Tape" above.

10. Finish side edges of apron with a zigzag or overlock stitch, press under 1" (2.5cm) hem allowance, and stitch 1/4" (1mm) from finished edge.

OR, press under 1" (2.5cm) hem allowance on side edges of apron. Turn under raw edge 1/4" (6mm); press. **EDGESTITCH** inner pressed edge.

Hem lower edge of apron in the same manner, pressing up a 1-1/2" (3.8cm) hem allowance.

11. Fold under seam allowance on ends and long edges of Strap (5). Fold strap in half, lengthwise. **EDGESTITCH** close to long double edge and ends.

12. Slip strap through two "D" rings. Fold strap to inside along foldline and bring rings to fold. Stitch in place along stitching lines.

13. Fold under seam allowance on ends and long edges of TAB (6). Fold tab in half, lengthwise. **EDGESTITCH** close to long double edge and ends.

14. On inside, pin free end of strap to upper right corner of apron and one end of tab to upper left corner of apron, lapping 1-1/8" (2.8cm) over upper edge. Stitch in place along stitching lines.

Make two **TIE ENDS** (7) in the same manner as tab. On inside, pin one end of tie to each side edge of apron, lapping 1-1/8" (2.8cm) over edge. Stitch in place along stitching lines.

OVEN MITT B

NOTE: Fabric jelly rolls are 2-1/2" (6.3cm) wide. Jelly rolls are stitched together in 1/4" (6mm) seams. 2" (5cm) wide finished sections.

1. Pin **MITT PALM** (8) to lining. Baste close to raw edges. Stitch over existing quilt lines through all thicknesses. Pin insulated batting to wrong side of **MITT FRONT** (9) lining and **MITT BACK** (10) lining. Baste close to raw edges.

2. To make mitt front, cut two sections of jelly roll 9-1/2" (24.5cm) long, and stitch together in a 1/4" (6mm) seam. Cut two more sections of jelly roll 8-1/4" (21cm) long, and stitch to each side of first group, having lower edges even.

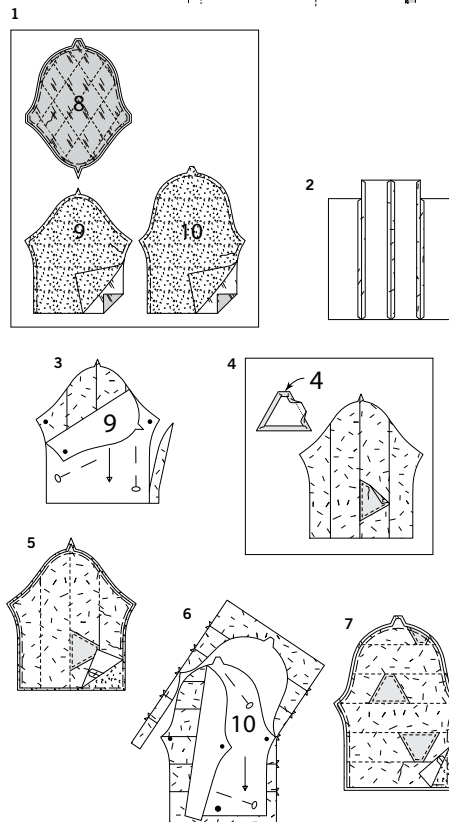
3. Pin pattern tissue for **MITT FRONT** (9) to seamed mitt front section, having lower edge of pattern piece aligned with lower edge of fabric. Cut piece out and transfer markings.

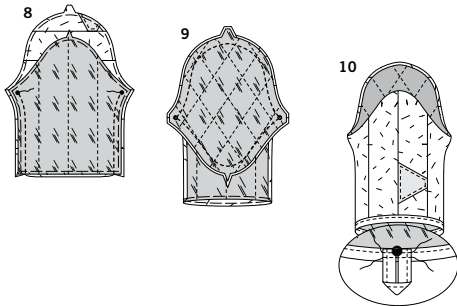
4. Press under seam allowance on one **TRAPEZOID** (4) section, folding out fullness at corners. Pin trapezoid to mitt front, as shown, or as desired. **EDGESTITCH** in place.

5. Pin mitt front to mitt front lining with wrong sides together and raw edges even. Baste close to raw edge. On outside, **STITCH IN THE DITCH** of vertical seams through all thicknesses.

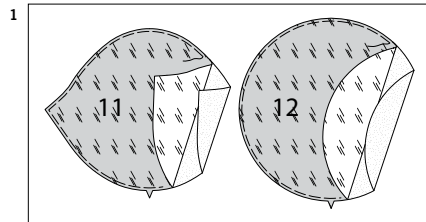
6. To make mitt back, cut six sections of jelly roll 8-1/2" (21.5cm) long, and stitch together in 1/4" (6mm) seams. Pin pattern tissue for **MITT BACK** (10) to seamed mitt back section, having lower edge of fabric extend 1/2" (1.3cm) below lower edge of tissue. Cut piece out and transfer markings.

7. Apply three trapezoids, baste fabric section to lining section and stitch in the ditch of the seams, in the same manner as for mitt front.





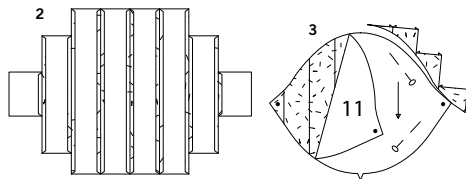
8. With right sides together, pin mitt front to mitt back at side edges. Stitch in a 1/2" (1.3cm) seam from lower edge to small dot, back-stitching at dot to reinforce the seam. **TRIM SEAM.**
9. With right sides together and raw edges even, pin mitt palm to mitt, matching small dots and notches. Stitch in a 1/2" (1.3cm) seam. **TRIM SEAM.**
10. Apply double fold bias tape to lower edge of oven mitt. See "General Directions for Applying Double Fold Bias Tape" above. To make a loop for hanging, cut a piece of double fold bias tape 4" (10cm) long. Stitch close to double edge. Fold tape in half, bringing ends together. On inside, pin loop to mitt at large dot. Stitch ends in place, securely.



TORTILLA WARMER C

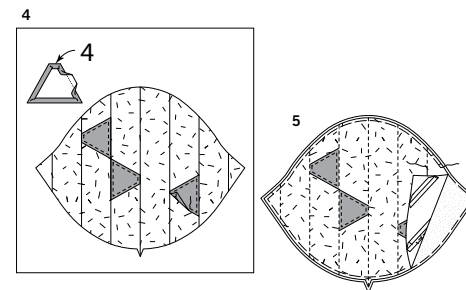
NOTE: Fabric jelly rolls are 2-1/2" (6.3cm) wide. Jelly rolls are stitched together in 1/4" (6mm) seams. 2" (5cm) wide finished sections.

1. Pin batting to wrong side of TOP (11) lining and BOTTOM (12) lining. Baste close to raw edges.



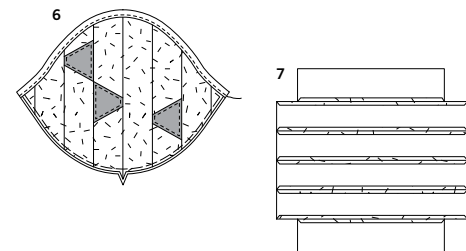
2. To make top, cut four sections of jelly roll 11-1/4" (28.7cm) long, and stitch together in 1/4" (6mm) seams. Cut two sections of jelly roll 8" (20.5cm) long, and two additional sections 3" (7.5cm) long, and stitch one of each to each side of first group in a 1/4" (6mm) seam.

3. Pin pattern tissue for TOP (11) to seamed top section, matching centers. Cut piece out and transfer markings.



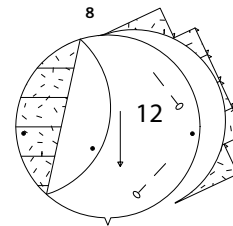
4. Press under seam allowance on three TRAPEZOID (4) sections, folding out fullness at corners. Pin trapezoids to top, as shown, or as desired. **EDGE STITCH** in place.

5. Pin top centered to top lining with wrong sides together. Baste close to raw edge of lining. On outside, **STITCH IN THE DITCH** of vertical seams through all thicknesses.

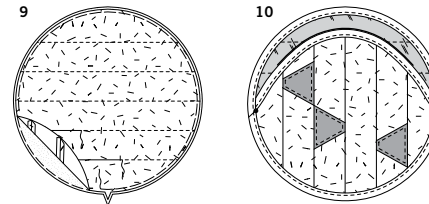


6. Apply double fold bias tape to unnotched edge of top. See "General Directions for Applying Double Fold Bias Tape" above.

7. To make bottom, cut four sections of jelly roll 13" (33cm) long, and stitch together in 1/4" (6mm) seams. Cut two sections of jelly roll 10" (26cm) long, and stitch one of each to each side of first group in a 1/4" (6mm) seam.



8. Pin pattern tissue for BOTTOM (12) to seamed bottom section. Cut piece out and transfer markings.

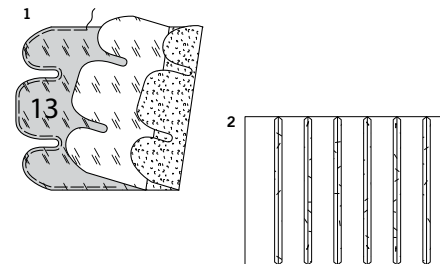


9. Pin bottom centered to bottom lining with wrong sides together. Baste close to raw edge of lining. On outside, **STITCH IN THE DITCH** of horizontal seams through all thicknesses.

10. Pin top to bottom with wrong sides together, matching small dots and notches. Baste raw edges together. Apply double fold bias tape to outer edge of bottom through all thicknesses. See "General Directions for Applying Double Fold Bias Tape" above.

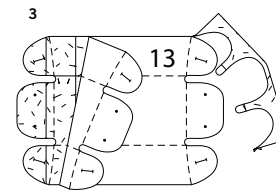
LOAF PAN COZY D

NOTE: Fabric jelly rolls are 2-1/2" (6.3cm) wide. Jelly rolls are stitched together in 1/4" (6mm) seams. 2" (5cm) wide finished sections.

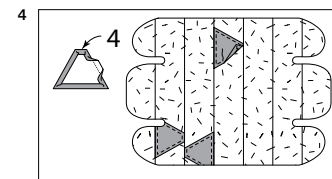


1. Pin insulated batting to wrong side of COZY (13) lining. Baste close to raw edges.

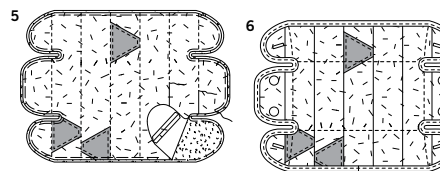
2. To make cozy, cut seven sections of jelly roll 10" (26cm) long, and stitch together in 1/4" (6mm) seams.



3. Pin pattern tissue for COZY (13) to seamed cozy section, matching centers. Cut piece out and transfer markings.



4. Press under seam allowance on three TRAPEZOID (4) sections, folding out fullness at corners. Pin trapezoids to cozy, as shown, or as desired. **EDGE STITCH** in place.



5. Pin cozy centered to cozy lining with wrong sides together. Baste close to raw edge of lining. On outside, **STITCH IN THE DITCH** of vertical seams through all thicknesses.

6. Stitch along stitching lines. Apply double fold bias tape to outer edge of cozy through all thicknesses. See "General Directions for Applying Double Fold Bias Tape" above. On outside, make buttonholes at markings. Sew buttons to small dots.

PLACE MAT E

NOTE: Fabric jelly rolls are 2-1/2" (6.3cm) wide. Jelly rolls are stitched together in 1/4" (6mm) seams. 2" (5cm) wide finished sections.

1. Pin bonded foam stabilizer to wrong side of PLACE MAT (17) lining. Baste close to raw edges.

2. Cut one section of jelly roll 17 1/2" (44.5cm) long, two sections 15-1/2" (38.5cm) long, two sections 11-1/2" (29.3cm) long, two sections 8" (20.5cm), and two sections 4" (10cm). Using the GUIDE FOR CENTER (14), layout longest strip at forty-five degrees, and place additional strips from longest to shortest each side of center. Stitch together in 1/4" (6mm) seams.

3. Pin pattern tissue for GUIDE FOR CENTER (14), to seamed placemat center section, matching centers. Cut piece out and transfer markings.

4. Cut two sections of jelly roll 12" (31cm) long for each side of place mat. Stitch together in a 1/4" (6mm) seam.

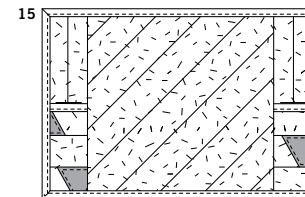
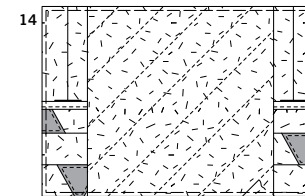
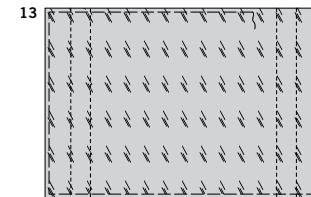
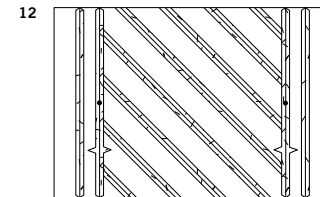
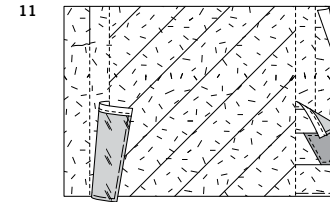
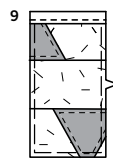
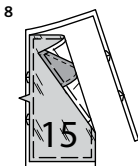
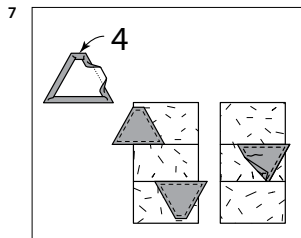
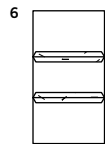
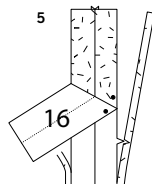
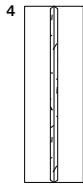
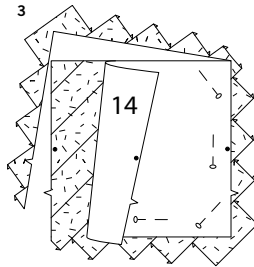
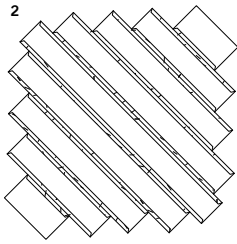
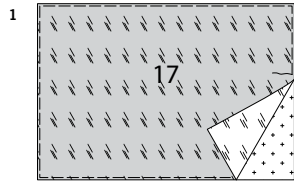
5. Using the GUIDE FOR SIDE (16), layout stitched side section, placing stitching along placement line. Trim sides even with the guide and transfer markings.

6. To make pocket, cut three sections of jelly roll 3-1/2" (9cm) long for each pocket. Stitch together in a 1/4" (6mm) seam.

7. Press under seam allowance on three TRAPEZOID (4) sections, folding out fullness at corners. Pin trapezoids to pockets, as shown, or as desired. **EDGE STITCH** in place.

8. With wrong sides together, pin pocket centered to POCKET FACING (15). Baste close to raw edge of pocket facing. Trim pocket even with facing.

9. Apply double fold bias tape to upper edge of pocket through all thicknesses. See "General Directions for Applying Double Fold Bias Tape" above.



10. Pin wrong sides of pockets to right side of side sections, matching notches, placing upper edge at small dot. Baste along notched edge.

11. Pin side sections to center, matching small dots and notches. Stitch.

12. Pin placemat to placemat lining with wrong sides together, keeping pocket loose on outer and lower edges. **STITCH IN THE DITCH** of the vertical seamlines.

13. Press pocket back in place. Baste raw edges of place mat to lining close to raw edge.

14. On outside, **STITCH IN THE DITCH** of diagonal seamlines, or if you prefer, stitch over the diagonal seamlines using a 3/16" (4.5cm) wide zigzag stitch or a wide decorative stitch on your machine.

15. Apply double fold bias tape to outer edge of place mat through all thicknesses. See "General Directions for Applying Double Fold Bias Tape" above.



Congrats!

You've completed your sewing adventure

**SHARE
YOUR** LOOK



Post your pattern and tag us
@simplicity_creative_group and **#simplicitypatterns**
for a chance to be featured on our social media.

Look for more PDF patterns at [simplicity.com](https://www.simplicity.com)

Have a question or need help with your sewing project call us at
1-888-588-2700



Simplicity ©2024 a division of IG Design Group Americas Inc. • Atlanta, GA 30342 USA www.thedesigngroup.com • All Rights Reserved. www.simplicity.com • Made in the U.S.A. Fabriqué aux États-Unis.

To be used for individual private home use only and not for commercial or manufacturing purposes. • A usage privé seulement et non à des fins commerciales ou de production en série. • Para uso privado solamente, no se puede utilizar con propósitos de comercialización o de producción en serie.