

S9941

Simplicity[®]



Shop all the pattern brands you love @

Simplicity[®].com

Average

PLUSH BEARS AND BUNNIES IN THREE SIZES

Suggested Fabrics: Corduroy, Cotton Types, Flannel, Fleece, Minky Fleece. **Contrast** also in Brocade, Satin. **Interfacing:** Lightweight Fusible.

Notions: A,B,C,D,E,F: Poly fiberfill, two ¾" (2cm) round magnets, pair of false eyelashes (opt.), fabric glue. **Also for A,B:** Two 24mm safety eyes, one 16mm safety nose. **Also for C,D:** Two 20mm safety eyes, one 12mm safety nose. **Also for E,F:** Two 16mm safety eyes, one 8mm safety nose.

Bear A

45"* - ¾ yd. (115cm* - 0.6m)
Contrast (Belly, Inner Ears and Paws)
Appliqués: 9" x 9" (23cm x 23cm) in each of fabric and paper-backed fusible web remnants
Interfacing: 20" - 1½ yds. (51cm - 1.1m)

Bunny B

45"* - 1¼ yds. (115cm* - 1.1m)
Contrast (Inner Ears and Paws)
Appliqués: 12" x 14" (30cm x 36cm) in each of fabric and paper-backed fusible web remnants
Interfacing: 20" - 1½ yds. (51cm - 1.4m)

Bear C

45"* - ½ yd. (115cm* - 0.5m)
Contrast (Belly, Inner Ears and Paws)
Appliqués: 7" x 7" (18cm x 18cm) in each of fabric and paper-backed fusible web remnants
Interfacing: 20" - ¾ yd. (51cm - 0.8m)

Bunny D

45"* - ¾ yd. (115cm* - 0.6m)
Contrast (Inner Ears and Paws)
Appliqués: 9" x 11" (23cm x 28cm) in each of fabric and paper-backed fusible web remnants
Interfacing: 20" - 1 yd. (51cm - 1.0m)

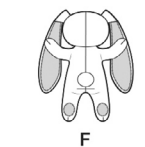
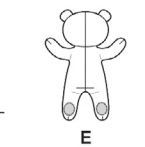
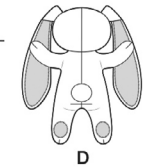
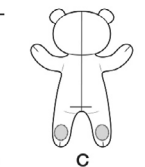
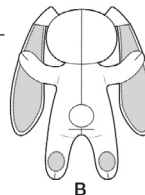
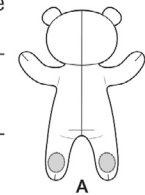
Bear E

45"* - ¾ yd. (115cm* - 0.4m)
Contrast (Belly, Inner Ears and Paws)
Appliqués: 5" x 5" (13cm x 13cm) in each of fabric and paper-backed fusible web remnants
Interfacing: 20" - ½ yd. (51cm - 0.5m)

Bunny F

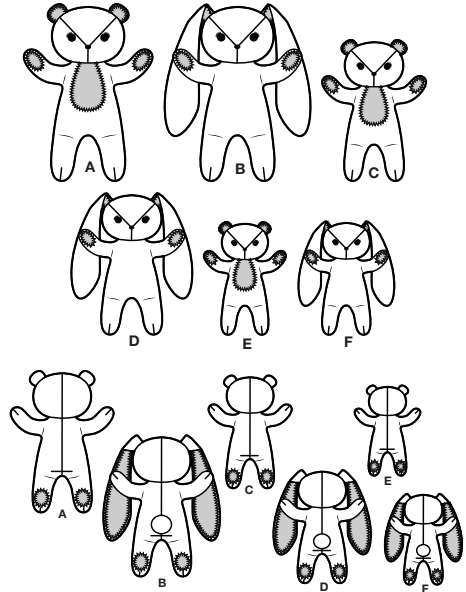
45"* - ¾ yd. (115cm* - 0.4m)
Contrast (Inner Ears and Paws)
Appliqués: 7" x 8" (18cm x 20cm) in each of fabric and paper-backed fusible web remnants
Interfacing: 20" - ¾ yd. (51cm - 0.6m)

*with nap **without nap

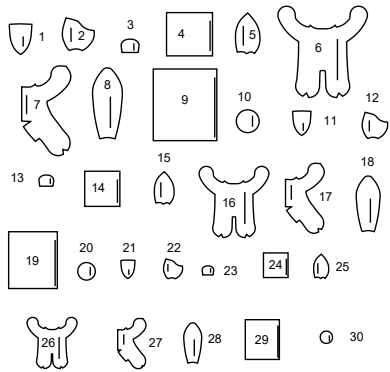


Simplicity® S9941

Thank you for purchasing this Simplicity pattern. We made every effort to provide you with a high quality product.

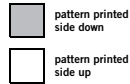


30 PIECES



- | | |
|--|--|
| 1 HEAD FRONT - A,B | 16 FRONT - C,D |
| 2 HEAD SIDE - A,B | 17 BACK - C,D |
| 3 EAR - A | 18 EAR - D |
| 4 BELLY, INNER EARS AND PAWS APPLIQUE - A | 19 INNER EARS AND PAWS APPLIQUE - D |
| 5 HEAD BACK - A,B | 20 TAIL - D |
| 6 FRONT - A,B | 21 HEAD FRONT - E,F |
| 7 BACK - A,B | 22 HEAD SIDE - E,F |
| 8 EAR - B | 23 EAR - E |
| 9 INNER EARS AND PAWS APPLIQUE - B | 24 BELLY, INNER EARS AND PAWS APPLIQUE - E |
| 10 TAIL - B | 25 HEAD BACK - E,F |
| 11 HEAD FRONT - C,D | 26 FRONT - E,F |
| 12 HEAD SIDE - C,D | 27 BACK - E,F |
| 13 EAR - C | 28 EAR - F |
| 14 BELLY, INNER EARS AND PAWS APPLIQUE - C | 29 INNER EARS AND PAWS APPLIQUE - F |
| 15 HEAD BACK - C,D | 30 TAIL - F |

Cutting Layouts



POSITION OF PATTERN PIECES MAY VARY SLIGHTLY ACCORDING TO YOUR PATTERN SIZE

General Directions For Cutting

PRE-SHRINK and iron all fabric.
FOR DOUBLE THICKNESS -Fold fabric with RIGHT sides together. Pin pattern to WRONG side of fabric.

FOR SINGLE THICKNESS -Pin pattern to RIGHT side of fabric.

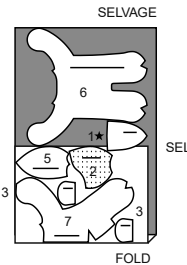
★ If layout shows a piece extending past fold, cut out all pieces except piece that extends. Open out fabric to single thickness. Cut extending piece on RIGHT side of fabric in position shown.

✱ Mark small arrows along both selvages in dicing direction of nap or design. Fold fabric crosswise with RIGHT sides together, and cut along fold. Turn one fabric layer around so arrows on both layers go in the same direction. Place RIGHT sides together.

BEAR A

USE PIECES 1 2 3 5 6 7

45" (115CM)
WITH NAP

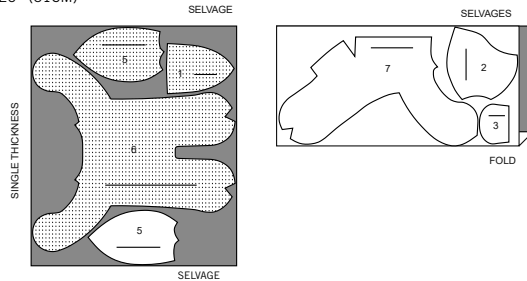


CONTRAST (BELLY, INNER EARS AND PAWS APPLIQUES)
 CUT ONE OF PIECE 4 EACH OF FABRIC AND PAPER BACKED FUSIBLE WEB REMNANTS.

INTERFACING

USE PIECES 1 2 3 5 6 7

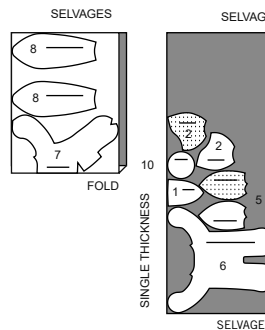
20" (51CM)



BUNNY B

USE PIECES 1 2 5 6 7 8 10

45" (115CM)
WITH NAP



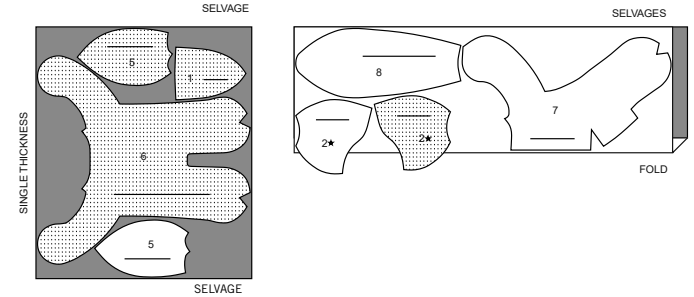
CONTRAST (INNER EARS AND PAWS APPLIQUES)

CUT ONE OF PIECE 9 EACH OF FABRIC AND PAPER BACKED FUSIBLE WEB REMNANTS.

INTERFACING

USE PIECES 1 2 5 6 7 8

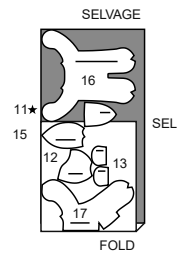
20" (51CM)



BEAR C

USE PIECES 11 12 13 15 16 17

45" (115CM)
WITH NAP



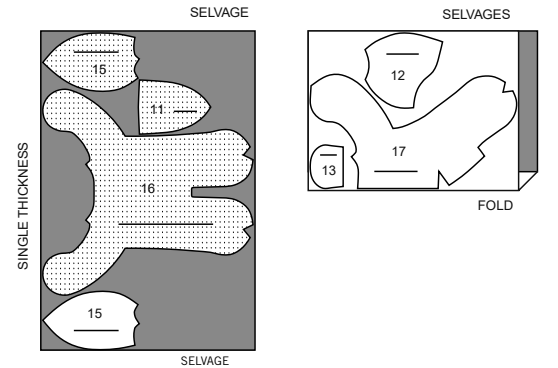
CONTRAST (BELLY, INNER EARS AND PAWS APPLIQUES)

CUT ONE OF PIECE 14 EACH OF FABRIC AND PAPER BACKED FUSIBLE WEB REMNANTS.

INTERFACING

PIECES 11 12 13 15 16 17

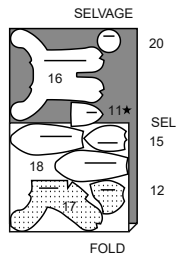
20" (51CM)



BUNNY D

USE PIECES 11 12 15 16 17 18 20

45" (115CM)
WITH NAP



CUTTING LAYOUTS CONTINUED ON PAGE 2

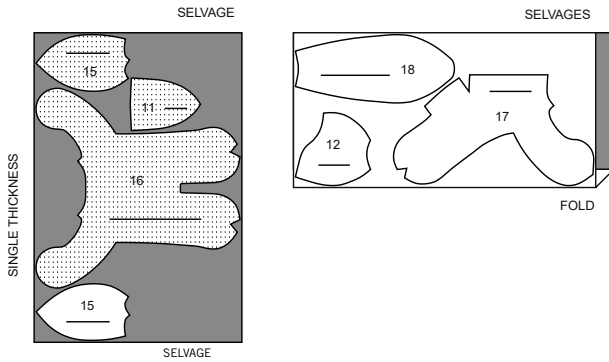
CONTRAST (INNER EARS AND PAWS APPLIQUES)

CUT ONE OF PIECE 19 EACH OF FABRIC AND PAPER BACKED FUSIBLE WEB REMNANTS.

INTERFACING

USE PIECES 11 12 15 16 17 18

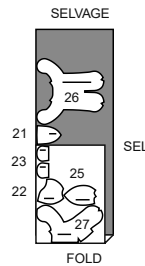
20" (51CM)



BEAR E

USE PIECES 21 22 23 25 26 27

45" (115CM)
WITH NAP



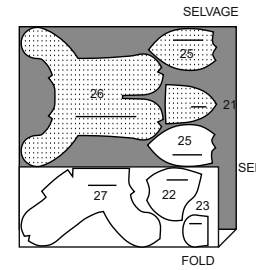
CONTRAST (BELLY, INNER EARS AND PAWS APPLIQUES)

CUT ONE OF PIECE 24 EACH OF FABRIC AND PAPER BACKED FUSIBLE WEB REMNANTS.

INTERFACING

USE PIECES 21 22 23 25 26 27

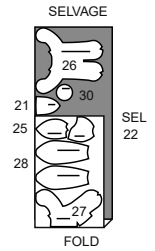
20" (51CM)



BUNNY F

USE PIECES 21 22 25 26 27 28 30

45" (115CM)
WITH NAP



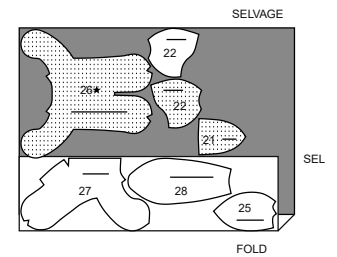
CONTRAST (INNER EARS AND PAWS APPLIQUES)

CUT ONE OF PIECE 29 EACH OF FABRIC AND PAPER BACKED FUSIBLE WEB REMNANTS.

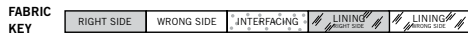
INTERFACING

USE PIECES 21 22 25 26 27 28

20" (51CM)



Sewing Directions



Read **General Directions** on page 1 before you begin.

SIMPLY THE BEST TECHNIQUES FOR SEWING FLEECE

- Fleece fabric is strong, hard to puncture or tear and doesn't ravel. Since cut edges of fleece fabrics do not ravel, inner edges of seams and hems can be left raw.
- When pinning pieces together, use long pins...the kind with bead heads are best because short pins tend to get lost in the fleece.
- Use a ball point needle.

- When stitching, try using a narrow zig-zag stitches, adjusting the width and length for the type of fleece you are using. Always test first on some scraps and keep for reference.
- Sew slowly and carefully the first time you stitch a seam as stitches are hard to remove.
- When sewing around shaped areas sew slowly being careful not to stretch the fleece as you feed fabric through your machine.
- Finger press or steam press on a low temperature setting using a press cloth.
- Raw edges can also be cut with pinking shears.

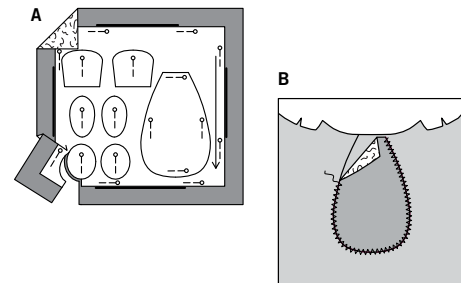
GENERAL DIRECTIONS FOR APPLIQUES

PREPARING APPLIQUES

- Apply paper backed fusible web to **WRONG** side of applique fabric, following manufacturer's directions. Cut applique tissue block along outer solid line. Pin pattern to **RIGHT** side of prepared fabric. Cut out each applique. Transfer any markings to **RIGHT** side of applique using a washable fabric marking pen or pencil.

APPLYING APPLIQUES

- Pin applique(s) to section as instructed in Sewing Directions. Be sure to clear all seam allowances. A glue stick can be used to temporarily hold the applique(s) in place before stitching. Fuse appliques in place, following manufacturer's directions. Zigzag (satin) stitch along raw edges and/or broken lines.



SEWING TUTORIALS



Build your skills viewing short, easy-to-follow videos at simplicity.com/sewingtutorials

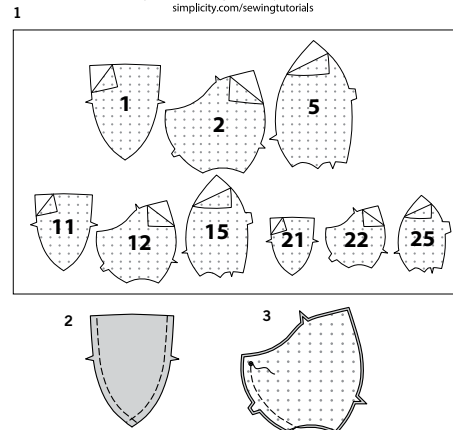
Sewing methods in **BOLD TYPE** have Sewing Tutorial Video available. Scan QR CODE to watch videos:

- DART** - see Darts: "sewing flat dart" video.
- REINFORCE** - see Machine Stitches: "how to reinforce" video.

PATTERN PIECES WILL BE IDENTIFIED BY NUMBERS THE FIRST TIME THEY ARE USED.

STITCH 3/8" (1CM) SEAMS WITH RIGHT SIDES TOGETHER UNLESS OTHERWISE STATED.

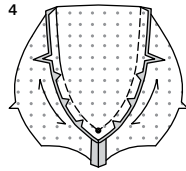
STUFFED ANIMALS A, B, C, D, E, F



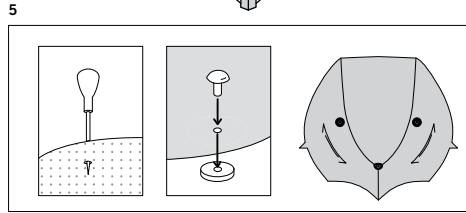
- Apply fusible interfacing to **WRONG** side of HEAD FRONT (1, 11, or 21), HEAD SIDE (2, 12, or 22), HEAD BACK (5, 15, or 25) sections, following manufacturer's directions.
- REINFORCE** side edges of head front a scant 3/8"(1cm) from raw edges.
- Pin center front seam of head side sections, matching double notches and small dots. Stitch seam as far as small dot, back-stitching at small dot to reinforce seam.

S9941

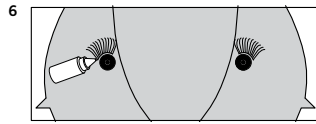
3 of 4



4. With RIGHT sides together and raw edges even, pin head sides to head front, matching single notches and small dots. Stitch, breaking and reinforcing stitches at small dot. Clip curves. Turn seam toward head sides. Press if necessary.



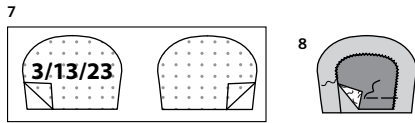
5. To attach each eye, using a sharp pointed object or an awl, poke a hole at small dot on each head side. Insert eye shank through opening from OUTSIDE; on INSIDE secure in place with washer making sure it is on securely. Apply nose at small dot in center of head in same manner.



6. **OPTIONAL**- Cut a set of eyelashes to measure approximately 1/2" (1.3cm) in length along lash line. Apply glue to lash line and adhere to face just above eyes, as shown. To further secure lashes, hand-sew then in place along lash line.

BEAR EARS A, C, E

NOTE: Prepare BELLY, INNER EARS AND PAWS APPLIQUE (3, 13, or 23). See GENERAL DIRECTIONS FOR APPLIQUES. Set aside remaining appliques for body.

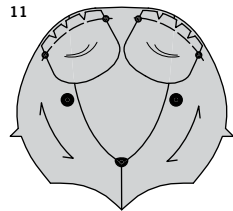


7. Apply interfacing to WRONG side of two EAR (3, 13, or 23) sections. These will be used for the front of the ears; the remaining sections will be used for the back of the ears.



8. On OUTSIDE, pin one inner ear applique to front ear along broken lines, having lower raw edges even. Fuse applique in place, then zigzag along outer edges.

9. Stitch ear back to ear front along outer edges, leaving short edges with small dots open. Clip curves.

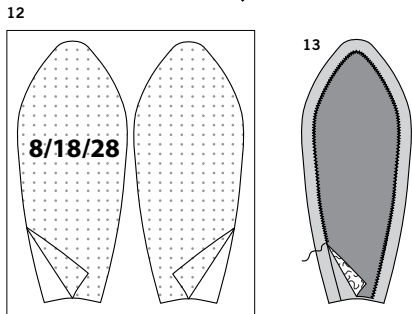


10. Turn ear; finger or lightly press. Stitch raw edges together a scant 3/8" (1cm) from raw edge.

11. On OUTSIDE, baste ears (front side down) to sides of head, matching small dots, and having raw edges even, clipping ear to stitch along curves.

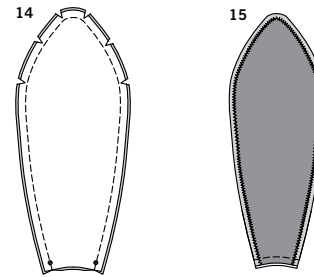
BUNNY EARS B, D, F

NOTE: Prepare INNER EARS AND PAWS APPLIQUE (9, 19, or 29). See GENERAL DIRECTIONS FOR APPLIQUES. Set aside remaining appliques for body.



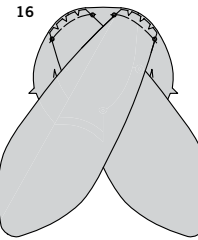
12. Apply interfacing to WRONG side of two EAR (8, 18, or 28) sections. These will be used for the front of the ears; the remaining sections will be used for the back of the ears.

13. On OUTSIDE, pin one inner ear applique to front ear along broken lines, having raw edges even. Fuse applique in place, then zigzag along outer edges.



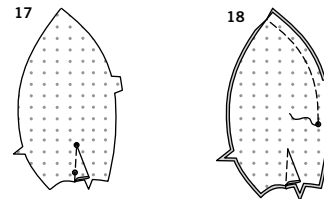
14. Stitch ear front to ear back along outer edges, leaving short edges with small dots open. Clip curves.

15. Turn ear; finger or lightly press. Stitch raw edges together a scant 3/8" (1cm) from raw edge.



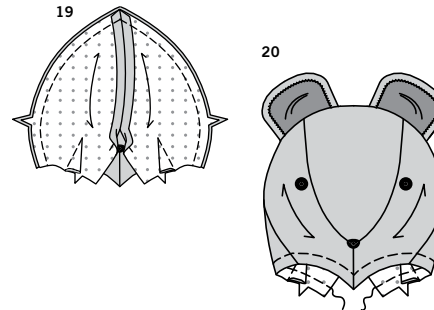
16. On OUTSIDE, baste ears (front side down) to sides of head, matching small dots, and having raw edges even, clipping ear to stitching along curves.

CONTINUE AS FOLLOWS FOR ALL VIEWS



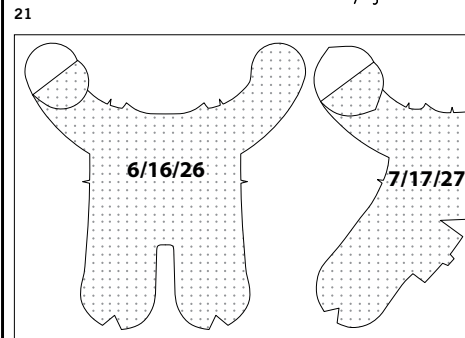
17. Make DART in each head back section, bringing broken lines together and matching small dots. Turn toward triple-notched edge, pressing if necessary.

18. Pin center back seam of head back sections, matching triple notches and small dots. Stitch seam above small dot, back-stitching at small dot to reinforce.



19. Pin bead back to head front along top and sides, matching small dots and scrunching up ears for Views B, D, F. Stitch, leaving neck edge open, being careful not to catch in free edges of ears. Clip curves where necessary.

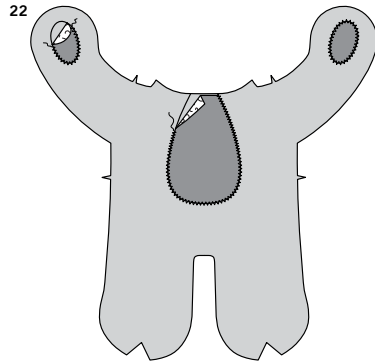
20. Turn head RIGHT side out. Machine stitch a scant 3/8" (1cm) from lower raw edge.



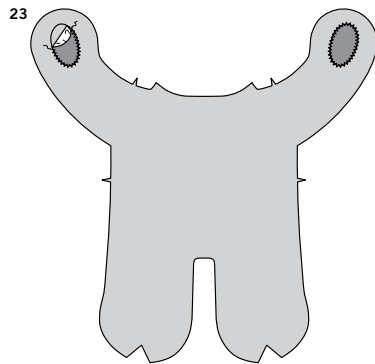
21. Apply interfacing to WRONG side of FRONT (6, 16, or 26) and BACK (7, 17, or 27) sections.

S9941

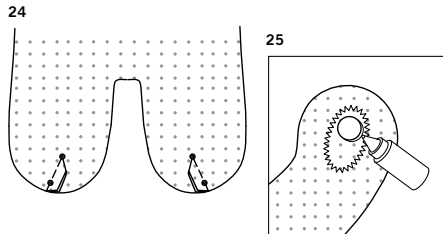
4 of 4



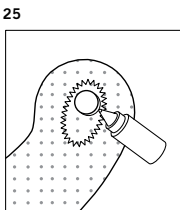
22. APPLIQUES A, C, E - On **OUTSIDE**, pin belly and arm paw appliques to front along corresponding broken lines. Fuse appliques in place, then zigzag along outer edges.



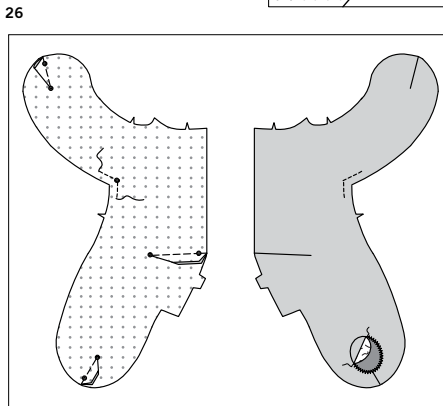
23. APPLIQUES B, D, F - On **OUTSIDE**, pin arm paws to front along broken lines. Fuse appliques in place, then zigzag along outer edges.



24. FOR ALL VIEWS - Make **DART** on each front leg; turn toward center, pressing if necessary.

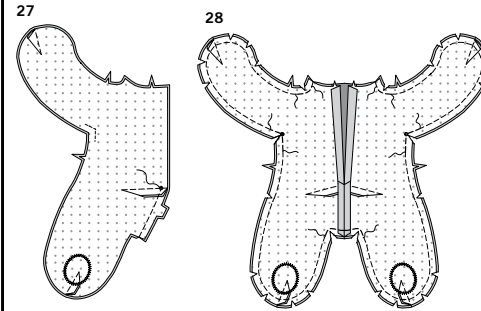


25. Place one half of magnet on **WRONG** side of each front arm over paw area, centering between raw edges, clearing seam allowances, as shown. Glue in place, following manufacturer's directions.

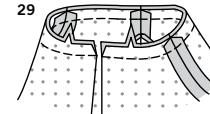


26. To **REINFORCE** underarms of back sections, stitch along seam line for about 1" (2.5cm) on each side of small dot, stitching through small dot. Stitch dart seams on paw, leg, and back in same manner as for **DART**.

Turn leg dart toward center back and remaining darts down, pressing each if necessary. On **OUTSIDE**, pin leg paw appliques to back leg along corresponding broken lines. Fuse applique in place, then zigzag along outer edges.

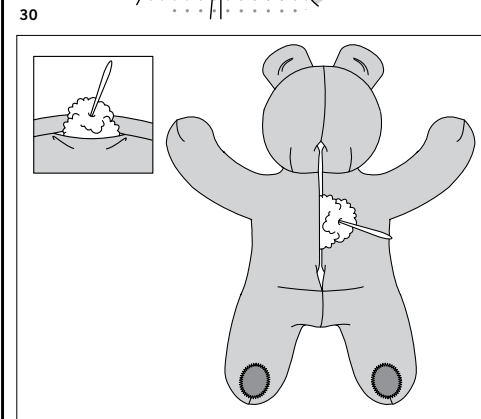


27. Pin center back seam of back sections, matching small dots and dart seams. Stitch seam below small dot, back-stitching at small dot.

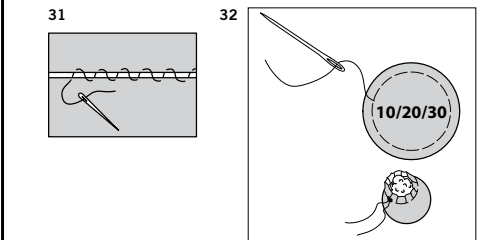


28. With **RIGHT** sides together and raw edges even, pin back to front, matching small dots, centers front and back. Stitch, leaving neck edge open, pivoting with needle in fabric at small dots.

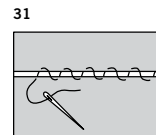
REINFORCE seam at inner corners and sharp curves. Clip curves and to inner corners where reinforced, as shown.



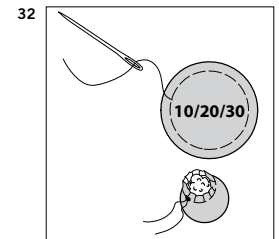
29. Insert head into body with **RIGHT** sides together, matching centers, side seams and notches, having raw edges even; pin. Stitch neck between opening edges. If you prefer, **REINFORCE** seam.



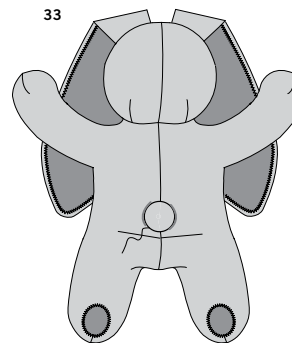
30. Turn bear or bunny **RIGHT** side out. To prepare stuffing, pull fiberfill apart and fluff it before you use it. Break apart the lumps and thick spots to help create a smooth looking animal. Use pieces about the size of a tennis ball. Stuff legs, arms, head, and body, packing fiberfill in place with the end of a long handled wooden spoon or chopstick. Pack firmly in place each time stuffing is added. Use both hands to mold and shape, being careful not to over stuff or make animal lopsided.



31. Thread a hand-sewing needle with a strong thread. To ladder stitch opening closed, take a small stitch in one edge close to seam. Pull up thread after each stitch to bring edges together. Continue to alternate from edge to edge with the smallest hand-stitches possible. Knot thread securely at end of stitching.



32. BUNNY TAIL B, D, E - Using a hand running stitch, stitch $\frac{3}{8}$ " (1cm) from raw edge of **TAIL** (10, 20, or 30). Lightly stuff, pulling up stitches around stuffing to form a rounded tail.



33. Hand-sew tail to back of bunny at large dot.

FOR ALL VIEWS - Bring paws together at front, attracting magnets to each other.



Congrats!

You've completed your sewing adventure

**SHARE
YOUR** LOOK



Post your pattern and tag us
@simplicity_creative_group and **#simplicitypatterns**
for a chance to be featured on our social media.

Look for more PDF patterns at [simplicity.com](https://www.simplicity.com)

Have a question or need help with your sewing project call us at
1-888-588-2700



Simplicity ©2024 a division of IG Design Group Americas Inc. • Atlanta, GA 30342 USA www.thedesigngroup.com • All Rights Reserved. www.simplicity.com • Made in the U.S.A. Fabriqué aux États-Unis.

To be used for individual private home use only and not for commercial or manufacturing purposes. • A usage privé seulement et non à des fins commerciales ou de production en série. • Para uso privado solamente, no se puede utilizar con propósitos de comercialización o de producción en serie.