

S9940

Simplicity[®]



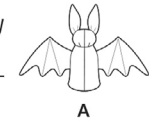
Designed and printed in USA.

easy-to-sew

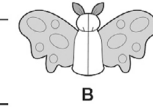
Shop all the pattern brands you love @

Simplicity[®].com

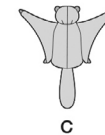
Easy



A



B



C

PLUSH BAT, MOTH AND FLYING SQUIRREL

Suggested Fabrics: Cotton Types, Flannel, Fleece, Minky Fleece. **Antennae B, Appliqués and Ears, Hands and Feet C** in Felt. **Batting:** Low Loft. **Interfacing:** Lightweight Fusible.

Notions: A,B,C: Polyfiberfill. **Also for A,C:** Pair of 8mm safety eyes, one 8mm safety nose. **Also for B:** Pair of 16mm safety eyes, ¼ yd. (0.4m) of ¼" (1.5cm) grosgrain ribbon.

Bat A

45"* - ½ yd. (115cm* - 0.5m)

Contrast (Inner Ear Appliqués, Wings): 45"* - ¾ yd. (115cm* - 0.3m)

Batting: 45" - ¾ yd. (115cm* - 0.3m)

Interfacing: 20" - ¾ yd. (115cm* - 0.6m)

Paper-backed fusible web: 5" x 6" (13cm x 15cm) remnant

Moth B

45"* - ¾ yd. (115cm* - 0.3m)

Contrast (Wings): 45"* - ½ yd. (115cm* - 0.5m)

Batting: 45" - ½ yd. (115cm* - 0.3m)

Interfacing: 20" - ¾ yd. (115cm* - 0.6m)

Antennae and Small Spot Appliqués: 6" x 9" (15cm x 23cm) felt remnant

Large Spot Appliqués: 7" x 9" (18cm x 23cm) felt remnant

Paper-backed fusible web: 9" x 12" (23cm x 30cm) remnant

Flying Squirrel C

45"* - ½ yd. (115cm* - 0.5m)

Contrast (Front, Tail): 45"* - ½ yd. (115cm* - 0.5m)

Batting: 45" - ½ yd. (115cm* - 0.3m)

Interfacing: 20" - 1 yd. (51cm - 0.9m)

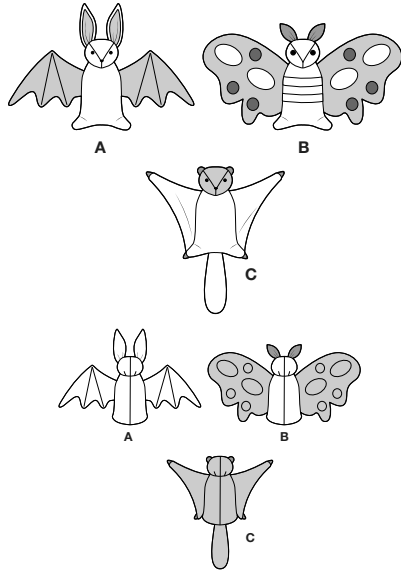
Ears, Hands, Feet: 4" x 11" (10cm x 28cm) felt remnant

Paper-backed fusible web: 4" x 6" (10cm x 15cm) remnant

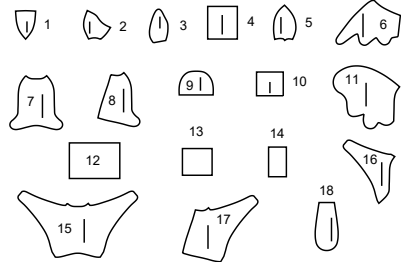
*with nap **without nap

Simplicity® S9940

Thank you for purchasing this Simplicity pattern.
We made every effort to provide you with a high quality product.

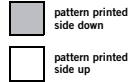


18 PIECES



- 1 HEAD FRONT - A,B,C
- 2 HEAD SIDE - A,B,C
- 3 EAR - A
- 4 INNER EAR APPLIQUE - A
- 5 HEAD BACK - A,B,C
- 6 WING - A
- 7 FRONT - A,B
- 8 BACK - A,B
- 9 BOTTOM - A,B,C
- 10 ANTENNAE - B
- 11 WING - B
- 12 LARGE SPOT APPLIQUE - B
- 13 SMALL SPOT APPLIQUE - B
- 14 EAR, HANDS AND FEET - C
- 15 FRONT - C
- 16 WING - C
- 17 BACK - C
- 18 TAIL - C

Cutting Layouts



POSITION OF PATTERN PIECES MAY VARY SLIGHTLY ACCORDING TO YOUR PATTERN SIZE

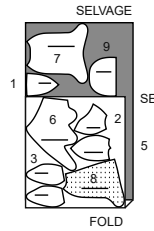
General Directions For Cutting

- PRE-SHRINK** and iron all fabric.
- FOR DOUBLE THICKNESS** -Fold fabric with RIGHT sides together. Pin pattern to WRONG side of fabric.
- FOR SINGLE THICKNESS** -Pin pattern to RIGHT side of fabric.
- ★ If layout shows a piece extending past fold, cut out all pieces except piece that extends. Open out fabric to single thickness. Cut extending piece on RIGHT side of fabric in position shown.
- ✱ Mark small arrows along both selvages in dicing direction of nap or design. Fold fabric crosswise with RIGHT sides together, and cut along fold. Turn one fabric layer around so arrows on both layers go in the same direction. Place RIGHT sides together.

BAT A

PIECES 1 2 3 5 6 7 8 9

45" (115CM)
WITH NAP



CONTRAST (INNER EAR APPLIQUES, WINGS)

PIECES 4 6

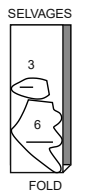
45" (115CM)
WITH NAP



BATTING

PIECES 3 6

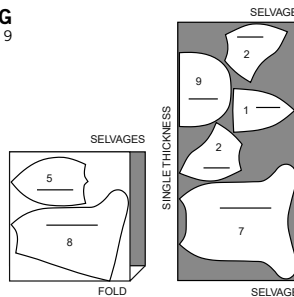
45" (115CM)



INTERFACING

PIECES 1 2 5 7 8 9

20" (51CM)



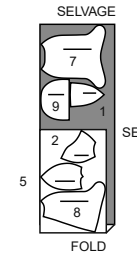
PAPER BACKED FUSIBLE WEB

CUT ONE OF PIECE 4 FROM PAPER BACKED FUSIBLE WEB REMNANT

MOTH B

PIECES 1 2 5 7 8 9

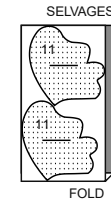
45" (115CM)
WITH NAP



CONTRAST (WINGS)

PIECE 11

45" (115CM)
WITH NAP



BATTING

PIECE 11

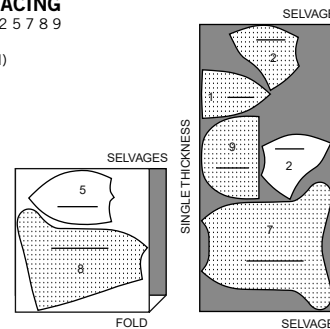
45" (115CM)



INTERFACING

PIECES 1 2 5 7 8 9

20" (51CM)



ANTENNAE AND SMALL SPOT APPLIQUES

CUT ONE EACH OF PIECES 10 13 FROM FELT REMNANTS

LARGE SPOT APPLIQUES

CUT ONE OF PIECE 12 FROM FELT REMNANT

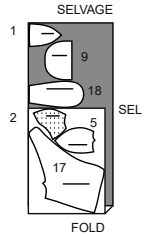
PAPER BACKED FUSIBLE WEB

CUT ONE EACH OF PIECES 10 12 13 FROM PAPER BACKED FUSIBLE WEB REMNANTS

FLYING SQUIRREL C

PIECES 1 2 5 9 17 18

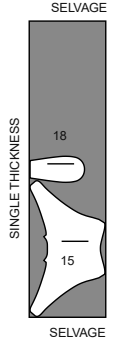
45" (115CM)
WITH NAP



CONTRAST (FRONT, TAIL)

PIECES 15 18

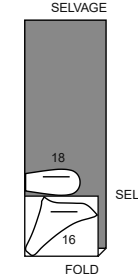
45" (115CM)
WITH NAP



BATTING

PIECES 16 18

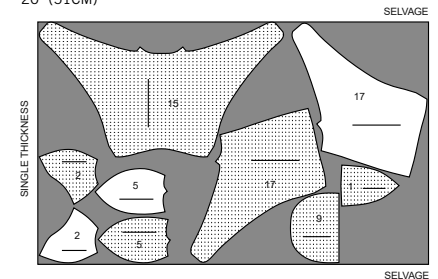
45" (115CM)



INTERFACING

PIECES 1 2 5 9 15 17

20" (51CM)



EARS, HANDS, FEET

CUT TWO OF PIECE 14 FROM FELT REMNANT

PAPER BACKED FUSIBLE WEB

CUT ONE OF PIECE 14 FROM PAPER BACKED FUSIBLE WEB REMNANT

S9940

2 of 5

Sewing Directions

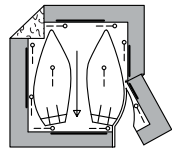


Read **General Directions** on page 1 before you begin.

SIMPLY THE BEST TECHNIQUES FOR SEWING FLEECE

- Fleece fabric is strong, hard to puncture or tear and doesn't ravel. Since cut edges of fleece fabrics do not ravel, inner edges of seams and hems can be left raw.
- When sewing around shaped areas sew slowly being careful not to stretch the fleece as you feed fabric through your machine.
- Finger press or steam press on a low temperature setting using a press cloth.
- Raw edges can also be cut with pinking shears.
- When pinning pieces together, use long pins...the kind with bead heads are best because short pins tend to get lost in the fleece.
- Use a ball point needle.
- When stitching, try using a narrow zig-zag stitches, adjusting the width and length for the type of fleece you are using. Always test first on some scraps and keep for reference.

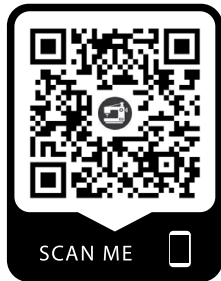
PREPARING APPLIQUES



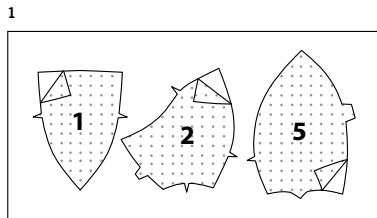
APPLYING APPLIQUES



SEWING TUTORIALS



Build your skills viewing short, easy-to-follow videos at simplicity.com/sewingtutorials



GENERAL DIRECTIONS FOR APPLIQUES

PREPARING APPLIQUES

- A.** Apply paper backed fusible web to **WRONG** side of applique fabric, following manufacturer's directions. Pin pattern to **RIGHT** side of prepared fabric. Cut out each applique. Transfer any markings to **RIGHT** side of applique using a washable fabric marking pen or pencil.

APPLYING APPLIQUES

- B.** Pin applique(s) to section as instructed in Sewing Directions. Be sure to clear all seam allowances. A glue stick can be used to temporarily hold the applique(s) in place before stitching. Fuse appliques in place, following manufacturer's directions. Straight stitch or zigzag (satin) stitch along raw edges and/or broken lines.

Sewing methods in **BOLD TYPE** have Sewing Tutorial Video available. Scan QR CODE to watch videos:

DART - see **Darts: "sewing flat dart"** video.

EDGE STITCH - see **Machine Stitches: "how to edgestitch"** video.

REINFORCE - see **Machine Stitches: "how to reinforce"** video.

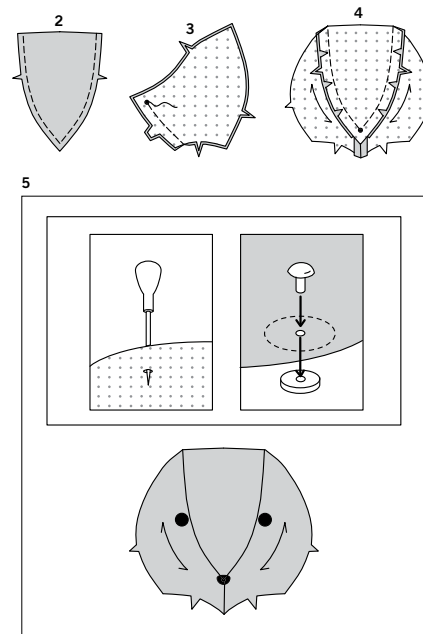
TRIM - see **How to Sew: Trim, Clip, and Layer Seams** video.

PATTERN PIECES WILL BE IDENTIFIED BY NUMBERS THE FIRST TIME THEY ARE USED.

STITCH SEAMS IN A 3/8"(1CM) SEAM WITH RIGHT SIDES TOGETHER UNLESS OTHERWISE STATED.

BAT A AND MOTH B

1. Apply fusible interfacing to **WRONG** side of **HEAD FRONT (1)**, **HEAD SIDE (2)**, and **HEAD BACK (5)** sections, following manufacturer's directions.



2. Machine-stitch side edges of head 1/4"(6mm) from raw edge, as shown.
3. Pin center front seam of head side sections, matching double notches and small dots. Stitch seam below small dot, back-stitching at small dot to reinforce seam.
4. Pin head sides to head front, matching single notches and small dots, clipping sides to stitching to fit. Stitch, breaking and reinforcing stitches at small dot. Clip curves. Turn seam toward head sides. Press.
5. To attach each eye, using a sharp pointed object or an awl, poke a hole at small dot on each head side. Insert eye shank through opening from **OUTSIDE**; on **INSIDE** secure in place with washer making sure it is on securely. Apply nose at small dot in center of head in same manner.

EARS A

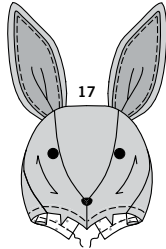
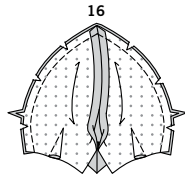
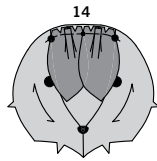
6. Pin batting to **WRONG** side of two mirror **EAR (3)** sections. These will be used for the front of the ears; the remaining sections will be used for the back of the ears.

*NOTE: Prepare **INNER EAR APPLIQUE (4)**. See **GENERAL DIRECTIONS FOR APPLIQUES**.*

7. On **OUTSIDE**, pin inner ear applique to front ear along broken lines, having lower raw edges even. Fuse applique in place. **EDGE STITCH** appliques.
8. Stitch back ear to front ear along side edges, leaving edges with small and large dots open. Clip curves.
9. Turn ear; finger or lightly press. Hand-baste along broken pleat lines through all thicknesses.
10. To make pleat, bring broken lines on front together. Stitch along broken lines. Finger-press pleat flat bringing stitching to center. Machine-stitch 1/4"(6mm) from raw edges.
11. On **OUTSIDE**, pin ears (front side) to sides of head, matching small and large dots, clipping seam allowance of ear to fit; baste.

ANTENNAE B

12. Sandwich and fuse paper backed fusible web between **WRONG** side of **ANTENNAE (10)** fabric sections, following manufacturer's directions. Pin pattern to **RIGHT** side of prepared fabric. Cut out each section.
13. To make pleat, bring broken lines on front together. Stitch along broken lines. Finger-press pleat flat, bringing stitching to center. Machine-stitch a scant 3/8"(1cm) from raw edges.

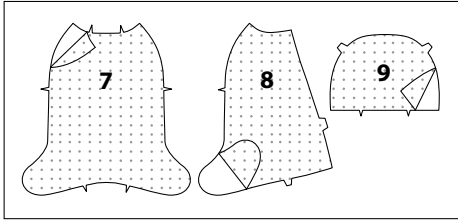


14. On **OUTSIDE**, pin antennae (front side) to top of front head, matching small and large dots, clipping seam allowance of antennae to fit; baste.

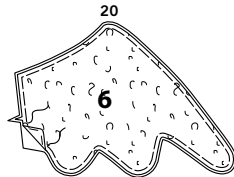
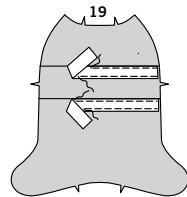
CONTINUE AS FOLLOWS FOR BAT A AND MOTH B

15. Make **DART** in each head back section, bringing broken lines together and matching small dots. Press toward center back. Pin center back seam of head back sections, matching triple notches. Stitch seam above notches, back-stitching at end of opening to reinforce seam.
16. Pin head back to head front, matching centers, keeping ears away from seam lines. Stitch, leaving neck edge open. Clip curves.
17. Turn head **RIGHT** side out; finger or lightly press. Machine-stitch side edges of head 1/4" (6mm) from lower raw edge.

18



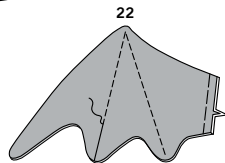
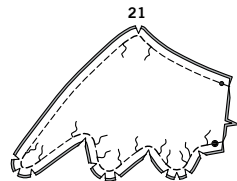
18. Apply interfacing to **WRONG** side of **FRONT** (7) and **BACK** (8), and **BOTTOM** (9) sections.



19. **TRIM B** - On **OUTSIDE**, pin upper edge of ribbon to front along placement lines. **EDGESTITCH** long edges.

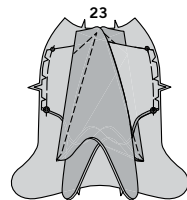
WINGS A

20. Pin batting to **WRONG** side of **CONTRAST WING** (6) sections, having raw edges even. Baste 1/4" (6mm) from raw edges.



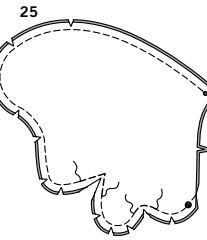
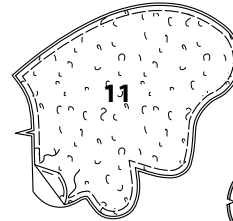
21. Pin **FABRIC** wing to **CONTRAST** wing, having raw edges even. Stitch outer edges, leaving notched edge open. **REINFORCE** seam along sharp inner and outer curves. **TRIM** seam; clip curves.

22. Turn wing; finger or lightly press. Baste raw edges together. On **CONTRAST** side, stitch along stitching lines, forming fingers.



23. On **OUTSIDE**, baste wings to side edges of front, matching small and large dots, clipping wing seam allowance where necessary.

24

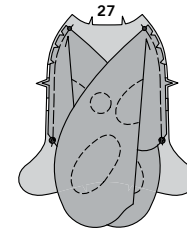
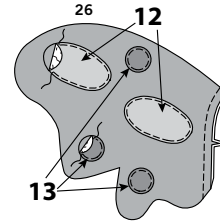


WINGS B

24. Pin batting to **WRONG** side of two mirror **WING** (11) sections. Baste 1/4" (6mm) from raw edges. These will be used for the front of the wings; the remaining sections will be used for the back of the wings.

25. Pin back wing to front wing, having raw edges even. Stitch outer edges, leaving notched edge open. **REINFORCE** seam along corners and sharp curves. **TRIM** seam. Clip curves and to stitching at inner corner, being careful not to clip into stitching.

*NOTE: Prepare **LARGE SPOT APPLIQUE** (12) and **SMALL SPOT APPLIQUE** (13) sections. See **GENERAL DIRECTIONS FOR APPLIQUES**.*



26. Turn wing; finger or lightly press. On **OUTSIDE**, pin appliques to front wings along corresponding broken lines. Fuse appliques in place. **EDGESTITCH** appliques through all thicknesses.

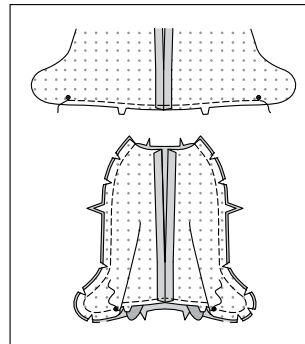
27. On **OUTSIDE**, pin wings (front side) to side edges of fronts, matching small and large dots, clipping wings to stitching where necessary. Baste.

CONTINUE AS FOLLOWS FOR BAT A AND MOTH B

28. Pin center back seam of back sections, matching triple notches. Stitch seam below notches, back-stitching at notches to reinforce seam.

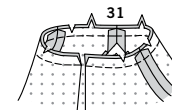
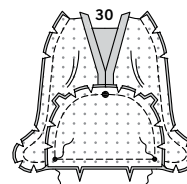


29



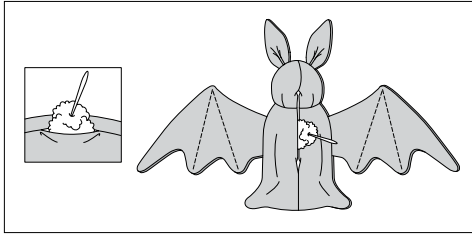
29. Machine-stitch lower edge of back 1/4" (6mm) from raw edge between small dots, as shown. With **RIGHT** sides together and raw edges even, front to back at sides and feet, matching small dots. Stitch each side to small dot, back-stitching at small dot.

30. Pin bottom to lower edge of body, matching centers, small and large dots, clipping back to stitching where necessary. Stitch, breaking and reinforcing stitches at small dots. Trim seam; clip curves. Turn seam away from bottom, pressing if necessary.



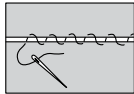
31. With **RIGHT** sides together and raw edges even, insert head into body, matching centers, side seams, notches, and opening edges; pin. Stitch neck between opening edges. If you prefer, **REINFORCE** seam. Clip curves.

32



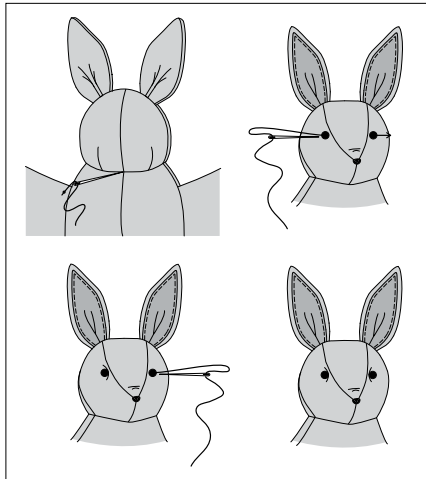
32. Turn bat or moth **RIGHT** side out. To prepare stuffing, pull fiberfill apart and fluff it before you use it. Break apart the lumps and thick spots to help create a smooth looking animal. Use pieces about the size of a tennis ball. Stuff head, and body, packing fiberfill in place with the end of a long handled wooden spoon or chopstick. Pack firmly in place each time stuffing is added. Use both hands to mold and shape, being careful not to over stuff or make animal lopsided.

33



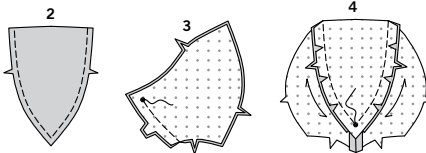
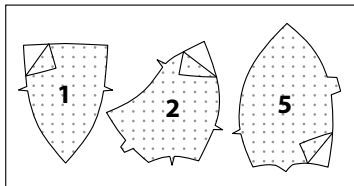
33. Thread a hand-sewing needle with a strong thread. To ladder stitch opening closed, take a small stitch in one edge close to seam. Pull up thread after each stitch to bring edges together. Continue to alternate from edge to edge with the smallest hand-stitches possible. Knot thread securely at end of stitching.

34



34. **OPTIONAL-** To indent eyes, thread a long upholstery needle with a heavy thread, leaving a long thread ends. Insert needle into neck seam at center back, coming out under one eye on outside. Insert needle sideways through head (close to where you came out) and come out on **OUTSIDE** under opposite eye. In same manner, insert needle back under eye, coming out at neck seam close to where you started. Pull threads to indent eyes and secure in a knot. Hide thread ends by inserting them back into head or body.

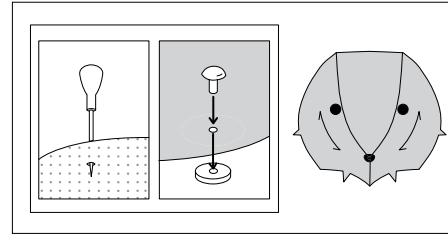
1



FLYING SQUIRREL C

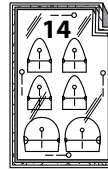
1. Apply fusible interfacing to **WRONG** side of **HEAD FRONT (1)**, **HEAD SIDE (2)**, and **HEAD BACK (5)** sections, following manufacturer's directions.
2. Machine-stitch side edges of head 1/4"(6mm) from raw edge, as shown.
3. Pin center front seam of head side sections, matching double notches and small dots. Stitch seam below small dot, back-stitching at small dot to reinforce seam.
4. Pin head sides to head front, matching single notches and small dots, clipping sides to stitching to fit. Stitch, breaking and reinforcing stitches at small dot. Clip curves. Turn seam toward head sides. Press.

5

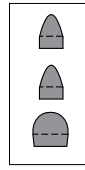


5. To attach each eye, using a sharp pointed object or an awl, poke a hole at small dot on each head side. Insert eye shank through opening from **OUTSIDE**; on **INSIDE** secure in place with washer making sure it is on securely. Apply nose at small dot in center of head in same manner.

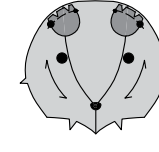
6



7



8

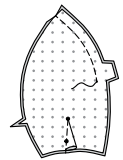


6. Sandwich and fuse paper backed fusible web between **WRONG** sides of **EARS, HANDS AND FEET (14)** fabric sections, following manufacturer's directions. Pin pattern to **RIGHT** side of prepared fabric. Cut out each section.

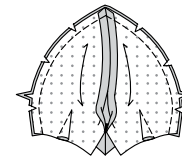
7. Machine-stitch lower edge of each section 1/4"(6mm) from raw edge. Set aside hands and feet for use in a later step.

8. On **OUTSIDE**, pin ears to side edges of front head, matching small and large dots, clipping ears to stitching to fit.

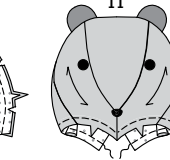
9



10



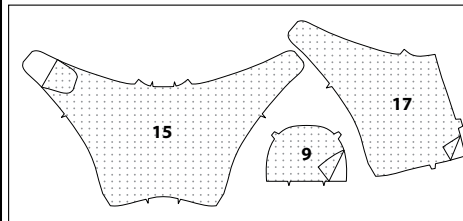
11



9. Make **DART** in each head back section, bringing broken lines together and matching small dots. Press toward center back. Pin center back seam of head back sections, matching triple notches and small dots. Stitch seam above notches, back-stitching at end of opening to reinforce seam.

10. Pin head back to head front, matching centers. Stitch, leaving neck edge open. Clip curves.

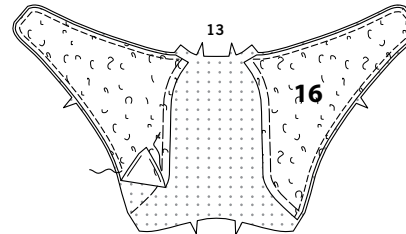
12



11. Turn head **RIGHT** side out. Machine-stitch side edges of head 1/4"(6mm) from lower raw edge.

12. Apply interfacing to **WRONG** side of **FRONT (15)**, **BACK (17)**, and **BOTTOM (9)** sections.

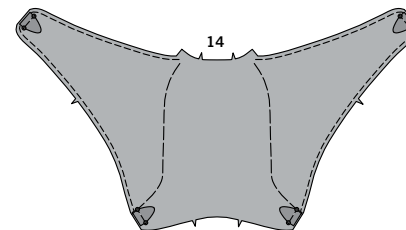
13



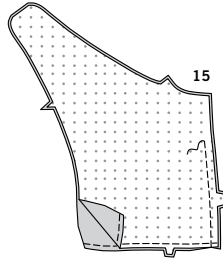
16

13. Pin **WING (16)** batting sections to **WRONG** side of front, matching broken lines and having raw outer edges even. Hand-baste along stitching lines, forming wings. Machine-stitch 1/4"(6mm) from outer raw edges.

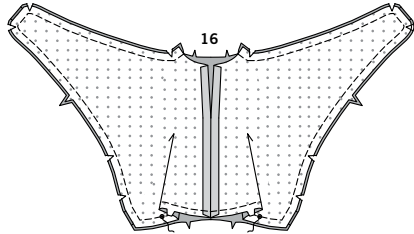
14



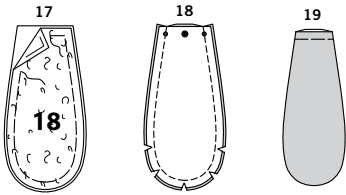
14. On **OUTSIDE**, baste hands and feet to front, matching corresponding small dots.



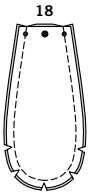
15. Machine-stitch lower edge of each back section 1/4"(6mm) from raw edge.
Pin center back seam of back sections, matching triple notches. Stitch seam to within 3"(7.5cm) of upper edge, back-stitching to reinforce seam.



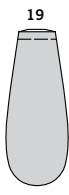
16. With RIGHT sides together and raw edges even, pin back to front at side and lower edges to small dot on lower edge, as shown (it's the one nearest side seam). Stitch, leaving neck edge and lower edges open between small dots, as shown.
REINFORCE seam at inner corners on neck and tips of wings. Clip curves and inner corners.



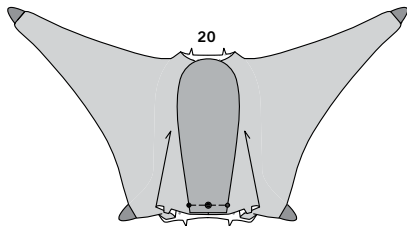
17. Pin batting to WRONG side of TAIL (18) section cut from main fabric having raw outer edges even. Machine-baste raw edges.



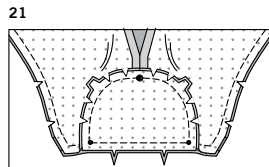
18. Pin contrast tail to tail, having raw edges even. Stitch, leaving end with small and large dots open. Reinforce seam along curves. Clip curves.



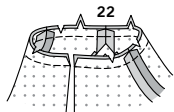
19. Turn tail RIGHT side out; finger or lightly press. Baste raw edges together.



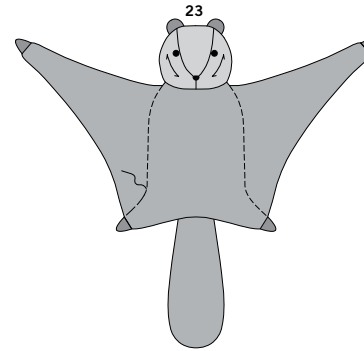
20. On OUTSIDE, baste tail (contrast side up) to lower edge of back, matching small and large dots.



21. Pin bottom to lower edge of body, matching small and large dots, clipping back to stitching to fit, being careful not to clip into stitching. Stitch, breaking and reinforcing stitches at small dots. Clip curves. Press seam toward body.

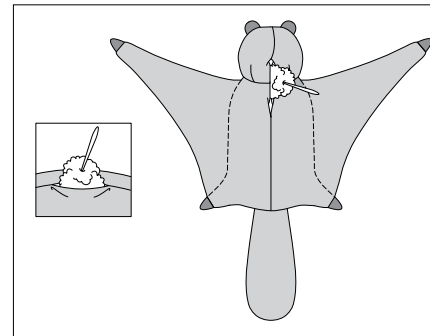


22. Insert head into body with RIGHT sides together, matching centers, side seams and notches, having raw edges even; pin. Stitch neck between opening edges. If you prefer, **REINFORCE** seam. Clip curves.



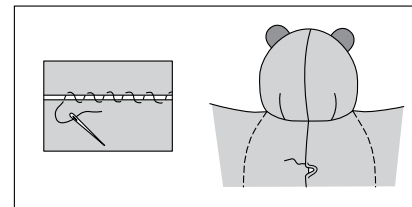
23. Turn squirrel RIGHT side out; finger or lightly press. Have squirrel with front facing up towards you. Pin front and back wings together, matching basting to back stitching lines. Stitch along basting through all thicknesses. Remove basting.

24



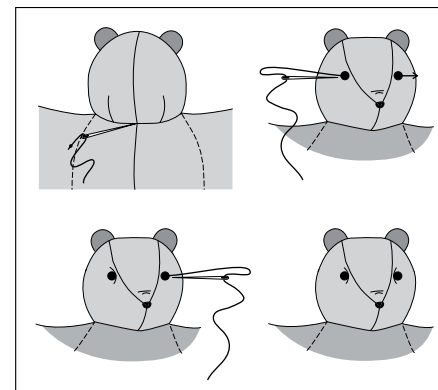
24. Stuff the squirrel body.
To prepare stuffing, pull fiberfill apart and fluff it before you use it. Break apart the lumps and thick spots to help create a smooth looking animal. Use pieces about the size of a tennis ball. Stuff head, and body, packing fiberfill in place with the end of a long handled wooden spoon or chopstick. Pack firmly in place each time stuffing is added. Use both hands to mold and shape, being careful not to over stuff or make animal lopsided.

25



25. Thread a hand-sewing needle with a strong thread. To ladder stitch opening closed, take a small stitch in one edge close to seam. Pull up thread after each stitch to bring edges together. Continue to alternate from edge to edge with the smallest hand-stitches possible. Knot thread securely at end of stitching.

26



26. **OPTIONAL** - To indent eyes, thread a long upholstery needle with a heavy thread, leaving a long thread ends. Insert needle into neck seam at center back, coming out under one eye on outside. Insert needle sideways through head (close to where you came out) and come out on OUTSIDE under opposite eye. In same manner, insert needle back under eye, coming out at neck seam close to where you started. Pull threads to indent eyes and secure in a knot. Hide thread ends by inserting them back into head or body.



Congrats!

You've completed your sewing adventure

**SHARE
YOUR** LOOK



Post your pattern and tag us
@simplicity_creative_group and **#simplicitypatterns**
for a chance to be featured on our social media.

Look for more PDF patterns at [simplicity.com](https://www.simplicity.com)

Have a question or need help with your sewing project call us at
1-888-588-2700



Simplicity ©2024 a division of IG Design Group Americas Inc. • Atlanta, GA 30342 USA www.thedesigngroup.com • All Rights Reserved. www.simplicity.com • Made in the U.S.A. Fabriqué aux États-Unis.

To be used for individual private home use only and not for commercial or manufacturing purposes. • A usage privé seulement et non à des fins commerciales ou de production en série. • Para uso privado solamente, no se puede utilizar con propósitos de comercialización o de producción en serie.