

S9939

**Simplicity**<sup>®</sup>



Shop all the pattern brands you love @

**Simplicity**<sup>®</sup>.com

Average

**11½" (29CM) FASHION DOLL CLOTHES**

**Suggested Fabrics:** A,B,C,D and Contrast E in Dupioni Silk, Jacquard, Lightweight Satin, Shantung, Taffeta. **Contrast C:** Chiffon. **E:** Jersey, Stretch Novelty Knits. **Lining C:** Lining Fabric. **Lining D,E:** Tulle.

**Notions:** A,B,C,D,E: 2½" (6cm) length of ¾" (1cm) hook and loop tape. **Also for A,B:** Three 5mm buttons. **Also for D:** 1¾ yds. (1.3m) of ¼" (6mm) ribbon. **Also for E:** Two size 4/0 snaps, 6" (15cm) length of 22 gauge stem wire.

**Skirt Suit A**

45"\* - ¼ yd. (115cm\* - 0.2m)

**Pants Suit B**

45"\* - ¾ yd. (115cm\* - 0.3m)

**Gown C**

45"\* - ¼ yd. (115cm\* - 0.2m)

**Contrast (Skirt Front, Skirt Back, Flounce, Skirt Drape, Shoulder Wrap)**

45"\* - ⅝ yd. (115cm\* - 0.6m)

**Lining:** 3" x 7" (8cm x 18cm) remnant

**Gown D**

45"\* - ¾ yd. (115cm\* - 0.7m)

**Lining and Petticoat:** 54" - ¾ yd. (140cm - 0.7m)

**Gown and Belt E**

60"\* - ½ yd. (115cm\* - 0.5m)

**Contrast (Coat Bodice Front and Back, Shoulder Wrap, Skirt, Coat Facing)**

45"\* - ½ yd. (115cm\* - 0.5m)

**Lining:** 7" x 11" (18cm x 28cm) remnant

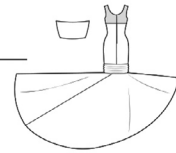
\*with nap \*\*without nap



A



B



C



D



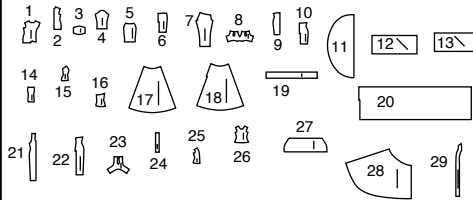
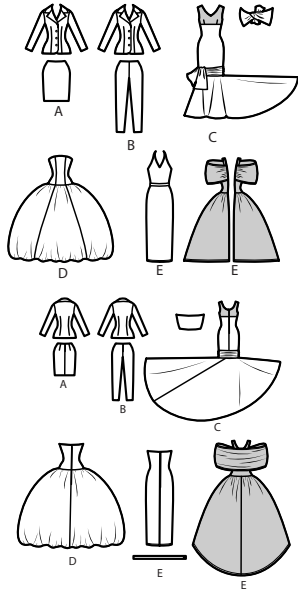
E



E

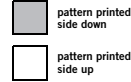
# Simplicity® S9939

Thank you for purchasing this Simplicity pattern.  
We made every effort to provide you with a high quality product.



- 1 JACKET FRONT - A,B
- 2 JACKET BACK - A,B
- 3 COLLAR - A,B
- 4 SLEEVE - A,B
- 5 SKIRT FRONT - A
- 6 SKIRT BACK - A
- 7 PANTS - B
- 8 BODICE - C
- 9 SKIRT FRONT - C
- 10 SKIRT BACK - C
- 11 FLOUNCE - C
- 12 SKIRT DRAPE - C
- 13 SHOULDER WRAP - C
- 14 BODICE FRONT - D
- 15 BODICE SIDE FRONT - D
- 16 BODICE BACK - D
- 17 SKIRT FRONT AND SIDE - D
- 18 SKIRT BACK - D
- 19 PETTICOAT YOKE - D
- 20 PETTICOAT - D
- 21 DRESS FRONT - E
- 22 DRESS BACK - E
- 23 DRESS FACING - E
- 24 BELT - E
- 25 COAT BODICE FRONT - E
- 26 COAT BODICE BACK - E
- 27 SHOULDER WRAP - E
- 28 SKIRT - E
- 29 WRAP FACING - E

## Cutting Layouts



POSITION OF PATTERN PIECES MAY VARY  
SLIGHTLY ACCORDING TO YOUR PATTERN SIZE

### General Directions For Cutting

**PRE-SHRINK** and iron all fabric.

**FOR DOUBLE THICKNESS** -Fold fabric with **RIGHT** sides together. Pin pattern to **WRONG** side of fabric.

**FOR SINGLE THICKNESS** -Pin pattern to **RIGHT** side of fabric.

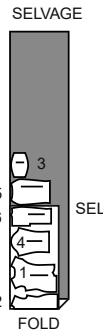
★ If layout shows a piece extending past fold, cut out all pieces except piece that extends. Open out fabric to single thickness. Cut extending piece on **RIGHT** side of fabric in position shown.

✱ Mark small arrows along both selvages in dictating direction of nap or design. Fold fabric crosswise with **RIGHT** sides together, and cut along fold. Turn one fabric layer around so arrows on both layers go in the same direction. Place **RIGHT** sides together.

### SKIRT SUIT A

USE PIECES 1 2 3 4 5 6

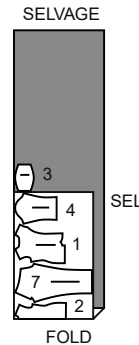
45" (115CM)  
WITH NAP



### PANTS SUIT B

USE PIECES 1 2 3 4 7

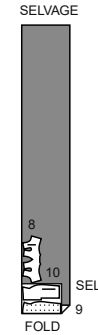
45" (115CM)  
WITH NAP



### GOWN C

USE PIECES 8 9 10

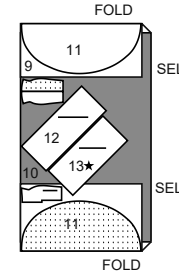
45" (115CM)  
WITH NAP



### CONTRAST C (SKIRT, FLOUNCE, SHOULDER WRAP)

USE PIECES 9 10 11 12 13

45" (115CM)  
WITH NAP



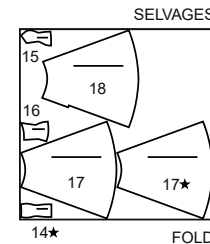
### LINING C

CUT ONE PIECE 8 FROM 3' x 7" (7.5cm x 18cm) FABRIC REMNANT

### GOWN D

USE PIECES 14 15 16 17 18  
CUT ONE OF PIECE 14

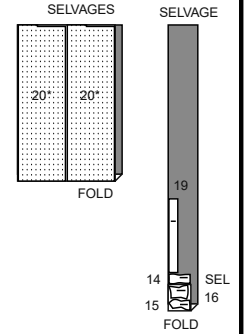
45" (115CM)  
WITH NAP



### LINING AND PETTICOAT D

USE PIECES 14 15 16 19 20

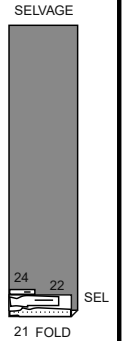
54" (140CM) TULLE



### GOWN AND BELT E

USE PIECES 21 22 24

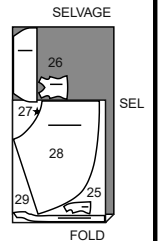
60" (150CM)  
WITH NAP



### CONTRAST E (COAT BODICE FRONT AND BACK, SHOULDER WRAP, SKIRT, WRAP FACING)

USE PIECES 25 26 27 28 29

45" (115CM)  
WITH NAP



### LINING E

CUT ONE OF PIECES 23 24 26 AND TWO OF PIECE 25 FROM  
7" x 11" (18cm x 28cm) TULLE REMNANT

## SEWING TUTORIALS



Build your skills viewing short, easy-to-follow videos at [simplicity.com/sewingtutorials](https://simplicity.com/sewingtutorials)

## Sewing Directions

FABRIC KEY RIGHT SIDE WRONG SIDE INTERFACING LINING LINING

## SIMPLY THE BEST SEWING TECHNIQUES FOR TULLE FABRIC

- Place tissue paper on the underside of tulle when machine-stitching. Tear tissue paper away when done stitching.
- Raw edges can be left unfinished.
- Press with steam or with a pressing cloth, using a low temperature setting. Test first.

## GLOSSARY OF SEWING METHODS

Sewing methods shown in *ITALICS* are defined below:

**DART** – see sewing a flat dart video.

**DART SEAM** – On *INSIDE*, bring broken lines together, matching small dots. Stitch along broken line from raw edge to point. Press dart as directed.

**EDGESTITCH** – see how to sew an edgestitch video.

**GATHER** – See sewing two row gathers video.

**SLIPSTITCH** – See how to slipstitch video.

**TACK** – See how to tack video.

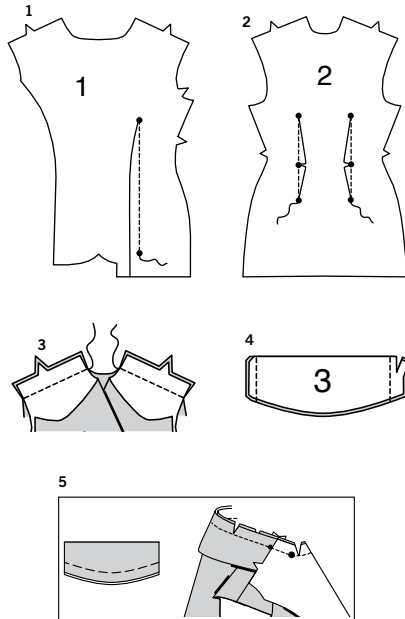
**UNDERSTITCH** – See how to understitch video.

**PATTERN PIECES WILL BE IDENTIFIED BY NUMBERS THE FIRST TIME THEY ARE USED.**

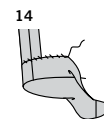
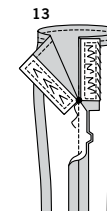
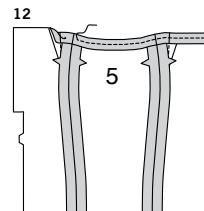
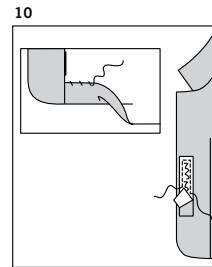
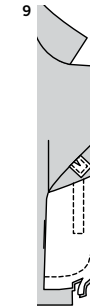
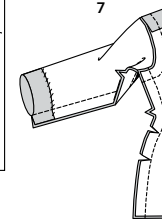
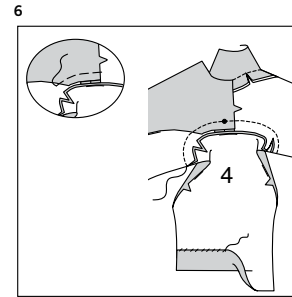
**STITCH 1/4" (6MM) SEAMS WITH RIGHT SIDES TOGETHER UNLESS OTHERWISE STATED.**

## SUIT A, B

## JACKET A, B



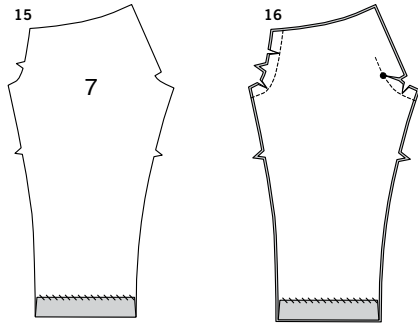
- Make **DART SEAM** in JACKET FRONT (1). Press toward center.
- Make **DART** in JACKET BACK (2), clipping to center dot, if necessary. Press toward center.
- Stitch front to back at shoulder edges.
- Fold COLLAR (3) in half with right sides together. Stitch ends. Trim seam and corners.
- Turn collar; press along foldline. Baste raw edges together. On outside, pin collar to neck edge of jacket, matching centers and large dots, placing small dot at shoulder seam. Baste. Fold front facing to outside along foldline, forming facing. Stitch neck edge. Trim seam; clip corners and curves.



- Turn facing; press. Baste inner edge of facing to jacket at armhole edges. Press up hem allowance on lower edge of SLEEVE (4). **SLIPSTITCH** in place. With right sides together and raw edges even, pin sleeve to armhole, matching notches, placing small dot at shoulder seam. Stitch. To reinforce the seam, stitch again over previous stitching. Trim seam. Press seam toward sleeve.
  - Stitch front to back at entire underarm seam, matching armhole seams and notches. Clip curves, as necessary.
  - Cut a piece of hook and loop tape, 1-1/2" (3.8cm) long. Separate the tape. Open out facing on right side of jacket. **EDGESTITCH** hook half of tape to outside of facing between the solid lines. On outside, sew buttons to right side of jacket at small dots.
  - Turn facing to outside of jacket along foldline. Stitch across facing along hem marking. Trim facing close to stitching. Trim jacket to within 1/4" (6mm) of inner edge of facing.
  - Turn facing to inside; press, pressing up hem along marking. **SLIPSTITCH** hem in place. On outside, **EDGESTITCH** soft half of tape to outside of left front between the solid lines.
- SKIRT A**
- Make **DART** in SKIRT BACK (6).

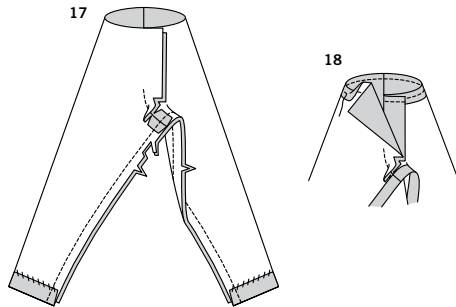
- Stitch SKIRT FRONT (5) to skirt back at side edges; press. On inside, press under upper edge of skirt 1/4" (6mm). Stitch 1/8" (3mm) from pressed edge.
- Stitch center back seam of skirt from lower edge to large dot, back-stitching at dot to reinforce the seam. Cut a piece of hook and loop tape 1" (2.5cm) long. Separate the tape. On outside, **EDGESTITCH** hook half of tape to right skirt back facing with inner edge of tape along centerline. **EDGESTITCH** soft half of tape to left skirt back facing with inner edge of tape along centerline. Fold facing to inside along centerline. **SLIPSTITCH** in place.
- Press up hem allowance on lower edge of skirt. **SLIPSTITCH** in place.

## PANTS B



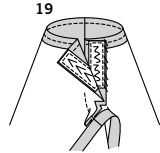
**15.** Press up hem allowance on lower edge of PANTS (7). **SLIPSTITCH** in place.

**16.** Stitch center front and center back seam to large dot, back-stitching at dot to reinforce the seam. Clip curves.

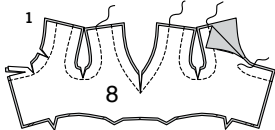


**17.** Stitch front to back at inner leg edge, matching notches. Trim seam.

**18.** Press under upper edge of pants 1/4" (6mm). Stitch 1/8" (3mm) from pressed edge.

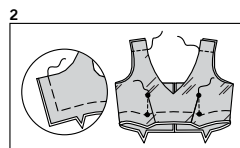


**19.** Cut a piece of hook and loop tape 1" (2.5cm) long. Separate the tape. On outside, **EDGESTITCH** hook half of tape to right pants back facing with inner edge of tape along centerline. **EDGESTITCH** soft half of tape to left pants back facing with inner edge of tape along centerline. **SLIPSTITCH** in place.

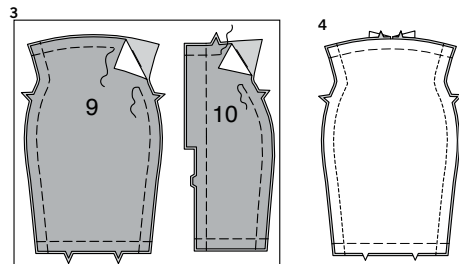


## GOWN C

**1.** With right sides together and raw edges even, pin **BODICE** (8) to bodice lining. Stitch neck and armhole edges, leaving shoulder edges open. Trim seam; clip curves, and to center front.

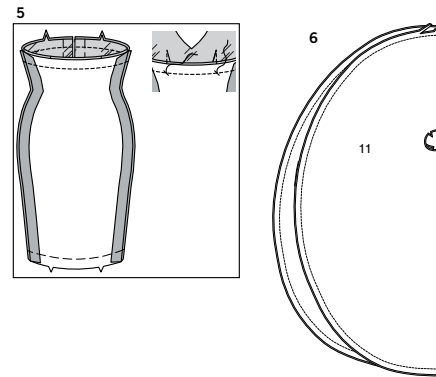


**2.** Turn bodice; press. Baste raw edges together. On inside, make **DARTS**. Stitch front to back at shoulder edges.



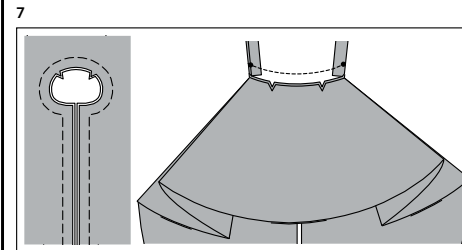
**3.** Pin wrong side of **SKIRT FRONT** (9) overlay to right side of skirt front. Baste raw edges together. Baste **SKIRT BACK** (10) overlay to skirt back in the same manner.

**4.** Stitch skirt front to skirt back at side edges.

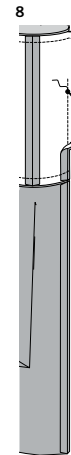


**5.** With right sides together and raw edges even, pin bodice to skirt, matching centers and seams. Stitch. Press seam toward bodice. **TACK** seam in place at darts.

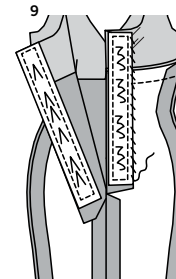
**6.** Cut **FLOUNCE** (11) sections along long center back edge and cut out center piece, as shown. With right sides together and raw edges even, stitch outer edge of founce sections. Trim seam.



**7.** Turn founce; press. Baste raw edges together. With right sides together and raw edges even, pin inner edge of founce to lower edge of skirt, matching centers and notches, placing small dots at side seams. Stitch. Press seam toward founce, pressing founce out.



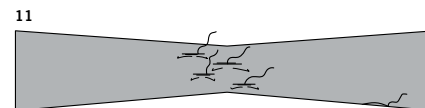
**8.** To reinforce back edge of back at large dot, stitch along seam line for about 1/2" (1.3cm) each side of large dot. Stitch center back seam of back from lower edge of founce to large dot, back-stitching at dot to reinforce the seam. Clip right back to stitching at large dot. Press seam open below the clip.



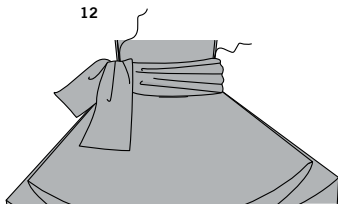
**9.** Cut a piece of hook and loop tape 2-3/8" (6cm) long. Separate the tape. On outside, **EDGESTITCH** hook half of tape to right gown back facing with inner edge of tape along centerline. **EDGESTITCH** soft half of tape to left gown back facing with inner edge of tape along centerline. Fold facing to inside along centerline. **SLIPSTITCH** in place.



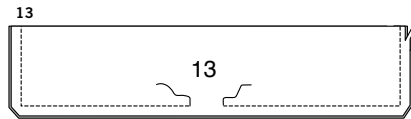
**10.** Fold **SKIRT DRAPE** (12) along foldline with right sides together. Stitch ends and long edge, leaving an opening for turning. Trim seam and corners.



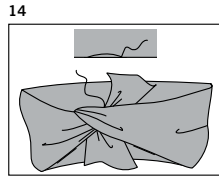
**11.** Turn drape; press. **SLIPSTITCH** opening edges together. Make four lengthwise pleats across drape, bringing center of drape down to 1" (2.5cm), as shown. **TACK** pleats in place invisibly.



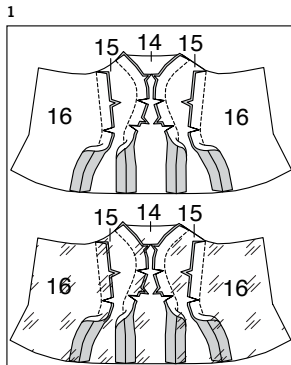
12. Pin drape to gown, having lower edge of drape along flounce seam. **TACK** drape to dress at left side seam, invisibly. Lap and tie ends at right side seam, as shown. **TACK** in place, invisibly.



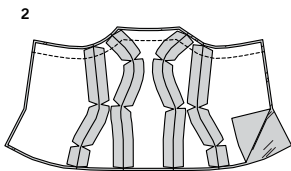
13. Fold SHOULDER WRAP (13) along foldline with right sides together. Stitch ends and long edge, leaving an opening for turning. Trim seam and corners.



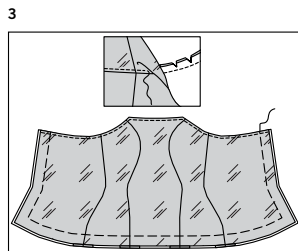
14. Turn wrap; press. **SLIPSTITCH** opening edges together. Cover shoulders of doll, bringing ends to center. Lap ends, as shown. **TACK** ends together, invisibly.



1. Pin BODICE FRONT (14) to BODICE SIDE FRONT (15) sections, matching notches. Pin bodice side front to BODICE BACK (16) sections, matching notches. Stitch seams. Press seams open, clipping to stitching as necessary. Make bodice lining in the same manner as bodice, pressing seams toward front.

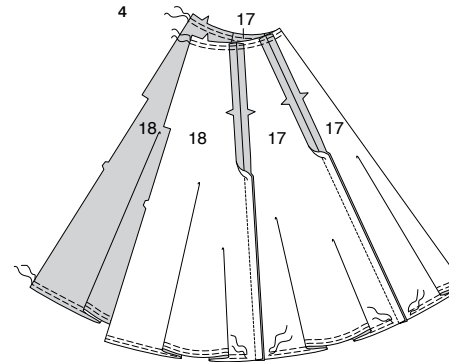


2. With right sides together and raw edges even, pin lining to bodice at upper edge. Stitch.

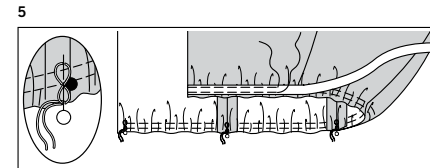


3. **UNDERSTITCH** the lining. Turn lining to inside; press. Baste raw edges together.

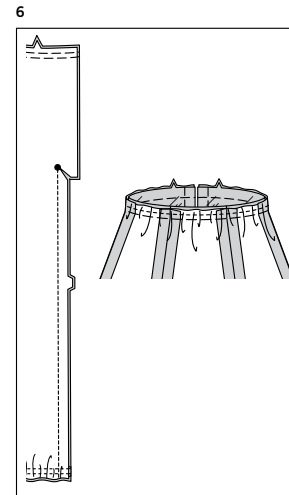
## GOWN D



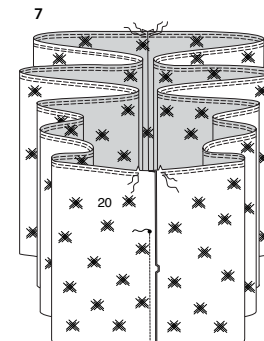
4. Pin SKIRT FRONT (17) to SKIRT SIDE (17) sections. Pin skirt side sections to SKIRT BACK (18) sections. Stitch seams. Press open. **GATHER** upper edge of skirt. **GATHER** lower edge of skirt, breaking stitching at each seam.



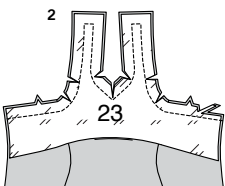
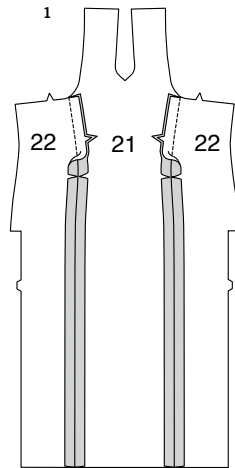
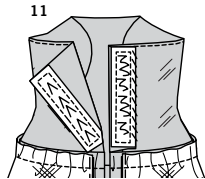
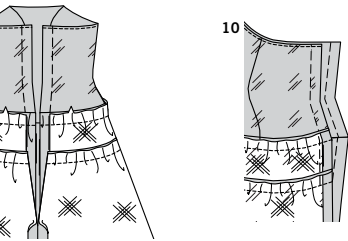
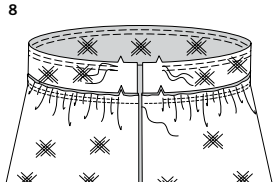
5. To **GATHER** lower edge of skirt down to 9" (23cm) between seams, draw the thread ends through to the underside at one end of a section and anchor them around a pin. At the other end, pull up the bobbin threads until the gathers fit. Distribute fullness evenly. Anchor the threads around a pin. On outside, pin ribbon to lower edge of skirt (over gathers). Stitch close to long edges of ribbon through all thicknesses.



6. Stitch center back edges of skirt from lower edge to large dot, back-stitching at dot to reinforce the seam. Clip right back to stitching at large dot. Press seam open below clip. With right sides together and raw edges even, pin bodice to skirt, matching centers and seams, pulling up gathering stitches to fit. Baste.



7. Stitch center front edges of PETTICOAT (20), and center back edges from lower edge to large dot, back-stitching at dot to reinforce the seam. **GATHER** upper edge of petticoat between back notches, breaking stitching at center front seam.



**8. GATHER** upper edge of edge of PETTICOAT YOKE (19). Pin upper edge of petticoat to lower edge of petticoat yoke, matching centers and notches, pulling up gathering stitches to fit. Stitch. Press seam toward yoke, pressing petticoat out.

**9.** Pin upper edge of yoke to skirt and bodice, matching centers and notches, pulling up gathering stitches of yoke to fit. (Skirt will extend 1/4" (6mm) beyond raw edges of yoke). Baste; stitch through all thicknesses. Press seam toward bodice, pressing bodice out.

**10.** Baste petticoat yoke to gown at back edges.

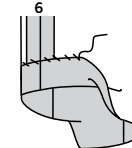
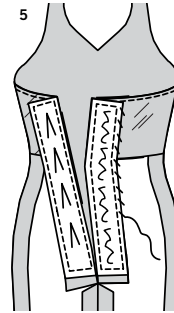
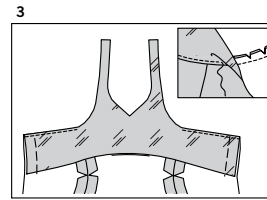
**11.** Cut a piece of hook and loop tape 2-1/4" (5.7cm) long. Separate the tape. On outside, **EDGESTITCH** hook half of tape to right gown back facing with inner edge of tape along centerline. **EDGESTITCH** soft half of tape to left skirt back facing with inner edge of tape along centerline. Fold facing to inside along centerline. **SLIPSTITCH** in place.

## GOWN AND COAT E

### GOWN AND BELT

**1.** With right sides together and raw edges even, pin DRESS FRONT (21) to DRESS BACK (22) at side edges, matching notches. Stitch. Clip to stitching, as necessary. Press seam open.

**2.** With right sides together and raw edges even, pin DRESS FACING (23) to dress at neck, halter, and armhole edges. Stitch. Trim seam; clip curves.

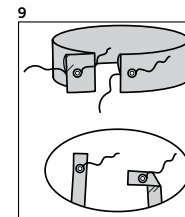
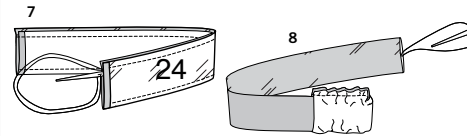


**3. UNDERSTITCH** the facing as far as possible. Turn facing to inside; press, pressing out halter straps. Baste back edges together.

**4.** To reinforce back edge of back at large dot, stitch along seam line for about 1/2" (1.3cm) each side of large dot. Stitch center back seam of back from lower edge to large dot, back-stitching at dot to reinforce the seam. Clip right back to stitching at large dot. Press seam open below the clip.

**5.** Cut a piece of hook and loop tape 2-1/4" (5.7cm) long. Separate the tape. On outside, **EDGESTITCH** hook half of tape to right gown back facing with inner edge of tape along centerline. **EDGESTITCH** soft half of tape to left gown back facing with inner edge of tape along centerline. **SLIPSTITCH** in place.

**6.** Press up hem allowance on lower edge of dress. **SLIPSTITCH** in place. Or if you prefer, stitch 1/4" (6mm) from pressed edge.

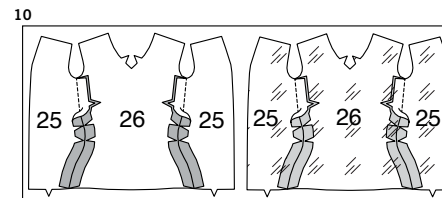


**7.** Press under ends of BELT (24) and belt lining. With right sides together, pin belt to lining with raw edges even. Stitch both long edges. With a needle, attach a strong thread to one end of belt.

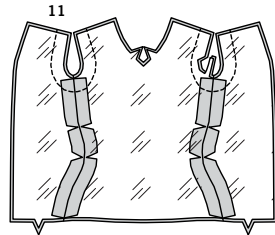
**8.** Draw needle eye forward, turning belt right side out.

**9.** Slip-stitch raw edges together. On outside, sew socket section of snap to right end of belt. On inside, sew knob section to left end. Lap left over right to fasten.  
**Apply snap closure to halter strap in the same manner.**

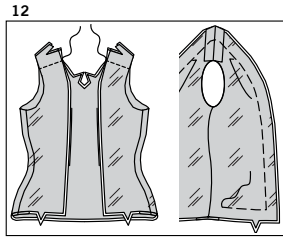
### COAT



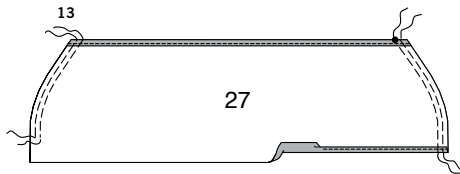
**10.** With right sides together and raw edges even, pin COAT BODICE FRONT (25) to COAT BODICE BACK (26) at side edges, matching notches. Stitch. Clip side to stitching, as necessary. Press seam open. Make coat bodice lining in the same manner, pressing seams toward back.



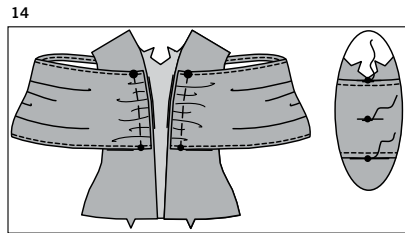
**11.** With right sides together and raw edges even, pin coat bodice to lining at armhole edges. Stitch. Trim seam.



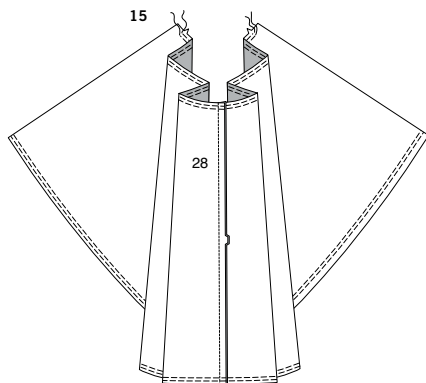
**12.** Turn lining to inside; press. On inside, stitch bodice front to bodice back at shoulder edges. Trim seam. Press seam open. Baste raw edges together.



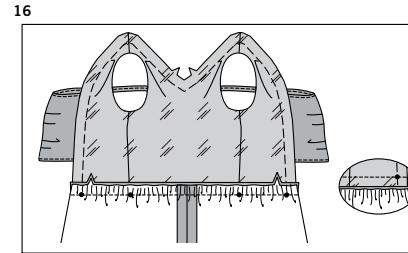
**13.** Press under 1/4" (6mm) hem allowance on straight edges of SHOULDER WRAP (27). To form a narrow hem, tuck under raw edge to meet crease. Press. Stitch hem in place. **GATHER** remaining edges.



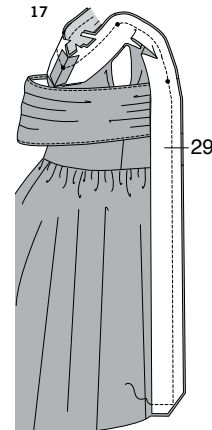
**14.** Pin wrong side of wrap to right side of bodice, matching small and large dots, pulling up gathering stitches to fit. Baste. **TACK** wrap to bodice back, at the small dots, invisibly.



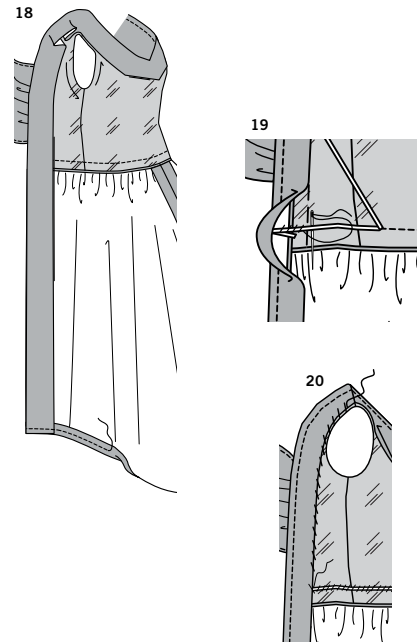
**15.** Pin center back edges of SKIRT (28). Stitch. **GATHER** upper edge between the notches. Ease lower edge.



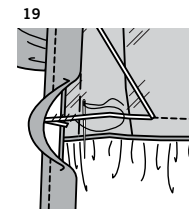
**16.** With right sides together and raw edges even, pin skirt to bodice, matching centers, small dots, and notches, placing inner small dots at side seams, pulling up gathering stitches to fit. Baste; stitch. Press seam toward skirt.



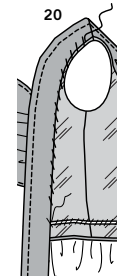
**17.** Stitch center back edges of facing. With right sides together and raw edges even, pin facing to coat at neck and front edges, matching small dots and notches, placing inner small dots at shoulder seams and one at center back. Stitch neck, front, and lower edge. Trim neck and front seam of bodice, leaving skirt seam allowance in place, to stabilize front edge. Trim only the corner on the lower edge.



**18.** Turn facing to inside; press, pressing up hem. Pin hem in place, pulling up ease stitching. Stitch a generous 1/8" (3mm) from pressed edge of hem.



**19.** Cut a piece of wire the length of the waist seam, plus 3/4" (2cm). Fold under ends 3/8" (1cm). Open out the facing at waist seam. Whip-stitch wire to waist seam allowance at seamline.



**20.** **TACK** facing in place, over wire at waist. Turn under facing and **SLIPSTITCH** in place along armhole edges.



# Congrats!

You've completed your sewing adventure

---

**SHARE  
YOUR** LOOK



Post your pattern and tag us  
**@simplicity\_creative\_group** and **#simplicitypatterns**  
for a chance to be featured on our social media.

Look for more PDF patterns at [simplicity.com](https://www.simplicity.com)

Have a question or need help with your sewing project call us at  
1-888-588-2700



Simplicity ©2024 a division of IG Design Group Americas Inc. • Atlanta, GA 30342 USA [www.thedesigngroup.com](https://www.thedesigngroup.com) • All Rights Reserved. [www.simplicity.com](https://www.simplicity.com) • Made in the U.S.A. Fabriqué aux États-Unis.

To be used for individual private home use only and not for commercial or manufacturing purposes. • A usage privé seulement et non à des fins commerciales ou de production en série. • Para uso privado solamente, no se puede utilizar con propósitos de comercialización o de producción en serie.