

S9934

**Simplicity**

**Learn to Sew**

★ Make an elastic casing ★ Stitch & adjust gathers ★ Apply top-stitching



A



B



C



D

Designed and printed in USA.



A,C

Very Easy

**GIRLS' TOPS AND SKIRTS**

**Suggested Fabrics:** Challis, Chambray, Lightweight Denim, Linens, Soft Cottons, Voile.

**Notions:** A: 1½ yds. (1.4m) of ½" (1.3cm) elastic. B: 2¼ yds. (2.4m) of ½" (1.3cm) elastic. C,D: ¼ yd. (0.8m) of 1" (2.5cm) elastic.

Sizes	7	8	10	12	14		
<b>BODY MEASUREMENTS: Select pattern size based on body measurements</b>							
Chest	26	27	28½	30	32	Ins.	
Waist	23	23½	24½	25½	26½	"	
Hip	27	28	30	32	34	"	
Back-neck to waist	11½	12	12¾	13¾	14¼	"	
Height	50	52	56	58½	61	"	
Top A	45**	1½	1½	1½	1½	Yds.	*
	60**	1	1½	1½	1½	"	
Top B	45**	1	1	1½	1½	Yds.	*
	60**	¾	¾	¾	¾	"	
Skirt C	45**	1	1½	1½	1½	Yds.	*
	60**	¾	¾	¾	¾	"	
<b>Contrast (Pockets) - 45, 60** - ½ yd.</b>							
Skirt D	45**	1½	2	2	2½	Yds.	*
	60**	1½	1½	1½	1½	"	

**FINISHED GARMENT MEASUREMENTS (Includes Design and Wearing Ease)**

A Chest	40	41	42½	44	46	Ins.	
B Chest	43½	44½	46	47½	49½	"	
C,D Hip	32	33	35	37	39	"	
<b>Width, lower edge</b>							
Top A	39½	40½	42½	44½	46½	Ins.	
Skirt C	39	40	42	44	46	"	
<b>Finished back length from base of neck</b>							
Top A	11½	13	15	17	19	Ins.	
<b>Top B (sits 2" above waist)</b>							
	7½	9	11	13	15	Ins.	
<b>Finished back length from waist</b>							
Skirt C	11½	12¾	14	15½	16½	Ins.	
Skirt D	22½	23¾	25	26¾	27½	"	

\*with nap \*\*without nap

Très Facile

**HAUTS ET JUPES POUR FILLETES**

**Tissus Conseillés:** Challis, Chambray, Denim léger, Toiles de lin, Cotons souples, Voile.

**Merci:** A: 1.4m d'élastique de 1.3cm. B: 2.4m d'élastique de 1.3cm. C,D: 0.8m d'élastique de 2.5cm.

Tailles	7	8	10	12	14		
<b>MESURES DU CORPS: Choisissez la taille du patron basée sur les mesures du corps</b>							
Poitrine	66	68.5	72.5	76	81.5	cm	
Taille	58.5	59.5	62	65	67.5	"	
Hanches	68.5	71	76	81.5	86.5	"	
Dos du cou à la taille	29	30.5	32.5	34.5	36	"	
Hauteur	127	132	143	149	155	"	
Haut A	115cm*	1.3	1.4	1.5	1.6	m	*
	150cm*	0.9	1.0	1.0	1.1	"	
Haut B	115cm*	0.9	0.9	1.0	1.0	m	*
	150cm*	0.7	0.7	0.7	0.8	"	
Jupe C	115cm*	0.9	1.0	1.0	1.1	m	*
	150cm*	0.6	0.6	0.7	0.7	"	
<b>Contraste (Poches) - 115, 150cm* - 0.5m</b>							
Jupe D	115cm*	1.7	1.7	1.8	1.9	m	*
	150cm*	1.4	1.5	1.5	1.6	"	

**MESURES DES VÊTEMENTS FINI (Motif et aisance de port compris)**

A Poitrine	102	104	108	112	117	cm	
B Poitrine	110	113	117	121	126	"	
C,D Hanches	81	84	89	94	99	"	
<b>Largeur à l'ourlet</b>							
Haut A	100	103	108	113	118	cm	
Jupe C	99	102	107	112	117	"	
<b>Longueur finie – dos, votre nuque à l'ourlet</b>							
Haut A	29	33	38	43	48	cm	
<b>Haut B (repose 2.5cm au-dessus de la taille)</b>							
	18	23	28	33	38	cm	
<b>Longueur finie – dos, taille à l'ourlet</b>							
Jupe C	29	32	36	39	42	cm	
Jupe D	57	60	64	67	70	"	

\*avec sens \*\*sans sens



A



B



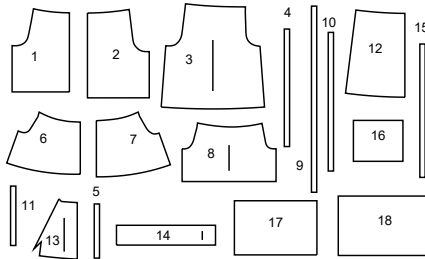
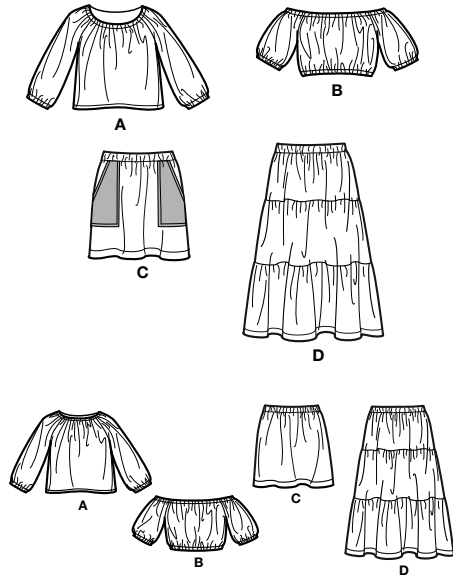
C



D

# Simplicity

Thank you for purchasing this Simplicity pattern. We made every effort to provide you with a high quality product.



- 1 Front-A
- 2 Back-A
- 3 Sleeve-A
- 4 Elastic Guide for Neck-A
- 5 Elastic Guide for Sleeve-A
- 6 Front-B
- 7 Back-B
- 8 Sleeve-B
- 9 Elastic Guide for Neck-B
- 10 Elastic Guide for Lower Edge-B
- 11 Elastic Guide for Sleeve-B
- 12 Skirt Front and Back-C
- 13 Pocket-C
- 14 Casing-C,D
- 15 Guide for Elastic-C,D
- 16 Upper Front and Back-D
- 17 Middle Front and Back-D
- 18 Lower Front and Back-D

## General Directions

### The Pattern

- SYMBOLS**
- ↔ GRAIN LINE Place on straight grain of fabric parallel to selvage
  - ⇓ PLACE SOLID LINE on fold of fabric.
  - - - - - CENTER FRONT OR BACK OF garment.
  - ▽▽▽ NOTCHES
  - ○ DOTS
  - CUTTING LINE
  - LENGTHEN OR SHORTEN LINES

SEAM ALLOWANCE: 5/8" (1.5cm) unless otherwise stated is included but not printed on MULTI-SIZE PATTERNS. Mark your size with colored felt tip pen. See chart on tissue for how to use MULTI-SIZE PATTERNS.

### ADJUST IF NEEDED

Make adjustments before placing pattern on fabric.

**TO LENGTHEN:** Cut pattern between lengthen or shorten lines. Spread pattern evenly, the amount needed and tape to paper.

**TO SHORTEN:** At lengthen or shorten lines, make an even pleat taking up amount needed. Tape in place.

When lengthen or shorten lines are not given, make adjustments at lower edge of pattern.

### Cutting/Marking

#### BEFORE CUTTING:

PRESS pattern pieces with a warm dry iron. PRE-SHRINK fabric by pre-washing washables or steam-pressing non-washables.

CIRCLE your cutting layout.

PIN pattern to fabric as shown in Cutting Layouts.

• FOR DOUBLE THICKNESS: Fold fabric with RIGHT sides together.

• FOR SINGLE THICKNESS: Place fabric RIGHT side up.

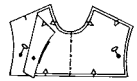
• FOR PILE, SHADED OR ONE WAY DESIGN FABRICS: Use "with nap" layouts

#### AFTER CUTTING:

Transfer markings to WRONG side of fabric before removing pattern. Use pin and chalk method or dressmaker's tracing paper and wheel.

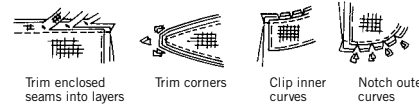
#### To Quick Mark:

- Snip edge of fabric to mark notches, ends of fold lines and center lines.
- Pin mark dots.



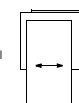
### Sewing

- SEW garment following Sewing Directions.
- PIN or machine-baste seams matching notches.
- STITCH 5/8" (1.5 cm) seams unless otherwise stated.
- PRESS seams open unless otherwise indicated clipping when necessary so seams will lie flat.
- TRIM seams to reduce bulk, as shown below.

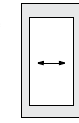


### SPECIAL CUTTING NOTES

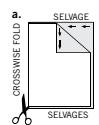
★ If layout shows a piece extending past fold, cut out all pieces except piece that extends.



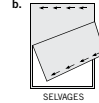
Open out fabric to single thickness. Cut extending piece on RIGHT side of fabric in position shown.



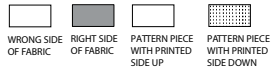
✱ Mark small arrows along both selvages indicating direction of nap or design. Fold fabric crosswise with RIGHT sides together, and cut along fold (a).



Turn one fabric layer around so arrows on both layers go in the same direction. Place RIGHT sides together (b).



## Cutting Layouts

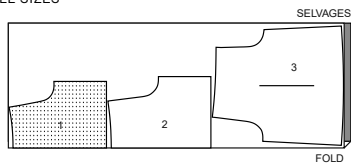


★ SEE SPECIAL CUTTING NOTES

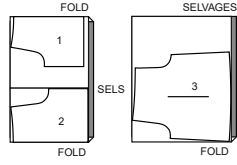
POSITION OF PATTERN PIECES MAY VARY SLIGHTLY ACCORDING TO YOUR PATTERN SIZE

### VIEW A

USE PIECES 1 2 3  
45" (115CM) WITH NAP ALL SIZES

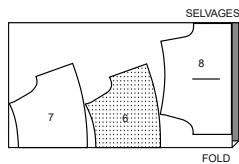


60" (150CM) WITH NAP ALL SIZES

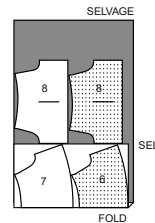


### VIEW B

USE PIECES 6 7 8  
45" (115CM) WITH NAP ALL SIZES

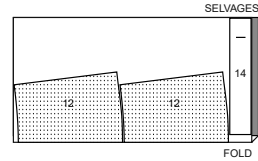


60" (150CM) WITH NAP ALL SIZES

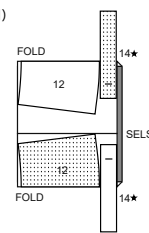


### VIEW C

USE PIECES 12 14  
45" (115CM) WITH NAP ALL SIZES



60" (150CM) WITH NAP ALL SIZES



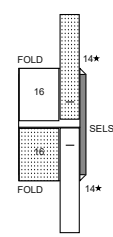
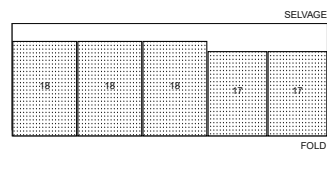
### CONTRAST C (POCKETS)

USE PIECE 13  
45" TO 60" (115CM TO 150CM) WITH NAP ALL SIZES



### VIEW D

USE PIECES 14 16 17 18  
45" (115CM) WITH NAP ALL SIZES



## Sewing Directions

FABRIC KEY: RIGHT SIDE, WRONG SIDE, INTERFACING, LINING, Lining on inside, Lining on outside

Read **General Directions** before you begin.

Sewing methods in **BOLD TYPE** have Sewing Tutorial Video available. Scan QR CODE to watch videos:

### SEWING TUTORIALS



**EASE/GATHER** - see Gathering: "sewing two row gathers" video

**NARROW HEM** - see Hems: "sewing narrow hems" video

**EDGESTITCH** - see Machine Stitches: "how to edgestitch" video

**TOPSTITCH** - see Machine Stitches: "how to topstitch" video

Build your skills viewing short, easy-to-follow videos at [simplicity.com/sewingtutorials](http://simplicity.com/sewingtutorials)

PATTERN PIECES WILL BE IDENTIFIED BY NUMBERS THE FIRST TIME THEY ARE USED.

STITCH 5/8" (1.5CM) SEAMS WITH RIGHT SIDES TOGETHER UNLESS OTHERWISE STATED.

## LEARN TO SEW

### SEWING SUPPLIES

A- Pins, needles, sharp scissors, tape measure, ruler or sewing gauge, seam ripper, water soluble marking pen, and adhesive tape, washable carbon paper, tracing wheel.

### SELECT YOUR SIZE

B- Measure your hip, write below.

Select your size by comparing your hip measurement to hip measurement on envelope flap. Choose the size closest to your measurements.

### PREPARE YOUR PATTERN

SELECT pattern pieces for the view you are making:

Top A – 1,2,3,4 & 5.

Top B – 6,7,8,9,10 & 11.

Skirt C – 12,13,14 & 15.

Skirt D – 14,15,16,17 & 18.

Cut out selected pattern pieces, leaving a tissue margin around all pieces.

C- PRESS tissue with a warm, dry iron.

D- This pattern has more than one size. Once you choose the size you want to sew, it's a good idea to take a felt tip marker or highlighter and trace over the appropriate cutting line to make it even easier to keep track.

Simplicity's **seam and hem allowances** are all included in the pattern piece but are not marked as actual lines. The standard seam allowance is **5/8" (1.5cm)** unless noted differently. Hem allowances vary and depend on each individual garment; hem allowances are noted as text on the pattern tissue.

Before we begin, here's just a few facts about fabric.

Look at a yard of fabric, you'll see that there are two edges that look finished and don't unravel or come apart; each of these edges are called the **selvage**, which is formed during the fabric weaving process.

E- Woven fabrics have two grains: the **lengthwise grain**, which runs parallel to the selvage, and the **crosswise grain**, which runs perpendicular to the selvage.

**Nap** is used to indicate fabrics with a one-way direction because of print designs, or surface texture (corduroy or satin). Have you noticed fabrics that feel smooth when you run your hand across them one way and feel rough in reverse? That's the nap.

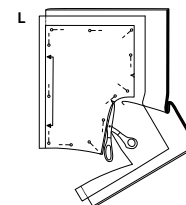
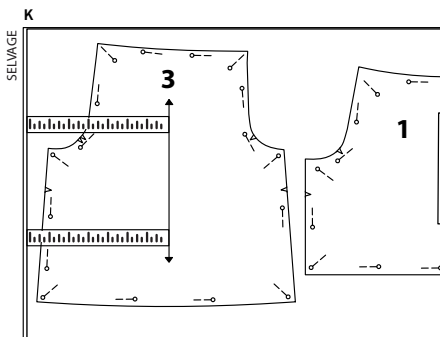
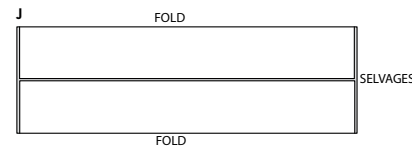
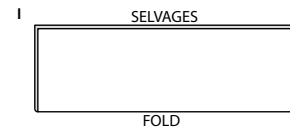
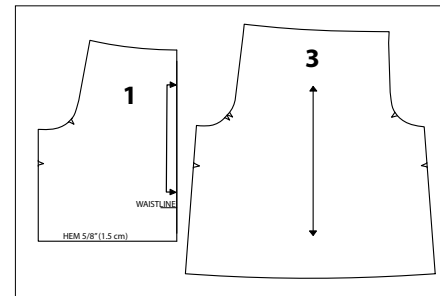
F- It is a good idea to wash fabric before cutting to preshrink fabric. Wash the fabric as you would the finished garment. Press fabric if necessary.

G- Select the layouts for the view, fabric width and garment size you are making. Fold fabric along lengthwise grain of fabric having right sides together and selvages edges even.

Q: What are these other markings on the pattern?

On the pattern pieces, you'll find directions in words and symbols. Look at your pattern and check off each of these items as you find them:

H



**H- Grain line** is the arrow printed on the pattern piece to show where on the fabric each piece should be placed. There are two types of grain lines.

**Straight grain line arrow** indicates a pattern piece that is placed parallel to the selvage edge of your fabric.

**Fold grain line** or **squared-off grain line** indicates a pattern piece that is placed along a folded edge of your fabric.

**Cutting Lines**- are solid lines along the outer edge.

**Notches** are either single or double or triple triangular markings printed in strategic spots along the cutting line on pattern pieces that are used for matching pieces together.

**Dots**- are either small or large circular markings printed on the pattern pieces which are also used for matching pieces together and other construction details.

**Hem**- indicates how much fabric to turn up for hem.

**Waistline**- Solid line marking indicates the waistline position.

### CUTTING LAYOUTS FOR THE TOPS AND SKIRTS

The following indicates the various ways how the fabric is folded in the Cutting Layouts:

I- Lengthwise Fold- Fold the fabric with **RIGHT** sides together and selvages are even.

J- Two Lengthwise Folds- Fold the fabric with **RIGHT** sides together so the selvages meet at or near the center.

**K- For Fold Grain Line**- Lay the pattern pieces on the fabric with the fold grain line along the fold.

**For Straight Grain Line**- Lay the pattern pieces on the fabric with the straight grain line parallel to the selvage. Measure the distance from both ends of the straight grain line arrow on the pattern to the selvages. When it's lined up exactly, pin the pattern at the grain line arrows.

You'll have to turn some of the pattern pieces over and place on fabric with pattern printed side down so that top edge of all pieces lay in one direction. This is necessary if fabric has a design going in one direction.

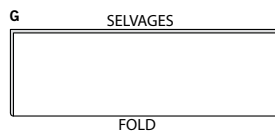
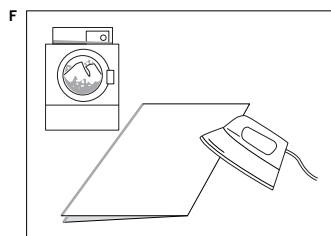
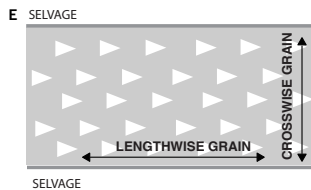
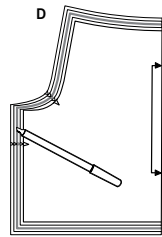
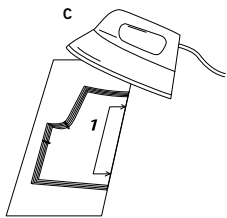
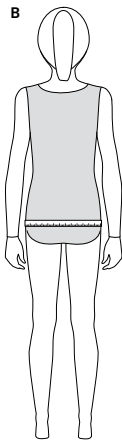
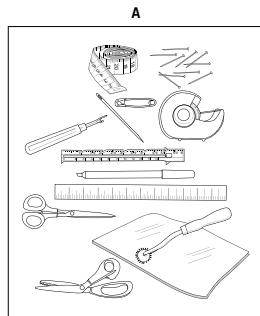
Q: How should I place each pin, and how far apart should they be?

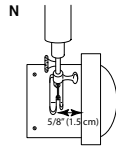
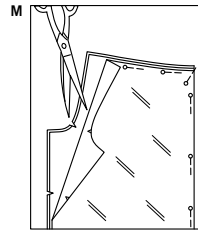
Using straight pins, pin the pattern to the fabric- stick the pin all the way through all thicknesses, pattern tissue and two fabric layers. Bring the pin point back up through all layers; this will keep the layers together. Start pinning at the middle of each side and work your way to the corners, smoothing the tissue as you go to avoid bubbles and wrinkles.

Place each pin just inside the cutting line you'll be using, with each pin in line with the printed line – this will keep them out of the way during cutting. Pins are best placed about 3" (7.5cm) to 4" (10cm) apart, with pins closer together where you have curves or corners.

### CUTTING INSTRUCTIONS

L- Cut with your scissors positioned so that the pinned pattern is on the side that is holding the scissors, and excess fabric is on the other side. Cut along the highlighted cutting line, all around the pattern piece.



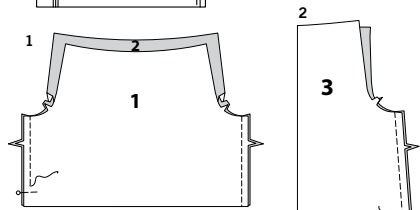


M- Make 1/4" (6mm) snips at edge of fabric at the highlighted notches. This is a quick way to indicate the markings on the pattern.

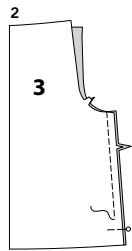
N- REMINDER: Seams are stitched in a 5/8" (1.5cm) seam allowance, unless instructed to use a different amount.

### SEWING INSTRUCTIONS FOR TOP A

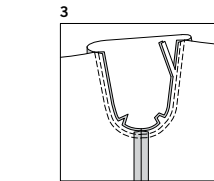
#### FRONT, BACK AND SLEEVE



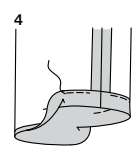
1. With right sides together, pin Front (1) to Back (2), matching notches. Stitch side seams.



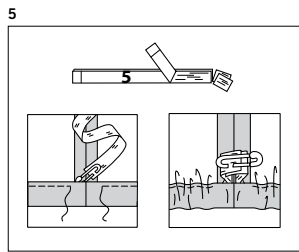
2. Stitch seam in Sleeve (3) as shown.



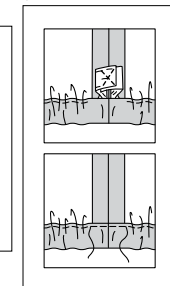
3. With right sides together, pin sleeve into armhole edge, matching notches and seams; baste. Stitch. Stitch again 1/4" (6mm) away in seam allowance. Trim close to second stitching. Turn seam toward sleeve.



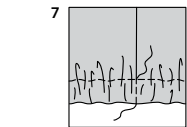
4. Press 7/8" (2.2cm) on lower edge of sleeve to INSIDE, forming casing. Press under 1/4" (6mm) on raw edge. Stitch close to upper edge of casing, leaving an opening to insert elastic.



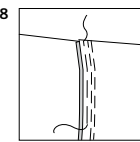
5. Cut two pieces of elastic, each using Elastic guide for sleeve (5) pattern piece. Insert elastic through casing. Overlap ends and hold with a safety pin. Try on top and adjust to fit.



6. Stitch ends of elastic together securely. Stitch opening closed. Distribute fullness evenly.



7. To secure elastic so it won't twist in wearing, stitch through all thicknesses of casing in the groove of each seam.



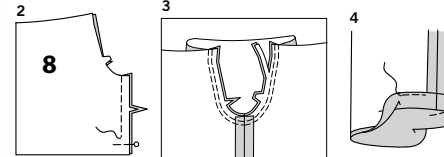
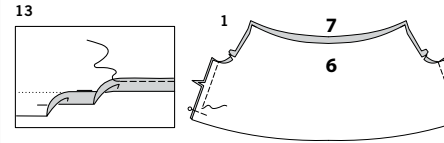
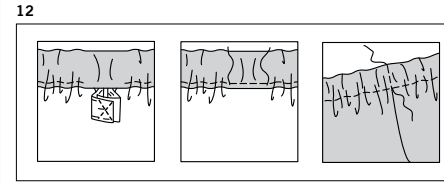
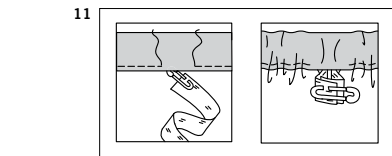
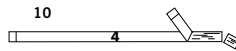
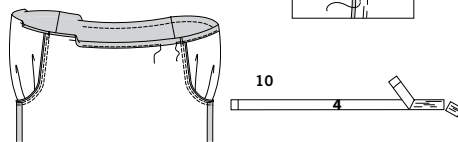
#### NECKLINE CASING

8. To keep elastic from getting stuck in the seam allowances as it's inserted, use fusible web or machine-basting to anchor the seam allowance to top within the casing area. Be sure to remove basting after casing is finished.

9. Press 7/8" (2.2cm) on neck edge of top to INSIDE, forming casing. Press under 1/4" (6mm) on raw edge. Stitch close to lower edge of casing, leaving an opening to insert elastic.

10. Cut a piece of elastic using Elastic guide for neck (4) pattern piece.

11. Insert elastic through casing. Overlap ends and hold with a safety pin. Try on top and adjust to fit.

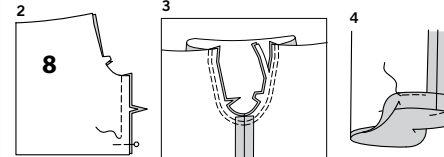


12. Stitch ends of elastic together securely. Stitch opening closed. Distribute fullness evenly. To secure elastic so it won't twist in wearing, stitch through all thicknesses of casing in the groove of each seam.

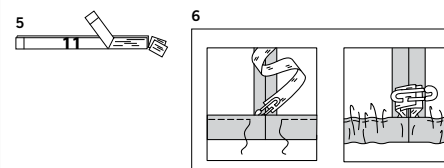
#### HEM

13. Press up 5/8" (1.5cm) hem on lower edge of top. To form **NARROW HEM**, tuck under raw edge to meet crease; press. Stitch hem in place. Great job! Enjoy wearing the top that you have made yourself. Now that you have completed a Learn to Sew project, you are on your way to creating more sewing projects.

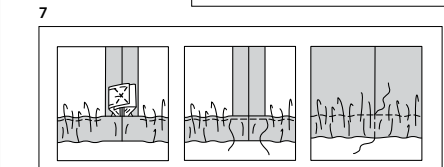
### SEWING INSTRUCTIONS FOR TOP B FRONT, BACK AND SLEEVE



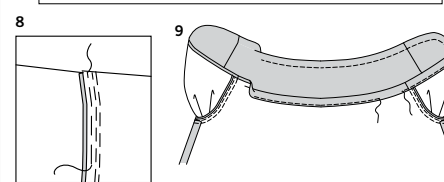
1. With right sides together, pin Front (6) to Back (7), matching notches. Stitch side seams.



2. Stitch seam in Sleeve (8) as shown.



3. With right sides together, pin sleeve into armhole edge, matching notches and seams; baste. Stitch. Stitch again 1/4" (6mm) away in seam allowance. Trim close to second stitching. Turn seam toward sleeve.

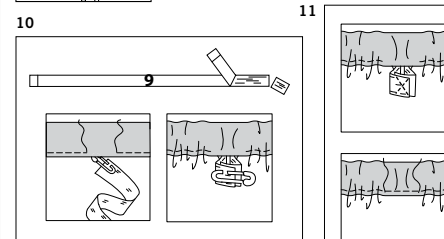


4. Press 7/8" (2.2cm) on lower edge of sleeve to INSIDE, forming casing. Press under 1/4" (6mm) on raw edge. Stitch close to upper edge of casing, leaving an opening to insert elastic.

5. Cut two pieces of elastic, each using Elastic guide for sleeve (11) pattern piece.

6. Insert elastic through casing. Overlap ends and hold with a safety pin. Try on top and adjust to fit.

7. Stitch ends of elastic together securely. Stitch opening closed. Distribute fullness evenly. To secure elastic so it won't twist in wearing, stitch through all thicknesses of casing in the groove of each seam.



#### NECKLINE CASING

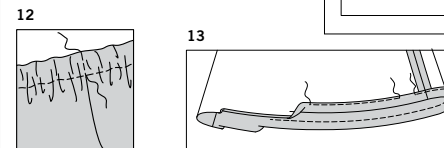
8. To keep elastic from getting stuck in the seam allowances as it's inserted, use fusible web or machine-basting to anchor the seam allowance to top within the casing area. Be sure to remove basting after casing is finished.

9. Press 7/8" (2.2cm) on neck edge of top to INSIDE, forming casing. Press under 1/4" (6mm) on raw edge. Stitch close to lower edge of casing, leaving an opening to insert elastic.

10. Cut a piece of elastic using Elastic guide for neck (9) pattern piece. Insert elastic through casing. Overlap ends and hold with a safety pin. Try on top and adjust to fit.

11. Stitch ends of elastic together securely. Stitch opening closed. Distribute fullness evenly.

12. To secure elastic so it won't twist in wearing, stitch through all thicknesses of casing in the groove of each seam.

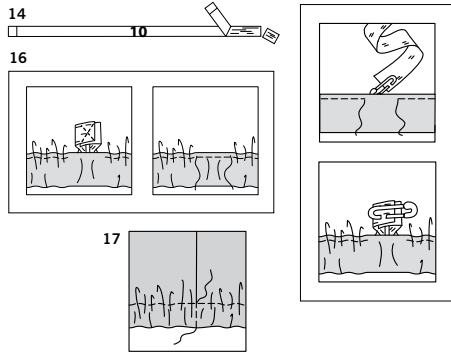


#### LOWER CASING

13. Press 7/8" (2.2cm) on lower edge of top to INSIDE, forming casing. Press under 1/4" (6mm) on raw edge. Stitch close to upper edge of casing, leaving an opening to insert elastic.

S9934

4 of 4



**14.** Cut a piece of elastic using Elastic guide for lower edge (10) pattern piece.

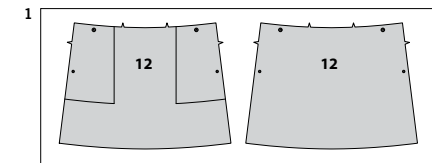
**15.** Insert elastic through casing. Overlap ends and hold with a safety pin. Try on top and adjust to fit.

**16.** Stitch ends of elastic together securely. Stitch opening closed. Distribute fullness evenly.

**17.** To secure elastic so it won't twist in wearing, stitch through all thicknesses of casing in the groove of each seam. Great job! Enjoy wearing the top that you have made yourself. Now that you have completed a Learn to Sew project, you are on your way to creating more sewing projects.

### SEWING INSTRUCTIONS FOR SKIRT C

#### FRONT AND BACK



**1.** You will notice that you have two Skirt front and back (12) sections. One is for the front and the other is for the back. Mark pocket line on front section only.

**2.** Finish slanted edge of Pocket (13) with a zigzag stitch or serge. Turn slanted edge of pocket to inside long foldline; press. Baste in place 1/4" (6mm) from inner edge.

**3.** **TOPSTITCH** slanted edge of pocket along basting and **EDGESTITCH** close to pressed edge. Stitch along seamline on side and lower edge, as shown

**4.** Turn in seam allowance on front and lower edge of pocket, folding in corners diagonally. Press.

**5.** Pin pocket to upper and side edge of skirt front and back section, matching small and large dots, having pressed edges along pocket lines and raw edges even. Baste upper and side edges. (This is skirt front.)

**6.** Stitch pocket close to pressed edges, using presser foot as a guide to keep stitching straight, pivoting at corner. To pivot, leave needle in fabric, lift presser foot and turn fabric. Lower presser foot and continue stitching.

**7.** **EDGESTITCH** and **TOPSTITCH** pocket front and lower edges using a presser foot as a guide for **TOPSTITCHING** to keep stitching straight and evenly spaced.

**8.** With right sides together, pin remaining skirt front and back section to skirt front at side seams. Match the cut edges and notches. Stitch side seams.

**9.** Using an iron, press the stitching to set the stitches. Then open the seam allowance and press the seam open. Check the temperature setting for the fabric you have purchased.

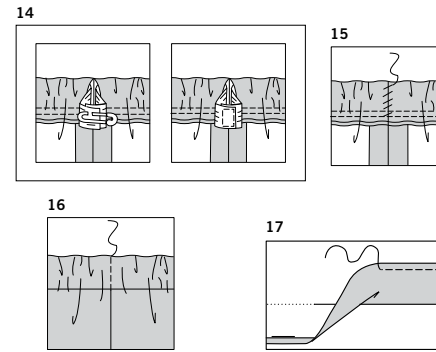
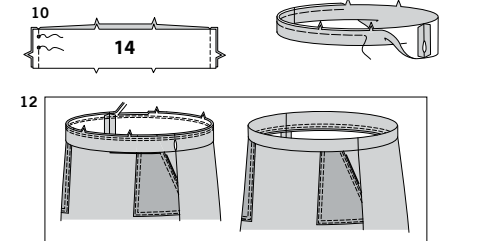
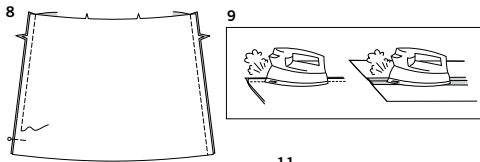
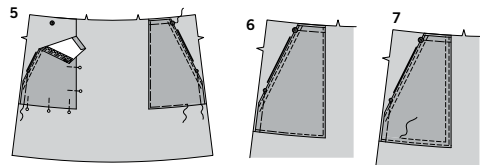
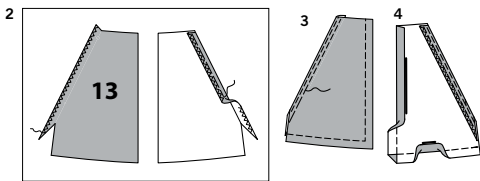
#### CASING AND ELASTIC

**10.** With right sides together, stitch seams of Casing (14), leaving an opening in LEFT side seam between small dots, as shown. Back-stitch at small dots to reinforce seam. Press seam open.

**11.** Fold casing along foldline, with **WRONG** sides together, having raw edges even. Baste raw edges together. The side with the opening is the underside of the casing.

**12.** With the underside of casing facing you, pin casing to skirt, matching centers and side seams. Stitch along seam line. Stitch again 1/4" (6mm) from first stitching within seam allowance. Trim close to second stitching. Press seam toward skirt, pressing casing upward.

**13.** Cut a piece of elastic using Guide for elastic (15) pattern piece.



**14.** Insert elastic through opening in casing. Overlap ends and hold with a safety pin. Try on skirt and adjust to fit. Stitch ends of elastic securely.

**15.** Slipstitch opening edges of casing together. To slipstitch, slide needle through a folded edge, then pick up a thread of underneath fabric. Stitching should be invisible on the outside. Distribute fullness evenly.

**16.** To secure elastic so it won't twist in wearing, stitch through all thicknesses of casing in the groove of each seam.

#### HEM

**17.** Press up 1-1/4" (3.2cm) hem on lower edge of skirt. Press under 1/4" (6mm) on raw edge. Stitch close to inner pressed edge. Great job! Enjoy wearing the skirt that you have made yourself. Now that you have completed a Learn to Sew project, you are on your way to creating more sewing projects.

### SEWING INSTRUCTIONS FOR SKIRT D

#### UPPER FRONT AND BACK

**1.** With right sides together, pin Upper front and back (16) sections, matching notches. Stitch at sides.

#### MIDDLE FRONT AND BACK

**2.** With right sides together, pin Middle front and back (17) sections, matching notches. Stitch at sides.

**3.** To **GATHER** upper edge of middle section, stitch along seam line and 1/4" (6mm) **INSIDE** seam line, using a long machine-stitch.

**4.** Pin upper edge of middle section to lower edge of upper section, matching centers and seams. Adjust gathers. Baste using long running stitches. Stitch. Stitch again 1/4" (6mm) away in seam allowance. Trim close to second stitching. Press seams toward upper section, turning middle section down.

#### LOWER FRONT AND BACK

**5.** With right sides together, pin Lower front and back (18) sections, matching notches. Stitch at ends.

**6.** Press up 5/8" (1.5cm) hem on lower edge of lower section. To form **NARROW HEM**, tuck under raw edge to meet crease; press. Stitch hem in place.

**7.** To gather upper edge of lower section, stitch along seam line and 1/4" (6mm) **INSIDE** seam line, using a long machine-stitch.

**8.** With right sides together, pin upper edge of lower section to lower edge of middle section, placing one seam at center back and ending seams at dots on front. Adjust gathers. Baste using long running stitches. Stitch. Stitch again 1/4" (6mm) away in seam allowance. Trim close to second stitching. Press seams toward middle section, turning lower section down.

#### CASING AND ELASTIC

Prepare and stitch/apply casing to skirt in the same manner as described for SKIRT C; CASING AND ELASTIC. Great job! Enjoy wearing the skirt that you have made yourself. Now that you have completed a Learn to Sew project, you are on your way to creating more sewing projects.



# Congrats!

You've completed your sewing adventure

---

**SHARE  
YOUR** LOOK



Post your pattern and tag us  
**@simplicity\_creative\_group** and **#simplicitypatterns**  
for a chance to be featured on our social media.

Look for more PDF patterns at [simplicity.com](https://www.simplicity.com)

Have a question or need help with your sewing project call us at  
1-888-588-2700



Simplicity ©2024 a division of IG Design Group Americas Inc. • Atlanta, GA 30342 USA [www.thedesigngroup.com](https://www.thedesigngroup.com) • All Rights Reserved. [www.simplicity.com](https://www.simplicity.com) • Made in the U.S.A. Fabriqué aux États-Unis.

To be used for individual private home use only and not for commercial or manufacturing purposes. • A usage privé seulement et non à des fins commerciales ou de production en série. • Para uso privado solamente, no se puede utilizar con propósitos de comercialización o de producción en serie.