

S9933

**Simplicity**

easy-to-sew



A



B



C



D



Designed and printed in USA.



Easy

Facile

**CHILDREN'S AND GIRLS' DRESS WITH SLEEVE VARIATIONS**

**Suggested Fabrics:** Batiks, Calico, Chambray, Cotton Blends, Flannel, Gauze, Gingham, Linen Blends, Poplin, Seersucker, Shirtings.

**Notions: A,B,C,D:** ¼" (1.5cm) lace or novelty trim (opt.); 7½ yds. (6.5m) for Children, 8½ yds. (8.5m) for Girls, one invisible zipper: 14" (36cm) for Children, 18" (46cm) for Girls. **Also for A,C:** ¼" (1cm) elastic: ¼ yd. (0.6m) for Children, ½ yd. (0.6m) for Girls. **Also for B:** ¾" (1cm) elastic: ¼ yd. (0.6m) for Children, ¾ yd. (0.7m) for Girls.

Sizes	3	4	5	6	7	8	10	12	14
-------	---	---	---	---	---	---	----	----	----

**BODY MEASUREMENTS: Select pattern size based on body measurements**

<b>Chest</b>	22	23	24	25	26	27	28½	30	32	Ins.
<b>Waist</b>	20½	21	21½	22	23	23½	24½	25½	26½	"
<b>Hip</b>	—	24	25	26	27	28	30	32	34	"
<b>Back-neck to waist</b>	9	9½	10	10½	11½	12	12¾	13½	14¼	"
<b>Approx. Height</b>	38	41	44	47	50	52	56	58½	61	"
<b>Dress A</b>	45**	2¼	2¾	2½	2¾	3¼	3¾	3¾	4	Yds.
	60**	1¾	1¾	1¾	2	2¾	2½	2¾	2¾	"
<b>Dress B</b>	45**	2¼	2¼	2¼	2¾	3¼	3¼	3¾	3¾	Yds.
	60**	1½	1¾	1¾	1¾	2¾	2¾	2¾	2¾	"
<b>Dress C</b>	45**	2	2¼	2¾	2¾	3¼	3¾	3¾	3¾	Yds.
	60**	1¾	1¾	1¾	2¼	2¾	2¾	2¾	2¾	"
<b>Dress D</b>	45**	1¾	1¾	2	2¼	2¾	2¾	3	3¾	Yds.
	60**	1¾	1¾	1½	1¾	2	2¾	2½	2¾	"

**FINISHED GARMENT MEASUREMENTS (Includes Design and Wearing Ease)**

<b>A,B,C,D Chest</b>	25½	26½	27½	28½	30½	31½	33	34½	36½	Ins.
<b>Width, lower edge</b>										
<b>Dress A,B,C,D (excl. ruffle)</b>	46½	47½	48½	49½	53½	54½	56	57½	59½	Ins.
<b>Finished back length from base of neck</b>										
<b>Dress A,B,C,D (incl. ruffle)</b>	23½	25½	27½	29½	32	33¾	35¾	37¾	39¾	Ins.

\*with nap \*\*without nap

**ROBE AVEC VARIATIONS DE MANCHES POUR ENFANTS ET FILLETES**

**Tissus Conseillés:** Batik, Calicot, Chambray, Cotonnades, Flanelle, Gaze, Vichy, Lin mélangés, Popeline, Seersucker, Shirtings.

**Mercerie: A,B,C,D:** garniture de dentelle ou fantaisie de 1.5cm facultatif: 6.5m pour enfants, 8.5m pour fillettes, 1 fermeture à glissière invisible: 36cm pour enfants, 46cm pour fillettes. **Aussi pour A,C:** d'élastique de 1cm: 0.6m pour enfants, 0.6m pour fillettes. **Aussi pour B:** d'élastique de 1cm: 0.6m pour enfants, 0.7m pour fillettes.

Tailles	3	4	5	6	7	8	10	12	14
---------	---	---	---	---	---	---	----	----	----

**MESURES DU CORPS: Choisissez la taille du patron basée sur les mesures du corps**

<b>Poitrine</b>	56	58	61	64	66	69	73	76	81	cm	
<b>Taille</b>	52	53	55	56	58	60	62	65	67	"	
<b>Hanches</b>	—	61	64	66	69	71	76	81	87	"	
<b>Dos du cou à la taille</b>	23	24	25.5	27	29.5	31	32.5	34.5	36	"	
<b>Taille approx.</b>	97	104	112	119	127	132	142	149	155	"	
<b>Robe A</b>	115cm*	2.1	2.2	2.3	2.4	3.2	3.3	3.4	3.5	3.7	m
	150cm*	1.5	1.6	1.7	1.7	2.2	2.3	2.3	2.4	2.5	"
<b>Robe B</b>	115cm*	1.9	1.9	2.1	2.2	2.9	3.0	3.2	3.3	3.4	m
	150cm*	1.4	1.5	1.5	1.6	1.9	2.2	2.3	2.4	2.5	"
<b>Robe C</b>	115cm*	1.8	1.8	1.9	2.1	2.9	3.0	3.1	3.4	3.4	m
	150cm*	1.5	1.5	1.6	1.7	2.1	2.2	2.3	2.4	2.5	"
<b>Robe D</b>	115cm*	1.6	1.7	1.7	1.8	2.3	2.4	2.5	2.7	2.9	m
	150cm*	1.1	1.3	1.4	1.5	1.7	1.8	2.2	2.2	2.3	"

**MESURES DES VÊTEMENTS FINI (Motif et aisance de port compris)**

<b>A,B,C,D Poitrine</b>	65	67	70	72	77	80	84	88	93	cm
<b>Largeur à l'ourlet</b>										
<b>Robe A,B,C,D (non compris le volant)</b>	118	121	123	126	136	138	142	146	151	m
<b>Longueur finie – dos, votre nuque à l'ourlet</b>										
<b>Robe A,B,C,D (y compris le volant)</b>	60	65	70	75	81	86	91	96	101	m

\*avec sens \*\*sans sens



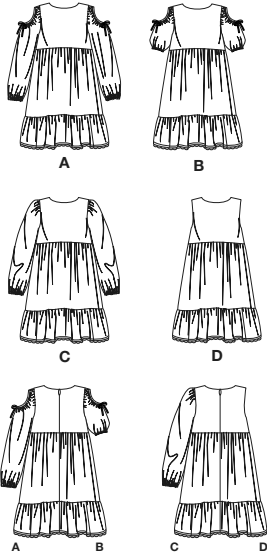
A B



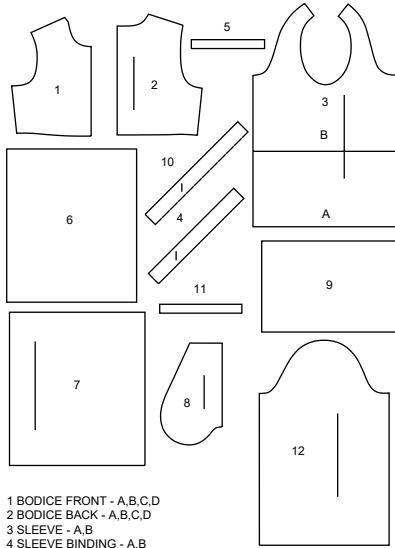
C D

# Simplicity®

Thank you for purchasing this Simplicity pattern. We made every effort to provide you with a high quality product.



12 PIECES



- 1 BODICE FRONT - A,B,C,D
- 2 BODICE BACK - A,B,C,D
- 3 SLEEVE - A,B
- 4 SLEEVE BINDING - A,B
- 5 ELASTIC GUIDE FOR SLEEVE - A,C
- 6 SKIRT FRONT - A,B,C,D
- 7 SKIRT BACK - A,B,C,D
- 8 POCKET - A,B,C,D
- 9 RUFFLE - A,B,C,D
- 10 BOW TIE - A,B
- 11 ELASTIC GUIDE FOR SLEEVE - B
- 12 SLEEVE - C

## General Directions

### The Pattern

- SYMBOLS**
- GRAIN LINE: Place on straight grain of fabric parallel to selvage
  - PLACE SOLID LINE on fold of fabric.
  - CENTER FRONT OR BACK OF garment.
  - NOTCHES
  - DOTS
  - CUTTING LINE
  - LENGTHEN OR SHORTEN LINES

SEAM ALLOWANCE: 5/8" (1.5cm) unless otherwise stated is included but not printed on MULTI-SIZE PATTERNS. Mark your size with colored felt tip pen. See chart on tissue for how to use MULTI-SIZE PATTERNS.

### ADJUST IF NEEDED

Make adjustments before placing pattern on fabric.

**TO LENGTHEN:** Cut pattern between lengthen or shorten lines. Spread pattern evenly, the amount needed and tape to paper.

**TO SHORTEN:** At lengthen or shorten lines, make an even pleat taking up amount needed. Tape in place.

When lengthen or shorten lines are not given, make adjustments at lower edge of pattern.

### Cutting/Marking

#### BEFORE CUTTING:

PRESS pattern pieces with a warm dry iron. PRE-SHRINK fabric by pre-washing washables or steam-pressing non-washables.

CIRCLE your cutting layout.

PIN pattern to fabric as shown in Cutting Layouts.

• FOR DOUBLE THICKNESS: Fold fabric with RIGHT sides together.

• FOR SINGLE THICKNESS: Place fabric RIGHT side up.

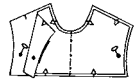
• FOR PILE, SHADED OR ONE WAY DESIGN FABRICS: Use "with nap" layouts

#### AFTER CUTTING:

Transfer markings to WRONG side of fabric before removing pattern. Use pin and chalk method or dressmaker's tracing paper and wheel.

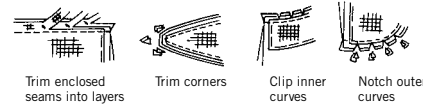
#### To Quick Mark:

- Snip edge of fabric to mark notches, ends of fold lines and center lines.
- Pin mark dots.



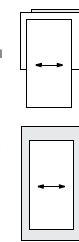
### Sewing

- SEW garment following Sewing Directions.
- PIN or machine-baste seams matching notches.
- STITCH 5/8" (1.5 cm) seams unless otherwise stated.
- PRESS seams open unless otherwise indicated clipping when necessary so seams will lie flat.
- TRIM seams to reduce bulk, as shown below.



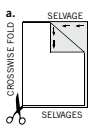
### SPECIAL CUTTING NOTES

★ If layout shows a piece extending past fold, cut out all pieces except piece that extends.

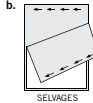


Open out fabric to single thickness. Cut extending piece on RIGHT side of fabric in position shown.

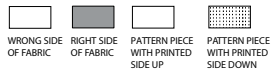
✱ Mark small arrows along both selvages indicating direction of nap or design. Fold fabric crosswise with RIGHT sides together, and cut along fold (a).



Turn one fabric layer around so arrows on both layers go in the same direction. Place RIGHT sides together (b).

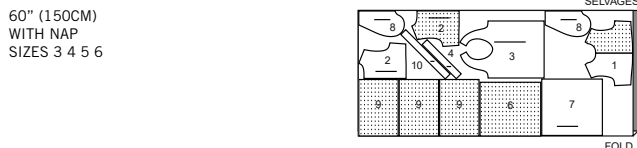
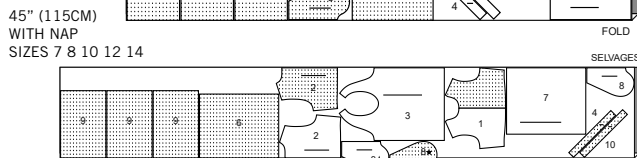
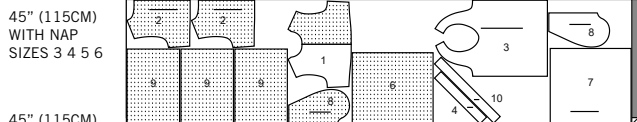


## Cutting Layouts

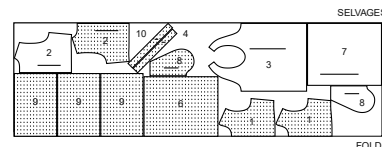


POSITION OF PATTERN PIECES MAY VARY SLIGHTLY ACCORDING TO YOUR PATTERN SIZE

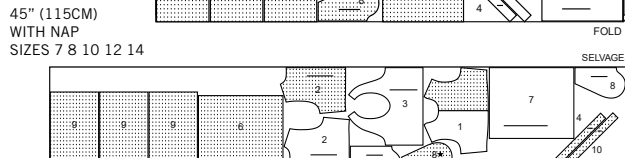
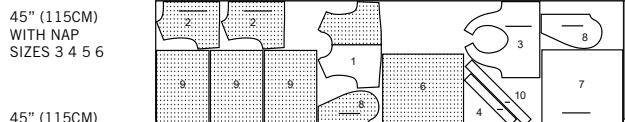
**DRESS A**  
USE PIECES 1,2,3,4,6,7,8,9,10  
CUT ONE OF PIECE 5 FROM ELASTIC



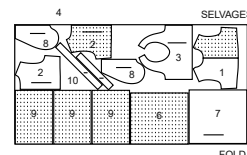
60" (150CM) WITH NAP  
SIZES 7 8 10 12 14



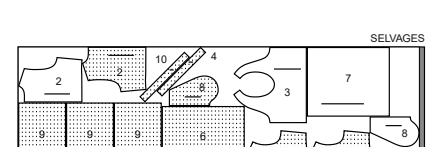
**DRESS B**  
USE PIECES 1,2,3,4,6,7,8,9,10  
CUT ONE OF PIECE 11 FROM ELASTIC



60" (150CM) WITH NAP  
SIZES 3 4 5 6

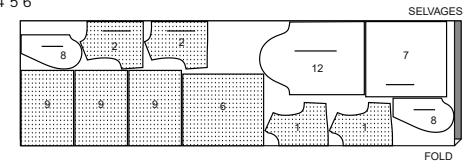


60" (150CM) WITH NAP  
SIZES 7 8 10 12 14

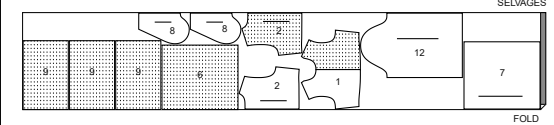


**DRESS C**  
USE PIECES 1,2,6,7,8,9,12  
CUT ONE OF PIECE 5 FROM ELASTIC

45" (115CM) WITH NAP  
SIZES 3 4 5 6



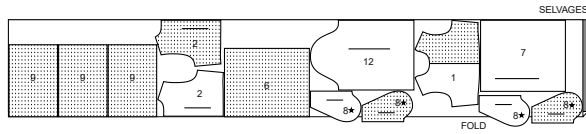
45" (115CM) WITH NAP  
SIZES 7 8 10



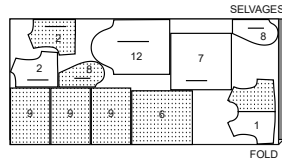
# S9933

2 of 4

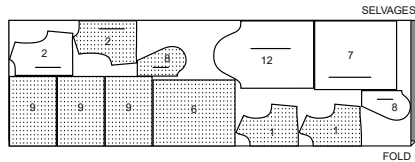
45" (115CM)  
WITH NAP  
SIZES 12 14



60" (150CM)  
WITH NAP  
SIZES 3 4 5 6



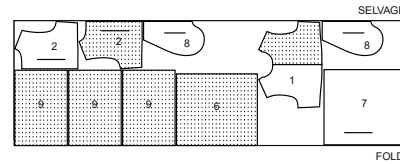
60" (150CM)  
WITH NAP  
SIZES 7 8 10 12 14



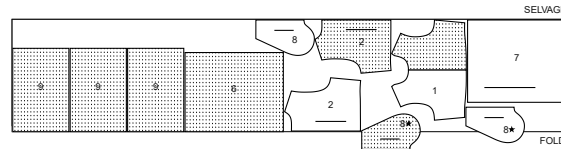
## DRESS D

USE PIECES 1,2,6,7,8,9

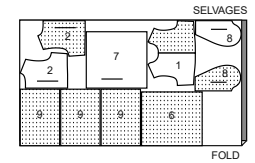
45" (115CM)  
WITH NAP  
SIZES 3 4 5 6



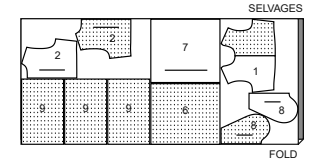
45" (115CM)  
WITH NAP  
SIZES 7 8 10 12 14



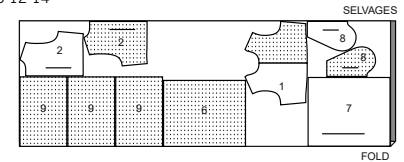
60" (150CM)  
WITH NAP  
SIZES 3 4 5 6



60" (150CM)  
WITH NAP  
SIZES 7 8



60" (150CM)  
WITH NAP  
SIZES 10 12 14



## Sewing Directions

**FABRIC KEY** RIGHT SIDE WRONG SIDE INTERFACING LINING LINING

Read **General Directions** on page 1 before you begin.  
Sewing methods in **BOLD TYPE** have Sewing Tutorial Video available.  
Scan QR CODE to watch videos:

SEWING TUTORIALS



Build your skills viewing short, easy-to-follow videos at [simplicity.com/sewingtutorials](http://simplicity.com/sewingtutorials)

- EASE/GATHER** - see **Gathering**: "sewing two row gathers" video.
- EDGE STITCH** - see **Machine Stitches**: "how to edgestitch" video.
- GATHER** - see **Gathering**: "sewing gathering with yarn" video.
- NARROW HEM** - see **Hems**: "sewing narrow hems" video.
- SLIPSTITCH** - Slide needle through a folded edge, then pick up a thread of underneath fabric.
- STAYSTITCH** - see **Machine Stitches**: "how to staystitching" video.
- TRIM** - see **How to Sew**: "Trim, Clip, and Layer Seams" video.
- UNDERSTITCH** - see **Machine Stitches**: "how to understitch" video.
- PATTERN PIECES WILL BE IDENTIFIED BY NUMBERS THE FIRST TIME THEY ARE USED.**
- STITCH 5/8" (1.5CM) SEAMS WITH RIGHT SIDES TOGETHER UNLESS OTHERWISE STATED.**

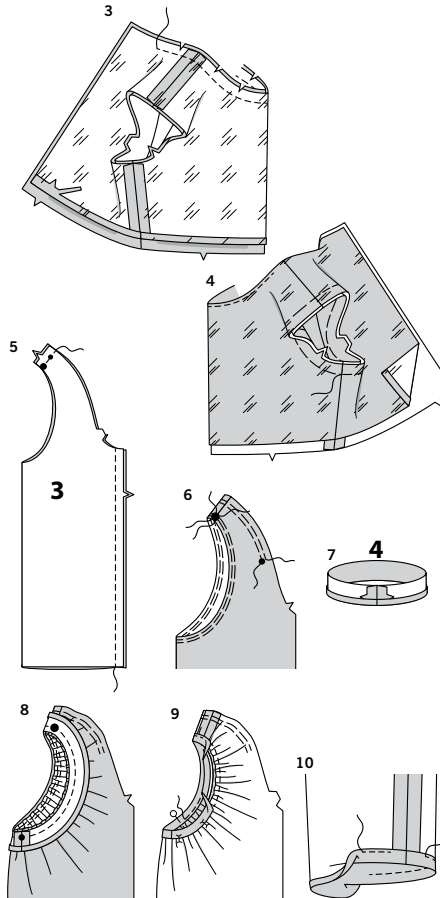
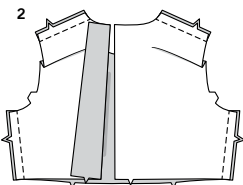
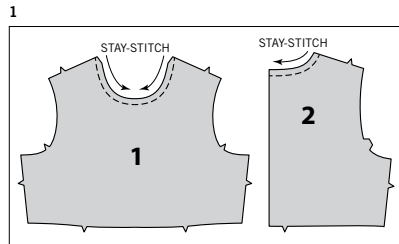
## DRESS A, B, C

*NOTE: You have cut out two bodice front sections and four bodice back sections. One bodice front and two bodice backs will be used for the bodice. The remaining sections will be used as the lining.*

1. **STAYSTITCH** neck edge of BODICE FRONT (1) and BODICE BACK (2) sections in direction of arrows.

## BODICE AND SLEEVES A, B, C

2. Stitch back to front at shoulder and side seams.



3. Stitch seams of bodice lining same as for bodice. Press under 5/8" (1.5cm) on lower edge of lining; trim to 3/8" (1cm). With **RIGHT** sides together, pin lining to bodice, matching centers and shoulder seams.

Stitch neck edge to within 2" (5cm) of back edges. (Remaining neck edge of bodice back will be stitched after the zipper is inserted.)

**TRIM** seam; clip curves. **DO NOT** trim the unstitched neck edge of bodice back.

4. **UNDERSTITCH** neck edge of lining to within 3" (7.5cm) of back opening edges.

Turn lining to **INSIDE**; press. Machine-baste armhole edges together.

5. **SLEEVE A, B** - Stitch shoulders edges of SLEEVE (3) together, matching notches. Stitch underarm seam.

6. **GATHER** upper edge of sleeve between small dots. **GATHER** inner curved edge between large dots, this time stitching 3/8" (1cm) away from raw edge and 1/4" (6mm) away within seam allowance.

7. Stitch notched ends of SLEEVE BINDING (4). Press under 3/8" (1cm) on unmarked edge of binding.

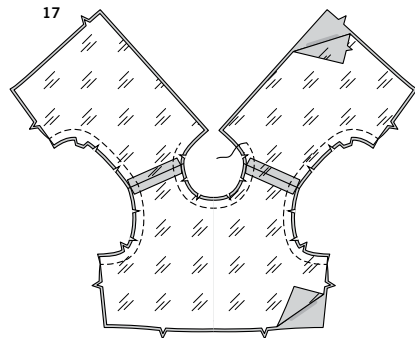
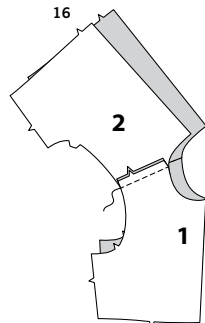
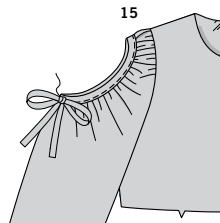
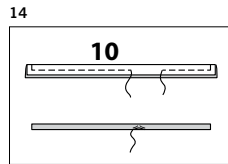
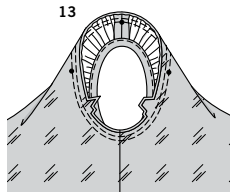
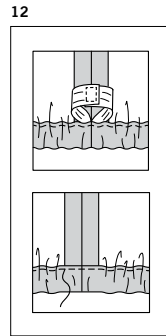
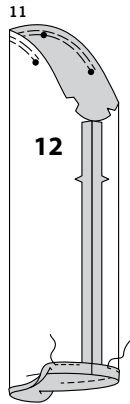
8. With **RIGHT** sides together, pin binding to inner edge, matching large dots and placing seam at small dot. Adjust gathers to fit. To distribute fullness evenly, slide fabric along bobbin threads; baste. Stitch in a 3/8" (1cm) seam.

9. Press binding out, pressing seam toward binding. Turn the pressed edge of binding to **INSIDE** so that it encases the raw edge and just covers the stitching. Pin in place, placing pins on **OUTSIDE**, as shown. On **OUTSIDE**, stitch binding close to seam, catching in pressed edge on **INSIDE**.

10. Press 3/4" (2cm) on lower edge to **INSIDE**, forming casing. Press under 1/4" (6mm) on raw edge. Stitch close to inner edge of casing, leaving an opening to insert elastic.

S9933

3 of 4



**11. SLEEVE C - GATHER** top of sleeve between dots.  
Stitch underarm seam.  
Press 3/4" (2cm) on lower edge to **INSIDE**, forming casing.  
Press under 1/4" (6mm) on raw edge.  
Stitch close to inner edge of casing, leaving an opening to insert elastic.

**12. SLEEVES A, B, C** - Cut a piece of elastic for each sleeve the length of **ELASTIC GUIDE FOR SLEEVE** (5 or 11).  
Insert elastic through casing; adjust to fit. Stitch ends of elastic together, securely.  
Stitch opening closed. Distribute fullness evenly.  
**TIP**-To secure elastic so it won't twist in wearing, stitch through all thicknesses of casing in the groove of seam.

**13.** With **RIGHT** sides together, pin sleeve to armhole edge with center small dot at shoulder seam, matching underarm seams, notches and remaining small dots. Adjust gathers to fit.  
To distribute fullness evenly, slide fabric along bobbin threads; baste. Stitch. Stitch again 1/8" (3mm) from first stitching.  
Trim seam below notches close to stitching.  
Press only the seam allowance.

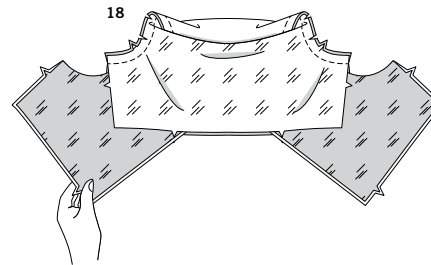
**14. BOW A, B** - Fold **BOW TIE** (10) in half lengthwise, **RIGHT** sides together.  
Stitch 3/8" (1cm) from raw edges, leaving an opening on long edge for turning.  
Turn bow tie right side out.  
**SLIPSTITCH** opening closed; press.

**15.** Fasten tie into a bow.  
Hand-sew to sleeve at small dot.

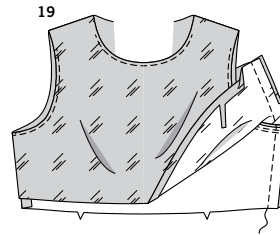
**BODICE D**

**16.** Stitch back to front at shoulder seams.

**17.** Stitch shoulder seams of bodice lining sections.  
With **RIGHT** sides together, pin lining to bodice, matching centers and shoulder seams.  
Stitch neck edge to within 2" (5cm) of back edges. (Remaining neck edge of bodice back will be stitched after the zipper is inserted.)  
Stitch armhole edges.  
**TRIM** seam; clip curves. **DO NOT** trim the unstitched neck edge of bodice back.

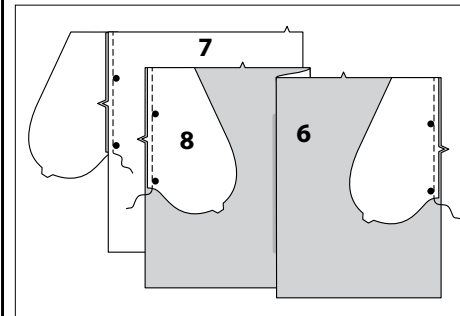


**18.** Turn bodice **RIGHT** side out by pulling each back through front at shoulder seams.

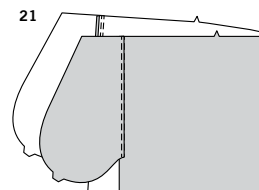


**19. UNDERSTITCH** neck edge of lining to within 3" (7.5cm) of back edges. **UNDERSTITCH** armholes as far as possible.  
Open out lining at side edges. With **RIGHT** sides together, stitch in one continuous stitching, stitch entire side seams from lower edge of bodice to edge of lining, matching seams.  
Turn lining back to **INSIDE**.  
Press, pressing under 5/8" (1.5cm) on lower edge of lining; trim to 3/8" (1cm).

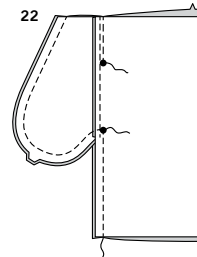
20

**SKIRT A, B, C, D**

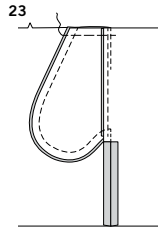
**20.** Pin **POCKET** (8) sections to side edges of **SKIRT FRONT** (6) and **SKIRT BACK** (7) sections, matching large dots, having raw edges even.  
Stitch in a 3/8" (1cm) seam.



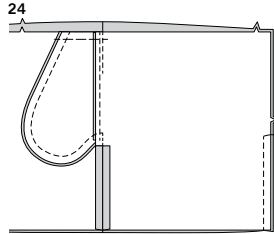
**21.** Press seam toward pocket, pressing pocket out.  
**UNDERSTITCH** front pocket.



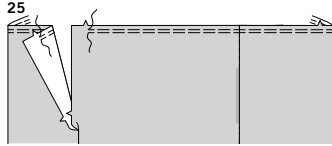
**22.** With **RIGHT** sides together and raw edges even, pin skirt back sections to skirt front at sides, matching large dots.  
Stitch side seams, leaving an opening between large dots, back stitching at large dots to reinforce seam.  
Stitch pocket edges together between side seam and upper edge.



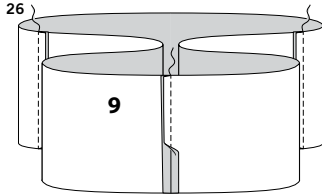
**23.** Clip back seam allowances at ends of pockets. Press seam open below clip. Baste upper raw edges together.



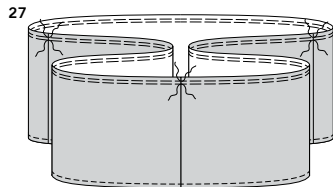
**24.** Pin center back seam of skirt, matching notches. Starting at lower edge, stitch center back seam to 1-3/4"(4.5cm) below notch.



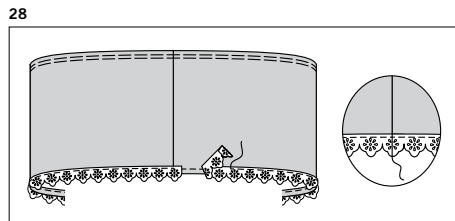
**25.** GATHER upper edge of skirt between notches on back, breaking stitches at side seams if desired.



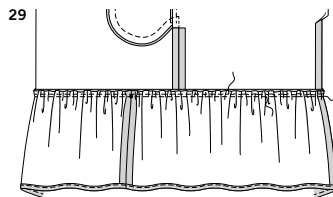
**26.** Stitch ends of RUFFLE (9) sections together, forming a circle.



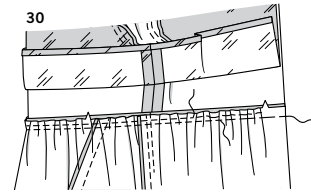
**27.** GATHER upper edge of ruffle, breaking stitches at seams if desired. Make a 5/8"(1.5cm) **NARROW HEM** on lower edge.



**28. OPTIONAL TRIM-** On **OUTSIDE**, lap lower edge of trim 1/4"(6mm) above lower hemmed edge, turning under ends at center back seam. **EDGESTITCH** lower edge of ruffle, stitching through trim. **SLIPSTITCH** ends of trim together.

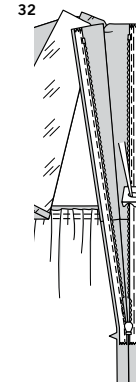
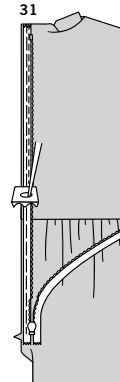


**29.** Pin ruffle to lower edge of skirt, matching centers and placing seams at small dots. Adjust gathers to fit, distributing fullness evenly; baste. Stitch. Stitch again 1/4"(6mm) away in seam allowance. Press ruffle out, pressing seam toward skirt.



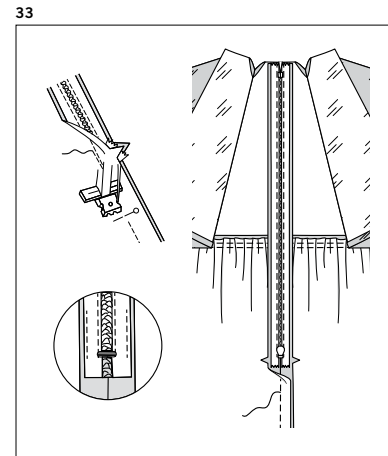
**30.** Pin skirt to bodice, matching centers and side seams, keeping lining out of the way. Pull up gathers to fit; baste. Stitch, being careful not to catch in free edges of lining. Stitch again 1/4"(6mm) away in seam allowance. Press skirt out, pressing seam toward bodice.

**NOTE:** *Stitch the invisible zipper using an invisible zipper foot. Before you begin, be sure to line up your needle with the center of the invisible zipper foot or you may break your needle. When the coils are to the LEFT of the raw edge use the LEFT groove and when the coils are to the RIGHT of the raw edge use the RIGHT groove.*

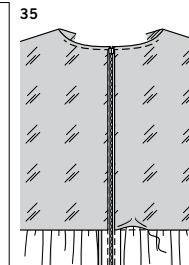
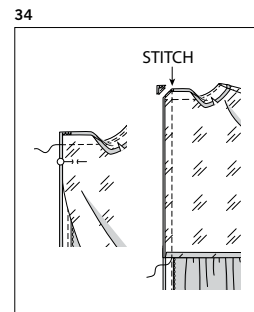


**31.** Keep free upper edges of bodice back lining out of the way. Open zipper and press tape flat on **WRONG** side unrolling the coils. Do not press coils. (Use a low iron setting.) On **OUTSIDE**, pin **RIGHT** side of zipper face down on **RIGHT** side of zipper opening. Have the coil along the seam line, the tape within the seam allowance and the top stop 3/4"(2cm) below upper edge, as shown. Hand-baste along center of tape. Position zipper foot at top of zipper with **RIGHT** groove of foot over coil. Stitch along tape to notch, keeping lining free. Back-stitch to reinforce.

**32.** Pin remaining half of zipper to **LEFT** side of zipper opening in same manner. Make sure upper edges and seams match. Hand-baste along center of the tape. Position zipper foot at top of zipper with **LEFT** groove over coil. Stitch along tape to the notch. Back-stitch to reinforce.



**33.** Close zipper and check that it is invisible from the **OUTSIDE**. Pull free ends of zipper tape away from seam allowance. Pin remaining center back seam together below zipper. Position zipper foot all the way to the **LEFT** so the needle goes down through the outer notch of the foot. Start stitching seam 1/4"(6mm) above lowest stitch and slightly to the **LEFT**. Stitch remainder of seam connecting to previous stitching. If you prefer, open out each seam allowance at end of zipper and stitch tape to seam allowance.



**34.** Turn back lining to **OUTSIDE**. Open out center back opening edge of dress, rolling zipper teeth away from opening edge. With **RIGHT** sides together, pin lining to dress, matching centers back. Stitch remaining upper neck edge, connecting to previous stitching. **TRIM** seam; clip curves. **DO NOT** trim center back edges. Using an adjustable zipper foot, stitch center back edges in a 1/2" (1.3cm) seam.

**35. UNDERSTITCH** remaining back edge. Turn lining back in place; press. **SLIPSTITCH** pressed edge of lining over waistline seam.



# Congrats!

You've completed your sewing adventure

---

**SHARE  
YOUR** LOOK



Post your pattern and tag us  
**@simplicity\_creative\_group** and **#simplicitypatterns**  
for a chance to be featured on our social media.

Look for more PDF patterns at [simplicity.com](https://www.simplicity.com)

Have a question or need help with your sewing project call us at  
1-888-588-2700



Simplicity ©2024 a division of IG Design Group Americas Inc. • Atlanta, GA 30342 USA [www.thedesigngroup.com](https://www.thedesigngroup.com) • All Rights Reserved. [www.simplicity.com](https://www.simplicity.com) • Made in the U.S.A. Fabriqué aux États-Unis.

To be used for individual private home use only and not for commercial or manufacturing purposes. • A usage privé seulement et non à des fins commerciales ou de production en série. • Para uso privado solamente, no se puede utilizar con propósitos de comercialización o de producción en serie.