

S9932

Simplicity®



Designed and printed in USA.

Average

TODDLERS' DRESS, TOP AND PANTS

Suggested Fabrics: Challis, Chambray, Lightweight Denim, Linens, Poplin, Soft Cottons. **Interfacing:** Lightweight Fusible.

Notions: **A,B:** One $\frac{3}{4}$ " (2cm) button. **C:** $1\frac{1}{2}$ yds. (1.2m) of 1" (2.5cm) elastic.

Sizes	$\frac{1}{2}$	1	2	3	4	
BODY MEASUREMENTS: Select pattern size based on body measurements						
Chest	19	20	21	22	23	Ins.
Waist	19	19½	20	20½	21	"
Hip	28	31	34	37	40	"
Approx. Height	26½	31	35	38	41	"
Dress A	45**	1	1½	1¾	1¾	Yds.
60**	¾	¾	1	1	1½	"

Interfacing A,B - 20" - $\frac{1}{4}$ yd.

Top B	45**	¾	¾	¾	1	1	Yds.
60**	¾	¾	¾	¾	¾	¾	"

Pants C	45, 60**	¾	¾	¾	¾	¾	Yds.
---------	----------	---	---	---	---	---	------

FINISHED GARMENT MEASUREMENTS (Includes Design and Wearing Ease)

Width, lower edge						
Dress A,B	49	50	51	52	53	Ins.
Width, each leg						
Pants C	11½	12	12½	13	13½	Ins.
Finished back length from base of neck						
Dress A	15	17	19	21	23	Ins.
Top B	9	10½	12	13½	15	"
Finished side length from waist						
Pants C	17½	19	20½	22	23½	Ins.

*with nap **without nap

Moins Facile

ROBE, HAUT ET PANTALON POUR PETITS ENFANTS

Tissus Conseillés: Challis, Chambray, Denim léger, Toiles de lin, Popeline, Cotons souples. **Entoilage:** Thermocollant léger.

Mercerie: **A,B:** 1 bouton de 2cm. **C:** 1.2m d'élastique de 2.5cm.

Tailles	$\frac{1}{2}$	1	2	3	4	
MESURES DU CORPS: Choisissez la taille du patron basée sur les mesures du corps						
Poitrine	48	51	53	56	58	cm
Taille	48	50	51	52	53	"
Hanches	71	79	86	94	102	"
Taille approx.	67	79	89	97	104	"
Robe A	115cm*	0.9	1.0	1.1	1.3	m
150cm*	0.8	0.8	0.9	0.9	1.0	"

Entoilage A,B - 51cm - 0.2m

Haut B	115cm*	0.7	0.8	0.8	0.9	0.9	m
150cm*	0.6	0.6	0.7	0.7	0.7	0.7	"

Pantalon C	115, 150cm*	0.7	0.7	0.7	0.8	0.8	m
------------	-------------	-----	-----	-----	-----	-----	---

MESURES DES VÊTEMENTS FINI (Motif et aisance de port compris)

Largeur à l'ourlet						
Robe A,B	124	127	130	132	135	cm
Largeur, chaque jambe						
Pantalon C	29	30	32	33	34	cm
Longueur finie -- dos, votre nuque à l'ourlet						
Robe A	38	43	48	53	58	cm
Haut B	23	27	30	34	38	"
Longueur finie -- côté, taille à l'ourlet						
Pantalon C	44	48	52	56	60	cm

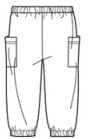
*avec sens **sans sens



A



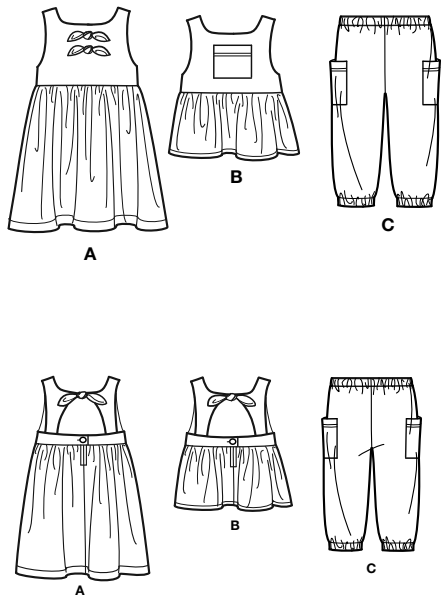
B



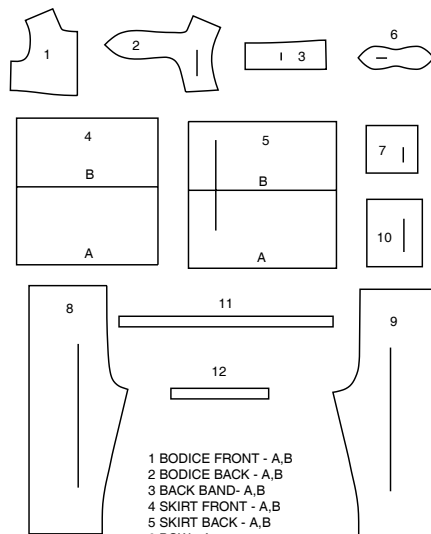
C

Simplicity®

Thank you for purchasing this Simplicity pattern.
We made every effort to provide you with a high quality product.



12 PIECES



- 1 BODICE FRONT - A,B
2 BODICE BACK - A,B
3 BACK BAND - A,B
4 SKIRT FRONT - A,B
5 SKIRT BACK - A,B
6 BOW - A
7 POCKET - B
8 FRONT - C
9 BACK - C
10 POCKET - C
11 ELASTIC GUIDE FOR WAIST - C
12 ELASTIC GUIDE FOR LEG - C



www.simplicity.com



info@simplicity.com



1-888-588-2700

General Directions

The Pattern

- SYMBOLS**
- GRAIN LINE Place on straight grain of fabric parallel to selvage
 - PLACE SOLID LINE on fold of fabric.
 - CENTER FRONT OR BACK of garment.
 - NOTCHES
 - DOTS
 - CUTTING LINE
 - LENGTHEN OR SHORTEN LINES

SEAM ALLOWANCE: 5/8" (1.5cm) unless otherwise stated is included but not printed on MULTI-SIZE PATTERNS. Mark your size with colored felt tip pen. See chart on tissue for how to use MULTI-SIZE PATTERNS.

ADJUST IF NEEDED
Make adjustments before placing pattern on fabric.

TO LENGTHEN:
Cut pattern between lengthen or shorten lines. Spread pattern evenly, the amount needed and tape to paper.

TO SHORTEN:
At lengthen or shorten lines, make an even pleat taking up amount needed. Tape in place.

When lengthen or shorten lines are not given, make adjustments at lower edge of pattern.

Cutting/Marking

BEFORE CUTTING:
PRESS pattern pieces with a warm dry iron. PRE-SHRINK fabric by pre-washing washables or steam-pressing non-washables.

CIRCLE your cutting layout.

PIN pattern to fabric as shown in Cutting Layouts.

• FOR DOUBLE THICKNESS: Fold fabric with RIGHT sides together.

• FOR SINGLE THICKNESS: Place fabric RIGHT side up.

• FOR PILE, SHADED OR ONE WAY DESIGN FABRICS: Use "with nap" layouts

AFTER CUTTING:
Transfer markings to WRONG side of fabric before removing pattern. Use pin and chalk method or dressmaker's tracing paper and wheel.

To Quick Mark:

- Snip edge of fabric to mark notches, ends of fold lines and center lines.
- Pin mark dots.



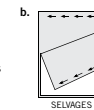
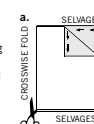
SPECIAL CUTTING NOTES

★ If layout shows a piece extending past fold, cut out all pieces except piece that extends.

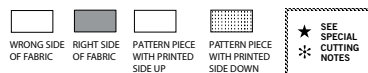
Open out fabric to single thickness. Cut extending piece on RIGHT side of fabric in position shown.

✱ Mark small arrows along both selvages indicating direction of nap or design. Fold fabric crosswise with RIGHT sides together, and cut along fold (a).

Turn one fabric layer around so arrows on both layers go in the same direction. Place RIGHT sides together (b).



Cutting Layouts

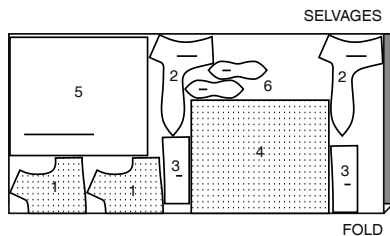


POSITION OF PATTERN PIECES MAY VARY SLIGHTLY ACCORDING TO YOUR PATTERN SIZE

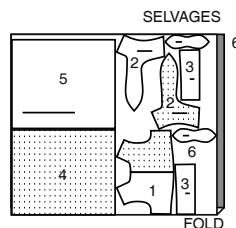
DRESS A

USE PIECES 1 2 3 4 5 6

45" (115CM)
WITH NAP
ALL SIZES



60" (150CM)
WITH NAP
ALL SIZES



INTERFACING A,B

USE PIECE 3

20" (51CM)
ALL SIZES

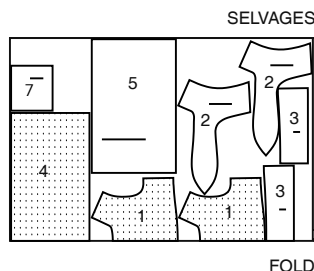


TOP B

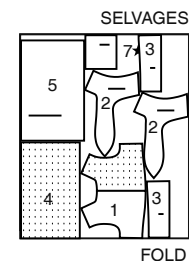
USE PIECES 1 2 3 4 5 7

CUT ONE OF PIECE 7

45" (115CM)
WITH NAP
ALL SIZES



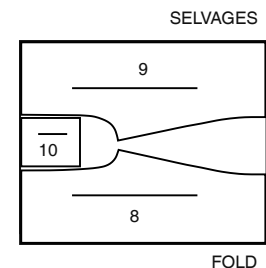
60" (150CM)
WITH NAP
ALL SIZES



PANTS C

USE PIECES 8 9 10

45" OR 60" (115CM OR 150CM)
WITH NAP
ALL SIZES

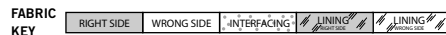


SEWING TUTORIALS



Build your skills viewing short, easy-to-follow videos at simplicity.com/sewingtutorials

Sewing Directions



Read **General Directions** on page 1 before you begin.

Sewing methods in **BOLD TYPE** have Sewing Tutorial Video available. Scan QR CODE to watch videos:

EASE/GATHER - See Gathering: "sewing two row gathers" video.

NARROW HEM - See Hems: "sewing narrow hems" video.

SLIPSTITCH - See Hand Stitches: "how to slipstitch" video.

UNDERSTITCH - See Machine Stitches: "how to understitch" video.

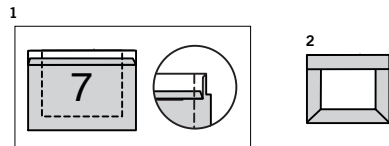
PATTERN PIECES WILL BE IDENTIFIED BY NUMBERS THE FIRST TIME THEY ARE USED.

STITCH SEAMS WITH RIGHT SIDES TOGETHER UNLESS OTHERWISE STATED.

DRESS A, TOP B

NOTE: Under each sub-heading, the first view will be illustrated, unless otherwise illustrated.

POCKET B



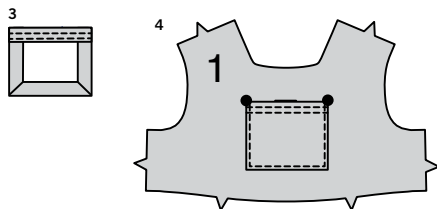
1. Press under 1/4" (6mm) on upper edge of POCKET (7). Turn upper edge to OUTSIDE along foldline, forming facing. Stitch along seam line on raw edges. Trim seam allowance in the facing area to 1/4" (6mm).

2. Turn corners RIGHT side out, turning facing to the WRONG side. Press, pressing under raw edges along stitching.

3. Stitch facing close to inner edge. Stitch again 1/4"(6mm) above first stitching.

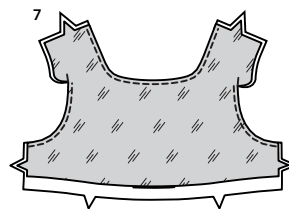
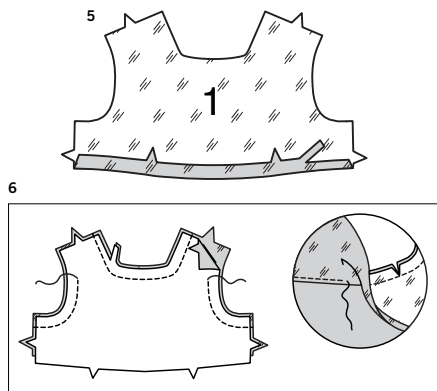
4. On OUTSIDE, pin pocket to one BODICE FRONT (1) section, matching dots. Stitch close to sides and lower edge. (Remaining bodice front section will be used as lining.)

BODICE FRONT AND LINING A,B



5. Press under 5/8"(1.5cm) on lower edge of one BODICE FRONT (1) section. Trim pressed edge to 3/8"(1cm). (This bodice front section will be used as lining.)

6. With RIGHT sides together, pin bodice front to bodice front lining, matching notches and centers. Stitch neck edge. Stitch armhole edges from side seam to about 2"(5cm) below shoulder seam line. Trim seams. **UNDERSTITCH** lining as far as possible.



7. Turn lining to inside; press.

BODICE BACK AND LINING

8. For each bodice back, pin two BODICE BACK (2) sections, right sides together, matching notches and dots. Stitch neck edge, continuing stitching around bow section to lower edge. Stitch armhole edge from lower edge to about 2"(5cm) below shoulder seam line. Trim seams. (Wrong side of bodice back will be used as lining.)

9. Turn lining to INSIDE; press. Baste lower edges together.

10. Open out lining at shoulders. Pin bodice front to each bodice back at shoulders, matching notches; pin lining edges together. Stitch in one continuous seam.

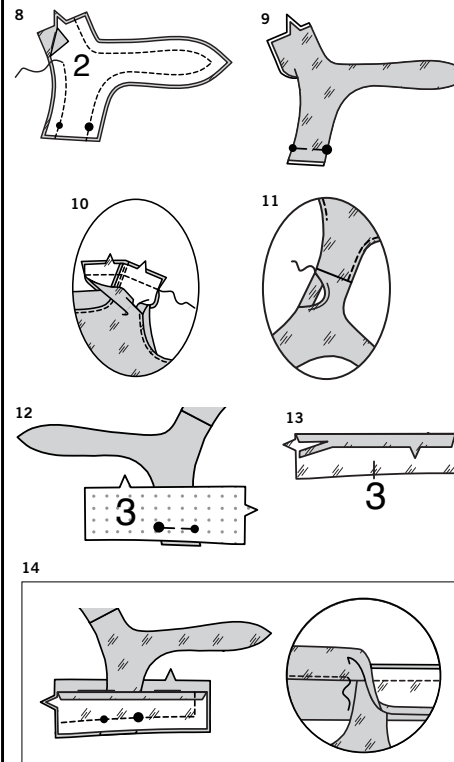
11. Turn lining down, turning in remaining armhole edges along seam lines; press. **SLIPSTITCH** pressed edges together.

BACK BAND AND LINING

12. Pin one interfaced BACK BAND (3) section to lower edge of each bodice back, matching small and large dots, having raw edges even. Baste. (Uninterfaced back band sections will be used as lining.)

13. Press under 5/8"(1.5cm) on lower edge of back band LINING (3). Trim pressed edge to 3/8"(1cm).

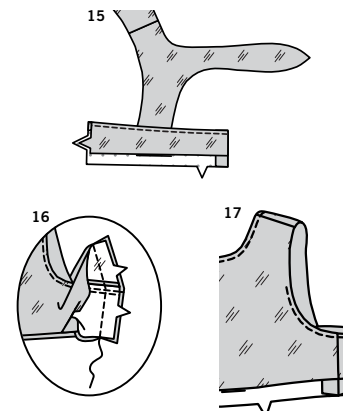
14. Pin lining to back band, right sides together (over bodice back), matching small and large dots, having raw edges even. Baste. Stitch back band along upper and back edges. Trim seams. **UNDERSTITCH** band lining as far as possible.



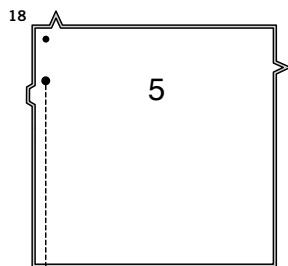
15. Turn lining to INSIDE; press.

16. Open out pressed edges of lining at sides. With RIGHT sides together, pin bodice front to back band at sides, matching notches and seams; then pin bodice front lining to back band lining. Stitch in one continuous seam.

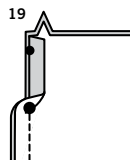
17. Turn lining down; press. Turn pressed edge of lining to INSIDE again.



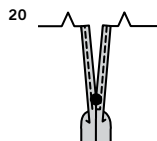
SKIRT



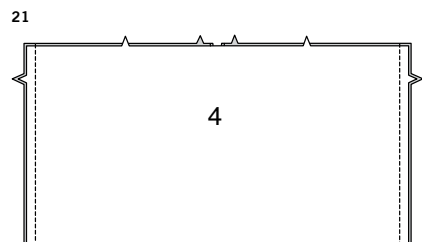
- 18.** Pin SKIRT BACK (5) sections, right sides together, matching notches and dots. Stitch center back seam, from lower edge to large dot.



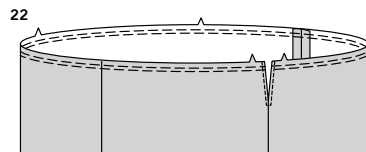
- 19.** Press under 5/8" (1.5cm) on back opening edges of skirt above large dot.



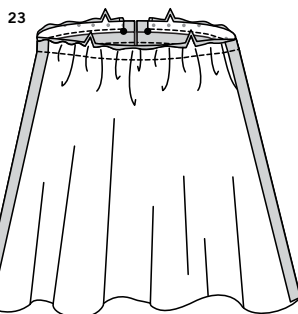
- 20.** To form **NARROW HEM**, tuck under raw edge to meet crease; press. Stitch hem in place, squaring stitching below dot.



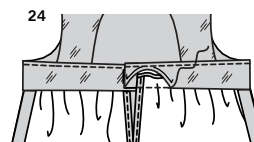
- 21.** Stitch SKIRT FRONT (4) to skirt back at sides.



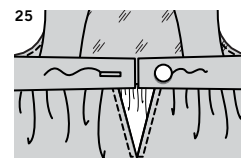
- 22.** To **GATHER** upper edge of skirt, stitch along seam line and 1/4" (6mm) INSIDE seam line, using a long machine-stitch.



- 23.** Keeping lining free, pin skirt to bodice, right sides together, matching notches, centers, side seams and small dots.
NOTE: Back bands will be extend beyond skirt opening edges. Adjust gathers. Baste; stitch. Trim seams.



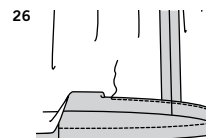
- 24.** Press seams toward back bodice, continuing to back edges.
SLIPSTITCH pressed edge of lining over seam and extension edges together.



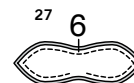
FINISHING

- 25.** Make buttonhole in left back band at marking.
Lap left band over right, matching centers. Using buttonhole as guide, make button marking on outside of right back band. Sew button at marking.

VIEW A



- 26.** Press up 1-1/4" (3.2cm) hem on lower edge of dress. Press under 1/4" (6mm) on raw edge. Stitch close to inner pressed edge.



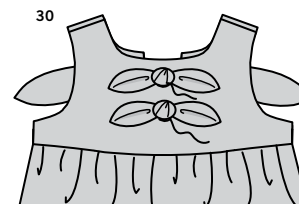
- 27.** For each bow, pin two BOW (6) sections, right sides together. Stitch in a 1/4" (6mm) seam, leaving an opening for turning. Trim corners.



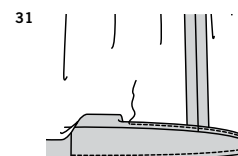
- 28.** Turn right side out; press. **SLIPSTITCH** opening edges.



- 29.** Tie a knot at center line on bow.



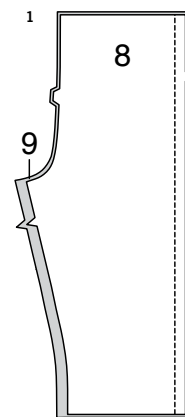
- 30.** Tack bows to bodice at center front, spacing bows evenly.



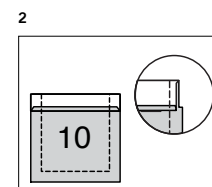
- 31. VIEW B:** Press up 5/8" (1.5cm) hem on lower edge of top.
To form **NARROW HEM**, tuck under raw edge to meet crease; press.
Stitch hem in place.

PANTS C

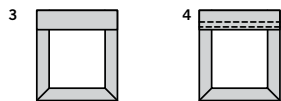
FRONT AND BACK



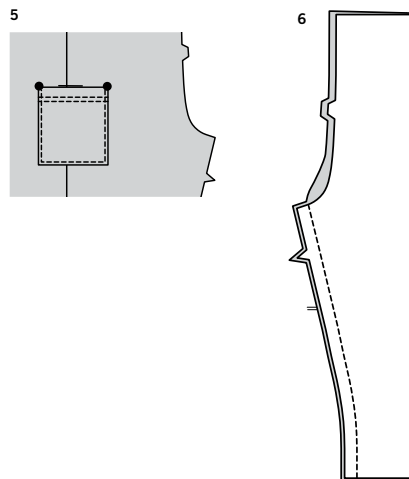
- 1.** Stitch FRONT (8) to BACK (9) at side seams.



- 2.** Press under 1/4" (6mm) on upper edge of each POCKET (10) section.
Turn upper edge to OUTSIDE along foldline, forming facing. Stitch along seam line on raw edges. Trim seam allowance in the facing area to 1/4" (6mm).

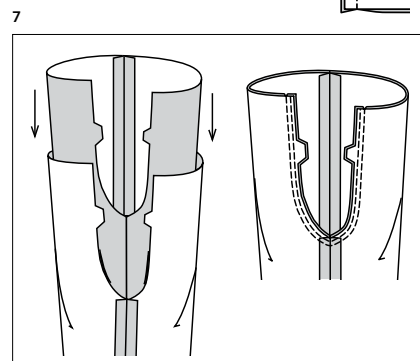


- 3.** Turn corners RIGHT side out, turning facing to the WRONG side. Press, pressing under raw edges along stitching.
- 4.** Stitch facing close to inner edge. Stitch again 1/4" (6mm) above first stitching.



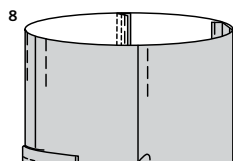
- 5.** On OUTSIDE, pin pocket to each front and back, matching dots. Stitch close to sides and lower edge.

- 6.** Stitch front to back at inner leg edge.

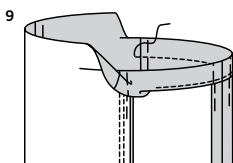


- 7.** For crotch seam, turn one pants leg right side out; slip inside remaining pants leg. Stitch. Stitch again 1/4" (6mm) away in seam allowance along curve, as shown. Trim close to second stitching. Press seam to one side.

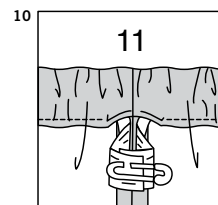
CASING



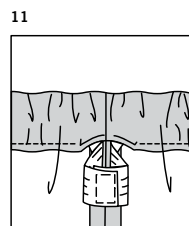
- 8.** For easier insertion of elastic, baste about 3" (7.5cm) of seam allowances in place at waist casing area.



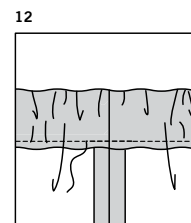
- 9.** Press 1-1/2" (3.8cm) on upper edge to INSIDE, forming casing. Press under 1/4" (6mm) on raw edge. Stitch close to lower edge of casing, leaving an opening to insert elastic.



- 10.** Cut a piece of elastic using ELASTIC GUIDE FOR WAIST (11) pattern piece. Insert elastic through opening in casing. Overlap ends and hold with a safety pin. Try on pants and adjust to fit.

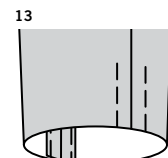


- 11.** Stitch ends of elastic together securely.

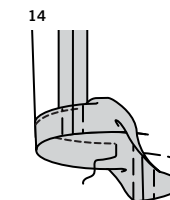


- 12.** Stitch opening in casing, stretching elastic while stitching. Distribute fullness evenly.

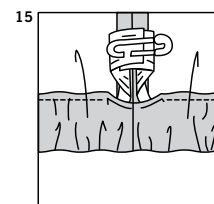
TIP: To secure elastic so it won't twist in wearing, stitch through all thicknesses of casing in the groove of each seam.



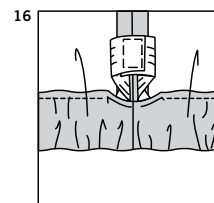
- 13.** For easier insertion of elastic, baste about 3" (7.5cm) of seam allowances in place at leg casing area.



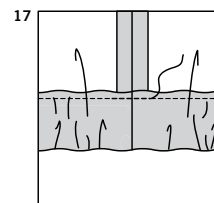
- 14.** Press 1-1/2" (3.8cm) on lower edge to INSIDE, forming casing. Press under 1/4" (6mm) on raw edge. Stitch close to upper edge of casing, leaving an opening to insert elastic.



- 15.** Cut two pieces of elastic, each using ELASTIC GUIDE FOR LEG (12) pattern piece. Insert elastic through opening in casing. Overlap ends and hold with a safety pin. Try on pants and adjust to fit.



- 16.** Stitch ends of elastic together securely.



- 17.** Stitch opening in casing, stretching elastic while stitching. Distribute fullness evenly.

TIP: To secure elastic so it won't twist in wearing, stitch through all thicknesses of casing in the groove of each seam.



Congrats!

You've completed your sewing adventure

SHARE YOUR LOOK



Post your pattern and tag us
@simplicity_creative_group and **#simplicitypatterns**
for a chance to be featured on our social media.

Look for more PDF patterns at [simplicity.com](https://www.simplicity.com)

Have a question or need help with your sewing project call us at
1-888-588-2700



Simplicity ©2024 a division of IG Design Group Americas Inc. • Atlanta, GA 30342 USA www.thedesigngroup.com • All Rights Reserved. www.simplicity.com • Made in the U.S.A. Fabriqué aux États-Unis.

To be used for individual private home use only and not for commercial or manufacturing purposes. • A usage privé seulement et non à des fins commerciales ou de production en série. • Para uso privado solamente, no se puede utilizar con propósitos de comercialización o de producción en serie.