

S9928

Simplicity®

easy-to-sew



A



B



C



D

Designed and printed in USA.



A,C

Easy

MISSES' LOUNGE TOPS, PANTS AND SHORTS

Suggested Fabrics: Charmeuse, Cotton Blends, Cotton Lawn, Crepe de Chine, Double Georgette, Gauze, Poplin, Seersucker, Silky Types, Voile. **Interfacing:** Lightweight Fusible.

Notions: C,D: 1½ yds. (1.1m) of 1¼" (3.2cm) elastic, 1½ yds. (1.7m) of ½" (1.3cm) twill tape or ribbon.

Sizes	XS	S	M	L	XL	XXL
	4-6	8-10	12-14	16-18	20-22	24-26
European	30-32	34-36	38-40	42-44	46-48	50-52

BODY MEASUREMENTS: Select pattern size based on body measurements

Bust	29½-30½	31½-32½	34-36	38-40	42-44	46-48	Ins.
Waist	22-23	24-25	26½-28	30-32	34-37	39-41½	"
Hip-9" below waist	31½-32½	33½-34½	36-38	40-42	44-46	48-50	"
Back-neck to waist	15¼-15½	15¼-16	16¼-16½	16¾-17	17¼-17½	17¾-18	"

Top A	60**	1%	1%	2	2	2½	2½	Yds.
Interfacing	20"	-	1 yd.					
Top B	60**	1%	1%	1%	1¾	1¾	1%	Yds.
Interfacing	20"	-	¾ yd.					
Pants C	45**	2%	2%	2¾	2¾	2¾	2¾	Yds.
	60**	1%	1%	1%	2¼	2¾	2¾	"
Shorts D	45**	1%	1%	1¾	1¾	1%	1%	Yds.
	60**	¾	¾	¾	1	1¾	1¾	"

NOTE: Please refer to the sewing instructions for **FINISHED GARMENT MEASUREMENTS**.

*with nap **without nap

Facile

HAUTS, PANTALON ET SHORT DE DÉTENTE POUR JEUNES FEMMES

Tissus Conseillés: Charmeuse, Cotonnades, Linon de coton, Crêpe de chine, Crêpe georgette double, Gaze, Popline, Seersucker, Tissus soyeux, Voile. **Entoilage:** Thermocollant léger.

Mercerie: C,D: 1.1m d'élastique de 3.2cm, 1.7m de talonnette de coton ou de ruban de 1.3cm.

Tailles	TP/XS	P/S	M/M	G/L	TG/XL	TTG/XXL
Françaises	32-34	36-38	40-42	44-46	48-50	52-54
Européen	30-32	34-36	38-40	42-44	46-48	50-52

MESURES DU CORPS: Choisissez la taille du patron basée sur les mesures du corps

Poitrine	75-77	80-83	87-92	97-102	107-112	117-122 cm
Taille	56-58	61-64	67-71	76-81	87-94	99-105 "
Hanches (23cm au-dessous de la taille)	80-83	85-88	92-97	102-107	112-117	122-127 cm
Dos du cou à la taille	39-39.5	40-40.5	41.5-42	42.5-43	44-44.5	45-45.5 "

Haut A	150cm*	1.7	1.7	1.8	1.8	1.9	2.1	m
Entoilage	51cm	-	1.0m					
Haut B	150cm*	1.5	1.5	1.5	1.5	1.6	1.7	m
Entoilage	51cm	-	0.6m					
Pantalon C	115cm*	2.4	2.4	2.4	2.6	2.6	2.6	m
	150cm*	1.5	1.5	1.5	2.1	2.4	2.4	"
Short D	115cm*	1.0	1.0	1.1	1.1	1.1	1.4	m
	150cm*	0.8	0.8	0.8	0.9	1.0	1.1	"

NOTE: S'il vous plaît, reportez-vous au instructions de couture pour les **MESURES DES VÊTEMENTS FINI**.

*avec sens **sans sens



A



B



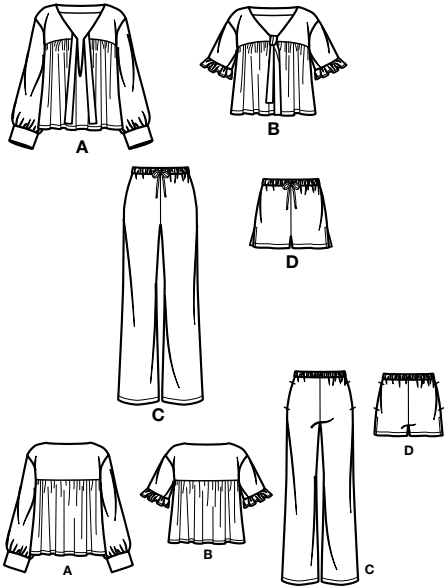
C



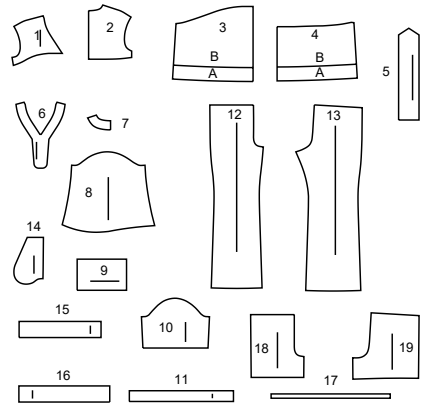
D

Simplicity®

Thank you for purchasing this Simplicity pattern.
We made every effort to provide you with a high quality product.



19 PIECES



- 1 YOKE FRONT - A,B
2 YOKE BACK - A,B
3 FRONT - A,B
4 BACK - A,B
5 TIE END - A,B
6 FRONT FACING - A,B
7 BACK FACING - A,B
8 SLEEVE - A
9 SLEEVE BAND - A
10 SLEEVE - B
11 SLEEVE RUFFLE - B
12 FRONT - C
13 BACK - C
14 POCKET - C,D
15 FRONT CASING - C,D
16 BACK CASING - C,D
17 GUIDE FOR ELASTIC - C,D
18 FRONT - D
19 BACK - D



www.simplicity.com



info@simplicity.com



1-888-588-2700

General Directions

The Pattern

- SYMBOLS**
- GRAIN LINE Place on straight grain of fabric parallel to selvage
 - PLACE SOLID LINE on fold of fabric.
 - CENTER FRONT OR BACK of garment.
 - NOTCHES
 - DOTS
 - CUTTING LINE
 - LENGTHEN OR SHORTEN LINES

SEAM ALLOWANCE: 5/8" (1.5cm) unless otherwise stated is included but not printed on MULTI-SIZE PATTERNS. Mark your size with colored felt tip pen. See chart on tissue for how to use MULTI-SIZE PATTERNS.

ADJUST IF NEEDED
Make adjustments before placing pattern on fabric.

TO LENGTHEN:
Cut pattern between lengthen or shorten lines. Spread pattern evenly, the amount needed and tape to paper.

TO SHORTEN:
At lengthen or shorten lines, make an even pleat taking up amount needed. Tape in place.

When lengthen or shorten lines are not given, make adjustments at lower edge of pattern.

Cutting/Marking

BEFORE CUTTING:

PRESS pattern pieces with a warm dry iron. PRE-SHRINK fabric by pre-washing washables or steam-pressing non-washables.

CIRCLE your cutting layout.

PIN pattern to fabric as shown in Cutting Layouts.

• FOR DOUBLE THICKNESS: Fold fabric with RIGHT sides together.

• FOR SINGLE THICKNESS: Place fabric RIGHT side up.

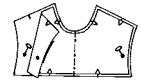
• FOR PILE, SHADED OR ONE WAY DESIGN FABRICS: Use "with nap" layouts

AFTER CUTTING:

Transfer markings to WRONG side of fabric before removing pattern. Use pin and chalk method or dressmaker's tracing paper and wheel.

To Quick Mark:

- Snip edge of fabric to mark notches, ends of fold lines and center lines.
- Pin mark dots.



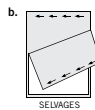
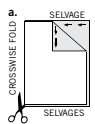
SPECIAL CUTTING NOTES

★ If layout shows a piece extending past fold, cut out all pieces except piece that extends.

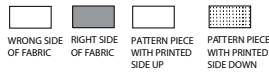
Open out fabric to single thickness. Cut extending piece on RIGHT side of fabric in position shown.

✱ Mark small arrows along both selvages indicating direction of nap or design. Fold fabric crosswise with RIGHT sides together, and cut along fold (a).

Turn one fabric layer around so arrows on both layers go in the same direction. Place RIGHT sides together (b).



Cutting Layouts



POSITION OF PATTERN PIECES MAY VARY SLIGHTLY ACCORDING TO YOUR PATTERN SIZE

Sizes	XS	S	M	L	XL	XXL
	4-6	8-10	12-14	16-18	20-22	24-26
European	30-32	34-36	38-40	42-44	46-48	50-52

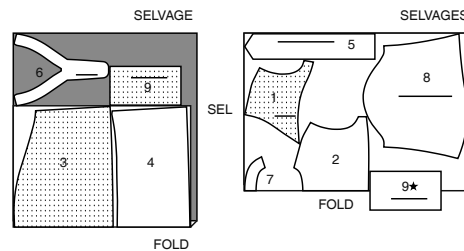
FINISHED GARMENT MEASUREMENTS (Includes Design and Wearing Ease)

A,B Bust	51	53	56½	60½	64½	68½	Ins.
C,D Hip	36	38	41½	45½	49½	53½	"
Width, lower edge							
Top A	70	72	75½	79½	83½	87½	Ins.
Top B	69	71	74½	78½	82½	86½	"
Width, each leg							
Pants C	21	22	23	24	25	26	Ins.
Shorts D	26½	28	30	32½	35	37½	"
Finished back length from base of neck							
Top A	20½	21	21½	22	22½	23	Ins.
Top B	17½	18	18½	18½	18½	19	"
Finished side length from waist							
Pants C	41½	42	42½	43	43½	44	Ins.
Shorts D	13½	14	14½	15	15½	16	"

TOP A

USE PIECES 1 2 3 4 5 6 7 8 9

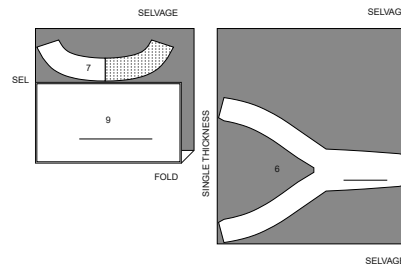
60" (150CM)
WITH NAP
ALL SIZES



INTERFACING A

USE PIECES 6 7 9

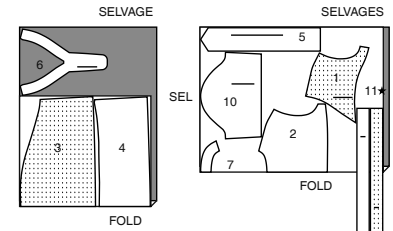
20" (51CM)
ALL SIZES



TOP B

USE PIECES 1 2 3 4 5 6 7 10 11

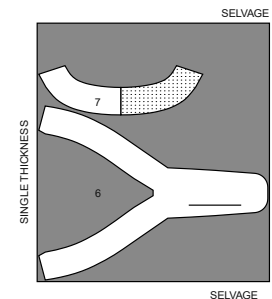
60" (150CM)
WITH NAP
ALL SIZES



INTERFACING B

USE PIECES 6 7

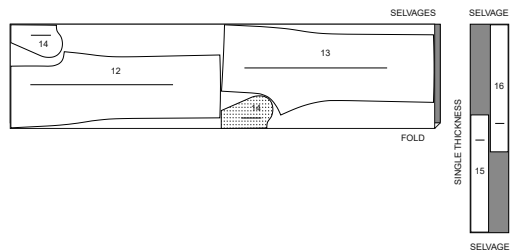
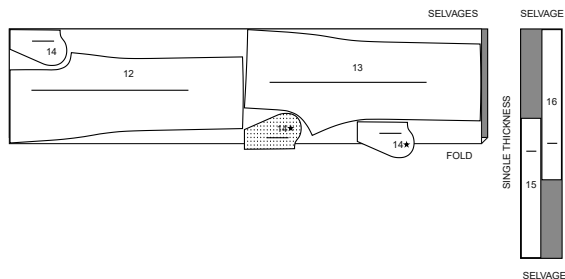
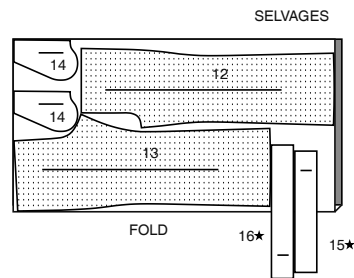
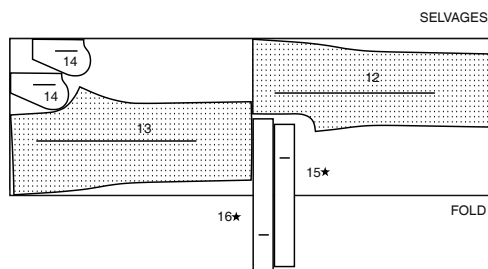
20" (51CM)
ALL SIZES



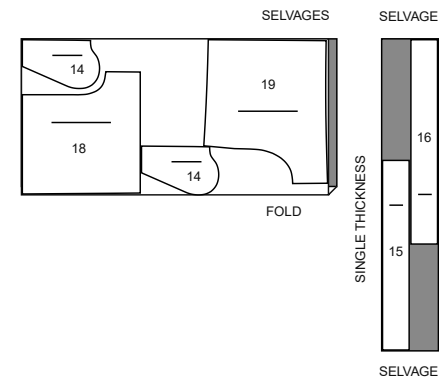
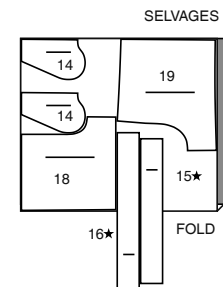
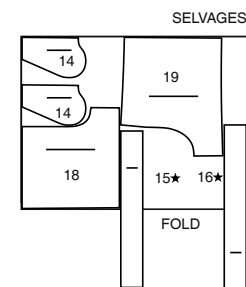
CUTTING LAYOUTS CONTINUED ON PAGE 2

PANTS C

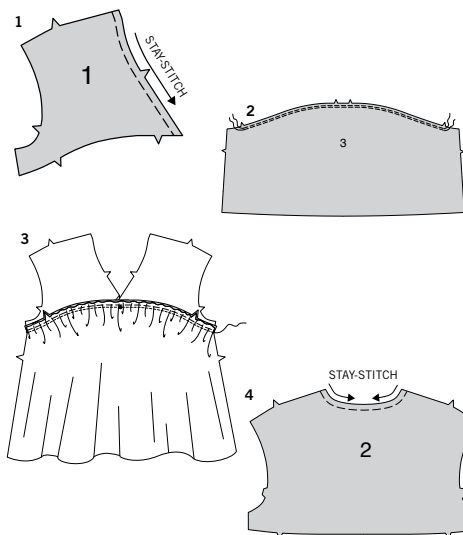
USE PIECES 12 13 14 15 16

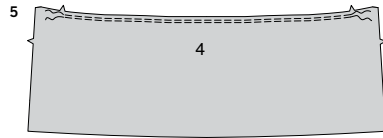
45" (115CM)
WITH NAP
SIZES XS S M L XL45" (115CM)
WITH NAP
SIZES XXL60" (150CM)
WITH NAP
SIZES XS S M60" (150CM)
WITH NAP
SIZES L XL XXL**SHORTS D**

USE PIECES 14 15 16 18 19

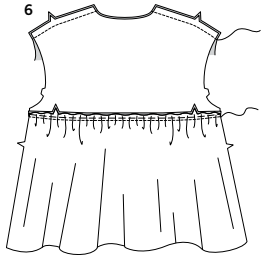
45" (115CM)
WITH NAP
ALL SIZES60" (150CM)
WITH NAP
SIZES XS S M L XL60" (150CM)
WITH NAP
SIZES XXL**Sewing Directions****FABRIC KEY**Read **General Directions** on page 1 before you begin.Sewing methods in **BOLD TYPE** have Sewing Tutorial Video available. Scan QR CODE to watch videos:**EASE/GATHER** - see **Gathering**: "sewing two row gathers" video.**EDGE STITCH** - see **Machine Stitches**: "how to edgestitch" video.**NARROW HEM** - see **Hems**: "sewing narrow hems" video.**REINFORCE** - see **Machine Stitches**: "how to reinforce" video.**SLEEVE** - see **Armholes/Sleeves**: "sewing a set-in sleeve" video.**STAYSTITCH** - see **Machine Stitches**: "how to do staystitching" video.**TACK** - see **Hand-Stitching**: "how to tack" video.**TOPSTITCH** - see **Machine Stitches**: "how to topstitch" video.**TRIM** - see **How to Sew**: Trim, Clip, and Layer Seams" video.**UNDERSTITCH** - see **Machine Stitches**: "how to understitch" video.**SLIPSTITCH** - Slide needle through a folded edge, then pick up a thread of underneath fabric.**PATTERN PIECES WILL BE IDENTIFIED BY NUMBERS THE FIRST TIME THEY ARE USED.****STITCH 5/8" (1.5CM) SEAMS WITH RIGHT SIDES TOGETHER UNLESS OTHERWISE STATED.**

SEWING TUTORIALS

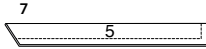
Build your skills viewing short, easy-to-follow videos at
[simplicity.com/sewingtutorials](https://www.simplicity.com/sewingtutorials)**TOP A, B****1. STAYSTITCH** neck edge of yoke front (1) sections in direction of arrows.
STAYSTITCHING won't be shown in the following illustrations.**2. GATHER** upper edge of front (3) between notches.**3.** Pin front to lower edge of yoke, matching centers and notches. Pull up gathering stitches to fit; baste. Stitch. Press front out, pressing seam toward yoke.**4. STAYSTITCH** neck edge of yoke back (2) sections.



- 5. GATHER** upper edge of back (4) between notches.



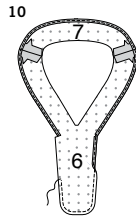
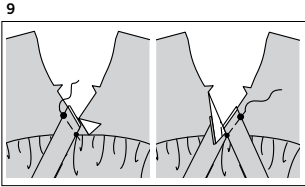
- 6.** Pin back to lower edge of yoke, matching centers and notches. Pull up gathering stitches to fit; baste. Stitch. Press back out, pressing seam toward yoke. Stitch back to front at shoulders.



- 7.** Fold tie end (5) in half, lengthwise, with right sides together. Stitch, leaving short, angled edge open **TRIM** seam and corners.

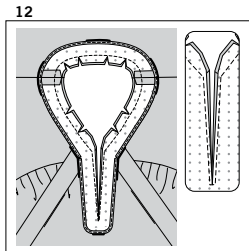
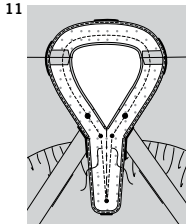


- 8.** Turn tie; press. Baste raw edges.



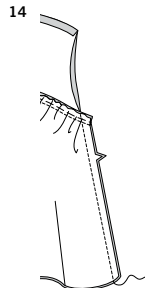
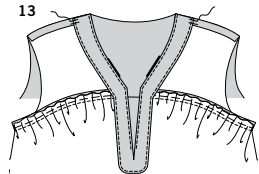
- 9.** Baste ties to right yoke, matching small and large dots, having raw edges even, and keeping left yoke free. Baste remaining tie to left front in same manner, keeping right yoke free.

- 10.** Apply fusible interfacing to **WRONG** side of front facing (6) and back facing (7), following manufacturer's directions. Stitch shoulder seams of facing sections. To finish unnotched edge, stitch 1/4" (6mm) from edge, turn under along stitching and stitch OR zigzag over the edge OR overlock/serge over the edge.



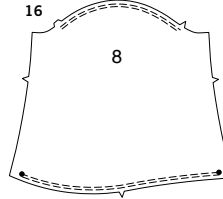
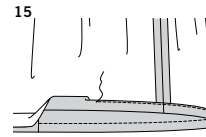
- 11.** With right sides together and raw edges even, pin facing to neck edge, matching centers, shoulder seams, small and large dots. Baste along center front line. Stitch along stitching lines on front facing and along seam line at neck edge pivoting with needle in fabric at small dots, as shown. To **REINFORCE** point, stitch over first stitching.

- 12.** Slash between stitching to the point, being careful not to clip through stitching. **TRIM** seam and corners; clip curves.



- 13. UNDERSTITCH** facing as far as possible. Turn facing to **INSIDE**, turning out ties; press. **TACK** facing to seam allowances to keep it from rolling to **OUTSIDE**.

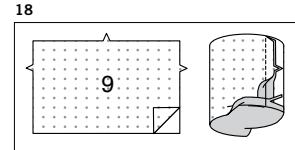
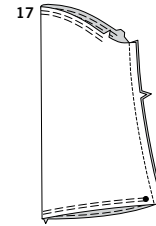
- 14.** Stitch back to front at side seams.



- 15.** Press up 1-1/4" (3.2cm) hem. Press under 1/4" (6mm) on raw edge. Stitch close to inner pressed edge.

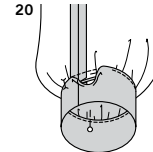
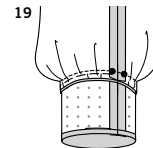
CONTINUE AS FOLLOWS FOR TOP A

- 16. EASE** upper edge of sleeve (8) between outer small dots. **GATHER** lower edge between large dots.



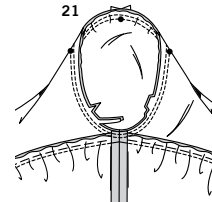
- 17.** Stitch underarm seam of sleeve.

- 18.** Apply interfacing to **WRONG** side of sleeve band (9). Stitch notched ends of sleeve band together. Press under 5/8" (1.5cm) on unnotched edge; trim to 3/8" (1cm).



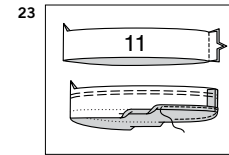
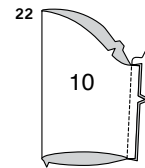
- 19.** With **RIGHT** sides together, pin sleeve band to lower edge of sleeve, matching seams and large dots. Pull up gathering stitches to fit. Baste. Stitch seam. **TRIM** seam. Press seam toward band.

- 20.** On **INSIDE**, pin pressed edge of band over seam, placing pins on **OUTSIDE**. On **OUTSIDE**, **EDGE STITCH** band, catching in pressed edge of band on **INSIDE**.



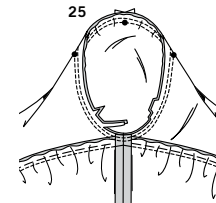
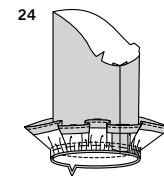
- 21.** Turn sleeve **RIGHT** side out. Hold top **WRONG** side out with the armhole toward you. Insert **SLEEVE**, having center small dot at shoulder seam, matching underarm seams, notches and remaining small dots, adjusting ease stitches to fit. Pin sleeve in place; stitch. Stitch again 1/8" (3mm) from first stitching. Trim close to stitching between notches.

CONTINUE AS FOLLOWS FOR TOP B



- 22.** Stitch underarm seam of sleeve (10).

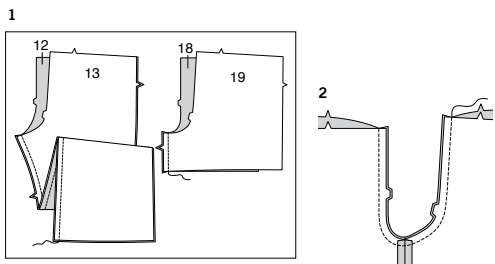
- 23.** Stitch notched ends of sleeve ruffle (11). **GATHER** notched edge. Make a 5/8" (1.5cm) **NARROW HEM** on lower edge.



- 24.** With right sides together and raw edges even, pin ruffle to sleeve, matching seams and notches. Pull up gathering stitches to fit. Baste. Stitch seam. Press ruffle out, pressing seam toward band.

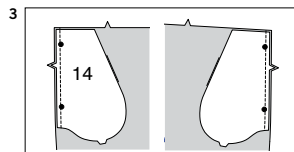
- 25.** Turn sleeve **RIGHT** side out. Hold top **WRONG** side out with the armhole toward you. Insert **SLEEVE**, having center small dot at shoulder seam, matching underarm seams, notches and remaining small dots, adjusting ease stitches to fit. Pin sleeve in place; stitch. Stitch again 1/8" (3mm) from first stitching. Trim close to stitching between notches.

PANTS C AND SHORTS D

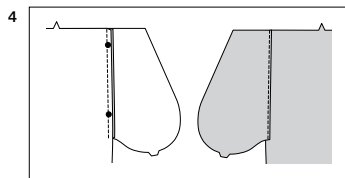


1. Stitch front (12 or 18) to back (13 or 19) at inner leg seams.

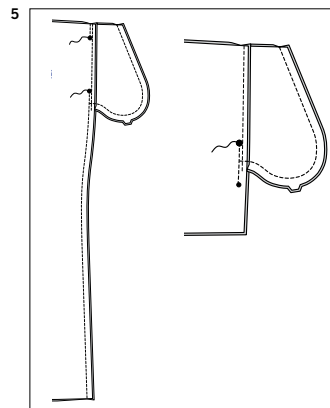
2. Pin center front seam, matching notches and inner leg seams.
Stitch.
REINFORCE seam.



3. Apply pockets to side edges of front and back as follows:
With **RIGHT** sides together and raw edges even, pin one pocket (14) section to each front and back section, matching large dots.
Stitch in a 3/8" (1cm) seam.



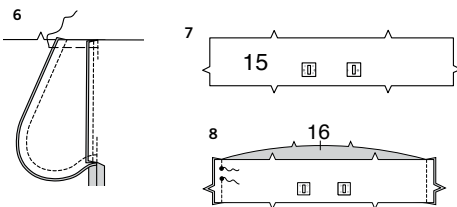
4. Press seam toward pocket, pressing pocket out.
UNDERSTITCH front pockets.



5. Pin front to back at side seams, matching large dots.
VIEW C - Stitch side seams, leaving an opening between large dots; back-stitch at large dots to reinforce seam.
Stitch pocket edges together from side seam to upper edge.
VIEW D - Stitch side seam above small dot, leaving an opening between large dots; back-stitch at dots to reinforce seam.
Stitch pocket edges together from side seam to upper edge.

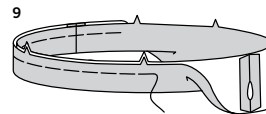
CONTINUES AS FOLLOWS FOR VIEWS C, D

6. Clip pants back seam allowance at ends of pocket.
Press seam open below clip.
Press pocket toward front.
Baste upper edge of pocket.

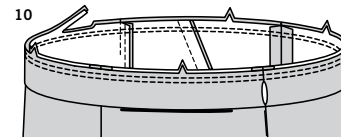


7. Apply a piece of fusible interfacing remnant to **WRONG** side of front casing (15) section large enough to cover each buttonhole area, following manufacturer's directions.
On **OUTSIDE**, make buttonholes in casing at markings.

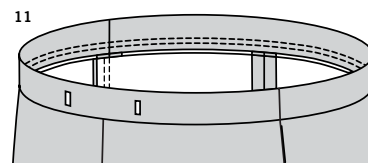
8. With **RIGHT** sides together, stitch back casing (16) to front casing at sides, leaving an opening in **LEFT** side seam between small dots, as shown.
Back-stitch at small dots to reinforce seam.



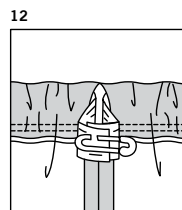
9. Fold casing in half, lengthwise, with **WRONG** sides together, having raw edges even.
Baste raw edges together.
The side with the opening is the underside of the casing.



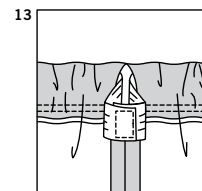
10. With the underside of casing facing you, pin casing to pants or shorts, matching centers, side seams, and notches. Stitch along seam line.
Stitch again 1/4" (6mm) from first stitching within seam allowance.
Trim close to second stitching.



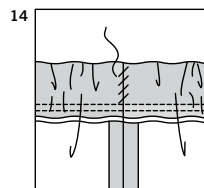
11. Press seam toward pants, pressing casing out.



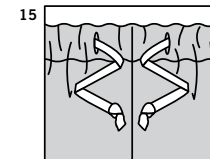
12. Cut a piece of elastic the length of guide for elastic (17).
Insert elastic through opening in casing.
Overlap ends and hold with a safety pin.
Try on pants and adjust to fit.



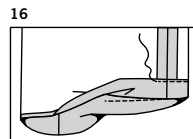
13. Stitch ends of elastic together securely.



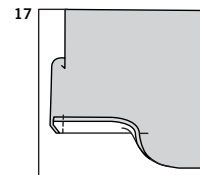
14. **SLIPSTITCH** opening edges of casing together.
Distribute fullness evenly.



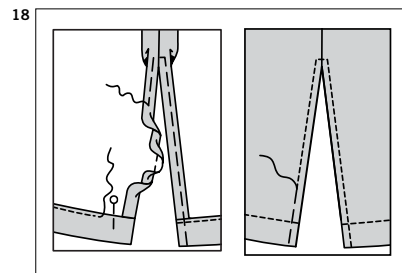
15. Attach a safety pin to one end of drawstring.
Insert pin and drawstring through one buttonhole opening in front casing.
Work drawstring through entire casing and out through remaining buttonhole, having ends extend evenly in the front.
Knot ends of drawstring at desired length and trim ends at an angle.
Fasten into a bow when wearing.



16. **VIEW C** - Press up 1-1/4" (3.2cm) hem.
Press under 1/4" (6mm) on raw edge.
Stitch close to inner pressed edge.



17. **VIEW D** - Turn 1-1/4" (3.2cm) hem to **OUTSIDE** on slit opening edges; press, pressing under 1/4" (6mm) on inner raw edge.
Stitch across ends.
Trim corners.



18. Turn hem to **INSIDE**.
Press up 1-1/4" (3.2cm) hem on lower edge, pressing under 1/4" (6mm) on inner raw edge; pin.
Press under 5/8" (1.5cm) on slit opening edges, pressing under 1/4" (6mm) on inner raw edge.
Baste close to inner pressed edges, squaring stitches above opening.
Stitch hem.
On outside, **TOPSTITCH** slits along basting; remove basting.



Congrats!

You've completed your sewing adventure

SHARE YOUR LOOK



Post your pattern and tag us
@simplicity_creative_group and **#simplicitypatterns**
for a chance to be featured on our social media.

Look for more PDF patterns at [simplicity.com](https://www.simplicity.com)

Have a question or need help with your sewing project call us at
1-888-588-2700



Simplicity ©2024 a division of IG Design Group Americas Inc. • Atlanta, GA 30342 USA www.thedesigngroup.com • All Rights Reserved. www.simplicity.com • Made in the U.S.A. Fabriqué aux États-Unis.

To be used for individual private home use only and not for commercial or manufacturing purposes. • A usage privé seulement et non à des fins commerciales ou de production en série. • Para uso privado solamente, no se puede utilizar con propósitos de comercialización o de producción en serie.