

S9927

**Simplicity**



Designed and printed in USA.

Average

**MISSES' CORSETS, PANTS AND SKIRT**

**Suggested Fabrics:** A,B,C: Brocade, Chambray, Chintz, Damask, Dupioni, Poplin, Sateen, Satin, Shantung. D,E: Chambray, Cotton Blends, Faille, Gabardine, Sateen, Stretch Wovens, Twill, Wool Blends. Lining: Cotton Blends, Polyester Blends. **Interfacing:** Lightweight Fusible.

**Notions:** A,B,C: ¼" (6mm) featherweight boning: 3½ yds. (3.5m) for A,B, 3¼ yds. (2.9m) for C. Also for A,B: One 12" (30cm) separating zipper. Also for C: One 9" (23cm) separating zipper (adjust to fit). D,E: One 7" (18cm) invisible zipper (adjust to fit).

Sizes	8	10	12	14	16	18	20	22	24	26
European	34	36	38	40	42	44	46	48	50	52

**BODY MEASUREMENTS: Select pattern size based on body measurements**

Bust	31½	32½	34	36	38	40	42	44	46	48	Ins.
Waist	24	25	26½	28	30	32	34	37	39	41½	"
Hip-9" below waist	33½	34½	36	38	40	42	44	46	48	50	"
Back-neck to waist	15¾	16	16¼	16½	16¾	17	17¼	17½	17¾	17¾	"

Corset A	45**	¾	¾	¾	¾	¾	¾	1	1	1	1	Yds.
	60**	¾	¾	¾	¾	¾	¾	¾	¾	¾	¾	"

Lining A,B	45**	¾	¾	¾	¾	¾	¾	1	1	1	1	Yd.
Interfacing A,B	20" - 1½ yds.											

Corset B	45, 60**	1½	1½	1½	1½	1½	1½	1½	1½	1½	1½	Yds.
----------	----------	----	----	----	----	----	----	----	----	----	----	------

Corset C	45**	¾	¾	¾	¾	¾	¾	1	1	1	1	Yds.
	60**	¾	¾	¾	¾	¾	¾	¾	¾	¾	¾	"

Lining C	45**	¾	¾	¾	¾	¾	¾	¾	¾	¾	¾	"
Interfacing C	20" - 1½ yds.											

Pants D	45**	2	2¼	2¼	2¼	2½	2½	2½	2½	2½	2½	Yds.
	60**	1½	1½	1½	1½	1½	2	2	2	2	2	"

Interfacing D,E	20" - ¾ yd.											
Skirt E	45**	1¼	1¼	1¼	1¼	1¼	1½	1½	1½	1½	1½	Yds.
	60**	¾	¾	¾	¾	¾	¾	1	1	1	1	"

**NOTE:** Please refer to the sewing instructions for FINISHED GARMENT MEASUREMENTS.

\*with nap \*\*without nap

Moins Facile

**CORSETS, PANTALON ET JUPE POUR JEUNES FEMMES**

**Tissus Conseillés:** A,B,C: Brocade, Chambray, Chintz, Damas, Dupioni, Popeline, Satin de coton, Satin, Shantung. D,E: Chambray, Cottonnades, Faille, Gabardine, Satin de coton, Tissus tissés extensibles, Twill, Lainages. **Doubleure:** Cottonnades, Mélanges de polyester. **Entoilage:** Thermocollant léger.

**Mercerie:** A,B,C: Baleine de poids très léger de 6mm: 3.5m pour A,B, 2.9m pour C. **Aussi pour A,B:** 1 fermeture à glissière séparable de 30cm. **Aussi pour C:** 1 fermeture à glissière séparable de 23cm (adaptez pour ajuster). **D,E:** 1 fermeture à glissière invisible de 18cm (adaptez pour ajuster).

Tailles	8	10	12	14	16	18	20	22	24	26
Françaises	36	38	40	42	44	46	48	50	52	54
Européen	34	36	38	40	42	44	46	48	50	52

**MESURES DU CORPS: Choisissez la taille du patron basée sur les mesures du corps**

Poitrine	80	83	87	92	97	102	107	112	117	122	cm
Taille	61	64	67	71	76	81	87	94	99	106	"

Hanches (23cm au-dessous de la taille)											
	85	88	92	97	102	107	112	117	122	127	cm
Dos du cou à la taille	40	40.5	41.5	42	42.5	43	44	44	44.5	44.5	"

Corset A	115cm*	0.7	0.7	0.7	0.7	0.8	0.8	0.9	0.9	0.9	0.9	m
	150cm*	0.6	0.6	0.6	0.6	0.6	0.6	0.8	0.8	0.8	0.8	"

Doubleure A,B	115cm**	0.7	0.7	0.7	0.8	0.8	0.8	0.9	0.9	0.9	0.9	m
Entoilage A,B	51cm - 1.7m											

Corset B	115, 150cm*	1.3	1.3	1.3	1.3	1.3	1.3	1.3	1.3	1.3	1.3	m
----------	-------------	-----	-----	-----	-----	-----	-----	-----	-----	-----	-----	---

Corset C	115cm*	0.8	0.8	0.8	0.9	1.0	1.0	1.0	1.1	1.1	1.1	m
	150cm*	0.7	0.7	0.7	0.7	0.7	0.8	0.8	0.8	0.8	0.8	"

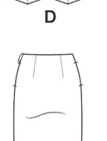
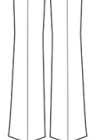
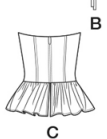
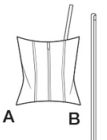
Doubleure C	115cm**	0.6	0.6	0.6	0.6	0.6	0.7	0.7	0.7	0.7	0.7	"
Entoilage C	51cm - 1.3m											

Pantalon D	115cm*	1.8	1.9	2.1	2.1	2.1	2.3	2.3	2.3	2.3	2.4	m
	150cm*	1.4	1.4	1.4	1.4	1.4	1.8	1.8	1.8	2.1	2.2	"

Entoilage D,E	115cm - 0.8m											
Jupe E	115cm*	1.0	1.0	1.0	1.0	1.0	1.5	1.5	1.5	1.5	1.5	m
	150cm*	0.8	0.8	0.8	0.8	0.8	1.0	1.0	1.0	1.0	1.0	"

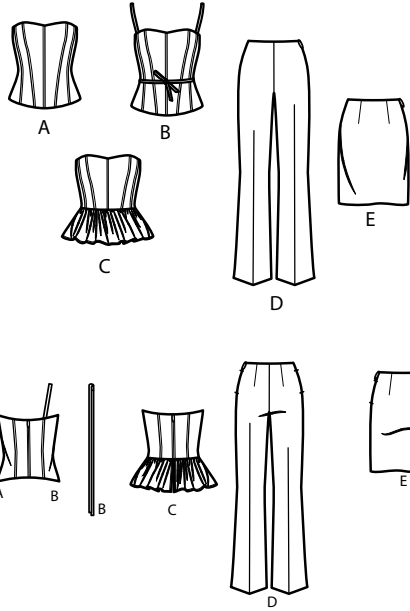
**NOTE:** S'il vous plaît, reportez-vous aux instructions de couture pour les MESURES DES VÊTEMENTS FINI.

\*avec sens \*\*sans sens

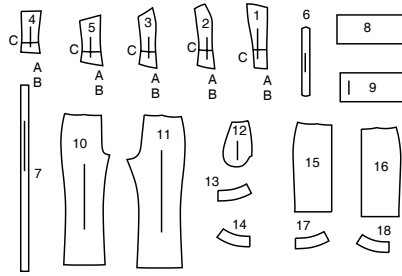


# Simplicity® S9927

Thank you for purchasing this Simplicity pattern. We made every effort to provide you with a high quality product.



18 PIECES



- 1 FRONT - A,B,C
- 2 MIDDLE FRONT - A,B,C
- 3 SIDE FRONT - A,B,C
- 4 BACK - A,B,C
- 5 SIDE BACK - A,B,C
- 6 SHOULDER STRAP - B
- 7 TIE - B
- 8 PEPLUM FRONT - C
- 9 PEPLUM BACK - C
- 10 FRONT - D
- 11 BACK - D
- 12 POCKET - D,E
- 13 FRONT FACING - D
- 14 BACK FACING - D
- 15 FRONT - E
- 16 BACK - E
- 17 FRONT FACING - E
- 18 BACK FACING - E

## General Directions

### The Pattern

**SYMBOLS**

- ↔ GRAIN LINE Place on straight grain of fabric parallel to selvage
- ⇄ PLACE SOLID LINE on fold of fabric.
- CENTER FRONT OR BACK of garment.
- ▽ NOTCHES
- DOTS
- CUTTING LINE
- LENGTHEN OR SHORTEN LINES

**ADJUST IF NEEDED**

Make adjustments before placing pattern on fabric.

**TO LENGTHEN:** Cut pattern between lengthen or shorten lines. Spread pattern evenly, the amount needed and tape to paper.

**TO SHORTEN:** At lengthen or shorten lines, make an even pleat taking up amount needed. Tape in place.

When lengthen or shorten lines are not given, make adjustments at lower edge of pattern.

**SEAM ALLOWANCE:** 5/8" (1.5cm) unless otherwise stated is included but not printed on MULTI-SIZE PATTERNS. Mark your size with colored felt tip pen. See chart on tissue for how to use MULTI-SIZE PATTERNS.

### Cutting/Marking

**BEFORE CUTTING:**

PRESS pattern pieces with a warm dry iron. PRE-SHRINK fabric by pre-washing washables or steam-pressing non-washables.

CIRCLE your cutting layout.

PIN pattern to fabric as shown in Cutting Layouts.

- FOR DOUBLE THICKNESS: Fold fabric with RIGHT sides together.
- FOR SINGLE THICKNESS: Place fabric RIGHT side up.
- FOR PILE, SHADED OR ONE WAY DESIGN FABRICS: Use "with nap" layouts

**AFTER CUTTING:**

Transfer markings to WRONG side of fabric before removing pattern. Use pin and chalk method or dressmaker's tracing paper and wheel.

**To Quick Mark:**

- Snip edge of fabric to mark notches, ends of fold lines and center lines.
- Pin mark dots.

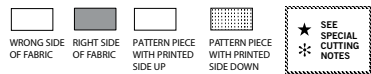
### Sewing

- SEW garment following **Sewing Directions**.
- PIN or machine-baste seams matching notches.
- STITCH 5/8" (1.5 cm) seams unless otherwise stated.
- PRESS seams open unless otherwise indicated clipping when necessary so seams will lie flat.
- TRIM seams to reduce bulk, as shown below.

### SPECIAL CUTTING NOTES

- ★ If layout shows a piece extending past fold, cut out all pieces except piece that extends. Open out fabric to single thickness. Cut extending piece on RIGHT side of fabric in position shown.
- ✱ Mark small arrows along both selvages indicating direction of nap or design. Fold fabric crosswise with RIGHT sides together, and cut along fold (a). Turn one fabric layer around so arrows on both layers go in the same direction. Place RIGHT sides together (b).

## Cutting Layouts



POSITION OF PATTERN PIECES MAY VARY SLIGHTLY ACCORDING TO YOUR PATTERN SIZE

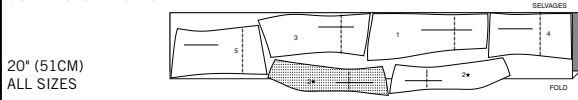
Sizes	8	10	12	14	16	18	20	22	24	26
European	34	36	38	40	42	44	46	48	50	52

**FINISHED GARMENT MEASUREMENTS (includes Design and Wearing Ease)**

A,B,C Bust	32 1/2	33 1/2	35	37	39	41	43	45	47	49
A,B,C Waist	25	26	27 1/2	29 1/2	31 1/2	33 1/2	35 1/2	37 1/2	39 1/2	41 1/2
D Hip	36 1/2	37 1/2	39	41	43	45	47	49	51	53
E Hip	35 1/2	36 1/2	38	40	42	44	46	48	50	52
Width, lower edge										
Corset A,B	31	32	33 1/2	35 1/2	37 1/2	39 1/2	41 1/2	43 1/2	45 1/2	47 1/2
Corset C	62	63	64 1/2	66 1/2	68 1/2	70 1/2	72 1/2	74 1/2	76 1/2	78 1/2
Skirt E	34	35	36 1/2	38 1/2	40 1/2	42 1/2	44 1/2	46 1/2	48 1/2	50 1/2
Width, each leg										
Pants D	18 1/2	19	19 1/2	20	20 1/2	21	21 1/2	22	22 1/2	23
Finished back length from base of neck										
Corset A,B	18 1/4	18 1/2	18 3/4	19	19 1/4	19 1/2	19 3/4	20	20 1/4	20 1/2
Corset C	21 1/4	22	22 1/4	22 1/2	22 3/4	23	23 1/4	23 1/2	23 3/4	24
Finished side length from waist										
Pants D (sts 1" below waist)	36 1/4	37	37 1/4	37 3/4	38	38 1/4	38 1/2	38 3/4	39	39 1/4
Finished back length from waist										
Skirt E (sts 1" below waist)	21	21	21	21	21	21	21	21	21	21

**NOTE:** DASHED LINE SHOWN ON PATTERN PIECES IN CUTTING LAYOUT INDICATES CUTTING LINE FOR SHORTER LENGTH

### INTERFACING A,B,C

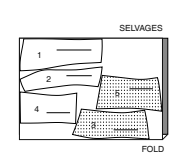


20" (51CM)  
ALL SIZES

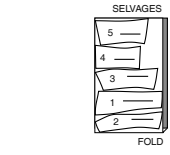
### CORSET A

USE PIECES 1 2 3 4 5

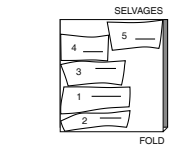
45" (115CM) WITH NAP ALL SIZES



60" (150CM) WITH NAP ALL SIZES



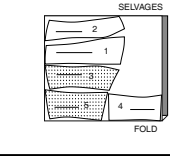
60" (150CM) WITH NAP ALL SIZES



### LINING A,B

USE PIECES 1 2 3 4 5

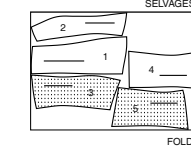
45" (115CM) WITHOUT NAP ALL SIZES



### CORSET B

USE PIECES 1 2 3 4 5 6 7

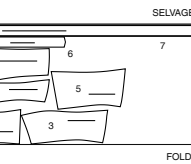
45" (115CM) WITHOUT NAP ALL SIZES



### CORSET C

USE PIECES 1 2 3 4 5 6 7 8 9

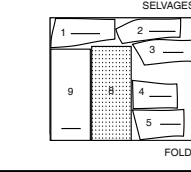
45/60" (115/150CM) WITH NAP ALL SIZES



### LINING C

USE PIECES 1 2 3 4 5

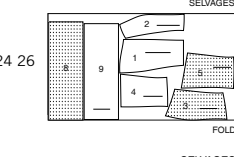
45" (115CM) WITHOUT NAP ALL SIZES



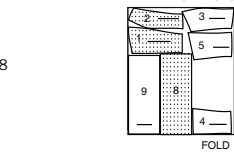
### CORSET A

USE PIECES 1 2 3 4 5

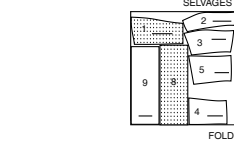
45" (115CM) WITH NAP ALL SIZES



60" (150CM) WITH NAP ALL SIZES



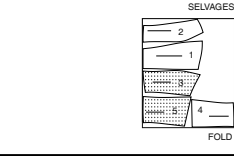
60" (150CM) WITH NAP ALL SIZES



### LINING C

USE PIECES 1 2 3 4 5

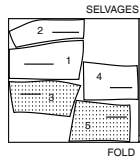
45" (115CM) WITHOUT NAP ALL SIZES



S9927

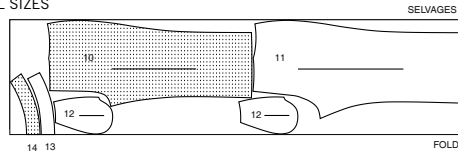
2 of 5

45" (115CM)  
WITHOUT NAP  
SIZES 18 20 22 24 26

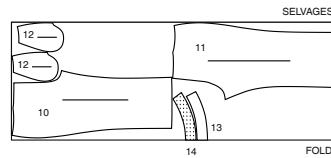


**PANTS D**  
USE PIECES 10 11 12 13 14

45" (115CM) WITH NAP  
ALL SIZES

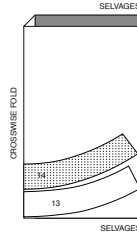


60" (150CM)  
WITH NAP  
ALL SIZES

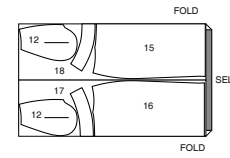


**INTERFACING D**  
USE PIECES 13 14

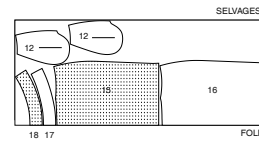
20" (51CM)  
ALL SIZES



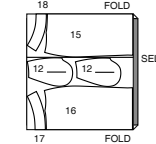
**SKIRT E**  
USE PIECES 12 15 16 17 18  
45" (115CM)  
WITH NAP  
SIZES 8 10 12 14 16



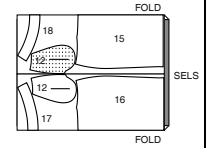
45" (115CM)  
WITH NAP  
SIZES 18 20 22 24 26



60" (150CM)  
WITH NAP  
SIZES 8 10 12 14 16

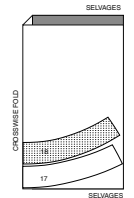


60" (150CM)  
WITH NAP  
SIZES 18 20 22 24 26

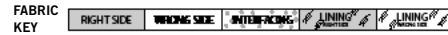


**INTERFACING E**  
USE PIECES 17 18

20" (51CM)  
ALL SIZES



## Sewing Directions



Sewing methods in **BOLD TYPE** have Sewing Tutorial Video available. Scan QR CODE to watch videos:

- DART** - See Darts: "sewing flat dart" video.
- EASE/GATHER** - See Gathering: "sewing two row gathers" video.
- FINISH** - See Seams: "how to finish seam allowances" video.
- NARROW HEM** - See Hems: "sewing narrow hems" video.
- REINFORCE** - See Machine Stitches: "how to reinforce" video.
- SLIPSTITCH** - See Hand-Stitching: "how to slipstitch" video.
- STAYSTITCH** - See Machine Stitches: "how to do stay-stitching" video.
- TACK** - See Hand-Stitching: "how to tack" video.
- TOPSTITCH** - See Machine Stitches: "how to topstitch" video.
- TRIM** - See How to Sew: Trim, Clip, and Layer Seams" video.
- UNDERSTITCH** - See Machine Stitches: "how to understitch" video.

**PATTERN PIECES WILL BE IDENTIFIED BY NUMBERS THE FIRST TIME THEY ARE USED.**

**STITCH 1/4" (6MM) SEAMS WITH RIGHT SIDES TOGETHER UNLESS OTHERWISE STATED.**

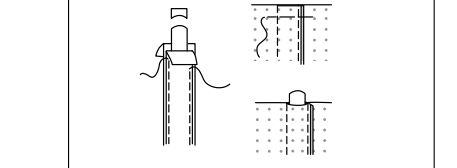
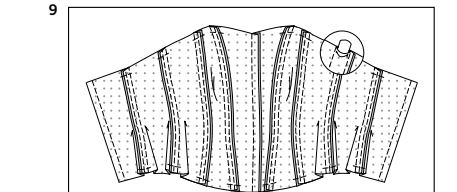
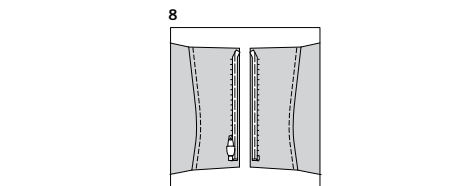
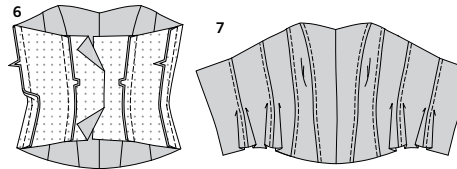
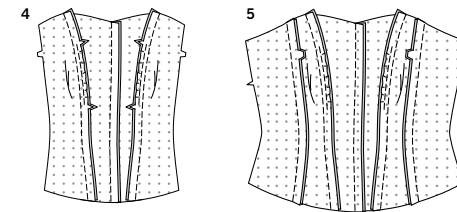
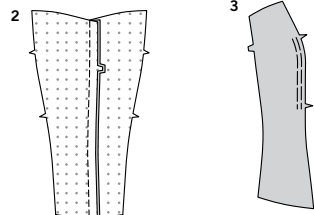
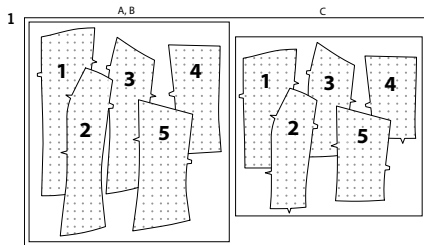
### CORSET A, B, C

- 1. FOR VIEW A, B-** Apply interfacing to **WRONG** side of front (1), middle front (2), side front (3), back (4), and side back (5) sections, following manufacturer's directions.  
**FOR VIEW C-** Apply interfacing to **WRONG** side of front (1), middle front (2), side front (3), back (4), and side back (5) sections, following manufacturer's directions.
- 2.** Stitch center front seam of front sections, matching double notches. Press seam toward one side.
- 3. EASE** inner edge of middle front sections between notches.

SEWING TUTORIALS

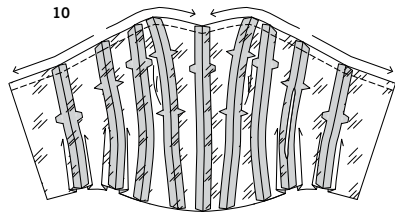


Build your skills viewing short, easy-to-follow videos at [simplicity.com/sewingtutorials](http://simplicity.com/sewingtutorials)

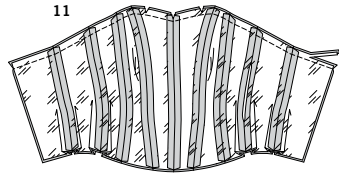


- 4.** Pin middle front to front, matching single notches. Adjust ease stitches to fit; baste. Stitch seam; press toward center front.
  - 5.** Stitch side fronts to middle fronts at sides, matching double notches; press seam toward center front.
  - 6.** Stitch side backs to backs, matching double notches. Stitch back to front at side seams. Press seams toward center back.
  - 7.** To form casings for boning, on **OUTSIDE**, stitch 3/8" (1cm) from each seam, stitching through seam allowances.
- NOTE:** The zipper will be shortened from the top by tapering it into seam allowances. If you prefer not to do this, you can purchase a custom sized zipper online and place top stop 3/4" (2cm) below upper edge.

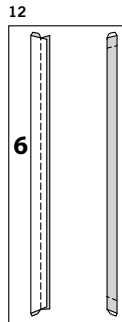
- 8.** Separate zipper. On **OUTSIDE**, pin slider side of zipper, face down onto **LEFT** back opening edge, having bottom stop a generous 5/8" (1.5cm) above lower raw edge and zipper tape 1/4" (6mm) away from outer raw edge. Abruptly taper upper end of zipper tape into seam allowance exactly 3/4" (2cm) below upper raw edge, as shown. Hand baste zipper in place along center of tape. On **OUTSIDE**, pin remaining side of zipper, face down onto **RIGHT** back opening edge in same manner. Make sure that both sides of tape are aligned. Hand-baste remaining side of zipper in place along center of tape. To avoid bumpy stitching around the tab and slider, stop stitching just before you get to the slider. Leaving the needle in the fabric, raise the presser foot and pull the slider down below the needle. Lower the presser foot and continue stitching.
- 9.** Cut nine strips of boning each the length of stitched casing, excluding upper and lower seam allowances. Remove boning from casing. Trim 1/4" (6mm) of boning from each end, curving ends, as shown. Insert boning between seam allowances. Baste 5/8" (1.5cm) from upper and lower edges of casing, being careful not to catch in boning.



- 10.** Stitch lining sections together same as for corset, leaving an opening in center of one back seam for turning. Clip curves if necessary.  
**STAYSTITCH** upper edge in direction of arrows. Staystitching will not be shown again in the following illustrations.

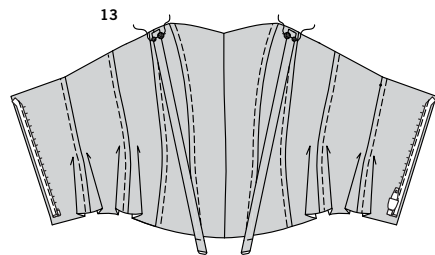


- 11. FOR VIEW A-** With **RIGHT** sides together and raw edges even, pin lining to corset along upper edge, matching seams. Stitch upper edge.  
**TRIM** seam; clip curves. Do not trim corners on back edges.

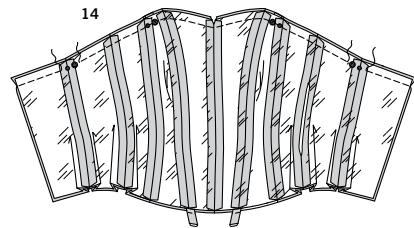


#### CONTINUE AS FOLLOWS FOR VIEW B

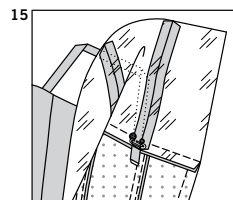
- 12.** Fold each strap (6) in half, lengthwise, having right sides together and raw edges even. Stitch long edges in a 3/8" (1cm) seam, leaving ends open. Turn strap; press. Baste raw edges together.



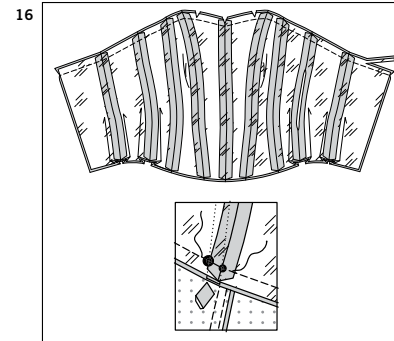
- 13.** On **OUTSIDE**, baste front ends of straps to upper edge of front, matching small and large dots. You will notice that the straps have extra allowance at the back edge...this is for adjustment.



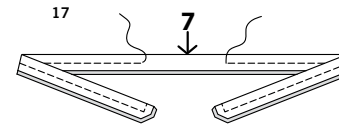
- 14.** With **RIGHT** sides together and raw edges even, pin lining to corset along upper edge, matching seams, small and large dots. Stitch upper edge, leaving an opening in each back between small and large dots, being careful not to catch in free edges of straps.  
**TIP-** It will be easier to insert straps if you give yourself a little wiggle room by stitching back to within 1/4" (6mm) of small and large dots.



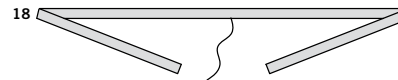
- 15.** Insert back ends of straps through openings in upper edge of back, matching small and large dots. Pin in place with a safety pin. Try on corset and adjust straps to fit. Stitch openings closed.



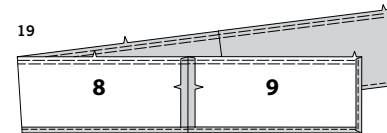
- 16. TRIM** seam and ends of straps; clip curves. Do not trim corners on back edges.



- 17.** Fold tie (7) in half lengthwise, having **RIGHT** sides together and raw edges even.  
Stitch in a 3/8" (1cm) seam, leaving an opening for turning.

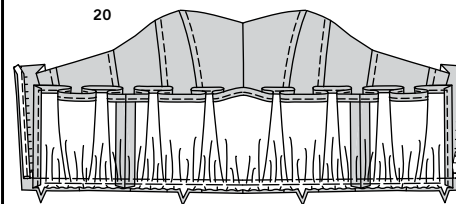


- 18.** Turn tie; press.  
**SLIPSTITCH** opening closed.  
Tie around waist when wearing corset.  
**TIP-** If you prefer, make thread loops for tie on side seams of corset.

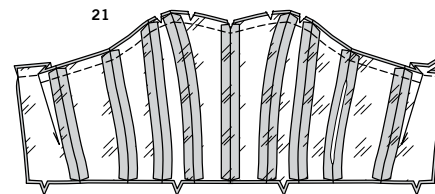


#### CONTINUE AS FOLLOWS FOR VIEW C

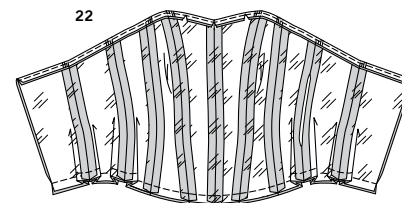
- 19. PEPLUM C-** Stitch peplum back (9) sections to peplum front (8) at sides, matching notches.  
**GATHER** upper edge between notches.  
Make a 5/8" (1.5cm) **NARROW HEM** on lower edge, followed by back edges.



- 20.** Pin peplum to lower edge of corset, matching centers, seams, and notches (back edges of corset will extend 5/8" (1.5cm) beyond finished edge of peplum).  
Pull up gathering stitches to fit, adjusting fullness evenly; baste.



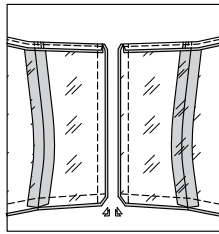
- 21.** With **RIGHT** sides together and raw edges even, pin lining to corset along upper edge, matching seams.  
Stitch upper edge, keeping unattached edges of peplum out of the way.  
**TRIM** seam; clip curves. Do not trim corners on back edges.



#### CONTINUE AS FOLLOWS FOR ALL VIEWS

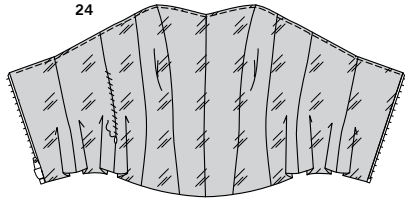
- 22. UNDERSTITCH** lining.  
With **RIGHT** sides together and raw edges even, pin lower raw edges of lining and corset together, matching seams.  
Stitch, being careful not to catch in free edges of straps for **View B** or peplum for **View C**.

23



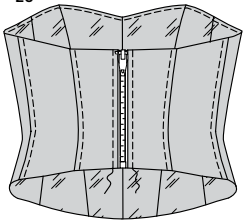
- 23.** Pin back opening edges together. Using an adjustable zipper foot, stitch along 5/8" (1.5cm) seamline.  
**TRIM** corners.

24

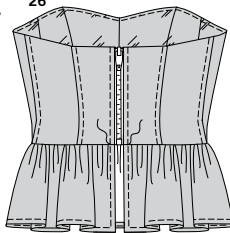


- 24.** Turn corset RIGHT side out through opening in back lining. **SLIPSTITCH** opening closed.

25



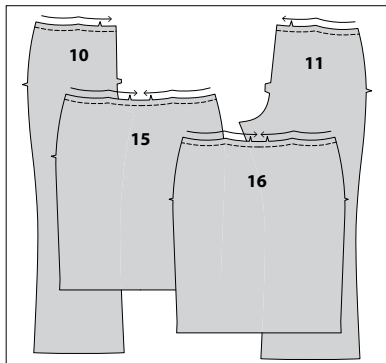
26



- 25. VIEWS A, B** - Turn lining to inside, rolling zipper teeth back in place; press. **TOPSTITCH** back 1/4" (6mm) from zipper seam. Fasten zipper.

- 26. VIEW C** - Turn lining to inside, turning out peplum and rolling zipper teeth back in place; press, pressing out peplum. **TOPSTITCH** back 1/4" (6mm) from zipper seam as far as waist seam. Fasten zipper.

1

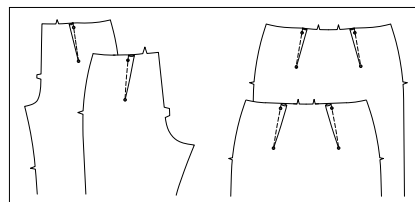


## PANTS D OR SKIRT E

**NOTE:** *Pants are worn 1" below waist.*

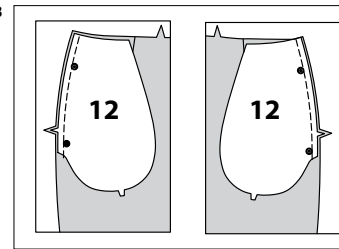
- 1.** **STAYSTITCH** upper edges of front (10 or 15) and back (11 or 16) sections in direction of arrows. Staystitching will not be shown again in the following illustrations.

2



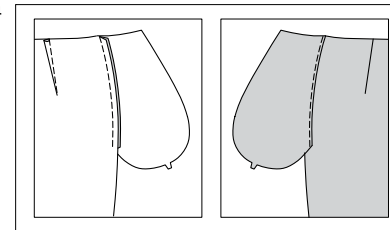
- 2.** Make **DARTS** in front and back, bringing broken lines together, matching small dots; press toward center.

3



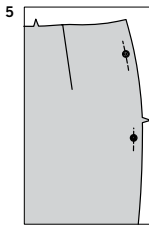
- 3.** Apply pockets to side edges of RIGHT front and back as follows: With RIGHT sides together, pin pocket (12) to pants or skirt, matching large dots and having raw edges even. Stitch in a 3/8" (1cm) seam.

4

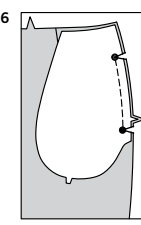


- 4.** Press seam toward pocket, pressing pocket out. **UNDERSTITCH** front pocket. Set RIGHT front and back aside for now.

5



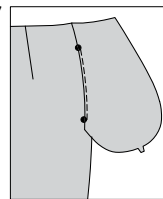
6



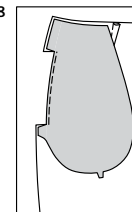
- 5.** To **REINFORCE** side edges of LEFT front, stitch along seamline for about 1" (2.5cm) on each side of each large dot, stitching through each large dot.

- 6.** Apply pockets to LEFT front, as follows: With RIGHT sides together, pin one pocket to side edge of LEFT front, matching large dots and having raw edges even. Stitch seam between large dots, back-stitching at large dots to reinforce seam. Clip seam to stitching at large dots, being careful not to cut through stitching.

7



8



- 7.** **UNDERSTITCH** front pocket between large dots.

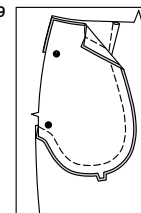
- 8.** Turn pocket to **INSIDE**, turning out seam allowances above and below clip.

- 9.** With RIGHT sides together, pin remaining pocket to LEFT front pocket, matching large dots, and having raw edges even. Stitch pockets together along side and lower edges.

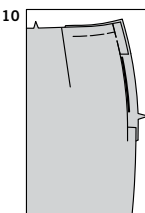
- 10.** On **OUTSIDE**, baste raw edges of LEFT front and pocket together along upper and side edges.

**NOTE:** *The zipper is longer than the zipper opening and will be adjusted after the zipper is inserted. Stitch the invisible zipper using an invisible zipper foot. Before you begin, be sure to line up your needle with the center of the invisible zipper foot or you may break your needle. When the coils are to the LEFT of the raw edge use the LEFT groove and when the coils are to the RIGHT of the raw edge use the RIGHT groove.*

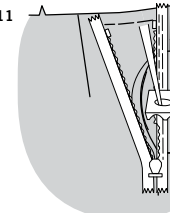
9



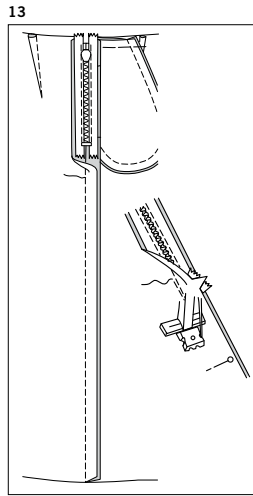
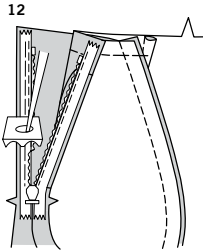
10



11

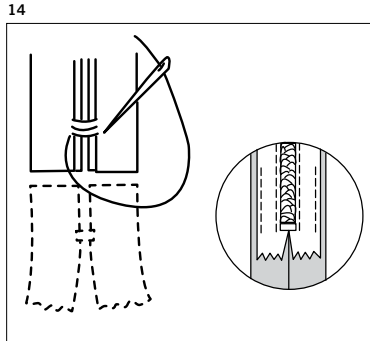


- 11.** Apply zipper to LEFT opening edges, as follows: Open zipper and press tape flat on **WRONG** side, unrolling coils. Do not press coils. (Use a low iron setting.) On **OUTSIDE**, pin LEFT side of zipper face down on left **FRONT** side of zipper opening. Have the coil along the seam line, the tape within the seam allowance and the top stop 3/4" (2cm) below upper edge, as shown. Hand-baste along center of the tape. Position zipper foot at top of zipper with LEFT groove of foot over coil. Stitch along tape to notch, being careful not to catch in opening edge of pocket. Back-stitch to reinforce.

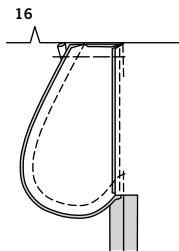
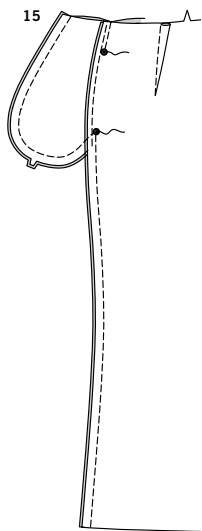


**12.** Pin remaining half of zipper to left BACK side of zipper opening in same manner. Make sure that upper edges of pants/skirt are even. Hand-baste along the center of the tape. Position zipper foot at top of zipper with RIGHT groove over the coil. Stitch along tape to the notch, back-stitching to reinforce.

**13.** Close zipper and check that it is invisible from the OUTSIDE. Pull free ends of zipper tape away from seam allowance. Pin remaining LEFT side seam together below zipper. Position zipper foot all the way to the LEFT so the needle goes down through the outer notch of the foot. Start stitching seam 1/4" (6mm) above lowest stitch and slightly to the LEFT, being careful not to catch in free edges of pocket. Stitch seam for about 3" (7.5cm). Stitch remainder of seam using your regular presser foot.

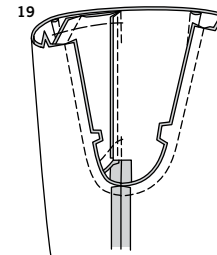
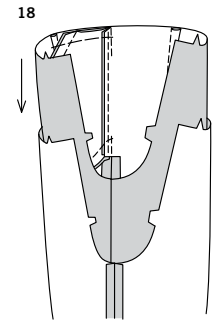
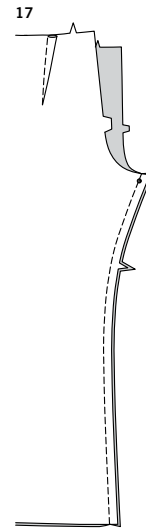


**14.** Since the zipper is longer than the opening, using a strong thread, hand-sew a few small stitches across ends of coils at end of opening. Trim away lower end of zipper tape to within 5/8" (1.5cm) of hand-stitches. If you prefer, open out each seam allowance at end of zipper and stitch tape to seam allowance.



**15.** Pin front to back at RIGHT side seam, matching large dots. Stitch, leaving an opening between large dots. Back-stitch at large dots to reinforce seam. Stitch pocket edges together along side and lower edges.

**16.** Clip pants back seam allowance at end of pocket. Press seam open below clip. Press pocket toward front. Baste upper raw edges together.

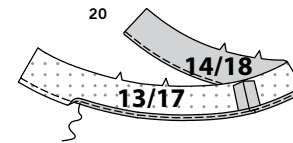


## CONTINUE AS FOLLOWS FOR PANTS D

**17.** Pin front to back at inner leg seams, matching notches and small dots. Stitch seam, stretching back to fit.

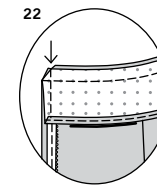
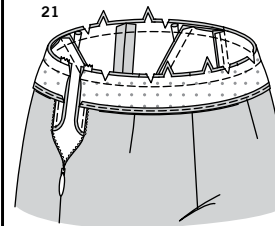
**18.** Insert one leg inside the other.

**19.** Pin center seam, matching inner leg seams and notches. Stitch. REINFORCE seam.



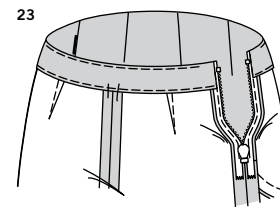
## CONTINUE AS FOLLOWS FOR VIEWS D, E

**20.** Apply fusible interfacing to WRONG sides of front facing (13 or 17) and back facing (14 or 18) sections following manufacturer's directions. Stitch facing sections together at RIGHT side seam. FINISH lower unnotched edge.

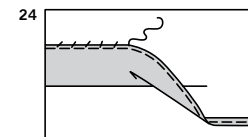


**21.** Open out LEFT side opening edges of pants/skirt, rolling zipper teeth away from opening edge. With RIGHT sides together, pin facing to upper edge matching centers and side seams. Stitch upper edge. TRIM seam; clip curves.

**22.** Pin back opening edges together. Using an adjustable zipper foot, stitch 1/2" (1.3cm) from back edges, keeping zipper teeth free. TRIM corners; do not trim center back edges.



**23.** UNDERSTITCH facing as far as possible. Turn facing and back edges to INSIDE, rolling zipper teeth back in place; press. TACK facing to seam allowances.



**24.** Press up 1-1/4" (3.2cm) hem. To finish the raw edge, stitch under 1/4" (6mm), zigzag, OR overlock/serge. SLIPSTITCH hem in place.



# Congrats!

You've completed your sewing adventure

---

**SHARE  
YOUR** LOOK



Post your pattern and tag us  
**@simplicity\_creative\_group** and **#simplicitypatterns**  
for a chance to be featured on our social media.

Look for more PDF patterns at [simplicity.com](https://www.simplicity.com)

Have a question or need help with your sewing project call us at  
1-888-588-2700



Simplicity ©2024 a division of IG Design Group Americas Inc. • Atlanta, GA 30342 USA [www.thedesigngroup.com](https://www.thedesigngroup.com) • All Rights Reserved. [www.simplicity.com](https://www.simplicity.com) • Made in the U.S.A. Fabriqué aux États-Unis.

To be used for individual private home use only and not for commercial or manufacturing purposes. • A usage privé seulement et non à des fins commerciales ou de production en série. • Para uso privado solamente, no se puede utilizar con propósitos de comercialización o de producción en serie.