

S9925

Simplicity



Designed and printed in USA.

easy-to-sew

Easy

MISSES' PANTS, KNIT TOP AND SHRUG

Suggested Fabrics: A,B in Stretch Knits only such as Cotton/Lycra, Interlock, Jersey, Rib Knits. See Pick-A-Knit® Rule. B also in Double Knits, Sweater Knits. C: Corduroy, Cottons, Crepe, Denim, Linens. **Interfacing:** Lightweight Fusible.

Notions: A: 1¼ yd. (1.1m) of ¼" (6mm) elastic. C: One 5" (13cm) zipper (cut to fit), two ½" (1.3cm) buttons.

Sizes	6	8	10	12	14	16	18	20	22	24
European	32	34	36	38	40	42	44	46	48	50

BODY MEASUREMENTS: Select pattern size based on body measurements

Bust	30½	31½	32½	34	36	38	40	42	44	46	Ins.
Waist	23	24	25	26½	28	30	32	34	37	39	"
Hip-9" below waist	32½	33½	34½	36	38	40	42	44	46	48	"
Back-neck to waist	15½	15¾	16	16¼	16½	16¾	17	17¼	17½	17¾	"

Top A	60**	¾	¾	¾	¾	¾	¾	¾	¾	¾	Yd.
-------	------	---	---	---	---	---	---	---	---	---	-----

Shrug B	60**	1¾	1¾	1¾	1¾	1¾	1¾	1¾	1¾	2	Yds.
---------	------	----	----	----	----	----	----	----	----	---	------

Interfacing	20"	-	¾	yd.
-------------	-----	---	---	-----

Pants C (sits 1" below waist)

45**	4¼	4¼	4¼	4¼	4¼	4¼	5	5	5	5	Yds.
60**	2¾	2¾	2¾	2¾	2¾	2¾	3	3	3	3	"

Interfacing	20"	-	¾	yd.
-------------	-----	---	---	-----

FINISHED GARMENT MEASUREMENTS (Includes Design and Wearing Ease)

A Bust	29	30	31	32½	34½	36½	38½	40½	42½	44½	Ins.
--------	----	----	----	-----	-----	-----	-----	-----	-----	-----	------

B Bust	37½	38½	39½	41	43	45	47	49	51	53	"
--------	-----	-----	-----	----	----	----	----	----	----	----	---

A Waist	25	26	27	28½	30½	32½	34½	36½	38½	40½	"
---------	----	----	----	-----	-----	-----	-----	-----	-----	-----	---

C Hip	36½	37½	38½	40	42	44	46	48	50	52	"
-------	-----	-----	-----	----	----	----	----	----	----	----	---

Width, lower edge

Top A	27	28	29	30½	32½	34½	36½	38½	40½	42½	Ins.
-------	----	----	----	-----	-----	-----	-----	-----	-----	-----	------

Width, each leg

Pants C	44½	45½	46	47	48½	49½	50½	52	53½	54½	Ins.
---------	-----	-----	----	----	-----	-----	-----	----	-----	-----	------

Finished back length from base of neck

Top A	18½	18½	19	19½	19½	19½	20	20½	20½	20½	Ins.
-------	-----	-----	----	-----	-----	-----	----	-----	-----	-----	------

Shrug B	15½	15½	16	16½	16½	16½	17	17½	17½	17½	"
---------	-----	-----	----	-----	-----	-----	----	-----	-----	-----	---

Finished side length from waist

Pants C (sits 1" below waist)	41½	41½	42	42½	42½	42½	43	43½	43½	43½	Ins.
-------------------------------	-----	-----	----	-----	-----	-----	----	-----	-----	-----	------

*with nap **without nap

Facile

PANTALON, HAUT ET BOLÉRO EN TRICOT POUR JEUNES FEMMES

Tissus Conseillés: A,B en tricot extensibles seulement tels que Coton/Lycra, Interlock, Jersey, Tricot à côtes. Voyez la Règle-Pour-Choisir-Un-Tricot®. B aussi en Tricot doubles, Tricot pour chandails. C: Velours côtelé, Cottons, Crêpe, Denim, Toiles de lin. **Entoilage:** Thermocollant léger.

Merci: A: 1.1m d'élastique de 6mm. C: 1 fermeture à glissière de 13cm (coupée pour ajuster), 2 boutons de 1.3cm.

Tailles	6	8	10	12	14	16	18	20	22	24
Françaises	34	36	38	40	42	44	46	48	50	52
Européennes	32	34	36	38	40	42	44	46	48	50

MESURES DU CORPS: Choisissez la taille du patron basée sur les mesures du corps

Poitrine	78	80	83	87	92	97	102	107	112	117	cm
----------	----	----	----	----	----	----	-----	-----	-----	-----	----

Taille	58	61	64	67	71	76	81	87	94	99	"
--------	----	----	----	----	----	----	----	----	----	----	---

Hanches (23cm au-dessous de la taille)

	83	85	88	92	97	102	107	112	117	122	cm
--	----	----	----	----	----	-----	-----	-----	-----	-----	----

Dos du cou à la taille	39.5	40	40.5	41.5	42	42.5	43	44	44	44.5	"
------------------------	------	----	------	------	----	------	----	----	----	------	---

Haut A	150cm*	0.7	0.7	0.7	0.7	0.7	0.7	0.7	0.7	0.7	m
--------	--------	-----	-----	-----	-----	-----	-----	-----	-----	-----	---

Boléro B	150cm*	1.3	1.4	1.4	1.4	1.5	1.5	1.5	1.6	1.6	1.8	m
----------	--------	-----	-----	-----	-----	-----	-----	-----	-----	-----	-----	---

Entoilage	51cm	-	0.8m
-----------	------	---	------

Pantalón C (repose à 2.5cm au-dessous de la taille)

115cm*	4.1	4.1	4.1	4.1	4.2	4.2	4.2	4.7	4.7	4.7	4.8	m
--------	-----	-----	-----	-----	-----	-----	-----	-----	-----	-----	-----	---

150cm*	2.5	2.5	2.5	2.5	2.5	2.6	2.9	2.9	2.9	3.0	"
--------	-----	-----	-----	-----	-----	-----	-----	-----	-----	-----	---

Entoilage	51cm	-	0.6m
-----------	------	---	------

MESURES DES VÊTEMENTS FINI (Motif et aisance de port compris)

A Poitrine	74	76	79	83	88	93	98	103	108	113	cm
------------	----	----	----	----	----	----	----	-----	-----	-----	----

B Poitrine	95	98	100	104	109	114	119	124	130	135	"
------------	----	----	-----	-----	-----	-----	-----	-----	-----	-----	---

A Taille	64	66	69	72	77	83	88	93	98	103	"
----------	----	----	----	----	----	----	----	----	----	-----	---

C Hanches	93	95	98	102	107	112	117	122	127	132	"
-----------	----	----	----	-----	-----	-----	-----	-----	-----	-----	---

Largeur à l'ourlet

Haut A	69	71	74	77	83	88	93	98	103	108	cm
--------	----	----	----	----	----	----	----	----	-----	-----	----

Largeur, chaque jambe

Pantalón C	113	115	117	119	123	126	129	132	135	138	cm
------------	-----	-----	-----	-----	-----	-----	-----	-----	-----	-----	----

Longueur finie – dos, votre nuque à l'ourlet

Haut A	47	47.5	48.5	49	50	50	51	51	52	53	cm
--------	----	------	------	----	----	----	----	----	----	----	----

Boléro B	39	40	41	41	42	43	43	44	44	45	"
----------	----	----	----	----	----	----	----	----	----	----	---

Longueur finie – côté, taille à l'ourlet

Pantalón C (repose à 2.5cm au-dessous de la taille)	105	106	107	107	108	109	109	110	110	111	cm
---	-----	-----	-----	-----	-----	-----	-----	-----	-----	-----	----

*avec sens **sans sens



A



B



C

Use the 1 inch (2.54cm) box to ensure you are using rule at 100%

Utilisez la boîte de 2.54 cm pour vous assurer d'utiliser la règle à 100%.

Utilizar un cuadrado de 2.54 cm para asegurarse de estar usando la regla al 100%.

PICK-A-KNIT® RULE

FOR THIS PATTERN - 4" (10 cm) OF KNIT FABRIC MUST STRETCH CROSSWISE FROM HERE POUR CE PATRON - LE JERSEY DOIT S'ETIRER DANS LA LARGEUR DE 4" (10 cm) DEPUIS ICI PARA ESTE PATRON - LAS MALLAS DEBEN ESTIRARSE A LO ANCHO POR 4" (10 cm) DESDE AQUI



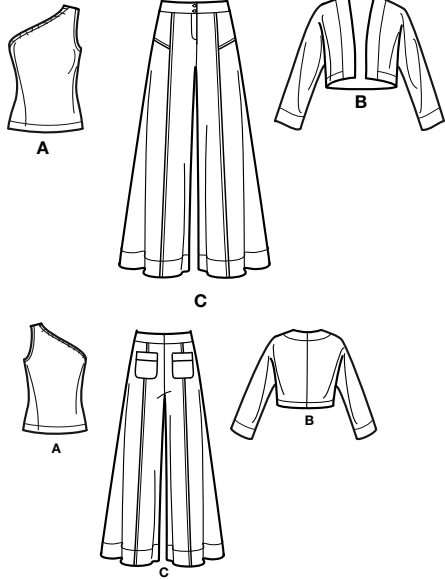
TO HERE 50% JUSTE LA 50% HASTA ALLA 50%



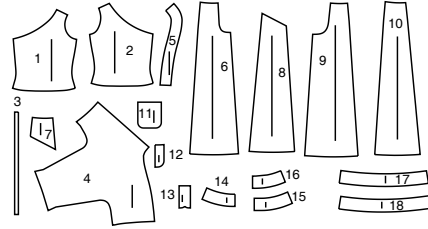
When using the Pick-A-Knit® rule to measure your fabrics stretch capacity, rule must be viewed or printed at 100%.
 Quand vous utilisez la règle Pick-A-Knit® pour mesurer la capacité d'élasticité des tissus, la règle doit être visible ou imprimée à 100%.
 Al utilizar la regla Pick-A-Knit® para medir la capacidad de elasticidad de las telas, la regla debe estar visible o impresa al 100%.

Simplicity® S9925

Thank you for purchasing this Simplicity pattern.
We made every effort to provide you with a high quality product.



18 PIECES



- 1 Front-A
- 2 Back-A
- 3 Elastic Guide for Neck-A
- 4 Front and Back-B
- 5 Front and Back Facing-B
- 6 Front-C
- 7 Upper Side Front-C
- 8 Lower Side Front-C
- 9 Back-C
- 10 Side Back-C
- 11 Back Pocket-C
- 12 Fly Facing-C
- 13 Fly-C
- 14 Right Front Waistband-C
- 15 Left Front Waistband-C
- 16 Back Waistband-C
- 17 Front Hem Facing-C
- 18 Back Hem Facing-C

The Pattern

- SYMBOLS**
- ↔ GRAIN LINE Place on straight grain of fabric parallel to selvage
 - ⇄ PLACE SOLID LINE on fold of fabric.
 - CENTER FRONT OR BACK of garment.
 - ∇ NOTCHES
 - DOTS
 - CUTTING LINE
 - == LENGTHEN OR SHORTEN LINES

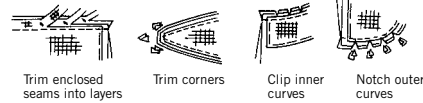
SEAM ALLOWANCE: 5/8" (1.5cm) unless otherwise stated is included but not printed on MULTI-SIZE PATTERNS. Mark your size with colored felt tip pen. See chart on tissue for how to use MULTI-SIZE PATTERNS.

- ADJUST IF NEEDED**
- Make adjustments before placing pattern on fabric.
- TO LENGTHEN:** Cut pattern between lengthen or shorten lines. Spread pattern evenly, the amount needed and tape to paper.
- TO SHORTEN:** At lengthen or shorten lines, make an even pleat taking up amount needed. Tape in place.

When lengthen or shorten lines are not given, make adjustments at lower edge of pattern.

Sewing

- SEW garment following **Sewing Directions**.
- PIN or machine-baste seams matching notches.
- STITCH 5/8" (1.5 cm) seams unless otherwise stated.
- PRESS seams open unless otherwise indicated clipping when necessary so seams will lie flat.
- TRIM seams to reduce bulk, as shown below.



General Directions

Cutting/Marking

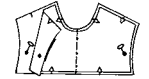
BEFORE CUTTING:
PRESS pattern pieces with a warm dry iron. PRE-SHRINK fabric by pre-washing washables or steam-pressing non-washables.

CIRCLE your cutting layout.
PIN pattern to fabric as shown in Cutting Layouts.

- FOR DOUBLE THICKNESS: Fold fabric with RIGHT sides together.
- FOR SINGLE THICKNESS: Place fabric RIGHT side up.
- FOR PILE, SHADED OR ONE WAY DESIGN FABRICS: Use "with nap" layouts

AFTER CUTTING:
Transfer markings to WRONG side of fabric before removing pattern. Use pin and chalk method or dressmaker's tracing paper and wheel.

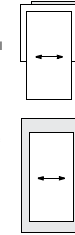
- To Quick Mark:**
- Snip edge of fabric to mark notches, ends of fold lines and center lines.
 - Pin mark dots.



SPECIAL CUTTING NOTES

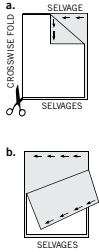
★ If layout shows a piece extending past fold, cut out all pieces except piece that extends.

Open cut fabric to single thickness. Cut extending piece on RIGHT side of fabric in position shown.



✱ Mark small arrows along both selvages indicating direction of nap or design. Fold fabric crosswise with RIGHT sides together, and cut along fold (a).

Turn one fabric layer around so arrows on both layers go in the same direction. Place RIGHT sides together (b).



Cutting Layouts

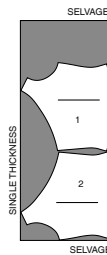
- WRONG SIDE OF FABRIC
- RIGHT SIDE OF FABRIC
- PATTERN PIECE WITH PRINTED SIDE UP
- PATTERN PIECE WITH PRINTED SIDE DOWN
- ★ SEE SPECIAL CUTTING NOTES

POSITION OF PATTERN PIECES MAY VARY SLIGHTLY ACCORDING TO YOUR PATTERN SIZE

TOP A

USE PIECES 1 2

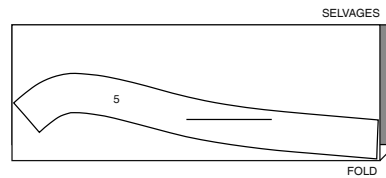
60" (150CM) WITH NAP ALL SIZES



INTERFACING B

USE PIECE 5

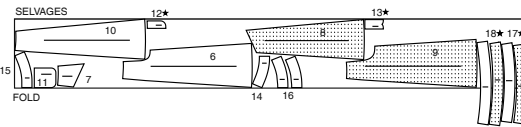
20" (51CM) ALL SIZES



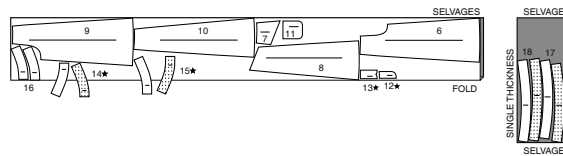
PANTS C

USE PIECES 6 7 8 9 10 11 12 13 14 15 16 17 18

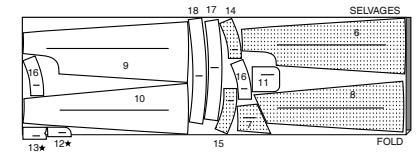
45" (115CM) WITH NAP SIZES 6-8-10-12-14-16



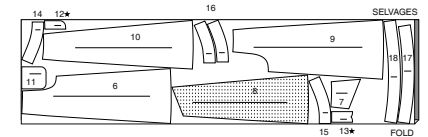
45" (115CM) WITH NAP SIZES 18-20-22-24



60" (150CM) WITH NAP SIZES 6-8-10-12-14-16



60" (150CM) WITH NAP SIZES 18-20-22-24



SHRUG B

USE PIECES 4 5

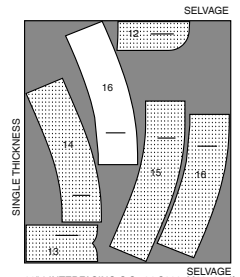
60" (150CM) WITH NAP ALL SIZES



INTERFACING C

USE PIECES 12 13 14 15 16

20" (51CM) ALL SIZES



Sewing Directions



SIMPLY THE BEST SEWING TECHNIQUES...

FOR KNITS

- Use a ball point or stretch needle.
- Decrease pressure on presser foot for heavy sweater knits; increase pressure for lingerie knits.
- Stretch knits need seams that are supple enough to “give” with the fabric. You can sew them with straight stitches (stretching the fabric slightly as you sew), narrow zig-zag stitches or one of the stretch stitches built into many conventional machines, or on your serger.
- Some knits require very little or no pressing while sewing. Use the appropriate temperature setting. Press lightly or use steam.
- To prevent shoulder seams from stretching, pin center of hem tape, clear elastic, or twill tape along seam line on front shoulder edges, then stitch the shoulder seams.
- Raw edges of hem and facings are left raw, unless using a serger.

Sewing methods in **BOLD TYPE** have Sewing Tutorial Video available. Scan QR CODE to watch videos:

EDGE STITCH - see Machine Stitches: “how to edgestitch” video.

FINISH - see Seams: “how to finish seam allowances” video.

NARROW HEM - see Hems: “sewing narrow hems” video.

REINFORCE - see Machine Stitches: “how to reinforce” video.

STAYSTITCH - see Machine Stitches: “how to do stay-stitching” video.

STITCH IN THE DITCH - see Machine Stitches: “how to stitch in the ditch” video.

TACK - See Hand-Stitching: “how to tack” video.

TOPSTITCH - see Machine Stitches: “how to topstitch” video.

TRIM - see How to Sew: Trim, Clip, and Layer Seams” video.

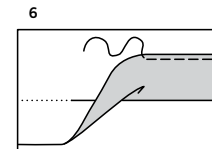
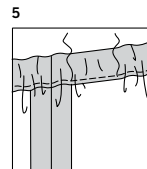
UNDERSTITCH - see Machine Stitches: “how to understitch” video.

PATTERN PIECES WILL BE IDENTIFIED BY NUMBERS THE FIRST TIME THEY ARE USED.

STITCH 5/8" (1.5CM) SEAMS WITH RIGHT SIDES TOGETHER UNLESS OTHERWISE STATED.

TOP A

1. Stitch FRONT (1) to BACK (2) at shoulders and sides.
2. Make a 5/8" (1.5cm) **NARROW HEM** on left armhole.
3. Press neck edge to inside along casing line. Press under 1/4" (6mm) on inner raw edge. Stitch close to lower edge of casing, leaving an opening on back near right side seam to insert elastic.
4. Cut a piece of elastic the length of elastic guide for neck (13). Insert elastic through opening in casing. Overlap ends 5/8" (1.5cm). Stitch securely together, as shown; trim ends.

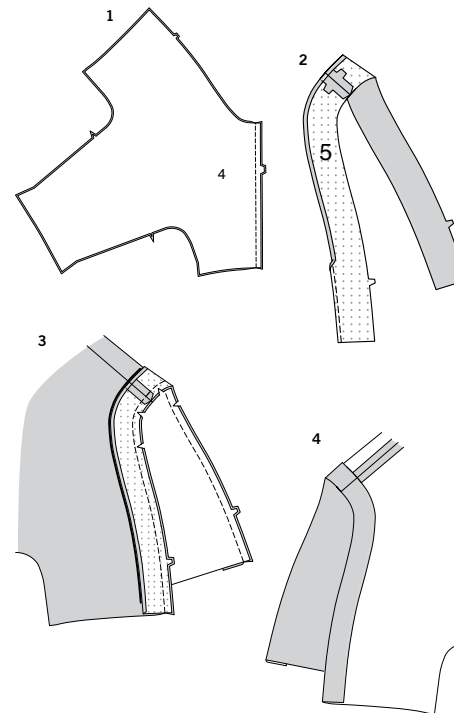
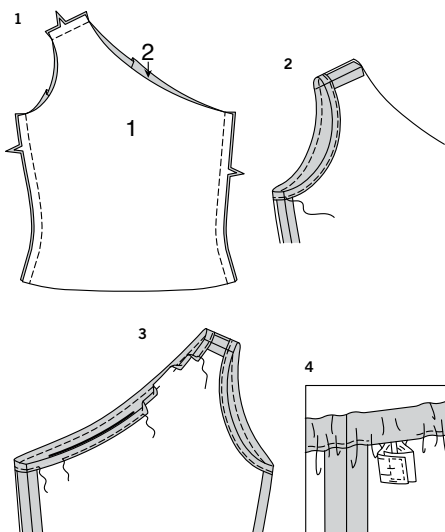


5. Stitch opening close, stretching elastic as you stitch. Distribute fullness evenly.
TIP-To secure elastic so it won't twist in wearing, stitch through all thicknesses of casing in the groove of each seam.
6. Press up 1-1/2" (3.8cm) on lower edge of top. Machine-stitch 1/4" (6mm) from raw edge.

SEWING TUTORIALS

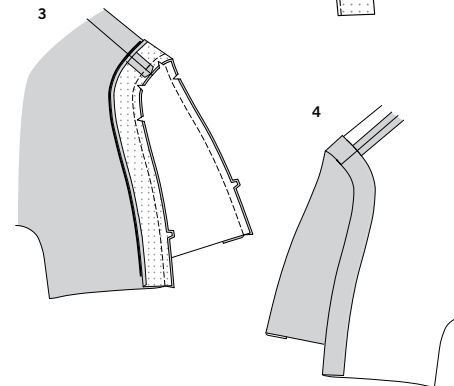


Build your skills viewing short, easy-to-follow videos at simplicity.com/sewingtutorials



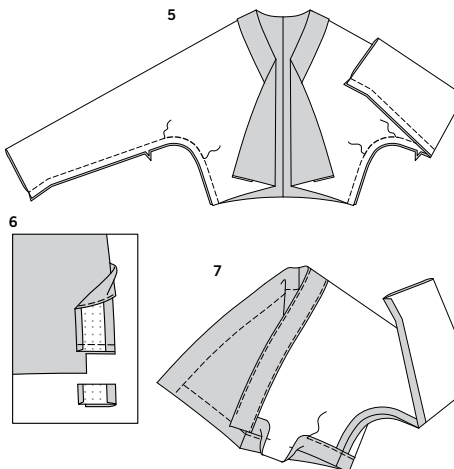
B SHRUG

1. Stitch center back seam of front and back (4) sections, matching triple notches.
2. Apply interfacing to **WRONG** side of front and back facing (5) sections. Stitch sections together at center back seam, matching notches. Stitch 1/4" (6mm) from edge, turn under along stitching and press.



3. With right sides together and raw edges even, pin facing to neck edge of shrug, matching seams. Stitch.
TRIM seam; clip curves

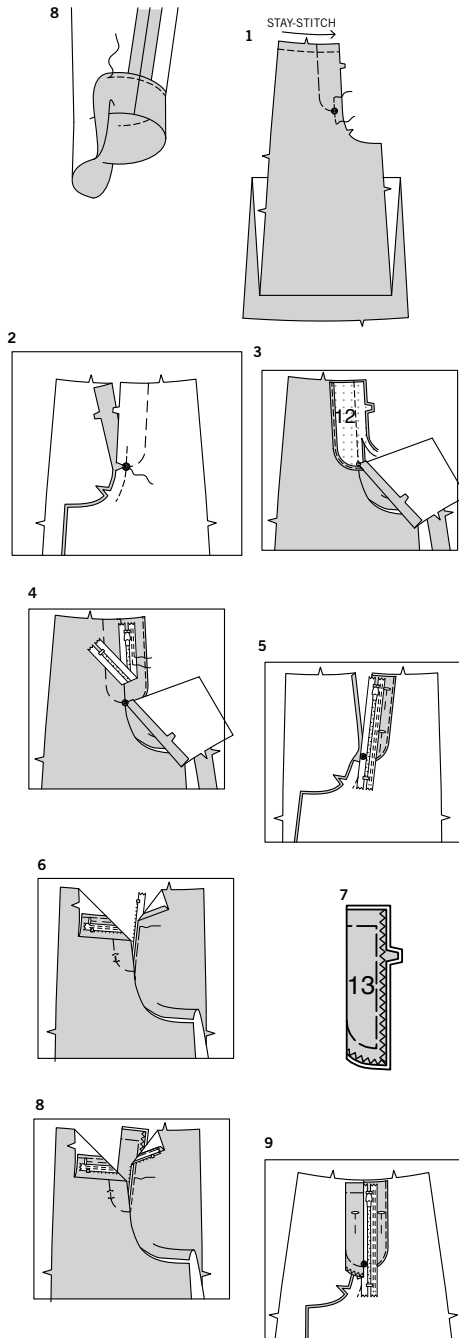
4. Turn facing to inside; press.



5. With right sides together, fold shrug along shoulder and overarm, matching notches and having raw edges even. Stitch entire underarm seam, matching notches.
REINFORCE curve. Clip curves if necessary.

6. Turn facing to **OUTSIDE**. Stitch across facing exactly 1-1/2" (3.8cm) above lower edge. Trim facing close to stitching. Trim shrug to within 5/8" (1.5cm) of inner edge of facing.

7. **UNDERSTITCH** facing as far as possible. Turn facing to **INSIDE**; press, pressing up 1-1/2" (3.8cm) hem. Pin facing in place; **EDGE STITCH** inner pressed edge. Stitch hem in place 1/4" (6mm) from raw edge between facing stitching.
TIP- If you prefer, hand-baste facing in place on **INSIDE** and **TOPSTITCH** on **OUTSIDE**.



8. Press under 2-1/4" (5.7cm) on lower edge of sleeve. Stitch hem in place 1/4" (6mm) from raw edge.

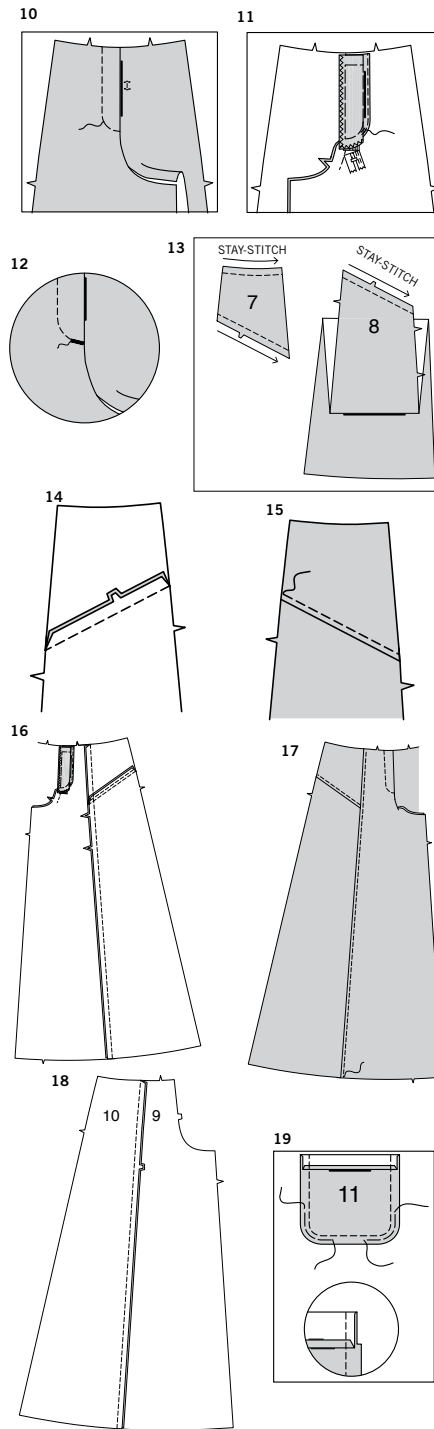
PANTS C

NOTE: *Pants are worn 1" (2.5cm) below waist.*

1. **STAYSTITCH** upper edge of front (6) sections in direction of arrows. Transfer stitching line on right front to **OUTSIDE** with a water-soluble fabric marking pen OR by hand-basting. This will serve as a guide for the fly stitching later. To **REINFORCE** right front, stitch along seam line for about 1" (2.5cm) on each side of large dot, stitching through large dot.
2. With **RIGHT** sides together, pin front sections together, matching large dots. Stitch center front seam between notch and large dot. Back-stitch at dot to reinforce seam.
3. Apply fusible interfacing to **WRONG** side of fly facing (12), following manufacturer's directions. **FINISH** outer edge of right fly facing. Pin fly facing to right front. Stitch. **TRIM. UNDERSTITCH** fly facing. Turn facing to inside.

NOTE: *The zipper is longer than the zipper opening and will be adjusted after the zipper is inserted.*

4. Open out fly. Place closed zipper face down over fly with tab end of zipper 1" (2.5cm) below upper edge and zipper tape extending 1/4" (6mm) over fly seam, as shown. Stitch zipper on **RIGHT** edge of tape from upper edge to lower edge of fly, as shown, using an adjustable zipper foot. Lower end of zipper will extend below lower end of fly. **DO NOT** trim away excess at this time.
5. Turn fly to **INSIDE**; press. Pin fly in place. Press under 3/8" (1cm) on **LEFT** front edge above large dot.
6. Open zipper. Pin **LEFT** front over zipper tape close to teeth. Baste. When zipper is closed, the **RIGHT** front will lap 1/4" (6mm) over **LEFT** front and large dots at lower end of opening should match. Close zipper and make sure zipper is aligned in both fronts.
7. Apply fusible interfacing to wrong side of fly (13). Fold fly in half lengthwise, with **WRONG** sides together, having raw edges even. Machine-baste raw edges. Press. Finish notched edge with a zig-zag stitch or overlock/serge.
8. Open zipper. Pin **LEFT** front edge over notched edge of underlap, having upper edges even and coil just over seam line. Baste through all thicknesses from upper edge to large dot. Close zipper and lightly press in place using a press cloth. On **OUTSIDE**, check to make sure that the fly and underlap lay smoothly in place. Open zipper and stitch **LEFT** side in place as basted, using an adjustable zipper foot.
9. Close zipper. On **INSIDE**, fold underlap back and pin out of the way so that it will not get caught in the fly stitching.



10. On **OUTSIDE**, hand-baste fly in place along the marked stitching line. Remove pin from foot. Stitch fly in place as basted, using an adjustable zipper foot; back-stitch at lower end to reinforce. Remove basting.

11. Turn underlap back in place. On **INSIDE**, hand-tack fly and underlap together at lower edge, as shown. Trim away excess zipper tape even with lower edge of fly.

12. On **OUTSIDE**, machine-stitch a bar tack across lower end of fly through all thicknesses. **TIP-** Encase lower end of zipper between the folds of a small piece of bias

13. **STAYSTITCH** upper and lower edge of upper side front (7) sections, in direction of arrows. **STAYSTITCH** upper edge of lower side front (8) sections, in same manner.

14. Stitch lower front to upper front, matching double notches. Press seam toward upper front.

15. **TOPSTITCH** lower edge of upper front.

16. Stitch side front to front, matching single notches. Press seam toward front.

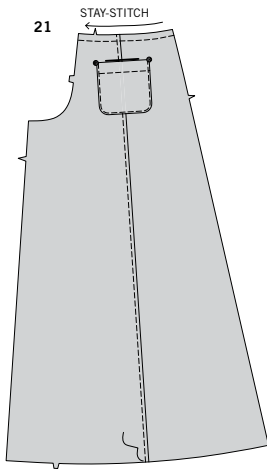
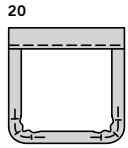
17. **TOPSTITCH** inner seam of front, as shown.

18. Stitch back (9) to side back (10), matching double notches. Press seam toward back.

19. Press under 1/4" (6mm) on upper edge of pocket (11) sections. Turn upper edge to **OUTSIDE** along foldline, forming facing. Stitch along seam line on raw edges. To ease curved edge of pocket, stitch 1/4" (6mm) **INSIDE** the seam line, using a long machine-stitch. Trim seam allowance in the facing area to 1/4" (6mm).

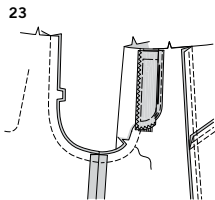
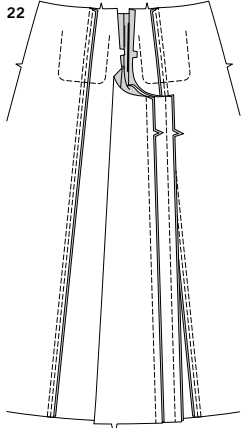
S9925

4 of 4



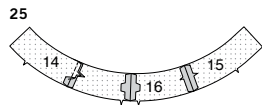
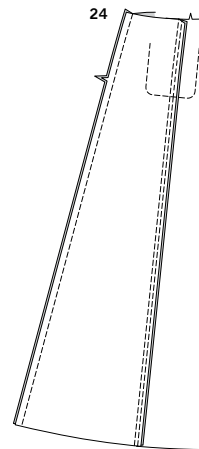
20. Turn corners RIGHT side out, turning facing to the WRONG side; press, pressing under raw edges along stitching. Pull up ease stitches to shape the curve. To eliminate bulk, notch out fullness in seam allowance along curves as far as ease stitches. Baste facing close to inner edge. On outside, **TOPSTITCH** as basted.

21. **STAYSTITCH** upper edge of back, in direction of arrow. **TOPSTITCH** inner seam of back, as shown. Pin pocket to back, matching large dots. **EDGE**STITCH side and lower edges.

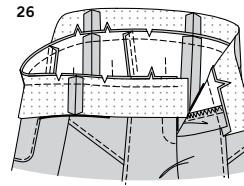


22. Stitch front to back at inner seams.

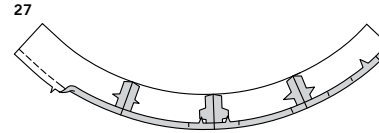
23. Pin remainder of center seam, matching inner leg seams and notches. Stitch. **REINFORCE** seam.



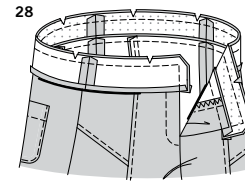
25. Apply fusible interfacing to wrong side of right front waistband (14), left front waistband (15), and back waistband (16) sections. Stitch center back seam of back waistband sections, matching triple notches. Stitch left and right waistbands to back, matching single notches. The remaining waistband sections will be used as facings.



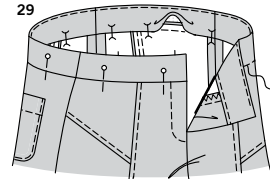
26. With RIGHT sides together, pin waistband to upper edge of pants, matching seams, centers front and stitching lines (front edges of waistband will extend 5/8" (1.5cm) beyond finished edges of pants). Stitch. **TRIM** seam; clip curves where necessary. Press seam toward band.



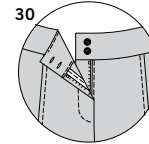
27. Stitch seams of waistband facing sections. Stitch 1/2" (1.3cm) from lower unnotched edge. Press under along stitching, easing in fullness along curves.



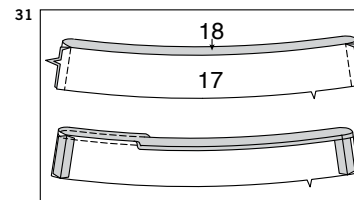
28. With right sides together and raw edges even, pin facing to waistband, matching seams and centers. Stitch front and upper edges. **TRIM** seam and corners. Clip curves where necessary.



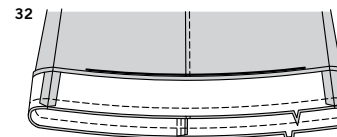
29. **UNDERSTITCH** facing as far as possible. Turn facing to INSIDE; press. Pin pressed edge of facing 1/8" (3mm) over seam, placing pins on OUTSIDE. On OUTSIDE, **STITCH IN THE DITCH** or groove of seam, catching in facing on INSIDE along seam line. **TIP** - To conceal the stitches in the ditch or groove of seam, try using a zipper foot, spreading the pants and waistband away from the seam with your fingers.



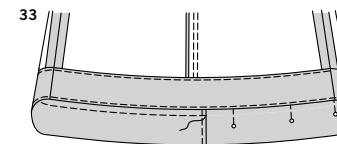
30. Make buttonholes on RIGHT end of waistband at markings. Lap RIGHT waistband over LEFT, matching centers front. Sew buttons to LEFT end of waistband under buttonholes.



31. Stitch front hem facing (17) to back hem facing (18), matching notches. Stitch 1/4 (6mm) from unnotched edge. Turn under along stitching and press.



32. With right sides together and raw edges even, pin facing to lower edge of pants, matching seams, and notches. Stitch. **TRIM** seam.



33. **UNDERSTITCH** facing. Turn facing to inside; press. Pin facing in place and **EDGE**STITCH close to inner pressed edge. **TIP** - If you prefer, hand-baste facing in place on INSIDE and **TOPSTITCH** on OUTSIDE.



Congrats!

You've completed your sewing adventure

**SHARE
YOUR** LOOK



Post your pattern and tag us
@simplicity_creative_group and **#simplicitypatterns**
for a chance to be featured on our social media.

Look for more PDF patterns at [simplicity.com](https://www.simplicity.com)

Have a question or need help with your sewing project call us at
1-888-588-2700



Simplicity ©2024 a division of IG Design Group Americas Inc. • Atlanta, GA 30342 USA www.thedesigngroup.com • All Rights Reserved. www.simplicity.com • Made in the U.S.A. Fabriqué aux États-Unis.

To be used for individual private home use only and not for commercial or manufacturing purposes. • A usage privé seulement et non à des fins commerciales ou de production en série. • Para uso privado solamente, no se puede utilizar con propósitos de comercialización o de producción en serie.