

S9921

Simplicity

easy-to-sew



A



B



A

Easy

Facile

MISSES' TOP WITH SLEEVE VARIATIONS

Suggested Fabrics: Cotton Lawn, Dotted Swiss, Gauze, Lace, Novelty Sheer, Voile.
Contrast in Cotton Blends, Crepe de Chine, Linen Blends, Poplin, Shirtings.

Notions: A: Four ½" (1.3cm) buttons.

Sizes	8	10	12	14	16	18	20	22	24	26
European	34	36	38	40	42	44	46	48	50	52

BODY MEASUREMENTS: Select pattern size based on body measurements

Bust	31½	32½	34	36	38	40	42	44	46	48	Ins.
Waist	24	25	26½	28	30	32	34	37	39	41½	"
Hip-9" below waist	33½	34½	36	38	40	42	44	46	48	50	"
Back-neck to waist	15¾	16	16¼	16½	16¾	17	17¼	17¾	17½	17¾	"

Top A	45**	2%	2%	2%	2¾	2¾	2¾	2¾	3%	3%	Yds.
	60**	2¼	2¼	2¼	2¼	2%	2%	2%	2%	2½	"

Contrast (Front, Back, Cuffs, Bow)

45**	1%	1%	1¾	1¾	1¾	1¾	1¾	1¾	2%	2%	Yds.
60**	1½	1½	1½	1½	1%	1%	1%	1%	1%	1%	"

Top B	45**	2	2	2	2	2½	2½	2½	2½	2½	Yds.
	60**	1%	1¾	1¾	1¾	1¾	2	2	2	2	"

Contrast (Front, Back, Sleeve Bands) - 45, 60 - 1% yds.**

FINISHED GARMENT MEASUREMENTS (Includes Design and Wearing Ease)

A,B Bust	58	59	60½	62½	64½	66½	68½	70½	72½	74½	Ins.
Width, lower edge											
Top A,B	58	59	60½	62½	64½	66½	68½	70½	72½	74½	Ins.
Finished back length from base of neck											
Top A,B	25¾	26	26¼	26½	26¾	27	27¼	27½	27¾	28	Ins.

*with nap **without nap

HAUT AVEC VARIATIONS DE MANCHES POUR JEUNES FEMMES

Tissus Conseillés: Linon de coton, Plumetis, Gaze, Dentelle, Tissus fantaisie transparent, Voile. **Contraste en Cotonnades, Crêpe de chine, Lin mélangés, Popeline, Shirtings.**

Mercerie: A: 4 boutons de 1.3cm.

Tailles	8	10	12	14	16	18	20	22	24	26
Françaises	36	38	40	42	44	46	48	50	52	54
Européen	34	36	38	40	42	44	46	48	50	52

MESURES DU CORPS: Choisissez la taille du patron basée sur les mesures du corps

Poitrine	80	83	87	92	97	102	107	112	117	122	cm
Taille	61	64	67	71	76	81	87	94	99	106	"
Hanches (23cm au-dessous de la taille)	85	88	92	97	102	107	112	117	122	127	cm
Dos du cou à la taille	40	40.5	41.5	42	42.5	43	44	44	44.5	44.5	"

Haut A	115cm*	2.4	2.4	2.4	2.5	2.5	2.5	2.5	2.9	2.9	m
	150cm*	2.1	2.1	2.1	2.1	2.2	2.2	2.2	2.2	2.3	"

Contrast (Devant, Dos, Poignets, Nœud)

115cm*	1.5	1.5	1.5	1.6	1.6	1.6	1.6	1.6	2.6	2.6	m
150cm*	1.4	1.4	1.4	1.4	1.4	1.5	1.5	1.5	1.5	1.5	"

Haut B	115cm*	1.8	1.8	1.8	1.8	1.9	1.9	2.2	2.2	2.2	m
	150cm*	1.5	1.5	1.6	1.6	1.6	1.6	1.8	1.8	1.8	"

Contrast (Devant, Dos, Bandes de manches) - 115, 150cm* - 1.3m.

MESURES DES VÊTEMENTS FINI (Motif et aisance de port compris)

A,B Poitrine	147	150	154	159	164	169	174	179	184	189	cm
Largeur à l'ourlet											
Haut A,B	147	150	154	159	164	169	174	179	184	189	cm
Longueur finie - dos, votre nuque à l'ourlet											
Haut A,B	65	66	67	67	68	69	69	70	70	71	cm

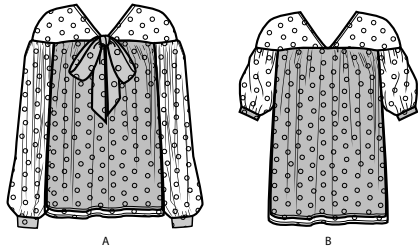
*avec sens **sans sens



A,B

Simplicity® S9921

Thank you for purchasing this Simplicity pattern.
We made every effort to provide you with a high quality product..

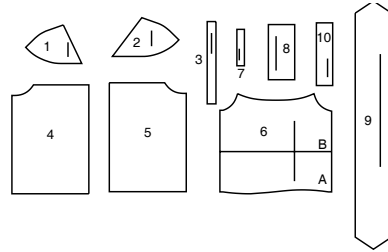


A B



A B

10 PIECES



- 1 Yoke Front-A,B
- 2 Yoke Back-A,B
- 3 Neck Facing-A,B
- 4 Front-A,B
- 5 Back-A,B
- 6 Sleeve-A,B
- 7 Continuous Lap-A
- 8 Cuff-A
- 9 Bow-A
- 10 Sleeve Band-B

General Directions

The Pattern

- SYMBOLS**
- GRAIN LINE Place on straight grain of fabric parallel to selvage
 - PLACE SOLID LINE on fold of fabric.
 - CENTER FRONT OR BACK of garment.
 - NOTCHES
 - DOTS
 - CUTTING LINE
 - LENGTHEN OR SHORTEN LINES

SEAM ALLOWANCE: 5/8" (1.5cm) unless otherwise stated is included but not printed on MULTI-SIZE PATTERNS. Mark your size with colored felt tip pen. See chart on tissue for how to use MULTI-SIZE PATTERNS.

ADJUST IF NEEDED
Make adjustments before placing pattern on fabric.

TO LENGTHEN:
Cut pattern between lengthen or shorten lines. Spread pattern evenly, the amount needed and tape to paper.

TO SHORTEN:
At lengthen or shorten lines, make an even pleat taking up amount needed. Tape in place.

When lengthen or shorten lines are not given, make adjustments at lower edge of pattern.

Cutting/Marking

BEFORE CUTTING:
PRESS pattern pieces with a warm dry iron. PRE-SHRINK fabric by pre-washing washables or steam-pressing non-washables.

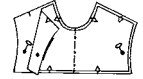
CIRCLE your cutting layout.
PIN pattern to fabric as shown in Cutting Layouts.

- FOR DOUBLE THICKNESS: Fold fabric with RIGHT sides together.
- FOR SINGLE THICKNESS: Place fabric RIGHT side up.
- FOR PILE, SHADED OR ONE WAY DESIGN FABRICS: Use "with nap" layouts

AFTER CUTTING:
Transfer markings to WRONG side of fabric before removing pattern. Use pin and chalk method or dressmaker's tracing paper and wheel.

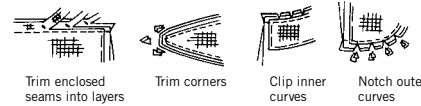
To Quick Mark:

- Snip edge of fabric to mark notches, ends of fold lines and center lines.
- Pin mark dots.



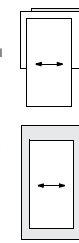
Sewing

- SEW garment following **Sewing Directions**.
- PIN or machine-baste seams matching notches.
- STITCH 5/8" (1.5 cm) seams unless otherwise stated.
- PRESS seams open unless otherwise indicated clipping when necessary so seams will lie flat.
- TRIM seams to reduce bulk, as shown below.

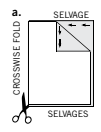


SPECIAL CUTTING NOTES

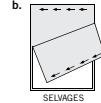
★ If layout shows a piece extending past fold, cut out all pieces except piece that extends.



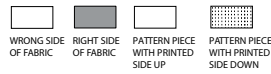
✱ Mark small arrows along both selvages indicating direction of nap or design. Fold fabric crosswise with RIGHT sides together, and cut along fold (a).



Turn one fabric layer around so arrows on both layers go in the same direction. Place RIGHT sides together (b).



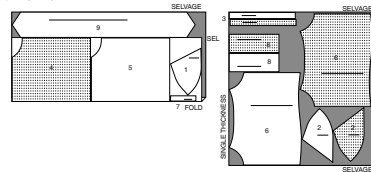
Cutting Layouts



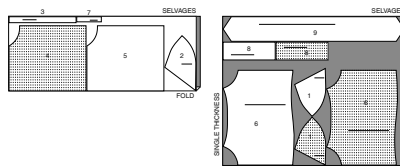
POSITION OF PATTERN PIECES MAY VARY SLIGHTLY ACCORDING TO YOUR PATTERN SIZE

TOP A
USE PIECES 1 2 3 4 5 6 7 8 9

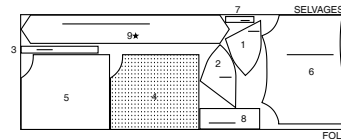
45" (115CM) WITH NAP
SIZES 8 10 12 14 16 18 20 22



45" (115CM) WITH NAP
SIZES 24 26

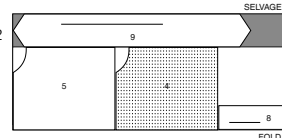


60" (150CM) WITH NAP
ALL SIZES

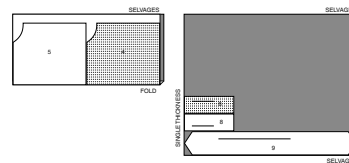


CONTRAST: BODY, CUFFS, BOW
USE PIECES 4 5 8 9

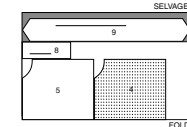
45" (115CM) WITH NAP
SIZES 8 10 12 14 16 18 20 22



45" (115CM) WITH NAP
SIZES 24 26

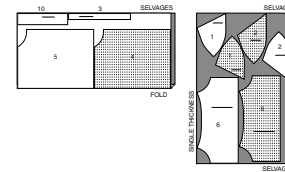


60" (150CM) WITH NAP
ALL SIZES

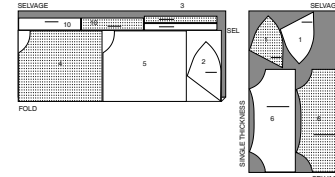


TOP B
USE PIECES 1 2 3 4 5 6 10

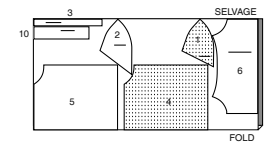
45" (115CM) WITH NAP
SIZES 8 10 12 14 16 18



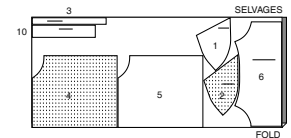
45" (115CM) WITH NAP
SIZES 20 22 24 26



60" (150CM) WITH NAP
SIZES 8 10 12 14 16 18

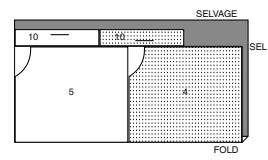


60" (150CM) WITH NAP
SIZES 20 22 24 26



CONTRAST: BODY, BANDS
USE PIECES 4 5 10

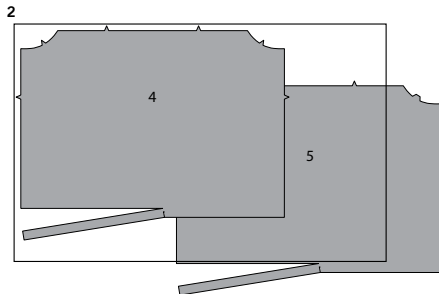
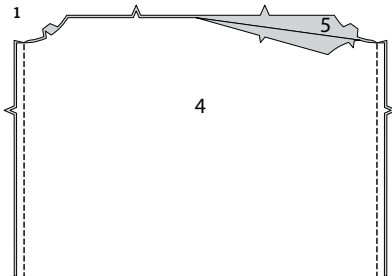
45" to 60" (115CM to 150CM) WITH NAP
ALL SIZES



SEWING TUTORIALS



Build your skills viewing short, easy-to-follow videos at simplicity.com/sewingtutorials



Sewing Directions

FABRIC KEY **RIGHT SIDE** **WRONG SIDE** **INTERFACING** **LINING** **LINING**

Sewing methods shown in *ITALICS* are defined below:

EASE/GATHER- Loosen needle tension slightly. With **RIGHT** side up, stitch 5/8" (1.5cm) from cut edge using a long stitch. Stitch again 1/4" (6mm) from the first stitching within the seam allowance.

NARROW HEM- Press under hem allowance as indicated on tissue pattern. To form narrow hem, tuck under raw edge to meet crease. Press. Stitch hem in place.

UNDERSTITCH- Press facing and seam away from garment, stitching through facing and seam allowances close to seam.

SLIPSTITCH - Slide needle through a folded edge, then pick up a thread of underneath fabric.

TOPSTITCH - On outside, stitch 1/4" (6mm) from edge, seam or previous stitching, using presser foot as guide, or stitch where indicated in instructions.

SIMPLY THE BEST SEAM FINISHES FOR SHEER FABRICS

Seams can be finished with one of the three methods mentioned below, choose which one you would like to use.

OVERLOCK/SERGE - Overlock over raw edges of seam, using an overlock/serger machine.

OR

DOUBLE STITCHED SEAM- stitch seam again 1/8" (3mm) from first stitching. Trim close to stitching. Press seam to one side.

OR

FRENCH SEAM- To make French seam, stitch first seam on **OUTSIDE**, a scant 1/4" (6mm) from seam line; trim close to stitching. Stitch seam allowance, right sides together encasing first seam.

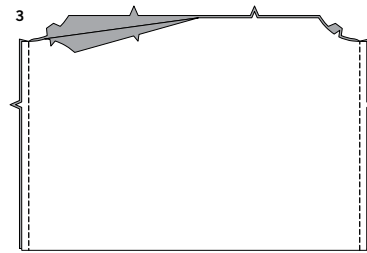
TOP A, B

NOTE: View A will be illustrated, unless otherwise indicated.

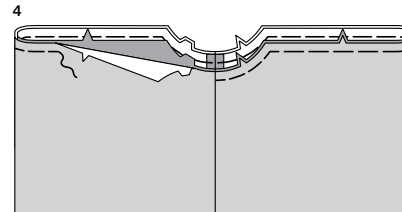
FRONT, BACK AND SLEEVE

1. Stitch front (4) to back (5) at sides.

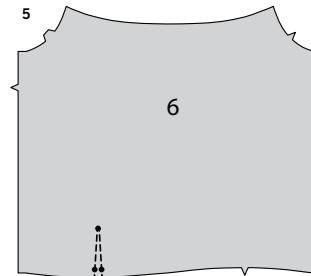
2. Trim 1" (2.5cm) from lower edge of front underlay and back underlay sections.



3. Stitch front underlay to back underlay at sides.

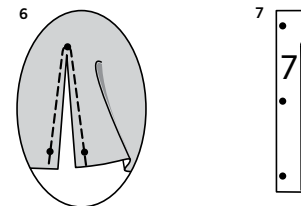


4. With **RIGHT** sides up, layer front and back over front and back underlay, matching centers, notches and seams. Baste upper edges.



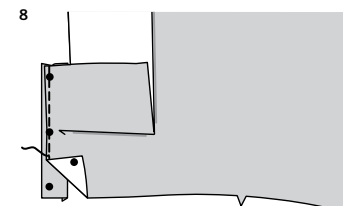
FOR VIEW A-

5. To make slash opening at lower edge of sleeve (6), stitch along stitching lines. Pivot and take one small stitch across the point.

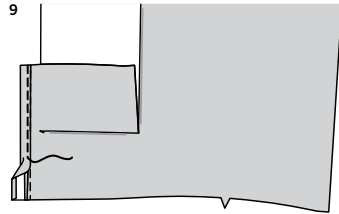


6. Slash between stitching, being careful not to slash through the stitch at the point.
TIP - To prevent fabric from fraying, treat the point with a liquid seam sealant, such as Fray Check™. TEST on a scrap of fabric first.

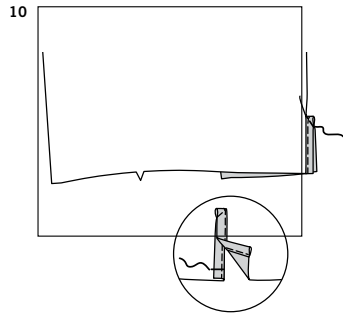
7. Press under 1/4" (6mm) on unmarked edge of continuous lap (7).



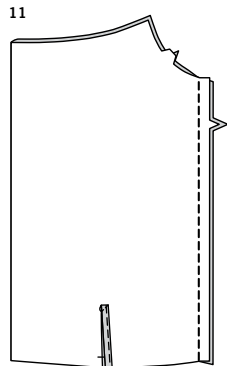
8. Spread slashed edges of sleeve apart so that they form a straight line. Pin **RIGHT** side of continuous lap to **WRONG** side of slashed edges, matching stitching lines and small dots. Sleeve seam allowance will be 1/4" (6mm) at the ends but taper close to nothing at the center dot. Stitch along stitching line, being careful not to pucker sleeve at center dot. Press seam toward lap.



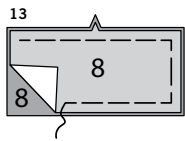
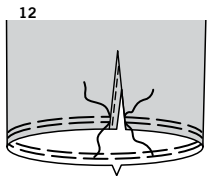
- 9.** Pin pressed edge of lap to **OUTSIDE** slightly over stitching. Stitch close to pressed edge.



- 10.** Turn front edge of lap to **INSIDE**; baste in place across lower edge. To keep lap in place, stitch diagonally across upper edge of lap, as shown.

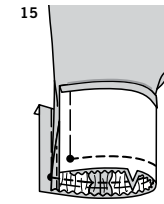
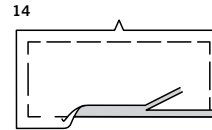


- 11.** Stitch sleeve seam.



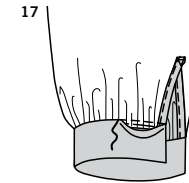
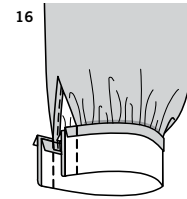
- 12.** **GATHER** lower edge of sleeve.

- 13.** With **RIGHT** sides up, pin cuff (8) over cuff underlay, matching small dots, having raw edges even. Baste.



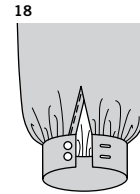
- 14.** Press under seam allowance on unnotched edge of cuff. Trim pressed edge to 3/8" (1cm).

- 15.** With **RIGHT** sides together, pin cuff to sleeve, placing small dots at sleeve opening edges. Pull up gathering stitches and adjust gathers evenly. Baste. Stitch. Trim seam. Press seam toward cuff.

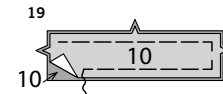


- 16.** With **RIGHT** sides together, fold cuff along foldline. Stitch ends. Trim.

- 17.** Turn cuff **RIGHT** side out. Press. **SLIPSTITCH** pressed edge over seam.

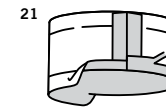
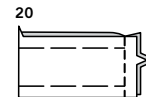


- 18.** Make buttonholes in cuff at markings. Sew buttons to cuff at small dots.



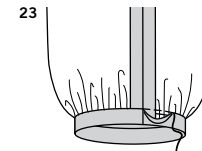
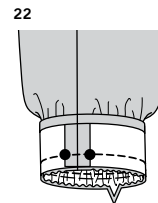
FOR VIEW B-

- 19.** With **RIGHT** sides up, pin sleeve band (10) over sleeve band underlay, matching large dots, having raw edges even. Baste.



- 20.** Stitch ends of sleeve band together, as shown.

- 21.** Press under seam allowance on unnotched edge of sleeve band. Trim pressed edge to 3/8" (1cm).



- 22.** With **RIGHT** sides together, pin sleeve band to sleeve, matching large dots and notches. Pull up gathering stitches and adjust gathers evenly. Baste. Stitch. Trim seam. Press seam toward sleeve band.

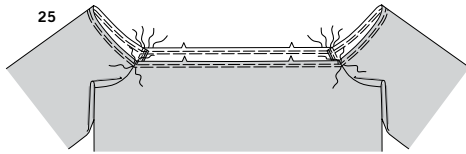
- 23.** Turn band to **INSIDE** along foldline. Press. **SLIPSTITCH** pressed edge over seam.

CONTINUE AS FOLLOWS FOR ALL VIEWS

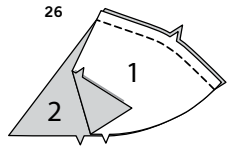


- 24.** With **RIGHT** sides together, pin sleeve to armhole edge, matching notches and seams. Stitch. Stitch again 1/4" (6mm) away in seam allowance. Trim close to stitching. Press seam allowances flat. Turn seam toward sleeve.

FINISHING



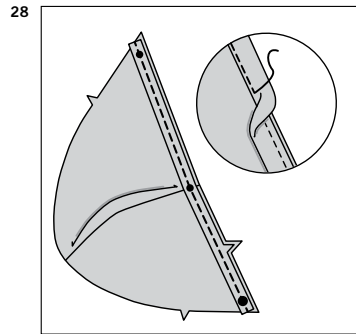
25. **GATHER** upper edge of front, back and sleeve between seams, as shown.



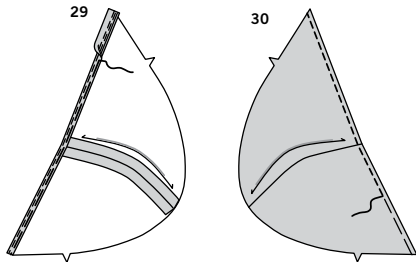
26. For each side, pin one yoke front (1) to one yoke back (2) at shoulder edge, matching notches. Stitch.



27. With **WRONG** sides together, fold neck facing (3) in half lengthwise, matching notches and dots. Press. Baste raw edges.

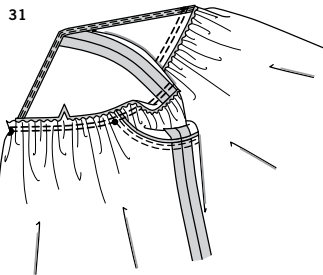


28. For each side, on **OUTSIDE**, pin one neck facing section to one yoke section, placing inner small dots at shoulder seams, matching remaining dots. Stitch in a 3/8" (1cm). Trim seam. **UNDERSTITCH** neck facing.

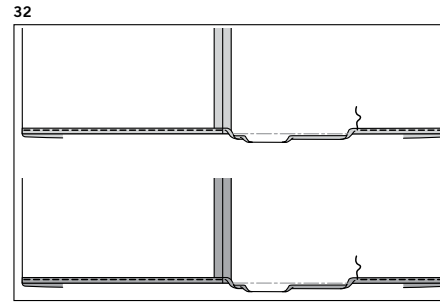


29. Turn facing to inside along seam. Press. Baste close to inner edge, as shown.

30. On **OUTSIDE**, **TOPSTITCH** as basted.

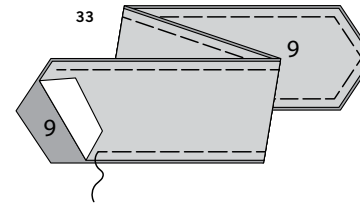


31. With **RIGHT** sides together, pin yokes to top, matching centers, placing yoke seams at small dots on sleeves and small dots on yokes at armhole seams, as shown. Pull up gathering stitches and adjust gathers evenly. Baste. Stitch. Trim seam. Press seam toward top.

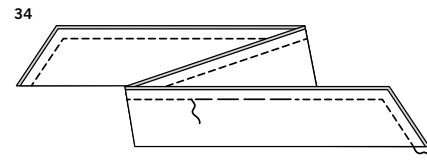


32. Make **NARROW HEM** at lower edge of top. Make **NARROW HEM** at lower edge of underlay.

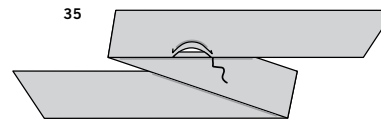
FOR VIEW A



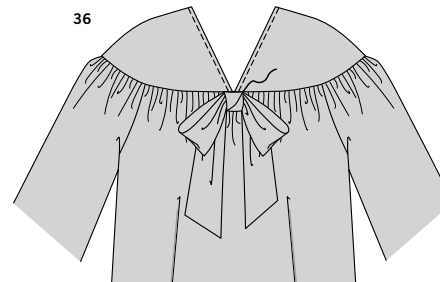
33. With **RIGHT** sides up, pin bow (9) over bow underlay, having raw edges even. Baste.



34. With **RIGHT** sides together, fold bow in half lengthwise. Stitch, leaving an opening for turning. Trim seam.



35. Turn **RIGHT** side out. Press. **SLIPSTITCH** opening.



36. Pin bow to center front, between yokes, as shown. Sew securely in place. Tie into a bow.



Congrats!

You've completed your sewing adventure

**SHARE
YOUR** LOOK



Post your pattern and tag us
@simplicity_creative_group and **#simplicitypatterns**
for a chance to be featured on our social media.

Look for more PDF patterns at [simplicity.com](https://www.simplicity.com)

Have a question or need help with your sewing project call us at
1-888-588-2700



Simplicity ©2024 a division of IG Design Group Americas Inc. • Atlanta, GA 30342 USA www.thedesigngroup.com • All Rights Reserved. www.simplicity.com • Made in the U.S.A. Fabriqué aux États-Unis.

To be used for individual private home use only and not for commercial or manufacturing purposes. • A usage privé seulement et non à des fins commerciales ou de production en série. • Para uso privado solamente, no se puede utilizar con propósitos de comercialización o de producción en serie.