

S9920

Simplicity®

easy-to-sew



A



B



C

Designed and printed in USA.



Easy

MISSES' DRESS WITH NECKLINE AND LENGTH VARIATIONS

Suggested Fabrics: Chambray, Cotton Blends, Cotton Lawn, Linen Blends, Poplin. **Lining:** Cotton Blends, Polyester Blends. **Interfacing:** Lightweight Fusible.

Notions: A,B,C: One 26" (66cm) invisible zipper.

Sizes	6	8	10	12	14	16	18	20	22	24
European	32	34	36	38	40	42	44	46	48	50

BODY MEASUREMENTS: Select pattern size based on body measurements

Bust	30½	31½	32½	34	36	38	40	42	44	46	Ins.
Waist	23	24	25	26½	28	30	32	34	37	39	"
Hip-9" below waist	32½	33½	34½	36	38	40	42	44	46	48	"
Back-neck to waist	15½	15¾	16	16¼	16½	16¾	17	17¼	17½	17¾	"

Lining A,B,C	45***	¾	¾	¾	¾	¾	¾	1	1	1	Yds.
Dress A	45**	2½	2¾	2¾	2¾	2¾	2¾	2¾	3	3	Yds.
	60**	2	2	2	2	2	2½	2½	2½	2½	"

Interfacing A,B	20" - 1½ yds.										
Dress B	45**	4¼	4¼	4¼	4¼	4¼	4½	4½	4½	4½	Yds.
	60**	3	3	3	3	3	3½	3½	3½	3½	"

Dress C	45**	3¾	3¾	3¾	3¾	4	4½	4½	4½	4½	Yds.
	60**	3	3	3	3¾	3¾	3¾	3¾	3¾	3¾	"

Interfacing 20" - 2½ yds.

FINISHED GARMENT MEASUREMENTS (Includes Design and Wearing Ease)

A,B,C Bust	34	35	36	37½	39½	41½	43½	45½	47½	49½	Ins.
A,B,C Waist	26	27	28	29½	31½	33½	35½	37½	39½	41½	"
A,B,C Hip	40½	41½	42½	44	46	48	50	52	54	56	"
Width, lower edge											
Dress A	74	75	76	77½	79½	81½	83½	85½	87½	89½	Ins.
Finished back length from base of neck											
Dress A	38½	38¾	39	39¼	39½	39¾	40	40¼	40½	40¾	Ins.
Dress B,C	51½	51¾	52	52¼	52½	52¾	53	53¼	53½	53¾	"

*with nap **without nap

Facile

ROBE AVEC VARIATIONS D'ENCOLURE ET DE LONGUEURS POUR JEUNES FEMMES

Tissus Conseillés: Chambray, Cotonnades, Linon de coton, Toile de lin mélangés, Popeline. **Doublure:** Cotonnades, Mélanges de polyester. **Entoilage:** Thermocollant léger.

Merцерie: A,B,C: 1 fermeture à glissière invisible de 66cm.

Tailles	6	8	10	12	14	16	18	20	22	24
Françaises	34	36	38	40	42	44	46	48	50	52
Européen	32	34	36	38	40	42	44	46	48	50

MESURES DU CORPS: Choisissez la taille du patron basée sur les mesures du corps

Poitrine	78	80	83	87	92	97	102	107	112	117	cm
Taille	58	61	64	67	71	76	81	87	94	99	"
Hanches (23cm au-dessous de la taille)											

	83	85	88	92	97	102	107	112	117	122	cm
Dos du cou à la taille	39.5	40	40.5	41.5	42	42.5	43	44	44	44.5	"

Doublure A,B,C	115cm**	0.6	0.7	0.7	0.8	0.8	0.8	0.8	0.9	0.9	m
Robe A	115cm*	2.3	2.3	2.4	2.4	2.5	2.6	2.6	2.6	2.7	m
	150cm*	1.8	1.8	1.8	1.8	1.8	1.8	1.9	2.1	2.1	"

Entoilage A,B	51cm - 1.7m										
Robe B	115cm*	3.8	3.9	3.9	3.9	3.9	4.0	4.1	4.3	4.3	m
	150cm*	2.7	2.7	2.7	2.7	2.7	2.7	2.9	3.1	3.1	"

Robe C	115cm*	3.4	3.5	3.5	3.5	3.7	3.8	4.2	4.2	4.3	m
	150cm*	2.7	2.7	2.7	2.9	2.9	2.9	2.9	3.1	3.1	"

Entoilage 51cm - 2.2m

MESURES DES VÊTEMENTS FINI (Motif et aisance de port compris)

A,B,C Poitrine	86	89	91	95	100	105	110	116	121	126	cm
A,B,C Taille	66	69	71	75	80	85	90	95	100	105	"
A,B,C Hanches	103	105	108	112	117	122	127	132	137	142	"
Largeur à l'ourlet											
Robe A	188	191	193	197	202	207	212	217	222	227	cm
Longueur finie – dos, votre nuque à l'ourlet											
Robe A	98	98	99	100	100	101	102	102	103	104	cm
Robe B,C	131	131	132	133	133	134	135	135	136	137	"

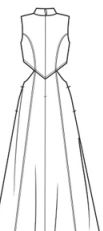
*avec sens **sans sens



A



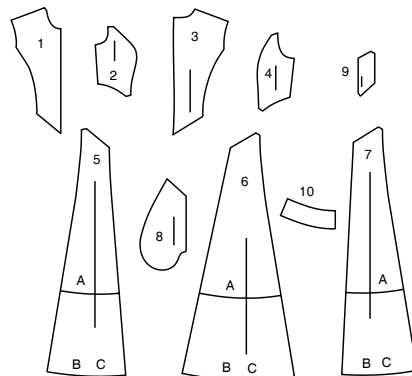
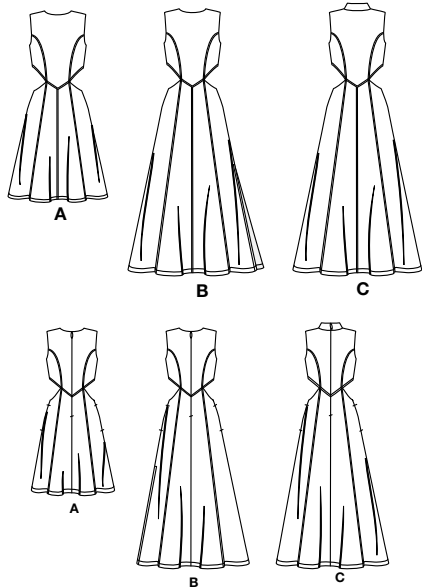
B



C

Simplicity®

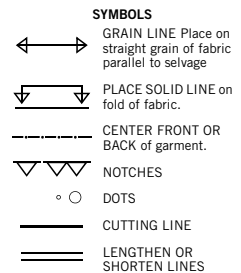
Thank you for purchasing this Simplicity pattern.
We made every effort to provide you with a high quality product.



- 1 BODICE FRONT - A,B,C
2 BODICE SIDE FRONT - A,B,C
3 BODICE BACK - A,B,C
4 BODICE SIDE BACK - A,B,C
5 SKIRT FRONT - A,B,C
6 SKIRT SIDE FRONT AND BACK - A,B,C
7 SKIRT BACK - A,B,C
8 POCKET - A,B,C
9 SKIRT FACING - A,B,C
10 COLLAR - C

General Directions

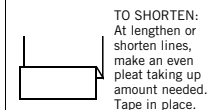
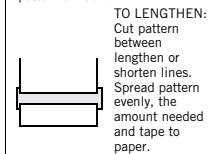
The Pattern



SEAM ALLOWANCE: 5/8" (1.5cm) unless otherwise stated is included but not printed on MULTI-SIZE PATTERNS. Mark your size with colored felt tip pen. See chart on tissue for how to use MULTI-SIZE PATTERNS.

ADJUST IF NEEDED

Make adjustments before placing pattern on fabric.



When lengthen or shorten lines are not given, make adjustments at lower edge of pattern.

Cutting/Marking

BEFORE CUTTING:

PRESS pattern pieces with a warm dry iron. PRE-SHRINK fabric by pre-washing washables or steam-pressing non-washables.

CIRCLE your cutting layout.

PIN pattern to fabric as shown in Cutting Layouts.

• FOR DOUBLE THICKNESS: Fold fabric with RIGHT sides together.

• FOR SINGLE THICKNESS: Place fabric RIGHT side up.

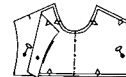
• FOR PILE, SHADED OR ONE WAY DESIGN FABRICS: Use "with nap" layouts

AFTER CUTTING:

Transfer markings to WRONG side of fabric before removing pattern. Use pin and chalk method or dressmaker's tracing paper and wheel.

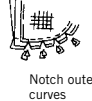
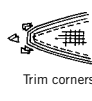
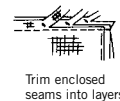
To Quick Mark:

- Snip edge of fabric to mark notches, ends of fold lines and center lines.
- Pin mark dots.



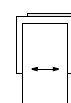
Sewing

- SEW garment following **Sewing Directions**.
- PIN or machine-baste seams matching notches.
- STITCH 5/8" (1.5 cm) seams unless otherwise stated.
- PRESS seams open unless otherwise indicated clipping when necessary so seams will lie flat.
- TRIM seams to reduce bulk, as shown below.

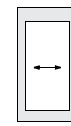


SPECIAL CUTTING NOTES

★ If layout shows a piece extending past fold, cut out all pieces except piece that extends.



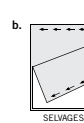
Open out fabric to single thickness. Cut extending piece on RIGHT side of fabric in position shown.



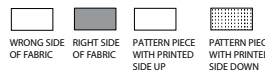
✱ Mark small arrows along both selvages indicating direction of nap or design. Fold fabric crosswise with RIGHT sides together, and cut along fold (a).



Turn one fabric layer around so arrows on both layers go in the same direction. Place RIGHT sides together (b).



Cutting Layouts

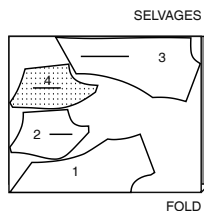


POSITION OF PATTERN PIECES MAY VARY SLIGHTLY ACCORDING TO YOUR PATTERN SIZE

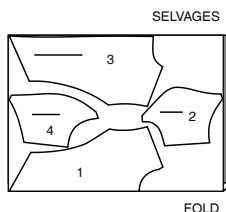
LINING A,B,C

USE PIECES 1 2 3 4

45" (115CM)
WITHOUT NAP
SIZES 6 8 10 12 14



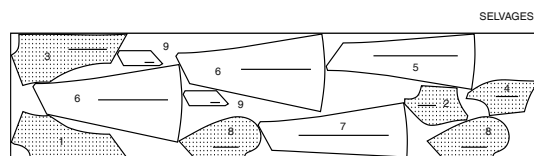
45" (115CM)
WITHOUT NAP
SIZES 16 18 20 22 24



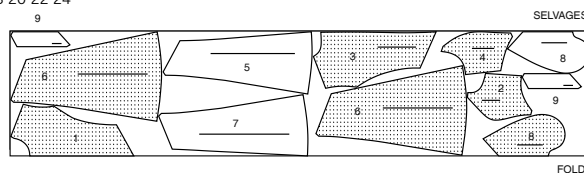
DRESS A

USE PIECES 1 2 3 4 5 6 7 8 9

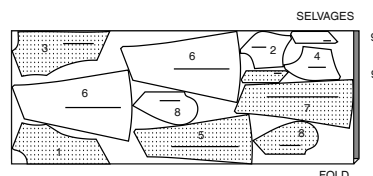
45" (115CM)
WITH NAP
SIZES 6 8 10
12 14



45" (115CM)
WITH NAP
SIZES 16 18 20 22 24



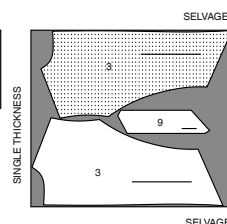
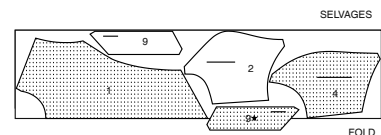
60" (150CM)
WITH NAP
ALL SIZES



INTERFACING A,B

USE PIECES 1 2 3 4 9

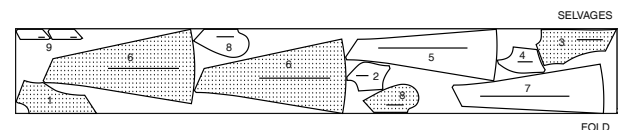
20" (51CM)
ALL SIZES



DRESS B

USE PIECES 1 2 3 4 5 6 7 8 9

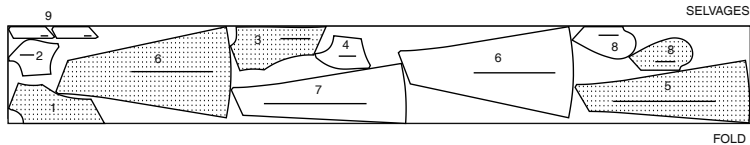
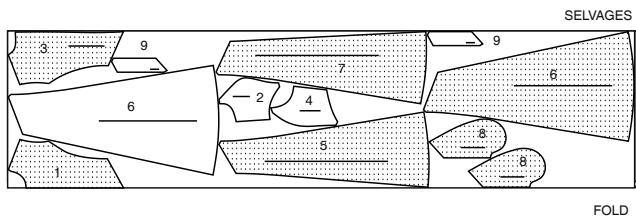
45" (115CM)
WITH NAP
SIZES 6 8 10 12 14 16 18



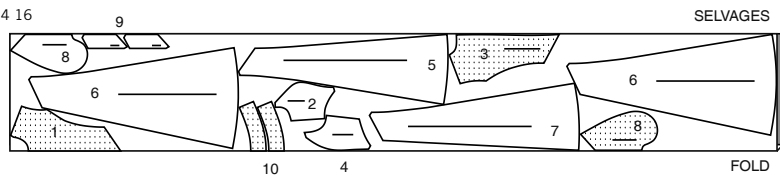
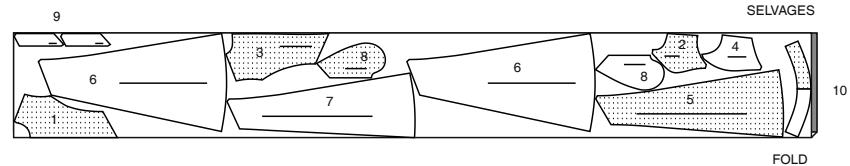
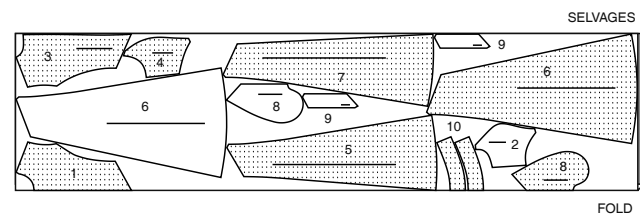
CUTTING LAYOUTS CONTINUED ON PAGE 2

S9920

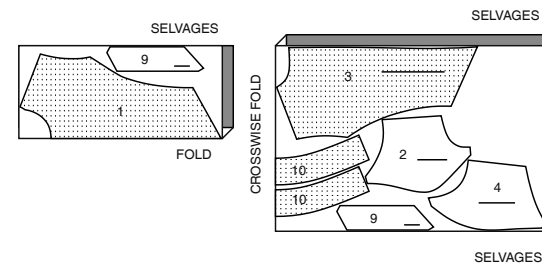
2 of 5

45" (115CM)
WITH NAP
SIZES 20 22 2460" (150CM)
WITH NAP
ALL SIZES**DRESS C**

USE PIECES 1 2 3 4 5 6 7 8 9 10

45" (115CM)
WITH NAP
SIZES 6 8 10 12 14 1645" (115CM)
WITH NAP
SIZES 18 20 22 2460" (150CM)
WITH NAP
ALL SIZES**INTERFACING C**

USE PIECES 1 2 3 4 9 10

20" (51CM)
ALL SIZES**Sewing Directions**

FABRIC KEY

RIGHT SIDE	WRONG SIDE	INTERFACING	LINING	LINING
------------	------------	-------------	--------	--------

Read **General Directions** on page 1 before you begin.Sewing methods in **BOLD TYPE** have Sewing Tutorial Video available. Scan QR CODE to watch videos:**REINFORCE** - see Machine Stitches: "how to reinforce" video.**STAYSTITCH** - see Machine Stitches: "how to do stay-stitching" video.**TOPSTITCH** - see Machine Stitches: "how to topstitch" video.**UNDERSTITCH** - see Machine Stitches: "how to understitch" video.**INVISIBLE ZIPPER** - see Zipper: "sewing an invisible zipper" video.**SLIPSTITCH** - Slide needle through a folded edge, then pick up a thread of underneath fabric.

PATTERN PIECES WILL BE IDENTIFIED BY NUMBERS THE FIRST TIME THEY ARE USED.
STITCH SEAMS WITH RIGHT SIDES TOGETHER UNLESS OTHERWISE STATED.

NOTE: Under each sub-heading, the first view will be illustrated, unless otherwise illustrated.

SEWING TUTORIALS



Build your skills viewing short, easy-to-follow videos at
[simplicity.com/sewingtutorials](https://www.simplicity.com/sewingtutorials)

DRESS A, B, C**NOTE:** Topstitching is optional.**INTERFACING**

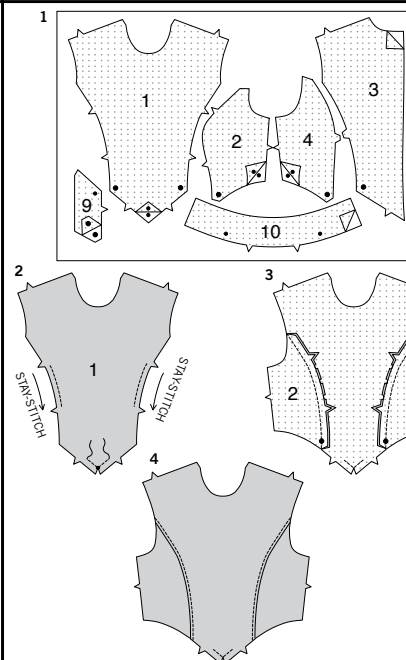
1. Fuse INTERFACING to wrong side of each matching FABRIC section, following manufacturer's instructions.

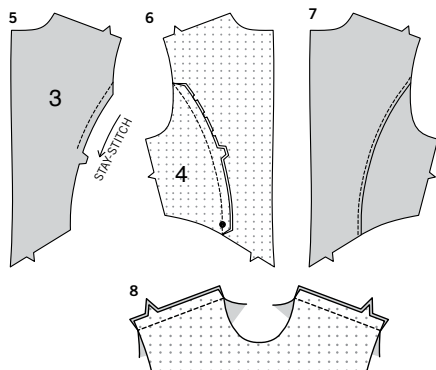
BODICE FRONT AND BACK

2. REINFORCE lower edge of Bodice front (1) through small dot. Clip to dot. **STAYSTITCH** side front edges of bodice front between notches in direction of arrows.

3. With right sides together, pin Bodice side front (2) to bodice front, matching notches and dots, clipping bodice front where necessary. Stitch. Press seams toward front.

4. OPTIONAL: TOPSTITCH bodice front.



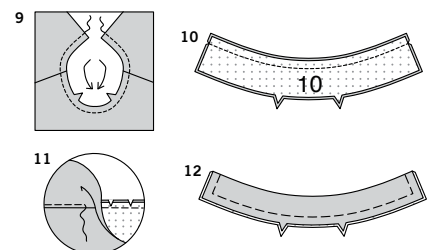


5. STAYSTITCH side back edge of Bodice back (3) above notches in direction of arrows.

6. With right sides together, pin Bodice side back (4) to bodice back, matching notches and dots, clipping bodice back where necessary. Stitch. Press seams toward back.

7. OPTIONAL: TOPSTITCH bodice back.

8. Stitch back to front at shoulders.



COLLAR C

9. STAYSTITCH neck edge of bodice in direction of arrows.

10. Pin Collar (10) sections, right sides together, matching raw edges and centers. Stitch long, unnotched edge; trim seam.

11. UNDERSTITCH one collar section. (This is wrong side of collar.)

12. Turn right side out; press. Baste raw edges together, matching notches.

13. On outside, pin right side of collar to neck edge, matching centers and dots to shoulder seams, clipping bodice neck edge where necessary. Baste.

BODICE LINING

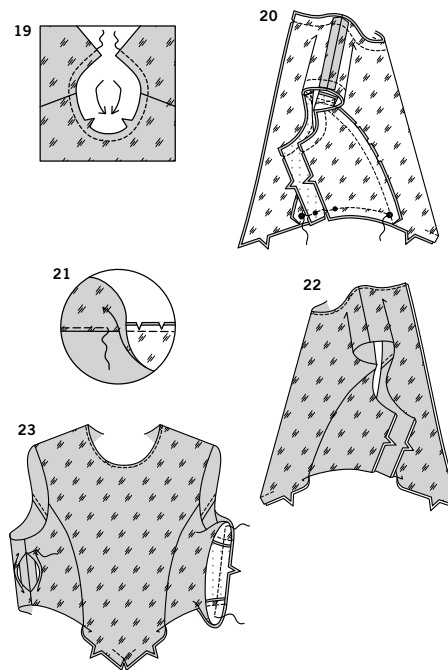
14. REINFORCE lower edge of bodice front Lining (1) through small dot. Clip to dot. **STAYSTITCH** side front edges of bodice front lining between notches.

15. With right sides together, pin bodice side front Lining (2) to bodice front lining, matching notches and dots, clipping bodice front lining where necessary. Stitch. Press seams toward front lining.

16. STAYSTITCH side back edge of bodice back Lining (3) above notches.

17. With right sides together, pin bodice side back Lining (4) to bodice back lining, matching notches and dots, clipping bodice back lining where necessary. Stitch. Press seams toward back lining.

18. Stitch back lining to front lining at shoulders.



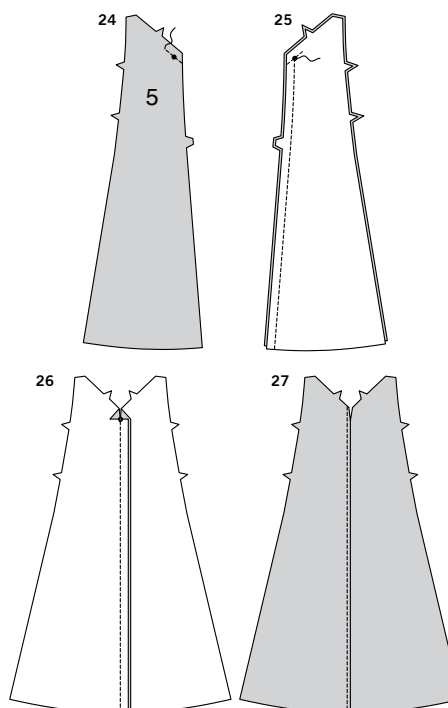
19. FOR VIEW C: STAYSTITCH neck edge of bodice lining.

20. Pin lining to bodice, right sides together, matching centers, seams and dots. Stitch neck and armhole edges. Stitch lower edges, from side seams to large dots. Trim seams.

21. UNDERSTITCH lining neck edge.

22. Turn right side out, bringing both backs through shoulders and out one side of front. Press, turning collar up for View C.

23. Starting 2" (5cm) above armhole seam and ending 2" (5cm) below seam at lower edge, stitch bodice back to bodice front at sides and lining edges together in one continuous seam. Finger-press seam allowances of bodice open. Slip seam allowances under lining. Turn under 5/8" (1.5cm) on lining opening edges and **SLIPSTITCH** together.



SKIRT

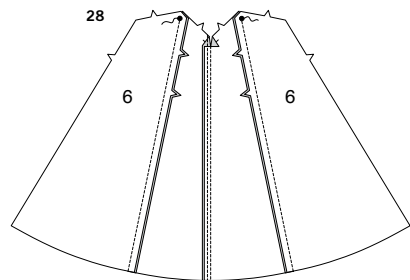
FRONT

24. REINFORCE Skirt front (5) through small dot.

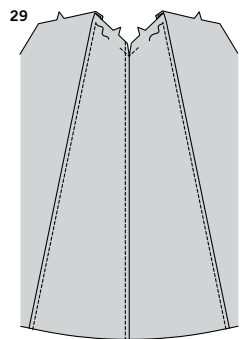
25. With right sides together, pin skirt front sections, matching small dots. Stitch center front seam from lower edge to small dot.

26. Clip left skirt front at small dot. Press seams toward right at center front, below clip.

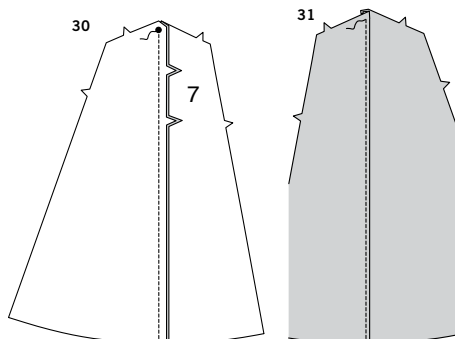
27. OPTIONAL: TOPSTITCH left skirt front.



28. With right sides together, pin one Skirt side front and side back (6) section to each side of skirt front, matching notches and large dots. Stitch side front seam, from lower edge to large dots. Press seams toward center front. (Save remaining skirt side front and side back sections for back.)



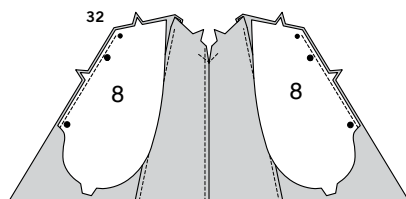
29. OPTIONAL: TOPSTITCH skirt front.



BACK

30. With right sides together, a skirt side front and side back (6) section to side back edge of each Skirt back (7) section, matching notches and large dots. Stitch from lower edge to large dots. Press seams toward center back.

31. OPTIONAL: TOPSTITCH skirt back.



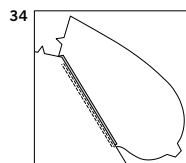
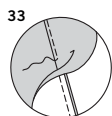
POCKETS AND SIDE SEAMS

NOTE: Apply pockets to side edges of skirt front and back as follows:

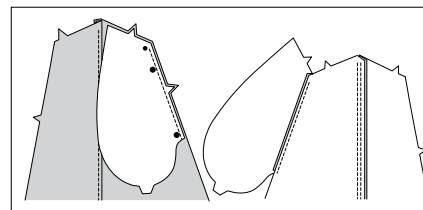
32. With RIGHT sides together, pin one Pocket (8) section to each side of skirt front, matching dots, having raw edges even. Stitch in 3/8" (1cm) seam, ending at small dots.

33. UNDERSTITCH pocket.

34. Press seams toward pocket, pressing pocket out.

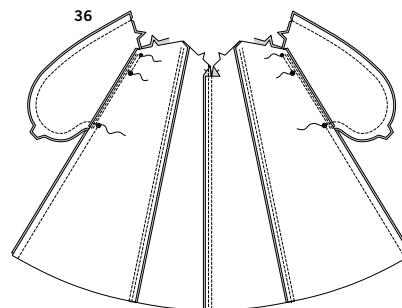


35



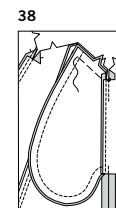
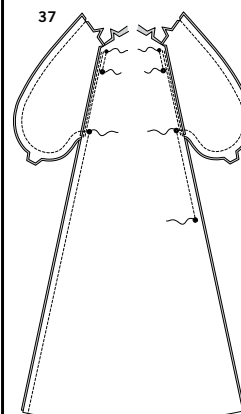
35. Stitch one remaining pocket section to each skirt back, matching notches and dots, having raw edges even. Stitch in 3/8" (1cm) seam, ending at small dot. Press seams toward pocket, pressing pocket out.

VIEWS A, C



36. Pin front to back at side seams, matching small and large dots. Stitch side seams from lower edge to small dot, leaving an opening between large dots. Stitch pocket edges together from side seam to upper edge.

VIEW B



37. Pin front to back at side seams, matching small and large dots. Stitch right side seam from lower edge to small dot, leaving an opening between large dots. Stitch pocket edges together from side seam to upper edge. Stitch left side seam from lower large dot to small dot, leaving an opening between center large dots. Stitch pocket edges together from side seam to upper edge.

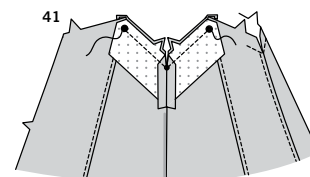
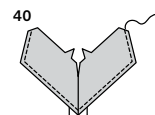
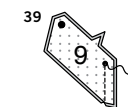
VIEWS A, B C

38. Clip back seam allowances above and below pockets. Turn pockets toward front along seam lines; press. Baste upper edges together.

SKIRT FACING

39. For each facing, pin two Skirt facing (9) sections, right sides together, matching dots. Stitch from lower edge to small dot.

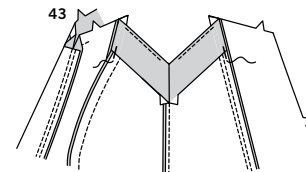
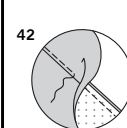
40. FINISH sides and lower edges.



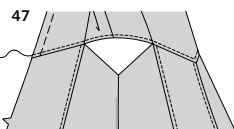
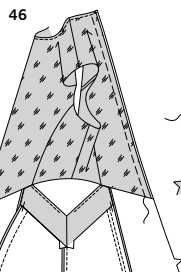
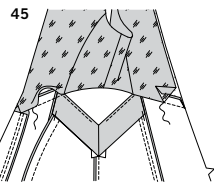
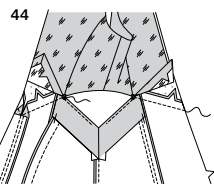
41. With right sides together, pin one facing section to skirt at each side seam, matching notches and dots. Stitch notched edge between large dots, pivoting at small dot. Trim seam.

42. UNDERSTITCH facing as far as possible.

43. Turn facing to inside; press. Tack facing to seams.



ATTACHING BODICE TO SKIRT



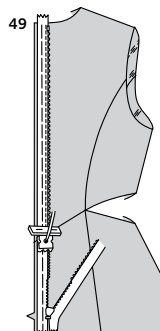
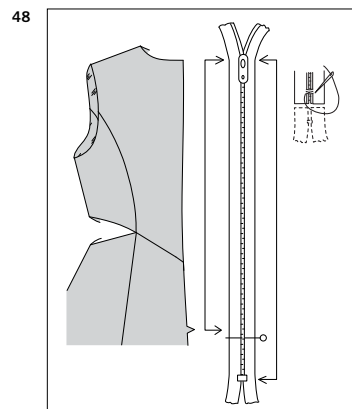
44. Keeping bodice lining free, pin upper edge of skirt to lower edge of bodice, right sides together, matching notches, centers, dots and seams. Baste. Stitch; trim seam. Press seam allowances toward bodice.

45. Press under 5/8" (1.5cm) on lower edge of bodice lining. Pin lining to upper edge of skirt. **SLIPSTITCH** pressed edge of lining over seam.

46. Baste lining to bodice at center back.

47. OPTIONAL: TOPSTITCH lower edge of bodice.

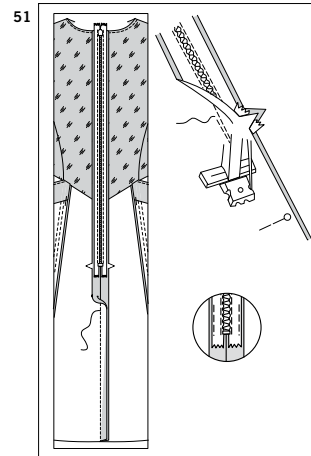
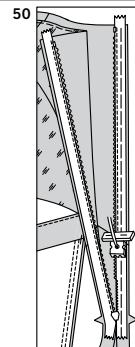
ZIPPER



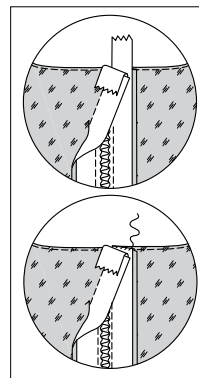
48. NOTE: It may be necessary to shorten zipper. To make new zipper stop, place zipper along opening edge (with pull tab 1/8" (3mm) below seam line). Mark placement of new zipper stop. Whipstitch across teeth at marking. Cut zipper 3/4" (2cm) below the new stop.

NOTE: Use special invisible zipper foot when stitching invisible zipper.

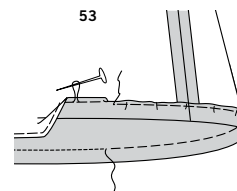
49. Open the zipper and press the tape using a cool iron. On **OUTSIDE**, pin **RIGHT** side of the zipper face down on the **RIGHT** side of the zipper opening. Have the coil along the seam line, the tape within the seam allowance and the top stop 1/8" (3mm) below upper edge, as shown. Hand-baste along center of the tape. Position zipper foot at the top of the zipper with **RIGHT** groove of the foot over coil. Stitch along tape to the notch. Back-stitch to reinforce.



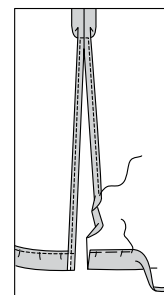
52.



53.



54.



50. Pin the remaining half of the zipper to the **LEFT** side of the zipper opening in same manner. Make sure the upper and lower edges of the dress are even. Hand-baste along the center of the tape. Position zipper foot at the top of the zipper with **LEFT** groove over the coil. Stitch along tape to the notch. Back-stitch to reinforce.

51. Close zipper and check that it is invisible from the **OUTSIDE**. Pull the free ends of the zipper tape away from the seam allowance. Pin remaining center back seam together below zipper. Position zipper foot all the way to the **LEFT** so the needle goes down through the outer notch of the foot. Start stitching seam 1/4" (6mm) above lowest stitch and slightly to the **LEFT**. Stitch seam for about 3" (7.5cm). Stitch remainder of seam using your regular presser foot. If you prefer, open out each seam allowance at end of zipper and stitch tape to seam allowance.

52. Turn under upper edge of zipper tapes and **SLIPSTITCH** in place, as shown.

HEM

53. Stitch 1/4" (6mm) from lower edge of dress using long machine stitches, as shown. Turn up 1-1/4" (3.2cm) hem on lower edge of dress, turning in 1/4" (6mm) on raw edge. Pull thread to ease in fullness. Baste hem in place close to upper edge; press. **TOPSTITCH** hem along basting.

VIEW B

54. Press under 5/8" (1.5cm) on left side slit opening edges. Press under 1/4" (6mm) on raw edge; stitch, squaring stitching above opening.



Congrats!

You've completed your sewing adventure

SHARE YOUR LOOK



Post your pattern and tag us
@simplicity_creative_group and **#simplicitypatterns**
for a chance to be featured on our social media.

Look for more PDF patterns at [simplicity.com](https://www.simplicity.com)

Have a question or need help with your sewing project call us at
1-888-588-2700



Simplicity ©2024 a division of IG Design Group Americas Inc. • Atlanta, GA 30342 USA www.thedesigngroup.com • All Rights Reserved. www.simplicity.com • Made in the U.S.A. Fabriqué aux États-Unis.

To be used for individual private home use only and not for commercial or manufacturing purposes. • A usage privé seulement et non à des fins commerciales ou de production en série. • Para uso privado solamente, no se puede utilizar con propósitos de comercialización o de producción en serie.