

S9919

Simplicity®



Designed and printed in USA.

Average
WOMEN'S DRESS (WITH C,D,DD CUP SIZES) WITH SLEEVE AND LENGTH VARIATIONS

Suggested Fabrics: Challis, Crepe, Lightweight Poplin, Linen Types, Sateen, Silky Types, Soft Cotton Types. **Lining:** Polyester, Rayons. **Interfacing:** Lightweight Fusible.

Notions: A,B: One 14" (36cm) invisible zipper, 1 yd. (1.0m) of 1¼" (3cm), 2¼yds. (2.7m) of ¾" (1cm) elastic, ¼ yd. (0.8m) of ½" (1.3cm) elastic.

Sizes	20W	22W	24W	26W	28W	30W	32W	34W	36W	38W
European	46	48	50	52	54	56	58	60	62	64

BODY MEASUREMENTS: Select pattern size based on body measurements

Bust	42	44	46	48	50	52	54	56	58	60	Ins.
Waist	35	37	39	41½	44	46½	49	51½	53	54½	"
Hip-9" below waist	44	46	48	50	52	54	56	58	60	62	"
Back-neck to waist	17½	17¾	17¾	17¾	17¾	17¾	18	18½	18½	18½	"

Lining A,B	45***	%	%	%	%	%	%	%	%	%	Yd.
Interfacing	20" - 1¼ yds.										

Dress A	45**	3%	3¼	4	4½	4½	4½	4½	4½	4½	Yds.
	60**	3%	3¼	3¼	3¼	3¼	3½	3½	3½	3½	"

Dress B	45**	4½	4½	4½	5½	5½	5½	5½	6	6½	Yds.
	60**	3½	3½	3½	3½	3½	4	4½	4½	4½	"

FINISHED GARMENT MEASUREMENTS (Includes Design and Wearing Ease)

C Bust Cup	44½	46½	48½	50½	52½	54½	56½	58½	60½	62½	Ins.
D Bust Cup	45½	47½	49½	51½	53½	55½	57½	59½	61½	63½	"
DD Bust Cup	46½	48½	50½	52½	54½	56½	58½	60½	62½	64½	"
A,B Waist	35	37	39	41	43	45	47	49	51	53	"
A,B Hip	60½	62½	64½	66½	68½	70½	72½	74½	76½	78½	"

Width, lower edge											
Dress A	80½	82½	84½	86½	88½	90½	92½	94½	96½	98½	Ins.
Dress B	89½	91½	93½	95½	97½	99½	101½	103½	105½	107½	"

Finished back length from base of neck

Dress A	44½	44½	44½	45	45½	45½	45½	46	46½	46½	Ins.
Dress B	52½	52½	5¼	53	53½	53½	53½	54	54½	54½	"

*with nap **without nap

Moins Facile
ROBE (AVEC TAILLES DE BONNET C,D,DD) AVEC VARIATIONS DE MANCHES ET DE LONGUEURS POUR FEMMES

Tissus Conseillés: Challis, Crêpe, Popeline léger, Sortes de toile de lin, Satin de coton, Tissus soyeux, Sortes de coton souples. **Doublure:** Polyester, Rayonnes. **Entoilage:** Thermocollant léger.

Mercerie: A,B: 1 fermeture à glissière invisible de 36cm, 1.0m d'élastique de 3cm, 2.7m d'élastique de 1cm, 0.8m d'élastique de 1.3cm

Tailles	20W	22W	24W	26W	28W	30W	32W	34W	36W	38W
Françaises	48	50	52	54	56	58	60	62	64	66
Européen	46	48	50	52	54	56	58	60	62	64

MESURES DU CORPS: Choisissez la taille du patron basée sur les mesures du corps

Poitrine	107	112	117	122	127	132	137	142	147	152	cm
Taille	89	94	99	105	112	118	124	130	134	138	"

Hanches (23cm au-dessous de la taille)

	112	117	122	127	132	137	142	147	152	157	cm
Dos du cou à la taille	44	44	44.5	45	45	45.5	46	46	46.5	47	"

Doublure A,B	115cm**	0.6	0.6	0.7	0.7	0.7	0.7	0.7	0.7	0.7	m
Entoilage	51cm - 1.0m										

Robe A	115cm*	3.3	3.4	3.5	3.8	3.8	3.8	3.9	3.9	4.0	4.2	m
	150cm*	2.9	2.9	3.0	3.0	3.0	3.1	3.1	3.2	3.2	3.2	"

Robe B	115cm*	4.1	4.2	4.5	4.7	4.8	5.0	5.1	5.3	5.5	5.6	m
	150cm*	3.4	3.4	3.4	3.5	3.5	3.5	3.7	3.7	3.8	3.8	"

MESURES DES VÊTEMENTS FINI (Motif et aisance de port compris)

C Poitrine-Bonnet	113	118	123	128	133	138	144	149	154	159	cm
D Poitrine-Bonnet	116	121	126	131	136	141	146	151	156	161	"
DD Poitrine-Bonnet	118	123	128	133	138	144	149	154	159	164	"
A,B Taille	89	94	99	104	109	114	119	124	130	135	"
A,B Hanches	154	159	164	169	174	179	184	189	194	199	"

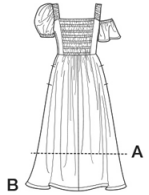
Largeur à l'ourlet

Dress A	204	210	215	220	225	230	235	240	245	250	cm
Dress B	227	232	237	243	248	253	258	263	268	273	"

Longueur finie - dos, votre nuque à l'ourlet

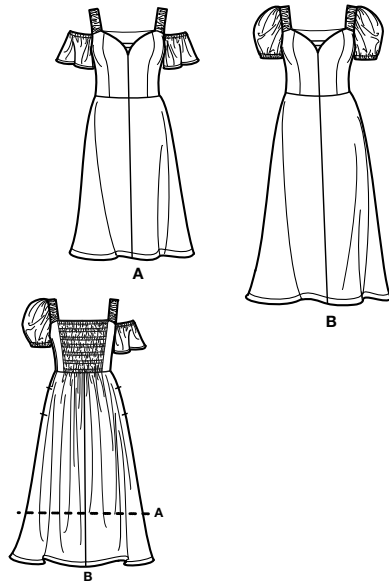
Dress A	112	113	114	114	115	116	116	117	117	118	cm
Dress B	133	133	134	135	135	136	137	137	138	138	"

*avec sens **sans sens

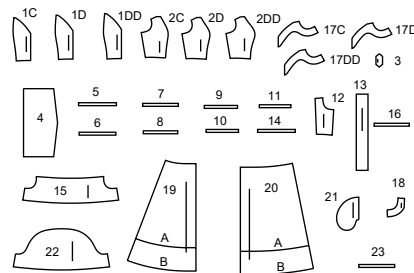


Simplicity®

Thank you for purchasing this Simplicity pattern.
We made every effort to provide you with a high quality product.



23 PIECES



- 1C BODICE FRONT - A,B (C CUP)
1D BODICE FRONT - A,B (D CUP)
1DD BODICE FRONT - A,B (DD CUP)
2C BODICE SIDE FRONT - A,B (C CUP)
2D BODICE SIDE FRONT - A,B (D CUP)
2DD BODICE SIDE FRONT - A,B (DD CUP)
3 STRAP - A,B
4 BODICE BACK - A,B
5 ELASTIC GUIDE FOR BACK 1 - A,B
6 ELASTIC GUIDE FOR BACK 2 - A,B
7 ELASTIC GUIDE FOR BACK 3 - A,B
8 ELASTIC GUIDE FOR BACK 4 - A,B
9 ELASTIC GUIDE FOR BACK 5 - A,B
10 ELASTIC GUIDE FOR BACK 6 - A,B
11 ELASTIC GUIDE FOR BACK 7 - A,B
12 BODICE SIDE BACK - A,B
13 SHOULDER STRAP - A,B
14 ELASTIC GUIDE FOR SHOULDER STRAP - A,B
15 SLEEVE - A
16 ELASTIC GUIDE FOR SLEEVE - A
17C FRONT FACING - A,B (C CUP)
17D FRONT FACING - A,B (D CUP)
17DD FRONT FACING - A,B (DD CUP)
18 BACK ARMHOLE FACING - A,B
19 SKIRT FRONT - A,B
20 SKIRT BACK - A,B
21 POCKET - A,B
22 SLEEVE - B
23 ELASTIC GUIDE FOR SLEEVE - B



www.simplicity.com



info@simplicity.com



1-888-588-2700

General Directions

The Pattern

- SYMBOLS**
- GRAIN LINE Place on straight grain of fabric parallel to selvage
 - PLACE SOLID LINE on fold of fabric.
 - CENTER FRONT OR BACK OF GARMENT.
 - NOTCHES
 - DOTS
 - CUTTING LINE
 - LENGTHEN OR SHORTEN LINES

SEAM ALLOWANCE: 5/8" (1.5cm) unless otherwise stated is included but not printed on MULTI-SIZE PATTERNS. Mark your size with colored felt tip pen. See chart on tissue for how to use MULTI-SIZE PATTERNS.

ADJUST IF NEEDED

Make adjustments before placing pattern on fabric.

TO LENGTHEN:
Cut pattern between lengthen or shorten lines. Spread pattern evenly, the amount needed and tape to paper.

TO SHORTEN:
At lengthen or shorten lines, make an even pleat taking up amount needed. Tape in place.

When lengthen or shorten lines are not given, make adjustments at lower edge of pattern.

Cutting/Marking

BEFORE CUTTING:

PRESS pattern pieces with a warm dry iron. PRE-SHRINK fabric by pre-washing washables or steam-pressing non-washables.

CIRCLE your cutting layout.

PIN pattern to fabric as shown in Cutting Layouts.

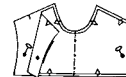
- FOR DOUBLE THICKNESS: Fold fabric with RIGHT sides together.
- FOR SINGLE THICKNESS: Place fabric RIGHT side up.
- FOR PILE, SHADED OR ONE WAY DESIGN FABRICS: Use "with nap" layouts

AFTER CUTTING:

Transfer markings to WRONG side of fabric before removing pattern. Use pin and chalk method or dressmaker's tracing paper and wheel.

To Quick Mark:

- Snip edge of fabric to mark notches, ends of fold lines and center lines.
- Pin mark dots.

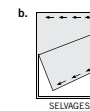


SPECIAL CUTTING NOTES

★ If layout shows a piece extending past fold, cut out all pieces except piece that extends.

Open out fabric to single thickness. Cut extending piece on RIGHT side of fabric in position shown.

✱ Mark small arrows along both selvages indicating direction of nap or design. Fold fabric crosswise with RIGHT sides together, and cut along fold (a).



Cutting Layouts

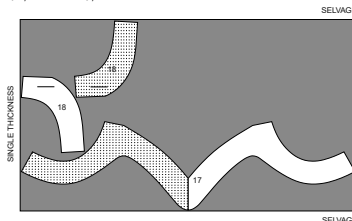
- WRONG SIDE OF FABRIC
- RIGHT SIDE OF FABRIC
- PATTERN PIECE WITH PRINTED SIDE UP
- PATTERN PIECE WITH PRINTED SIDE DOWN
- ★ SEE SPECIAL CUTTING NOTES

POSITION OF PATTERN PIECES MAY VARY SLIGHTLY ACCORDING TO YOUR PATTERN SIZE

INTERFACING A,B

USE PIECES 17 (C,D OR DD), 18

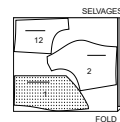
20" (51CM)
ALL SIZES



LINING A,B

USE PIECES 1 (C,D OR DD), 2 (C,D OR DD), 12

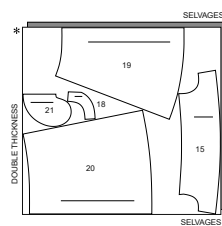
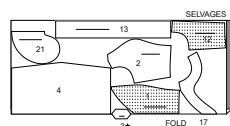
45" (115CM)
WITHOUT NAP
ALL SIZES



DRESS A

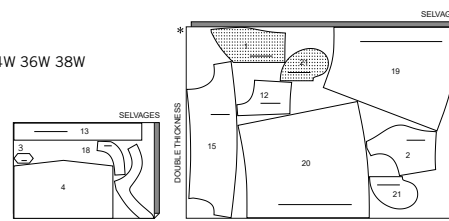
USE PIECES 1 (C,D OR DD), 2 (C,D OR DD), 3, 4, 12, 13, 15, 17 (C,D OR DD), 18, 19, 20, 21

45" (115CM)
WITH NAP
SIZES 20W 22W 24W 26W

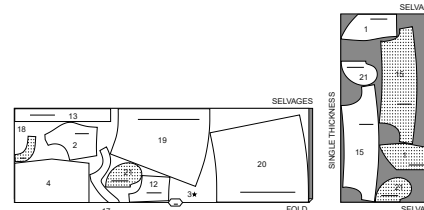


45" (115CM)
WITH NAP
SIZES 28W 30W 32W 34W 36W 38W

CUT ONE OF PIECE 3



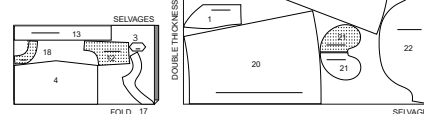
60" (150CM)
WITH NAP
ALL SIZES



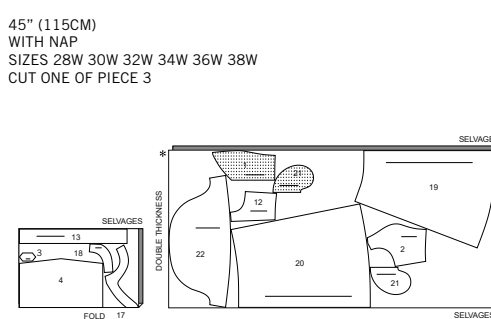
DRESS B

USE PIECES 1 (C,D OR DD), 2 (C,D OR DD), 3, 4, 12, 13, 17 (C,D OR DD), 18, 19, 20, 21, 22

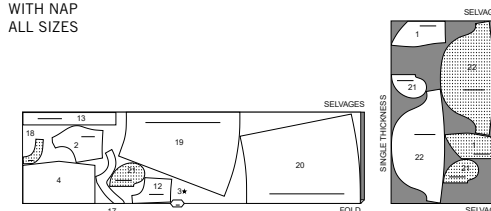
45" (115CM)
WITH NAP
SIZES 20W 22W
24W 26W
CUT ONE OF PIECE 3



45" (115CM)
WITH NAP
SIZES 28W 30W 32W 34W 36W 38W
CUT ONE OF PIECE 3



60" (150CM)
WITH NAP
ALL SIZES



SEWING TUTORIALS



Build your skills viewing short, easy-to-follow videos at simplicity.com/sewingtutorials

Sewing Directions

FABRIC KEY

RIGHT SIDE	WRONG SIDE	INTERFACING	LINING	LINING
------------	------------	-------------	--------	--------

Read **General Directions** on page 1 before you begin.

Sewing methods in **BOLD TYPE** have Sewing Tutorial Video available. Scan QR CODE to watch videos:

EASE/GATHER - See **sewing two row gathers** video.

FINISH - See **how to finish seam allowances** video.

NARROW HEM - See **sewing narrow hems** video.

REINFORCE - See **how to reinforce** video.

SLIPSTITCH - See **how to slipstitch** video.

STAYSTITCH - See **how to do stay-stitching** video.

UNDERSTITCH - See **how to understitch** video.

PATTERN PIECES WILL BE IDENTIFIED BY NUMBERS THE FIRST TIME THEY ARE USED.

STITCH 5/8" (1.5CM) SEAMS WITH RIGHT SIDES TOGETHER UNLESS OTHERWISE STATED.

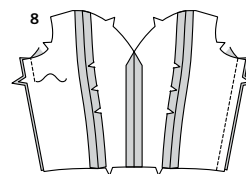
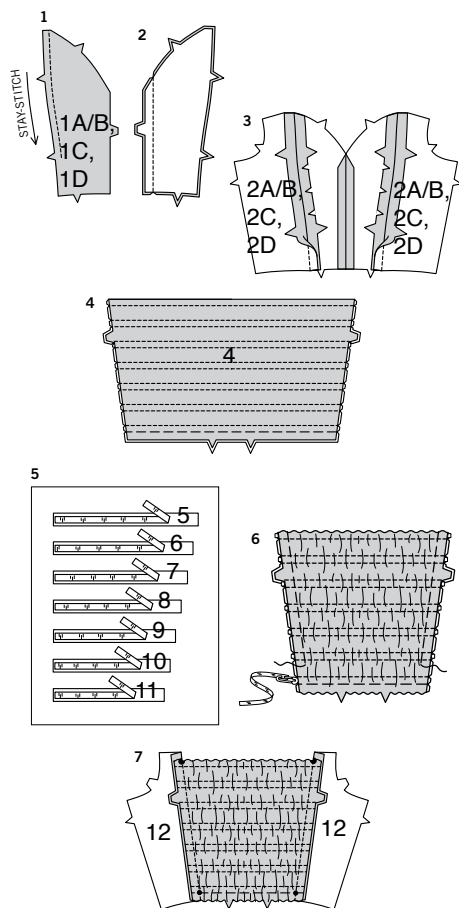
DRESS A, B

NOTE: View A will be illustrated, unless otherwise indicated.

INTERFACING - Pin interfacing to **WRONG** side of fabric. Fuse interfacing in place following manufacturer's directions.

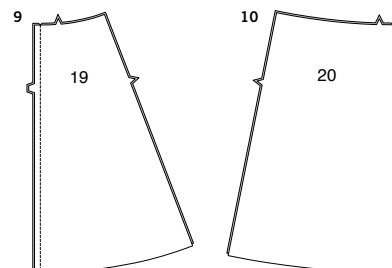
BODICE

- 1. STAYSTITCH** side edge of bodice front (1A/B, 1C or 1D) above lower notch, as shown.
- Stitch bodice front sections together at center front seam.
- With **RIGHT** sides together, pin bodice side front (2A/B, 2C or 2D) to side edges of bodice front, clipping bodice front where necessary. Baste. Stitch.
- With **WRONG** sides together, fold bodice back (4) along foldline. Baste lower edges and along stitching lines. Stitch along stitching lines.
- Cut seven pieces of 3/8" (1cm) wide elastic the length of each elastic guide for back (5, 6, 7, 8, 9, 10 and 11).
- Insert elastic through casings, having raw edges even, beginning with upper casing, inserting elastic in order. Stitch ends of casings, catching elastic in stitching. Baste side edges.
- Pin bodice side back (12) to back, matching notches. Stitch. Press seams toward bodice side back.

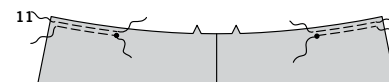


- Stitch bodice front to bodice back at right side. Stitch bodice front to bodice back at left side, leaving open below notch.

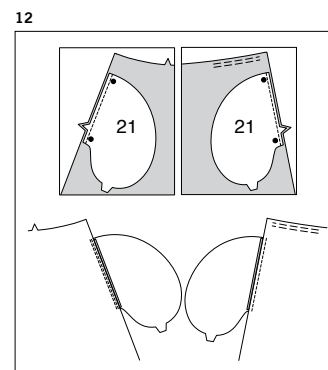
SKIRT



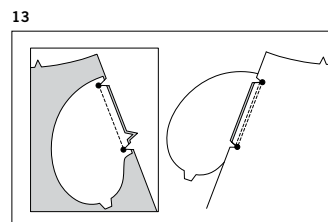
- Stitch skirt front (19) sections together at center front seam.
- Stitch skirt back (20) sections together at center back seam.



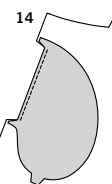
- GATHER** upper edge of skirt back between small dots and side seamlines, as shown.



- With **RIGHT** sides together, pin one **POCKET** (21) section to right side edge of skirt front and skirt back, matching notches and large dots. Stitch in 3/8" (1cm) seams. Press seams toward pockets. **UNDERSTITCH** front pocket.

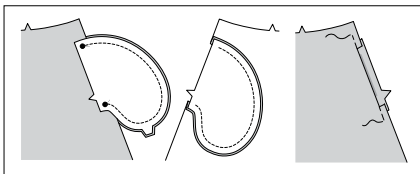


- With **RIGHT** sides together, pin one remaining pocket section to left side edge of skirt front. Stitch pocket along seamline between large dots. Clip to large dots. Press seam toward pocket. **UNDERSTITCH** pocket between large dots.



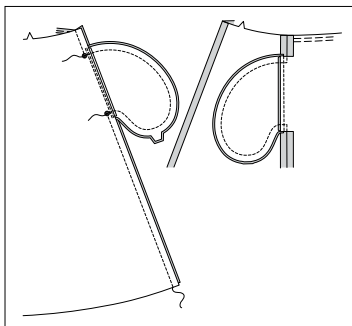
- Turn left pocket to inside. Press.

15



15. Open out pocket. With RIGHT sides together, pin remaining pocket to left pocket matching large dots, having raw edges even. Stitch side and lower edges of pocket, keeping skirt free. Turn in pocket. Baste side edges.

16



16. Pin skirt front and skirt back together at right side edges. Pin right pocket edges together. Stitch, leaving open between large dots. Stitch pocket edges together to side seam. Clip back seam allowance above and below pocket. Turn pocket to front along seamline. Press.

17. With RIGHT sides together, pin skirt to bodice, matching centers and small dots. Pull up gathering stitches and adjust gathers evenly. Baste. Stitch. Press seam up.

ZIPPER AND LINING

NOTE: The zipper is longer than the zipper opening and will be adjusted after the zipper is inserted.

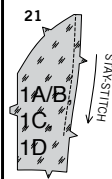
NOTE: Stitch the invisible zipper using an invisible zipper foot

18. Open the zipper and press the tape using a cool iron. On OUTSIDE, pin LEFT side of the zipper face down on the LEFT side of the zipper opening. Have the coil along the seam line, the tape within the seam allowance and the top stop at upper notch, as shown. Hand-baste along center of the tape. Position zipper foot at the top of the zipper with LEFT groove of the foot over coil. Stitch along tape to lower notch. Back-stitch to reinforce.

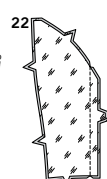
19. Pin the remaining half of the zipper to the RIGHT side of the zipper opening in same manner. Hand-baste along the center of the tape. Position zipper foot at the top of the zipper with RIGHT groove over the coil. Stitch along tape to lower notch. Back-stitch to reinforce.

20. Close zipper and check that it is invisible from the OUTSIDE. Pull the free ends of the zipper tape away from the seam allowance. Pin remaining left side seam together below zipper. Position zipper foot all the way to the LEFT so the needle goes down through the outer notch of the foot. Stitch remainder of seam starting 1/4" (6mm) above lowest stitch and slightly to the LEFT. Stitch remainder of seam to raw end. If you prefer, open out each seam allowance at end of zipper and stitch tape to seam allowance.

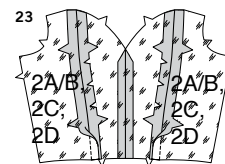
21



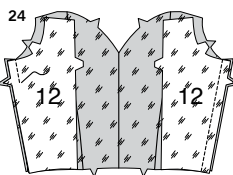
22



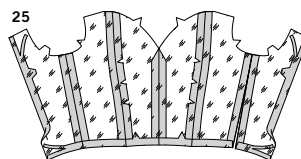
23



24



25



21. STAYSTITCH side edge of bodice front LINING (1A/B, 1C or 1D) above lower notch, as shown.

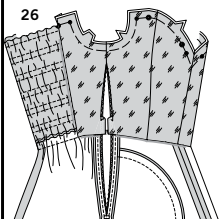
22. Stitch bodice front lining sections together at center front seam.

23. With RIGHT sides together, pin bodice side front LINING (2A/B, 2C or 2D) to side edges of bodice front lining, clipping bodice front lining where necessary. Baste. Stitch.

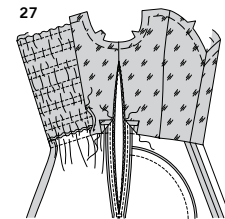
24. Pin bodice side back LINING (12) to bodice front lining at right side. Stitch bodice front lining to bodice side back lining at left side, leaving open below notch.

25. Press under seam allowances on lower and back edges of lining. Trim pressed seam allowances to 3/8" (1cm).

26



27



26. With WRONG sides together, pin lining to bodice, matching centers, notches and dots. Baste upper edges.

27. Turn in seam allowances on left opening edges, clearing zipper teeth. SLIPSTITCH to zipper tape.

SLIPSTITCH pressed edges over seams.

SLEEVE

FOR VIEW A

28. Press under 1/4" (6mm) on upper edge of sleeve (15). Turn upper edge of sleeve to INSIDE along foldline. Press. To form casing for elastic, stitch in place close to inner pressed edge.

29. Cut 1/2" (1.3cm) wide elastic the length of elastic guide for sleeve (16). Insert elastic through casing, having raw edges even. Baste.

30. Stitch sleeve seam.

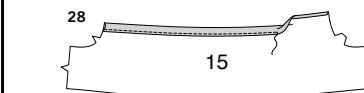
31. Make NARROW HEM at lower edge of sleeve.

32. With RIGHT sides together, pin sleeve to armhole edge, matching notches and small dots. Baste.

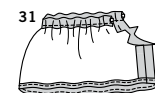
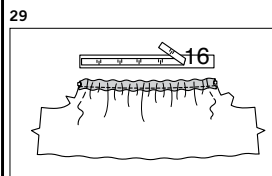
FOR VIEW B

33. REINFORCE sleeve (22) through outer small dots, as shown. Clip to small dots.

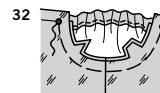
28



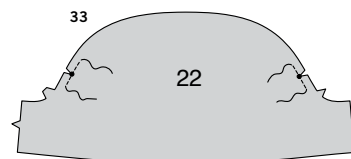
29

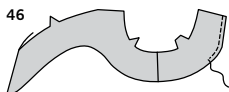
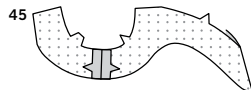
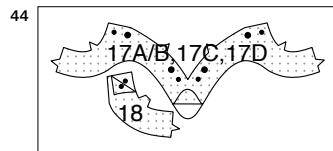
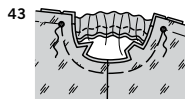
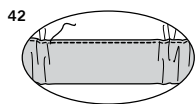
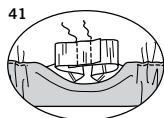
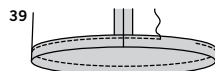
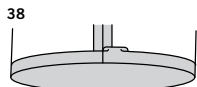
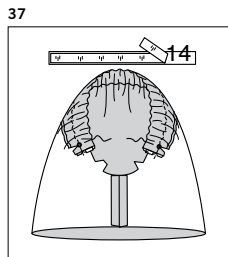
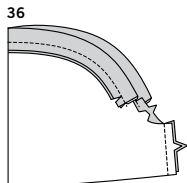
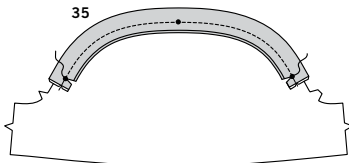
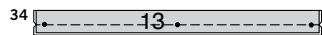


32



33





34. With WRONG sides together, for casing, fold shoulder strap (13) in half lengthwise, having raw edges even, matching small dots. Press. Baste long edges together.

35. On OUTSIDE, pin shoulder strap to upper edge of sleeve (22), having raw edges even, matching small dots. Stitch between outer small dots. Press seam toward sleeve. Clip shoulder strap to outer small dots.

36. Stitch sleeve seam.

37. Cut 1" (2.54cm) wide elastic the length of elastic guide for strap (14). Insert elastic through casing, having raw edges even. Baste ends.

38. Press under 1/4" (6mm) on lower edge of sleeve.

39. Turn lower edge of sleeve to INSIDE along foldline. Press. To form casing for elastic, stitch in place close to inner pressed edge, leaving an opening to insert elastic.

40. Cut 1/2" (1.3cm) wide elastic the length of elastic guide for sleeve (23).

41. Insert elastic through opening in casing. Overlap ends and hold with a safety pin. Stitch ends of elastic together securely.

42. Stitch opening, stretching elastic while stitching. Distribute fullness evenly.

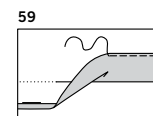
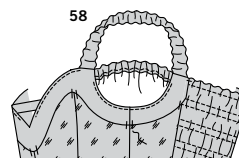
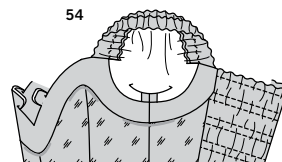
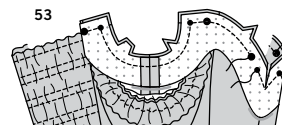
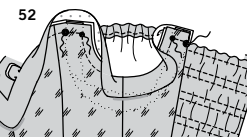
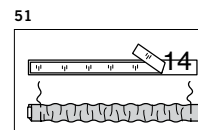
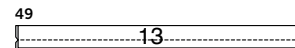
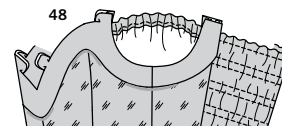
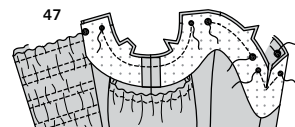
43. With RIGHT sides together, pin sleeve to armhole edge, matching notches and dots. Baste.

FINISHING

44. Apply **INTERFACING** to front facing (17A/B, 17C or 17D). Apply **INTERFACING** to back armhole facing (18).

45. Stitch back armhole facings to front facings at sides, matching notches.

46. **FINISH** lower unnotched edge of facing.



FOR VIEW A

47. With RIGHT sides together, pin facing to upper edges, matching centers, notches and dots. Stitch, continuing along stitching line, leaving openings between small and large dots on front and shoulder edges, as shown. Clip center front facing to stitching, being careful not to cut through stitching. Trim seam allowances at seams.

48. Turn facing to INSIDE; press.

49. With RIGHT sides together, fold shoulder strap (13) in half lengthwise, having raw edges even. Stitch long edge, forming casing for elastic.

50. Turn RIGHT side out. Press.

51. Cut 1" (2.54cm) wide elastic the length of elastic guide for strap (14). Insert elastic through casing, having raw edges even. Baste ends.

52. Open out facing. Insert ends of strap through openings matching small and large dots. For clean finish at top edge of side back turn facing to outside over strap. Pin. Stitch between small and large dots at upper side front and upper side back, catching in straps.

FOR VIEW B

53. With RIGHT sides together, pin facing to upper edges, matching centers, notches and dots. Stitch, continuing along stitching line, pivoting at upper small dots, leaving openings between small and large dots on front, as shown. Clip center front facing to stitching, being careful not to cut through stitching. Trim seam allowances at seams.

54. Turn facing to INSIDE; press.

CONTINUE AS FOLLOWS FOR ALL VIEWS

55. With RIGHT sides together, fold strap (3) in half lengthwise, having raw edges even. Stitch long edge in a 3/8" (1cm) seam, as shown.

56. Turn RIGHT side out. Press. Baste raw edges.

57. Insert ends of strap through front openings, as shown, matching small and large dots. Open out facing. Stitch openings. Trim. **UNDERSTITCH** facing as far as possible.

58. Turn down facing. Tack to lining at seams.

59. Mark dress length. Press up hem along marking. Mark depth of hem; trim evenly. Press under 1/4" (6mm) on raw edge. Stitch close to inner pressed edge.



Congrats!

You've completed your sewing adventure

SHARE YOUR LOOK



Post your pattern and tag us
@simplicity_creative_group and **#simplicitypatterns**
for a chance to be featured on our social media.

Look for more PDF patterns at [simplicity.com](https://www.simplicity.com)

Have a question or need help with your sewing project call us at
1-888-588-2700



Simplicity ©2024 a division of IG Design Group Americas Inc. • Atlanta, GA 30342 USA www.thedesigngroup.com • All Rights Reserved. www.simplicity.com • Made in the U.S.A. Fabriqué aux États-Unis.

To be used for individual private home use only and not for commercial or manufacturing purposes. • A usage privé seulement et non à des fins commerciales ou de production en série. • Para uso privado solamente, no se puede utilizar con propósitos de comercialización o de producción en serie.