

S9918

**Simplicity**



A



B

Designed and printed in USA.



B

**MISSES' DRESS (WITH A/B,C,D CUP SIZES) WITH SLEEVE AND LENGTH VARIATIONS** Average

**Suggested Fabrics:** Challis, Crepe, Lightweight Poplin, Linen Types, Sateen, Silky Types, Soft Cotton Types. **Lining:** Polyester, Rayons. **Interfacing:** Lightweight Fusible.

**Notions:** A,B: One 14" (36cm) invisible zipper, 1 yd. (0.8m) of 1¼" (3cm) elastic, ¼ yd. (0.8m) of ½" (1.3cm) elastic, 2¼ yds. (2.2m) of ¼" (1cm) elastic.

Sizes	4	6	8	10	12	14	16	18	20
European	30	32	34	36	38	40	42	44	46

**BODY MEASUREMENTS: Select pattern size based on body measurements**

<b>Bust</b>	29½	30½	31½	32½	34	36	38	40	42	Ins.
<b>Waist</b>	22	23	24	25	26½	28	30	32	34	"
<b>Hip-9" below waist</b>	31½	32½	33½	34½	36	38	40	42	44	"
<b>Back-neck to waist</b>	15¼	15½	15¾	16	16¼	16½	16¾	17	17¼	"

<b>Lining A,B</b>	45***	½	½	½	½	½	½	¾	¾	Yd.
<b>Interfacing</b>	20"	-	¾	¾	¾	¾	¾	¾	¾	Yd.

<b>Dress A</b>	45**	2¼	2¼	2¼	2¼	2¼	3¼	3¼	3¼	3¼	Yds.
	60**	2	2	2	2	2	2¼	2¼	2¼	2½	"

<b>Dress B</b>	45**	3¼	3¼	3¼	3¼	3¼	3¼	3¼	3¼	3¼	Yds.
	60**	2¼	2¼	2¼	2¼	2¼	2¼	2¼	3	3	"

**FINISHED GARMENT MEASUREMENTS (Includes Design and Wearing Ease)**

<b>A/B Bust Cup</b>	33½	34½	35½	36½	38	40	42	44	46	Ins.
<b>C Bust Cup</b>	34½	35½	36½	37½	39	41	43	45	47	"
<b>D Bust Cup</b>	35½	36½	37½	38½	40	42	44	46	48	"
<b>A,B Waist</b>	23	24	25	26	27½	29½	31½	33½	35½	"
<b>A,B Hip</b>	44	45	46	47	48½	50½	52½	54½	56½	"
<b>Width, lower edge</b>										
<b>Dress A</b>	62½	63½	64½	65½	67	69	71	73	75	Ins.
<b>Dress B</b>	71½	72½	73½	74½	76	78	80	82	84	"
<b>Finished back length from base of neck</b>										
<b>Dress A</b>	40¼	40½	40¾	41	41¼	41½	41¾	42	42¼	Ins.
<b>Dress B</b>	48¼	48½	48¾	49	49¼	49½	49¾	50	50¼	"

\*with nap \*\*without nap

**ROBE (AVEC TAILLES DE BONNET A/B,C,D) AVEC VARIATIONS DE MANCHES ET DE LONGUEURS POUR JEUNES FEMMES** Moins Facile

**Tissus Conseillés:** Challis, Crepe, Popeline léger, Sortes de toile de lin, Satin de coton, Tissus soyeux, Sortes de coton souples. **Doublure:** Polyester, Rayonnes. **Entoilage:** Thermocollant léger.

**Mercerie:** A,B: 1 fermeture à glissière invisible de 36cm, 0.8m d'élastique de 3cm, 0.8m d'élastique de 1.3cm, 2.2m d'élastique de 1cm.

Tailles	4	6	8	10	12	14	16	18	20
Françaises	32	34	36	38	40	42	44	46	48
Europèen	30	32	34	36	38	40	42	44	46

**MESURES DU CORPS: Choisissez la taille du patron basée sur les mesures du corps**

<b>Poitrine</b>	75	78	80	83	87	92	97	102	107	cm
<b>Taille</b>	56	58	61	64	67	71	76	81	87	"

<b>Hanches (23cm au-dessous de la taille)</b>	80	83	85	88	92	97	102	107	112	cm
<b>Dos du cou à la taille</b>	38.5	39.5	40	40.5	41.5	42	42.5	43	44	"

<b>Doublure A,B</b>	115cm**	0.5	0.5	0.5	0.5	0.5	0.5	0.6	0.6	m
<b>Entoilage</b>	51cm	-	0.8m							

<b>Robe A</b>	115cm*	2.6	2.6	2.6	2.6	2.6	2.9	3.0	3.0	3.0	m
	150cm*	1.8	1.9	1.9	1.9	1.9	1.9	2.1	2.2	2.3	"

<b>Robe B</b>	115cm*	2.9	3.0	3.0	3.1	3.1	3.4	3.4	3.4	3.4	m
	150cm*	2.3	2.4	2.4	2.4	2.5	2.6	2.6	2.7	2.7	"

**MESURES DES VÊTEMENTS FINI (Motif et aisance de port compris)**

<b>A/B Poitrine-Bonnet</b>	85	88	90	93	97	102	107	112	117	cm
<b>C Poitrine-Bonnet</b>	88	90	93	95	99	104	109	114	119	"
<b>D Poitrine-Bonnet</b>	90	93	95	98	102	107	112	117	122	"
<b>A,B Taille</b>	58	61	64	66	70	75	80	85	90	"
<b>A,B Hanches</b>	112	114	117	119	123	128	133	138	144	"
<b>Largeur à l'ourlet</b>										
<b>Dress A</b>	159	161	164	166	170	175	180	185	191	cm
<b>Dress B</b>	182	184	187	189	193	198	203	208	213	"
<b>Longueur finie - dos, votre nuque à l'ourlet</b>										
<b>Dress A</b>	102	103	104	104	105	105	106	107	107	cm
<b>Dress B</b>	123	123	124	124	125	126	126	127	128	"

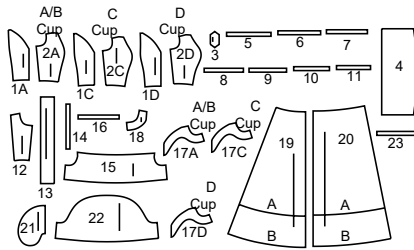
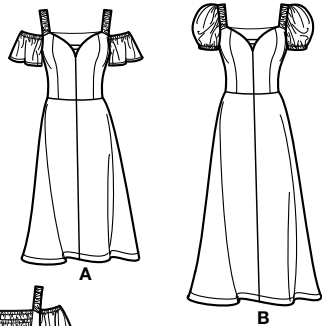
\*avec sens \*\*sans sens



A

# Simplicity

Thank you for purchasing this Simplicity pattern. We made every effort to provide you with a high quality product.



- 1A Bodice Front-A,B (A/B Cup)
- 1C Bodice Front-A,B (C Cup)
- 1D Bodice Front-A,B (D Cup)
- 2A Bodice Side Front-A,B (A/B Cup)
- 2C Bodice Side Front-A,B (C Cup)
- 2D Bodice Side Front-A,B (D Cup)
- 3 Strap-A,B
- 4 Bodice Back-A,B
- 5 Elastic Guide for Back 1-A,B
- 6 Elastic Guide for Back 2-A,B
- 7 Elastic Guide for Back 3-A,B
- 8 Elastic Guide for Back 4-A,B
- 9 Elastic Guide for Back 5-A,B
- 10 Elastic Guide for Back 6-A,B
- 11 Elastic Guide for Back 7-A,B
- 12 Bodice Side Back-A,B
- 13 Shoulder Strap-A,B
- 14 Elastic Guide for Shoulder Strap-A,B
- 15 Sleeve-A
- 16 Elastic Guide for Sleeve-A
- 17A Front Facing-A,B (A/B Cup)
- 17C Front Facing-A,B (C Cup)
- 17D Front Facing-A,B (D Cup)
- 18 Back Armhole Facing-A,B
- 19 Skirt Front-A,B
- 20 Skirt Back-A,B
- 21 Pocket-A,B
- 22 Sleeve-B
- 23 Elastic Guide for Sleeve-B

## General Directions

### The Pattern

- SYMBOLS**
- GRAIN LINE: Place on straight grain of fabric parallel to selvage
  - PLACE SOLID LINE on fold of fabric.
  - CENTER FRONT OR BACK of garment.
  - NOTCHES
  - DOTS
  - CUTTING LINE
  - LENGTHEN OR SHORTEN LINES

SEAM ALLOWANCE: 5/8" (1.5cm) unless otherwise stated is included but not printed on MULTI-SIZE PATTERNS. Mark your size with colored felt tip pen. See chart on tissue for how to use MULTI-SIZE PATTERNS.

### ADJUST IF NEEDED

Make adjustments before placing pattern on fabric.

**TO LENGTHEN:** Cut pattern between lengthen or shorten lines. Spread pattern evenly, the amount needed and tape to paper.

**TO SHORTEN:** At lengthen or shorten lines, make an even pleat taking up amount needed. Tape in place.

When lengthen or shorten lines are not given, make adjustments at lower edge of pattern.

### Cutting/Marking

#### BEFORE CUTTING:

PRESS pattern pieces with a warm dry iron. PRE-SHRINK fabric by pre-washing washables or steam-pressing non-washables.

CIRCLE your cutting layout.

PIN pattern to fabric as shown in Cutting Layouts.

FOR DOUBLE THICKNESS: Fold fabric with RIGHT sides together.

FOR SINGLE THICKNESS: Place fabric RIGHT side up.

FOR PILE, SHADED OR ONE WAY DESIGN FABRICS: Use "with nap" layouts

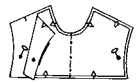
#### AFTER CUTTING:

Transfer markings to WRONG side of fabric before removing pattern. Use pin and chalk method or dressmaker's tracing paper and wheel.

#### To Quick Mark:

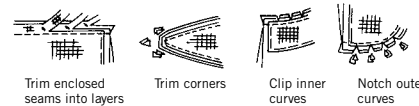
Snip edge of fabric to mark notches, ends of fold lines and center lines.

Pin mark dots.



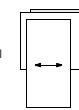
### Sewing

- SEW garment following Sewing Directions.
- PIN or machine-baste seams matching notches.
- STITCH 5/8" (1.5 cm) seams unless otherwise stated.
- PRESS seams open unless otherwise indicated clipping when necessary so seams will lie flat.
- TRIM seams to reduce bulk, as shown below.

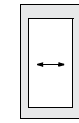


### SPECIAL CUTTING NOTES

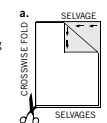
If layout shows a piece extending past fold, cut out all pieces except piece that extends.



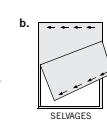
Open out fabric to single thickness. Cut extending piece on RIGHT side of fabric in position shown.



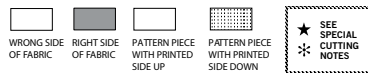
Mark small arrows along both selvages indicating direction of nap or design. Fold fabric crosswise with RIGHT sides together, and cut along fold (a).



Turn one fabric layer around so arrows on both layers go in the same direction. Place RIGHT sides together (b).



## Cutting Layouts



POSITION OF PATTERN PIECES MAY VARY SLIGHTLY ACCORDING TO YOUR PATTERN SIZE

### INTERFACING A,B

USE PIECES 17 18  
**NOTE:** Layouts shown for D Cup.  
For A/B Cup: Substitute piece 17A/B for piece 17D

For C Cup: Substitute piece 17C for piece 17D

20" (51CM)  
ALL SIZES

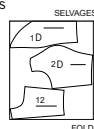


### LINING A,B

USE PIECES 1 2 12  
**NOTE:** Layouts shown for D Cup.  
For A/B Cup: Substitute pieces 1A/B,2A/B for pieces 1D,2D

For C Cup: Substitute pieces 1C,2C for pieces 1D,2D

45" (115CM)  
WITHOUT NAP  
ALL SIZES

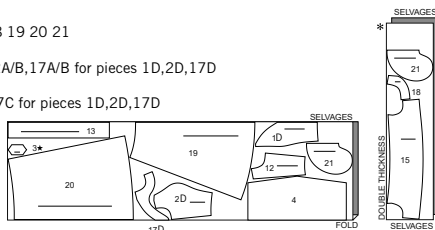


### DRESS A

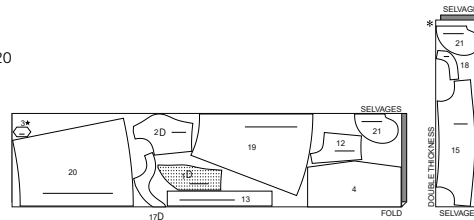
USE PIECES 1 2 3 4 12 13 15 17 18 19 20 21  
**NOTE:** Layouts shown for D Cup.  
For A/B Cup: Substitute pieces 1A/B,2A/B,17A/B for pieces 1D,2D,17D

For C Cup: Substitute pieces 1C,2C,17C for pieces 1D,2D,17D

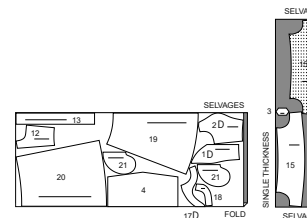
45" (115CM)  
WITH NAP  
SIZES 4 6 8 10 12



45" (115CM)  
WITH NAP  
SIZES 14 16 18 20



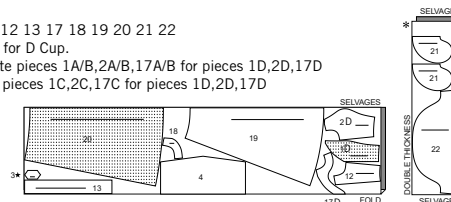
60" (150CM)  
WITH NAP  
ALL SIZES



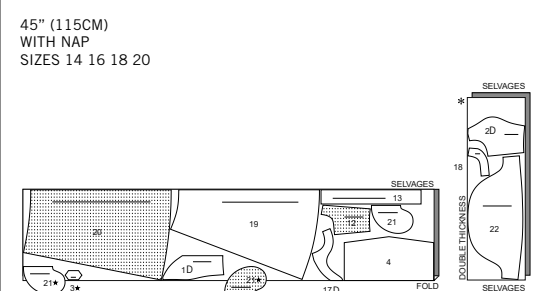
### DRESS B

USE PIECES 1 2 3 4 12 13 17 18 19 20 21 22  
**NOTE:** Layouts shown for D Cup.  
For A/B Cup: Substitute pieces 1A/B,2A/B,17A/B for pieces 1D,2D,17D  
For C Cup: Substitute pieces 1C,2C,17C for pieces 1D,2D,17D

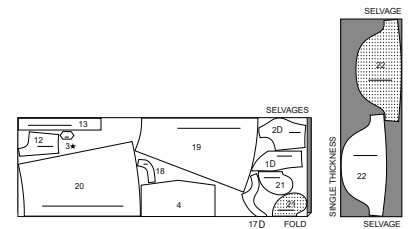
45" (115CM)  
WITH NAP  
SIZES 4 6 8 10 12



45" (115CM)  
WITH NAP  
SIZES 14 16 18 20



60" (150CM)  
WITH NAP  
ALL SIZES



## Sewing Directions

FABRIC KEY RIGHT SIDE WRONG SIDE INTERFACING LINING LINING

Read **General Directions** on page 1 before you begin.

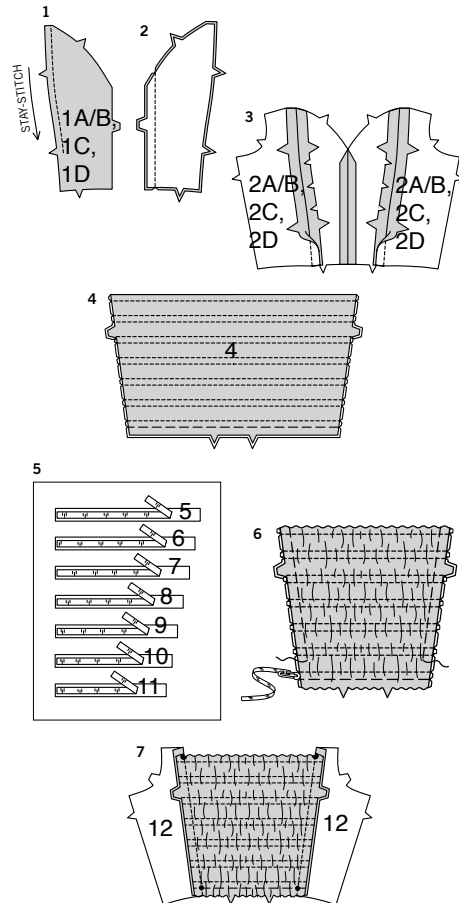
Sewing methods in **BOLD TYPE** have Sewing Tutorial Video available. Scan QR CODE to watch videos:

SEWING TUTORIALS



SCAN ME

Build your skills viewing short, easy-to-follow videos at [simplicity.com/sewingtutorials](https://www.simplicity.com/sewingtutorials)



- EASE/GATHER** - See **sewing two row gathers** video.  
**FINISH** - See **how to finish seam allowances** video.  
**NARROW HEM** - See **sewing narrow hems** video.  
**REINFORCE** - See **how to reinforce** video.  
**SLIPSTITCH** - See **how to slipstitch** video.  
**STAYSTITCH** - See **how to do stay-stitching** video.  
**UNDERSTITCH** - See **how to understitch** video.

**PATTERN PIECES WILL BE IDENTIFIED BY NUMBERS THE FIRST TIME THEY ARE USED.**

**STITCH 5/8" (1.5CM) SEAMS WITH RIGHT SIDES TOGETHER UNLESS OTHERWISE STATED.**

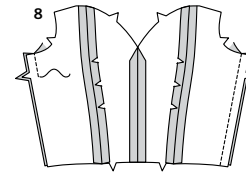
### DRESS A, B

**NOTE:** View A will be illustrated, unless otherwise indicated.

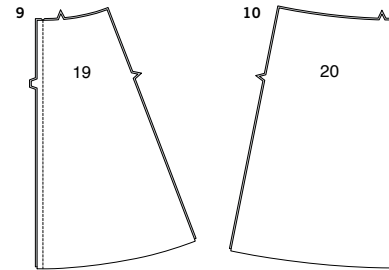
**INTERFACING** - Pin interfacing to **WRONG** side of fabric. Fuse interfacing in place following manufacturer's directions.

#### BODICE

- STAYSTITCH** side edge of bodice front (1A/B, 1C or 1D) above lower notch, as shown.
- Stitch bodice front sections together at center front seam.
- With **RIGHT** sides together, pin bodice side front (2A/B, 2C or 2D) to side edges of bodice front, clipping bodice front where necessary. Baste. Stitch.
- With **WRONG** sides together, fold bodice back (4) along foldline. Baste lower edges and along stitching lines. Stitch along stitching lines.
- Cut seven pieces of 3/8" (1cm) wide elastic the length of each elastic guide for back (5, 6, 7, 8, 9, 10 and 11).
- Insert elastic through casings, having raw edges even, beginning with upper casing, inserting elastic in order. Stitch ends of casings, catching elastic in stitching. Baste side edges.
- Pin bodice side back (12) to back, matching notches. Stitch. Press seams toward bodice side back.

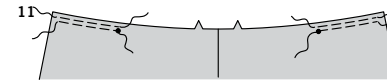


- Stitch bodice front to bodice back at right side. Stitch bodice front to bodice back at left side, leaving open below notch.

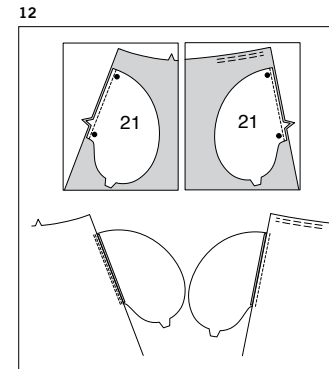


#### SKIRT

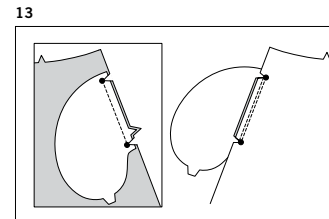
- Stitch skirt front (19) sections together at center front seam.
- Stitch skirt back (20) sections together at center back seam.



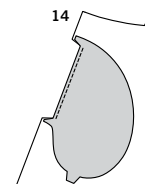
- GATHER** upper edge of skirt back between small dots and side seamlines, as shown.



- With **RIGHT** sides together, pin one **POCKET** (21) section to right side edge of skirt front and skirt back, matching notches and large dots. Stitch in 3/8" (1cm) seams. Press seams toward pockets. **UNDERSTITCH** front pocket.

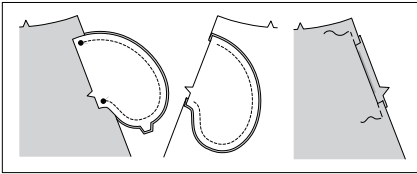


- With **RIGHT** sides together, pin one remaining pocket section to left side edge of skirt front. Stitch pocket along seamline between large dots. Clip to large dots. Press seam toward pocket. **UNDERSTITCH** pocket between large dots.



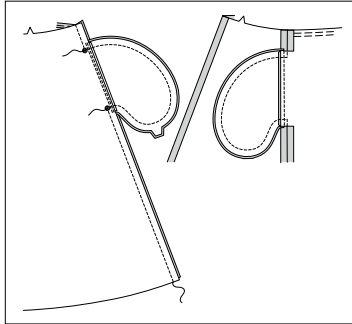
- Turn left pocket to inside. Press.

15



**15.** Open out pocket. With **RIGHT** sides together, pin remaining pocket to left pocket matching large dots, having raw edges even. Stitch side and lower edges of pocket, keeping skirt free. Turn in pocket. Baste side edges.

16



**16.** Pin skirt front and skirt back together at right side edges. Pin right pocket edges together. Stitch, leaving open between large dots. Stitch pocket edges together to side seam. Clip back seam allowance above and below pocket. Turn pocket to front along seamline. Press.

**17.** With **RIGHT** sides together, pin skirt to bodice, matching centers and small dots. Pull up gathering stitches and adjust gathers evenly. Baste. Stitch. Press seam up.

#### ZIPPER AND LINING

**NOTE:** The zipper is longer than the zipper opening and will be adjusted after the zipper is inserted.

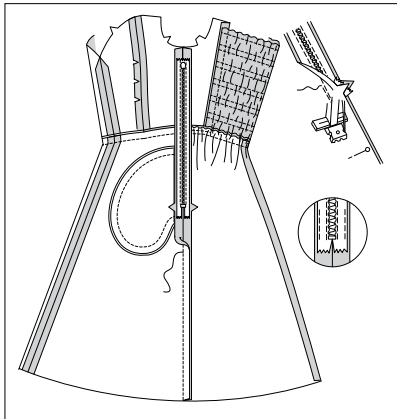
**NOTE:** Stitch the invisible zipper using an invisible zipper foot

**18.** Open the zipper and press the tape using a cool iron. On **OUTSIDE**, pin **LEFT** side of the zipper face down on the **LEFT** side of the zipper opening. Have the coil along the seam line, the tape within the seam allowance and the top stop at upper notch, as shown. Hand-baste along center of the tape. Position zipper foot at the top of the zipper with **LEFT** groove of the foot over coil. Stitch along tape to lower notch. Back-stitch to reinforce.

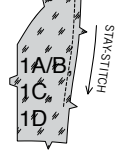
**19.** Pin the remaining half of the zipper to the **RIGHT** side of the zipper opening in same manner. Hand-baste along the center of the tape. Position zipper foot at the top of the zipper with **RIGHT** groove over the coil. Stitch along tape to lower notch. Back-stitch to reinforce.

**20.** Close zipper and check that it is invisible from the **OUTSIDE**. Pull the free ends of the zipper tape away from the seam allowance. Pin remaining left side seam together below zipper. Position zipper foot all the way to the **LEFT** so the needle goes down through the outer notch of the foot. Stitch remainder of seam starting 1/4" (6mm) above lowest stitch and slightly to the **LEFT**. Stitch remainder of seam to raw end. If you prefer, open out each seam allowance at end of zipper and stitch tape to seam allowance.

20



21

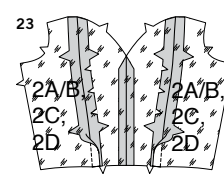


STAYSTITCH

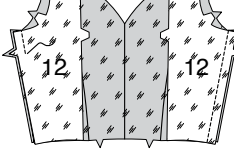
22



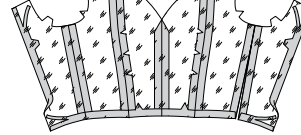
23



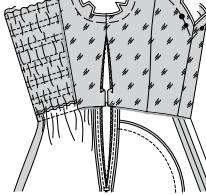
24



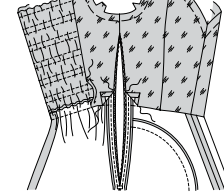
25



26



27



**21.** **STAYSTITCH** side edge of bodice front **LINING** (1A/B, 1C or 1D) above lower notch, as shown.

**22.** Stitch bodice front lining sections together at center front seam.

**23.** With **RIGHT** sides together, pin bodice side front **LINING** (2A/B, 2C or 2D) to side edges of bodice front lining, clipping bodice front lining where necessary. Baste. Stitch.

**24.** Pin bodice side back **LINING** (12) to bodice front lining at right side. Stitch bodice front lining to bodice side back lining at left side, leaving open below notch.

**25.** Press under seam allowances on lower and back edges of lining. Trim pressed seam allowances to 3/8" (1cm).

**26.** With **WRONG** sides together, pin lining to bodice, matching centers, notches and dots. Baste upper edges.

**27.** Turn in seam allowances on left opening edges, clearing zipper teeth. **SLIPSTITCH** to zipper tape.

**SLIPSTITCH** pressed edges over seams.

#### SLEEVE

##### FOR VIEW A

**28.** Press under 1/4" (6mm) on upper edge of sleeve (15). Turn upper edge of sleeve to **INSIDE** along foldline. Press. To form casing for elastic, stitch in place close to inner pressed edge.

**29.** Cut 1/2" (1.3cm) wide elastic the length of elastic guide for sleeve (16). Insert elastic through casing, having raw edges even. Baste.

**30.** Stitch sleeve seam.

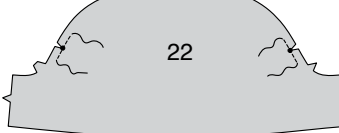
**31.** Make **NARROW HEM** at lower edge of sleeve.

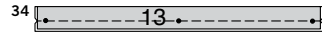
**32.** With **RIGHT** sides together, pin sleeve to armhole edge, matching notches and small dots. Baste.

##### FOR VIEW B

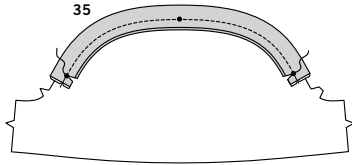
**33.** **REINFORCE** sleeve (22) through outer small dots, as shown. Clip to small dots.

33

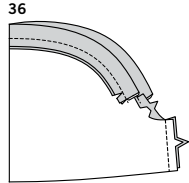




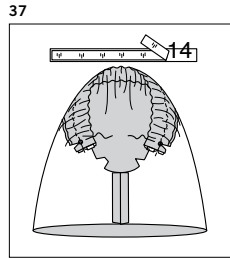
**34.** With WRONG sides together, for casing, fold shoulder strap (13) in half lengthwise, having raw edges even, matching small dots. Press. Baste long edges together.



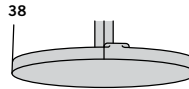
**35.** On OUTSIDE, pin shoulder strap to upper edge of sleeve (22), having raw edges even, matching small dots. Stitch between outer small dots. Press seam toward sleeve. Clip shoulder strap to outer small dots.



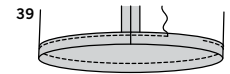
**36.** Stitch sleeve seam.



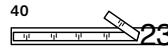
**37.** Cut 1" (2.54cm) wide elastic the length of elastic guide for strap (14). Insert elastic through casing, having raw edges even. Baste ends.



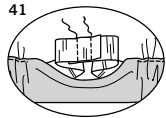
**38.** Press under 1/4" (6mm) on lower edge of sleeve.



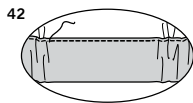
**39.** Turn lower edge of sleeve to INSIDE along foldline. Press. To form casing for elastic, stitch in place close to inner pressed edge, leaving an opening to insert elastic.



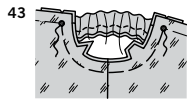
**40.** Cut 1/2" (1.3cm) wide elastic the length of elastic guide for sleeve (23).



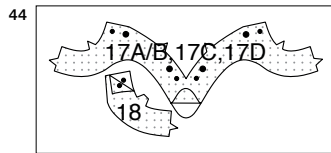
**41.** Insert elastic through opening in casing. Overlap ends and hold with a safety pin. Stitch ends of elastic together securely.



**42.** Stitch opening, stretching elastic while stitching. Distribute fullness evenly.

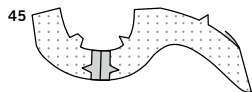


**43.** With RIGHT sides together, pin sleeve to armhole edge, matching notches and dots. Baste.

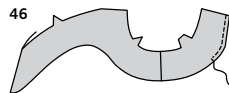


#### FINISHING

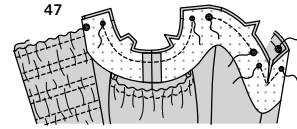
**44.** Apply **INTERFACING** to front facing (17A/B, 17C or 17D). Apply **INTERFACING** to back armhole facing (18).



**45.** Stitch back armhole facings to front facings at sides, matching notches.



**46.** **FINISH** lower unnotched edge of facing.

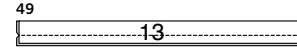


#### FOR VIEW A

**47.** With RIGHT sides together, pin facing to upper edges, matching centers, notches and dots. Stitch, continuing along stitching line, leaving openings between small and large dots on front and shoulder edges, as shown. Clip center front facing to stitching, being careful not to cut through stitching. Trim seam allowances at seams.



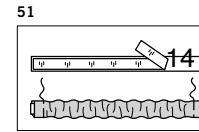
**48.** Turn facing to INSIDE; press.



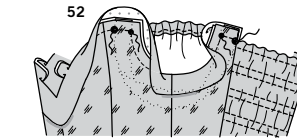
**49.** With RIGHT sides together, fold shoulder strap (13) in half lengthwise, having raw edges even. Stitch long edge, forming casing for elastic.



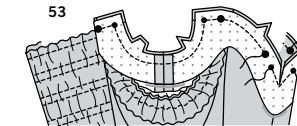
**50.** Turn RIGHT side out. Press.



**51.** Cut 1" (2.54cm) wide elastic the length of elastic guide for strap (14). Insert elastic through casing, having raw edges even. Baste ends.

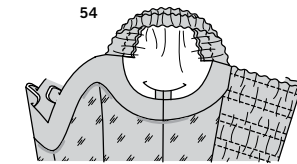


**52.** Open out facing. Insert ends of strap through openings matching small and large dots. For clean finish at top edge of side back turn facing to outside over strap. Pin. Stitch between small and large dots at upper side front and upper side back, catching in straps.



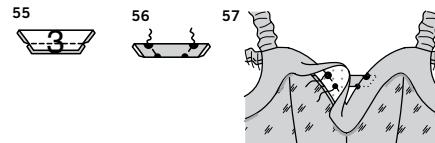
#### FOR VIEW B

**53.** With RIGHT sides together, pin facing to upper edges, matching centers, notches and dots. Stitch, continuing along stitching line, pivoting at upper small dots, leaving openings between small and large dots on front, as shown. Clip center front facing to stitching, being careful not to cut through stitching. Trim seam allowances at seams.



**54.** Turn facing to INSIDE; press.

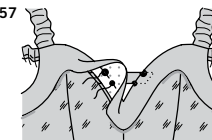
#### CONTINUE AS FOLLOWS FOR ALL VIEWS



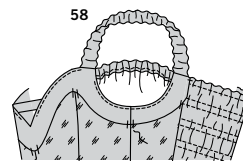
**55.** With RIGHT sides together, fold strap (3) in half lengthwise, having raw edges even. Stitch long edge in a 3/8" (1cm) seam, as shown.



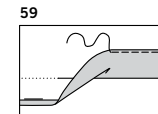
**56.** Turn RIGHT side out. Press. Baste raw edges.



**57.** Insert ends of strap through front openings, as shown, matching small and large dots. Open out facing. Stitch openings. Trim. **UNDERSTITCH** facing as far as possible.



**58.** Turn down facing. Tack to lining at seams.



**59.** Mark dress length. Press up hem along marking. Mark depth of hem; trim evenly. Press under 1/4" (6mm) on raw edge. Stitch close to inner pressed edge.



# Congrats!

You've completed your sewing adventure

---

**SHARE  
YOUR** LOOK



Post your pattern and tag us  
**@simplicity\_creative\_group** and **#simplicitypatterns**  
for a chance to be featured on our social media.

Look for more PDF patterns at [simplicity.com](https://www.simplicity.com)

Have a question or need help with your sewing project call us at  
1-888-588-2700



Simplicity ©2024 a division of IG Design Group Americas Inc. • Atlanta, GA 30342 USA [www.thedesigngroup.com](https://www.thedesigngroup.com) • All Rights Reserved. [www.simplicity.com](https://www.simplicity.com) • Made in the U.S.A. Fabriqué aux États-Unis.

To be used for individual private home use only and not for commercial or manufacturing purposes. • A usage privé seulement et non à des fins commerciales ou de production en série. • Para uso privado solamente, no se puede utilizar con propósitos de comercialización o de producción en serie.