

S9917

miG A DIY & LIFESTYLE BRAND



Scan QR code for a Sew-Along tutorial by sewing celebrity Mimi G.

Simplicity

Designed and printed in USA.

Average

MISSES' DRESSES AND BELT

Suggested Fabrics: Challis, Chambray, Crepe, Lawn, Lightweight Sateen, Satin, Silky Types. **Lining:** Lining Fabrics. **Interfacing:** Lightweight Fusible.

Notions: **A,B:** One 14" (36cm) invisible zipper, one 2" (5cm) slide buckle. **Also for A:** 2 yds. (1.8m) of ¼" (6mm) featherweight boning. **Also for B:** Pair of ¾" (1cm) bra slides and rings.

Sizes	8	10	12	14	16	18	20	22	24	26
European	34	36	38	40	42	44	46	48	50	52

BODY MEASUREMENTS: Select pattern size based on body measurements

Bust	31½	32½	34	36	38	40	42	44	46	48	Ins.
Waist	24	25	26½	28	30	32	34	37	39	41½	"
Hip-9" below waist	33½	34½	36	38	40	42	44	46	48	50	"
Back-neck to waist	15¾	16	16¾	16½	16¾	17	17¼	17¾	17½	17¾	"

Lining A,B	45***	¾	½	½	½	¾	¾	¾	¾	¾	Yd.
-------------------	-------	---	---	---	---	---	---	---	---	---	-----

Dress A	45**	3%	3%	3%	3%	3%	3%	3%	3%	3%	Yds.
	60**	2½	2½	2½	2½	2½	2½	3%	3%	3%	"

Interfacing 20" - 3¼ yds.

Dress B	45**	5½	5½	5½	5½	5½	5½	5%	5%	6	6	Yds.
	60**	5¼	5¼	5¼	5½	5½	5½	5½	5½	5½	5½	"

Interfacing 20" - 3% yds.

FINISHED GARMENT MEASUREMENTS (Includes Design and Wearing Ease)

A,B Bust	34	35	36½	38½	40½	42½	44½	46½	48½	50½	Ins.
A,B Waist	26	27	28½	30½	32½	34½	36½	38½	40½	42½	"

Finished back length from base of neck

Dress A	33¾	34	34¼	34½	34¾	35	35¼	35½	35¾	36	Ins.
Dress B	52¾	53	53¼	53½	53¾	54	54¼	54½	54¾	55	"

*with nap **without nap

Moins Facile

ROBES ET CEINTURE POUR JEUNES FEMMES

Tissus Conseillés: Challis, Chambray, Crepe, Linon, Satin de coton léger, Satin, Tissus soyeux. **Doublure:** Tissus à doublure. **Entoilage:** Thermocollant léger.

Mercerie: **A,B:** 1 fermeture à glissière invisible de 36cm, 1 boucle coulissante de 5cm. **Aussi pour A:** 1.8m de baleine de poids très léger de 6mm. **Aussi pour B:** Paire de réglieurs soutien-gorge de 1cm.

Tailles	8	10	12	14	16	18	20	22	24	26
Françaises	36	38	40	42	44	46	48	50	52	54
Européen	34	36	38	40	42	44	46	48	50	52

MESURES DU CORPS: Choisissez la taille du patron basée sur les mesures du corps

Poitrine	80	83	87	92	97	102	107	112	117	122	cm
Taille	61	64	67	71	76	81	87	94	99	106	"

Hanches (23cm au-dessous de la taille)

	85	88	92	97	102	107	112	117	122	127	cm
--	----	----	----	----	-----	-----	-----	-----	-----	-----	----

Dos du cou à la taille	40	40.5	41.5	42	42.5	43	44	44	44.5	44.5	"
-------------------------------	----	------	------	----	------	----	----	----	------	------	---

Doublure A,B	115cm**	0.3	0.3	0.3	0.5	0.5	0.5	0.6	0.6	0.6	m
---------------------	---------	-----	-----	-----	-----	-----	-----	-----	-----	-----	---

Robe A	115cm*	2.7	2.9	2.9	2.9	2.9	2.9	3.2	3.2	3.3	3.3	m
	150cm*	2.2	2.2	2.2	2.3	2.3	2.4	2.5	2.6	2.6	2.6	"

Entoilage 51cm - 3.0m

Robe B	115cm*	4.2	4.2	4.3	4.3	4.3	4.7	4.7	4.7	4.7	4.7	m
	150cm*	4.0	4.0	4.1	4.1	4.2	4.2	4.2	4.2	4.2	4.2	"

Entoilage 51cm - 3.3m

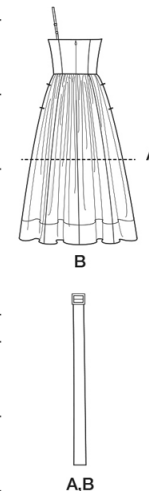
MESURES DES VÊTEMENTS FINI (Motif et aisance de port compris)

A,B Poitrine	86	89	93	98	103	108	113	118	123	128	cm
A,B Taille	66	69	72	77	83	88	93	98	103	108	"

Longueur finie – dos, votre nuque à l'ourlet

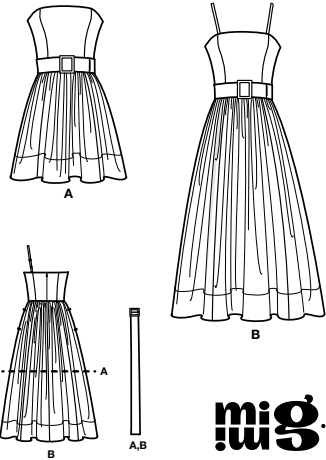
Robe A	86	86	87	88	88	89	90	90	91	91	cm
Robe B	134	135	135	136	137	137	138	138	139	140	"

*avec sens **sans sens



Simplicity

Thank you for purchasing this Simplicity pattern. We made every effort to provide you with a high quality product.



mi g A DIY & LIFESTYLE BRAND

General Directions

The Pattern

- SYMBOLS**
- GRAIN LINE: Place on straight grain of fabric parallel to selvage
 - PLACE SOLID LINE on fold of fabric.
 - CENTER FRONT OR BACK of garment.
 - NOTCHES
 - DOTS
 - CUTTING LINE
 - LENGTHEN OR SHORTEN LINES
- SEAM ALLOWANCE: 5/8" (1.5cm) unless otherwise stated is included but not printed on MULTI-SIZE PATTERNS. Mark your size with colored felt tip pen. See chart on tissue for how to use MULTI-SIZE PATTERNS.

- ADJUST IF NEEDED**
- Make adjustments before placing pattern on fabric.
- TO LENGTHEN:** Cut pattern between lengthen or shorten lines. Spread pattern evenly, the amount needed and tape to paper.
- TO SHORTEN:** At lengthen or shorten lines, make an even pleat taking up amount needed. Tape in place.
- When lengthen or shorten lines are not given, make adjustments at lower edge of pattern.

Cutting/Marking

- BEFORE CUTTING:**
- PRESS pattern pieces with a warm dry iron. PRE-SHRINK fabric by pre-washing washables or steam-pressing non-washables.
 - CIRCLE your cutting layout.
 - PIN pattern to fabric as shown in Cutting Layouts.
 - FOR DOUBLE THICKNESS: Fold fabric with RIGHT sides together.
 - FOR SINGLE THICKNESS: Place fabric RIGHT side up.
 - FOR PILE, SHADED OR ONE WAY DESIGN FABRICS: Use "with nap" layouts

- AFTER CUTTING:**
- Transfer markings to WRONG side of fabric before removing pattern. Use pin and chalk method or dressmaker's tracing paper and wheel.
 - To Quick Mark:**
 - Snip edge of fabric to mark notches, ends of fold lines and center lines.
 - Pin mark dots.

SPECIAL CUTTING NOTES

- If layout shows a piece extending past fold, cut out all pieces except piece that extends. Open out fabric to single thickness. Cut extending piece on RIGHT side of fabric in position shown.
- Mark small arrows along both selvages indicating direction of nap or design. Fold fabric crosswise with RIGHT sides together, and cut along fold (a). Turn one fabric layer around so arrows on both layers go in the same direction. Place RIGHT sides together (b).

Sewing

- SEW garment following Sewing Directions.
 - PIN or machine-baste seams matching notches.
 - STITCH 5/8" (1.5 cm) seams unless otherwise stated.
 - PRESS seams open unless otherwise indicated clipping when necessary so seams will lie flat.
 - TRIM seams to reduce bulk, as shown below.
-

Cutting Layouts

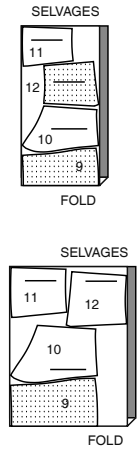
WRONG SIDE OF FABRIC | RIGHT SIDE OF FABRIC | PATTERN PIECE WITH PRINTED SIDE UP | PATTERN PIECE WITH PRINTED SIDE DOWN

★ SEE SPECIAL CUTTING NOTES

POSITION OF PATTERN PIECES MAY VARY SLIGHTLY ACCORDING TO YOUR PATTERN SIZE

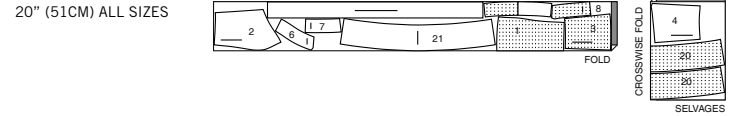
LINING A, B

- USE PIECES 9 10 11 12
- 45" (115CM) WITHOUT NAP SIZES 8 10 12 14
- 45" (115CM) WITHOUT NAP SIZES 16 18 20 22 24 26



INTERFACING A

USE PIECES 1 2 3 4 5 6 7 8 17

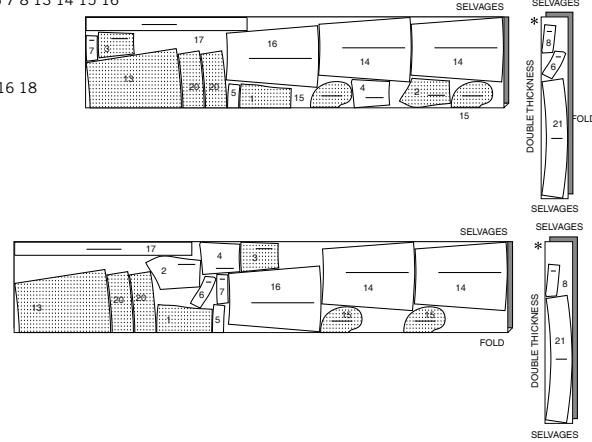


DRESS A

PIECES 1 2 3 4 5 6 7 8 13 14 15 16 17 20 21

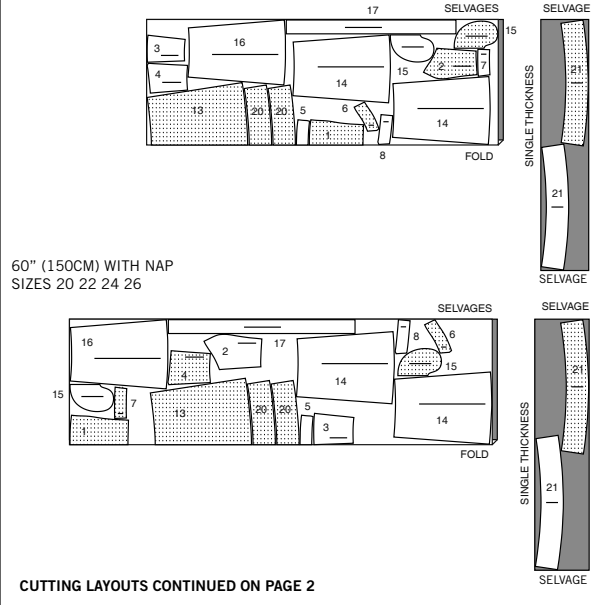
45" (115CM) WITH NAP SIZES 8 10 12 14 16 18

45" (115CM) WITH NAP SIZES 20 22 24 26



60" (150CM) WITH NAP SIZES 8 10 12 14 16 18

60" (150CM) WITH NAP SIZES 20 22 24 26



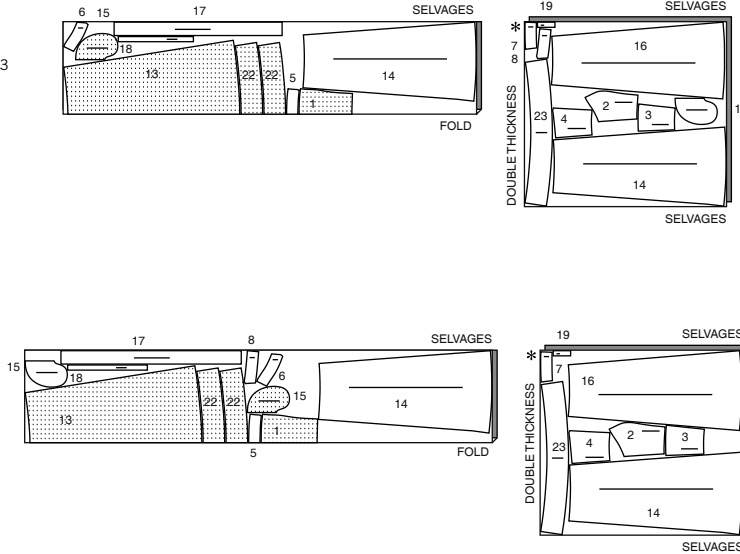
CUTTING LAYOUTS CONTINUED ON PAGE 2

DRESS B

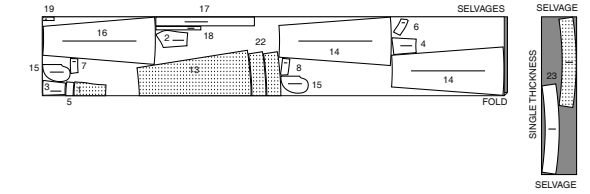
PIECES 1 2 3 4 5 6 7 8 13 14 15 16 17 18 19 22 23

45" (115CM)
WITH NAP
SIZES 8 10 12 14 16 18 20

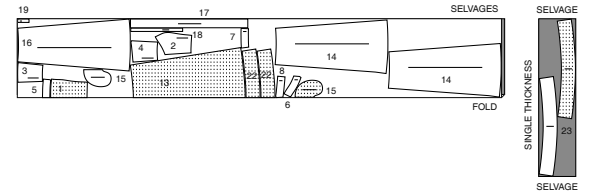
45" (115CM)
WITH NAP
SIZES 22 24 26



60" (150CM)
WITH NAP
SIZES 8 10 12



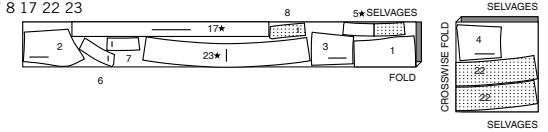
60" (150CM)
WITH NAP
SIZES 14 16 18 20
22 24 26



INTERFACING B

USE PIECES 1 2 3 4 5 6 7 8 17 22 23

20" (51CM)
ALL SIZES



Sewing Directions

FABRIC KEY: RIGHT SIDE, WRONG SIDE, INTERFACING, LINING, LINING

Read **General Directions** on page 1 before you begin.

GLOSSARY OF SEWING METHODS

Sewing methods shown in *ITALICS* are defined below:

GATHER – Loosen needle tension slightly. With **RIGHT** side up, stitch 5/8" (1.5cm) from cut edge using a long stitch. Stitch again 1/4" (6mm) from the first stitching within the seam allowance.

STAY-STITCH – Stitch 1/2" (1.3cm) from cut edge in direction of arrows. This stitching stays in permanently to prevent stretching on curved edges. (Shown only in the first illustration.)

UNDERSTITCH – Press facing and seam away from garment, stitching through facing and seam allowances close to seam.

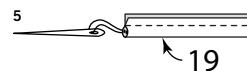
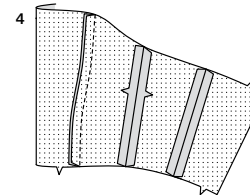
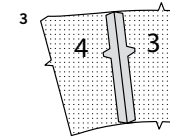
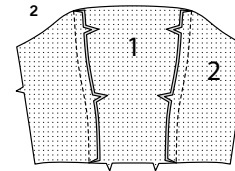
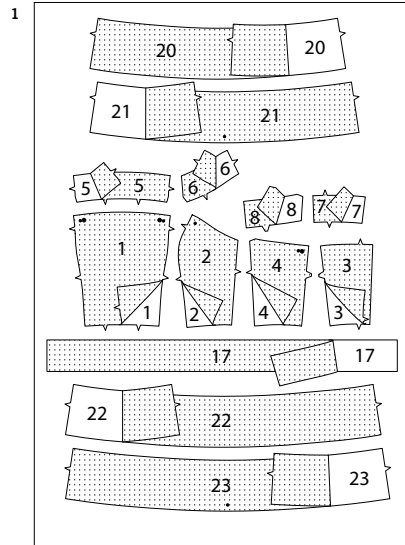
PATTERN PIECES WILL BE IDENTIFIED BY NUMBERS THE FIRST TIME THEY ARE USED.

STITCH 5/8" (1.5CM) SEAMS WITH RIGHT SIDES TOGETHER UNLESS OTHERWISE STATED.

DRESS A, B

INTERFACING

- Pin interfacing to wrong side of BODICE FRONT (1), BODICE SIDE FRONT (2), BODICE BACK (3), and BODICE SIDE BACK (4), FRONT FACING (5), SIDE FRONT FACING (6), BACK FACING (7), SIDE BACK FACING (8), BELT (17) and for *View A* FRONT AND BACK FACING (20), SIDE FACING (21), or for *View B* FRONT AND BACK FACING (22) and SIDE FACING (23). Fuse interfacing in place following manufacturer's directions.



BODICE

- With right sides together and raw edges even, pin BODICE FRONT (1) to BODICE SIDE FRONT (2), matching notches. Stitch. Press seam toward bodice front.

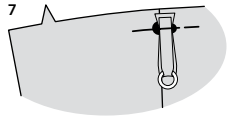
- With right sides together and raw edges even, pin BODICE BACK (3) to BODICE SIDE BACK (4), matching notches. Stitch.

- Stitch bodice front to bodice back at side edges.

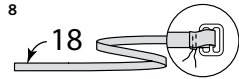
STRAP B

- Fold BACK STRAP (19) in half, lengthwise, with right sides together. Stitch in a 1/4" (6mm) seam. With a needle, attach a strong thread to one end of strap.

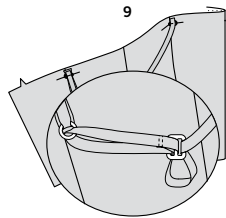
- Draw needle eye forward, through fold, turning strap right side out.



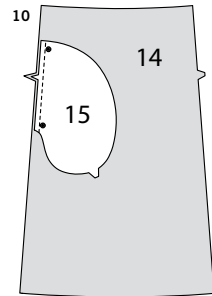
7. Slide ring over one end. Fold strap in half. On outside, pin ends to bodice side back, matching small and large dots. Baste.



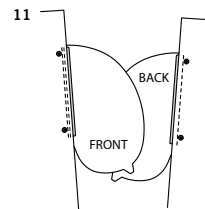
8. Make FRONT STRAP (18) in the same manner as back strap. Fold unmarked end of strap over center bar of slider 7/8" (2.2cm). Press under 1/4" (6mm). Stitch, using two rows of stitches.



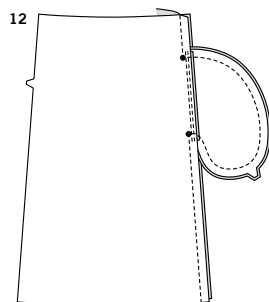
9. Thread end of strap through ring, and weave through outer bars of slider. On outside, pin end to bodice front, matching small and large dots; baste.



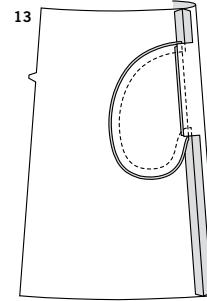
10. Pin POCKET (15) to side edges of SKIRT SIDE FRONT AND SIDE BACK (14) sections, with right sides together, matching large dots, and having raw edges even. Stitch in 3/8" (1cm) seam.



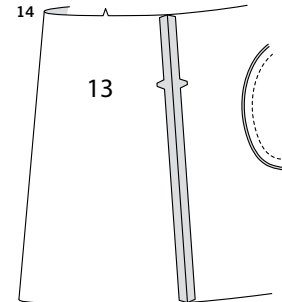
11. **UNDERSTITCH** side front pocket. Press seam toward pocket, pressing pocket out.



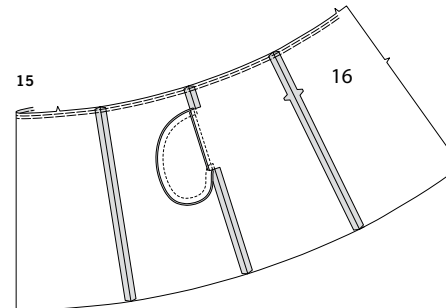
12. Pin side front to side back at side edges, matching large dots. In one continuous stitching, stitch side seams and pockets, squaring stitching at large dots.



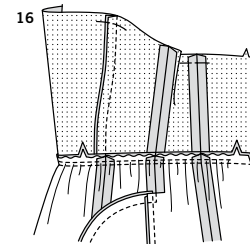
13. Clip skirt side back seam allowance at ends of pocket, as shown. Press seam open above and below clips. Press pocket toward side front.



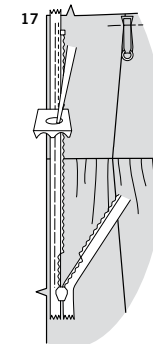
14. Stitch SKIRT FRONT (13) to skirt side front at side front edges.



15. Stitch SKIRT BACK (16) to skirt side back at side back edges. **GATHER** upper edge of skirt between the back notches, breaking stitching at seams.



16. With right sides together and raw edges even, pin skirt to bodice, matching centers, seams, and notches, pulling up gathering stitches to fit. Baste; stitch. Press seam toward bodice.

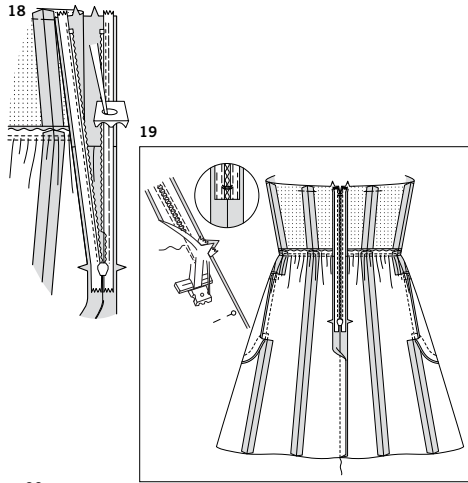


ZIPPER

NOTE: Stitch the invisible zipper using an invisible zipper foot.

NOTE: Measure the back opening from upper edge to the notch, minus 5/8" (1.5cm). If the zipper is longer than the opening, using a strong thread, hand-sew a few small stitches across ends of coils at end of opening. Trim away lower end of zipper tape to within 5/8" (1.5cm)

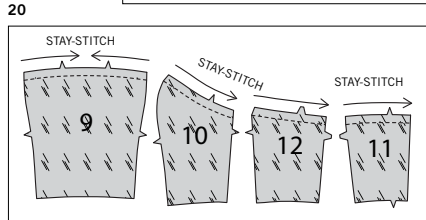
17. Open the zipper and press the tape flat on the wrong side unrolling the coils. Do not press the coils. On outside, pin right side of the zipper face down on the right side of the zipper opening. Have the coil along the seam line, the tape within the seam allowance and the top stop a generous 5/8" (1.5cm) below upper edge, as shown. Hand-baste along center of the tape. Position zipper foot at the top of the zipper with right groove of the foot over coil. Stitch along tape to the notch. Back-stitch to reinforce.



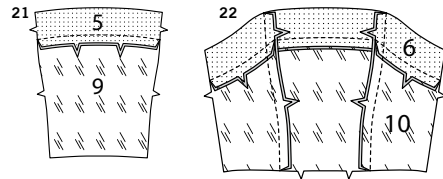
18. Pin the remaining half of the zipper to the left side of the zipper opening in same manner. Make sure the upper and lower edges of the dress are even. Hand-baste along the center of the tape. Position zipper foot at the top of the zipper with left groove over the coil. Stitch along tape to the notch. Back-stitch to reinforce.

19. Close zipper and check that it is invisible from the outside. Pull the free ends of the zipper tape away from the seam allowance. Pin remaining center back seam together below zipper. Position zipper foot all the way to the left so the needle goes down through the outer notch of the foot. Start stitching seam 1/4" (6mm) above lowest stitch and slightly to the left. Stitch seam for about 3" (7.5cm). Stitch remainder of seam using your regular presser foot. If you prefer, open out each seam allowance at end of zipper and stitch tape to seam allowance.

BODICE LINING

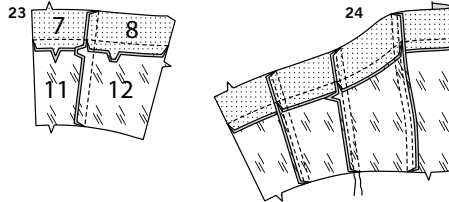


20. *STAY-STITCH* neck edge of BODICE FRONT LINING (9), BODICE SIDE FRONT LINING (10), BODICE BACK LINING (11), and BODICE SIDE BACK LINING (12) in direction of arrows.



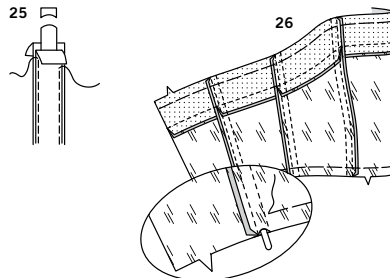
21. With right sides together and raw edges even, pin FRONT FACING (5) to BODICE FRONT LINING (9), matching notches. Stitch. Press seam toward lining.

22. Pin SIDE FRONT FACING (6) to BODICE SIDE FRONT LINING (10), matching notches. Stitch. Press seam toward lining. Stitch front lining to side front lining at side front edges. Press seam toward front.



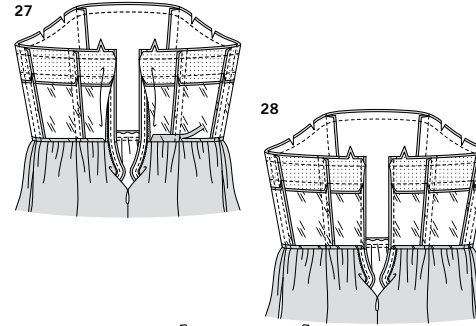
23. Pin BACK FACING (7) to BODICE BACK LINING (11), and SIDE BACK FACING (8) to BODICE SIDE BACK LINING (12) in the same manner. Stitch and press toward lining. Stitch back lining to side back lining at side back edges. Press seam toward back.

24. Stitch front lining to back lining at side edges. Press seams toward back. To form casings for boning, stitch seams 3/8" (1cm) from first stitching within the seam allowances, through all thicknesses.



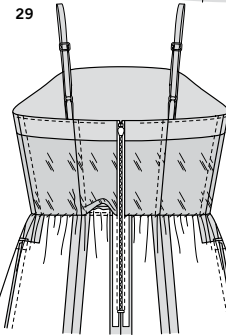
25. Cut a piece of boning the length of each casing, excluding upper and lower seam allowances. Remove boning from casing. Trim 1/4" (6mm) of boning from each end, curving ends, as shown.

26. Insert boning into casings. Baste 5/8" (1.5cm) from upper and lower edges of casing, being careful not to catch in boning.

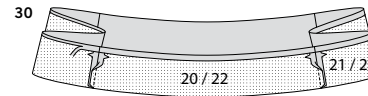


27. Press under 5/8" (1.5cm) on lower edge of lining. Trim to 1/4" (6mm). Open out center back opening edges of dress, rolling the zipper teeth away from the opening edge. With right sides together, pin lining to dress, matching centers and side seams. Stitch upper edge. Trim seam; clip curves.

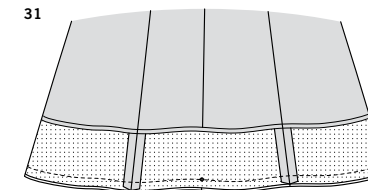
28. Pin back opening edges together. Using an adjustable zipper foot, stitch across lining 1/2" (1.3cm) from back edges, keeping zipper teeth free. Trim corners. Do not trim center back edges.



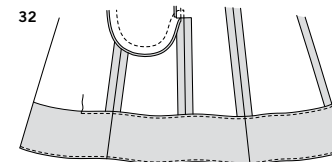
29. *UNDERSTITCH* the upper facing edge as far as possible. Turn lining and back edges to inside, rolling zipper teeth back in place; press. Pin pressed edge of lining over seam. Slip-stitch in place.



30. Stitch FRONT AND BACK FACING (20 or 22) to SIDE FACING (21 or 23) sections at ends. Press under 5/8" (1.5cm) on upper edge of band. Trim to 1/4" (6mm).

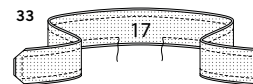


31. On outside, pin lower edge of band to lower edge of skirt, matching centers and small dots. Stitch. Trim seam; clip curves, as necessary.

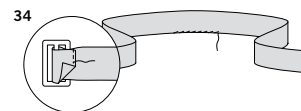


32. *UNDERSTITCH* the facing. Turn facing to inside; press. Stitch close to inner edge of facing.

BELT



33. With right sides together and raw edges even, stitch BELT (17) sections together, leaving an opening in one long edge for turning. Trim seam and corners.



34. Turn belt; press. Slip-stitch opening closed. Press under end along foldline. Wrap end of belt over center bar of buckle. Stitch in place close to finished edge.



Congrats!

You've completed your sewing adventure

**SHARE
YOUR** LOOK



Post your pattern and tag us
@simplicity_creative_group and **#simplicitypatterns**
for a chance to be featured on our social media.

Look for more PDF patterns at [simplicity.com](https://www.simplicity.com)

Have a question or need help with your sewing project call us at
1-888-588-2700



Simplicity ©2024 a division of IG Design Group Americas Inc. • Atlanta, GA 30342 USA www.thedesigngroup.com • All Rights Reserved. www.simplicity.com • Made in the U.S.A. Fabriqué aux États-Unis.

To be used for individual private home use only and not for commercial or manufacturing purposes. • A usage privé seulement et non à des fins commerciales ou de production en série. • Para uso privado solamente, no se puede utilizar con propósitos de comercialización o de producción en serie.