

S9916

**Simplicity**

1960s Vintage



easy-to-sew

Designed and printed in USA.

Easy

Facile

**MISSES' DRESS IN TWO LENGTHS**

**Suggested Fabrics:** Brocade, Cottons and Blends, Crepe, Linen, Peau de Soie, Piqué, Satin, Silk Prints, Silk Shantung, Silks, Synthetics and Blends, Velveteen, Voile. **Lining:** Lining Fabrics.

**Notions:** View 1 and 2: One 14" (36cm) zipper, bias seam binding (opt.)

<b>Sizes</b>	6	8	10	12	14	16	18	20	22	24
<b>European</b>	32	34	36	38	40	42	44	46	48	50

**BODY MEASUREMENTS: Select pattern size based on body measurements**

<b>Bust</b>	30½	31½	32½	34	36	38	40	42	44	46	Ins.
<b>Waist</b>	23	24	25	26½	28	30	32	34	37	39	"
<b>Hip-9" below waist</b>	32½	33½	34½	36	38	40	42	44	46	48	"
<b>Back-neck to waist</b>	15½	15¾	16	16¼	16½	16¾	17	17¼	17½	17¾	"

**View 1 Dress**

45**	3¼	3¼	3¼	3¼	3¾	3¾	3¾	3¾	4¼	4¼	Yds.
60**	2¾	2¾	2¾	2¾	2¾	2¾	2¾	2¾	3¼	3¼	"
<b>Lining</b>	45***	2¾	2¾	2¾	3	3¾	3¾	3¾	3¾	3¾	"

**View 2 Dress**

45**	2¾	2¾	2¾	2¾	2¾	2¾	2¾	2¾	2¾	2¾	Yds.
60**	1¾	1¾	1¾	1¾	2	2	2	2	2¼	2¼	"
<b>Lining</b>	45***	1¾	1¾	1¾	2¼	2¼	2¼	2¼	2¼	2¼	"

**FINISHED GARMENT MEASUREMENTS (Includes Design and Wearing Ease)**

<b>View 1,2 Bust</b>	33	34	35	36½	38½	40½	42½	44½	46½	48½	Ins.
<b>View 1,2 Waist</b>	25	26	27	28½	30½	32½	34½	36½	38½	40½	"
<b>View 1,2 Hip</b>	35	36	37	38½	40½	42½	44½	46½	48½	50½	"
<b>Width, lower edge</b>											
<b>View 1 Dress</b>	40½	41½	42½	44	46	48	50	52	54	56	Ins.
<b>View 2 Dress</b>	38	39	40	41½	43½	45½	47½	49½	51½	53½	"
<b>Finished back length from base of neck</b>											
<b>View 1 Dress</b>	56	56¼	56½	56¾	57	57¼	57½	57¾	58	58¼	Ins.
<b>View 2 Dress</b>	40	40¼	40½	40¾	41	41¼	41½	41¾	42	42¼	"

\*with nap \*\*without nap

**ROBE EN DEUX LONGUEURS POUR JEUNES FEMMES**

**Tissus Conseillés:** Brocart, Cotons et cotonnades, Crêpe, Toile de lin, Peau de Soie, Piqué, Satin, Imprimés de soie, Shantung de soie, Soies, Mélanges de fibres synthétiques, Velours de coton, Voile. **Doubleure:** Tissus à doubleure.

**Mercerie:** Modèles 1 et 2: 1 fermeture à glissière de 36cm, extra-fort en biais (facultatif).

<b>Tailles</b>	6	8	10	12	14	16	18	20	22	24
<b>Françaises</b>	34	36	38	40	42	44	46	48	50	52
<b>Européen</b>	32	34	36	38	40	42	44	46	48	50

**MESURES DU CORPS: Choisissez la taille du patron basée sur les mesures du corps**

<b>Poitrine</b>	78	80	83	87	92	97	102	107	112	117	cm
<b>Taille</b>	58	61	64	67	71	76	81	87	94	99	"
<b>Hanches (23cm au-dessous de la taille)</b>	83	85	88	92	97	102	107	112	117	122	cm
<b>Dos du cou à la taille</b>	39.5	40	40.5	41.5	42	42.5	43	44	44.5	45	"

**Modèle 1 Robe**

115cm*	3.0	3.0	3.0	3.0	3.0	3.1	3.1	3.3	3.8	3.9	m
150cm*	2.2	2.2	2.2	2.2	2.3	2.3	2.4	2.4	3.0	3.0	"
<b>Doubleure</b>	115cm**	1.9	1.9	1.9	2.7	2.7	2.9	3.0	3.0	3.1	"

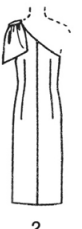
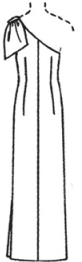
**Modèle 2 Robe**

115cm*	2.2	2.2	2.3	2.3	2.3	2.3	2.3	2.4	2.4	2.4	m
150cm*	1.6	1.7	1.7	1.7	1.7	1.8	1.8	1.8	2.1	2.1	"
<b>Doubleure</b>	115cm**	1.3	1.5	2.1	2.1	2.1	2.1	2.2	2.2	2.2	"

**MESURES DES VÊTEMENTS FINI (Motif et aisance de port compris)**

<b>Modèle 1,2 Poitrine</b>	84	86	89	93	98	103	108	113	118	123	cm
<b>Modèle 1,2 Taille</b>	64	66	69	72	77	83	88	93---	98	103	"
<b>Modèle 1,2 Hanches</b>	89	91	94	98	103	108	113	118	123	128	"
<b>Largeur à l'ourlet</b>											
<b>Modèle 1 Robe</b>	103	105	108	112	117	122	127	132	137	142	cm
<b>Modèle 2 Robe</b>	97	99	102	105	110	116	121	126	131	136	"
<b>Longueur finie - dos, votre nuque à l'ourlet</b>											
<b>Modèle 1 Robe</b>	142	143	144	144	145	145	146	147	147	148	cm
<b>Modèle 2 Robe</b>	102	102	103	104	104	105	105	106	107	107	"

\*avec sens \*\*sans sens



# AUTHENTIC VINTAGE PATTERN REPRODUCTION

INCLUDES ADDITIONAL SIZE OPTIONS AND CUTTING LAYOUTS

## HOW TO USE YOUR SIMPLICITY PATTERN

1. **SELECT THE PATTERN PIECES** for the view you are making. These pieces are listed in the box to the right.

2. **PRESS THE PATTERN PIECES.**

3. **COMPARE YOUR BODY MEASUREMENTS** with those on back of the envelope.

4. **IF ALTERATIONS ARE NECESSARY,** they should be made in the pattern before placing on fabric. **[Caution:** In addition to body measurements, ease is allowed in the pattern for garment style and comfortable wearing.] Pattern pieces show where to make simple alterations such as:

**To Shorten**  
Create on printed line. Pin a pleat as deep as half the amount to be shortened. (i.e.,  $\frac{1}{2}$ " deep to shorten  $\frac{1}{2}$ ".)

**To Lengthen**  
Cut pattern on printed line. Place paper underneath. Spread pattern the necessary amount and pin to paper.

**For Children's Wear,** alter at lower edge except in shorts and slacks, etc., when crotch needs alterations, in which case alter above the crotch.

See the **Simplicity Sewing Book** for other alterations.

5. **PREPARE FABRIC.** Press creases out of fabric. Unfold fabric & pre-shrink, sponge or shrink before cutting.

**To Straighten End.** Snip selvage and pull

8. **CROSSWISE THREAD.** Cut on this line. Some fabrics may be strengthened by tearing.

**To Straighten Threads.** If crosswise threads of fabric are not at perfect right angles to the selvage, pull the fabric on the bias in the opposite direction until crosswise threads are straight and squared with the selvage.

6. **CUTTING PREPARATION.**

a. **Circle in pencil** the cutting layout for the view, size and fabric width you are planning to use.

b. If pattern is to be cut on **double thickness** of fabric, fold fabric with right side inside and place pattern on wrong side. For **single thickness**, place pattern on right side of fabric.

c. **Guides for using your pattern:**  
← This grain line arrow indicates straight grain of fabric. Place pattern with end of arrows an even distance from selvage or a straight thread.  
→ These fold lines indicate fold of fabric. Turn margin under on printed line before placing on fold of fabric.  
◆ Notches mark seams to be joined.

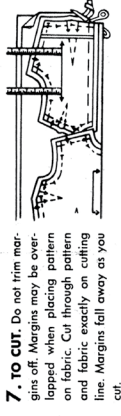
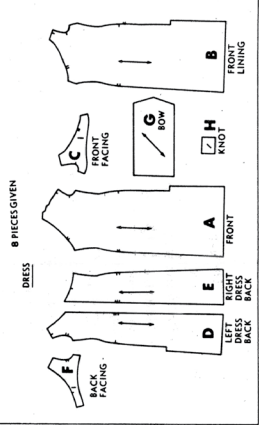
d. Follow your cutting layout when placing pattern pieces on fabric. Pattern may be placed on fabric with printed side up or against fabric, as shown in layout.

e. When duplicate pieces are cut one at a time, **reverse the pattern for the second piece.** On cutting layouts, **duplicate pieces are shown by broken lines.** When a pattern piece extends beyond fold of fabric, cut out all other pattern pieces, then open fabric and cut that pattern piece.

## LIST OF PIECES

SELECT YOUR PATTERN PIECES, SEE CUTTING LAYOUTS AND NOTES

VIEW 1 AND 2 - A,B,C,D,E,F,G,H



## SEWING DIRECTIONS

1. **READ INSTRUCTIONS** printed on each pattern piece as you work.

2. **WORK IN UNITS** according to the sewing directions.

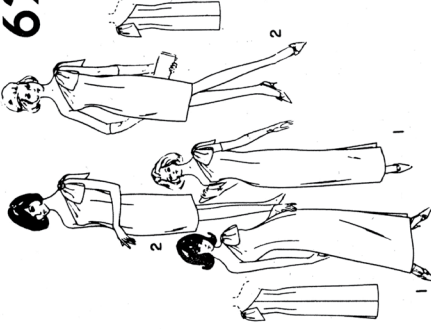
3. **STAY-STITCHING** is a line of regular machine-stitching (in one thickness of fabric) on, or close to the seam line within the seam allowance. It prevents stretching.

Stay-stitching will be shown **only the first time** a section of garment is illustrated in the instructions.

# Simplicity PRIMER

Guide for Cutting - Sewing - Detailed Dressmaking

# 6263



4. **SEAM ALLOWANCE** is  $\frac{1}{4}$ " unless otherwise stated.

5. **TO JOIN SEAMS,** match notches with same numbers, 1 to 1, 2 to 2, etc.

6. **STITCHING DIRECTIONS** are shown by arrows on printed seam lines. Press each seam before it is joined to another. Press in same direction as it was stitched. Note: We suggest machine-basting, using longest machine stitch.

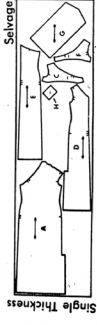
Note: Press seams open unless otherwise stated.

**THE SIMPLICITY SEWING BOOK** featuring the **Simplicity Unit System of Sewing is now on sale.**

GENERAL NOTE: BE SURE TO CUT ALL PATTERN PIECES RIGHT SIDE UP.

## View 1 DRESS

35" 36" Fabric With Nap  
Sizes 10, 12



35" 36" Fabric With Nap  
Sizes 14, 16, 18



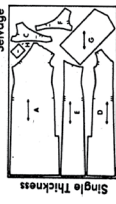
35" 36" Fabric Without Nap  
Sizes 10, 12



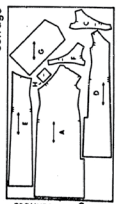
35" 36" Fabric Without Nap  
Sizes 14, 16, 18



50" Fabric With Or  
Without Nap  
Sizes 10, 12



50" Fabric With Nap  
Size 14

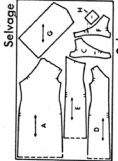


## View 2 DRESS

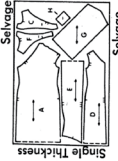
50" Fabric With Or  
Without Nap  
Sizes 10, 12, 14



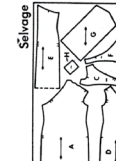
50" Fabric With  
Nap  
Sizes 16, 18  
44" 45" Fabric  
With Nap  
Sizes 10, 12



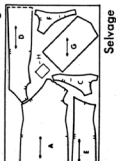
50" Fabric  
Without Nap  
Sizes 16, 18  
44" 45" Fabric  
Without Nap  
Sizes 10, 12



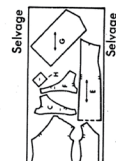
44" 45" Fabric  
With Nap  
Sizes 14,  
16, 18  
44" 45" Fabric  
Without Nap  
Sizes 14, 16



44" 45" Fabric  
Without Nap  
Size 18



35" 36" Fabric With Or Without Nap  
Sizes 10, 12, 14



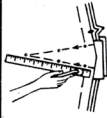
## Cutting Layouts

8. **MARK FABRIC.** Construction details must be marked on the fabric. Mark center front and back with a clip at top and bottom. **Tailor's Tacks.** Use long double thread without knot. Take 2 small

stitches thru pattern and both fabric layers, leaving long loop. Cut top loops and remove pattern. Separate fabric, clip threads between fabric layers, leaving thread tails on both layers.



**TRACING WHEEL AND DRESS-MAKING'S TRACING PAPER.** Markings should be made on wrong side of fabric. Use ruler to guide straight lines; mark curves freehand.



**For doubled fabric:** lay one piece of tracing paper face up under fabric; a second piece, face down directly under pattern. Do not remove all pins.

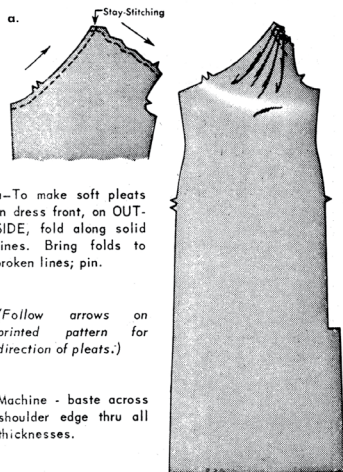
**For single thickness:** lay one piece of tracing paper face up under the wrong side of fabric. **Do not remove pattern until ready to work on each piece.**

6263

SHADED AREA IS RIGHT SIDE OF FABRIC

DRESS VIEW 1

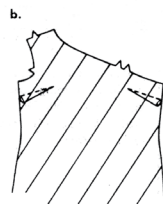
UNIT 1 - FRONT AND FRONT LINING



a-To make soft pleats in dress front, on OUTSIDE, fold along solid lines. Bring folds to broken lines; pin.

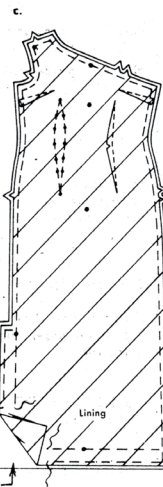
(Follow arrows on printed pattern for direction of pleats.)

Machine-baste across shoulder edge thru all thicknesses.



b-To make underarm darts in front lining, on INSIDE, fold along solid line.

Stitch along broken lines. Press down.



c-Pin RIGHT side of lining to WRONG side of front, matching centers, waistline dart lines and small and medium dots ●, having raw edges even, as shown.

Ease neck edge of lining to fit.

Baste along dart lines and 1/2" from all raw edges.

Machine-stitch 2" above lower edge and 2" from side extension. (This stitching will be on INSIDE when dress is finished.)

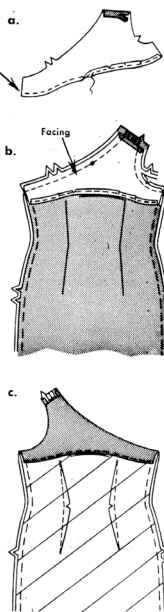
Make waistline darts thru all thicknesses; clip at waistline and press toward center.

UNIT 2 - FRONT FACING

a-Stitch 1/4" from long unnotched edge of facing. Press under edge along stitching and stitch. Press under 5/8" on shoulder edge; trim to 1/4".

b-With RIGHT sides together, pin facing to front, matching centers, having raw edges even. Stitch neck and armhole edges, as shown. Trim seams; clip curves.

c-Press facing to INSIDE.



UNIT 3 - LEFT BACK, RIGHT BACK AND LINING

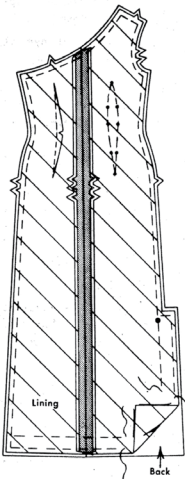
Pin RIGHT side of lining to WRONG side of back sections, matching centers, dart lines, small and medium dots ●, having raw edges even.

Baste along dart lines and 1/2" from raw edges.

Machine-stitch 2" above lower edge and 2" from side extension. (This stitching will be on underside when dress is finished.)

Make darts thru all thicknesses; clip at waistline and press toward center.

Join center back seam.



UNIT 4 - BACK FACING

a-Stitch 1/4" from long unnotched edge of facing. Press under edge along stitching and stitch. Press under 5/8" on shoulder edge; trim to 1/4".



b-With RIGHT sides together, pin facing to back, matching centers, having raw edges even.

Stitch neck and armhole edges. Trim seams; clip curves.

c-Press facing to INSIDE.

SHOULDER AND SIDE SEAMS

a-Join front to back at shoulder seam, being careful not to catch in facing.

b-Trim seam; press open. Slip seam under facing. Slip-stitch shoulder edges of facing together.

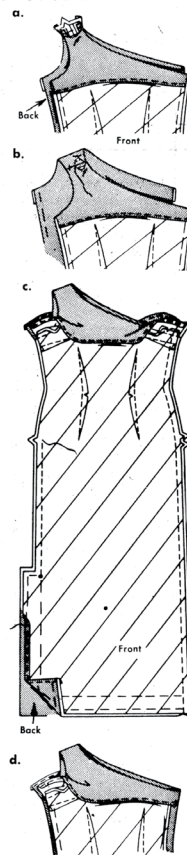
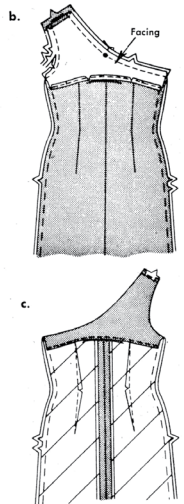
c-Open out facings at underarms.

Join entire RIGHT side seam.

Join LEFT side seam between medium dot ● and notch, as shown.

Stitch under 1/4" on side extensions, as shown.

d-Press facing to INSIDE; tack to RIGHT side seam, as shown.



ZIPPER

a-Machine-baste LEFT side opening edges together, along seam line. Press open.

On INSIDE, turn under LEFT back seam allowance 1/8" from seam line.

With zipper face up and tab end 1/2" below armhole seam, pin turned edge to zipper tape.

Trim tape below armhole seam. Baste. Stitch, using a zipper foot.

b-On INSIDE, with zipper face down over seam, pin tape to LEFT front thru all thicknesses. Using a zipper foot, stitch across lower end and up to armhole seam. Press.

Remove machine-basting.

c-Turn facing to INSIDE, turning under edges diagonally; slip-stitch to zipper tape. Sew hook and eye at upper end of zipper.

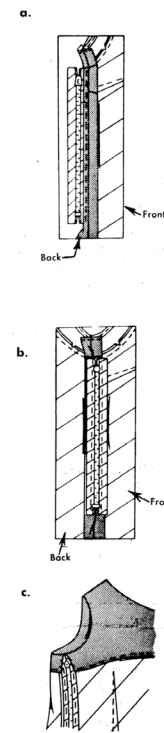
HEM AND SLIT OPENING

Mark length. Press up hem. Mark depth of hem; trim evenly.

Stitch one edge of bias seam binding 1/4" over raw edge (or stitch under 1/4" on raw edge).

Slip-stitch hem.

Press side extensions to INSIDE along fold line, forming facing. Slip-stitch facing.

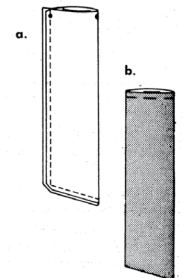


UNIT 5 - BOW

a-Fold bow in half, lengthwise, RIGHT sides together.

Stitch in 3/8" seam, leaving end with small and medium dots ● open. Trim seam and corners.

b-Turn bow; press. Baste raw edges together.



c-Fold raw end of bow to underside, matching small and medium dots ●, forming loop, as shown.

Gather along gathering line between small and medium dots ● by hand.

d-On OUTSIDE, pin bow to dress at shoulder, matching small dot ● at neck edge and medium dot ● at armhole. Adjust gathers to fit.

Hand-sew to dress over gathers, between small and medium dots ●.

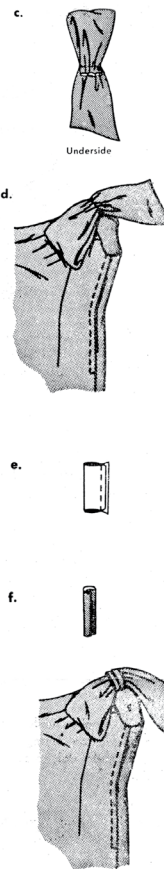
e-Fold knot in half, lengthwise RIGHT sides together. Stitch in 3/8" seam.

Trim seam.

f-Turn knot; press.

Pleat knot so that it measures 1".

Place knot over gathers of bow, turning under ends on INSIDE of dress. Adjust to fit; sew ends together.



DRESS VIEW 2

Make Dress same as for VIEW 1, see Unit 1 thru ZIPPER in Unit 4, omitting reference to side extension.

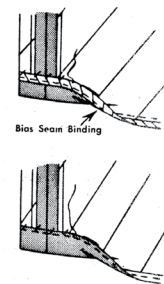
When joining side seams, stitch entire LEFT side seam to notch.

HEM

Mark length. Press up hem along marking. Mark depth of hem; trim evenly.

Stitch one edge of bias seam binding 1/4" over raw edge (or stitch under 1/4" on raw edge). Slip-stitch hem.

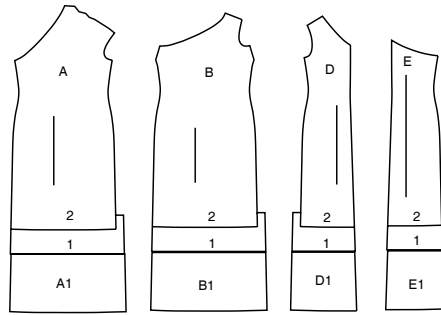
For BOW, see VIEW 1, Unit 5.



# Simplicity®

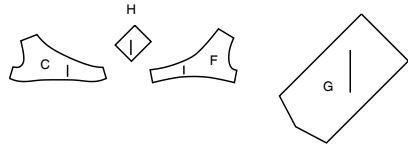
Thank you for purchasing this Simplicity pattern. We made every effort to provide you with a high quality product.

## SUPPLEMENTAL CUTTING LAYOUTS



8 PIECES

- A (A1) DRESS FRONT
- B (B1) FRONT LINING
- C FRONT FACING
- D (D1) LEFT DRESS BACK
- E (E1) RIGHT DRESS BACK
- F BACK FACING
- G BOW
- H KNOT



## General Directions

### The Pattern

**SYMBOLS**

- GRAIN LINE Place on straight grain of fabric parallel to selvage
- PLACE SOLID LINE on fold of fabric.
- CENTER FRONT OR BACK of garment.
- NOTCHES
- DOTS
- CUTTING LINE
- LENGTHEN OR SHORTEN LINES

**ADJUST IF NEEDED**

Make adjustments before placing pattern on fabric.

**TO LENGTHEN:** Cut pattern between lengthen or shorten lines. Spread pattern evenly, the amount needed and tape to paper.

**TO SHORTEN:** At lengthen or shorten lines, make an even pleat taking up amount needed. Tape in place.

When lengthen or shorten lines are not given, make adjustments at lower edge of pattern.

**SEAM ALLOWANCE:** 5/8" (1.5cm) unless otherwise stated is included but not printed on MULTI-SIZE PATTERNS. Mark your size with colored felt tip pen. See chart on tissue for how to use MULTI-SIZE PATTERNS.

**Sewing**

- SEW garment following **Sewing Directions**.
- PIN or machine-baste seams matching notches.
- STITCH 5/8" (1.5 cm) seams unless otherwise stated.
- PRESS seams open unless otherwise indicated clipping when necessary so seams will lie flat.
- TRIM seams to reduce bulk, as shown below.

Trim enclosed seams into layers    Trim corners    Clip inner curves    Notch outer curves

### Cutting/Marking

**BEFORE CUTTING:**

PRESS pattern pieces with a warm dry iron. PRE-SHRINK fabric by pre-washing washables or steam-pressing non-washables.

CIRCLE your cutting layout.

PIN pattern to fabric as shown in Cutting Layouts.

- FOR DOUBLE THICKNESS: Fold fabric with RIGHT sides together.
- FOR SINGLE THICKNESS: Place fabric RIGHT side up.
- FOR PILE, SHADED OR ONE WAY DESIGN FABRICS: Use "with nap" layouts

**AFTER CUTTING:**

Transfer markings to WRONG side of fabric before removing pattern. Use pin and chalk method or dressmaker's tracing paper and wheel.

**To Quick Mark:**

- Snip edge of fabric to mark notches, ends of fold lines and center lines.
- Pin mark dots.

**SPECIAL CUTTING NOTES**

- ★ If layout shows a piece extending past fold, cut out all pieces except piece that extends.
- ✱ Mark small arrows along both selvages indicating direction of nap or design. Fold fabric crosswise with RIGHT sides together, and cut along fold (a).

Open out fabric to single thickness. Cut extending piece on RIGHT side of fabric in position shown.

a. CROSSWISE FOLD    b. SELVAGES

Turn one fabric layer around so arrows on both layers go in the same direction. Place RIGHT sides together (b).

## Cutting Layouts

WRONG SIDE OF FABRIC    RIGHT SIDE OF FABRIC    PATTERN PIECE WITH PRINTED SIDE UP    PATTERN PIECE WITH PRINTED SIDE DOWN    ★ SEE SPECIAL CUTTING NOTES

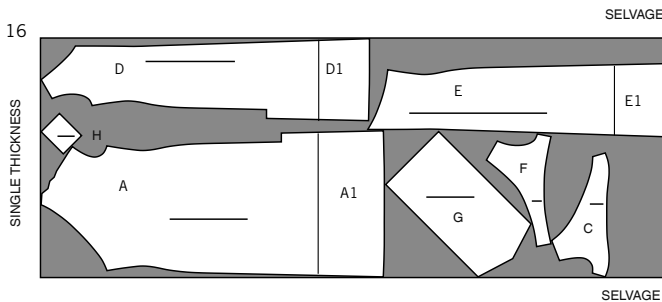
POSITION OF PATTERN PIECES MAY VARY SLIGHTLY ACCORDING TO YOUR PATTERN SIZE

NOTE: BEFORE CUTTING FABRIC JOIN PIECE IN PARENTHESIS TO CORRESPONDING PIECES FOLLOWING INSTRUCTIONS ON TISSUE PATTERN

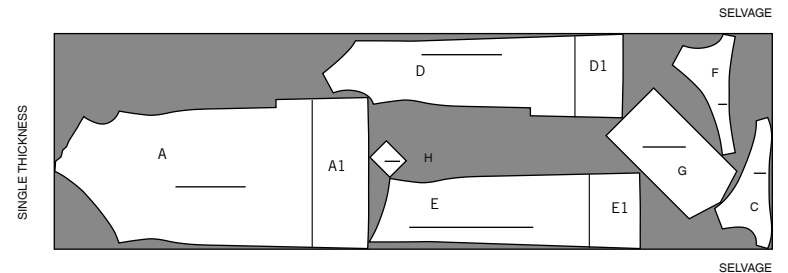
### VIEW 1 DRESS

USE PIECES A (A1) C D (D1) E (E1) F G H

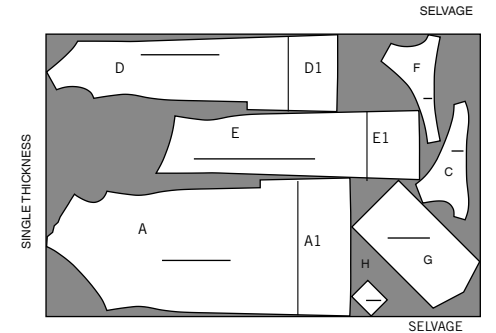
45" (115CM) WITH NAP SIZES 6 8 10 12 14 16



45" (115CM) WITH NAP SIZES 18 20 22 24



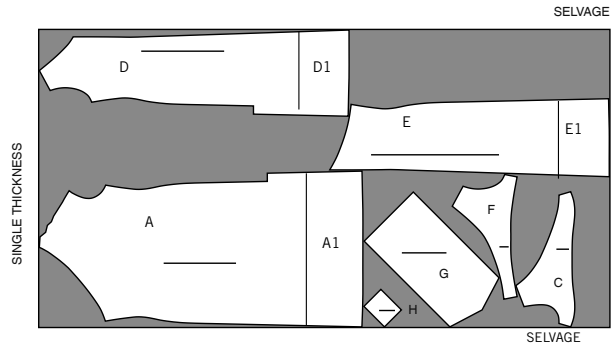
60" (150CM) WITH NAP SIZES 6 8 10 12 14 16 18 20



CUTTING LAYOUTS CONTINUED ON PAGE 2

# S9916

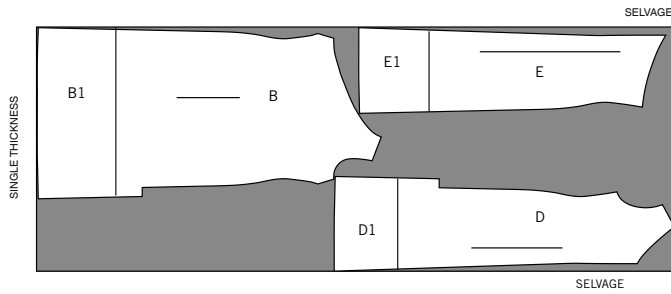
60" (150CM)  
WITH NAP  
SIZES 22 24



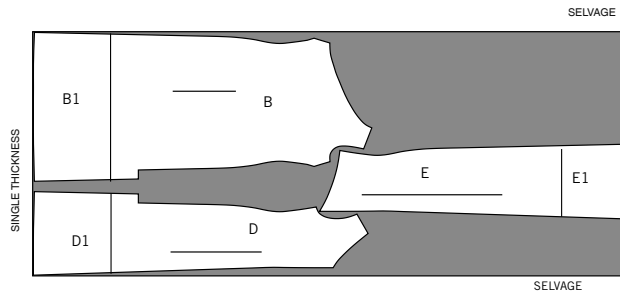
## LINING

USE PIECES B (B1) D (D1) E (E1)

45" (115CM)  
WITHOUT NAP  
SIZES 6 8 10 12 14 16



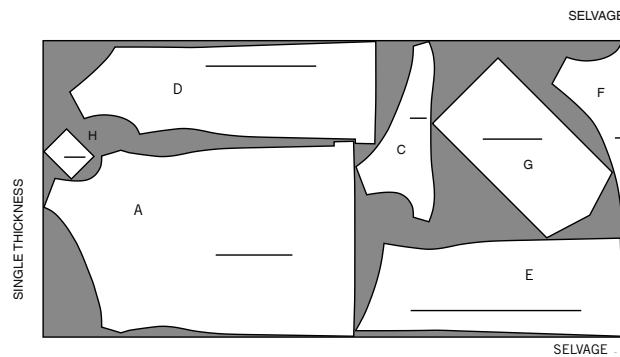
45" (115CM)  
WITHOUT NAP  
SIZES 18 20 22 24



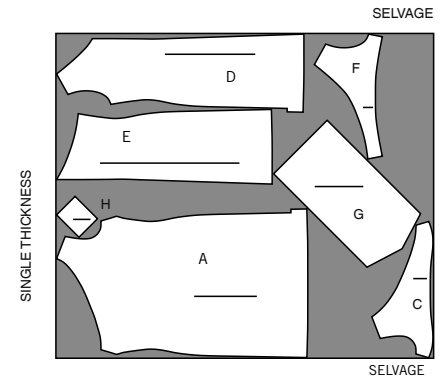
## VIEW 2 DRESS

USE PIECES A C D E F G H

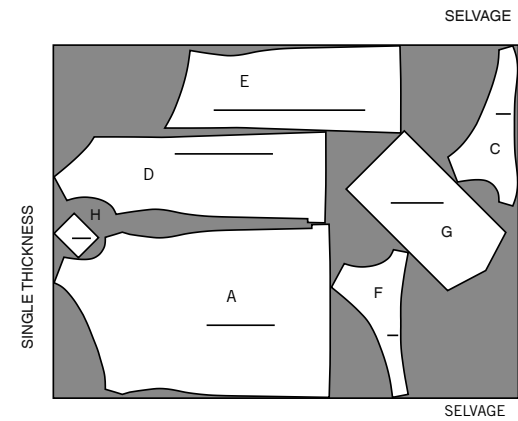
45" (115CM)  
WITH NAP  
ALL SIZES



60" (150CM)  
WITH NAP  
SIZES 6 8 10 12 14 16 18 20



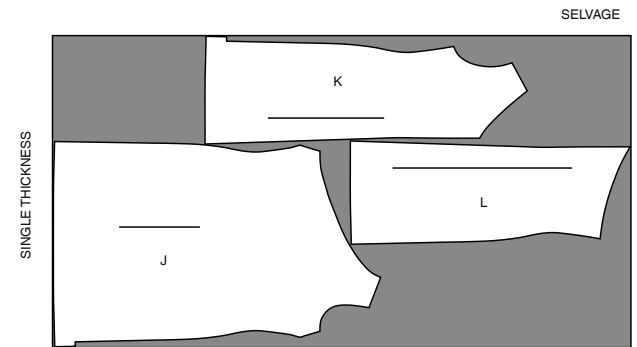
60" (150CM)  
WITH NAP  
SIZES 22 24



## LINING 2

USE PIECES B D E

45" (115CM)  
WITHOUT NAP  
ALL SIZES





# Congrats!

You've completed your sewing adventure

---

**SHARE  
YOUR** LOOK



Post your pattern and tag us  
**@simplicity\_creative\_group** and **#simplicitypatterns**  
for a chance to be featured on our social media.

Look for more PDF patterns at [simplicity.com](https://www.simplicity.com)

Have a question or need help with your sewing project call us at  
1-888-588-2700



Simplicity ©2024 a division of IG Design Group Americas Inc. • Atlanta, GA 30342 USA [www.thedesigngroup.com](https://www.thedesigngroup.com) • All Rights Reserved. [www.simplicity.com](https://www.simplicity.com) • Made in the U.S.A. Fabriqué aux États-Unis.

To be used for individual private home use only and not for commercial or manufacturing purposes. • A usage privé seulement et non à des fins commerciales ou de production en série. • Para uso privado solamente, no se puede utilizar con propósitos de comercialización o de producción en serie.