

S9914

Simplicity®

1960s Vintage



easy-to-sew



Designed and printed in USA.

Easy

## MISSES' BEACH COVER-UP AND ROBE

**Suggested Fabrics:** Canvas, Cotton Sateen, Cottons and Blends, Dotted Swiss, Duck, Eyelet, Homespun, Linen, Pique, Poplin, Printed Voile, Synthetics and Blends, Terrycloth.

**Notions:** Bias seam binding (opt.), one pkg. of bias fold tape, ¾ yd. (0.7m) of ¼" (6mm) elastic. **Also for View 1,2,3:** Five ¾" (2cm) buttons, 2¼ yds. (2.0m) of jumbo rick rack (opt.). **Also for View 4,5,6:** Two ¾" (2cm) buttons, 2¼ yds. (1.9m) of 1" (2.5cm) pre-gathered embroidered eyelet edging (opt.).

Sizes	S	M	L
	8-10	12-14	16-18
European	34-36	38-40	42-44

## BODY MEASUREMENTS: Select pattern size based on body measurements

Bust	31½-32½	34-36	38-40	Ins.
Waist	24-25	26½-28	30-32	"
Hip-9" below waist	33½-34½	36-38	40-42	"
Back-neck to waist	15¾-16	16¼-16½	16¾-17	"

## View 1,2,3 Beach Cover-up or Robe (with or without pockets)

45**	3%	3%	3½	Yds.
60**	2%	3	3	"

## View 4,5,6 Beach Cover-up or Robe (with or without pockets)

45**	3%	3½	3%	Yds.
60**	2%	2%	2%	"

**NOTE:** Please refer to the sewing instructions for **FINISHED GARMENT MEASUREMENTS**.

\*with nap \*\*without nap

Facile

## COUVRE-MAILLOT ET SORTIE DE BAIN POUR JEUNES FEMMES

**Tissus Conseillés:** Toile, Satin de coton, Cotons et cotonnades, Plumetis, Coutil, Broderie anglaise, Tissu homespun, Toile de lin, Piqué, Popeline, Voile imprimée, Mélanges de fibres synthétiques, Tissu éponge.

**Mercerie:** extra-fort en biais (facultatif), 1 paquet de ruban de biais, 0.7m d'élastique de 6mm. **Aussi pour les modèles 1,2,3 :** 5 boutons de 2cm, 2.0m de croquet très large (facultatif). **Aussi pour les modèles 4,5,6 :** 2 boutons de 2cm, 1.9m de bordure de broderie pré-froignée de 2.5cm (facultatif).

Tailles	P/S	M/M	G/L
Françaises	38-40	42-44	46-48
Européen	36-38	40-42	44-46

## MESURES DU CORPS: Choisissez la taille du patron basée sur les mesures du corps

Poitrine	80-83	87-92	97-102	cm
Taille	61-64	67-71	76-81	"
Hanches (23cm au-dessous de la taille)	85-88	92-97	102-107	cm
Dos du cou à la taille	40-40.5	41.5-42	42.5-43	"

## Modèle 1,2,3 Couvre-maillot ou sortie de bain (avec ou sans poches)

115cm*	3.0	3.1	3.2	m
150cm*	2.4	2.7	2.7	"

## Modèle 4,5,6 Couvre-maillot ou sortie de bain (avec ou sans poches)

115cm*	3.1	3.2	3.3	m
150cm*	2.4	2.5	2.6	"

**NOTE:** S'il vous plaît, reportez-vous aux instructions de couture pour les **MESURES DU VÊTEMENTS FINI**.

\*avec sens \*\*sans sens



1

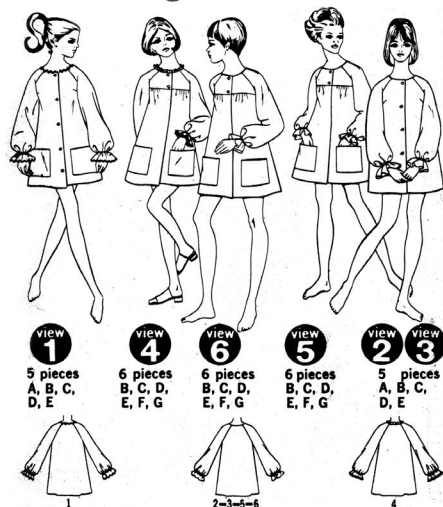


4

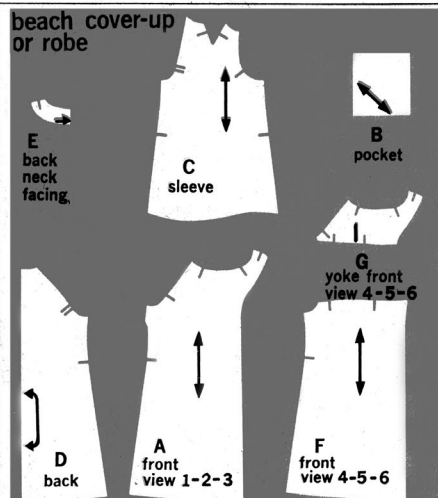


2,3,5,6

# Simplicity 8276 cutting and sewing directions



## select your pattern pieces according to the view you have chosen 7 pieces given



### 1. Prepare your pattern

Select the pattern pieces for the view you plan to make from the box to the left. Do not cut away margins.

This pattern is made to body measurements with ease allowed for style, fit and comfort. Check your back waist and dress length. If necessary, alter the pattern before placing it on fabric. Lengthening and shortening lines are indicated on pattern.

**TO LENGTHEN:** Cut pattern between printed lines. Place paper underneath. Spread pattern the necessary amount and pin to paper.

**TO SHORTEN:** At the printed line, pin a pleat half the amount to be shortened. (i.e. 1/2" deep to shorten 1".)

See Simplicity Sewing Book for other pattern alterations.

### 2. Prepare your fabric

Press fabric. Unless fabric is pre-shrunk, shrink before cutting.

**STRAIGHTEN ENDS:** Clip one selvage and tear fabric or pull a crosswise thread and cut across fabric.

**STRAIGHTEN UNEVEN GRAIN:** Pull fabric on the bias in opposite direction until crosswise threads are straight and squared with selvages. This cannot be done on permanent finish fabrics.

Read all directions carefully before beginning to work

### 3. Know your pattern markings

**STRAIGHT GRAIN:** Place an even distance from selvage or a straight thread.

**FOLD GRAIN:** Place on fold of fabric.

**CUTTING LINE:**

**LENGTHENING AND SHORTENING LINES:**

**STITCHING LINES:** For darts, seams, etc.

**SEAM ALLOWANCE:** 5/8" unless otherwise stated.

**NOTCHES:** Blocked in for easier cutting; match notches with same numbers.

### 4. Laying out and cutting your pattern

Circle cutting layout for View, Size and Fabric width.

**FOR DOUBLE THICKNESS:** Fold fabric with RIGHT side INSIDE and place pattern on WRONG side of fabric.

**FOR SINGLE THICKNESS:** Place pattern on RIGHT side of fabric.

**FOR NAP OR ONE WAY DESIGN FABRICS:** Use "with nap" cutting layout.

Before cutting, place all pattern pieces on fabric, following cutting layouts. Margins may be overlapped when placing pattern on fabric. When duplicate pattern pieces are cut separately, the second piece is reversed and shown as a white outline.

Cut thru pattern and fabric on cutting lines; cut notches out from cutting lines. Margins will fall away as you cut.

### 5. Mark your fabric

Before removing pattern, transfer markings to WRONG side of fabric with tracing wheel and dressmaker's tracing paper.

**FOR SINGLE THICKNESS:** Place one sheet of tracing paper face up under WRONG side of fabric.

**FOR DOUBLE THICKNESS:** Place one sheet of tracing paper face up under fabric; place another sheet face down under pattern.

See Simplicity Sewing Book for "chalk-marking" and Tailor's-tacks.

Do not remove pattern from fabric until you are ready to sew.

### 6. Sewing your garment

**READ DIRECTIONS** on pattern pieces as you work.

**STAY-STITCH:** Machine-stitch thru single thickness of fabric to prevent stretching of bias or curved edges—done on seam line or 1/8" from seam line within seam allowance. Stay-stitching is shown only the first time a section of garment is illustrated.

**PIN or BASTE SEAMS:** Match notch 1 to 1, 2 to 2, etc. (Baste by hand or machine using a long stitch.)

**PRESS SEAMS:** Open, unless otherwise stated. See Simplicity Sewing Book for additional sewing details.

## NEW Sizing

**BEFORE YOU CUT**—be sure to compare your body measurements with **THE NEW MEASUREMENT CHART** on the back of the pattern envelope. You may wish to make minor fitting adjustments.

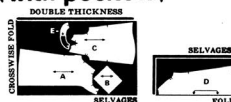
## cutting layouts

Black area represents fabric

### view 1 2 3 beach cover-up or robe (with pockets)

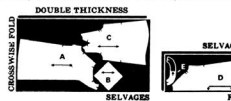
35" 36" fabric without nap

size small  
NOTE: Cut one E.



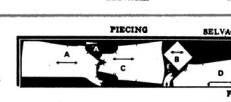
35" 36" fabric without nap

size medium, large  
NOTE: Cut one E.



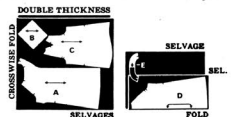
44" 45" fabric without nap

size small  
NOTE: Piece A as shown, allowing for seam.



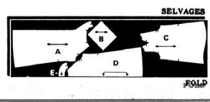
44" 45" fabric without nap

size medium, large.



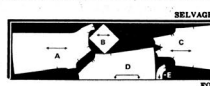
54" fabric without nap

size small



54" fabric without nap

size medium, large



### view 1 2 3 beach cover-up or robe (without pockets)

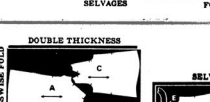
35" 36" fabric without nap

size small  
NOTE: Cut one E.



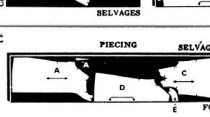
35" 36" fabric without nap

size medium, large  
NOTE: Cut one E.



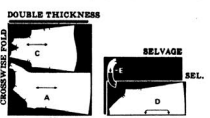
44" 45" fabric without nap

size small  
NOTE: Piece A as shown, allowing for seam.



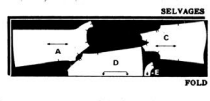
44" 45" fabric without nap

size medium, large



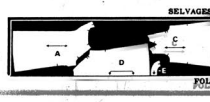
54" fabric without nap

size small



54" fabric without nap

size medium, large



### view 4 5 6 beach cover-up or robe (with pockets)

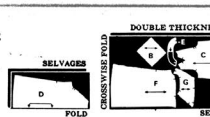
35" 36" fabric without nap

size small  
NOTE: Cut one E.



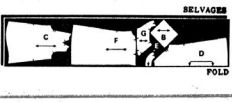
35" 36" fabric without nap

size medium, large  
NOTE: Cut one E.



44" 45" fabric without nap

size small, medium



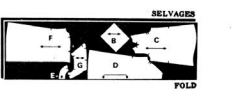
44" 45" fabric without nap

size large



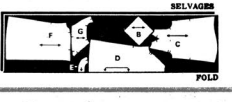
54" fabric without nap

size small



54" fabric without nap

size medium, large



### view 4 5 6 beach cover-up or robe (without pockets)

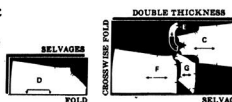
35" 36" fabric without nap

size small  
NOTE: Cut one E.



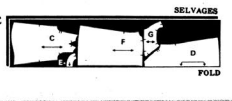
35" 36" fabric without nap

size medium, large  
NOTE: Cut one E.



44" 45" fabric without nap

size small, medium



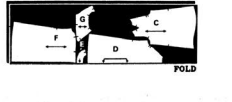
44" 45" fabric without nap

size large



54" fabric without nap

size small



54" fabric without nap

size medium, large





## 8276 sewing directions

■ Shaded area is right side of fabric

NOTE: Stitch  $\frac{1}{8}$ " seams, unless otherwise stated, matching same numbered notches.

NOTE: For heavy fabric, bias seam binding may be used to encase inner edges of facings.

NOTE: Pockets are optional.

VIEW 1 VIEW 2 VIEW 3

## beach cover-up or robe

NOTE: Rick-rack trim is optional.

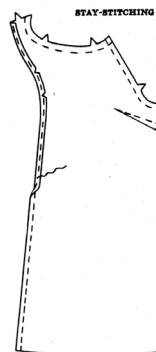
UNIT 1  
front

Make dart; press down.

Stitch  $\frac{1}{4}$ " from long unnotched edge of front extension.

Press under edge along stitching.

Clip curves; stitch.

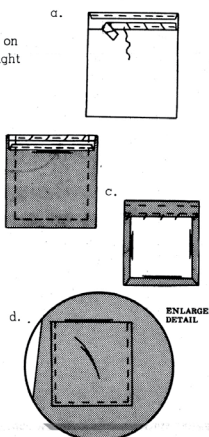
UNIT 2  
pockets

a—To reinforce upper edge of pocket, on WRONG side, stitch one edge of straight seam binding just above fold line. Stitch under  $\frac{1}{4}$ " on upper edge of pocket.

b—Turn upper edge to OUTSIDE along fold line, forming facing. Stitch along seam line on all raw edges; trim to  $\frac{1}{4}$ ".

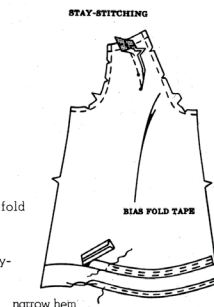
c—Press facing to INSIDE, pressing under remaining raw edges along stitching. Slip-stitch facing.

d—On OUTSIDE, pin pockets along pocket lines in front. Stitch close to side and lower edges, reinforcing stitching at upper corners.

UNIT 3  
sleeves

To form dart seam, on INSIDE, bring stitching lines together, matching small dots ●. Baste.

Stitch along stitching line. Slash; press dart seam open. To form casing, on INSIDE, pin bias fold tape to sleeve along solid line. Stitch both edges. Clip armhole edges of sleeves to stay-stitching along curves.

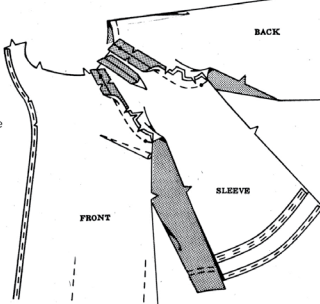


## stitching sleeve unit to front and back

With RIGHT sides together, pin sleeve to armhole edge of front and back, matching small dots ●.

Baste, easing sleeve to fit back between small dot ● and notches.

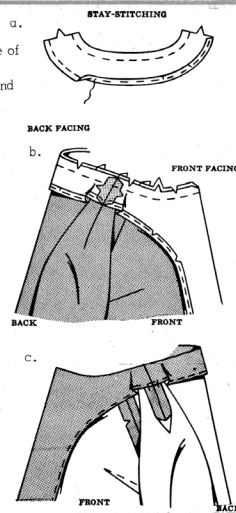
Stitch seams. To reinforce seams, stitch over first stitching. Clip curves. Press seams open.

UNIT 4  
facings

a—Stitch  $\frac{1}{4}$ " from unnotched edge of back facing. Press under edge along stitching and stitch.

b—Turn front extension to OUTSIDE, along fold line, forming facing.

With RIGHT sides together, stitch shoulder seams of facings. With RIGHT sides together, pin facing to neck edge, matching centers back and seams. Stitch. Trim seam and corners; clip curves.

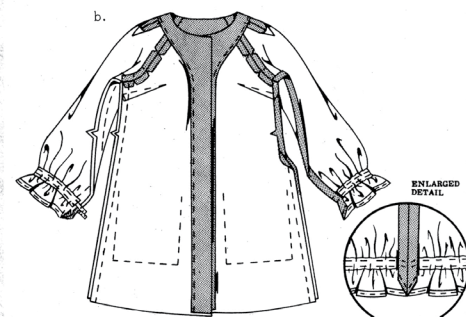
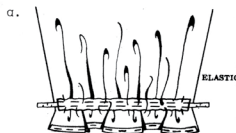


## elastic and underarm seams

a—Cut 2 pieces of elastic, each the person's wrist measurement, plus 2".

Insert elastic thru casings; adjust to fit.

Sew ends to sleeves.



b—Stitch entire underarm seams from lower edge to edge of sleeves. Stitch under seam allowance diagonally at lower edge of sleeves.

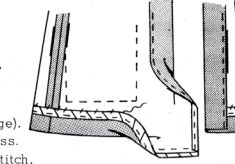
## hem

Mark length.

Open out front facings.

Press up hem along marking. Mark depth of hem; trim evenly.

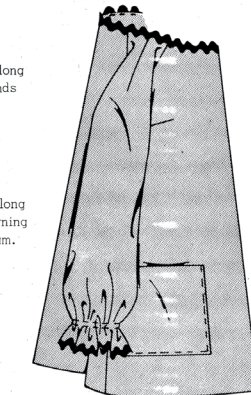
Stitch one edge of bias seam binding  $\frac{1}{4}$ " over raw edge (or stitch under  $\frac{1}{4}$ " on raw edge). Slip-stitch hem, easing in fullness. Press facing to INSIDE; slip-stitch.



## rick-rack trim

Stitch center of rick-rack along neck edge, turning under ends at front opening edges.

Stitch center of rick-rack along lower edges of sleeves, turning under ends at underarm seam.



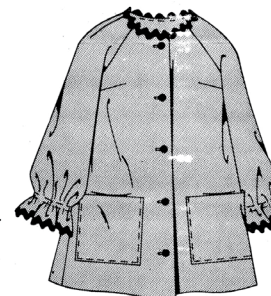
## finishing

Make worked or machine buttonholes in RIGHT front.

Lap fronts, matching centers.

Sew buttons under buttonholes.

Sew a snap at neck edge.



VIEW 4 VIEW 5 VIEW 6

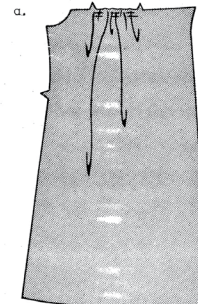
## beach cover-up or robe

NOTE: Embroidered eyelet edging trim is optional.

UNIT 1  
front and yoke front

a—Gather upper edge of front sections between notches.

To gather, stitch along seam line and  $\frac{1}{4}$ " INSIDE seam line, using a long machine-stitch.



## STAY-STITCHING

b—With RIGHT sides together, pin front to yoke front, matching centers and small dots ●.

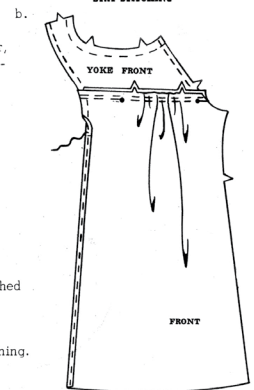
Adjust gathers to fit; baste.

Stitch. Trim seam; press up.

Seam may be top-stitched.

Stitch  $\frac{1}{4}$ " from long unnotched edge of front extension.

Press under edge along stitching. Clip curves; stitch.



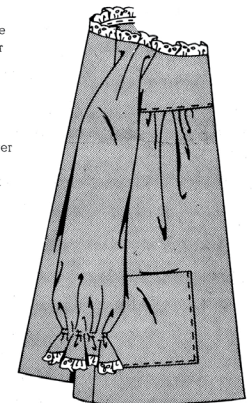
Continue same as for view 1, 2 and 3, see unit 2 thru hem in unit 4.

## embroidered eyelet edging trim

Pin neck edge over bound edge of eyelet edging, turning under ends at front opening edges.

Pin lower edges of sleeves over bound edge of eyelet edging, turning and lapping one end at underarm seam.

Hand-sew or machine-stitch all eyelet edging in place.



## finishing

Make worked or machine buttonholes in RIGHT yoke front.

Lap fronts, matching centers.

Sew buttons under buttonholes.

Sew a snap at neck edge.

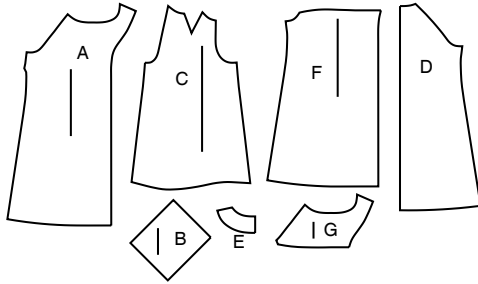


# Simplicity®

Thank you for purchasing this Simplicity pattern.  
We made every effort to provide you with a high quality product.

## SUPPLEMENTAL CUTTING LAYOUTS

7 PIECES



A Front - View 1,2,3  
B Pocket  
C Sleeve  
D Back  
E Back Neck Facing  
F Front - View 4,5,6  
G Yoke Front - View 4,5,6

Sizes	S	M	L
European	8-10 34-36	12-14 38-40	16-18 42-44
<b>FINISHED GARMENT MEASUREMENTS (Includes Design and Wearing Ease)</b>			
View 1,2,3 Bust	40½	44	48
View 4,5,6 Bust	42½	46	50
View 1,2,3 Waist	42	45½	49½
View 4,5,6 Waist	44	47½	51½
Width, lower edge	52½		
View 1,2,3 Beach Cover-up or Robe		56	60
View 4,5,6 Beach Cover-up or Robe		58½	62½
Finished back length from base of neck	55		
View 1,2,3,4,5,6 Beach Cover-up or Robe	34	34½	35
			Ins.



www.simplicity.com



info@simplicity.com



1-888-588-2700

## The Pattern

### SYMBOLS

- GRAIN LINE Place on straight grain of fabric parallel to selvage
- PLACE SOLID LINE on fold of fabric.
- CENTER FRONT OR BACK of garment.
- NOTCHES
- DOTS
- CUTTING LINE
- LENGTHEN OR SHORTEN LINES

SEAM ALLOWANCE: 5/8" (1.5cm) unless otherwise stated is included but not printed on MULTI-SIZE PATTERNS. Mark your size with colored felt tip pen. See chart on tissue for how to use MULTI-SIZE PATTERNS.

### ADJUST IF NEEDED

Make adjustments before placing pattern on fabric.

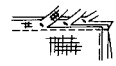
**TO LENGTHEN:**  
Cut pattern between lengthen or shorten lines. Spread pattern evenly, the amount needed and tape to paper.

**TO SHORTEN:**  
At lengthen or shorten lines, make an even pleat taking up amount needed. Tape in place.

When lengthen or shorten lines are not given, make adjustments at lower edge of pattern.

## Sewing

- SEW garment following **Sewing Directions**.
- PIN or machine-baste seams matching notches.
- STITCH 5/8" (1.5 cm) seams unless otherwise stated.
- PRESS seams open unless otherwise indicated clipping when necessary so seams will lie flat.
- TRIM seams to reduce bulk, as shown below.



Trim enclosed seams into layers



Trim corners



Clip inner curves



Notch outer curves

## General Directions

## Cutting/Marking

### BEFORE CUTTING:

PRESS pattern pieces with a warm dry iron. PRE-SHRINK fabric by pre-washing washables or steam-pressing non-washables.

CIRCLE your cutting layout.

PIN pattern to fabric as shown in Cutting Layouts.

• FOR DOUBLE THICKNESS: Fold fabric with RIGHT sides together.

• FOR SINGLE THICKNESS: Place fabric RIGHT side up.

• FOR PILE, SHADED OR ONE WAY DESIGN FABRICS: Use "with nap" layouts

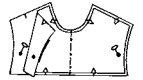
### AFTER CUTTING:

Transfer markings to WRONG side of fabric before removing pattern. Use pin and chalk method or dressmaker's tracing paper and wheel.

### To Quick Mark:

• Snip edge of fabric to mark notches, ends of fold lines and center lines.

• Pin mark dots.

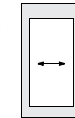


## SPECIAL CUTTING NOTES

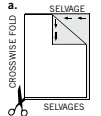
★ If layout shows a piece extending past fold, cut out all pieces except piece that extends.



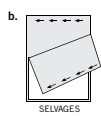
Open out fabric to single thickness. Cut extending piece on RIGHT side of fabric in position shown.



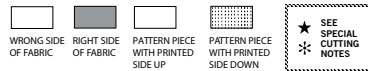
\* Mark small arrows along both selvages indicating direction of nap or design. Fold fabric crosswise with RIGHT sides together, and cut along fold (a).



Turn one fabric layer around so arrows on both layers go in the same direction. Place RIGHT sides together (b).



## Cutting Layouts

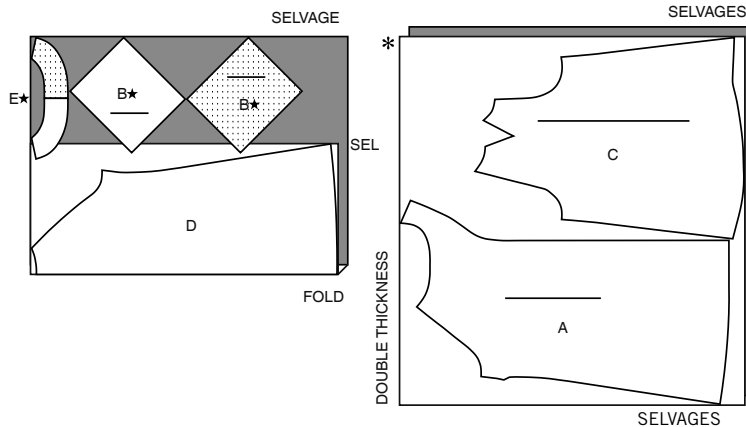


POSITION OF PATTERN PIECES MAY VARY SLIGHTLY ACCORDING TO YOUR PATTERN SIZE

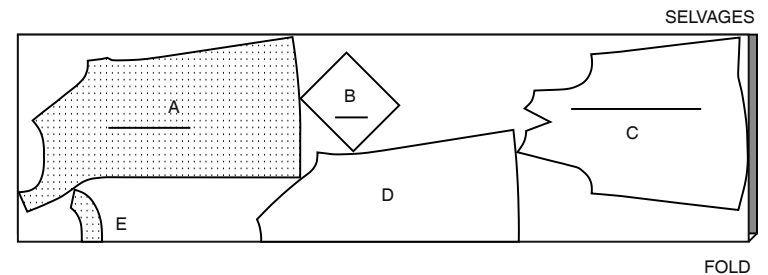
## VIEW 1,2 OR 3 BEACH COVER-UP OR ROBE (WITH POCKETS)

USE PIECES A B C D E

45" (115CM)  
WITH NAP  
ALL SIZES



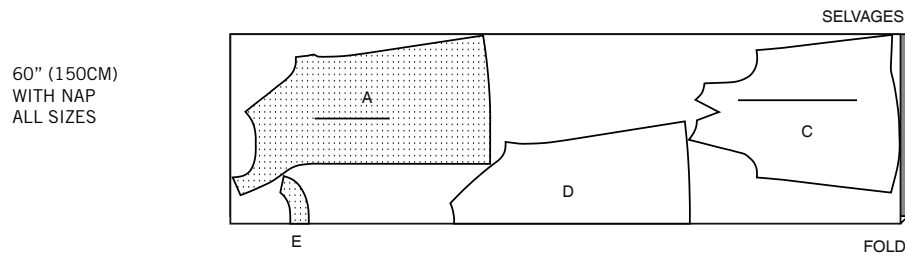
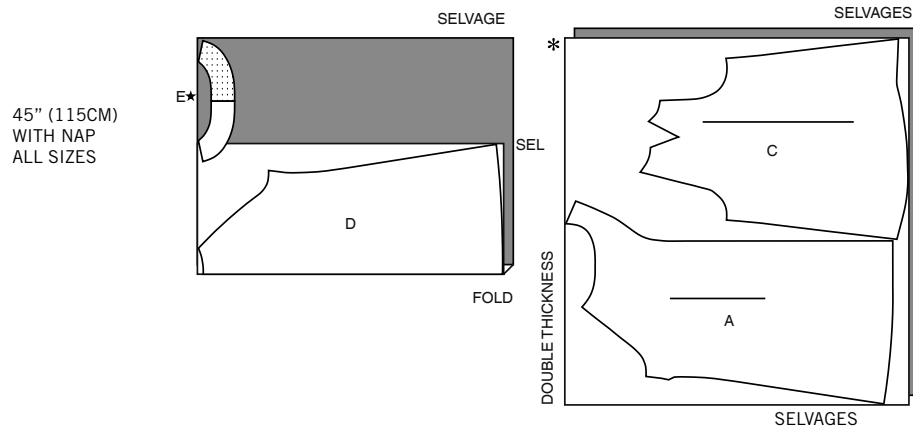
60" (150CM)  
WITH NAP  
ALL SIZES



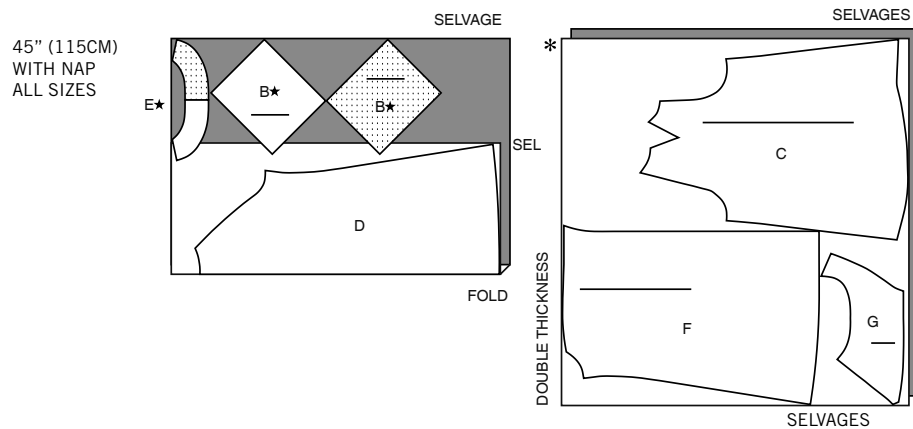
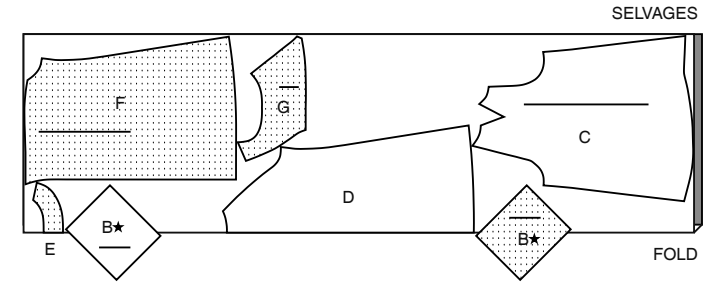
CUTTING LAYOUTS CONTINUED ON PAGE 2

**VIEW 1,2 OR 3 BEACH COVER-UP OR ROBE (WITHOUT POCKETS)**

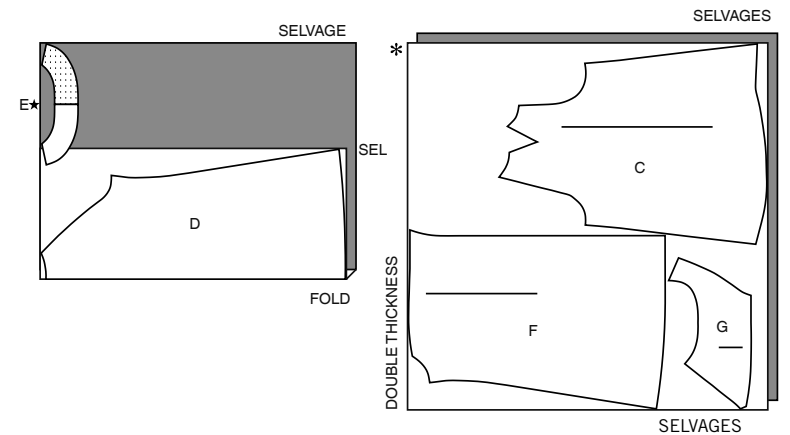
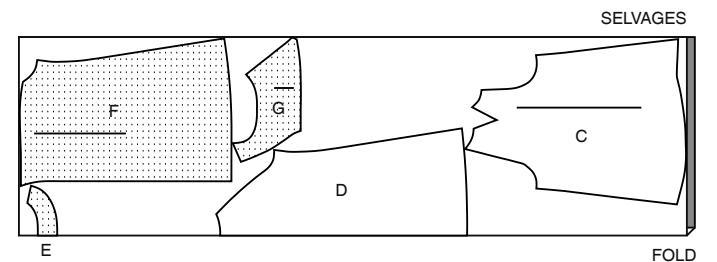
USE PIECES A C D E

**VIEW 4,5 OR 6 BEACH COVER-UP OR ROBE (WITH POCKETS)**

USE PIECES B C D E F G

60" (150CM)  
WITH NAP  
ALL SIZES**VIEW 4,5 OR 6 BEACH COVER-UP OR ROBE (WITHOUT POCKETS)**

USE PIECES C D E F G

45" (115CM)  
WITH NAP  
ALL SIZES60" (150CM)  
WITH NAP  
ALL SIZES



# Congrats!

You've completed your sewing adventure

---

## SHARE YOUR LOOK



Post your pattern and tag us  
**@simplicity\_creative\_group** and **#simplicitypatterns**  
for a chance to be featured on our social media.

Look for more PDF patterns at [simplicity.com](https://www.simplicity.com)

Have a question or need help with your sewing project call us at  
1-888-588-2700



Simplicity ©2024 a division of IG Design Group Americas Inc. • Atlanta, GA 30342 USA [www.thedesigngroup.com](https://www.thedesigngroup.com) • All Rights Reserved. [www.simplicity.com](https://www.simplicity.com) • Made in the U.S.A. Fabriqué aux États-Unis.

To be used for individual private home use only and not for commercial or manufacturing purposes. • A usage privé seulement et non à des fins commerciales ou de production en série. • Para uso privado solamente, no se puede utilizar con propósitos de comercialización o de producción en serie.