

S9913

**Simplicity**

1950s Vintage



easy-to-sew



Designed and printed in USA.

Easy

Facile

**MISSES' DRESS**

**Suggested Fabrics:** **View 1:** Cotton, Denim, Linen, Pique, Rayon, Taffeta, Tissue Faille. **View 2:** Butcher Linen, Chambray, Lengthwise Striped or Plain Cotton, Pique, Rayon, Taffeta. **Interfacing:** Lightweight Sew-in.

**Notions:** **View 1 and 2:** One 12" (30cm) zipper or snaps and one hook and eye, ¾" or 1" (2cm or 2.5cm) belt buckle (optional), ¾" or 1" (2cm or 2.5cm) belt backing (optional). **Also for View 1:** One button, 1¾ yds. (1.7m) of ¼" (6mm) soutache braid. **View 2:** Three buttons.

<b>Sizes</b>	6	8	10	12	14	16	18	20	22	24
<b>European</b>	32	34	36	38	40	42	44	46	48	50

**BODY MEASUREMENTS: Select pattern size based on body measurements**

<b>Bust</b>	30½	31½	32½	34	36	38	40	42	44	46	Ins.
<b>Waist</b>	23	24	25	26½	28	30	32	34	37	39	"
<b>Hip-9" below waist</b>	32½	33½	34½	36	38	40	42	44	46	48	"
<b>Back-neck to waist</b>	15½	15¾	16	16¼	16½	16¾	17	17¼	17½	17¾	"

**Interfacing - View 1 & 2**

20" - 1¾ yds.

**View 1 or 2 - Lengthwise Striped or Plain Fabric**

45"*	3%	3¾	3¾	3¾	3¾	4	4¾	4¾	4¾	4¾	Yds.
60"*	2½	2%	2%	2%	2%	3	3	3%	3%	3¾	"

**FINISHED GARMENT MEASUREMENTS (Includes Design and Wearing Ease)**

<b>View 1,2 Bust</b>	34	35	36	37½	39½	41½	43½	45½	47½	49½	Ins.
<b>View 1,2 Waist</b>	24	25	26	27½	29½	31½	33½	35½	37½	39½	"
<b>Finished back length from base of neck</b>											
<b>View 1,2 Dress</b>	45	45½	45½	45¾	46	46¼	46½	46¾	47	47¼	Ins.

\*with nap \*\*without nap

**ROBE POUR JEUNES FEMMES**

**Tissus Conseillés:** **Modèle 1 :** Coton, Denim, Toile de lin, Piqué, Rayonne, Taffetas, Faille légère. **Modèle 2 :** Toile de lin butcher, Chambray, Coton simple ou à rayures dans le sens de la longueur, Piqué, Rayonne, Taffetas. **Entoilage :** léger à coudre.

**Mercerie:** **Modèle 1 et 2 :** 1 fermeture à glissière de 30 cm ou boutons-pression et 1 agrafe, boucle pour ceinture de 2cm ou 2.5cm (facultatif), sangle pour ceinture de 2cm ou 2.5cm (facultatif). **Aussi pour le Modèle 1 :** 1 bouton, 1.7m de galon soutache de 6mm. **Modèle 2 :** 3 boutons.

<b>Tailles</b>	6	8	10	12	14	16	18	20	22	24
<b>Françaises</b>	34	36	38	40	42	44	46	48	50	52
<b>Européen</b>	32	34	36	38	40	42	44	46	48	50

**MESURES DU CORPS: Choisissez la taille du patron basée sur les mesures du corps**

<b>Poitrine</b>	78	80	83	87	92	97	102	107	112	117	cm
<b>Taille</b>	58	61	64	67	71	76	81	87	94	99	"
<b>Hanches (23cm au-dessous de la taille)</b>	83	85	88	92	97	102	107	112	117	122	cm
<b>Dos du cou à la taille</b>	39.5	40	40.5	41.5	42	42.5	43	44	44	44.5	"

**Entoilage - Modèle 1 et 2**

51cm - 1.4m

**Modèle 1 ou 2 - Tissu à rayures verticale ou tissu uni**

115cm*	3.3	3.4	3.4	3.4	3.5	3.7	3.8	3.8	4.0	4.2	m
150cm*	2.3	2.4	2.4	2.6	2.6	2.7	2.7	2.9	2.9	3.0	"

**MESURES DES VÊTEMENTS FINI (Motif et aisance de port compris)**

<b>Modèle 1,2 Poitrine</b>	86	89	91	95	100	105	110	116	121	126	cm
<b>Modèle 1,2 Taille</b>	61	64	66	70	75	80	85	90	95	100	"
<b>Longueur finie - dos, votre nuque à l'ourlet</b>											
<b>Modèle 1,2 Robe</b>	114	115	116	116	117	117	118	119	119	120	cm

\*avec sens \*\*sans sens



1



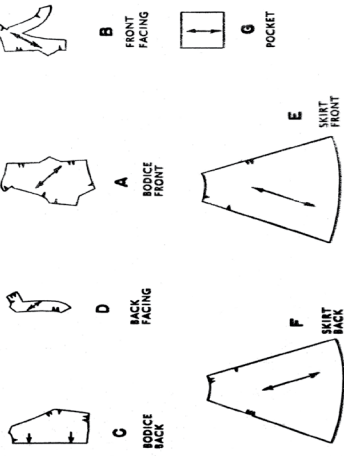
2

**AUTHENTIC VINTAGE PATTERN REPRODUCTION**

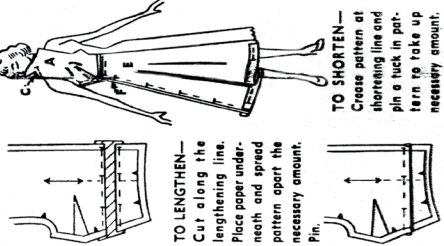
INCLUDES ADDITIONAL SIZE OPTIONS AND CUTTING LAYOUTS

**Simplicity Primer**  
GUIDE FOR CUTTING AND SEWING—SEE DETAILED DRESSMAKING

1. STUDY THE PIECES 7 PIECES GIVEN SEE CUTTING NOTES



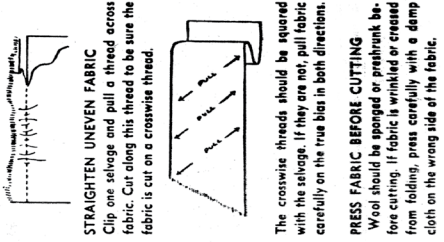
2. ADJUST PATTERN



**TO LENGTHEN—**  
Cut along the lengthening line. Place paper underneath and spread pattern apart the necessary amount. Pin.

**TO SHORTEN—**  
Crease pattern at shortening line and pin a tuck in pattern to take up necessary amount.

3. PREPARE FABRIC

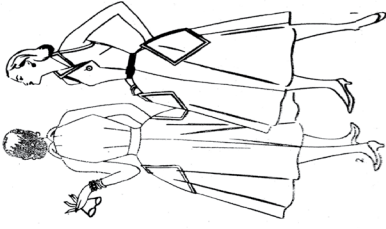


**STRAIGHTEN UNEVEN FABRIC**  
Clip one selvage and pull a thread across fabric. Cut along this thread to be sure the fabric is cut on a crosswise thread.

The crosswise threads should be squared with the selvage. If they are not, pull fabric carefully on the true bias in both directions.

**PRESS FABRIC BEFORE CUTTING**  
Wool should be sponged or restimbed before cutting. If fabric is wrinkled or creased from folding, press carefully with a damp cloth on the wrong side of the fabric.

4554



PIECES USED

VIEW 1 AND 2—A, B, C, D, E, F, G

CUTTING NOTES

**CHECK PATTERN LENGTH WITH YOUR LENGTH BEFORE CUTTING FABRIC.**  
When pattern piece extends beyond fold of fabric, open fabric before cutting; place pattern on right side of fabric in position shown.

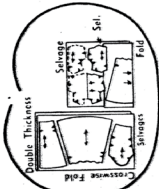
**VIEW 1 AND 2 INTERFACING—**Trim away armhole edge of B. Cut 2 by altered pattern as shown in cutting diagrams.

**POCKET INTERFACING—**Cut 2 by G.

4. LAYOUT PATTERN AND CUT SEAM ALLOWED — 5/8" UNLESS OTHERWISE STATED

Circle diagram for size, width and style. Place pattern on RIGHT side of fabric for single thickness and on WRONG side for double thickness. Reverse pattern for second piece when duplicate pieces are cut one at a time. When pattern pieces extend beyond fold of fabric, open fabric and cut pattern on RIGHT side of fabric. Broken lines indicate duplicate pieces or shape of whole piece.

**FOR STRAIGHT GRAIN:** Place pattern on fabric with ends of arrow even from selvage; pin. Place fold lines exactly on fold of fabric; pin. Margins may overlap and are removed as pattern and fabric is cut along cutting line.



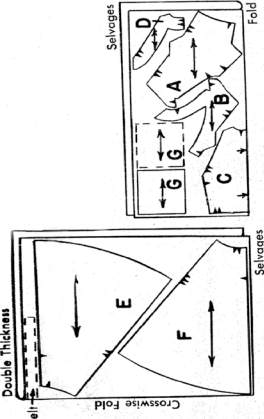
CUTTING DIAGRAMS FOR FABRIC WITHOUT NAP OR ONE WAY DESIGN UNLESS OTHERWISE STATED

Views 1 and 2

LENGTHWISE STRIPED OR PLAIN FABRIC

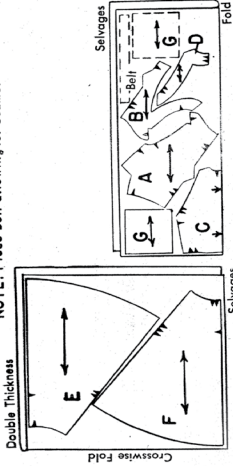
5. CUTTING

Sizes 12, 14, 16, 18 44" Fabric



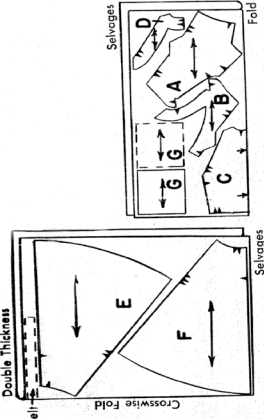
Size 20 44" Fabric  
Sizes 12, 14 39" Fabric

NOTE: Piece belt allowing for seams.



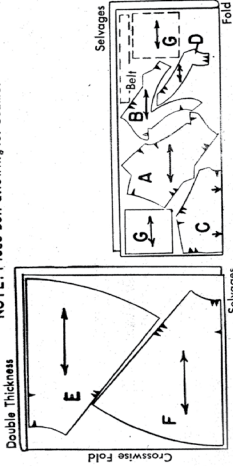
5. CUTTING

Sizes 12, 14, 16, 18 44" Fabric

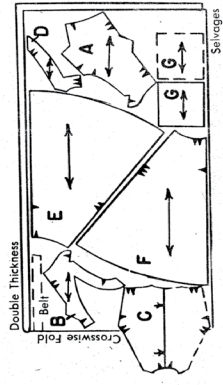


Size 20 44" Fabric  
Sizes 12, 14 39" Fabric

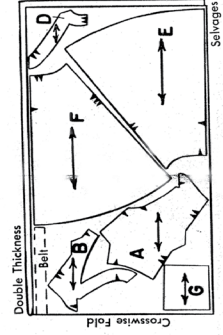
NOTE: Piece belt allowing for seams.



Sizes 16, 18, 20 39" Fabric  
Sizes 12, 14 35" Fabric

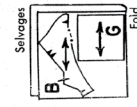


Sizes 16, 18, 20 35" Fabric



INTERFACING

All Sizes 35" Fabric



6. MARK FABRIC

The Pattern line of your Simplicity pattern is perfect, as are all trimming lines, cutting lines and other important construction points. It is essential that all of these construction points be marked on fabric. Here are two ways to mark fabric.

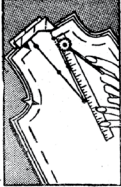
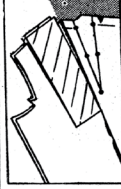
Snip notches or mark notches. Run bastings at centers front and back. Do not remove center bastings until garment is finished.



**TAILOR'S TACKS**—Use long double thread and make tailor's tacks thru marking lines and o's allowing two inch loops. After all tacks are made, cut top loops before removing pattern. Separate two thicknesses of fabric and clip threads between layers. Do not remove pattern until ready to sew.



**MARKING WITH TRACING WHEEL**—Slip a sheet of tracing paper under both pieces of garment and another on top under pattern piece, right sides of paper toward fabric. Trace lines of pattern with tracing wheel, using a ruler on straight lines. Do not remove pattern until ready to sew.



4354

**GENERAL INSTRUCTIONS**

After garment is cut, notches and other identification marks should be transferred to garment. Stitch stay lines on bias; off grain edges, or curved edges, 1/2" from edge in direction shown, to keep them from stretching.

**DIRECTION OF STITCHING SEAMS:** Stitch skirts from hem to waistline. Stitch shoulder seam from neck to armhole. Stitch bodice from armhole to waist. Stitch darts from wide end to point.

For enclosed seams, facings, collars, etc., unless otherwise instructed, trim seams to 1/4" from stitching. Clip curves at intervals and clip corners.

Pin or machine-baste garment together following procedure below. Match notches and make 5/8" seams. Try on garment, pinning shoulder pads in place if required. Make sure that shoulder seam is directly on top of the shoulder. (Unless style indicates otherwise.)

Make adjustments if necessary; stitch and finish construction except hem. Press each seam before it is joined to another. Press seams open in same direction as stitched unless otherwise instructed.

**SEAM FINISHES**

- a-Pink seams.
- b-Overcast separately.
- c-Turn in edges 1/8" and stitch separately.
- d-For enclosed seam, trim seam, clipping corners and curves.

**DRESS VIEW 1**

**BODICE**

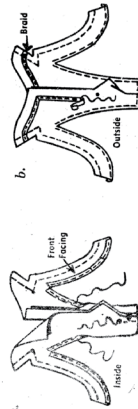
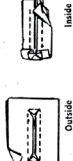
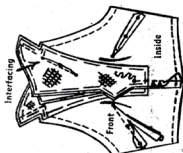
1-Baste interfacing to **WRONG** side of Bodice Front. Machine-stitch 5/8" from armhole and neck edges, stitching thru small  $\bullet$  at inner corner. Stitch 1/2" from waistline edge.

On **INSIDE**, to make neck dart, fold along dart line of small end, medium  $\bullet$ 's.

Stitch 1/8" from medium  $\bullet$ , tapering to nothing at small  $\bullet$ 's. Press dart toward side edge. To make underarm dart, bring small  $\bullet$ 's together on **INSIDE**. Baste thru  $\bullet$ 's, tapering to nothing at single  $\bullet$ . Stitch. Trim; press open. Join center front seam below small  $\bullet$ .

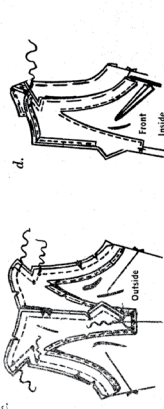
2-Make bound buttonhole in **RIGHT** front. (If desired, make worked or machine made buttonhole when garment is finished.)

Baste a strip of fabric (**RIGHT** sides together) over markings. Stitch 1/8" above and below line, square at ends. Slash as shown. Draw strip to **INSIDE**. Make piping with edges meeting, forming a pleat at ends; sew shown.



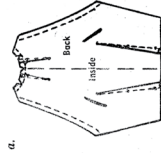
3-a-Stay-stitch 5/8" from armhole and neck edges of Front Facing, stitching thru small  $\bullet$  at inner corner. Join center front seam below small  $\bullet$ . Stitch under inner raw edge of Facing or finish with bias seam binding.

b-Sew sashette braid by hand or machine to **RIGHT** side of Facing 7/8" from raw edge, turning in ends at small  $\bullet$ , as shown.



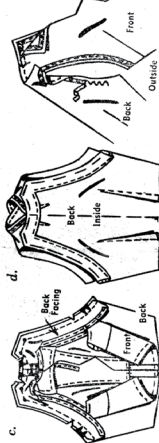
c-With **RIGHT** sides together, baste Facing to Front matching small  $\bullet$ 's, easing Bodice to fit at armhole edge. Stitch front extension breaking at center front seam. Stitch armhole edge below small  $\bullet$ . Trim seam; clip curve.

d-Turn facing to **INSIDE**. Baste. Tack to center front seam. Whip center back ends of extension together at small  $\bullet$ .



4-a-To make dart at neck edge of Bodice Back on **INSIDE**, fold along dart line of small  $\bullet$ 's. Stitch 1/8" from fold at neck edge, tapering to nothing at lower small  $\bullet$ . Make waistline dart. Press darts toward center. Machine-stitch 1/2" from neck and armhole edges. Clip neck edge to stitching.

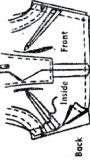
b-Clip Front and Front Facing to small  $\bullet$  at reinforced corner at neck edge. With **RIGHT** sides together, pin Front to Back at shoulder and neck edges, matching centers and small  $\bullet$ 's. Baste entire neck and shoulder edges.



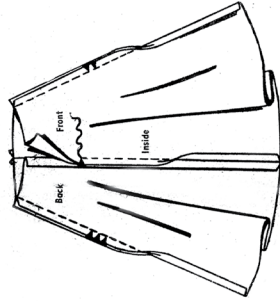
c-Join center back seam of Back Facing. Stitch under 1/4" on inner unnotched edge of Facing or finish with bias seam binding.

With **RIGHT** sides together, baste Facing to armhole, shoulder and neck edges, matching centers and small  $\bullet$ 's, easing Bodice to fit at armhole edge. Be careful not to catch in finished edges of Front. Stitch as basted. Trim seam; clip curves.

d-Turn Facing to **INSIDE**; baste. On **OUTSIDE**, sew sashette braid by hand or machine stitch 1/4" from armhole edge.



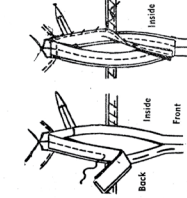
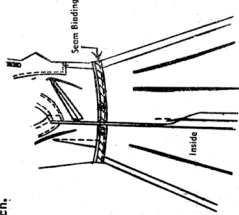
5-Join side seams, leaving **LEFT** side open below notch.



**SKIRT**  
6-Baste center front seam of Skirt Front. Baste center back seam of Skirt Back. Baste side seam. Allow Skirt to hang over night. If seems draw, clip bastings and allow to drop. Stitch seams, leaving **LEFT** side open above notch.

**WAISTLINE SEAM**

7-With **RIGHT** sides together, pin Skirt to Bodice, matching centers and sides. To prevent stretching, baste one edge of bias seam binding along seam on Skirt side. Stitch. Press seam up. If desired, top-stitch.



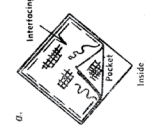
**SIDE OPENING**  
8-SNAP FASTENING-Cut bias strips 1-1/2" wide for front and 2" wide for back and 1" longer than opening.

Baste under 1/2" on back edge of opening. Fold wide strip in half lengthwise; place under basted edge, raw edges even; stitch on **OUTSIDE** close to fold edge.

Stitch under one edge of remaining strip. Join to front edge in 1/2" seam. Turn front edge to **INSIDE** along seam line; slip-stitch in place.

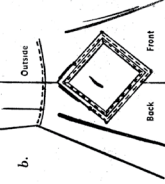
Let front over back and sew ends together. Fasten with snaps hook and eye at waistline.

**ZIPPER**-Follow instructions given with zipper.



**POCKET**

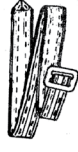
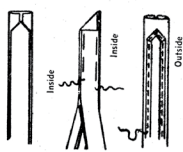
9-a-Baste interfacing to **WRONG** side of Pocket. On **OUTSIDE**, sew sashette braid to Pocket 7/8" from raw edge, turning in and lapping one end at lower edge of Pocket. Face Pocket, leaving an opening. Trim seam.



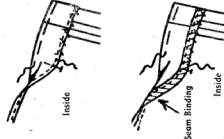
b-Turn, slip-stitch opening. On **OUTSIDE**, baste Pocket to Skirt, matching small and medium  $\bullet$ 's. Stitch close to edge below medium  $\bullet$ 's, as shown.

**FINISHING AND HEM**

10-Point one end of belt backing. Cut fabric 3/4" wider and 1/2" longer than belt backing. Turn under 3/8" on long edges of belt fabric; baste. Place fabric over **WRONG** side of backing. On fabric side, sew sashette braid by hand or machine 1/4" from long edges. Turn fabric over pointed end, as shown. Baste. Stitch close to edge. Sew buckle to remaining end. If desired, a purchased belt may be used.



11-To finish underside of bound buttonhole, baste facing around buttonhole; slash facing and clip to corners. Slip-stitch the edges to buttonhole.



12-Mark length. Turn up lower edge along marking; baste. Mark depth of hem; trim evenly. Stitch under raw edge or finish with seam binding. Slip-stitch in place, easing in fullness. Lap **RIGHT** over **LEFT**, matching centers; sew button under buttonhole. Press Dress thoroughly.

**DRESS VIEW 2**

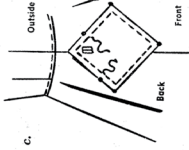
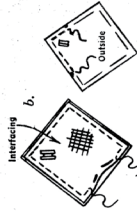
Make same as in View 1, see Steps 1 thru 8, omitting sashette braid.

**POCKET**

13-a-Baste interfacing to **WRONG** side of Pocket same as in Step 9. Make bound buttonhole in Pocket. Face Pocket, leaving one edge open.

b-Turn; slip-stitch opening. Finish underside of bound buttonhole same as in Step 11. Top-stitch 5/8" from finished edge above medium  $\bullet$ 's, as shown.

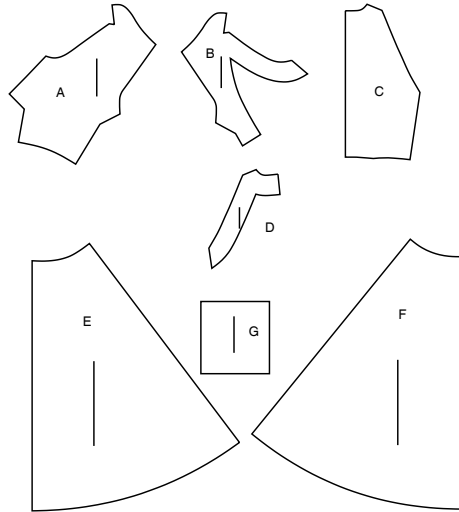
c-On **OUTSIDE**, baste Pocket to Skirt, matching small and medium  $\bullet$ 's. Top-stitch 5/8" from finished edge below medium  $\bullet$ 's, connecting stitching as shown. For belt, see Step 10, omitting sashette braid. For Hem, see Step 12. Sew button under buttonhole on Pockets.





Thank you for purchasing this Simplicity pattern. We made every effort to provide you with a high quality product.

**SUPPLEMENTAL CUTTING LAYOUTS**



7 PIECES

- A BODICE FRONT
- B FRONT FACING
- C BODICE BACK
- D BACK FACING
- E SKIRT FRONT
- F SKIRT BACK
- G POCKET

**General Directions**

**The Pattern**

- SYMBOLS**
- GRAIN LINE Place on straight grain of fabric parallel to selvage
  - PLACE SOLID LINE on fold of fabric.
  - CENTER FRONT OR BACK of garment.
  - NOTCHES
  - DOTS
  - CUTTING LINE
  - LENGTHEN OR SHORTEN LINES
- SEAM ALLOWANCE: 5/8" (1.5cm) unless otherwise stated is included but not printed on MULTI-SIZE PATTERNS. Mark your size with colored felt tip pen. See chart on tissue for how to use MULTI-SIZE PATTERNS.

**ADJUST IF NEEDED**

Make adjustments before placing pattern on fabric.

**TO LENGTHEN:** Cut pattern between lengthen or shorten lines. Spread pattern evenly, the amount needed and tape to paper.

**TO SHORTEN:** At lengthen or shorten lines, make an even pleat taking up amount needed. Tape in place.

When lengthen or shorten lines are not given, make adjustments at lower edge of pattern.

**Cutting/Marking**

**BEFORE CUTTING:**

PRESS pattern pieces with a warm dry iron. PRE-SHRINK fabric by pre-washing washables or steam-pressing non-washables.

CIRCLE your cutting layout.

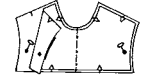
PIN pattern to fabric as shown in Cutting Layouts.

- FOR DOUBLE THICKNESS: Fold fabric with RIGHT sides together.
- FOR SINGLE THICKNESS: Place fabric RIGHT side up.
- FOR PILE, SHADED OR ONE WAY DESIGN FABRICS: Use "with nap" layouts

**AFTER CUTTING:**

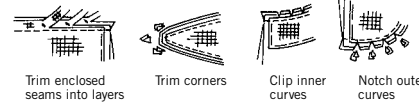
Transfer markings to WRONG side of fabric before removing pattern. Use pin and chalk method or dressmaker's tracing paper and wheel.

- To Quick Mark:**
- Snip edge of fabric to mark notches, ends of fold lines and center lines.
  - Pin mark dots.



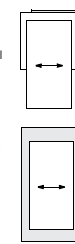
**Sewing**

- SEW garment following **Sewing Directions**.
- PIN or machine-baste seams matching notches.
- STITCH 5/8" (1.5 cm) seams unless otherwise stated.
- PRESS seams open unless otherwise indicated clipping when necessary so seams will lie flat.
- TRIM seams to reduce bulk, as shown below.



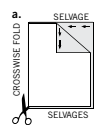
**SPECIAL CUTTING NOTES**

★ If layout shows a piece extending past fold, cut out all pieces except piece that extends.

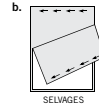


Open out fabric to single thickness. Cut extending piece on RIGHT side of fabric in position shown.

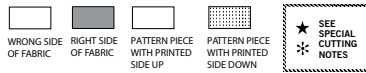
✱ Mark small arrows along both selvages indicating direction of nap or design. Fold fabric crosswise with RIGHT sides together, and cut along fold (a).



Turn one fabric layer around so arrows on both layers go in the same direction. Place RIGHT sides together (b).



**Cutting Layouts**

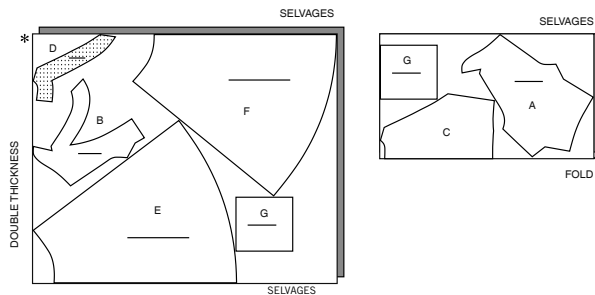


POSITION OF PATTERN PIECES MAY VARY SLIGHTLY ACCORDING TO YOUR PATTERN SIZE

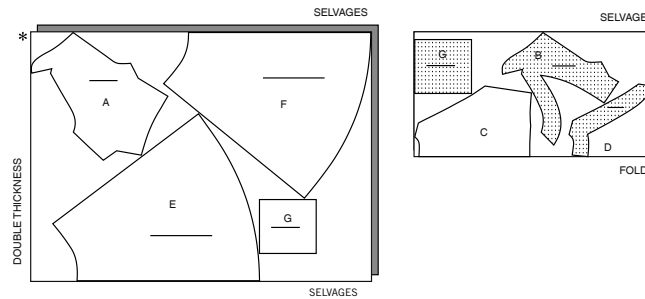
**VIEWS 1 OR 2 - LENGTHWISE STRIPE OR PLAIN FABRIC**

USE PIECES A B C D E F G

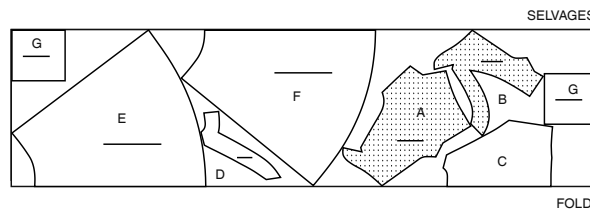
45" (15CM) WITH NAP  
SIZES 6 8 10 12 14 16 18 20



45" (15CM) WITH NAP  
SIZES 22 24



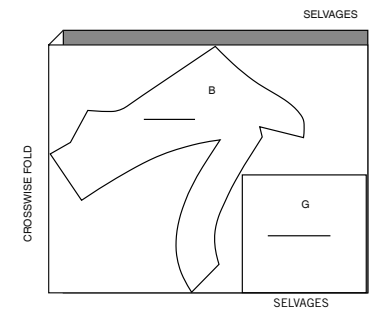
60" (150CM) WITH NAP  
ALL SIZES



**INTERFACING**

USE PIECES B G

20" (51CM) ALL SIZES





# Congrats!

You've completed your sewing adventure

---

**SHARE  
YOUR** LOOK



Post your pattern and tag us  
**@simplicity\_creative\_group** and **#simplicitypatterns**  
for a chance to be featured on our social media.

Look for more PDF patterns at [simplicity.com](https://www.simplicity.com)

Have a question or need help with your sewing project call us at  
1-888-588-2700



Simplicity ©2024 a division of IG Design Group Americas Inc. • Atlanta, GA 30342 USA [www.thedesigngroup.com](http://www.thedesigngroup.com) • All Rights Reserved. [www.simplicity.com](http://www.simplicity.com) • Made in the U.S.A. Fabriqué aux États-Unis.

To be used for individual private home use only and not for commercial or manufacturing purposes. • A usage privé seulement et non à des fins commerciales ou de production en série. • Para uso privado solamente, no se puede utilizar con propósitos de comercialización o de producción en serie.