

S9906

Simplicity

1960s Vintage

Jiffy

2 main pattern pieces
Easy Cut
Easy Sew



Designed and printed in USA.

Shop all the pattern brands you love @

Simplicity.com

Very Easy

MISSES' APRON IN TWO LENGTHS

Suggested Fabrics: Blends, Broadcloth, Cotton Satin, Cottons, Gingham, Pique, Poplin, Sailcloth, Seersucker, Terry Cloth, Ticking. **View 2** also in Uneven Denim Stripes. **View 3** also in Border Prints.

Notions: **Views 1,2,3:** One 1½" (3cm) button. **Also for View 1:** 2½ yds. (2.5m) of ½" (1.3cm) flat-woven braid trim.

Sizes	XS (4-6)	S (8-10)	M (12-14)	L (16-18)	XL (20-22)	
European	30-32	34-36	38-40	42-44	46-48	

View 1 - Apron	45"*	115cm*	XS	S	M	L	XL	Yds.	m
	2½	2.3	3	2.7	3½	2.9	3¾	3.0	

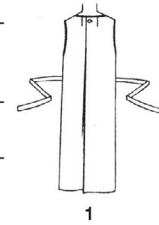
View 2 - Apron (Lengthwise Striped or Plain Fabric)	45"*	115cm*	XS	S	M	L	XL	Yds.	m
	2½	2.3	2½	2.4	2½	2.4	2¾	2.6	

View 3 - Apron (Bordered Fabric - Cut Crosswise)	45"*	115cm*	XS	S	M	L	XL	Yds.	m
	2½	2.3	2½	2.4	2½	2.4	2¾	2.6	

View 3 - Apron (Plain Fabric - Cut Lengthwise)	45"*	115cm*	XS	S	M	L	XL	Yds.	m
	2½	2.3	2½	2.4	2½	2.4	2¾	2.6	

FINISHED GARMENT MEASUREMENTS (Includes Design and Wearing Ease)

View 1,2,3 Apron Bust	40	42	45½	49½	53½	Ins.	
	(102)	(107)	(116)	(126)	(136)	(cm)	
View 1,2,3 Apron Waist	41	43	46½	50½	54½	Ins.	
	(104)	(109)	(118)	(128)	(138)	(cm)	
View 1,2,3 Apron Hip	43	45	48½	52½	56½	Ins.	
	(109)	(114)	(123)	(133)	(144)	(cm)	
Width, lower edge	View 1 Apron	46½	48½	52	56	60	Ins.
	(118)	(123)	(132)	(142)	(152)	(cm)	
View 2 and 3 Apron	43½	45½	49	53	57	Ins.	
	(110)	(116)	(124)	(135)	(145)	(cm)	
Finished back length from base of neck	View 1 Apron	40	40½	41	41½	42	Ins.
	(102)	(103)	(104)	(105)	(107)	(cm)	
View 2 and 3 Apron	26½	27	27½	28	28½	Ins.	
	(67)	(69)	(70)	(71)	(72)	(cm)	



1



2



3

*with nap **with out nap

AUTHENTIC VINTAGE PATTERN REPRODUCTION

INCLUDES ADDITIONAL SIZE OPTIONS AND CUTTING LAYOUTS

HOW TO USE YOUR SIMPLICITY PATTERN

1. SELECT THE PATTERN PIECES for the view you are making. These pieces are listed in the box to the right.

2. PRESS THE PATTERN PIECES.

3. COMPARE YOUR BODY MEASUREMENTS with those on back of the envelope.

4. IF ALTERATIONS ARE NECESSARY, they should be made in the pattern before placing on fabric. (Caution: In addition to body measurements, ease is allowed in the pattern for garment style and comfortable wearing.) Pattern pieces show where to make simple alterations such as:

To Shorten
Crease on printed line. Pin a pleat as deep as half the amount to be shortened. (i.e. $1/2$ " deep to shorten $1/2$ ".)

To Lengthen
Cut pattern on printed line. Place paper underneath. Spread pattern the necessary amount and pin to paper.

For Children's Wear, alter at lower edge except in shorts and socks etc., when crutch needs alterations, in which case alter above the crutch.
See the **Simplicity Sewing Book** for other alterations.

5. PREPARE FABRIC. Press creases out of fabric. Unless fabric is pre-shrunk, sponge or shrink before cutting.
To Straighten End. Snip selvage and pull.

Simplicity Tracing Paper Available at haberdashery and pattern counters. 6 large sheets in three colours.

Cutting Layouts

GENERAL NOTE: When pattern pieces extend beyond fold of fabric, cut out all pieces except pieces that extend there open out fabric and on single thickness. Cut all pieces except B, then open out fabric and on single thickness, cut 2 by B on Right side of fabric in position shown, with stripes going in the same direction.

NOTE: Back Neck Facing - Cut 2 by E.

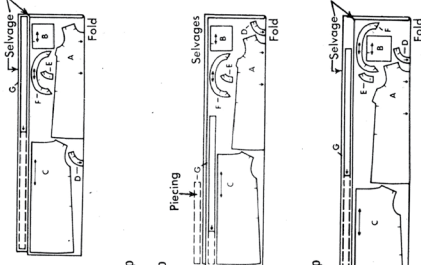
View 1 APRON

44" 45" Fabric Without Nap
Size Small

44" 45" Fabric Without Nap
Size Medium

41" 42" Fabric Without Nap
Size Small

NOTE: Cut 1 G and 1 I by piecing G underneath.

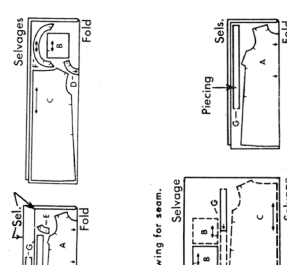


NOTE: Piece G as shown, allowing for seam.

41" 42" Fabric Without Nap
Size Medium, Large

35" 36" Fabric Without Nap
Size Small

NOTE: Piece G as shown, allowing for seam.



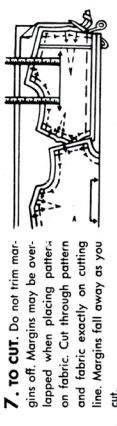
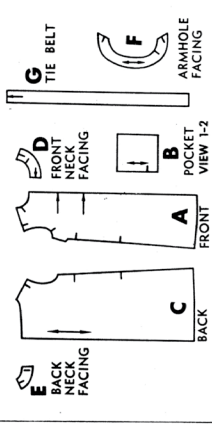
NOTE: Piece G as shown, allowing for seam.

35" 36" Fabric Without Nap
Size Medium, Large

LIST OF PIECES

SELECT YOUR PATTERN PIECES, SEE CUTTING LAYOUTS AND NOTES
VIEW 1 AND 2 - A,B,C,D,E,F,G.
VIEW 3 - A,C,D,E,F,G

7. PIECES GIVEN APRON



7. TO CUT. Do not trim markings off. Margins may be overlapped when piecing pattern on fabric. Cut through pattern and fabric exactly on cutting line. Margins fall away as you cut.

SEWING DIRECTIONS

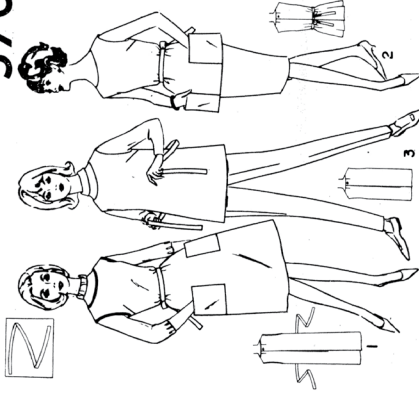
1. READ INSTRUCTIONS printed on each pattern piece as you work.

2. WORK IN UNITS according to the sewing directions.

3. STAY-STITCHING is a line of regular machine-stitching (in one thickness of fabric) on, or close to the seam line within the seam allowance. It prevents stretching.

Stay-stitching will be shown **only the first time** a section of garment is illustrated in the instructions.

Simplicity PRIMER
Guide for Cutting - Sewing - Detailed Dressmaking 5763



- 4. SEAM ALLOWANCE is $1/4$ " unless otherwise stated.
- 5. TO JOIN SEAMS, match notches with some numbers, 1 to 1, 2 to 2, etc.
- 6. STITCHING DIRECTIONS are shown by arrows on printed seam lines. Press each seam before it is joined to another. Press in same direction as it was stitched. Note: We suggest machine-basting, using longest machine stitch.

THE SIMPLICITY SEWING BOOK featuring the Simplicity Unit System of Sewing is now on sale.

View 2 APRON

NOTE: Pockets - For striped fabric (Even or Uneven) Cut 2 by B on crosswise grain of fabric as shown outside of layout. Cut 2 by C on bias. For plain fabric, cut 2 by B on Right side of fabric and on single thickness, cut 2 by C on Right side of fabric in position shown, with stripes going in the same direction.

41" 42" Fabric Without Nap
Size Small

44" 45" Fabric Without Nap
Size Small, Medium

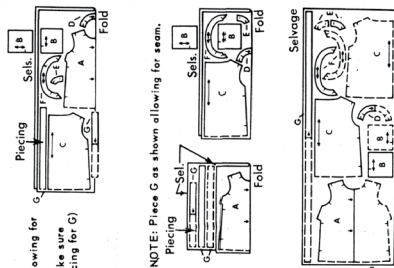
NOTE: Piece G as shown, allowing for seam.

For Uneven striped fabric, make sure that the stripes are in the piecing (for G) go in the same direction.

41" 42" Fabric Without Nap
Size Medium, Large

44" 45" Fabric Without Nap
Size Large

35" 36" Fabric Without Nap
Size Small, Medium



NOTE: Piece G as shown allowing for seam.

35" 36" Fabric Without Nap
Size Large

View 3 APRON

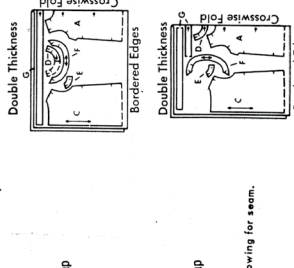
BORDERED FABRIC (CUT CROSSWISE)

35" 36" Fabric Without Nap
All Sizes

NOTE: Cut 1 D.

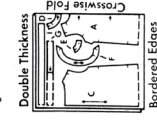
44" 45" Fabric Without Nap
Size Small, Medium

NOTE: Piece G as shown, allowing for seam.



41" 42" Fabric Without Nap
Size Small, Medium

NOTE: Piece G as shown allowing for seam.



PLAIN FABRIC (CUT LENGTHWISE)

44" 45" Fabric Without Nap
Size Small

NOTE: Piece G as shown allowing for seam.

44" 45" Fabric Without Nap
Size Medium

41" 42" Fabric Without Nap
Size Small

NOTE: Piece G as shown allowing for seam.

44" 45" Fabric Without Nap
Size Large

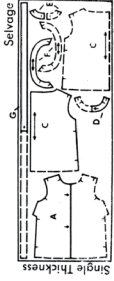
41" 42" Fabric Without Nap
Size Medium

41" 42" Fabric Without Nap
Size Large

35" 36" Fabric Without Nap
Size Small, Medium

NOTE: Piece G as shown allowing for seam.

35" 36" Fabric Without Nap
Size Large



80% COTTON WITH **SYLKO** TRIKO

WHEN IT'S FOR PURPOSE-PROOF FABRICS

Products of **ENGLISH SEWING COTTON CO LTD**

a zip?

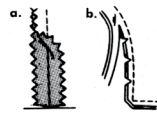
There is a Lightning zip just perfect for every pattern. Look for the Lightning Colourpacks. **LIGHTNING** - THE RELIABLE ZIP

5763

SHADED AREA IS RIGHT SIDE OF FABRIC

SUGGESTED SEAM FINISHES

- a-Pink seams.
- b-For enclosed seam, trim seam and corners; clip curves.

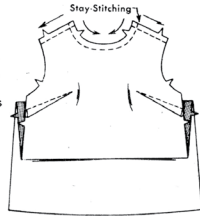


NOTE: Apron may be made with or without belt carriers.

APRON VIEW 1

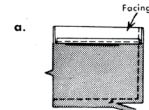
UNIT 1 - FRONT

To make underarm darts, on INSIDE, fold along solid lines. Stitch along broken lines. Press darts down.

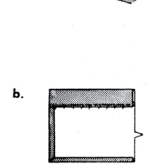


UNIT 2 - POCKETS

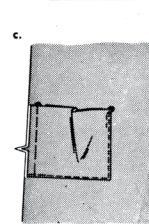
a-Stitch under 1/4" on upper edge of pocket. Turn upper edge to OUTSIDE along fold line, forming facing.



Machine-stitch along seam line on unnotched edges; trim unnotched edges to 1/4".



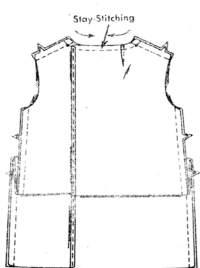
b-Turn facing to INSIDE, turning under unnotched edges along seam line; press. Slip-stitch facing in place.



c-On OUTSIDE, pin pockets to front along pocket lines, placing upper edge at medium dots ●, having remaining raw edges even, as shown. Baste raw edges together. Stitch pocket in place close to side and lower edges, reinforcing stitching at upper corner, as shown.

UNIT 3 - BACK AND SEAMS

To make neck dart, on INSIDE, fold along solid line. Stitch 1/8" from fold at neck edge tapering to nothing at lower end. Press dart toward center. Stitch under 1/4" on back edge.

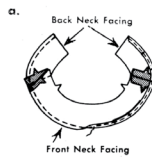


Join front unit to back unit at shoulder seams, matching small dots ●, easing back to fit between small dot ● and notches.

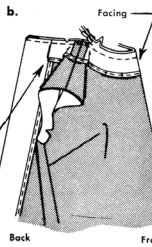
Join side seams.

UNIT 4 - BACK AND NECK FACINGS

a-Join front neck facing to back neck facings at shoulder seams. Machine-stitch 1/4" from long unnotched edge; press under edge along stitching and stitch.



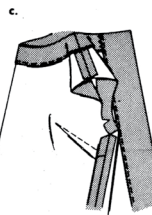
b-Turn back edges to OUTSIDE along fold lines, forming facings; baste to neck edge.



With RIGHT sides together, pin facing to neck edge, matching centers front and shoulder seams, lapping back facings. Stitch entire neck edge.

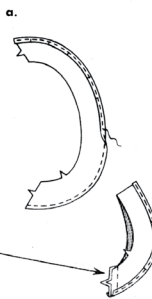
Trim seam and corners; clip curves.

c-Turn facings to INSIDE; press. Tack facing to shoulder seams. Slip-stitch back facings together, as shown.



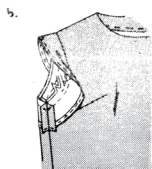
UNIT 5 - ARMHOLE FACINGS

a-Machine-stitch 1/4" from long unnotched edge of armhole facing. Press under edge along stitching and stitch.



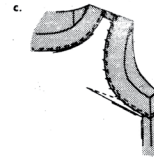
Join ends of facing.

b-With RIGHT sides together, stitch facing to armhole edge, matching seams.



Trim seam; clip curves.

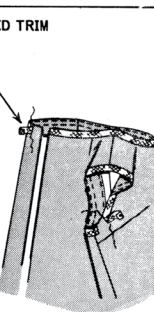
c-Turn facing to INSIDE; press.



Slip-stitch facing in place.

BRAID TRIM

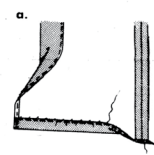
On OUTSIDE, pin braid to apron along neck edge, turning under ends at back opening edges, as shown. As you pin braid in place, stretch outer curve and ease in fullness on inner curve. Sew both edges of braid in place by machine.



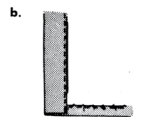
On OUTSIDE, pin braid to armhole edges, turning and lapping one end at underarm, as shown. As you pin braid in place, stretch outer curve and ease in fullness on inner curve. Sew both edges of braid in place by machine.

HEM

a-Mark length. Open out facings at lower edge of back. Turn up lower edge along marking; press. Mark depth of hem; trim evenly. Stitch under 1/4" on raw edge. Slip-stitch hem in place, easing in fullness.



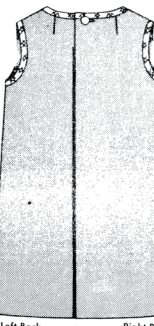
b-Turn back facings to INSIDE; press. Slip-stitch facings to hem.



FINISHING

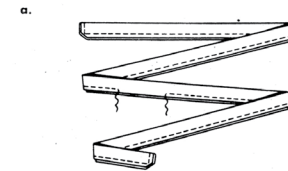
Make worked or machine buttonhole in RIGHT back. (For the machine buttonhole, stitch over buttonhole twice.)

Lap RIGHT back over LEFT, matching centers; sew button under buttonhole.

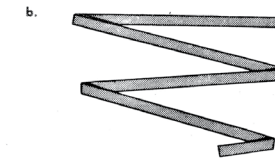


Left Back Right Back

TIE BELT



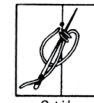
a-Fold belt in half, lengthwise, RIGHT sides together. Stitch in 3/8" seam, leaving an opening to turn. Trim seam and corners.



b-Turn belt; press. Slip-stitch opening edges together.

BELT CARRIERS

Make belt carrier at each side seam between small dots ●, as shown.



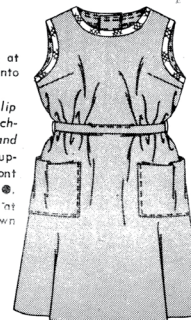
To make belt carrier, take several barstitches in fabric at upper small dot ●. Push eye end of needle thru bar, forming a loop and work chain-stitch, as shown.

Finish by pulling the thread all the way thru the last loop. Fasten to fabric at lower small dot ● with several barstitches, as shown.

Chain-stitch may be crocheted.

Belt may be worn at waistline and tied into a bow at center front.

If you prefer, slip belt thru carriers, matching centers front and small dots ●. Stitch upper edge of belt to front between small dots ●. Tie belt into a bow at center back, as shown on front of envelope.

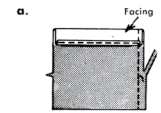


APRON VIEW 2

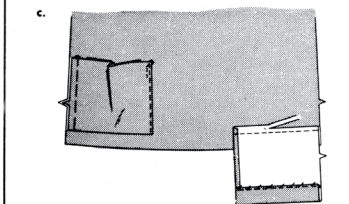
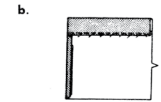
Prepare Apron same as for VIEW 1, see Unit 1.

UNIT 2 - POCKETS

a-Stitch under 1/4" on upper edge of pocket. Turn upper edge to OUTSIDE along fold line, forming facing. Machine-stitch along seam line on unnotched side edge; trim to 1/4".



b-Turn facing to INSIDE, turning under stitched edge along seam line; press. Slip-stitch facing in place.

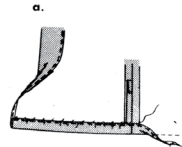


c-With RIGHT sides together, pin seam line at lower edge of pocket along lower pocket line in front. Stitch along seam line. Trim raw edge of pocket, as shown. Press pocket up and pin along remaining pocket lines, placing upper edge at medium dots ●, having raw edges even, as shown. Baste raw edges together. Stitch close to side edge, reinforcing stitching at upper corner, as shown.

Continue same as for VIEW 1, see Unit 3 thru step c in Unit 5.

HEM

a-Open out facings at lower edge of back. Turn up lower edge to form hem; press. Stitch under 1/4" on lower edge. Slip-stitch hem in place, easing in fullness and being careful not to catch in pockets.



b-Turn back facings to INSIDE; press. Slip-stitch facings to hem.



For FINISHING, TIE BELT and BELT CARRIERS, make same as for VIEW 1, see Unit 5.

APRON VIEW 3

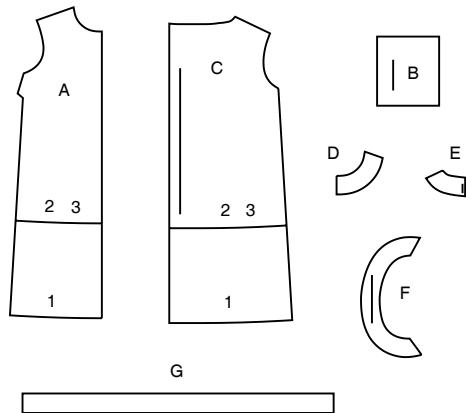
Make same as for VIEW 1, see Units 1 thru 5, omitting POCKETS.



Thank you for purchasing this Simplicity pattern. We made every effort to provide you with a high quality product.

SUPPLEMENTAL CUTTING LAYOUTS

7 PIECES



A FRONT
 B POCKET - VIEW 1, 2
 C BACK
 D FRONT NECK FACING
 E BACK NECK FACING
 F ARMHOLE FACING
 G TIE BELT

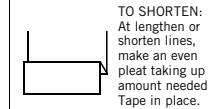
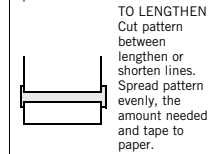
General Directions

The Pattern

- SYMBOLS**
- ↔ GRAIN LINE Place on straight grain of fabric parallel to selvage
 - ⇄ PLACE SOLID LINE on fold of fabric.
 - CENTER FRONT OR BACK of garment.
 - ∇∇∇ NOTCHES
 - O DOTS
 - CUTTING LINE
 - ==== LENGTHEN OR SHORTEN LINES

SEAM ALLOWANCE: 5/8" (1.5cm) unless otherwise stated is included but not printed on MULTI-SIZE PATTERNS. Mark your size with colored felt tip pen. See chart on tissue for how to use MULTI-SIZE PATTERNS.

ADJUST IF NEEDED
 Make adjustments before placing pattern on fabric.



When lengthen or shorten lines are not given, make adjustments at lower edge of pattern.

Cutting/Marking

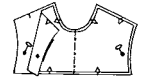
BEFORE CUTTING:
 PRESS pattern pieces with a warm dry iron. PRE-SHRINK fabric by pre-washing washables or steam-pressing non-washables.

CIRCLE your cutting layout.
 PIN pattern to fabric as shown in Cutting Layouts.

- FOR DOUBLE THICKNESS: Fold fabric with RIGHT sides together.
- FOR SINGLE THICKNESS: Place fabric RIGHT side up.
- FOR PILE, SHADED OR ONE WAY DESIGN FABRICS: Use "with nap" layouts

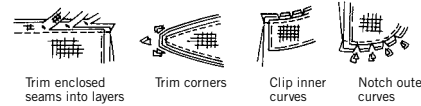
AFTER CUTTING:
 Transfer markings to WRONG side of fabric before removing pattern. Use pin and chalk method or dressmaker's tracing paper and wheel.

- To Quick Mark:**
- Snip edge of fabric to mark notches, ends of fold lines and center lines.
 - Pin mark dots.



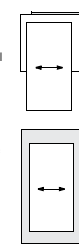
Sewing

- SEW garment following **Sewing Directions**.
- PIN or machine-baste seams matching notches.
- STITCH 5/8" (1.5 cm) seams unless otherwise stated.
- PRESS seams open unless otherwise indicated clipping when necessary so seams will lie flat.
- TRIM seams to reduce bulk, as shown below.



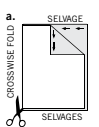
SPECIAL CUTTING NOTES

★ If layout shows a piece extending past fold, cut out all pieces except piece that extends.

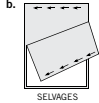


Open out fabric to single thickness. Cut extending piece on RIGHT side of fabric in position shown.

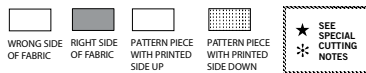
✳ Mark small arrows along both selvages indicating direction of nap or design. Fold fabric crosswise with RIGHT sides together, and cut along fold (a).



Turn one fabric layer around so arrows on both layers go in the same direction. Place RIGHT sides together (b).



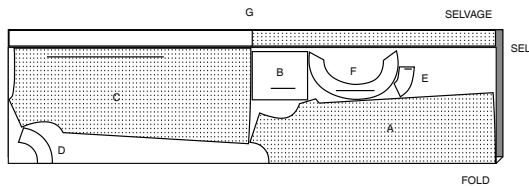
Cutting Layouts



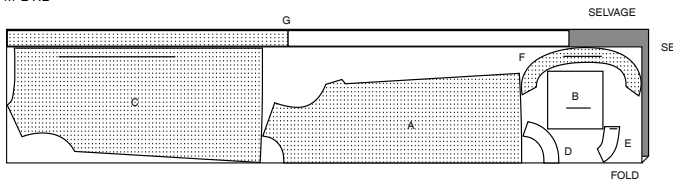
POSITION OF PATTERN PIECES MAY VARY SLIGHTLY ACCORDING TO YOUR PATTERN SIZE

VIEW 1 - APRON
 USE PIECES A B C D E F G

45" (115CM) WITH NAP
 SIZE XS

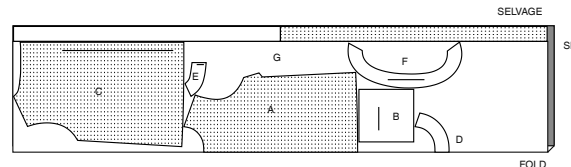


45" (115CM) WITH NAP
 S M L XL



VIEW 2 - APRON (LENGTHWISE STRIPED OR PLAIN FABRIC)
 USE PIECES A B C D E F G

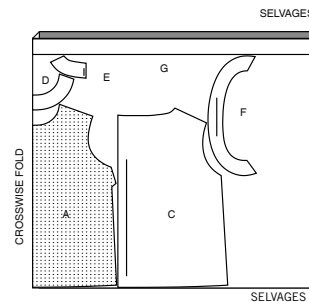
45" (115CM) WITH NAP
 ALL SIZES



NOTE: FOR BORDER PRINTED FABRICS FOLLOW CUTTING LAYOUT, MOVE PIECES UP OR DOWN TO DESIRED POSITION OF BORDER ON GARMENT AND ALLOW FOR CORRECT HEM ALLOWANCE.

VIEW 3 - APRON (BORDERED FABRIC - CUT CROSSWISE)
 USE PIECES A C D E F G

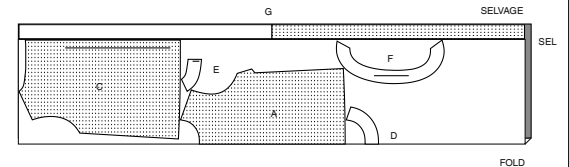
45" (115CM) WITH NAP
 ALL SIZES



VIEW 3 - APRON (PLAIN FABRIC - CUT LENGTHWISE)

USE PIECES A C D E F G

45" (115CM) WITH NAP
 ALL SIZES





Congrats!

You've completed your sewing adventure

**SHARE
YOUR** LOOK



Post your pattern and tag us
@simplicity_creative_group and **#simplicitypatterns**
for a chance to be featured on our social media.

Look for more PDF patterns at [simplicity.com](https://www.simplicity.com)

Have a question or need help with your sewing project call us at
1-888-588-2700



Simplicity ©2023 a division of IG Design Group Americas Inc. • Atlanta, GA 30342 USA www.thedesigngroup.com • All Rights Reserved. www.simplicity.com • Made in the U.S.A. Fabriqué aux États-Unis.

To be used for individual private home use only and not for commercial or manufacturing purposes. • A usage privé seulement et non à des fins commerciales ou de production en série. • Para uso privado solamente, no se puede utilizar con propósitos de comercialización o de producción en serie.