

S9896

Simplicity



Average

UNISEX JACKET IN TWO LENGTHS

Suggested Fabrics: A,B: Cotton Blends, Denim, Fleece, Ponte, Scuba, Stretch Wovens.

A,B Contrast 1: Cotton Blends, Lightweight Denim, Microsuede, Ripstop Nylon. **A,B Contrast 2:** Cotton Blends, Double-Faced Pre-quilted Fabric (optional), Fleece, Microsuede, Rip-stop Nylon.

Batting: Cotton Blends, Polyester Blends. **Interfacing:** Lightweight Fusible.

Notions: A,B: Two 7" (18cm) zippers (cut to fit), one 12" (30cm) zipper (cut to fit), one pkg. of ¼" (6mm) double-fold bias tape. **Also for A:** One 5" (13cm) zipper (cut to fit), eight ¾" (1.5cm) heavy-duty snaps. **Also for B:** Nine ¾" (1.5cm) heavy-duty snaps.

Sizes	XS	S	M	L	XL	XXL
	30-32	34-36	38-40	42-44	46-48	50-52

BODY MEASUREMENTS: Select pattern size based on body measurements

	XS	S	M	L	XL	XXL	Ins.
Chest	30-32	34-36	38-40	42-44	46-48	50-52	"
Waist	26-27	28-30	32-34	36-39	42-44	46-48	"
Hip	32-34	35-37	39-41	43-45	47-49	51-53	"

A,B Contrast 2 (Upper Sleeve in pre-quilted fabric) - 42, 45** - 1½ yds.

A,B Contrast 2 (Quilt Your Own Upper Sleeve) - 45" - 2¼ yds.; 60" - 2¼ yds.

Batting A,B (Quilt Your Own) - one pkg. of 45" x 60"

Jacket A	45** - 2¼ yds.;	60** - 2¼ yds.
Contrast 1 (Pockets, Front Band, Collar)	45, 60**	¾
Interfacing	20" - 1¼ yds.	

Jacket B	45**	2¼	2¼	2¼	2¼	2¼	2¼	Yds.
	60**	1½	1½	1½	1½	1½	1½	"

Contrast 1 (Upper Front and Back, Pockets, Collar)	45**	¾	¾	¾	1	1	1	Yds.
	60**	¾ <td>¾</td> <td>¾</td> <td>¾</td> <td>¾</td> <td>¾</td> <td>"</td>	¾	¾	¾	¾	¾	"

Interfacing	20" - 1¼ yds.

NOTE: Please refer to the sewing instructions for **FINISHED GARMENT MEASUREMENTS**.

*with nap **without nap

Moins Facile

VESTE UNISEXE EN DEUX LONGUEURS

Tissus Conseillés: Veste A,B: Cotonnades, Denim, Molleton, Ponte, Scuba, Tissus tissés extensibles. **A,B Contraste 1:** Cotonnades, Denim léger, Microfibre, Nylon indéchirable.

A,B Contraste 2: Cotonnades, Tissu pré-matelassé double face (facultatif), Molleton, Microfibre, Nylon indéchirable. **Ouatine:** Cotonnades, Tissus mélangés de polyester. **Entoilage:** thermocollant léger.

Mercerie: A,B: 2 fermetures à glissière de 18cm (à ajuster), 1 fermeture à glissière de 30cm (à ajuster), 1 paquet de ruban de biais double de 6mm. **Aussi pour A:** 1 fermeture à glissière de 13cm (à ajuster), 8 boutons-pression résistants de 1.5cm. **Aussi pour B:** 9 boutons-pression résistants de 1.5cm.

Tailles Fr/ Eur	TP/XS	P/S	M	G/L	TG/XL	TTG/XXL
	40-42	44-46	48-50	52-54	56-58	60-62

MESURES DU CORPS: Choisissez la taille du patron basée sur les mesures du corps

Poitrine	76-81	87-92	97-102	107-112	117-122	127-132	cm
Taille	66-69	71-76	81-87	92-99	107-112	117-122	"
Hanches	82-87	89-94	99-104	109-115	119-124	128-135	"

A,B Contraste 2 (Manche supérieur en tissu pré-matelassé) - 107, 115cm* - 1.3m

A,B Contraste 2 (Quiltez votre propre manche supérieure) - 115cm* - 2.4m, 150cm* - 2.1m

Ouatine A,B (Quiltez votre propre) - 1 paquet de 115cm x 150cm

Veste A	115cm* - 2.4m,	150cm* - 2.1m
Contraste 1 (Poches, Bandes devant, Col)	115, 150cm*	0.6
Entoilage	51cm - 1.1m	

Veste B	115cm*	2.1	2.1	2.1	2.1	2.1	2.1	m
	150cm*	1.4	1.4	1.4	1.5	1.5	1.5	"

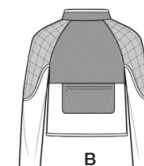
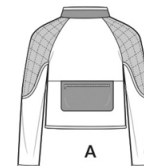
Contraste 1 (Devant et dos supérieur, Poches, Col)	115cm*	0.7	0.7	0.8	0.8	0.9	0.9	m
	150cm*	0.7	0.7	0.7	0.7	0.8	0.8	"

Entoilage	51cm - 1.3m

NOTE: S'il vous plaît, reportez-vous au instructions de couture pour les **MESURES DES**

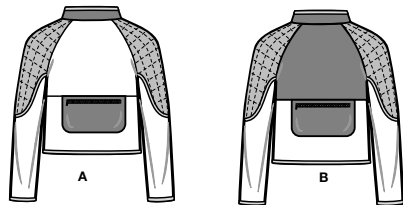
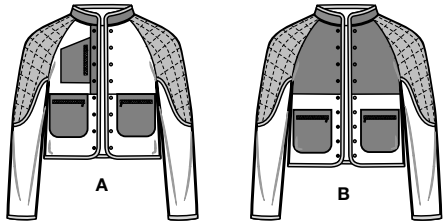
VÊTEMENTS FINI.

*avec sens **sans sens

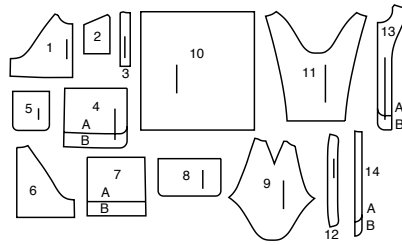


Simplicity®

Thank you for purchasing this Simplicity pattern. We made every effort to provide you with a high quality product.



14 PIECES



- 1 Upper Front-A,B
- 2 Upper Pocket-A
- 3 Front Band-A
- 4 Lower Front-A,B
- 5 Front Pocket-A,B
- 6 Upper Back-A,B
- 7 Lower Back-A,B
- 8 Back Pocket-A,B
- 9 Upper Sleeve
- 10 Guide for Quilting-A,B
- 11 Lower Sleeve-A,B
- 12 Collar-A,B
- 13 Front Facing-A,B
- 14 Guide for Snaps-A,B

General Directions

The Pattern

- SYMBOLS**
- GRAIN LINE Place on straight grain of fabric parallel to selvage
 - PLACE SOLID LINE on fold of fabric.
 - CENTER FRONT OR BACK of garment.
 - NOTCHES
 - DOTS
 - CUTTING LINE
 - LENGTHEN OR SHORTEN LINES

SEAM ALLOWANCE: 5/8" (1.5cm) unless otherwise stated is included but not printed on MULTI-SIZE PATTERNS. Mark your size with colored felt tip pen. See chart on tissue for how to use MULTI-SIZE PATTERNS.

ADJUST IF NEEDED
Make adjustments before placing pattern on fabric.

TO LENGTHEN:
Cut pattern between lengthen or shorten lines. Spread pattern evenly, the amount needed and tape to paper.

TO SHORTEN:
At lengthen or shorten lines, make an even pleat taking up amount needed. Tape in place.

When lengthen or shorten lines are not given, make adjustments at lower edge of pattern.

Cutting/Marking

BEFORE CUTTING:
PRESS pattern pieces with a warm dry iron. PRE-SHRINK fabric by pre-washing washables or steam-pressing non-washables.

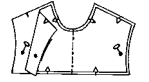
CIRCLE your cutting layout.
PIN pattern to fabric as shown in Cutting Layouts.

- FOR DOUBLE THICKNESS: Fold fabric with RIGHT sides together.
- FOR SINGLE THICKNESS: Place fabric RIGHT side up.
- FOR PILE, SHADED OR ONE WAY DESIGN FABRICS: Use "with nap" layouts

AFTER CUTTING:
Transfer markings to WRONG side of fabric before removing pattern. Use pin and chalk method or dressmaker's tracing paper and wheel.

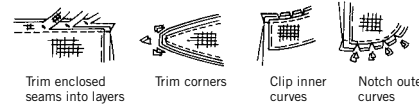
To Quick Mark:

- Snip edge of fabric to mark notches, ends of fold lines and center lines.
- Pin mark dots.



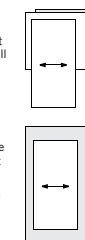
Sewing

- SEW garment following Sewing Directions.
- PIN or machine-baste seams matching notches.
- STITCH 5/8" (1.5 cm) seams unless otherwise stated.
- PRESS seams open unless otherwise indicated clipping when necessary so seams will lie flat.
- TRIM seams to reduce bulk, as shown below.

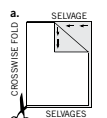


SPECIAL CUTTING NOTES

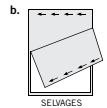
★ If layout shows a piece extending past fold, cut out all pieces except piece that extends.



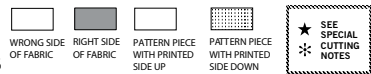
✱ Mark small arrows along both selvages indicating direction of nap or design. Fold fabric crosswise with RIGHT sides together, and cut along fold (a).



Turn one fabric layer around so arrows on both layers go in the same direction. Place RIGHT sides together (b).



Cutting Layouts



POSITION OF PATTERN PIECES MAY VARY SLIGHTLY ACCORDING TO YOUR PATTERN SIZE

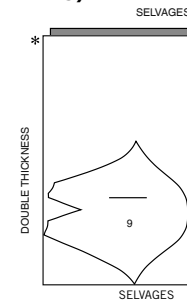
Sizes	XS	S	M	L	XL	XXL
European	4-6	8-10	12-14	16-18	20-22	24-26
	30-32	34-36	38-40	42-44	46-48	50-52

FINISHED GARMENT MEASUREMENTS (Includes Design and Wearing Ease)						
A,B Chest	40½	42½	46½	50½	54½	58½ Ins.
A,B Waist	41	43	47	51	55	59 "
Finished back length from base of neck						
Jacket A	21¼	21½	22	22½	23	23½ Ins.
Jacket B	24¼	24½	25	25½	26	26½ "

CONTRAST 2 A,B (PRE-QUILTED FABRIC)

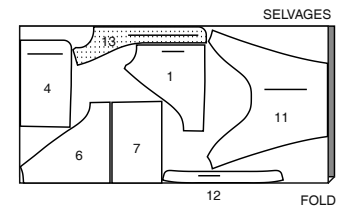
USE PIECES 9

42", 45" (107CM-115CM) WITH NAP ALL SIZES



60" (150CM) WITH NAP ALL SIZES

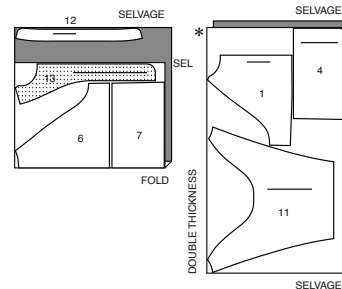
CUT ONE OF PIECE 12



JACKET A

USE PIECES 1 4 6 7 11 12 13

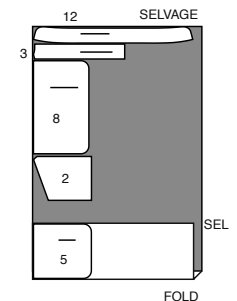
45" (115CM) WITH NAP ALL SIZES



CONTRAST 1 A

USE PIECES 2 3 5 8 12

45", 60" (115CM-150CM) WITH NAP ALL SIZES



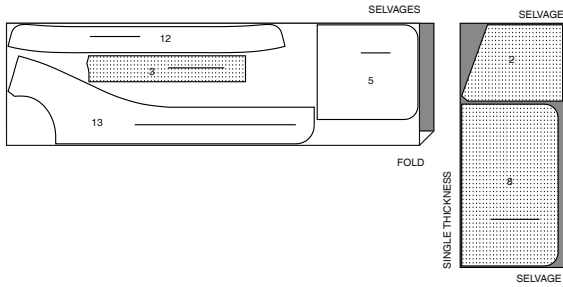
CUTTING LAYOUTS CONTINUED ON PAGE 2

INTERFACING A

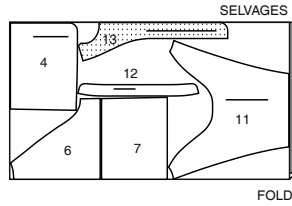
USE PIECES 2 3 5 8 12 13

20" (51CM)
ALL SIZES

CUT ONE OF PIECE 3



60" (150CM)
WITH NAP
ALL SIZES

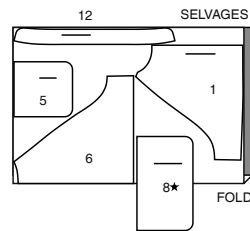


CONTRAST 1 B

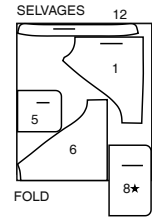
USE PIECES 1 5 6 8 12

45" (115CM)
WITH NAP
ALL SIZES

CUT ONE OF PIECE 12



60" (150CM)
WITH NAP
ALL SIZES

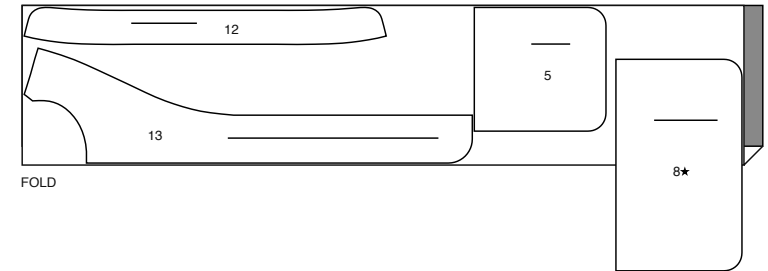


INTERFACING B

USE PIECES 5 8 12 13

20" (51CM)
ALL SIZES

SELVAGES

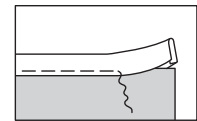
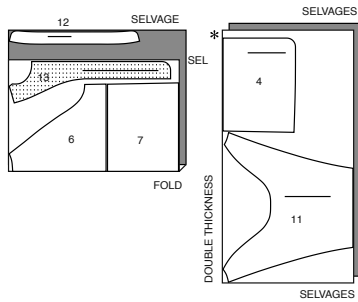


JACKET B

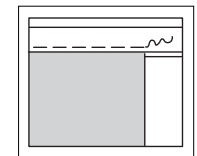
USE PIECES 4 6 7 11 12 13

45" (115CM)
WITH NAP
ALL SIZES

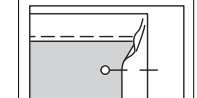
CUT ONE OF PIECE 12



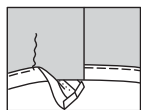
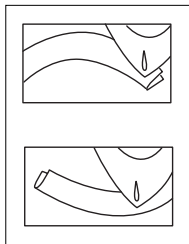
BINDING



CURVES

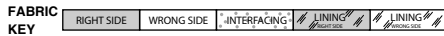


CORNERS



ENDS

Sewing Directions



Read **General Directions** on page 1 before you begin.

GLOSSARY OF SEWING METHODS

Sewing methods shown in **BOLD** are defined below:

BINDING - To finish edge of garment, slip the edge between the folds of the bias tape placing the raw edge against the center crease and the wider folded edge of the tape on the inside of the garment. Stitch the tape in place from the outside, being sure to catch in the folded edge on the inside.

Curves:

If tape is applied to a curved surface, first, preshape it with a steam iron. For an inward curve, stretch the double edges and press; for an outward curve, stretch the fold edge and press.

TIP: Place tape along the pattern tissue and then follow instructions.

Corners:

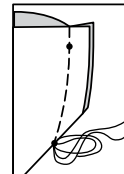
Encase one edge all the way to raw edge of fabric. Raise presser foot and cut the thread. Wrap tape around and pin in place.

Fold tape diagonally on both sides of corner; lower needle into diagonal fold and stitch the remaining side.

Ends:

Turn tape ends under to finish or enclose in the seam when possible.

When tape completely encloses an edge, arrange to have ends meet at seam; then turn both ends under where they meet and tack together invisibly after stitching on tape.



DART SEAM

SEWING TUTORIALS



Build your skills viewing short, easy-to-follow videos at simplicity.com/sewingtutorials

DART SEAM - To make dart seam in garment, with **RIGHT** sides together, bring broken lines together, matching small dots. Stitch dart seam from outer edge to point.

TIP - To prevent a "bubble" at the point, make the last few stitches right on the fold and leave the thread ends long enough to tie a knot. **DO NOT** back-stitch at the point.

Press the dart flat along the stitching to "blend" the stitches, then press dart as indicated in the Sewing Directions.

Sewing methods in **BOLD TYPE** have Sewing Tutorial Video available. Scan QR CODE to watch videos:

EDGESTITCH - see **Machine Stitches: "how to edgestitch"** video.

SLIP STITCH - see **Hand Stitching: "how to slip stitch"** video.

STAYSTITCH - see **Machine Stitches: "how to do stay-stitching"** video.

INTERFACE - Pin interfacing to **WRONG** side of fabric. Fuse interfacing in place following manufacturer's directions.

PATTERN PIECES WILL BE IDENTIFIED BY NUMBERS THE FIRST TIME THEY ARE USED.

STITCH SEAMS WITH RIGHT SIDES TOGETHER UNLESS OTHERWISE STATED.

S9896

3 of 4

JACKET A, B

NOTE: View A will be shown, unless otherwise mentioned.

FRONT AND BACK

- View B:** Pin wrong side of UPPER FRONT (1) and UPPER BACK (6) cut from CONTRAST to right side of upper front and upper back cut of FABRIC. Baste raw edges together.

POCKETS AND ZIPPERS

- INTERFACE FRONT POCKET (5), and BACK POCKET (8).**
View A: INTERFACE UPPER POCKET (2).

- To reinforce zipper openings, stitch along broken lines on pockets, pivoting with needle in fabric at corners. Slash pocket along solid line between stitching to within 3/8" (1cm) of ends. Clip diagonally to inner corners, being careful not to clip through stitching.

- Press under clipped edges and ends.

- Hand-sew upper ends of zipper tape together.
NOTE: It may become necessary to adjust the length of your zipper. Measure the zipper opening less 1/4" (6mm). Close the zipper and measure from the tab down along the teeth to the length needed. Mark new length. With matching buttonhole twist or heavy duty thread, make several overcast stitches across zipper teeth at marking. Trim away lower end of zipper to within 5/8" (1.5cm) of overcast stitches.

- With right sides up, center opening edges of pocket over closed zipper, placing tab end at upper edge of upper pocket (VIEW A), to left side of back pocket, and on opposite sides of front pocket. Slip-baste pressed opening edges to zipper tape to temporarily hold the layers together.

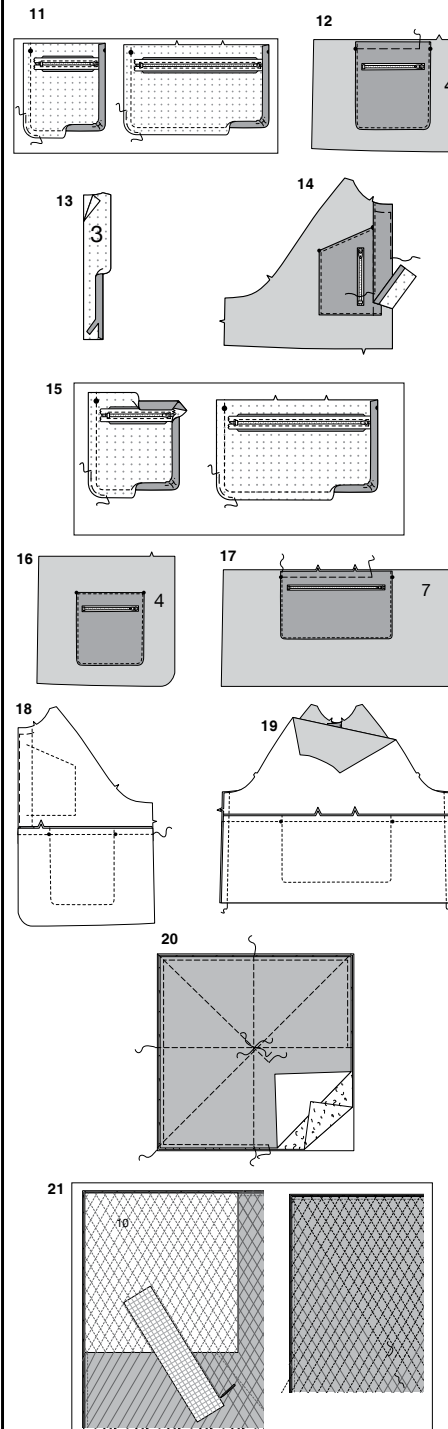
- Fold back upper edge of pocket and stitch to zipper tape along reinforcement stitching between clips, using a zipper foot. Fold back lower edge of pocket and stitch to remaining zipper tape in same manner. Press seam toward pocket, away from zipper.

- Pin ends of zipper tape and clipped corners together. Stitch across ends along stitching line.

VIEW A

- Press under upper and lower edges of upper pocket along seamlines. Press under side edge of pocket with small dot, folding in corners diagonally.

- Pin upper pocket to right UPPER FRONT (1) along placement lines, matching large and small dots. **EDGESTITCH** close to pressed edges. Baste along seamline on raw edge.



- Stitch along seam line on sides and lower edges of front and back pockets. To ease curved edge of pockets, stitch 1/4" (6mm) from raw edge, inside the seam allowance, using a long machine-stitch. Press under sides and lower edges along stitching. Pull up ease stitches to shape the curve. To eliminate bulk, notch out the fullness in the seam allowance along the curves as far as the ease stitches, if desired.

- Pin front pockets to LOWER FRONT (4), matching large dots, having upper edges even, with pull tab on zippers towards front edge. **EDGESTITCH** sides and lower edges. Baste upper edge.

- INTERFACE FRONT BAND (3).** Press under seam allowance on long edge of front band. Trim pressed seam allowance to 3/8" (1cm).

- Pin front band to upper front, having raw edges even and pressed edge covering seam allowance on upper pocket on right front. Stitch close to pressed edge of front band. Baste raw edges together.

CONTINUE AS FOLLOWS FOR VIEWS A AND B

- Stitch along seam line on sides and lower edges of front and back pockets. To ease curved edge of pockets, stitch 1/4" (6mm) from raw edge, inside the seam line, using a long machine-stitch. Press under upper edge of front pocket along seam line. Press under sides and lower edges of front and back pockets along stitching. Pull up ease stitches to shape the curve. To eliminate bulk, notch out the fullness in the seam allowance along the curves as far as the ease stitches, if desired.

- Pin front pockets to LOWER FRONT (4), matching large dots, with pull tab on zippers towards front edge. **EDGESTITCH** close to upper, sides and lower edges.

- Pin back pocket to LOWER BACK (7) along placement line, matching large dots, having upper raw edges even. **EDGESTITCH** sides and lower edges. Baste upper edge.

- Pin upper front and lower front together matching notches. Stitch. Press seam toward upper front.

- Pin upper back and lower back together matching notches. Stitch. Press seam toward upper back. Stitch front and back together at sides.

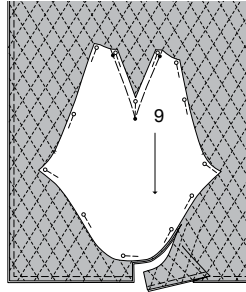
SLEEVES

NOTE: Disregard quilting instructions if using optional pre-quilted fabric.

- To prepare fabric for quilting, cut 2 sections 45" x 45" (115cm x 115cm) for 45" (115cm) fabric or 60" x 40" (150cm x 115cm) for 60" (150cm) fabric. Having wrong sides of fabric together, insert a layer of batting between the fabrics. Trim batting even with fabric edges. Baste. To prevent layers from shifting, beginning at center, baste along lengthwise and crosswise grains, smoothing fabric as you go, leaving ends free for easy removal. Beginning at center, baste diagonally to each corner.

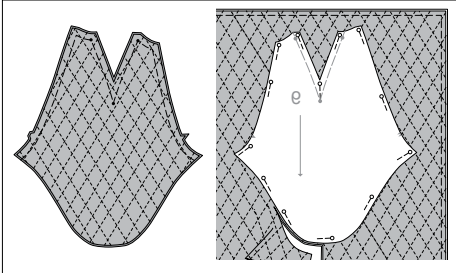
- Place **GUIDE FOR QUILTING (10)** into one corner of fabric. For quilting, transfer stitching lines to right side of fabric. Stitch along marked lines. Stitch again 2" (5cm) from the first stitching. Continue stitching rows along body of fabric, spacing each 2" (5cm) apart until entire section is covered.

22



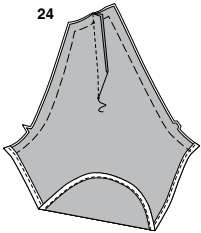
22. Pin UPPER SLEEVE GUIDE (9) pattern tissue face UP on quilted upper sleeve section and cut out.

23



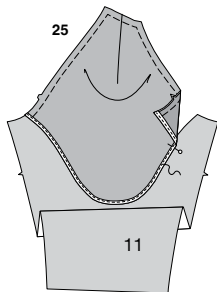
23. Pin upper sleeve guide pattern tissue face DOWN on remainder of quilted upper sleeve section and cut out. Baste raw edges. For clarity purposes, quilting will not be shown in following illustrations.

24



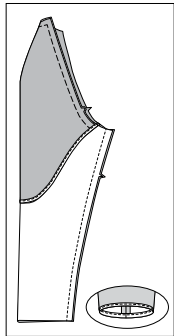
24. Stitch DART SEAM in upper sleeve. Finish lower edge of sleeve with BINDING.

25



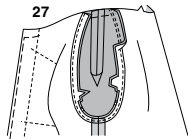
25. Lap finished edge of upper sleeve over upper edge of LOWER SLEEVE (11), placing stitching on binding along seamline. Baste. Stitch along previous stitching on binding.

26



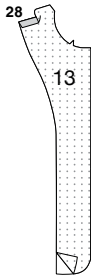
26. Stitch underarm seam of sleeve. Finish lower edge of sleeve with BINDING.

27



27. Pin sleeve to armhole edge, right sides together, matching notches and underarm seams. Stitch. Stitch again 1/4"(6mm) away in seam allowance. Trim seam close to second stitching below notches. Press seam toward front and back.

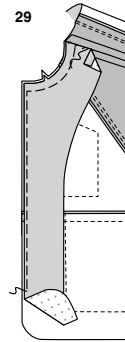
28



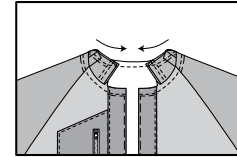
FACING AND COLLAR

28. INTERFACE FRONT FACING (13). Press under 5/8"(1.5cm) seam allowance on shoulder edge of front facing.

29



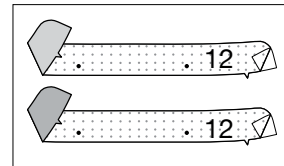
30



29. With wrong sides together, pin facing to jacket, matching notches, having raw edges even and pressed edge of facing at dart seam on sleeve. Baste front and lower edges close to raw edges. Baste neck edge along seamline. SLIPSTITCH pressed edge of facing to dart seam.

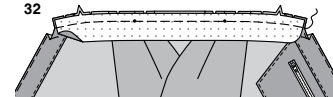
30. STAY-STITCH neck edge.

31



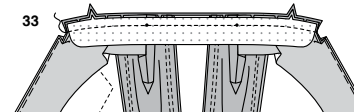
31. INTERFACE COLLAR (12) sections.

32



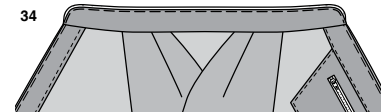
32. Pin CONTRAST collar to neck edge of jacket, right sides together, matching notches and small dots, clipping neck edge of jacket to staystitching, as needed. Baste.

33



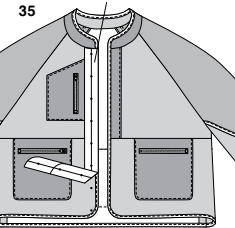
33. Pin right side of remaining collar to wrong side of jacket, over facing, matching notches and small dots. Baste. Stitch. Trim.

34



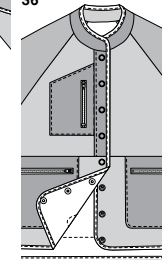
34. Press collars up encasing seam. Baste close to raw edges.

14



35. Finish raw edges of jacket with BINDING. Place GUIDE FOR SNAPS (14) on right front having upper edge at neck seam, matching center fronts. Transfer markings.

36



36. For Snaps: Apply socket section of snaps to outside of right front at markings, following manufacturer's directions. Apply knob halves of snaps to left front under socket sections of snaps.



Congrats!

You've completed your sewing adventure

SHARE YOUR LOOK



Post your pattern and tag us
@simplicity_creative_group and **#simplicitypatterns**
for a chance to be featured on our social media.

Look for more PDF patterns at [simplicity.com](https://www.simplicity.com)

Have a question or need help with your sewing project call us at
1-888-588-2700



Simplicity ©2023 a division of IG Design Group Americas Inc. • Atlanta, GA 30342 USA www.thedesigngroup.com • All Rights Reserved. www.simplicity.com • Made in the U.S.A. Fabriqué aux États-Unis.

To be used for individual private home use only and not for commercial or manufacturing purposes. • A usage privé seulement et non à des fins commerciales ou de production en série. • Para uso privado solamente, no se puede utilizar con propósitos de comercialización o de producción en serie.