

S9893

miG A DIY & LIFESTYLE BRAND



Simplicity

Designed and printed in USA.

Average

MISSES' CAPE

Suggested Fabrics: Broadcloth, Cotton Blends, Denim, Lightweight Wool Types, Linen Blends, Gabardine, Stretch Wovens, Tweed, Twill. **Lining:** Cotton Blends, Polyester Blends. **Interfacing:** Lightweight Fusible.

Notions: Thirteen ¾" (2cm) buttons.

Sizes	XS	S	M	L	XL	XXL
	4-6	8-10	12-14	16-18	20-22	24-26
European	30-32	34-36	38-40	42-44	46-48	50-52

BODY MEASUREMENTS: Select pattern size based on body measurements

Bust	29½-30½	31½-32½	34-36	38-40	42-44	46-48	Ins.
Waist	22-23	24-25	26½-28	30-32	34-37	39-41½	"
Hip-9" below waist	31½-32½	33½-34½	36-38	40-42	44-46	48-50	"
Back-neck to waist	15¼-15½	15¾-16	16¼-16½	16¾-17	17¼-17½	17¾-18	"

Cape	45**	45%	4¾	5	5¼	5½	5%	Yds.
	60**	3	3%	3%	3%	4¼	4%	"
Lining	45***	2%	2%	2¼	2%	3	3	Yds.

Interfacing 20"- 1½ yds.

FINISHED GARMENT MEASUREMENTS (Includes Design and Wearing Ease)

Finished back length from base of neck							
Cape	20½	21	21½	22	22½	23	Ins.

*with nap **without nap

Moins Facile

CAPE POUR JEUNES FEMMES

Tissus Conseillés: Broadcloth, Cottonnades, Denim, Sortes de laine légère, Toile de lin mélangé, Gabardine, Tissus tissés extensibles, Tweed, Twill. **Doubleure :** Cottonnades, Tissus mélangés de polyester. **Entoilage :** thermocollant léger.

Mercerie: 13 boutons de 2cm.

Tailles	TP/XS	P/S	M/M	G/L	TG/XL	TTG/XXL
Françaises	32-34	36-38	40-42	44-46	48-50	52-54
Européen	30-32	34-36	38-40	42-44	46-48	50-52

MESURES DU CORPS: Choisissez la taille du patron basée sur les mesures du corps

Poitrine	75-77	80-83	87-92	97-102	107-112	117-122	cm
Taille	56-58	61-64	67-71	76-81	87-94	99-105	"

Hanches (23cm au-dessous de la taille)

	80-83	85-88	92-97	102-107	112-117	122-127	cm
Dos du cou à la taille	39-39,5	40-40,5	41,5-42	42,5-43	44-44,5	45-45,5	"

Cape	115cm*	4.1	4.3	4.6	4.8	4.9	5.1	m
	150cm*	2.7	2.9	3.5	3.5	3.9	4.2	"

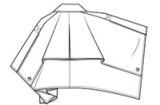
Doubleure	115cm**	1.9	1.9	1.9	2.6	2.7	2.7	m
Entoilage	51cm- 1.5m							

MESURES DES VÊTEMENTS FINI (Motif et aisance de port compris)

Longueur finie – dos, votre nuque à l'ourlet

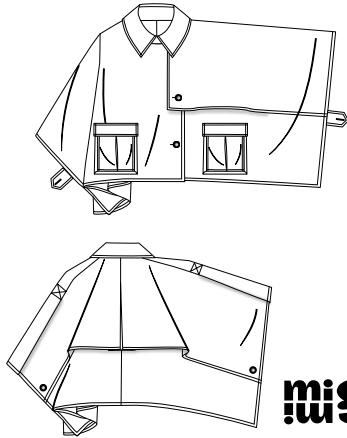
Cape	52	53	55	56	57	58	cm
-------------	----	----	----	----	----	----	----

*avec sens **sans sens



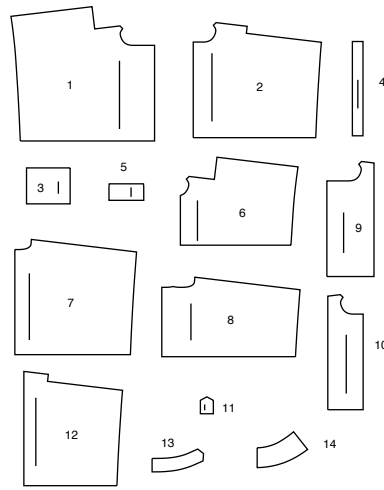
Simplicity®

Thank you for purchasing this Simplicity pattern. We made every effort to provide you with a high quality product.



miG A DIY & LIFESTYLE BRAND

14 PIECES



- 1 RIGHT FRONT
- 2 LEFT FRONT
- 3 POCKET
- 4 GUSSET
- 5 FLAP
- 6 FRONT OVERLAY
- 7 BACK
- 8 BACK OVERLAY
- 9 RIGHT FRONT FACING
- 10 LEFT FRONT FACING
- 11 TAB
- 12 FRONT LINING
- 13 COLLAR BAND
- 14 COLLAR

General Directions

The Pattern

- SYMBOLS**
- GRAIN LINE Place on straight grain of fabric parallel to selvage
 - PLACE SOLID LINE on fold of fabric.
 - CENTER FRONT OR BACK of garment.
 - NOTCHES
 - DOTS
 - CUTTING LINE
 - LENGTHEN OR SHORTEN LINES

SEAM ALLOWANCE: 5/8" (1.5cm) unless otherwise stated is included but not printed on MULTI-SIZE PATTERNS. Mark your size with colored felt tip pen. See chart on tissue for how to use MULTI-SIZE PATTERNS.

ADJUST IF NEEDED
Make adjustments before placing pattern on fabric.

TO LENGTHEN:
Cut pattern between lengthen or shorten lines. Spread pattern evenly, the amount needed and tape to paper.

TO SHORTEN:
At lengthen or shorten lines, make an even pleat taking up amount needed. Tape in place.

When lengthen or shorten lines are not given, make adjustments at lower edge of pattern.

Cutting/Marking

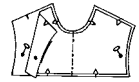
BEFORE CUTTING:
PRESS pattern pieces with a warm dry iron. PRE-SHRINK fabric by pre-washing washables or steam-pressing non-washables.

CIRCLE your cutting layout.
PIN pattern to fabric as shown in Cutting Layouts.

- FOR DOUBLE THICKNESS: Fold fabric with RIGHT sides together.
- FOR SINGLE THICKNESS: Place fabric RIGHT side up.
- FOR PILE, SHADED OR ONE WAY DESIGN FABRICS: Use "with nap" layouts

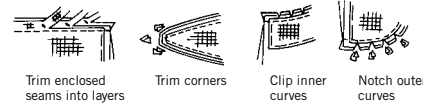
AFTER CUTTING:
Transfer markings to WRONG side of fabric before removing pattern. Use pin and chalk method or dressmaker's tracing paper and wheel.

- To Quick Mark:**
- Snip edge of fabric to mark notches, ends of fold lines and center lines.
 - Pin mark dots.



Sewing

- SEW garment following **Sewing Directions**.
- PIN or machine-baste seams matching notches.
- STITCH 5/8" (1.5 cm) seams unless otherwise stated.
- PRESS seams open unless otherwise indicated clipping when necessary so seams will lie flat.
- TRIM seams to reduce bulk, as shown below.



SPECIAL CUTTING NOTES

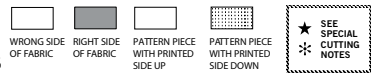
★ If layout shows a piece extending past fold, cut out all pieces except piece that extends.

Open out fabric to single thickness. Cut extending piece on RIGHT side of fabric in position shown.

✳ Mark small arrows along both selvages indicating direction of nap or design. Fold fabric crosswise with RIGHT sides together, and cut along fold (a).

Turn one fabric layer around so arrows on both layers go in the same direction. Place RIGHT sides together (b).

Cutting Layouts

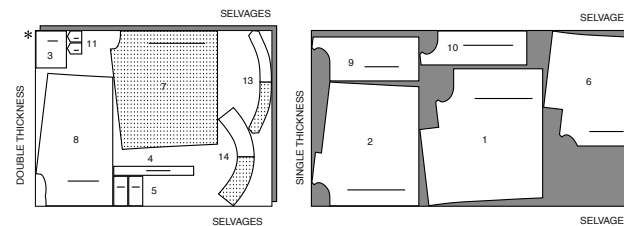


POSITION OF PATTERN PIECES MAY VARY SLIGHTLY ACCORDING TO YOUR PATTERN SIZE

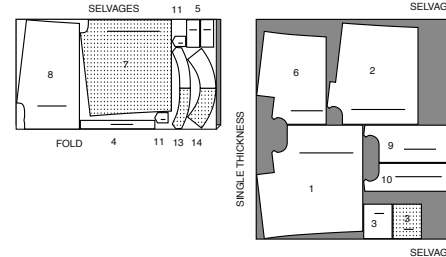
CAPE

USE PIECES 1 2 3 4 5 6 7 8 9 10 11 13 14

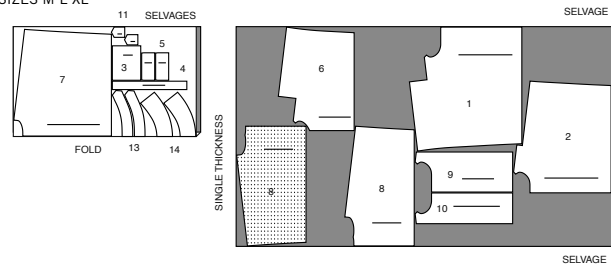
45" (115CM) WITH NAP ALL SIZES



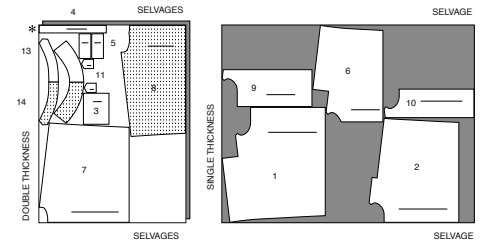
60" (150CM) WITH NAP SIZES XS S



60" (150CM) WITH NAP SIZES M L XL



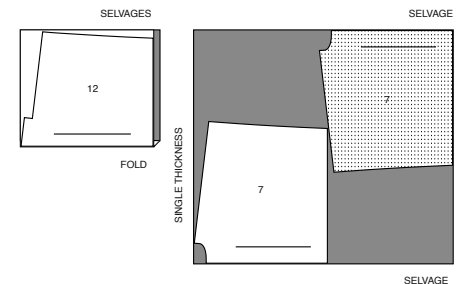
60" (150CM) WITH NAP SIZES XXL



LINING

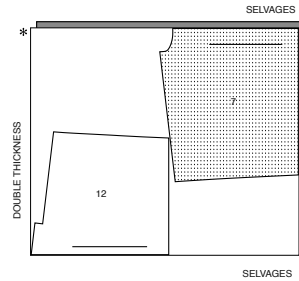
USE PIECES 7 12

45" (115CM) WITHOUT NAP SIZES XS S M



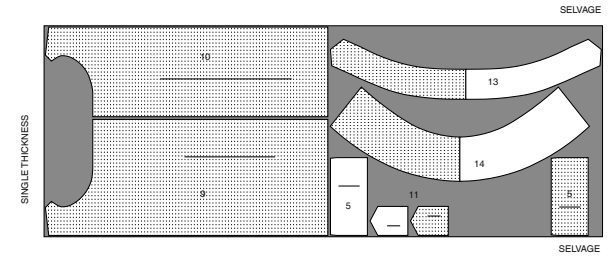
CUTTING LAYOUTS CONTINUED ON PAGE 2

45" (115CM)
WITHOUT NAP
SIZES L XL XXL

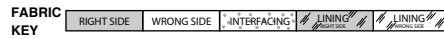


INTERFACING

USE PIECES 5 9 10 11 13 14
20" (51CM)
ALL SIZES



Sewing Directions



Read **General Directions** on page 1 before you begin.

GLOSSARY OF SEWING METHODS

Sewing methods shown in **BOLD** are defined below:

NARROW HEM – Press under hem allowance as indicated on tissue pattern. To form narrow hem, tuck under raw edge to meet crease. Press. Stitch hem in place.

SLIPSTITCH – Slide needle through a folded edge, then pick up a thread of underneath fabric.

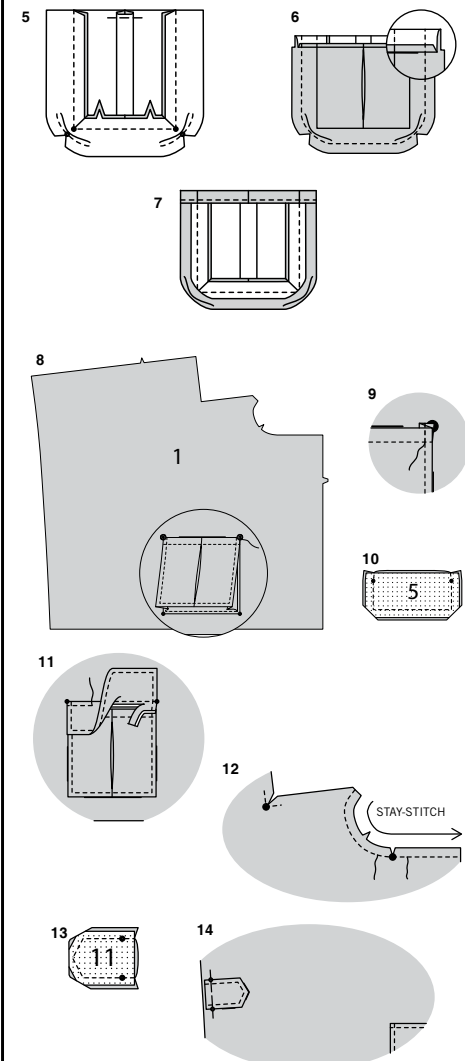
STAY-STITCH – Stitch 1/2" (1.3cm) from cut edge in direction of arrows. This stitching stays in permanently to prevent stretching on curved edges. (Shown only in the first illustration.)

TOPSTITCH – On outside, stitch 1/4" (6mm) from edge, seam or previous stitching, using presser foot as guide, or stitch where indicated in instructions.

PATTERN PIECES WILL BE IDENTIFIED BY NUMBERS THE FIRST TIME THEY ARE USED.

STITCH 5/8" (1.5CM) SEAMS WITH RIGHT SIDES TOGETHER UNLESS OTHERWISE STATED.

- With right sides together and raw edges even, pin gusset to pocket, matching dots and notches. Press seam toward pocket, pressing out fullness at corners.
- Press under 1/4" (6mm) on upper edge of pocket and gusset. Turn upper edge to outside along fold line, forming facing. Stitch along seam line on raw edges. Trim seam allowance in the facing area to 1/4" (6mm).
- Turn corners right side out, turning facing to the wrong side; press, pressing under raw edges of gusset along stitching. Stitch facing close to inner edge.
- On outside, **TOPSTITCH** side and lower edges of pocket. Pin gusset to **RIGHT FRONT** (1) and **LEFT FRONT** (2) sections along pocket line, matching large and small dots. Stitch close to side and lower edges. (Right front will be shown in pocket illustrations.)
- Fold gusset in half, lengthwise, bringing large dots together; press. Stitch corners of pocket and gusset to front along previous topstitching from upper edge to stitching line of facing, stitching through all thicknesses.
- With right sides together, stitch facing to **FLAP** (5), leaving edge with small dots open. Trim seam and corners.
- Turn flap; press. Machine-baste 5/8" (1.5cm) from raw edge. On outside, **TOPSTITCH** finished edge. On outside, pin flap to front, placing basting along flap line, matching small dots, as shown. Stitch along basting. Trim close to stitching. Turn flap down; press. **TOPSTITCH** close to upper edge.



RIGHT FRONT

- STAY-STITCH** neck edge of right front. To reinforce inner corner and neck edge at large dots, stitch along seam line for about 1" (2.5cm) each side of large dots, stitching through dots, as shown. Clip to stitching at dots.
- With right sides together, stitch facing to **TAB** (11) in a 3/8" (1cm), leaving end with small dots open. Trim seam and corners.
- Turn tab right side out; press. **TOPSTITCH** finished edges of tab. On outside, pin one tab to right front, matching small dots, having raw edges even. Baste. (Second tab will be applied to left front in a separate step.)

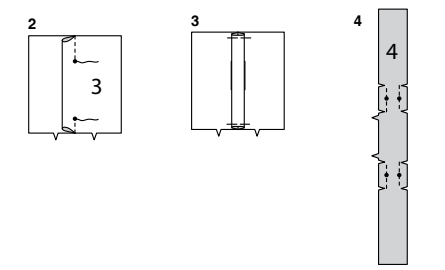
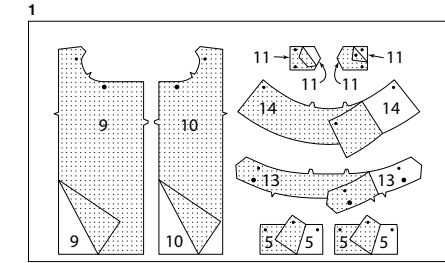
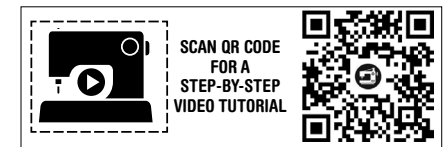
TRENCH CAPE

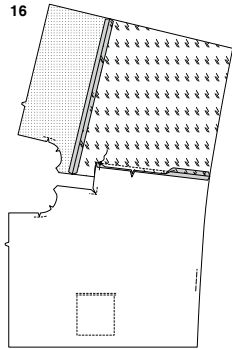
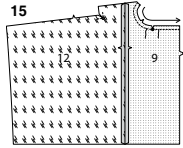
INTERFACING

- Pin interfacing to wrong side of **FLAP** (5) and **RIGHT FRONT FACING** (9), **FRONT FACING** (4), **LEFT FRONT FACING** (10), **TAB** (11) **COLLAR BAND** (13), and **COLLAR** (14). Fuse interfacing in place following manufacturer's directions.

POCKETS

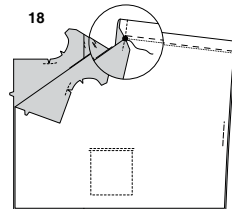
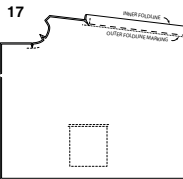
- To make pleat on **POCKET** (3) sections, on inside, bring broken lines together. Stitch along broken lines from outer edges to small dots, back-stitching at dots to reinforce the seam.
- Press pleat flat bringing stitching to center. Baste across raw edges.
- To reinforce long edges of **GUSSET** (4) sections at small dots, stitch along seam line for about 1" (2.5cm) each side of small dots, stitching through dots, as shown. Clip to stitching at dots.





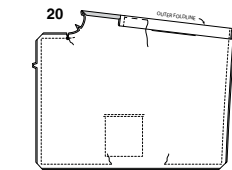
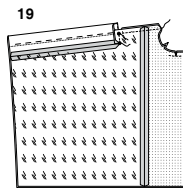
15. STAY-STITCH neck edge of RIGHT FRONT FACING (9). With right sides together and raw edges even, pin right front facing to FRONT LINING (12), matching notches. Stitch. To reinforce inner corner and neck edge at large dots, stitch along seam line for about 1" (2.5cm) each side of large dots, stitching through dots, as shown. Clip to stitching at dots.

16. Stitch lining to right front at overarm edge, matching notches. Stitch from outer edge to large dot, back-stitching at dot to reinforce the seam.



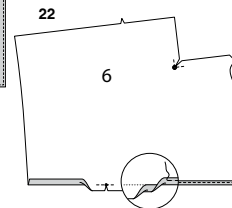
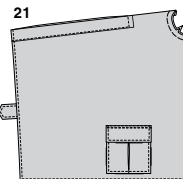
17. Fold right front along inner fold line with right sides together. Hand-baste close to outer fold line.

18. Folding shoulder edge of right front and lining away, stitch inner end from fold to large dot, back-stitching at dot to reinforce the seam. Do not trim this seam.



19. Stitch right front to facing and lining at shoulder edge from neck edge to large dot, back-stitching at dot to reinforce the seam. Stitch across overarm between large dots.

20. With wrong sides together, fold front along outer fold line to front. Stitch side edge and lower edge, leaving an opening along lower edge for turning. Stitch front edge and neck edge to large dot at center, back-stitching at dot to reinforce the seam. Trim seams and corners.



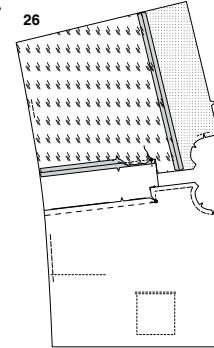
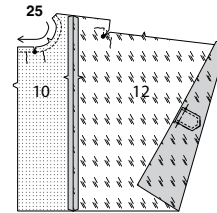
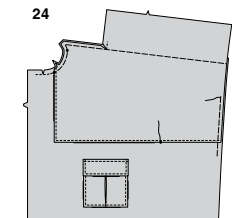
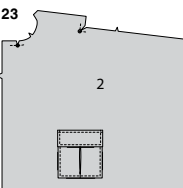
21. Turn right front; press, pressing out the tab. **SLIPSTITCH** opening closed. Baste neck edge. **TOPSTITCH** outer edge of right front from shoulder fold to large dot, squaring stitching at large dot. Stitch front along stitching line, (catching in pressed edge of inner overarm edges), pivoting with needle in fabric to fold, as shown. (Remaining stitching lines will be stitched after back is complete.)

LEFT FRONT

22. To reinforce inner corner of FRONT OVERLAY (6) at large dot and lower edge at small dot, stitch along seam line for about 1" (2.5cm) each side of dots, stitching through dots, as shown. Clip to stitching at dot. **NARROW HEM** front and lower edge to small dot. Press under remaining lower edge.

23. To reinforce inner corner and neck edge of LEFT FRONT (2) section at large dots, stitch along seam line for about 1" (2.5cm) each side of large dots, stitching through dots, as shown. Clip to stitching at both dots.

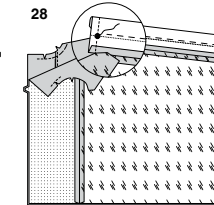
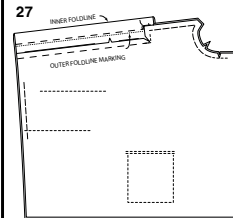
24. Pin wrong side of overlay to right side of left front, matching small dots and notches. Baste neck and shoulder edges. Baste side edge to within 3" (7.5cm) of stitching line. Baste front overlay stitching line to overarm seam of front. Stitch unhemmed, pressed, edge of overlay to front continuing previous hem stitching.



25. STAY-STITCH neck edge of LEFT FRONT FACING (10). With right sides together and raw edges even, pin left front facing to FRONT LINING (12), matching notches. Stitch. To reinforce inner corner and neck edge at large dots, stitch along seam line for about 1" (2.5cm) each side of large dots, stitching through dots, as shown. Clip to stitching at dots.

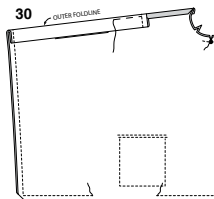
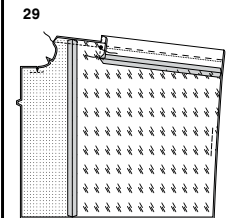
On outside, pin remaining tab to lining between the small dots. Baste.

26. Stitch lining to left front overlay at overarm edge, matching notches. Stitch from outer edge to large dot, back-stitching at dot to reinforce the seam.



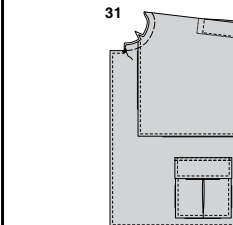
27. Fold left front overlay along inner fold line with right sides together. Hand-baste close to outer fold line.

28. Folding shoulder edge of left front and lining away, stitch inner end from fold to large dot, back-stitching at dot to reinforce the seam. Do not trim this seam.



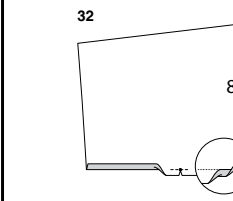
29. Stitch left front to facing and lining at shoulder edge from neck edge to large dot, back-stitching at dot to reinforce the seam. Stitch across overarm between large dots.

30. With wrong sides together, fold front along outer fold line to front. Stitch side edge and lower edge, leaving an opening along lower edge for turning. Stitch front edge and neck edge to large dot at center, back-stitching at dot to reinforce the seam.



31. Turn left front; press, pressing out the tab. **SLIPSTITCH** opening closed. Baste neck edge.

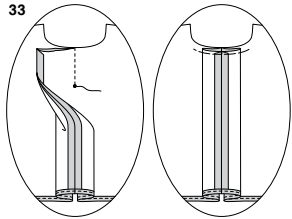
TOPSTITCH outer edge of left front from shoulder fold to large dot, squaring stitching at large dot. Stitch front along stitching line, pivoting with needle in fabric to fold, as shown. (Remaining stitching lines will be stitched after back is complete.)



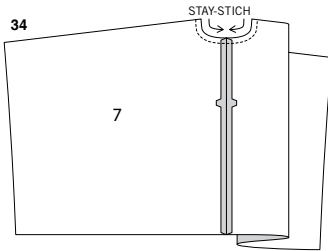
BACK

32. Stitch center back edges of BACK OVERLAY (8) sections with right sides together.

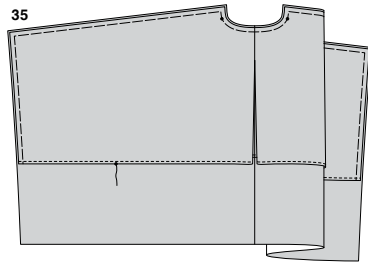
To reinforce lower edge at small dot, stitch along seam line for about 1" (2.5cm) each side of dot, stitching through dot, as shown. Clip to stitching at dot. **NARROW HEM** lower edge between the small dots. Press under remaining lower edge.



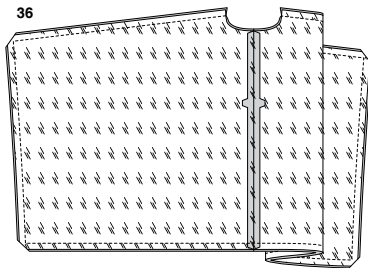
33. To make pleat, on inside, bring broken lines together. Stitch along broken lines, from neck edge to small dot, back-stitching at dot to reinforce the seam. Press pleat flat bringing stitching to center. Baste across raw edge.



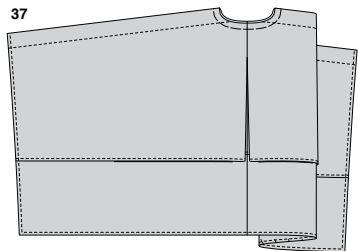
34. **STAY-STITCH** neck edge of BACK (7). Stitch center back edges of back sections with right sides together.



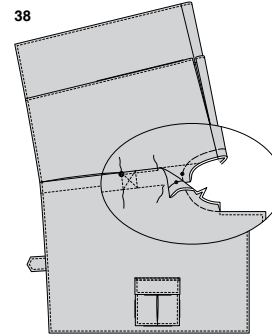
35. On outside pin back overlay to back, matching small dots and having raw edges even. Baste neck, shoulder, and side edges. Stitch unhemmed, pressed, edge of overlay to back continuing to previous hem stitching.



36. Stitch center back edges of back lining sections. With right sides together and raw edges even. Pin lining to back, matching centers. Stitch shoulder, side, and lower edges. Trim seam and corners.

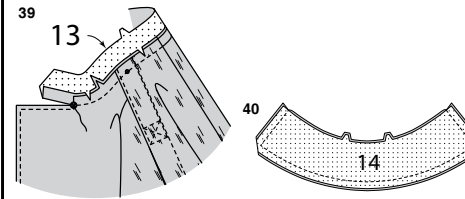


37. Turn back through neck opening; press. Baste neck edge. Stitch along stitching lines on shoulder edges. **TOPSTITCH** side and lower edges.



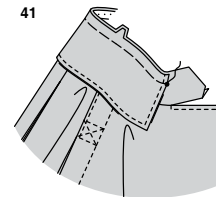
38. On outside, lap front sections over back, matching small dots. Edge stitch front sections from neck edge to large dot then, stitch along remaining stitching line through all thicknesses.

COLLAR BAND AND COLLAR

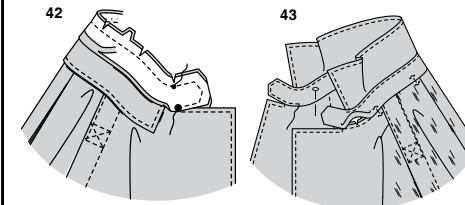


39. Clip cape neck edge to stitching. With right sides together, pin single notched edge of COLLAR BAND (13) to neck edge, matching centers back, large and small dots. (Collar band extends beyond front opening edges.) Stitch neck edge. Trim seam; clip curves. Press band out; press seam toward band.

40. With right sides together and raw edges even, stitch facing to COLLAR (14), leaving notched edges open. Trim seam and corners. Turn collar; press. **TOPSTITCH** finished edges.



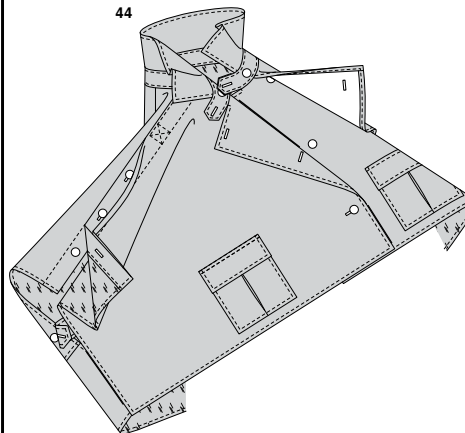
41. Machine-baste raw edges together. With right sides together and raw edges even, pin collar (facing side) to collar band, matching centers back and double notches and placing ends at small dots. Machine-baste.



42. Press under 5/8" (1.5cm) on single notched edge of collar band facing; trim to 1/4" (6mm). With right sides together, pin collar band facing to collar band between small dots (over collar), matching centers. Stitch double notched edge. Open out seam allowance and stitch front extension to large dot, back-stitching at dot to reinforce the seam. Trim seam and corners.

43. Turn collar band facing to inside; press. Pin pressed edge of facing over seam, placing pins on outside. On outside, stitch close to all edges of collar band, catching in pressed edge of facing on inside.

FINISHING



44. Make buttonholes at markings on right and left inner shoulder edges, tabs, left front overlay, right front edge, and collar band extensions. Sew buttons at small dots, on outside of back shoulder edges, and back overlay for tabs. On outside, sew buttons to left front and collar band at small dots. On inside, sew button to small dot on right collar band facing.



Congrats!

You've completed your sewing adventure

**SHARE
YOUR** LOOK



Post your pattern and tag us
@simplicity_creative_group and **#simplicitypatterns**
for a chance to be featured on our social media.

Look for more PDF patterns at [simplicity.com](https://www.simplicity.com)

Have a question or need help with your sewing project call us at
1-888-588-2700

Simplicity
by design™

Simplicity ©2023 a division of IG Design Group Americas Inc. • Atlanta, GA 30342 USA www.thedesigngroup.com • All Rights Reserved. www.simplicity.com • Made in the U.S.A. Fabriqué aux États-Unis.

To be used for individual private home use only and not for commercial or manufacturing purposes. • A usage privé seulement et non à des fins commerciales ou de production en série. • Para uso privado solamente, no se puede utilizar con propósitos de comercialización o de producción en serie.